

>> The new smart
forfour



The smart among the fourseaters.



Four seats, five doors – thousands of possibilities:
the smart forfour combines innovative ideas typical
of smart and intelligent solutions with the versatility
of a compact four-seater car.

FOR ideas, answers, fun & functions

smart has revolutionised urban mobility. With clever solutions and unique ideas that make getting around in the city a pleasure once more. A pleasure that isn't marred by a shortage of parking spaces and dense traffic. And that is particularly satisfying when others have long since had to admit defeat.

This smart feeling is now available for four people – and that's not the only surprise. The smart forfour is a surprising car in many respects with a whole host of intelligent answers and innovations that make it unmistakably a true smart.

>> Contents.

04 smart forfour
The smart among the fourseaters.

08 Design
Typically smart: a real eye-catcher.

16 Driving fun
Manoeuvrable, agile and nimble.

20 Functionality
New ideas for the compact class.

30 Infotainment
Innovative multimedia solutions
from smart.

34 Safety
The innovative smart safety concept.

40 Equipment lines
passion, prime, proxy & the edition #1.

52 Entertainment systems
Entertainment and connection
possibilities.

54 Equipment packages & options
Everything you need. And everything
that's nice to have.

64 Colours
Unique two-colour concept.

68 About your smart
Service and smart move assist.

**72 Equipment, options &
technical data**

A smart forfour car, featuring a black roof and orange body, is parked on a city street. The car is positioned in the lower right quadrant of the frame. In the background, a modern, multi-story building with large windows and a light-colored facade stands prominently. A few pedestrians are visible on the sidewalk, and a street lamp is positioned near the building. The scene is brightly lit, suggesting a sunny day. The overall composition is clean and modern, emphasizing the car's design and its urban setting.

**FOR
one,
two,
three,
four**

>> Welcome to the smart among the fourseaters –
the new smart forfour.





>>The city is full of possibilities. And it's great when four of you can enjoy all that the city has to offer. The smart forfour combines an innovative car concept with all the advantages of a four-seater vehicle. It is this that makes it the most unusual representative of its class. Thanks to its compactness and agility it is the perfect four-seater car for the city. And with plenty of cargo volume and space for four adults the smart forfour is ready for everything that life holds in store.



FOR
look
at that,



that,

A white Smart car is parked on the left side of the frame. In the background, a man in a plaid shirt and brown pants is skateboarding on a sidewalk. The background is a green brick building with several windows. The scene is brightly lit, suggesting a sunny day.

that

& that

>>A smart at first glance. But for four people. The smart forfour carries the revolutionary aspects of the smart brand in its genes – and proudly displays them. It boasts a wholly unique design that makes it stand out in city traffic.

>> For looking great, outside, inside and around.

The face of the smart forfour welcomes you with a smile: the radiator featuring a honeycomb structure with the integrated smart logo defines the striking look of the front. And halogen headlamps with a clear-lens design give the smart forfour a self-assured look by day and night. On request, elegantly curved, integrated daytime driving lights with LED fibre optics and a welcome function will accompany you throughout the day.





The rear is dominated by the large bi-colour lights – with LED segments if you opt for the optional Premium Plus package. Integrated in the tridion safety cell, the tail lights give the design a premium look and lend the rear end its own distinctive character, too.



The dynamic coupé line and the bi-colour combination of tridion safety cell and body colour are real eye-catchers in city traffic. And thanks to the long wheelbase and the extremely short overhangs the smart forfour has a particularly compact road stance. A true smart that is sure to cause a stir on the streets of the city.



FOR

**i see it,
i touch it,
i use it,
i love it**

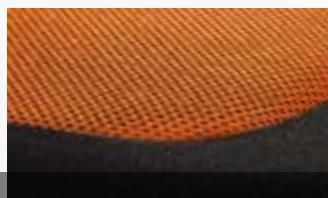




>>Like the eye-catching exterior, the interior of the smart forfour also breaks with conventions. A consistent design and large fabric-covered surfaces with a high-quality feel lend it a distinctive character: modern, chic and harmonious.



The seats with integrated headrests are not only attractive; they also provide for a higher seating position. They offer good support and excellent seating comfort, regardless of whether you are just driving to work or heading off on a mini-break. The seat material is designed to reflect those used on high-quality sports shoes – lending the interior a sporty and stylish feel.



**>> For colours,
shapes, ideas,
solutions.**

The striking bi-colour concept in different combinations and the play of contrasts on the instrument panel, door centre panels and seat covers give the interior a harmonious look throughout. And ensure that you feel as comfortable as if you were at home.



At the rear, the standard readyspace seats enable you to create even more storage space in no time at all.



The 3-spoke steering wheel with control buttons provides for a pleasant grip and enables operation of the trip computer, cruise control and radio volume. A well-conceived centre console adjoins it on the right. This is where the controls for the standard automatic climate control are found together with a practical drawer for all your little everyday necessities.



The interior door trim demonstrates attention to detail: with a multi-colour look and a sophisticated combination of fabric and door trim material it incorporates a large storage compartment and has space for the front speakers that are covered with a stylish honeycomb design.



FOR
run,
run,
run,
run



>>Urban driving fun. This is what smart has stood for from the very beginning. And it is why the smart forfour, too, has been consistently designed for the demands of city driving – right down to the last detail. Thanks to the rear engine and rear-wheel drive the smart forfour is not only extremely compact – with the newly developed manual transmission it also offers a whole lot of driving fun! There is a 71 hp (52 kW) engine, which is powerful yet fuel-efficient, and you'll find that refuelling stops become a rare pleasure. For those seeking a higher level of performance, the new 90 hp (66 kW) turbo engine definitely fits the bill.





»» **For smarter,
faster, further,
clever.**

Agile city driving. To the farmer's market in the morning, the DIY store at midday, and with friends to the fairground in the evening. The new smart forfour won't just bring you quickly to your destination, you'll also enjoy every minute behind the wheel on the way there. Its size in combination with the Direct-Steer system gives it the smallest turning circle in its class (8.65 m measured from kerb to kerb). So if you've taken a wrong turn simply do a U-turn! And with a length of just 3.49 m finding a parking space is a breeze.






smart

D BB XK 2

FOR in & out & in & out



>> With a whole host of intelligent solutions the smart forfour is the perfect car for whatever you have planned – alone, or for two, three or four people. Or for whatever you don't have planned. Simply go with the flow of the city and take in everything you encounter on the way. And thanks to the wide-opening rear doors that can be opened up to 85°, getting in and out and loading and unloading are particularly convenient.







>> For little moves and big shops.

When the seats for the front passenger and rear passengers are folded down and you are driving alone, you can make use of the full storage space in the smart forfour. Thanks to the folding passenger seat backrest you can transport objects up to 2.22 m in length. For example, a standard lamp fits easily into the smart forfour.





>> For spontaneous days and nights.

The smart forfour also offers ample **storage space** when you have a rear passenger. This is because the backrests can be folded down separately so that there is enough space for everything you need to spend an exciting day with friends. Or an exciting night.





>> **For pink and light blue.**

With ISOFIX as a standard feature, **child seats** can be easily and safely secured on the individual readyspace rear seats of the smart forfour. And thanks to the 85° opening rear doors it is particularly easy to seat small children in the smart forfour. Even if they're sleeping soundly.





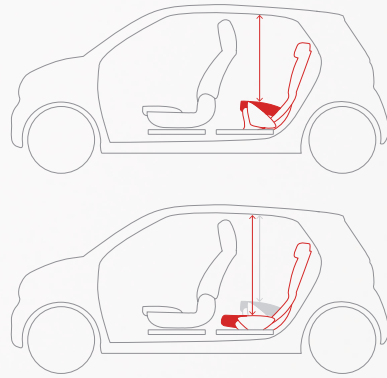
>> For everything and everyone.

There's ample space for two adults on the rear seats. So simply pack in your friends and look forward to your city adventure together. Theatre, cinema, concert or sport – it's all more fun when there are four of you, isn't it?



>> For Lisa, Tom, Charlotte and Billy.

The versatility of the smart forfour opens up lots of possibilities – from an outing to moving house, and it makes many things amazingly easy. Intelligent solutions such as very wide-opening rear doors, foldaway seat cushions or the cargo position of the rear backrest easily create extra space in next to no time. With the smart forfour flexibility doesn't stop with the individually folding rear seats. On the contrary: in this discipline, too, the smart forfour is the smart among the fourseaters. And it surprises with unconventional ideas that enable you to master both the small and the big challenges of city life with ease.



The readyspace seats are a particularly clever solution in terms of space economy. It is a simple matter to swivel the seat cushions individually to the footwell – a quick and easy way to create more height for larger items. In conjunction with the cargo box, the removable storage compartment, this solution offers you maximum storage space flexibility. And if you need a level cargo area simply fold down the seat backrests.

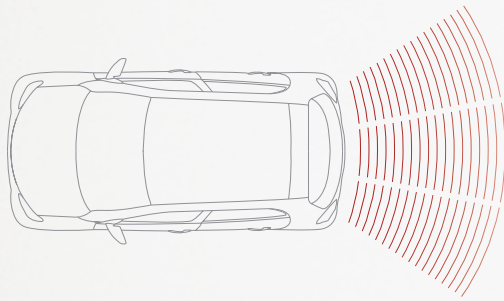
The 85° opening rear doors of the smart forfour can be opened almost at a right angle, making it much easier to load large or bulky items than with many other cars.





»» For gaps, lots, spaces and places.

Parking in cities isn't always a piece of cake. But with the new smart forfour, you can make the most of even the smallest parking space. Thanks to its rear-mounted engine this exceedingly compact four-seater car is just 3.49 m long, enabling it to fit in parking spaces that other drivers have to reject on sight.



The parking aid (available as an option) gives you an acoustic signal when you get too close to the vehicle behind you when parking. Of course, you can continue to rely on your intuition – but it's best to be safe, isn't it?





The rear view camera (only available in conjunction with the Premium Plus package) provides you with optimum support when reversing or parking and is elegantly integrated in the brand logo on the tailgate. As soon as you engage reverse gear the image of the rear view camera is shown on the large multi-touch display of the Media-System. Dynamic guidelines assist you with your driving manoeuvres.

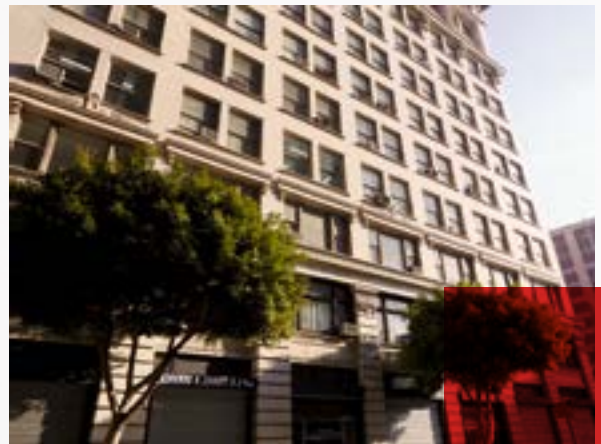


The speed-sensitive Direct-Steer system (standard) enhances both comfort and safety on the road and reduces the steering effort needed during manoeuvring. At higher speeds (e.g. on country roads) the Direct-Steer system ensures more precise straight-line stability.



>> For innovation, information, application and smartphone.

smart cross connect is an innovative infotainment solution that offers you far more than the usual radio and navigation functions. Together with the smart Audio-System, the universal smartphone cradle¹ and the smart cross connect app this solution is your multimedia control centre.



The smart Audio-System offers extensive functions for unlimited enjoyment of music. Play your favourite music via USB stick or MP3 player. Alternatively, it's simple to stream your audio files via Bluetooth® from your smartphone. This interface also turns the smart Audio-System into a convenient hands-free system.



With the universal smartphone cradle¹ you can connect your mobile phone² with your smart forfour. Directly integrated in the Audio-System, it turns your smartphone into a central control unit for music, infotainment and navigation – conveniently positioned and simple to operate.



The free smart cross connect app is the interface between your smartphone and your smart forfour. It enables you to access your vehicle data on the road and opens up a whole range of possibilities – for example, analysing your driving dynamics. In addition, the intuitively operated app with navigation function will find parking spaces for you. What's more, you can listen to your own personalised radio programme and discover new artists to suit your music taste whilst driving.

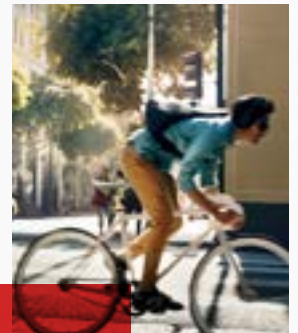
And the app also offers useful functions outside the vehicle: for example, it shows you the distance you have travelled and fuel consumption. And not only does the app remember where you have parked, it also knows how long you have parked there for.

¹Approved for smartphones with smart cross connect app.

²For iOS and selected Android smartphones, for compatibility see smart.com/connect.

>> For innovation, integration, information and intonation.

The smart Media-System (in conjunction with the Premium package) opens up a whole range of possibilities – and it's simple and intuitive to operate. Perfectly integrated in the interior design, the optional Media-System boasts a 7-inch capacitive multi-touch display and high functionality: in addition to a hands-free function and music streaming via Bluetooth®, the Media-System has interfaces for AUX, USB and SD card – enabling you to view pictures and films as well as listening to your own music. Thanks to LIVE services¹ with HD Traffic, your journey planning is always up to the minute – with real-time information on any traffic jams and the weather and TomTom Places location search functions. So not only will you always find a parking space with your smart forfour, you will also know where the nearest restaurant or cinema is or whatever else you feel like doing. What's more, important functions of the smart Media-System can be controlled with voice command.





Media-System – multifunctional experience and simple to operate. Avoid traffic jams and reach your destination more quickly thanks to real-time traffic information. The integrated navigation system with 3D display of points of interest is up to date, quick and reliable. The system uses web-based services for this that are transferred by a permanently-installed SIM card. The LIVE services¹ can initially be used free of charge for three years. They include weather information for any place and effective POI search with an extensive database. Pictures and videos can be transferred from a USB stick or an SD card. What's more, the music of your choice can be played via Bluetooth® from a smartphone or via AUX interface. A practical advantage is the intuitive operation via the high-resolution 7-inch multi-touch display with gesture control or alternatively via voice input. This Media-System is therefore literally able read your wishes from your lips. The hands-free system via Bluetooth® ensures that your hands remain on the steering wheel.

¹3 years inclusive, individually extendable thereafter.



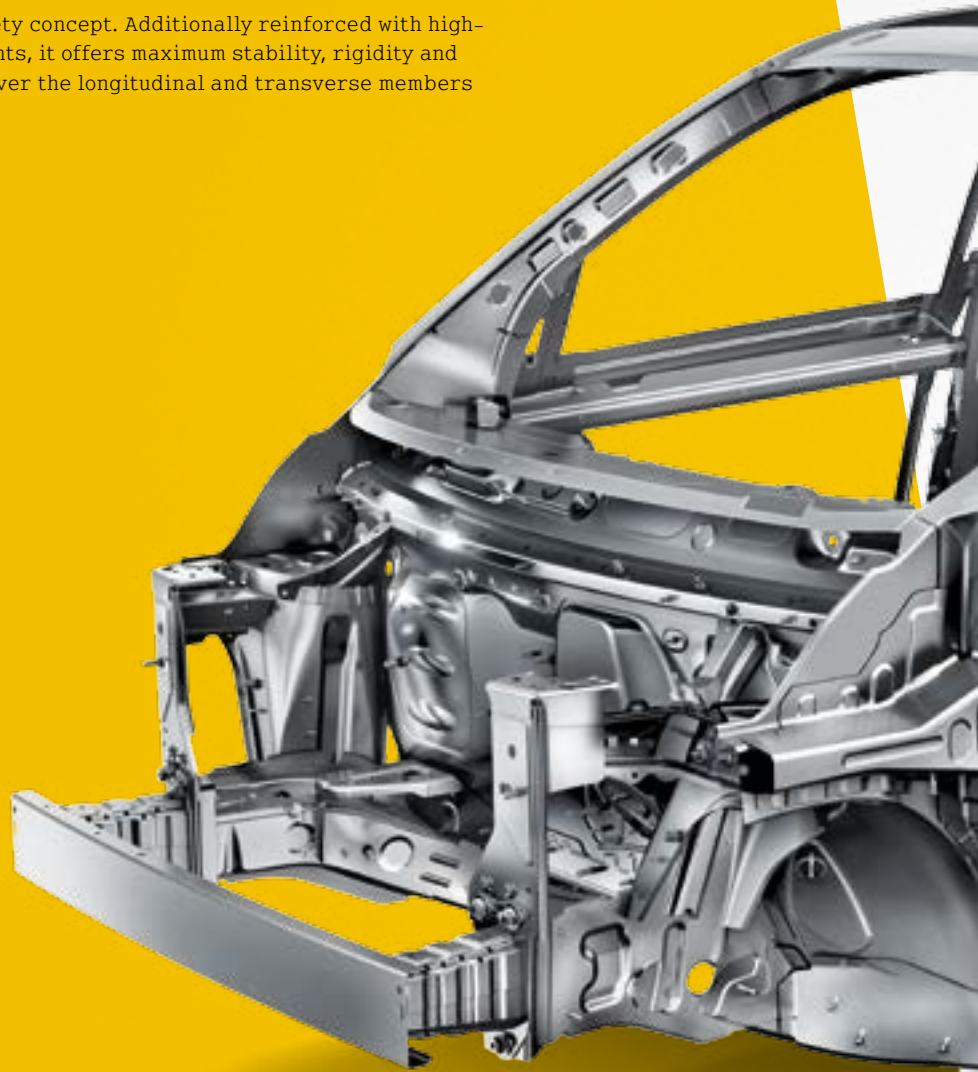
FOR being safe, secure, steady & sure

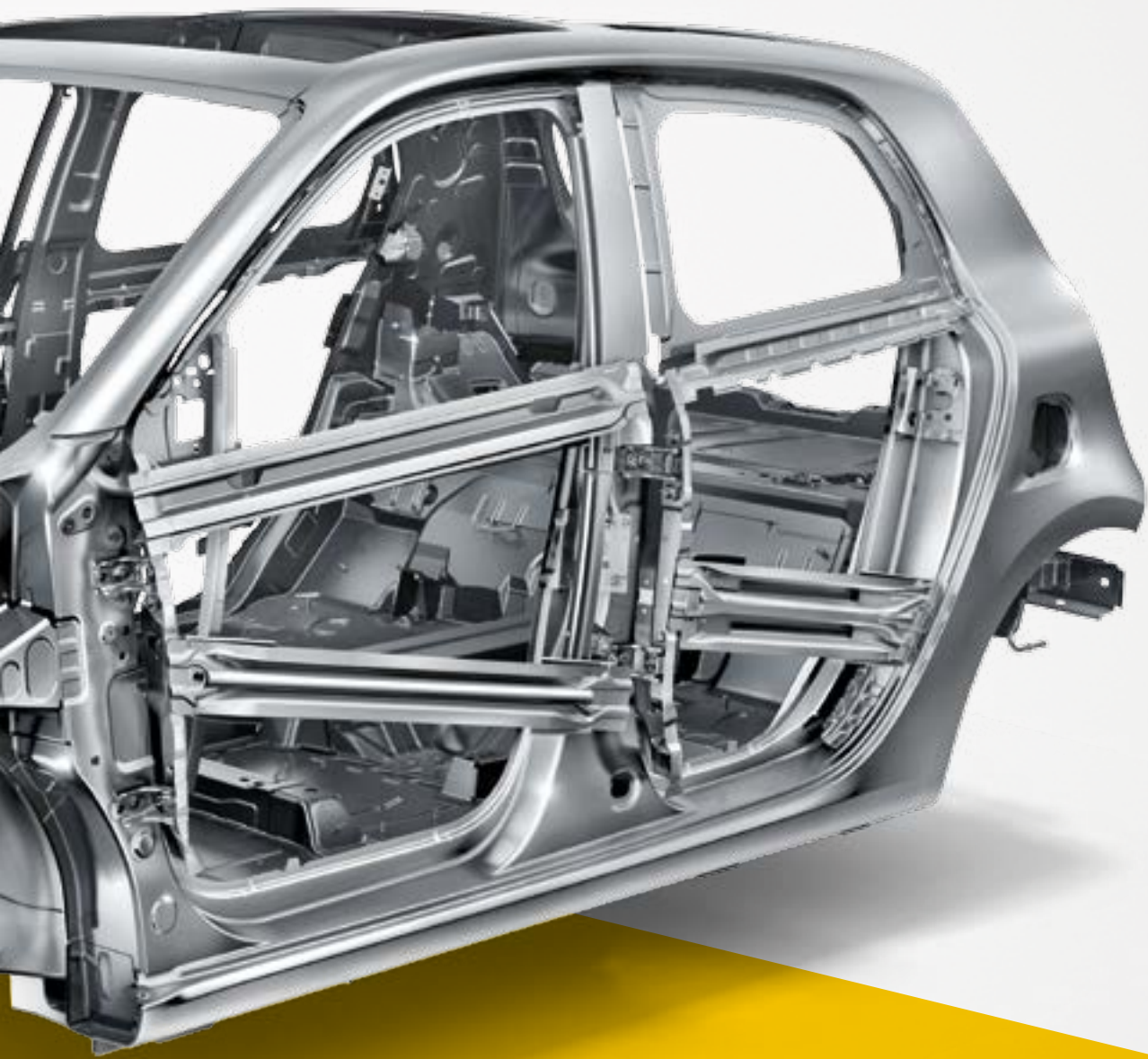
>> **Maximum safety in a compact space.** The tridion safety cell and state-of-the-art systems for active and passive vehicle safety ensure maximum occupant protection. So not only will you have lots of fun behind the wheel, you can relax safe in the knowledge that you are in good hands.



>> For safety, stability, compactness and reliability.

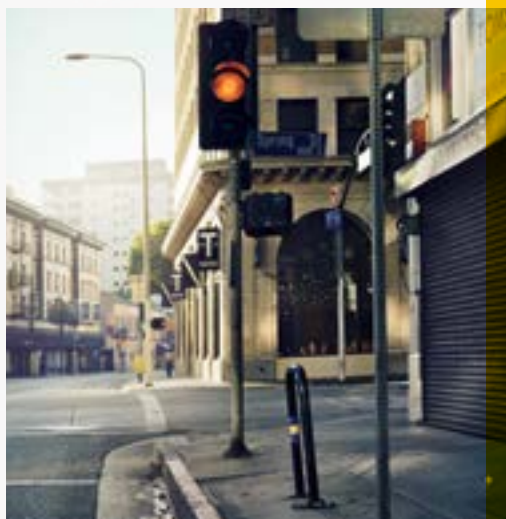
The tridion safety cell is the heart of the smart safety concept. Additionally reinforced with high-strength steel sheets at strategically important points, it offers maximum stability, rigidity and strength. The impact energy is distributed evenly over the longitudinal and transverse members and thus reduced effectively.





>> For sense, see, react, relax.

The smart forfour is equipped with a whole host of state-of-the-art safety systems. These include five airbags, belt tensioners on the rear seats, abs, esp® and Crosswind assist as a standard feature. In addition, Lane Keeping Assist and Forward collision warning are available as options.





Crosswind assist

Sudden gusts of wind can lead to tricky situations, especially if you are driving fast. Crosswind assist, a standard feature, detects deviations from straight-line stability and specifically brakes individual wheels so that you do not have to countersteer as strongly.



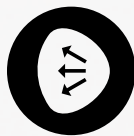
Forward collision warning

Forward collision warning (available as an option) is an attentive assistance system that can help to prevent rear-end collisions. If the distance to a moving or stationary object becomes too close you receive a visual warning in the instrument cluster so that you can react quickly. If there is a risk of collision there is also an acoustic warning signal.



Lane Keeping Assist

The optional Lane Keeping Assist is activated at a speed of 43 mph. It monitors the road ahead of you with a camera and warns you with an acoustic and a visual signal in the instrument cluster if you leave your lane.



Airbags

Five airbags protect the occupants of the smart forfour should the worst come to the worst: driver and passenger airbags, head/thorax bags for driver and passenger and a kneebag for the driver.







for everyone

>> The city is full of characters. And there's a smart forfour to suit each and every one of them. You can opt for one of three individual equipment lines for the smart forfour that are just like life in the city itself: multi-faceted, modern and innovative. Choose your favourite and add optional equipment packages and further options as you wish for more design, comfort and function.

>> For purists.

Every smart forfour is packed full of ideas that set the intelligent four-seater apart from other cars and impressive safety features such as Crosswind assist and cruise control with limiter. In addition, there are comfortable and convenient solutions that make everyday driving even more carefree. So if you're looking for an uncomplicated way of getting around, why not take a seat behind the wheel and find out how practical and how much fun a compact four-seater can be?





Exterior

- > 85° opening rear doors
- > Exterior mirrors – manually adjustable
- > Exterior mirror cap in tridion colour
- > Headlamps – H4 halogen
- > LED daytime running lights
- > Lockable service bonnet
- > Painted door handles
- > Painted front grille
- > Rear spoiler
- > Rear windscreen – heated, with timer control
- > Rear windscreen wiper with intermittent wiper control and automatic wipe/wash function
- > Side indicators in white
- > Tail lights
- > Third rear brake light
- > tridion safety cell – black

Interior

- > Centre console with pull-out tray and double cup holder
- > Dashboard and door centre panel in fabric and highlights in contrast colour
- > Gear shift lever – trimmed in leather
- > Headrests at the rear (x2)
- > Interior door opener in matt chrome
- > Interior lighting incl. reading light for driver and passenger
- > Load-lashing eyes in luggage compartment
- > Lockable glove compartment
- > Luggage compartment cover
- > Luggage compartment lighting
- > Passenger seat with through-loading function (flat-folding seatback)



A photograph of two Smart cars on a city street. On the left is a bright orange Smart car, and on the right is a white Smart car with black accents. They are parked on a street corner with tall brick buildings in the background. A traffic light and a 'ONE WAY' sign are visible on the left. A street sign for '6th St' and a 'No Left Turn' sign are on the right. The scene is brightly lit, suggesting a sunny day.

>> passion.

Confident, extravagant, modern. On the exterior the silver 15-inch alloy wheels in an 8-spoke design immediately catch the eye. And a look through the windows to the interior that is available in two colour variants shows that the smart forfour has a whole lot of confidence. Inside you'll be pleased not only by the stylish design but also the standard automatic climate control and the smart Audio-system. Both are standard across all smart models.

>> prime.

Stylish, timeless, chic. 15-inch 5-twin-spoke alloy wheels in high-shine black are a defining feature of the classic look of the smart forfour prime. And heated black leather seats featuring white stitching lend the interior a particularly high-quality and high-class ambience. Upwards visibility is excellent due to the standard panoramic sunroof made from shatter-proof polycarbonate.



>> proxy.

Progressive, sporty, trendsetting. The exterior cuts a particularly dynamic figure thanks to the sports package and 16-inch 8-Y-spoke alloy wheels painted in black. The panoramic roof lends the interior an even more spacious feel. And it is not just the colour scheme in white and blue that exudes a certain coolness: the smart forfour proxy, like all smart model versions, comes with automatic climate control and the smart Audio-System as standard.

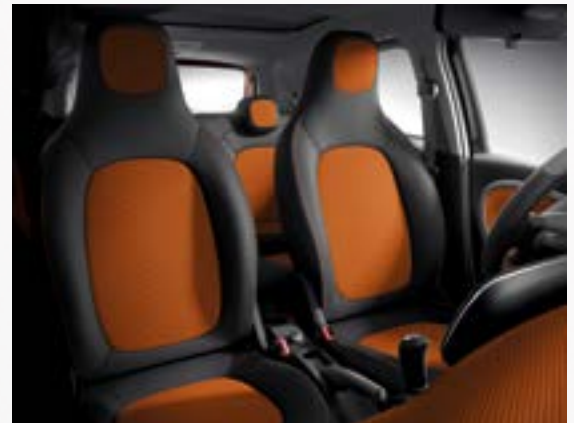
>> For individualists.

The interiors of the passion, prime and proxy play a decisive role in defining the character of each smart forfour. A pleasant feel, high functionality, innovative ideas and unusual colours give every equipment line its very own personality.

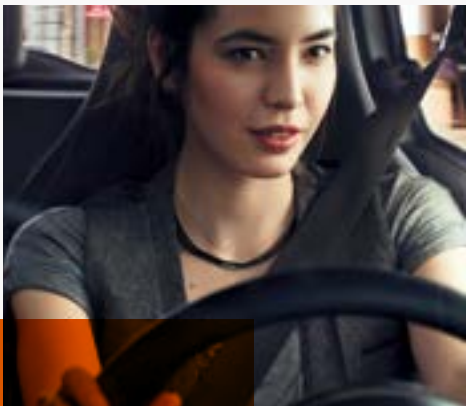


passion

- > Dashboard and door centre panels in orange fabric, accent trim parts in black/grey and seats with black/orange fabric upholstery
- > Dashboard and door centre panels in black fabric, accent trim parts in white and seats with black/white fabric upholstery¹
- > Folding rear seat backrests split 50/50 with cargo position
- > 3-spoke multi-function steering wheel in leather
- > Gear shift lever – trimmed in leather
- > Instrument cluster with colour 3.5-inch TFT display
- > Direct-Steer system with speed-sensitive power assistance and variable steering ratio
- > Electric windows with convenience opening and closing
- > Centre console with drawer and double cup holder
- > Reading light for driver and passenger
- > Luggage compartment lighting
- > 15-inch 8-spoke alloy wheels painted in silver
- > Door mirror caps in the tridion colour and radiator trim in black
- > Automatic climate control
- > smart Audio-System



The pictures on this double page show options in some cases.
¹Optionally available at no additional cost.





prime

- > Dashboard and door centre panels in black fabric and accent trim parts in white
- > Upholstery in black leather with white topstitching
- > Heated seats for driver and passenger
- > Folding rear seat backrests split 50/50 with cargo position
- > 3-spoke multi-function steering wheel in leather
- > Gear shift lever – trimmed in leather
- > Instrument cluster with colour 8.9 cm (3.5-inch) TFT display
- > Direct-Steer system with speed-sensitive power assistance and variable steering ratio
- > Electric windows with convenience opening and closing
- > Centre console with drawer and double cup holder
- > Reading light for driver and passenger
- > Luggage compartment lighting
- > Lane Keeping Assist
- > 15-inch 5-twin-spoke alloy wheels with a high-sheen black finish
- > Door mirror caps in the tridion colour and radiator trim in black
- > Panoramic roof with sun protection
- > Dashboard instruments with cockpit clock and rev counter
- > Grab handle for front passenger
- > Sunglasses holder
- > Automatic climate control
- > smart Audio-System



The pictures on this double page show options in some cases.



proxy

- > Dashboard and door centre panels in blue fabric and accent trim parts in white
- > Upholstery in leather look/fabric in white/blue
- > Folding rear seat backrests split 50/50 with cargo position
- > Gear shift lever – trimmed in leather
- > Instrument cluster with colour 8.9 cm (3.5-inch) TFT display
- > Direct-Steer system with speed-sensitive power assistance and variable steering ratio
- > Electric windows with convenience opening and closing
- > Reading light for driver and front passenger
- > Glove compartment, lockable
- > Lane Keeping Assist
- > tridion safety cell in white (alternatively in black or cool silver)
- > Door mirror caps in the tridion colour and radiator trim in white
- > Panoramic roof with sun protection
- > Dashboard instruments with cockpit clock and rev counter
- > Grab handle for front passenger
- > Sunglasses holder
- > Automatic climate control
- > smart Audio-System

Sports package

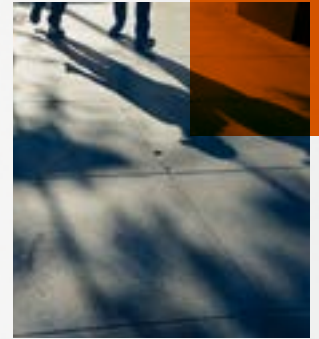
- > 16-inch 8-Y-spoke alloy wheels painted in black
- > Sports suspension lowering the vehicle by 10 mm
- > Exhaust system with chrome-plated tailpipe trim
- > 3-spoke multi-function sports steering wheel in perforated leather
- > Sports pedals in brushed stainless steel with rubber studs



>> For pioneers: The smart forfour edition #1.

A very special variant marks the launch of the new smart forfour: the smart forfour edition #1. Exclusive for the time being: the tridion safety cell in lava orange combined with the colour graphite grey shows the progressive direction of the new smart forfour. With 16-inch 8-Y-spoke alloy wheels painted in black to match. The Sports package lends the edition an all-round dynamic premiere appearance. The exciting look continues in the interior in striking black and orange – and the large panoramic roof creates a room with a view. Our most comprehensive Premium Plus package is an exclusive standard feature of the edition #1. This package features 7-inch touchscreen navigation, rear parking sensors with backup camera, front and tail lights with LED technology, as well as rain and light sensors, among other things.





Features

- > Exclusive tridion colour lava orange
- > Door mirror caps in the tridion colour
- > Radiator trim in black
- > edition #1 label on the front door frame
- > Panoramic roof with sun protection
- > Dashboard and door centre panels in black/orange with accent trim parts in black/grey
- > Fabric upholstery in black/orange
- > Gear shift lever – trimmed in leather
- > Instrument cluster with colour 8.9 cm (3.5-inch) TFT display
- > Direct-Steer system with speed-sensitive power assistance and variable steering ratio
- > Electric windows with convenience opening and closing
- > Reading light for driver and passenger
- > Centre console with drawer and double cup holder
- > Velour floor mats with edition #1 lettering
- > Automatic climate control
- > smart Media-System

Sports package

- > 16-inch 8-Y-spoke alloy wheels in black
- > Sports suspension lowering the vehicle by 10 mm
- > Exhaust system with chrome-plated tailpipe trim
- > 3-spoke multi-function sports steering wheel in perforated leather
- > Sports pedals in brushed stainless steel with rubber studs

Premium Plus package (includes Comfort/Premium package)

- > Ambient lighting: fibre optic cables in door trim, centre console and footwell provide indirect, soft light
- > Coming home function and front fog lamps
- > H4 halogen headlamps with LED light guide and LED tail lights, as well as integrated direction indicators
- > Rain sensor controls the windscreen wipers, adapting wipe intervals. The accompanying light sensor automatically activates driving lights
- > Rear view camera





>> For onboard entertainment.

smart Audio-System.¹

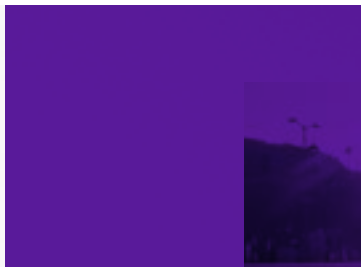
Music, please! Play your favourite music via USB stick or MP3 player or stream your audio files via Bluetooth®. With a pleasant temperature at all times.

> smart Audio-System with AUX/USB interface, Bluetooth® interface with hands-free system, audio streaming for music transfer and to connect with the smart cross connect app (available separately in the App Store for iOS and Android)²



¹Standard for all trim levels.

²Selected Android smartphones; for compatibility see smart.com/connect



smart Media-System.³

A 7-inch multi-touch display, voice control, navigation system and various connection possibilities for mobile devices such as smartphones, SD card or USB stick. Pretty cool as well: the automatic air conditioning.

> smart Media-System with 7-inch multi-touch display; FM twin tuner and AM tuner; AUX/USB interface; voice control; Bluetooth® interface with hands-free system; audio streaming for music transfer; 3D navigation system with maps for the whole of Europe including 3 years of LIVE services⁴; 4 speakers including 2 tweeters in mirror triangle



³Standard for Premium and Premium Plus packages only.
⁴3 years inclusive, individually extendable thereafter.

>> For high spirits.

Would you like to give even more expression to your lively character? No problem: 16-inch 8-Y-spoke alloy wheels painted in black in combination with the lowered sports suspension create an all-round dynamic impression that is continued in the interior with sports pedals and a multi-function sports steering wheel.



Sports package¹

- > 16-inch 8-Y-spoke alloy wheels painted in black, with front tyres: 185/50 R 16; rear tyres: 205/45 R 16
- > Sports suspension lowering the vehicle by 10 mm
- > Exhaust system with chrome-plated tailpipe trim
- > 3-spoke multi-function sports steering wheel in perforated leather with grey topstitching
- > Sports pedals in brushed stainless steel with rubber studs



¹Standard for proxy and edition #1.



Comfort package

Make yourself comfortable – in several respects. The height-adjustable driver's seat and the height-adjustable steering wheel included in the comfort package can be perfectly adjusted to your height.

- > Height-adjustable driver's seat
- > Height-adjustable steering wheel
- > Heated and electrically adjustable exterior mirrors



>> For premium lifestyle.



Premium package

- > Comfort package
- > Rear parking assistance
- > smart Media-System: 7-inch capacitive multi-touch display, AUX/USB interface (centre console), voice control, Bluetooth® interface with hands-free system, audio streaming for music transfer, navigation system with maps for the whole of Europe including 3 years of LIVE services¹ (individually extendable thereafter)



¹3 years inclusive, individually extendable thereafter.



Premium Plus package

- > Comfort/Premium package
- > Ambient lighting: when driving at night, ambient lighting emphasises the stylish interior. Fibre optic cables in the door trim, centre console and footwell provide indirect, soft light
- > Coming home function: after dark, exterior lights illuminate the way to and from the house
- > Front fog lamps
- > Headlamps with LED light guide and LED tail lights: H4 halogen headlamps for low and high beam with fibre optic daytime running lamps and tail lights in semi-LED technology as well as direction indicators integrated into the front bumper below headlamps
- > Rain/light sensor: rain sensor controls the windscreen wipers, adapting wipe intervals to amount of rainfall. The accompanying light sensor automatically activates driving lights
- > Rear view camera: makes reverse parking a snap





>> For more lightness.

Light-alloy wheels – the choice is yours: the design and colouring add visual highlights from sporty to elegant. From silver to black or bi-colour – the unusual look of the wheels is perfectly in keeping with the design of the smart forfour.



15-inch 5-twin-spoke alloy wheels (R87) painted in black and with a high-shine finish, with front tyres: 165/65 R 15; rear tyres: 185/60 R 15¹



15-inch 8-spoke alloy wheels (R88) painted in silver, with front tyres: 165/65 R 15; rear tyres: 185/60 R 15²



16-inch 8-Y-spoke alloy wheels (R95) painted in black, with front tyres: 185/50 R 16; rear tyres: 205/45 R 16³

¹Only in conjunction with prime equipment line.

²Only in conjunction with passion equipment line.

³Only in conjunction with proxy or edition #1 equipment lines.

>> For more sun.

The roof variants of the smart forfour are open to every ray of sun. Regardless of whether you enjoy the good weather through the large panoramic roof or opt for an open folding top – both offer a feeling of spaciousness and let in lots of light.



The large panoramic roof made of shatter-proof polycarbonate gives you great visibility upwards as well. The integrated sunblind protects you from too much sun. So even when you have a solid roof above your head you can still enjoy a view of the sky.



With the optional electric folding top you can always decide just how much summer you want. It opens and closes to any position in around 10 seconds – at a driving speed of up to 62 mph.





>> For more comfort and functionality.

Make your everyday life a little more enjoyable: for example, with ambient lighting for a pleasant atmosphere whilst driving. Or make it particularly comfortable with the readyspace seats at the rear which enable you to create more space for transporting larger items in next to no time.



Available as optional or standard equipment:

- > [1] readyspace seats at the rear with removable cargo box (standard)
- > [2] Glove compartment, lockable (standard)
- > [3] Reversing camera¹

¹Only in conjunction with Premium Plus package.

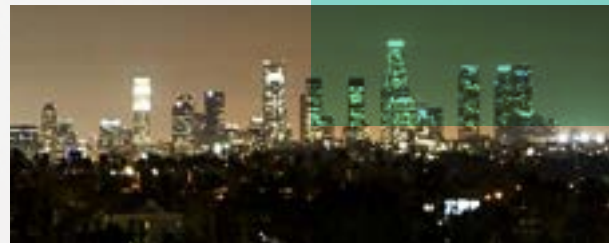


Available as optional or standard equipment:

- > [1] Universal smartphone cradle for smart Audio-System²
- > [2] Digital radio (DAB) for DAB, DAB+ and DMB standards
- > [3] Ambient lighting with indirect illumination of front doors, footwells, centre console and glove compartment
- > [4] Heated seats for driver and front passenger
- > [5] Automatic climate control with automatic temperature control and combined filter with activated charcoal (standard)
- > [6] Electric folding top (black fabric)
- > Luggage compartment cover (standard – not shown)
- > Electrically adjustable and heated door mirrors (not shown)



²Approved for smartphones with cross connect app.





Body in **cool silver**, tridion in **black** and radiator trim in **black**.



Body in **black**, tridion in **cool silver** and radiator trim in **cool silver**.



Body in **white**, tridion in **cool silver** and radiator trim in **white**.



Body in **lava orange**, tridion in **white** and radiator trim in **white**.



Body in **graphite grey**, tridion in **cool silver** and radiator trim in **cool silver**.



Body in **hazel brown**, tridion in **black** and radiator trim in **black**.



Body in **midnight blue**, tridion in **cool silver** and radiator trim in **cool silver**.



Body in **black-to-yellow**, tridion in **black** and radiator grille in **black**.



Body in **cadmium red**, tridion in **black** and radiator trim in **black**.

>> For your favourite colours.

The colour combinations available for the new smart forfour are as varied as city life itself. Choose from modern body colours in combination with a tridion safety cell in black, white or cool silver (metallic). If you choose the body or tridion in one of these three colours you should also choose the same colour for the radiator trim – and your smart forfour will look particularly good.



>> For a perfect style: colour combinations.

tridion	black (solid colour)	white (solid colour)	cool silver (metallic)
bodypanels			
black (solid colour)	•	•	•
white (solid colour)	•	•	•
black-to-yellow (metallic)	•	–	•
cadmium red (metallic)	•	•	•
cool silver (metallic)	•	•	•
graphite grey (metallic)	•	–	•
hazel brown (metallic)	•	•	•
lava orange (metallic)	•	•	•
midnight blue (metallic)	•	•	•



	passion		prime	proxy	edition #1
Interior	or				
	Dashboard and door centre panel – orange fabric and black highlights, upholstery in black/orange fabric	Dashboard and door centre panel – black fabric and white highlights, upholstery in black/white fabric	Dashboard and door centre panel – black fabric and white highlights, upholstery in black leather with white stitching	Dashboard and door centre panel – blue fabric and white highlights, upholstery in leather look with white/blue fabric	Dashboard and door centre panel – orange fabric and black highlights, upholstery in black/orange fabric
bodypanels					
black (solid colour)	●	●	●	●	–
white (solid colour)	●	●	●	●	–
black-to-yellow (metallic)	–	●	●	–	–
cadmium red (metallic)	–	●	●	–	–
cool silver (metallic)	●	●	●	●	–
graphite grey (metallic)	●	●	●	●	●
hazel brown (metallic)	–	●	●	–	–
lava orange (metallic)	●	●	●	–	–
midnight blue (metallic)	–	●	●	●	–

>> For carefree driving: Service and road assistance.

To ensure that you enjoy your smart for as long as possible after buying it, it needs professional, customised service – from your smart Retailer. Trust the experts who know the workings of your smart inside out. For your safety and for optimum retention of the value of your vehicle we only use high-quality genuine parts and diagnosis technology tailored to your smart. Pay us a visit and try out our excellent service for yourself.



smart Service Care

With smart Service Care from £15.00 per month, it's easy to enjoy more flexible and affordable car servicing at your local smart Retailer.

Because Service Care guarantees the price of parts and labour for up to four services and cleverly protects you against any further inflationary rises, the price will never go up. It also includes regular service items like spark plugs, air filters and fuel filters.

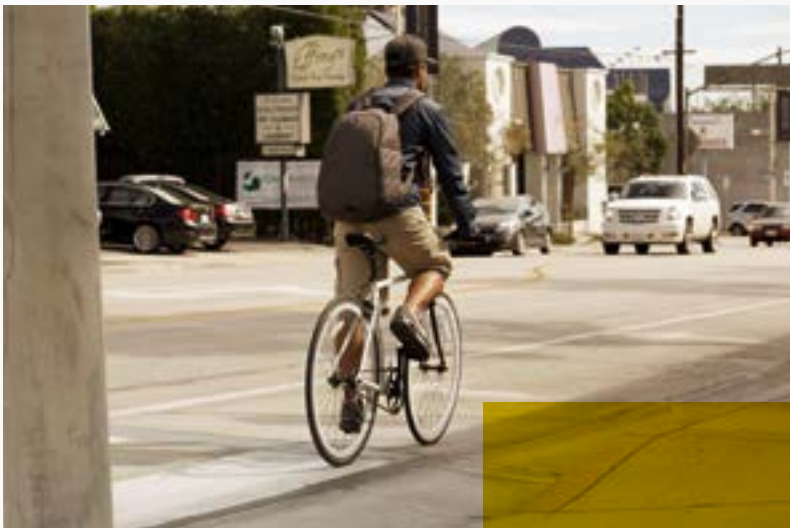
Model	2 services		3 services			4 services			
	12 months	24 months	12 months	24 months	36 months	12 months	24 months	36 months	48 months
New smart	£30.00	£15.00	£45.00	£22.50	£15.00	£60.00	£30.00	£20.00	£15.00

smart move assist

In good hands. The international smart move assist service provides free breakdown assistance in emergencies. Around the clock and 365 days a year. Your smart comes with a year's cover, which is renewed annually following a service with your local smart Retailer. Further information can be found in your owner's manual.

Full flexibility. Not just in road traffic.

The new manufacturer's warranty without mileage restrictions from smart offers you a comprehensive scope of protection. We also offer smart Service Care, which is a service plan designed to take care of your servicing costs for the next two, three or four services. smart Service Care is a great way of keeping your smart in the best shape at a Retailer whilst keeping the costs as transparent as possible.



24h service:

It's good to know that smart is there for you almost everywhere in Europe, 365 days a year. Should you ever need assistance, you can contact our call centre at any time on the toll-free number: 00800 2 777 7777, or alternatively 020 7975 7079¹. Please check with your telephone service provider before dialling.

¹Calls from mobile telephones may be subject to a charge depending on the service provider.

>> For tailor-made solutions: Financial services.

With a smart you always stay flexible – also when it comes to financing. Our leasing, financing and insurance products are designed to get you behind the wheel of your smart in no time at all. At attractive terms that can be tailored to your needs. Your smart Retailer will be pleased to advise you.

Leasing

Always drive a new car whilst remaining financially flexible – you simply agree to lease your smart for a fixed monthly rental, over a fixed term. Once the agreement comes to an end, so does your financial obligation. You simply hand the car back with nothing more to pay, subject to meeting the Vehicle Return Standards and your mileage has not been exceeded as charges may apply.

Financing

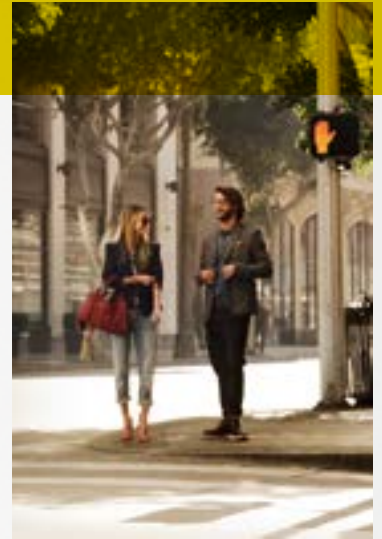
Would you like to finance your smart with instalments tailored to your needs? No problem. Talk to your smart Retailer about the options that smart is able to offer you in cooperation with Mercedes-Benz Financial Services. You can also enjoy great flexibility when it comes to financing – a flexible deposit and term allow you to budget precisely. Some of our finance products defer your decision whether to purchase or return your smart until the end of your agreement. smart will guarantee the future value of your vehicle which also lowers your monthly payments.





>> **For** an urban lifestyle: **The smart Collection.**

Attractively attired. The smart Collection perfectly complements your smart forfour. Just like the passion, prime and proxy equipment lines, all products in the smart Collection are designed for real characters. Discover wearable, useful and practical items for every day and almost every situation at www.smart.com/collection.



>> For a better overview.

Standard equipment

Exterior

- > 85° opening rear doors
- > Exterior mirrors – manually adjustable
- > Exterior mirror cap in tridion colour
- > Headlamps – H4 halogen
- > LED daytime running lights
- > Lockable service bonnet
- > Painted door handles
- > Painted front grille
- > Rear spoiler
- > Rear windscreen – heated, with timer control
- > Rear windscreen wiper with intermittent wiper control and automatic wipe/wash function
- > Side indicators in white
- > Tail lights
- > Third rear brake light
- > tridion safety cell – black

Interior

- > Centre console with pull-out tray and double cup holder
- > Dashboard and door centre panel in fabric and highlights in contrast colour
- > Gear shift lever – trimmed in leather
- > Headrests at the rear (x2)
- > Interior door opener in matt chrome
- > Interior lighting incl. reading light for driver and passenger
- > Load-lashing eyes in luggage compartment
- > Lockable glove compartment
- > Luggage compartment cover
- > Luggage compartment lighting
- > Passenger seat with through-loading function (flat-folding seatback)
- > Readyspace seats at rear with removable cargo box
- > Rear seats – backrests 50:50 split with cargo position
- > Steering wheel – multi-function 3-spoke, trimmed in leather
- > Storage compartment in front doors
- > Vanity mirror in sun visor with parking ticket holder for driver and passenger

Functions and electrics

- > 12 volt socket with cover
- > Automatic climate control
- > Central locking with radio remote control, visual locking-verification signal
- > Electric windows
- > Instrument cluster with multi-functional colour 3.5-inch display
- > Onboard computer
- > Outside temperature display with frost warning
- > smart Audio-System with AUX/USB interface, Bluetooth® interface with hands-free system, audio streaming for music transfer and for connection with smart cross connect app for iOS and Android (separately available on the App Store)

Technical features

- > 5-speed manual transmission
- > Automatic start/stop system
- > Direct-Steer system with speed-sensitive power assistance and variable steering ratio
- > Fuel tank (35 litres)

Safety and assistance systems

- > Airbag – kneebag for driver
- > Airbags – driver and passenger airbags
- > Airbags – sidebags for driver and front passenger (combined head/thorax airbags)
- > Alarm system with immobiliser
- > Anti-lock braking system (abs)
- > Brake Assist
- > Breakdown kit
- > Central locking with convenience closing features
- > Crash sensor for activation of hazard warning lights
- > Crosswind assist
- > Cruise control with Speedtronic variable speed limiter
- > Door mirror with aspherically curved mirror glass on the driver's side
- > Drive lock – doors locked automatically when vehicle is on the move
- > electronic stability programme (esp®)
- > Hill start assist
- > ISOFIX child seat attachment points on rear seats
- > Pedestrian impact protection front and side
- > Seat belts – three-point with seat belt tensioner and belt force limiters
- > Seatbelt reminder for driver and passenger
- > Front seat belts with height adjustment
- > tridion safety cell
- > Tyre pressure monitoring system



Features of the equipment lines

Model-specific features in addition to the standard equipment shown opposite:

passion

Exterior

- > 15-inch 8-spoke alloy wheels painted in silver
- > Radiator trim in black
- > Solid roof in tridion colour

Interior

- > Dashboard and door centre panel in orange fabric
- > Upholstery in black/orange fabric
- > Alternative of dashboard and door centre panel in black fabric
- > Alternative upholstery in black/white fabric

prime

Exterior

- > 15-inch 5-twin-spoke alloy wheels painted in black with a high-sheen finish
- > Panoramic roof with sun protection¹
- > Radiator trim in black²

Interior

- > Dashboard and door centre panel in black fabric
- > Dashboard instruments with cockpit clock and rev counter
- > Grab handle for front passenger
- > Sunglasses holder
- > Upholstery in black leather with white topstitching

Functions and electrics

- > Heated seats for driver and front passenger

Safety and assistance systems

- > Lane Keeping Assist with acoustic and visual warning

proxy

Exterior

- > 16-inch 8-Y-spoke alloy wheels painted in black
- > Panoramic roof with sun protection¹
- > Radiator trim in white³

Interior

- > Dashboard and door centre panel in blue fabric
- > Dashboard instruments with cockpit clock and rev counter
- > Grab handle for front passenger
- > Sunglasses holder
- > Upholstery in leather look/fabric in white/blue

Safety and assistance systems

- > Lane Keeping Assist with acoustic and visual warning

Sports package

- > 3-spoke multi-function sports steering wheel in leather
- > Brushed stainless steel sports pedals with rubber studs
- > Exhaust system with chrome plated tailpipe
- > Suspension lowered by 10 mm

¹Including sunglasses holder for driver and grab handle for front passenger.

²Alternatively in white or cool silver at no additional cost.

³Alternatively in black or cool silver at no additional cost.

Equipment packages

Equipment packages available for the passion, prime and proxy equipment lines

Comfort package

- > Height-adjustable driver's seat
- > Height-adjustable steering wheel
- > Heated and electrically adjustable exterior mirrors

Premium package

- > Comfort package
- > Rear parking assistance
- > smart Media-System: 7-inch capacitive multi-touch display; FM twin tuner and AM tuner; AUX/USB interface (centre console); voice control; Bluetooth® interface with hands-free system; audio streaming for music transfer; 3D navigation system with maps for the whole of Europe including 3 years of LIVE services (individually extendable thereafter); 4 speakers including 2 tweeters in mirror triangle

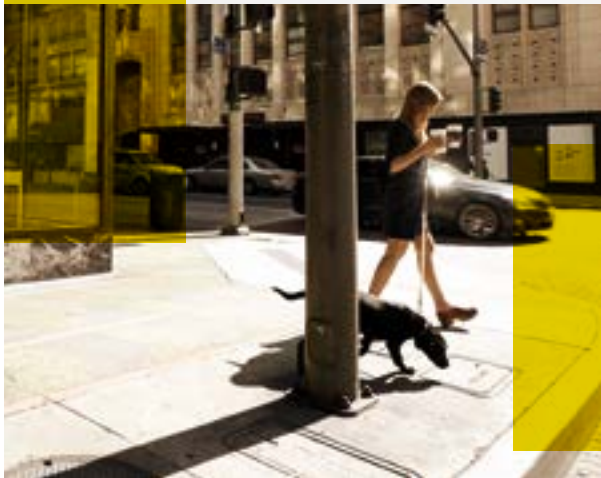
Equipment package available for the prime and proxy equipment lines

Premium Plus package

- > Comfort/Premium package
- > Ambient lighting: when driving at night, ambient lighting emphasises the stylish interior. Fibre optic cables in the door trim, centre console and footwell provide indirect, soft light
- > Coming home function: after dark, exterior lights illuminate the way to and from the house
- > Front fog lamps
- > Headlamps with LED light guide and LED tail lights: H4 halogen headlamps for low and high beam with fibre optic daytime running lamps and tail lights in semi-LED technology as well as direction indicators integrated into the front bumper below headlamps
- > Rain/light sensor: rain sensor controls the windscreen wipers, adapting wipe intervals to amount of rainfall. The accompanying light sensor automatically activates driving lights
- > Rear view camera

edition #1

- > Sports package; Comfort package; Premium package; Premium Plus package
- > bodypanels in graphite grey (metallic)
- > Dashboard and door centre panel in orange fabric and black highlights
- > Dashboard instruments with cockpit clock and rev counter
- > edition #1 badge on front door frame
- > Panoramic roof with sun protection¹
- > Radiator trim in black
- > tridion safety cell in lava orange, optionally in black
- > Upholstery in black/orange fabric
- > Velour floor mats with edition #1 lettering



Options

Exterior

- > Electric folding top in black fabric¹
- > Body in black-to-yellow (metallic), cadmium red (metallic), cool silver (metallic), graphite grey (metallic), hazel brown (metallic), lava orange (metallic), midnight blue (metallic)
- > tridion safety cell in black, white, cool silver (metallic)
- > Radiator trim in black², white, cool silver (metallic)

Interior

- > Dashboard and door centre panel – black fabric and white highlights
- > Upholstery in black/white fabric

Functions and electrics

- > Heated seats for driver and passenger

Safety and assistance systems

- > Forward collision warning with visual and acoustic warning
- > Lane Keeping Assist with acoustic and visual warning

Infotainment, navigation and communication

- > Smartphone cradle for Audio-System
- > Digital radio (DAB) for DAB, DAB+ and DMB standards

¹Including sunglasses holder for driver and grab handle for front passenger.

²Standard in conjunction with anti-theft alarm system.



>> Technical data.

	71 hp (52 kW) with automatic start/stop system	90 hp (66 kW) turbo with automatic start/stop system
Engine/type	3-cylinder in-line engine	3-cylinder in-line engine
Engine capacity in cc	999	898
Max power in hp (kW) at rpm¹	71 (52)/6,000	90 (66)/5,500
Max. torque in Nm at rpm¹	91/2,850	135/2,500
Compression ratio	10.5:1	9.5:1
Fuel delivery	Petrol injection	Petrol injection
Maximum speed in mph	94 ²	102 ²
Acceleration 0 – 62 mph in s	15.9	11.2
Engine position/drive	Transverse, rear-wheel drive	Transverse, rear-wheel drive
Transmission	Manual 5-speed	Manual 5-speed
Fuel consumption in mpg:^{3,4}		
urban cycle	58.9	55.4
extra-urban cycle ⁵	74.3	72.4
combined cycle	67.3	65.7
Fuel type	Premium unleaded	Premium unleaded
Exhaust gas purification/ exhaust gas standard	3-way catalytic converter/ EU6	3-way catalytic converter/ EU6
CO₂ emissions (combined) in g/km³	97	99
Wheels//tyres (front; rear) passion, prime	5.0 J × 15//165/65 R 15; 5.5 J × 15//185/60 R 15	5.0 J × 15//165/65 R 15; 5.5 J × 15//185/60 R 15
Wheels//tyres (front; rear) proxy, edition #1	6.0 J × 16//185/50 R 16; 6.5 J × 16//205/45 R 16	6.0 J × 16//185/50 R 16; 6.5 J × 16//205/45 R 16
Vehicle length/width/height in mm	3,495/1,665/1,555	3,495/1,665/1,555
Track width (front/rear) in mm	1,467/1,429	1,467/1,429
Wheelbase in mm	2,494	2,494
Turning circle in m	8.65	8.65
Kerb weight/payload in kg⁶	975/425	995/425
Permissible total weight kg	1,400	1,420
Luggage compartment capacity in l	185 – 975	185 – 975
Tank capacity/of which reserve in l	35/5.0	35/5.0
Insurance group rating	2E	tba
Service interval⁷	12,500 miles/1 year	12,500 miles/1 year
Warranty in years	3 unlimited	3 unlimited
Guaranteed mobility in years	up to 30 ⁸	up to 30 ⁸

¹Figures according to Directive 80/1269/EEC in the current applicable version. ²Electronically limited. ³All figures are based on a standard specification with smallest tyre size.

⁴The choice of wheels and transmissions may affect CO₂ emissions and corresponding Road Fund Licence. ⁵EUDC: extra-urban driving cycle. Testing procedures adhere to EU Directive 93/116. ⁶Figures in accordance with Directive 92/21/EC in the version 95/48/EC mass in running order, fuel tank 90% full, with driver, 68 kg and luggage, 7 kg for vehicles with standard equipment. Optional equipment and accessories generally increase this figure, which means that the payload is reduced accordingly. ⁷Whichever comes first.

Service interval shown via multifunction display. An oil change plus has to be carried out every 12,500 miles or once a year. ⁸Subject to full Terms and Conditions, dependent on date of registration, available upon request.

Figures are correct at the time of going to print. Please refer to the government website for latest data – www.vca.gov.uk

smart infocentre 0333 222 0600

 www.facebook.com/smartcaruk

 @smartcarUK



We are pleased to take back your smart for environment-friendly disposal in accordance with the European Union (EU) Directive on End-of-Life Vehicles – but that day lies a long way off. To make it as easy as possible for you to return the vehicle, a network of companies exists which will take back your old car and dismantle and recycle it. You can return your vehicle to one of these companies free of charge. In this way you make a valuable contribution to closing the recycling loop and to saving resources. Further information on recycling end-of-life vehicles and the conditions of return is available at www.thesmart.co.uk.

Regarding the information in this publication: changes to the product may have been made after going to press on 20 June 2014. The manufacturer reserves the right to effect structural or design modifications, colour changes and changes to the scope of delivery during the delivery period, insofar as such changes or modifications are reasonable for the buyer in due consideration of the seller's interests. Should the seller or the manufacturer employ codes or numbers to describe the order or object ordered, this alone shall not constitute a valid basis for the derivation of any rights. The photographs may include accessories or options that are not part of the standard scope of delivery. Any colour deviations result from the printing process. This publication may also contain variants and services that are not available in individual countries. Information on statutory, legal and fiscal provisions and their consequences apply only to the Federal Republic of Germany at the time that this publication goes to press. Please refer any questions on the provisions that currently apply in other countries and their effects to your smart sales representative.

www.thesmart.co.uk

smart – a Daimler Brand