



SENTRA®

2025





On point and fashionably on time

It's time to be bold, confident, and unapologetically stylish in every way. And why not bring advanced technology and a premium feel along for the ride? You'll find that in the 2025 Nissan Sentra®. Where it takes you is up to you — but everyone will know you've arrived.



A statement piece meant to move you

Go ahead: look and touch. It starts with the premium comfort of available leatherette seats. Take in the small details, like artful stitching, and the big ones, like the available moonroof with its unparalleled view of the stars and sky. Intuitive controls like the elevated touch-screen display keep your technology at your fingertips.² And with finishing touches like chrome accents and Nissan GT-R™-inspired air vents, Sentra® delights the senses at every turn.

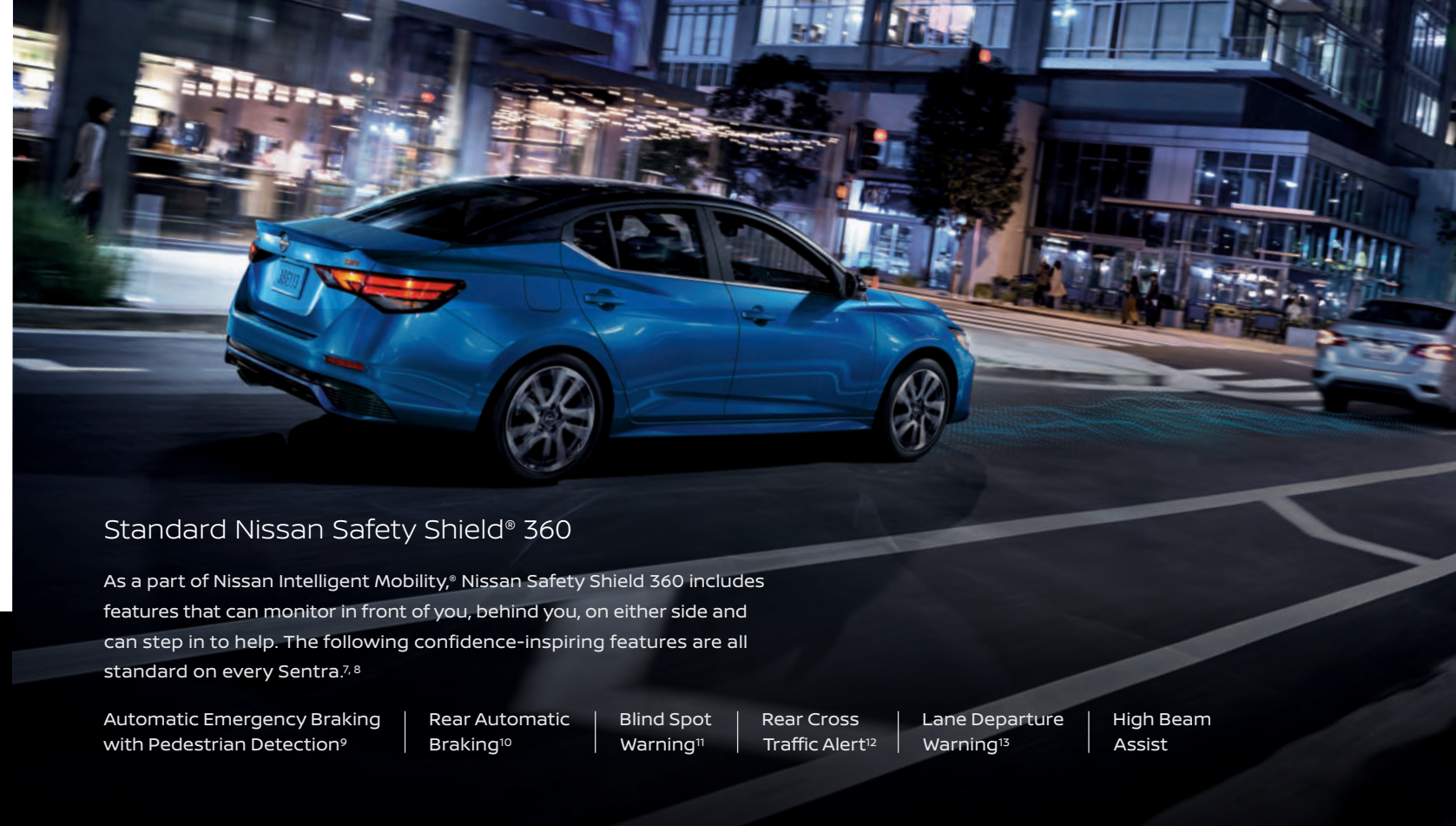
Nissan Sentra® SR shown in Charcoal Leatherette with optional equipment.



Up to
40 Hwy mpg³

Plenty of punch

Get a kick out of your Sentra® with a responsive, energetic engine that delivers on the power and the mpg.³ Sentra's low, wide stance hugs the road, reminding you that driving is supposed to feel fun. And with a sport-tuned suspension that helps to smooth out your drive, you'll never want to settle for less.



Standard Nissan Safety Shield® 360

As a part of Nissan Intelligent Mobility®, Nissan Safety Shield 360 includes features that can monitor in front of you, behind you, on either side and can step in to help. The following confidence-inspiring features are all standard on every Sentra.^{7, 8}

- Automatic Emergency Braking with Pedestrian Detection⁹
- Rear Automatic Braking¹⁰
- Blind Spot Warning¹¹
- Rear Cross Traffic Alert¹²
- Lane Departure Warning¹³
- High Beam Assist



Level up with next-level tech

Apple CarPlay® integration People to see? Places to be? Just ask Siri.® Equipped with Siri® voice control, Apple CarPlay® brings your contacts, favorite messaging apps, Apple Music® playlists, Apple Maps, and more on board to your Sentra. Simply plug in your compatible iPhone® and go.^{2, 4, 5, 6}



Android Auto™ compatibility Talk to Google Assistant on Android Auto and get things done with your voice. Easily send messages, get directions, control media, and more. Just say, "Hey Google" or, in compatible cars, long-press the voice control button on your steering wheel to get started.^{2, 4, 5, 6}

Change is constant, so adapt in an instant

Road trip-minded but built for spontaneity – Sentra features a wide, accessible trunk that lets you bring bulkier items with ease. The 60/40-split rear seats give you options on how to flex your space, allowing you to bring long items like skis or drop down both seats for maximum cargo space.¹⁴ Once you're on the road, available front and rear USB ports keep your passengers charged up, while an available built-in Wi-Fi Hotspot helps keep everyone in the loop.^{2, 5, 15}



CHOOSE YOUR COLOR

■ Standard

P1 Part of SV Premium Package

P2 Part of SR Premium Package

Nissan has taken care to ensure that the color swatches presented here are the closest possible representations of actual vehicle colors. Swatches may vary slightly due to the printing process and whether viewed in daylight, fluorescent or incandescent light. Please see the actual colors at your dealer.

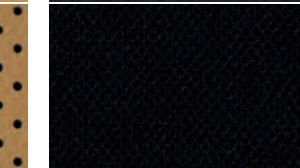
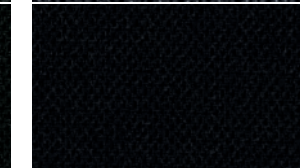
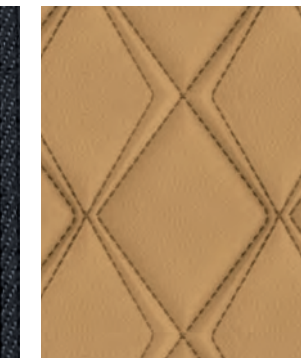
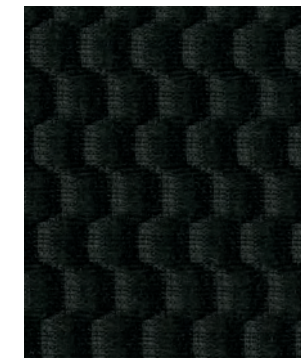
| | Fresh Powder | | | Aspen White TriCoat ¹ | | | Atlantic Gray Metallic ¹ | | |
|----------------------------------|--------------|----|----|----------------------------------|----|----|-------------------------------------|----|----|
| | S | SV | SR | S | SV | SR | S | SV | SR |
| Charcoal Cloth | ■ | | | | | | | | |
| Charcoal Premium Cloth | | ■ | | | ■ | | | ■ | |
| Tan Quilted Leather appointments | | | | | P1 | | | P1 | |
| Charcoal Sport Cloth | | | | | | ■ | | | ■ |
| Charcoal Leatherette | | | | | | P2 | | | P2 |

| | Gun Metallic | | | Scarlet Ember Tintcoat ¹ | | | Rosewood Metallic | | | Electric Blue Metallic | | | Super Black | | |
|----------------------------------|--------------|----|----|-------------------------------------|----|----|-------------------|----|----|------------------------|----|----|-------------|----|----|
| | S | SV | SR | S | SV | SR | S | SV | SR | S | SV | SR | S | SV | SR |
| Charcoal Cloth | ■ | | | | | | | | | | | | ■ | | |
| Charcoal Premium Cloth | | ■ | | | | | | ■ | | | | | | ■ | |
| Tan Quilted Leather appointments | | P1 | | | P1 | | | P1 | | | P1 | | | P1 | |
| Charcoal Sport Cloth | | | ■ | | | ■ | | | | | | ■ | | | ■ |
| Charcoal Leatherette | | | P2 | | | P2 | | | | | | P2 | | | P2 |



CHOOSE YOUR INTERIOR

| | Two-tone Aspen White TriCoat / Super Black ¹ | | | Two-tone Atlantic Gray Metallic / Super Black ¹ | | | Two-tone Monarch Orange Metallic / Super Black ¹ | | | Two-tone Electric Blue Metallic / Super Black ¹ | | |
|----------------------------------|---|----|----|--|----|----|---|----|----|--|----|----|
| | S | SV | SR | S | SV | SR | S | SV | SR | S | SV | SR |
| Charcoal Cloth | | | | | | | | | | | | |
| Charcoal Premium Cloth | | | | | | | | | | | | |
| Tan Quilted Leather appointments | | | | | | | | | | | | |
| Charcoal Sport Cloth | | | ■ | | | ■ | | | ■ | | | ■ |
| Charcoal Leatherette | | | P2 | | | P2 | | | P2 | | | P2 |



Charcoal Cloth
S

Charcoal Premium Cloth
SV

Tan Quilted Leather appointments
SV

Charcoal Sport Cloth
SR

Charcoal Leatherette
SR

CHOOSE YOUR TRIM LEVEL

S

2.0-liter 4-cylinder engine with 149 hp and 146 lb-ft of torque, Xtronic CVT® (Continuously Variable Transmission), Independent strut front and multi-link rear suspension, Dual-pinion electric power steering, Cruise control, Intelligent Forward Collision Warning,¹⁶ Automatic Emergency Braking with Pedestrian Detection,⁹ Lane Departure Warning,¹³ Rear Cross Traffic Alert,¹² Blind Spot Warning,¹¹ RearView Monitor,¹⁷ Rear Sonar System,¹⁸ Rear Automatic Braking,¹⁰ Intelligent Engine Brake, Active Ride Control, Intelligent Trace Control,¹⁹ Hill start assist, High Beam Assist, Intelligent Driver Alertness,²⁰ Idle stop/start, 16" Steel wheels with full wheel covers, Active grille shutters, Intelligent Auto Headlights, Body-color dual power outside mirrors, Chrome V-Motion grille, Power windows with one-touch driver-side auto-up/down, Power door locks with auto-locking feature, Rear Door Alert,²¹ Remote keyless entry with push button ignition, Cloth seat trim, 4.2" Advanced Drive-Assist® Display,²² NissanConnect® 7" color touch-screen display,² Voice Recognition,⁶ Apple CarPlay® integration,² Android Auto™ compatibility,² Siri® Eyes Free,² Hands-free Text Messaging Assistant,⁴ Bluetooth® Hands-free Phone System,² One USB-A port,⁵ Streaming Audio via Bluetooth,^{8,2} Radio Data System (RDS), Ten standard air bags,²³ Tire Pressure Monitoring System (TPMS) with individual tire pressure display and Easy-Fill Tire Alert,^{24, 25} Nissan Vehicle Immobilizer System



SV INCLUDES S EQUIPMENT PLUS:

Intelligent Cruise Control,²⁶ 16" Aluminum-alloy wheels, Nissan Intelligent Key® with Push Button Ignition, Premium cloth seat trim, 7" Advanced Drive-Assist Display,²² NissanConnect® 8" color touch-screen display,² Two USB-A ports and one USB-C port,⁵ SiriusXM® with 3-month subscription included,² Vehicle Security System

AVAILABLE PACKAGES:

- All-Weather Package
- Premium Package
- NissanConnect® Services Package



SR INCLUDES SV EQUIPMENT PLUS:

18" Aluminum-alloy wheels, LED headlights with LED signature Daytime Running Lights, Outside mirrors with LED turn signal indicators, Heated outside mirrors, Dark chrome V-Motion grille, Black outside mirrors, Side sill extensions, Sport rear design, Body-color rear spoiler, Chrome exhaust finisher, Dual Zone Automatic Temperature Control, Remote Engine Start System with Intelligent Climate Control,²⁷ Sport cloth seat trim with contrast stitching, TailorFit®-wrapped steering wheel, Leather-wrapped shift knob, Rear center armrest with cupholders

AVAILABLE PACKAGES:

- Premium Package



CHOOSE YOUR PACKAGE

ALL-WEATHER PACKAGE | SV

Heated outside mirrors, Dual Zone Automatic Temperature Control, Remote Engine Start System with Intelligent Climate Control,²⁷ Heated front seats, Leather-wrapped and heated steering wheel



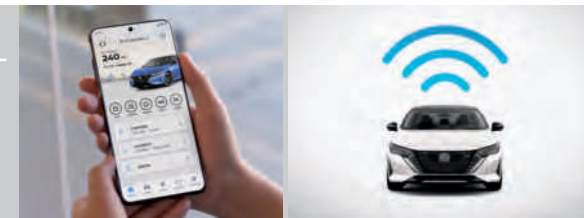
PREMIUM PACKAGE (Includes All-Weather Package) | SV

Intelligent Around View® Monitor,²⁸ 17" Aluminum-alloy wheels, Outside mirrors with LED turn signal indicators, Power sliding glass moonroof, 6-way power adjustable driver's seat with 2-way power lumbar, Quilted leather-appointed seats, Leather-wrapped shift knob, Rear center armrest with cupholders, Bose Premium Audio System with eight speakers



NISSANCONNECT® SERVICES PACKAGE | SV

NissanConnect® Services powered by SiriusXM® with trial access to 5-year Select and 3-year Premium packages,² Wi-Fi Hotspot^{2, 15}



PREMIUM PACKAGE | SR

Intelligent Around View® Monitor,²⁸ Power sliding glass moonroof, Sun visors with illuminated vanity mirrors, 6-way power adjustable driver's seat with 2-way power lumbar, Leatherette seats with contrast stitching, Center console soft knee pads, Leather-wrapped and heated steering wheel, NissanConnect® Services powered by SiriusXM® with trial access to 5-year Select and 3-year Premium packages,² Wi-Fi Hotspot,^{2, 15} Bose Premium Audio System with eight speakers



GENUINE NISSAN ACCESSORIES

There's nothing wrong with being a little extra

Every Genuine Nissan Accessory is custom-fit, custom-designed, and durability-tested. Each one is backed by Nissan's 3-year/36,000-mile (whichever occurs first) limited warranty (if installed by the dealer at the time of new vehicle purchase) and can be financed when installed by the dealer at time of new vehicle purchase.²⁹



For more information and to shop online for Sentra® Genuine Nissan Accessories, scan the QR code.



Nissan Sentra® SV shown in Scarlet Ember Tintcoat¹ with Exterior Ground Lighting w/ Logo, Splash Guards (4-piece set), Side-Window Deflectors, Rear Spoiler, and Clear Rear Bumper Protector.

CHOOSE YOUR ACCESSORIES

A. **Virtual Key³⁰**

Lock and unlock doors and start your Nissan — all without a key — by using an app on your compatible smartphone or Apple Watch.[®]

B. **All-Season Floor Mats (4-piece set)**

Stepping in from the rain or snow? No problem.

C. **Carpeted Trunk Area Protector and Cargo Blocks/Stabilizers (sold separately)¹⁴**

Keep your trunk area clean and protected, and keep your gear from sliding around.

D. **Illuminated Kick Plates³¹ and Carpeted Floor Mats (4-piece set) (sold separately)**

Protect your door entry and carpeted floor with the added bonus of a stylish glow and premium feel.

E. **Shopping Bag Hook¹⁴**

For those items you don't want rolling around in the trunk.

F. **Seatback Organizer**

Keep your seatbacks clean and your interior organized. The large pouch is perfect for notepads, magazines, electronics, and more.

G. **18" Black Aluminum-Alloy Wheels**

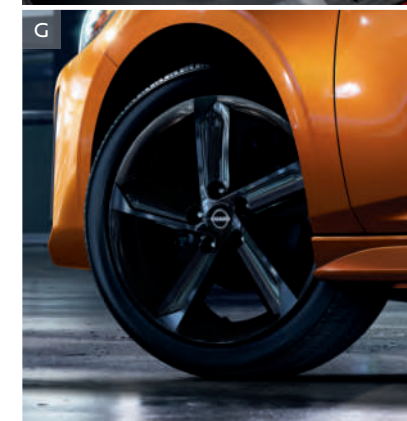
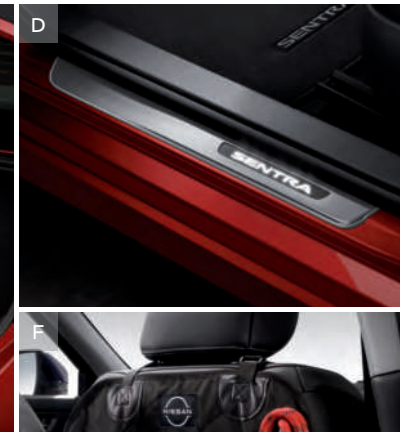
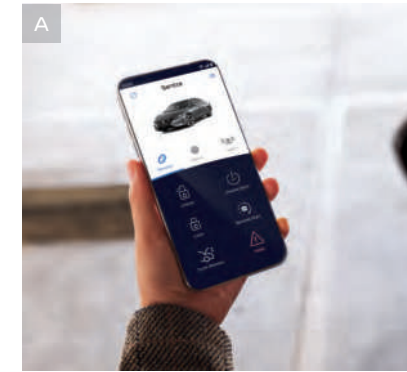
Cruise with some attitude with these stylish and strong black aluminum-alloy 5-spoke design wheels.

H. **Sport Pedals³² and Interior Accent Lighting (sold separately)**

Upgrade your pedals and give your interior 20 different colors of personalized, LED glow.

Additional Accessories:

- Dual Camera Drive Recorder³³
- Wireless Smartphone Charger⁵
- Trash Bin
- Front Sill Plate Protectors
- Frameless Auto-Dimming Rearview Mirror w/ HomeLink[®]
- Security Impact Sensor
- All-Season Trunk Area Protector
- Soft Sided Cargo Cooler
- Console Liners
- Hideaway Trunk Cargo Net
- Wheel Locks
- And More



SPECIFICATIONS

| Engine | S | SV | SR |
|---|---|----|----|
| 2.0-liter Direct Injection Gasoline (DIG) DOHC 16-valve 4-cylinder engine | ■ | ■ | ■ |
| Horsepower — 149 hp @ 6,000 rpm | | | |
| Torque — 146 lb-ft @ 4,000 rpm | | | |
| Continuously Variable Valve Timing Control System (CVTCS) | ■ | ■ | ■ |
| Idle stop/start | ■ | ■ | ■ |

| Drivetrain | S | SV | SR |
|---|---|----|----|
| Front-Wheel Drive (FWD) | ■ | ■ | ■ |
| Xtronic CVT® (Continuously Variable Transmission) | ■ | ■ | ■ |

| Brakes | S | SV | SR |
|---|---|----|----|
| Front vented disc and rear drum brakes | ■ | | |
| Front vented and rear solid disc brakes | | ■ | ■ |
| Anti-lock Braking System (ABS) | ■ | ■ | ■ |
| Electronic Brake force Distribution (EBD) | ■ | ■ | ■ |
| Brake Assist ³⁴ | ■ | ■ | ■ |

| Suspension/Steering | S | SV | SR |
|--|---|----|----|
| Independent strut front and multi-link rear suspension | ■ | ■ | ■ |
| Front and rear stabilizer bars | ■ | ■ | ■ |
| Dual-pinion electric power steering | ■ | ■ | ■ |

| Driver Assistance Technologies | S | SV | SR |
|--|---|----|----|
| Cruise control | ■ | | |
| Intelligent Cruise Control ²⁶ | | ■ | ■ |
| Intelligent Forward Collision Warning ¹⁶ | ■ | ■ | ■ |
| Automatic Emergency Braking with Pedestrian Detection ⁹ | ■ | ■ | ■ |
| Lane Departure Warning ¹³ | ■ | ■ | ■ |
| Rear Automatic Braking ¹⁰ | ■ | ■ | ■ |
| Blind Spot Warning ¹¹ | ■ | ■ | ■ |
| Rear Cross Traffic Alert ¹² | ■ | ■ | ■ |
| RearView Monitor ¹⁷ | ■ | ■ | ■ |
| Intelligent Around View® Monitor ²⁸ | | P1 | P2 |
| Rear Sonar System ¹⁸ | ■ | ■ | ■ |
| Vehicle Dynamic Control (VDC) with Traction Control System (TCS) ³⁵ | ■ | ■ | ■ |
| Intelligent Engine Brake | ■ | ■ | ■ |
| Active Ride Control | ■ | ■ | ■ |
| Intelligent Trace Control ¹⁹ | ■ | ■ | ■ |
| Hill start assist | ■ | ■ | ■ |
| High Beam Assist | ■ | ■ | ■ |
| Intelligent Driver Alertness ²⁰ | ■ | ■ | ■ |

| Wheels/Tires | S | SV | SR |
|---|---|----|----|
| 16" Steel wheels with full wheel covers | ■ | | |
| 16" Aluminum-alloy wheels | | ■ | |
| 17" Aluminum-alloy wheels | | P1 | |
| 18" Aluminum-alloy wheels | | | ■ |
| P205/60R16 All-season tires | ■ | ■ | |
| P215/50R17 All-season tires | | P1 | |
| P215/45R18 All-season tires | | | ■ |

| Exterior Features | S | SV | SR |
|--|---|----|----|
| Active grille shutters | ■ | ■ | ■ |
| Intelligent Auto Headlights | ■ | ■ | ■ |
| Halogen headlights | ■ | ■ | |
| LED headlights with LED signature Daytime Running Lights | | | ■ |
| Dual power outside mirrors | ■ | ■ | ■ |
| Heated outside mirrors | | AW | ■ |
| Outside mirrors with LED turn signal indicators | | P1 | ■ |
| Power sliding glass moonroof | | P1 | P2 |
| Chrome V-Motion grille | ■ | ■ | |
| Dark chrome V-Motion grille | | | ■ |
| Body-color outside mirrors | ■ | ■ | |
| Black outside mirrors | | | ■ |
| Side sill extensions | | | ■ |
| Sport rear design | | | ■ |
| Body-color rear spoiler | | | ■ |
| Chrome exhaust finisher | | | ■ |

| Comfort/Convenience | S | SV | SR |
|---|---|----|----|
| Air conditioning | ■ | ■ | |
| Dual Zone Automatic Temperature Control | | AW | ■ |
| In-cabin microfilter | ■ | ■ | ■ |
| Power windows with one-touch driver-side auto-up/down | ■ | ■ | ■ |
| Power door locks with auto-locking feature | ■ | ■ | ■ |
| Rear Door Alert ²¹ | ■ | ■ | ■ |
| Remote keyless entry with push button ignition | ■ | | |
| Nissan Intelligent Key® with Push Button Ignition | | ■ | ■ |
| Remote Engine Start System with Intelligent Climate Control ²⁷ | | AW | ■ |
| Tilt and telescoping steering column | ■ | ■ | ■ |
| Variable intermittent flat-blade windshield wipers | ■ | ■ | ■ |
| Sun visors with vanity mirrors | ■ | ■ | ■ |
| Sun visors with illuminated vanity mirrors | | | P2 |

| Seating/Appointments | S | SV | SR |
|--|---|----|----|
| 6-way adjustable driver's seat | ■ | ■ | ■ |
| 6-way power adjustable driver's seat with 2-way power lumbar | | P1 | P2 |
| 4-way adjustable front-passenger's seat | ■ | ■ | ■ |
| Rear center armrest with cupholders | | P1 | ■ |
| 60/40-split fold-down rear seatbacks | ■ | ■ | ■ |
| Cloth seat trim | ■ | | |
| Premium cloth seat trim | | ■ | |
| Quilted leather-appointed seats | | P1 | |
| Sport cloth seat trim with contrast stitching | | | ■ |
| Leatherette seats with contrast stitching | | | P2 |
| Heated front seats | | AW | ■ |
| Heated steering wheel | | AW | P2 |
| TailorFit®-wrapped steering wheel | | | ■ |
| Leather-wrapped steering wheel | | AW | P2 |
| Leather-wrapped shift knob | | P1 | ■ |
| Center console soft knee pads | | | P2 |

| Infotainment | S | SV | SR |
|--|---|-----|----|
| 4.2" Advanced Drive-Assist® Display ²² | ■ | | |
| 7" Advanced Drive-Assist Display ²² | | ■ | ■ |
| NissanConnect® 7" color touch-screen display ² | ■ | | |
| NissanConnect® 8" color touch-screen display ² | | ■ | ■ |
| Voice Recognition ⁶ | ■ | ■ | ■ |
| Apple CarPlay® integration ² | ■ | ■ | ■ |
| Android Auto™ compatibility ² | ■ | ■ | ■ |
| NissanConnect® Services powered by SiriusXM® with trial access to 5-year Select and 3-year Premium packages ² | | NCS | P2 |
| Wi-Fi Hotspot ^{2, 15} | | NCS | P2 |
| Hands-free Text Messaging Assistant ⁴ | ■ | ■ | ■ |
| Bluetooth® Hands-free Phone System ² | ■ | ■ | ■ |
| AM/FM audio system with four speakers | ■ | | |
| AM/FM audio system with six speakers | | ■ | ■ |
| Bose Premium Audio System with eight speakers | | P1 | P2 |
| Steering wheel-mounted audio controls | ■ | ■ | ■ |
| Speed-sensitive volume control | ■ | ■ | ■ |
| Auxiliary audio input jack ⁵ | ■ | ■ | ■ |
| One USB-A port ⁵ | ■ | | |
| Two USB-A ports and one USB-C port ⁵ | | ■ | ■ |
| SiriusXM® with 3-month subscription included ² | | ■ | ■ |
| Streaming Audio via Bluetooth® ² | ■ | ■ | ■ |
| Radio Data System (RDS) | ■ | ■ | ■ |

| Safety/Security | S | SV | SR |
|--|---|----|----|
| Nissan Advanced Air Bag System with dual-stage supplemental front air bags with seat-belt and occupant-classification sensors ²³ | ■ | ■ | ■ |
| Seat-mounted side-impact supplemental air bags for front- and rear-seat outboard occupants ²³ | ■ | ■ | ■ |
| Driver and front-passenger supplemental knee air bags ²³ | ■ | ■ | ■ |
| Roof-mounted curtain side-impact supplemental air bags with rollover sensor for front- and rear-seat outboard occupant head protection ²³ | ■ | ■ | ■ |
| 3-point ALR/ELR seat belt system (ELR only for driver) | ■ | ■ | ■ |
| Front and rear seat belts with pretensioners and load limiters | ■ | ■ | ■ |
| LATCH System (Lower Anchors and Tethers for Children) | ■ | ■ | ■ |
| Zone Body construction with front and rear crumple zones | ■ | ■ | ■ |
| Hood buckling creases and safety stops | ■ | ■ | ■ |
| Pipe-style steel side-door guard beams | ■ | ■ | ■ |
| Energy-absorbing steering column | ■ | ■ | ■ |
| Tire Pressure Monitoring System (TPMS) with individual tire pressure display and Easy-Fill Tire Alert ^{24, 25} | ■ | ■ | ■ |
| Nissan Vehicle Immobilizer System | ■ | ■ | ■ |
| Vehicle Security System | | ■ | ■ |

DIMENSIONS/CAPACITIES/CURB WEIGHTS/MPG

| Exterior Dimensions — Inches | S | SV | SR |
|------------------------------|----------|-----------|-----------|
| Exterior | S | SV | SR |
| Wheelbase | 106.6 | 106.6 | 106.6 |
| Overall length | 182.9 | 182.9 | 182.9 |
| Overall width | 71.5 | 71.5 | 71.5 |
| Overall height | 56.9 | 56.9 | 57.0 |
| Track width (front) | 62.5 | 61.9 | 62.3 |
| Track width (rear) | 62.4 | 61.8 | 62.2 |

| Interior Dimensions — Inches | S | SV | SR |
|---|-----------|-----------|-----------|
| Interior | | | |
| Head room without moonroof (front/rear) | 38.9/36.7 | 38.9/36.7 | 38.9/36.7 |
| Head room with moonroof (front/rear) | - | 37.5/36.7 | 37.5/36.7 |
| Shoulder room (front/rear) | 56.4/54.5 | 56.4/54.5 | 56.4/54.5 |
| Hip room (front/rear) | 53.5/53.3 | 53.5/53.3 | 53.5/53.3 |
| Leg room (front/rear) | 43.8/34.9 | 43.8/34.9 | 43.8/34.9 |

| Capacities | S | SV | SR |
|--|---|------|----|
| Seating capacity | | 5 | |
| Interior passenger volume without moonroof (cu. ft.) | | 96.1 | |
| Interior passenger volume with moonroof (cu. ft.) | | 94.1 | |
| Cargo capacity (cu. ft.) ¹⁴ | | 14.3 | |
| Fuel tank (gals.) | | 12.4 | |

| Curb Weights — Lbs. | S | SV | SR |
|---------------------|--------------|--------------|--------------|
| Base total | 3,036 | 3,038 | 3,084 |

| 2025 EPA Fuel Economy Estimates ³ | S | SV | SR |
|--|----------|-----------|-----------|
| City/Hwy/Combined mpg | S | SV | SR |
| | 30/40/34 | 30/40/34 | 30/38/33 |

NISSAN ROADSIDE ASSISTANCE

Your peace of mind is on us. For 36 months or 36,000 miles, whichever comes first, your new Nissan is covered for the following:³⁶

- Flat-tire changes
- Trip Interruption benefits
- Jump starts
- Vehicle lockouts
- Emergency fuel delivery

visit NissanUSA.com/sentra

PRINTED IN USA



Sign up to get the latest on
Nissan vehicles, news, and events.

<https://www.nissanusa.com/brochures/request-brochure.html>

¹Extra cost option. ²Compatible device, service, and consumer activation of NissanConnect Services package required. Use only when safe and legal. Subject to third party service availability. For more information see [NissanUSA.com/connect/legal](https://www.nissanusa.com/connect/legal). ³2025 EPA Fuel Economy Estimates. 30 City MPG / 40 Highway MPG / 34 Combined MPG for Sentra® S, SV; 30 City MPG / 38 Highway MPG / 33 Combined MPG for Sentra SR. Actual mileage may vary with driving conditions. Use for comparison only. ⁴Use Hands Free Text Messaging when parked in a safe location. If you must use while driving, monitor traffic conditions and keep both hands on the steering wheel to prevent collisions. Compatible device required. Message and data rates may apply. ⁵Driving is serious business and requires your full attention. If you have to use the connected device while driving, exercise extreme caution at all times so full attention may be given to vehicle operation. External device not included. ⁶Never program while driving. GPS mapping may not be detailed in all areas or reflect current road status. ⁷Availability of features vary by vehicle model year, model, trim level, packaging, and options. Please see Owner's Manual for important feature information. ⁸Nissan Safety Shield technologies can't prevent all collisions or warn in all situations. See Owner's Manual for important safety information. ⁹Automatic Emergency Braking with Pedestrian Detection cannot prevent all collisions and may not provide warning or braking in all conditions. Driver should monitor traffic conditions and brake as needed to prevent collisions. See Owner's Manual for safety information. ¹⁰Rear Automatic Braking cannot prevent all collisions and may not provide warning or braking in all conditions. Driver should always turn and check surroundings before driving and brake as needed to prevent collisions. See Owner's Manual for safety information. ¹¹Blind Spot Warning cannot prevent collisions and may not detect every object or warn in all situations. Driver should always turn and look before changing lanes. See Owner's Manual for safety information. ¹²Rear Cross Traffic Alert may not detect all vehicles. See Owner's Manual for safety information. ¹³Lane Departure Warning only operates when lane markings or road edge (if equipped) are able to be detected. See Owner's Manual for safety information. ¹⁴Cargo shown for display purposes only. Cargo and load capacity limited by weight and distribution. Always secure cargo. ¹⁵Available only on Nissan vehicles with AT&T-compatible in-vehicle Wi-Fi hotspot capability. Subject to third party service availability. Trial activation required. Trial ends when all data is used or period ends, whichever comes first. Use features only when safe and legal. Data charges may apply. Subject to AT&T terms and conditions and its privacy policy, and are not within Nissan's control. Visit www.att.com/csa for complete terms and conditions. Trial subscription is subject to change or early termination at any time without notice. Trademarks and trade names are those of their respective owners. ¹⁶Intelligent Forward Collision Warning cannot prevent collisions. See Owner's Manual for safety information. ¹⁷RearView Monitor may not detect every object and does not eliminate blind spots or warn of moving objects. See Owner's Manual for safety information. ¹⁸Sonar System may not detect every object. Driver should always check surroundings before driving. See Owner's Manual for safety information. ¹⁹Intelligent Trace Control cannot prevent collisions or loss of control. Driver should remain in control of vehicle at all times. See Owner's Manual for safety information. ²⁰Intelligent Driver Alertness cannot provide a warning in every situation. See Owner's Manual for safety information. ²¹Rear Door Alert System does not detect people or cargo. Always check rear seat before exiting. See Owner's Manual for safety information. ²²Information displayed is dependent on how vehicle is equipped. Driving is serious business and requires your full attention. If you have to use the feature while driving, exercise extreme caution at all times so full attention may be given to vehicle operation. ²³Air bags are only a supplemental restraint system. Always wear your seat belt. Rear-facing child restraints should not be placed in the front-passenger's seat. All children 12 and under should ride in the rear seat properly secured in child restraints, booster seats, or seat belts according to their size. Air bags will only inflate in certain accidents. See Owner's Manual for safety information. ²⁴Tire Pressure Monitoring System is not a substitute for regular tire pressure checks. See Owner's Manual for safety information. ²⁵Vehicle must be on for the Easy-Fill Tire Alert to operate. ²⁶Intelligent Cruise Control uses limited braking and is not a collision avoidance or warning system. Driver should monitor traffic conditions and brake as needed to prevent collisions. See Owner's Manual for safety information. ²⁷Remote Engine Start System to be used only in accordance with laws or rules in effect in your vehicle's location. ²⁸Intelligent Around View® Monitor cannot eliminate blind spots and may not detect every object. Driver should always turn and check surroundings before driving. See Owner's Manual for safety information. ²⁹For complete information concerning warranty coverage, conditions, limitations, and exclusions, see your Nissan dealer, [parts.NissanUSA.com](https://www.nissanusa.com) and read your vehicle's Warranty Information Booklet. ³⁰Compatible smartphone required. Virtual Key to be used only in accordance with laws or rules in effect in your vehicle's location. Actual maximum distance for operation will vary depending on obstructions between compatible device and vehicle. ³¹Only front kick plates illuminate. ³²Vehicle shown is for illustrative purposes only. Not representative of brochure's model year/model. ³³Dual Camera Drive Recorder to be used only in accordance with any laws or rules in effect in your vehicle's location that may apply to audio or video recordings of drivers and passengers. ³⁴Brake Assist cannot prevent all collisions and may not provide warning or braking in all conditions. Driver should monitor traffic conditions and brake as needed to prevent collisions. See Owner's Manual for safety information. ³⁵Vehicle Dynamic Control cannot prevent collisions due to abrupt steering, carelessness, or dangerous driving techniques. It should remain on when driving, except when freeing the vehicle from mud or snow. See Owner's Manual for safety information. ³⁶Roadside assistance coverage period varies by model year/model. For complete information concerning warranty coverage, conditions and exclusions, see your Nissan dealer and read the warranty information booklet for the model year/model. Apple CarPlay®, Apple Music®, Apple Watch®, Siri®, and Siri® Eyes Free are registered trademarks of Apple, Inc. Bluetooth® word mark and logos are owned by Bluetooth SIG, Inc., and any use of such marks by Nissan is under license. Bose® is a registered trademark of The Bose Corporation. Google, Android Auto, Google Maps, YouTube Music, and other marks are trademarks of Google LLC. Google Assistant is not available in certain languages and countries. Compatible Android phone and compatible active data plan required. HomeLink® is a registered trademark of Centex Corporation. iPhone® is a registered trademark of Apple, Inc. All rights reserved. iPhone® or other external device not included. SiriusXM® is a registered trademark of SiriusXM Radio Inc. This brochure is intended for general descriptive and informational purposes only. It is subject to change and does not constitute an offer, representation or warranty (express or implied) by Nissan North America, Inc. Interested parties should confirm the accuracy of any information in this brochure as it relates to a vehicle directly with Nissan North America, Inc., before relying on it to make a purchase decision. Nissan North America, Inc., reserves the right to make changes, at any time, without prior notice, in prices, colors, materials, equipment, specifications, and models and to discontinue models or equipment. Due to continuous product development and other pre- and post-production factors, actual vehicle, materials and specifications may vary from this brochure. Some vehicles shown with optional equipment. See the actual vehicle for complete accuracy. Availability and delivery times for particular models or equipment may vary. Specifications, options and accessories may differ in Hawaii, U.S. territories and other countries. For additional information on availability, options or accessories, see your Nissan dealer or contact Nissan North America, Inc. At [NissanUSA.com](https://www.nissanusa.com), you'll find virtual product demonstrations, a way to "build your own Nissan," a dealer locator, and more information about key Nissan support services. Or if you'd prefer, call 1-800-NISSAN-3 for answers to specific questions about Sentra® or any other Nissan vehicle. The Nissan names, logos, product names, feature names, and slogans are trademarks owned by or licensed to Nissan Motor Co. Ltd. and/or its North American subsidiaries. Other trademarks and trade names are those of their respective owners. **Always wear your seat belt, and please drive responsibly.** ©2024 Nissan North America, Inc.

²⁵ Sentra® 25122234-N-7/24-80K-KSL