

The all-new Kia K4.



Movement that inspires



Inspiration doesn't strike at rest. It's born in motion, with eyes wide open to new possibilities. Movement wakes us up and sparks unprecedented thinking. At Kia, this is what drives our relentless mission to keep pushing, innovating, and perfecting our vehicles to be more than just a means of transportation, but also a catalyst for inspiration. In this spirit, we created the all-new K4.



Kia's industry-leading limited warranty program¹

- 10-Year/100,000-Mile Limited Powertrain Warranty
- 5-Year/60,000-Mile Limited Basic Warranty
- 5-Year/100,000-Mile Limited Anti-Perforation Warranty
- 5-Year/60,000-Mile 24-Hour Roadside Assistance
- 10-Year/100,000-Mile Electric Vehicle (EV) System Warranty

¹ See inside back cover for endnote. Cover and back page: K4 GT-Line Turbo shown. Right page: EX shown.

All eyes on you.



The perfect balance of innovative engineering and bold design. Introducing the all-new Kia K4. Where sleek and sporty meet modern and futuristic. Style doesn't sacrifice comfort. And it's fun to sit behind the wheel. All adding up to a distinct driving experience that elevates the compact sedan in every way.



Excitement takes shape.



The bold, futuristic exterior of the K4 was designed to elicit awe and evoke admiration. Each of its distinct features fuses form with function. From its striking Star Map LED front and rear lights to its fastback roofline and wide stance, the K4 is bold from the outside in.

K4 GT-Line Turbo shown.





Style comes from within.

Room to roam

The K4's spacious cabin with class-leading 2nd-row legroom² means there's plenty of room for you and all of your passengers to sit back and enjoy the ride.

Take it all in

Whether it's the sun, moon, or stars, it's easy to look up and see what's out there with the K4's available wide power sunroof.

An aesthetic approach that's twice as nice

The K4 GT-Line's stunning two-tone interior design elevates the already eye-catching aesthetic and refines your overall driving experience.

Captivating interiors

Available acoustic windshield,* acoustic tires,* and quiet cabin construction help keep unwanted noises on the exterior, allowing for a pristine interior experience.

*Optional features available only on certain trims. See Features page for availability. ²See inside back cover for endnote. K4 GT-Line Turbo shown. Simulated screen shown. Images shown for illustration only.



Nearly 30"

Total Combined Panoramic Display^{3*}

Experience a streamlined premium and intuitive cockpit. With available Wide Panoramic Display^{3*} and 5-inch Climate Control Display.* All available in the K4 GT-Line.

*Optional features available only on certain trims. See Features page for availability. 3-9 See inside back cover for endnotes. K4 GT-Line Turbo shown. Simulated screen shown. Images shown for illustration only.

Thoughtfully designed to meet your every need

Mug or tumbler? Bottle or can? Whatever your cup of tea, the new K4 comes with rotational cup holders that hold more than ever before.

The perfect climate for relaxation

Available heated⁴ and ventilated front seating* allows you to fine-tune your temperature for maximized driver and passenger comfort.

360 degrees of insight

An available 360-degree Surround View Monitor^{5*} provides views of your vehicle from multiple angles, allowing you to be more aware of surroundings.

No cords, all connection

Standard wireless Apple CarPlay^{®6} and Android Auto^{™7} means you're finally free from all the tangled cords of the past when connecting your iPhone[®] and Android[™] devices. Available wireless charging^{8*} lets you effortlessly recharge your mobile devices while focusing on the adventure ahead.

Harman Kardon^{®9} premium audio system*

An available Harman Kardon^{®9} premium audio system provides an exceptional listening experience, with features including cutting-edge, digital-signal processing technology, a subwoofer, and rich, immersive surround sound.



Every drive
comes alive.

Unleashes
190
Horsepower*

Exceptional
195
lb.-ft. of Torque*

Impressive
8-speed
Transmission*



Experience performance worthy of an encore, with an available 1.6-liter Turbo engine delivering an impressive 190 horsepower.* Multi-link rear suspension.* And performance handling that doesn't just sound good in name, it feels good behind the wheel. All available in the K4 GT-Line.

*Optional features available only on certain trims. See Features page for availability. K4 GT-Line Turbo shown.

It can handle it.



Multi-link rear suspension*

Available sport-tuned multi-link rear suspension enhances the exhilaration of the K4's already impressive power, providing tighter turns, smoother straights, and an unbridled connection to every environment.

Available 18-inch wheels and low-profile tires*

Available 18-inch wheels and low-profile grippy tires help establish a stronger bond between vehicle and driving surface, leading to better control and more precise handling. So you're prepared to take on the road ahead. And then some.

Enhanced driving comfort

From the second you sit down to the final mile of your drive, the K4 GT-Line Turbo puts you in a position of confidence and control with a turbocharged 1.6-liter engine paired to an 8-speed automatic transmission with paddle shifters³

K4 GT-Line Turbo shown.

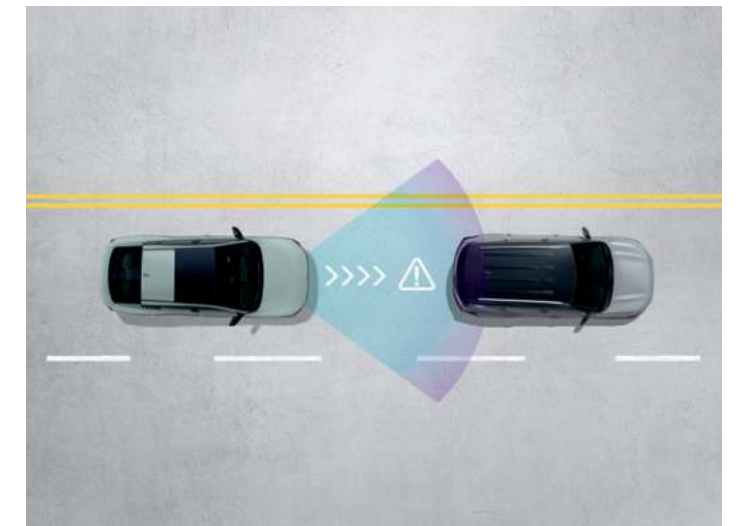
*Optional features available only on certain trims. See Features page for availability. ³ See inside back cover for endnote. Simulated screen shown. Images shown for illustration only.

Be more aware, everywhere.



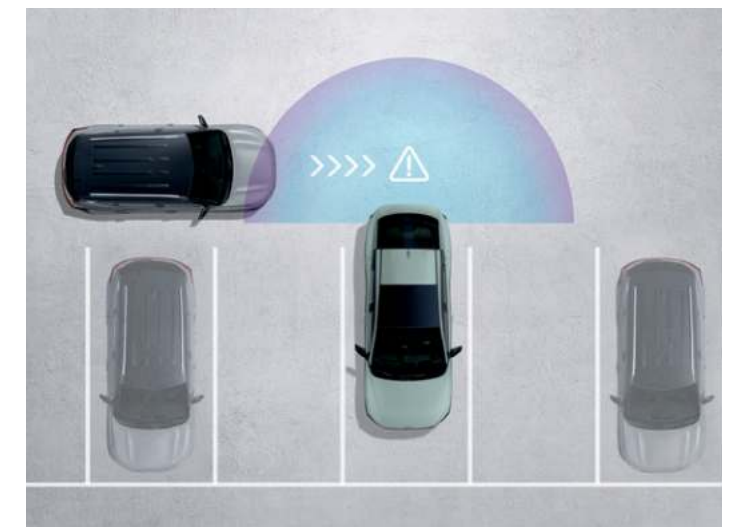
Advanced driver-assistance technologies^{5*}

The K4 has up to 29 collision-avoidance and assist features⁵ available. These driver-assistance technologies⁵ are designed to work in a variety of circumstances. Using cameras and sensors, they can help provide greater peace of mind amidst the challenges of everyday driving — along with convenience features such as an available Surround View Monitor,^{5*} which provides a bird's-eye view around the vehicle.



Forward Collision-Avoidance Assist features⁵

These standard technologies are designed to alert you, and automatically brake in certain circumstances, when the system detects a potential forward collision with a vehicle, pedestrian, or cyclist. It can also help react to oncoming vehicles when turning left at an intersection.



Available Rear Collision-Avoidance Assist features^{5*}

Available Rear Cross-Traffic Collision-Avoidance Assist^{5*} is designed to help alert you to detected oncoming obstacles while backing up and can automatically brake in certain circumstances. Additionally, available Parking Collision-Avoidance Assist — Reverse^{5*} helps prevent collisions with pedestrians or objects detected near you while you're in reverse at low speeds.

*Optional features available only on certain trims. See Features page for availability. ⁵ See inside back cover for endnote. K4 GT-Line Turbo shown. Simulated screen shown. Images shown for illustration only.



Heightened awareness for life's surprises.

Driver-assistance features

Whether it's slow-moving traffic, or on the open road, the K4's suite of assistive features⁵ can help you navigate what lies ahead.

Blind-Spot Collision-Avoidance features^{5*}

An available Blind-Spot View Monitor^{5*} displays a view of your vehicle's blind spot in the direction of your turn signal to help you when changing lanes. Available Blind-Spot Collision-Warning^{5*} and Blind-Spot Collision-Avoidance Assist^{5*} are designed to help alert and apply corrective steering in a variety of circumstances, to help prevent hazardous lane-change decisions.

Lane Assist features^{5*}

Lane Following Assist,⁵ Lane Keeping Assist,⁵ and available Lane Change — Oncoming^{5*} These are just some of the K4's steering-assistance technologies designed to help keep you centered within detected lane markers and to help avoid collisions with oncoming vehicles when changing lanes under certain conditions.

Automatic speed-adjusting technologies^{10,11*}

Available Highway Driving Assist 2^{10*} and Navigation-based Smart Cruise Control!¹¹ Designed to help maintain a set distance from the vehicle detected ahead, and can help adjust to upcoming curves detected on selected federal highways.

Trendsetting tech



Kia Connect¹²

Our available smart connectivity system integrates with certain compatible smart devices via the Kia Access app¹² and offers a range of exciting and ever-evolving features like remote start/stop, lock/unlock, and climate control^{13*}. Now available free for your first three years.

Available Digital Key 2.0^{13*}

This Ultra-wideband-capable virtual key lets you access and start your K4 from a compatible smartphone or smartwatch even while your device is still tucked away in your purse or pocket. Plus, effortlessly share your digital key capabilities with family or friends.

Display Themes^{14*}

Customize your infotainment experience with Display Themes (available from the Kia Connect Store) which feature personalized colors, graphics, and captivating animations that can elevate your vehicle's style.

Available Kia AI Assistant^{12*}

Use the new integrated Kia AI Assistant feature to pair your mobile device, turn on the climate-controlled seating,⁴ check the weather, or use navigation services through simple spoken commands.



 Go to owners.kia.com or download the Kia Access app to activate.



*Optional features available only on certain trims. See Features page for availability. 4, 12-14 See inside back cover for endnotes. K4 GT-Line Turbo shown.

Features

	LX	LXS	EX	GT-Line	GT-Line Turbo
Drivetrain					
2.0L Multi-Point Injection 4-cylinder engine	●	●	●	●	—
147 hp @ 6,200 RPM/132 lb.-ft. of torque @ 4,500 RPM	●	●	●	●	—
1.6L turbocharged, Direct Injection 4-cylinder engine	—	—	—	—	●
190 hp @ 6,000 RPM/195 lb.-ft. of torque @ 1,700 - 4,500 RPM	—	—	—	—	●
Intelligent Variable Transmission	●	●	●	●	—
8-speed Automatic Transmission	—	—	—	—	●
Drive Mode select w/Normal & Sport modes	—	●	●	●	●
MacPherson strut front suspension, coupled torsion-beam rear suspension	●	●	●	—	—
Sport-tuned MacPherson strut front suspension, multi-link rear suspension	—	—	—	●	●
Electronic Parking Brake w/Auto Hold	●	●	●	●	●

	LX	LXS	EX	GT-Line	GT-Line Turbo
Exterior					
Automatic LED headlights	●	●	●	●	—
Automatic projector LED headlamps	—	—	—	—	●
Amber LED Daytime Running Lights	●	●	●	●	●
High Beam Assist ¹⁵	●	●	●	●	●
Front LED fog lights	—	—	—	—	●
LED & bulb rear combination lamps	●	●	●	●	—
Full LED rear combination lamps	—	—	—	—	●
Unique GT-Line exterior styling including gloss black wheel arch moldings & bumper trim	—	—	—	●	●
Satin chrome & gloss black exterior window & mirror trim	—	—	—	●	●
Body-colored, heated & power-adjustable exterior mirrors	●	●	●	—	—
Gloss black, heated & power-adjustable exterior mirrors w/integrated LED turn signal	—	—	—	●	●
Wide-type power sunroof w/power sunshade	—	—	—	○	●
16-in. steel wheels w/cover w/205/55 R16 tires	●	—	—	—	—
16-in. dark gray alloy wheels w/205/55 R16 tires	—	●	—	—	—
17-in. black w/machined accents alloy wheels w/225/45 R17 tires	—	—	●	—	—
18-in. black w/machined accents alloy wheels w/235/40 R18 tires	—	—	—	●	—
18-in. black alloy wheels w/235/40 R18 tires	—	—	—	—	●
Trunk-mounted compact spare tire	●	●	●	●	●

	LX	LXS	EX	GT-Line	GT-Line Turbo
Interior					
Three-spoke sport steering wheel w/paddle shifters ³	—	—	—	●	●
SynTex-covered steering wheel & shift knob	—	—	●	●	●
Alloy sport pedals & footrest	—	—	—	—	●
Satin chrome door handles	—	—	●	●	●
Acoustic-laminated front windshield	—	—	—	○	●
Black cloth headliner	—	—	—	●	●
LED interior lighting	●	●	●	●	●
Customizable LED ambient lighting	—	—	—	—	○
Auto-up/down driver's window switch	●	●	—	—	—
Auto-up/down driver's & front passenger's window switch	—	—	●	●	●
Cloth seating material	●	●	—	—	—
Upgraded cloth seating material	—	—	●	—	—
Cloth & SynTex combination seating material	—	—	—	●	—
SynTex seating material	—	—	—	○	●
10-way power driver's seat w/lumbar adjustment	—	—	—	●	●
Heated front seats ⁴	—	—	—	●	●
Ventilated front seats	—	—	—	○	○
Integrated Memory System for the driver's seat & mirrors	—	—	—	○	○
TFT Supervision Instrument Display	4.2"	4.2"	12.3"	12.3"	12.3"
12.3-in. touch-screen audio display ³	●	●	●	●	●
4-speaker audio system	●	—	—	—	—
6-speaker audio system	—	●	●	—	—
6-speaker audio system w/Navigation ³	—	—	—	●	—
Harman Kardon® premium audio system w/8 speakers ⁹ & Navigation ³	—	—	—	○	●
Kia Connect ¹²	●	●	●	●	●
Kia AI Assistant ¹²	—	—	—	●	●
Wireless Apple CarPlay ^{®6} integration & Android Auto ^{™7} compatibility	●	●	●	●	●
5-in. digital climate control screen w/Dual Zone Automatic Climate Control	—	—	●	●	●
Smart Key w/Push Button Start	●	●	●	●	●
Digital Key 2.0 w/Ultra-wideband ¹³	—	—	—	—	○
Wireless smartphone charger ⁸	—	—	●	●	●
4 USB-C ports (2 front console, 2 rear console)	●	●	●	●	●
Rear passenger A/C vent	—	—	—	—	●
Split-folding rear seat	—	●	●	●	●

Features

	LX	LXS	EX	GT-Line	GT-Line Turbo
Advanced Driver-Assistance Technologies					
Forward Collision Warning ⁵	●	●	●	●	●
Forward Collision-Avoidance Assist w/Car/ Pedestrian/Cyclist Detection & Junction Turning Assist ⁵	●	●	●	●	●
Forward Collision-Avoidance Assist w/ Junction Crossing, Lane Change — Oncoming & Side, & Evasive Steering Assist ⁵	—	—	—	—	○
Blind-Spot Collision-Avoidance Warning, including Parallel Exit ⁵	—	●	●	●	●
Blind-Spot Collision-Avoidance Assist, including Parallel Exit ⁵	—	—	—	—	○
Blind-Spot View Monitor ⁵	—	—	—	—	○
Rear View Monitor ⁵	●	●	●	●	●
Surround View Monitor ⁵	—	—	—	—	○
Parking Distance Warning (Front/Rear/Side) ⁵	—	—	—	—	○
Parking Collision-Avoidance Assist — Rear ⁵	—	—	—	—	○
Rear Cross-Traffic Collision-Avoidance Assist ⁵	—	●	●	●	●
Smart Cruise Control w/Stop & Go ¹¹	●	●	●	—	—
Navigation-based Smart Cruise Control w/Stop & Go — Curve ¹¹	—	—	—	●	●
Highway Driving Assist ¹⁰	—	—	—	●	●
Highway Driving Assist 2 w/Lane Change Assist ¹⁰	—	—	—	—	○
Lane Keeping Assist ⁵	●	●	●	●	●
Lane Following Assist ⁵	●	●	●	●	●
Driver Attention Warning w/Leading Vehicle Departure Alert ¹⁶	●	●	●	●	●
Safe Exit Warning ¹⁷	—	●	●	●	●

Specifications

	LX	LXS	EX	GT-Line	GT-Line Turbo
Capacities/measurements					
Length (in.)				185.4	
Width (in.)				72.8	
Height (in.)				55.9	
Wheelbase (in.)				107.1	
Coefficient of drag (Cd)			0.27		0.29
Headroom, front (w/o sunroof) (in.)			39.0		—
Headroom, front (w/sunroof) (in.)			—		37.1
Headroom, rear (w/o sunroof) (in.)			37.3		—
Headroom, rear (w/sunroof) (in.)			—		37.0
Legroom, front (in.)			42.3		
Legroom, rear (in.)			38.0		
Shoulder room, front (in.)			56.5		
Shoulder room, rear (in.)			54.7		
Passenger volume (w/o sunroof) (cu. ft.)			98.7		—
Passenger volume (w/sunroof) (cu. ft.)			—		95.8
Trunk capacity (cu. ft.)			14.6		

	LX	LXS	EX	GT-Line	GT-Line Turbo
Safety					
Dual front advanced airbags ¹⁸	●	●	●	●	●
Dual front side airbags ¹⁸	●	●	●	●	●
Dual rear side airbags ¹⁸	●	●	●	●	●
Full-length side curtain airbags ¹⁸	●	●	●	●	●
Anti-lock Braking System (ABS), 4-wheel disc brakes ¹⁸	●	●	●	●	●
Vehicle Stability Management ¹⁸	●	●	●	●	●
Electronic Stability Control ¹⁸	●	●	●	●	●
Hill-start Assist Control ¹⁸	●	●	●	●	●
Lower Anchors and Tethers for Children (LATCH)	●	●	●	●	●
Front & rear outboard seat-belt pretensioners ¹⁸	●	●	●	●	●
Tire Pressure Monitoring System ¹⁹	●	●	●	●	●
Rear child-safety door locks ¹⁸	●	●	●	●	●

	LX	LXS	EX	GT-Line	GT-Line Turbo
Weight					
Min. curb weight (lbs.)	2,932	2,932	2,987	3,080	3,265
GVWR (lbs.)	3,924	3,924	3,924	4,101	4,189

	LX	LXS	EX	GT-Line	GT-Line Turbo
Fuel Economy²⁰					
City ²⁰	30	29	29	29	
Highway ²⁰	40	39	39	39	
Combined ²⁰	34	33	33	33	
Fuel tank capacity (gal.)	12.4	12.4	12.4	12.4	12.4

Packages/Options

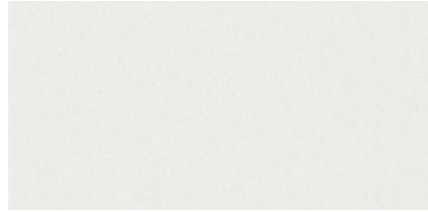
Sunroof Package (GT-Line):
Wide-type power sunroof w/power sunshade

Premium Package (GT-Line; requires Sunroof Package):
SynTex (black/off-white) seating material, ventilated front seats, Integrated Memory System for the driver's seat & mirrors, Harman Kardon® premium audio system w/8 speakers⁹ acoustic-laminated front windshield

Red Interior Package (GT-Line, GT-Line Turbo; GT-Line requires Premium Package) available with select exterior colors:
Black/red SynTex seating material, steering wheel & trim

Technology Package (GT-Line Turbo):
Surround View Monitor⁵ Blind-Spot View Monitor⁵ ventilated front seats, Integrated Memory System for the driver's seat & mirrors, Digital Key 2.0 w/ Ultra-wideband¹³ customizable LED ambient lighting, Forward Collision-Avoidance Assist w/Junction Crossing⁵ Lane Change — Oncoming & Side, & Evasive Steering Assist⁵ Highway Driving Assist 2 w/Lane Change Assist¹⁰ Blind-Spot Collision-Avoidance Assist, including Parallel Exit⁵ Parking Distance Warning (Front/Rear/Side)⁵ Parking Collision-Avoidance Assist — Rear⁵

Exterior colors



Snow White Pearl
Available on all trims



Steel Gray
Available on LXS, EX, GT-Line



Aurora Black Pearl
Available on all trims



Currant Red
Available on LXS, EX, GT-Line



Deep Sea Blue
Available on LXS, EX



Wave Blue
Available on GT-Line



Morning Haze
Available on LXS, EX, GT-Line

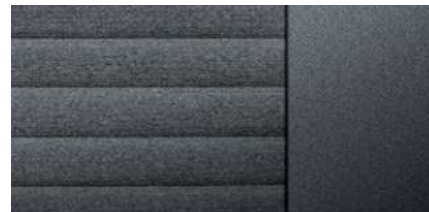


Interstellar Gray
Available on all trims

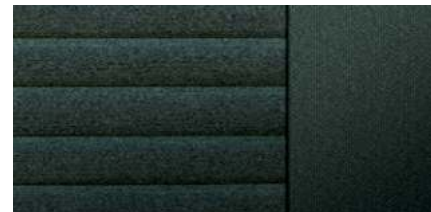
Interior colors



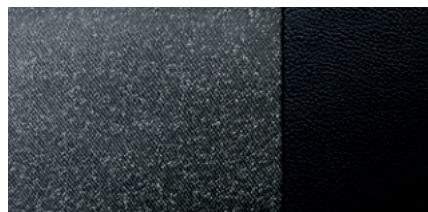
Medium Gray Tricot Cloth
Available on LX, LXS



Medium Gray Embossed Tricot Cloth
Available on EX



Slate Green Embossed Tricot Cloth
Available on EX



Onyx Black & Off-White Cloth & SynTex
Available on GT-Line



Onyx Black & Off-White SynTex
Available on GT-Line Premium/Turbo



Onyx Black & Red SynTex
Available on GT-Line Premium/Turbo

Endnotes

1. Kia's New Vehicle Limited Warranty includes a 10-year/100,000-mile powertrain limited warranty and a 5-year/60,000-mile basic limited warranty. All warranties and roadside assistance are limited. See your Warranty and Consumer Information Manual or your Kia retailer for warranty details. 2. Comparison based on publicly available data regarding rear legroom in 2024 Compact cars as of June 2024. Compact car class as defined by Kia segmentation. 3. Distracted driving can result in a loss of vehicle control. When operating a vehicle, never use a handheld device or vehicle system that takes your focus away from safe vehicle operation. Navigation is for information purposes only, and Kia does not make warranties about the accuracy of information. 4. Use extreme caution when using the seat warmers to avoid burns. Refer to the Owner's Manual for more safety information. 5. These features are not substitutes for safe driving and may not detect all objects surrounding vehicle. Always drive safely and use caution. 6. Apple CarPlay®, Siri®, and iPhone® are registered trademarks of Apple Inc. 7. Vehicle user interface is a product of Google and its terms and privacy statement apply. Compatible Android phone and compatible active data plan required. Data plan rates apply. Android, Google Play, and YouTube are trademarks of Google LLC. 8. Qi-enabled smartphone required. 9. Harman Kardon® and Clari-Fi™ are registered trademarks of Harman International Industries, Incorporated. 10. Highway Driving Assist and Highway Driving Assist2 only function on certain federal highways. When engaged, Highway Driving Assist and Highway Driving Assist 2 are not substitutes for safe driving and may not detect all objects around the vehicle. Always drive safely and use caution. 11. When engaged, Smart Cruise Control and Navigation-based Smart Cruise Control are not substitutes for safe driving and cruise-control procedures. This is not an auto-pilot feature. It may not detect every object around the vehicle. Always drive safely and use caution. 12. Purchase/lease of certain 2025 and newer Kia vehicles with Kia Connect includes a complimentary 3-year subscription to the Kia Connect Ultimate package, starting from new vehicle retail sale/lease date as recorded by the dealer. After your complimentary 3-year Kia Connect subscription expires, continued access to the full suite of Kia Connect services available on your Kia will require a paid subscription at the then-current subscription rate or your use of certain Kia Connect features may immediately terminate. Use of Kia Connect is subject to agreement to the Kia Connect Privacy Policy (available at owners.kia.com/us/en/privacy-policy.html) and Terms of Service (available at owners.kia.com/us/en/terms-of-service.html). Kia Connect is transferable to subsequent owner during the original Kia Connect service term. Only use Kia Connect when safe to do so. Kia Access app is available from the Apple App Store or Google Play. Kia America, Inc. reserves the right to change or discontinue Kia Connect at any time without prior notification or incurring any future obligation. Message and data rates may apply. Cellular and GPS coverage are required to use most features. Kia Connect features may vary by model, model year, and trim level. Features, specifications, and fees are subject to change. Kia Connect may be currently unavailable for model year 2022 and newer vehicles sold in Massachusetts; please see www.owners.kia.com for updates on availability. For more on details and limitations, visit kia.com or your authorized Kia dealer. Apple and App Store are trademarks of Apple Inc. 13. Remote features require a Kia Connect subscription, a compatible smartphone, and a wireless signal with good coverage to function. Normal cellular service rates may apply. Do not use remote climate control if vehicle is in an enclosed area (e.g., closed garage) or a partially enclosed area without ventilation. Close all doors leading from adjacent living areas to the vehicle area before executing a remote climate control command. If any door or hatch is not closed properly, the remote lock and unlock functions will not work. 14. Display Themes availability and features may vary by model, model year, and trim level. An active Kia Connect subscription is required to utilize Display Themes. Without an active Kia Connect subscription, Display Themes will not be operational. 15. High Beam Assist does not operate below certain speeds, or in some lighting and driving conditions. Please be aware of your surroundings and exercise proper road etiquette when operating a vehicle using the high beams. 16. When engaged, Driver Attention Warning is not a substitute for safe driving and may not detect all instances of inattentive driving practices. Failure to pay attention to travel conditions and vehicle operation could result in loss of vehicle control. Always drive safely and use caution. 17. When engaged, Safe Exit Warning is not a substitute for one's attention and may not detect all objects surrounding the vehicle. Always pay attention to traffic and to the area around your vehicle when exiting the vehicle. 18. For maximum protection, always wear your seat belt. No system, no matter how advanced, can compensate for all driver errors, driving conditions, and/or injury. 19. Even with the Tire Pressure Monitoring System, always check your tire pressure on a regular basis with a digital tire gauge. 20. Based on EPA estimates. Actual mileage will vary with options, driving conditions, driving habits, and your vehicle's condition. For more information, please see www.fueleconomy.gov.

Kia America, Inc. P.O. Box 52410 Irvine, CA 92619-2410 1-800-333-4KIA

The content in this brochure is based upon information available at the time of printing and is subject to change without notice. Kia America, Inc. makes no guarantees or warranties, either expressed or implied, with respect to the accuracy of the content presented. Please see kia.com for the most up-to-date vehicle information. Vehicles shown include optional equipment, and video and camera screens are simulated. See your Kia retailer or kia.com for details on Kia's available limited warranties. ©2024 Kia America, Inc. Reproductions of this material are prohibited without the expressed written approval of Kia America, Inc.



kia.com



facebook.com/kia



www.instagram.com/kiausa



X.com/kia



youtube.com/kia



Scan here to learn more
about the all-new K4



KIA
Movement that inspires