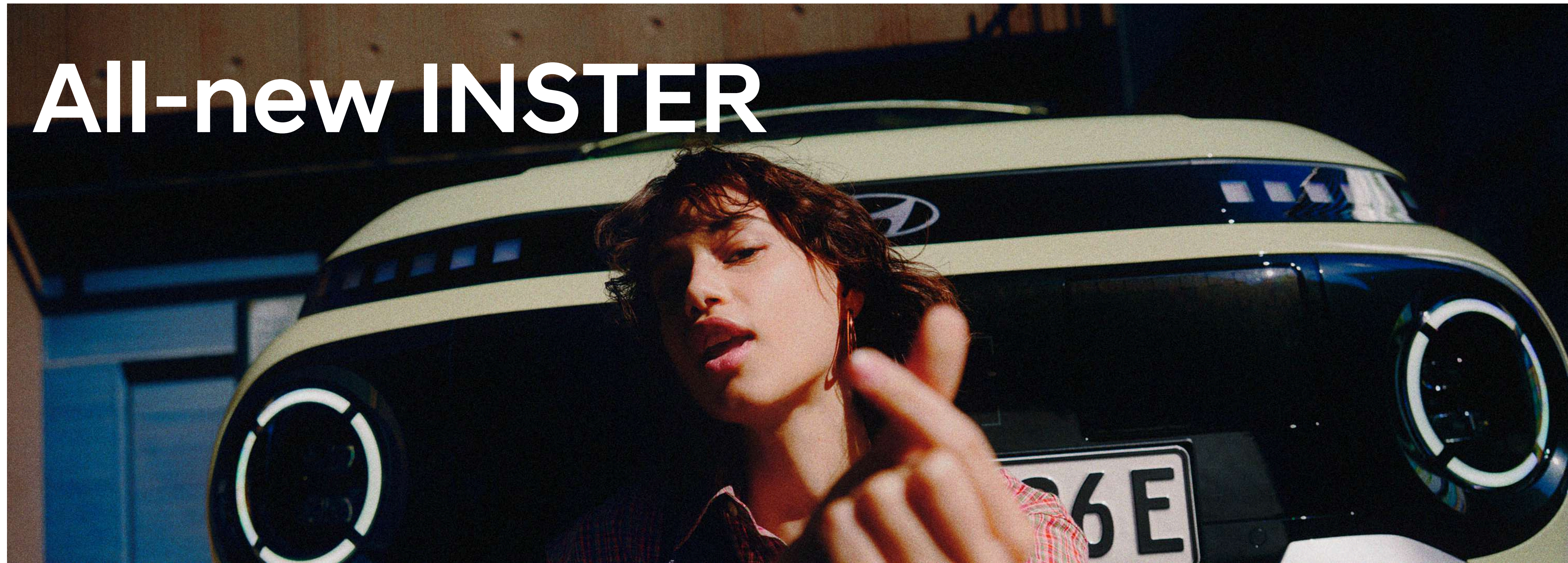


All-new INSTER



Good things come in small packages.

Introducing the all-new Hyundai INSTER, the smallest member of the Hyundai electric vehicle family. Compact yet versatile, this robust electric car aims to challenge what you might expect from a small electric vehicle.





Concept car design brought to life.

All-new INSTER catches the eye with its bold wheel arches, flush, clean surfaces and strong SUV styling. Circuit board-style bumpers and bold skid plates make a strong statement in the front and rear.

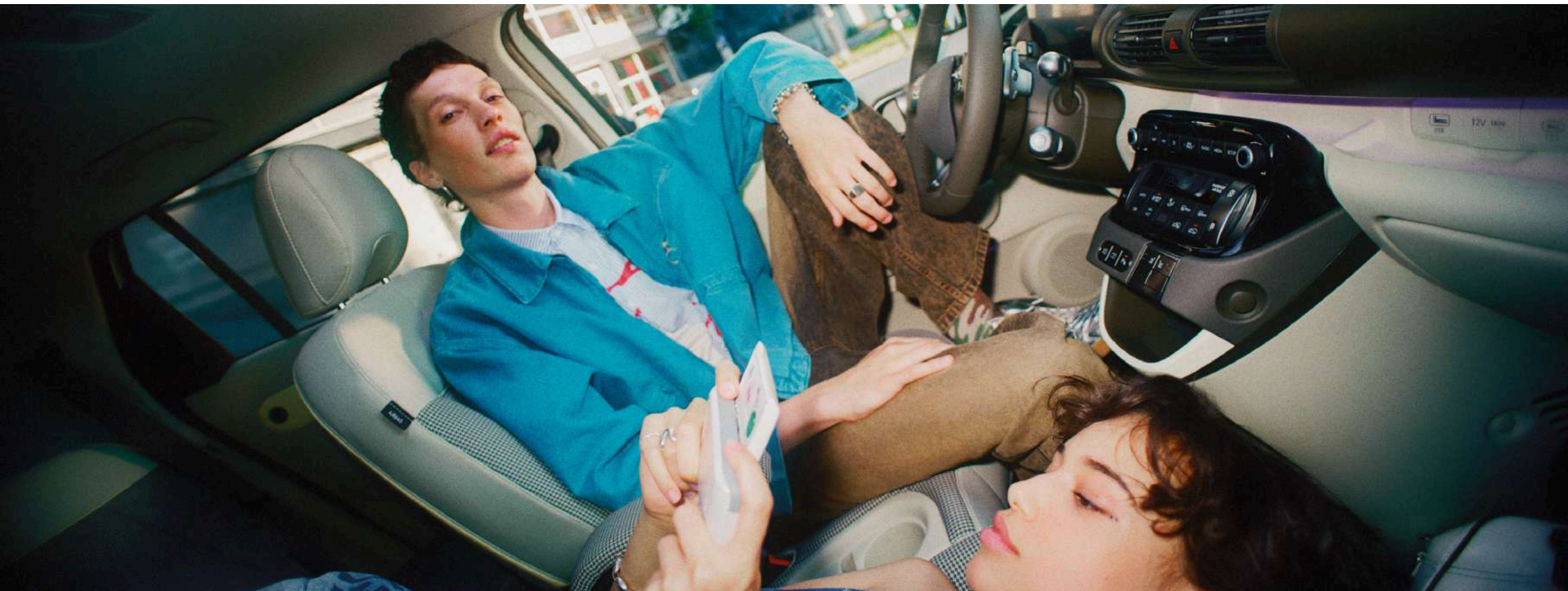
All-new INSTER's personality is in its signature LED daytime running lights, pixel-graphic turn signals, and tail lamps a design element shared with other members of the Hyundai electric vehicle family.





Enjoy plenty of highly versatile flexibility.

All-new INSTER's interior offers plenty of versatility and spaciousness, with the front row seating providing walk-through access. All seats can be folded flat – including the driver's seat – for maximum flexibility. The second row seats are split 50/50 and can slide and recline. A front bench seat option and heated front seats and steering wheel are also available.



Feature highlights.

All-new INSTER is positioned between traditional A-segment city cars and larger B-segment models, offering the manoeuvrability and elevated seating position of a small SUV, along with improved practicality and flexibility due to its more spacious interior and increased cargo capacity.



Flexible and generous boot space.

The rear seats can slide backwards and forward by 16 cm, expanding your boot space from 238-351 litres. Fold the seats flat to expand the cargo capacity to 1,059 litres.



10.25" digital cluster & infotainment touchscreen.

In its sleek cockpit, INSTER provides enhanced technology and convenience with a brilliant 10.25" digital cluster and a 10.25" infotainment touchscreen with navigation.



Wireless charging in the compact centre console.

The wireless charging dock is built into the compact center console, which is designed to enhance the feeling of spaciousness.



Slidable rear seats for more flexibility.

Slide the rear seats forward to increase cargo space in the boot - or slide them back for more leg room.

Features are specific to trim specification.



Distinctive and iconic.



The Front.

Front bumper design featuring a trapezoidal semi-gloss silver garnish intake grille for a more luxurious and stable appearance. Highlighting the Hyundai EV's character and iconic look through its round headlamp design with clear lenses and pixel graphic LED turn signals.



The Side.

Extended wheelbase & pixel inspired 4-spoke 17" alloy wheels exude a clean and unique side image.



The Rear.

Creating a forward-looking and iconic rear image with bold skid plates and rear lamps harmonize with the front.

All-new INSTER Colours.

Choose from an IN-teresting range of exterior colours to create an all-new INSTER that is best matched to your personal style.



Natural Ivory
(Metallic)



Buttercream Yellow
(Pearl)



Bijarim Khaki
(Matte)



Dusk Blue
(Matte)



Abyss Black
(Pearl)



Sienna Orange
(Metallic)*



Atlas White
(Pearl)*



Aero Silver
(Matte)*



Jungle Khaki
(Gloss)*

Alloy wheels.



15" Alloy

17" Alloy

The all-new INSTER is available with either 15" or 17" alloy wheels depending on trim selection. They have been aero-optimised to the further echo the design theme, exuding an exclusive electric flair, harmonising beautifully with the sleek profile.

Natural Ivory is a no cost-option, all other colours are optional extra. *Available with Two Tone Roof as an additional cost option on O2 trims.

Be one of the first to experience the all-new INSTER.

Come and see our all-new INSTER ahead of official launch at one of our national roadshow events happening this autumn. Are you in?

October - December

[Book now](#)



5 YEAR
Unlimited
Mileage Warranty

8 YEAR
100,000 Mile
Battery Warranty

The Hyundai 5-Year Unlimited Mileage Warranty applies only to Hyundai vehicles that have been originally sold by an authorised Hyundai retailer to an end-customer, as set out in the terms and conditions of the warranty booklet. 8 years or 100,000 miles warranty on vehicle battery unit. Local terms and conditions apply. Contact your official Hyundai dealer for further information.

All the information contained in this brochure is provisional and subject to change without notice and is intended only as preliminary notification. Possible variations in the representation of vehicle colours are due to the limitations of printing technology. The products shown correspond to the offer and the range of equipment for European markets. The vehicles shown in this brochure may be equipped with additional equipment at extra cost, and not all model versions are included in this brochure. Hyundai Motor Europe reserves the right to make changes to technical specifications and equipment content without notice. Please consult your Hyundai retailer for exact details.

Details within this brochure are subject to change.

Hyundai Motor UK Ltd
Ground Floor, Birchwood Building
Springfield Drive
Leatherhead KT22 7LP
T: 0800 981 981
www.hyundai.co.uk

10/2024

