



By appointment  
to HM The Queen  
motor car manufacturers  
Bentley Motors Limited  
Crewe, Cheshire



By appointment  
to HRH The Prince of Wales  
motor car manufacturers  
Bentley Motors Limited  
Crewe, Cheshire



BENTLEY

New Flying Spur



Flying Spur Mulliner (hybrid) WLTP drive cycle: fuel consumption, mpg (l/100km) – Combined with discharged battery 26.4 (10.7). Combined electrical consumption – 29.3 (kWh/100km).  
Combined CO<sub>2</sub> emissions – 33 g/km. CO<sub>2</sub> class weighted combined – B. CO<sub>2</sub> class with discharged battery – G.



# Flying Spur: Contents

## The Flying Spur 03

- The Flying Spur 04
- Two models to choose from 05
- Flying Spur Speed 06
- Flying Spur Mulliner 07

## Design 08

- A sense of power 09
- Exquisite details 10
- Design: Flying Spur Speed 11
- Design: Flying Spur Mulliner 12

## Performance 13

- Looks can be deceiving 14
- The V8 hybrid powertrain 15
- Advanced chassis systems 16
- New suspension system 17
- Drive electric 18
- Choose your mode 19

## Interior 20

- A supreme space 21
- Obsessive attention to detail 22
- A new standard for comfort 23
- A breath of fresh air 24
- Digital details 25
- Interior: Flying Spur Speed 26
- Interior: Flying Spur Mulliner 27

## Technology 28

- Intuitive technology 29
- Effortless manoeuvres 30
- Embrace the open road 31
- Connect to more 32
- Wireless by design 33
- Incredible audio systems 34
- The Bentley Rotating Display 35
- Charging and driving your car 38

## Personalisation 39

- Express yourself 40
- Exterior colours 41
- Wheels 42
- Veneers 44
- Hide colours 47
- Specification packages 49
- Luggage set 50
- Bespoke commissioning with Mulliner 51
- The Bentley Configurator 52
- Accessories, servicing and maintenance 53
- Financing your Flying Spur 54
- Arranging a test drive 55

### Legend (for above icons)



BentleyMotors.com



Configure your Bentley



Find a Retailer



Request test drive

## World of Bentley 56

- The Bentley Collection 57
- The Bentley Experience 58
- Extraordinary Journeys 59

## Specifications + Options 60

- Flying Spur Speed 61
- Flying Spur Mulliner 63
- V8 hybrid powertrain 65
- Tyre applicability 66



# THE FLYING SPUR



## The Flying Spur

The new Flying Spur is the most finely crafted luxury sedan in the world. Yet in many ways, it is a car that defies categorisation. Because it is a powerful, spacious vehicle with remarkable agility. A grand design with a wealth of intricate details. A meeting of innovative technology and timeless style.

Available in your choice of two stunning new models, the Flying Spur Speed and the Flying Spur Mulliner, it is a car built both for those who love to drive and those who delight in being driven. It is an inspiring luxury four-door car, yet it delivers all the exhilarating performance of a grand tourer. Consider it the best of all worlds.

Flying Spur Speed (hybrid) WLTP drive cycle: fuel consumption, mpg (l/100km) – Combined with discharged battery 26.4 (10.7). Combined electrical consumption – 29.3 (kWh/100km). Combined CO<sub>2</sub> emissions – 33 g/km. CO<sub>2</sub> class weighted combined – B. CO<sub>2</sub> class with discharged battery – G.



## Two exquisite models

The new Flying Spur is available in two truly remarkable models, both featuring the same all-new V8 hybrid powertrain. The Flying Spur Speed combines phenomenal performance with unmatched sporting luxury, while the Flying Spur Mulliner represents the pinnacle of Bentley craftsmanship.



### Flying Spur Speed

With sleek sporting style and a phenomenal V8 hybrid powertrain, this is the ultimate in four-door exhilaration.

V8 hybrid.

DISCOVER



### Flying Spur Mulliner

Unprecedented power and unrivalled craftsmanship come together in a car that sets a new standard for the luxury sedan.

V8 hybrid.

DISCOVER



## Flying Spur Speed

The Flying Spur Speed pushes four-door performance to the limit, combining unrivalled power with supreme sporting style. With a 4.0 litre V8 hybrid powertrain, it offers a truly exhilarating drive.

Active all-wheel drive comes together with all-wheel steering and the Bentley Dynamic Ride anti-roll system to deliver a drive unlike that of any comparable car. And the power it puts at your disposal is astonishing: 771 bhp (782 PS) and 738 lb ft (1,000 Nm) of torque. That's enough to surge from zero to 60 mph in 3.3 seconds (0 to 100 km/h in 3.5 seconds) – performance previously unheard of for a luxury sedan.

Motorsport-inspired finishes are used inside and out, from its dark tint brightware and exclusive matrix grille to the 3D leather door panels and exclusive quilting inside. It might just be the most thrilling Flying Spur ever created.

TO DESIGN

Please refer to Specifications and Options pages for standard and optional features. Not all options are available on all models and within all markets.





## Flying Spur Mulliner

The Flying Spur Mulliner represents the pinnacle of craftsmanship and refinement, whether you prefer to drive or be driven.

Powered by the same V8 hybrid powertrain as the Flying Spur Speed, it is capable of the same incredible performance – yet its styling could not be more different.

Exquisite craftsmanship is on display everywhere you look, from the floating-diamond Mulliner grille to the self-levelling Bentley badges at the centre of the 22" Mulliner wheels. Illuminated Mulliner treadplates and animated welcome lamps invite you inside, where you can enjoy your choice of eight exclusive hide colourways, plus a new Mulliner quilting pattern and stunning details such as 3D leather door panels.

This is a car for those who demand the best of everything – whether they sit behind the driver or behind the wheel.

TO DESIGN

Please refer to Specifications and Options pages for standard and optional features. Not all options are available on all models and within all markets.



# DESIGN



## A sense of power

Nobody expects a luxury sedan to perform like the new Flying Spur. But look closely at its sleek design and you may notice some subtle hints. The sweeping roofline gives an immediate impression of speed, as does the power line that flows from the headlamps and runs along the car's profile, while body-coloured lower sills make the car look even closer to the road.

Please refer to Specifications and Options pages for standard and optional features. Not all options are available on all models and within all markets.



## Exquisite details

At the front, a new lower aperture houses intricately designed new grilles, while the main radiator grille features exclusive new designs that reflect the character of your chosen model.

A bonnet strip – finished in bright chrome on the Mulliner model and dark tint on the Speed – leads to a feature originally seen on the Flying Spurs of the 1950s. Standard on the Mulliner and available as an option on the Speed, the Flying 'B' bonnet mascot is a stunning symbol of Bentley power and grace. Available in a choice of chrome or black gloss, it emerges when you unlock the car, its wings' illuminating in time with a welcoming glow from the headlamps.

At the rear, a sleek new diffuser is accompanied by tail lamps inspired by the shape of the Bentley B – ensuring the new Flying Spur leaves a lasting impression.

Please refer to Specifications and Options pages for standard and optional features. Not all options are available on all models and within all markets.

## Design: Flying Spur Speed

From the moment you set eyes on the Flying Spur Speed, its character is clear. Elegant and spacious it may be, but it conceals a dark secret: the power to exhilarate anyone who sits behind the wheel.

A dark tint has been applied to its exclusive Speed matrix grille, the lower bumper apertures, the front and rear lights and the remaining exterior brightware, for a more purposeful finish than traditional bright chrome. There is Speed badging and new body-coloured sills, while exclusive 22" Speed wheels complete the picture.

[TO INTERIOR](#)

Please refer to Specifications and Options pages for standard and optional features. Not all options are available on all models and within all markets.



## Design: Flying Spur Mulliner

The first thing you notice on the new Flying Spur Mulliner may well be its beautiful floating-diamond matrix grille – just part of a suite of sparkling chrome exterior brightware. The exclusive, grey-painted and polished 22" wheels feature self-levelling Bentley 'B' centre wheel badges, while double-diamond wing vents and Satin Silver painted mirror caps draw your gaze in even further.

When you unlock the car, the Flying 'B' bonnet mascot deploys electrically, its wings lighting up to lead the way. And the moment you open the door, the Animated Welcome Lamps by Mulliner project a swirling light show onto the ground, culminating with the Bentley 'wings' emblem.

[TO INTERIOR](#)

Please refer to Specifications and Options pages for standard and optional features. Not all options are available on all models and within all markets.



# PERFORMANCE

## Looks can be deceiving

No other luxury sedan combines such incredible craftsmanship with such irresistible power. The phenomenal performance of the new Flying Spur – driven by an entirely new hybrid powertrain – is the result of a hundred-year journey to create a vehicle described by W.O. Bentley himself as “a fast car, a good car, the best in its class”.

Please refer to Specifications and Options pages for standard and optional features. Not all options are available on all models and within all markets.



## The V8 hybrid powertrain

Combining an all-new turbocharged 4.0 litre V8 petrol engine with a powerful electric motor, this car delivers truly revolutionary performance.

The instant response of the electric motor provides a surge of instantaneous torque, for incredible acceleration, even from a standing start. No lag, no delay – just pure propulsion. This allows the petrol engine to be tuned for maximum performance at higher revs, with the combined system delivering 800 Nm of torque at just 1,000 rpm, ultimately rising to a full 1,000 Nm, for incredible power and performance.

Switch to Sport mode and the effect is at its most pronounced: the car can take you right up to 60 mph in just 3.3 seconds (100 km/h in 3.5 seconds) and on to a top speed of 177 mph (285 km/h).

Figures shown are subject to final certification.

0 to 60 mph  
**3.3** seconds  
(0 to 100 km/h: 3.5 seconds)

Top Speed  
**177** mph  
(285 km/h)

Power  
**771** bhp  
(782 PS)

Torque  
**1000** Nm  
(738 lb ft)



## Advanced chassis systems

The new Flying Spur features Bentley Dynamic Ride, an innovative 48-volt active roll control system that continuously adjusts the anti-roll bars to reduce body movement especially when cornering.

Torque vectoring, delivered via an electronic limited-slip differential, contributes further to the cornering experience, by slowing the wheels on the inside of a turn and increasing the speed of those on the outside. This enables the car to hold the road more tightly when cornering hard, for a truly thrilling drive.

All-wheel steering is another key feature. At low speeds, it shrinks the car's turning circle, for increased manoeuvrability in tight spaces. But when driving faster, it steers the rear wheels in the same direction as the front wheels, allowing for smoother lane changes and overtaking.

Please refer to Specifications and Options pages for standard and optional features.  
Not all options are available on all models and within all markets.





## New suspension system

The new Flying Spur features truly incredible handling, in part due to the inclusion of new twin-valve dampers. They make the suspension system more flexible than ever before, allowing for a more refined ride in Comfort mode, for example – even when negotiating roads with potholes or other surface imperfections. Yet crucially, they also allow for greater control and stability in Sport mode – especially when cornering at speed.

Please refer to Specifications and Options pages for standard and optional features. Not all options are available on all models and within all markets.

## Drive electric

To drive with no emissions whatsoever, you can make use of the new Flying Spur's ability to drive in electric-only mode. This means the V8 petrol engine is completely turned off and the car relies entirely on its powerful electric motor for propulsion, providing up to 190 PS of power and 450 Nm of torque – more than enough power for both urban and highway driving. Range in this mode is a full 50 miles (80 km) – and emissions, as you might imagine, are zero.



### Choose your mode

Like every Bentley, the new Flying Spur gives you access to four different driving modes – Comfort, Bentley, Custom and Sport – each of which can be selected using the Drive Dynamics Control.

While Comfort mode prioritises a smooth ride, the specially calibrated Bentley mode delivers the perfect balance of luxury and exhilaration. Custom mode lets you make your own adjustments to the engine, transmission and suspension and in effect, create your own mode. Sport mode, meanwhile, makes the car noticeably more responsive, for maximum exhilaration.

# INTERIOR

## A supreme space

In the cabin of the new Flying Spur, space and light come together to enhance the comfort and wellbeing of every occupant. The wide centre console gives rear-seat passengers access to USB-C charging ports, with a wireless charging option available. It also houses the Touch Screen Remote, for access to many of the car's comfort and infotainment features, from seat massage to controls for the audio system.

Optional on the Speed model and standard on the Mulliner, a panoramic sunroof fills the cabin with natural light. All the colour-matched Dinamica blinds can be closed simultaneously, with a single tap on the Touchscreen Remote.

The four-seat configuration – standard in the Flying Spur Mulliner – offers two sculpted outboard rear seats, providing the same supreme comfort and support as the front seats, not to mention a more sports-inspired look. It also allows for a longer centre console to run between them, offering wireless phone charging, two USB-C sockets, a 12-volt socket, two cupholders and additional stowage space.

Please refer to Specifications and Options pages for standard and optional features. Not all options are available on all models and within all markets.



## Obsessive attention to detail

Wherever your gaze falls, there are stunning details to appreciate.

Jewel-like diamond knurling, for example, can be found on all rotary switches and indicator stalks. As an option, it can also be applied to the bullseye vents, the clock and the centre vent, where 5,331 individual diamond shapes are created using a bespoke software algorithm.

The new Dark Chrome Interior Specification allows you to specify a darker finish for much of the chrome interior detailing, from the steering wheel and gear lever to the door handles and speaker grilles. This option also changes the gloss black switchgear to matt black, for a sportier aesthetic, while also changing the centre console to satin black.

The Côtes de Genève finish, meanwhile, takes the form of sheet aluminium just 0.6 mm thick, machined at an angle to achieve a truly three-dimensional finish.

Please refer to Specifications and Options pages for standard and optional features. Not all options are available on all models and within all markets.

## A new standard for comfort

Installed as standard in every Flying Spur, the luxurious Front & Rear Comfort Specification offers a six-setting massage function in all four seats, alongside numerous options for adjustment of the headrests, cushions and backrest bolsters.

New Wellness Seating – installed as standard in the Mulliner model and available as an option for the Speed – includes two innovative features to maximise your comfort and wellbeing. Seat Auto Climate, which monitors the humidity and temperature at the surface of each front seat and uses a combination of heating and ventilation to respond automatically keeping you comfortable at all times. It also includes Postural Adjust, which uses a series of air cushions inside each front seat to vary the pressure on your muscles throughout your journey. Although the effect is imperceptible on the lowest settings, it reduces fatigue and stiffness significantly, especially when you are in the vehicle for a long time. As a result, you can get out of the car feeling comfortable, even after the longest of journeys.

Please refer to Specifications and Options pages for standard and optional features. Not all options are available on all models and within all markets.

MULLINER

MULLINER

## A breath of fresh air

A new air conditioning system improves cabin air quality and reduces the number of harmful PM2.5 particles to which you and your passengers might otherwise be exposed.

The new system monitors the atmosphere inside and outside the cabin, then filters out the pollutants. The interior and exterior readings can be seen on the 'Air Quality' panel on the central touchscreen. It also models CO<sub>2</sub> concentration. Provided levels are judged to be low outside the vehicle, clean fresh air is drawn in. If not, the air inside is recirculated instead.

The system can even use GPS data to detect tunnels in advance, switching to recirculation mode before you enter, to maximise air quality in the car. When you exit the tunnel, it switches back to drawing in air from outside. To save energy, it can even detect whether anyone is sitting in the rear seats. If not, performance in the back of the cabin is automatically reduced.

Please refer to Specifications and Options pages for standard and optional features. Not all options are available on all models and within all markets.

*Speed*





## Digital details.

The new digital driver's information panel behind the steering wheel can be displayed with a choice of different graphic design schemes to match your taste, with four different options on each model.

Please refer to Specifications and Options pages for standard and optional features. Not all options are available on all models and within all markets.



## Interior: Flying Spur Speed

Inside the Flying Spur Speed, sporting style is in evidence wherever you look, from the new, performance-themed graphics in the instrument panel, right down to the sports pedals at your feet.

The seats feature 'Speed' embroidery and a new, tactile quilting design, to complement the distinctive new 3D leather panels on the doors. The combination of leather and Dinamica is exclusive to the Speed model, while veneer options take in the full range of wood finishes, as well as more technical materials such as engine-turned aluminium or Côtes de Genève. You can opt for Dual Veneers by Mulliner, or Piano Black veneer with an optional colour-matched pinstripe. The optional Dark Chrome Interior Specification, meanwhile, renders many of the chrome elements in a darker tint.

SPECIFICATIONS AND OPTIONS

Please refer to Specifications and Options pages for standard and optional features. Not all options are available on all models and within all markets.

## Interior: Flying Spur Mulliner

As you step over the illuminated treadplates, you will be greeted by sumptuous Nappa leather in your choice of eight exclusive three-colour combinations, each featuring contrast and accent stitching. Sustainable olive tan leather has been used where appropriate, as well as tactile 3D leather on the doors. With a new Mulliner quilting pattern and 'Mulliner' seat emblems, the entire cabin is a showcase of interior craftsmanship.

A stunning Mulliner clock draws the eye, as do chrome air vents and overlays on the Grand Black fascia, waistrails and picnic tables. Even the instrument panel features new graphics, exclusive to the Mulliner model.

Piano veneers are now also available in other stunning colours. The fascia and centre console, meanwhile, can be treated with a choice of woods or technical finishes.

### SPECIFICATIONS AND OPTIONS

Please refer to Specifications and Options pages for standard and optional features. Not all options are available on all models and within all markets.

# TECHNOLOGY



## Intuitive technology

Every Flying Spur is equipped with the latest driver assistance technology, alongside a suite of Connected Car services, accessible both in-car and remotely, via the My Bentley app. The vehicle can harness infrastructure data to deliver services including real-time traffic information, green traffic light prediction and swarm services from other road users to warn you of potential hazards.

Inside, you can use the new My Bentley App Studio to download your personal choice of applications – which means you don't have to worry about your phone battery draining while you use it for music or navigation, for example. And if you do choose to use a third party navigation app, it will have access to your vehicle's fuel and/or charge levels, for more accurate journey planning.

You can even assign certain frequently-used functions – for example switching navigation announcements on or off – to a custom switch on the steering wheel, for easier access while driving.

Please refer to Specifications and Options pages for standard and optional features. Not all options are available on all models and within all markets.

## Effortless manoeuvres

A suite of driver assistance systems makes the Flying Spur easier to drive than ever – especially when parking and manoeuvring at low speeds.

### Parking made even easier

The new Intelligent Park Assist\* function can identify a suitable parking space, then take control of the steering, pedals and gears while it parks your car. And for occasions when the space is so tight that it would be hard to get in or out of the vehicle once parked, you can use My Bentley Remote Park Assist\*, a feature accessed via the My Bentley smartphone app. Simply step out of the car before it parks and tap the button in the app that activates remote parking. Then hold the button down until your car has safely parked itself. Your car will stop moving straight away if you stop holding the button for any

reason. When you return to your car, you can also use Remote Park Assist\* to drive it out of the parking space, so you can comfortably get back in.

### Assistance when you need it most

When manoeuvring in extremely tight spots or crowded locations, new 3D Surround View allows you to choose the best view available from the four different cameras on the car or, alternatively, see a 3D view of the overall environment around the vehicle.

Manoeuvre Assist provides an extra layer of safety for you and your car, by monitoring the environment in hard-to-navigate spaces and braking automatically if your car looks likely to collide with anything.

\*The driver must constantly supervise the manoeuvre and be able to intervene at any time to maintain safety.  
Please refer to Specifications and Options pages for standard and optional features.  
Not all options are available on all models and within all markets



## Embrace the open road

Every Flying Spur is equipped with a number of new driving assistance features that make driving long distances more comfortable, such as Adaptive Cruise Control, Lane Departure Warning and matrix headlamps with High Beam Assist. The Touring Specification provides even more intuitive assistance for long-distance touring.

### More comfortable cruising

The specification includes Adaptive Cruise Assist Plus with Lane Guidance, which enables you to take your feet off the pedals when driving on the highway. As long as you keep your hands on the wheel, it will ensure you stay in the centre of your lane and maintain a safe gap between your car and the car in front – even if traffic slows to a stop and starts again.

### Going beyond the highway

Predictive Adaptive Cruise Assist takes these functions further, by offering the same convenience when you leave the highway. Using data from the

navigation system, it can continue to safely control your speed, accelerating or braking as necessary to account for speed limit changes, bends in the road, junctions and roundabouts.

### Safer driving at night

The night vision camera makes driving in darkness safer – especially in situations where obstacles could be present outside or beyond the headlamp beams. The view from the camera is shown on the driver's information display, highlighting the presence of people or animals in your car's path.

### Key information at eye-level

The Touring Specification also includes a Head-Up Display, which projects key driving information into your line of sight, so you never need to take your eyes away from the road.

Please refer to Specifications and Options pages for standard and optional features. Not all options are available on all models and within all markets.

## Connect to more

The Flying Spur is equipped with a wide range of Connected Car services\*, accessed in-car or remotely via the My Bentley app.

### Seamless integration

You can input a destination into the navigation system via the My Bentley smartphone app when you're away from your car, so you're ready to go the moment you get behind the wheel. Real-time traffic information can then dynamically re-route your journey if there is congestion, while Green Traffic Light Prediction will aid smooth passage through junctions.

### Your choice of apps

With the new My Bentley App Studio, you can opt to download and use many third party apps for navigation, music, video and more, all within the Bentley infotainment system, accessed via the central touchscreen. This means you can use your preferred navigation system, for example, complete with integrated information from your vehicle, such as fuel and/or charge levels.

### A personal experience

In the majority of markets\*, your Flying Spur is connected to the cloud, enabling all your personal settings to be stored remotely and accessed by the car as required. This means that even if you move between compatible Bentleys or to a new one, all navigation system destinations, light settings, seat settings and even your favourite radio stations can be downloaded immediately, making them available from the moment you get in.

### A warm welcome

You can use the My Bentley app to remotely check the status of your locks, lights, mileage and fuel, as well as your electric-only range. You can also remotely pre-heat or pre-cool the cabin, with My Cabin Comfort. Just select your desired temperature and let the car's climate control system do the rest. You can even opt to heat individual seats, armrests and the steering wheel, or defrost the windows remotely, before your journey begins.

### Leading the charge

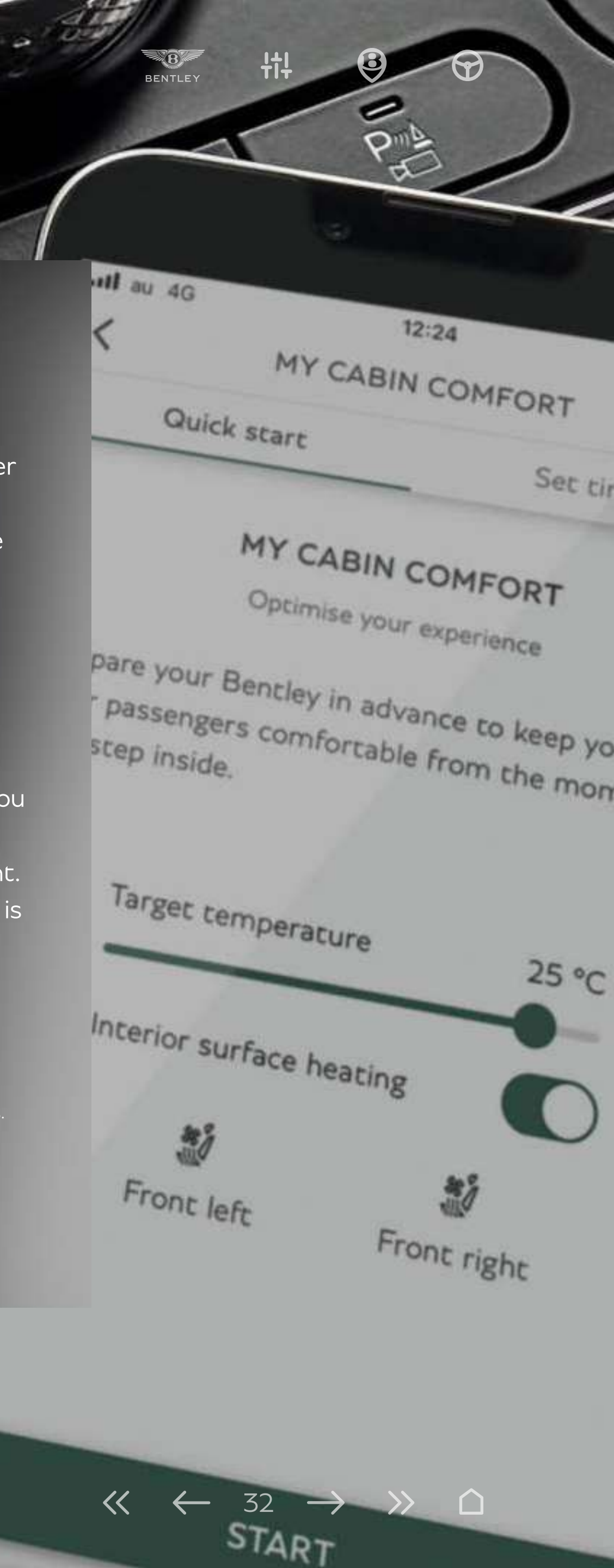
E-charging allows you to plug your car into a charger and activate the charging process remotely via the app. Just enter the time you plan to set off, and the charging system calculates a charge rate that will give you the highest possible level of charge, just in time for your departure.

### You're in safe hands

Emergency features include Private eCall and Roadside Assistance, which automatically connect you to a Bentley Emergency Call Centre or the Bentley Roadside Assistance team in the event of an accident. Furthermore, Theft Alert will notify you if the alarm is activated, giving you complete peace of mind.



Please refer to Specifications and Options pages for standard and optional features. Not all options are available on all models and within all markets. \*Vehicle connectivity and service availability varies by market. Please confirm specification with your local certified Bentley Retailer. \*\* With additional data plan purchased through a mobile network operator. Android is a trademark of Google LLC. Apple CarPlay is a registered trademark of Apple Inc.







### Wireless by design

Internet connectivity is available for all occupants throughout, thanks to a built-in Wi-Fi hotspot.\*

Content on your phone can be accessed in your car wirelessly, through Android™ Auto or Apple CarPlay, which now works in full-screen mode. Online natural speech interaction, meanwhile, lets you activate over 200 car functions by voice, so your hands needn't leave the wheel.

Wireless phone charging is integrated in the stowage area forward of the gear lever, while USB-C ports are also included, for connecting devices that do not support wireless charging.

\*With additional data plan purchased through a mobile network operator. Please refer to Specifications and Options pages for standard and optional features. Not all options are available on all models and within all markets.

## Incredible audio systems

The Flying Spur can be commissioned with a choice of three audio systems. The Bentley Signature Audio system with 650 Watts is tuned by Bentley, or you can choose the 1,500 Watt Bang & Olufsen audio system with BeoSonic sound control.

For really serious audiophiles, the Naim for Bentley premium audio system packs in 18 separate speakers, each with its own amplification, delivering a mighty 2,200 Watts of power. Plus, with two active bass units in the front seats, it really does deliver the ultimate audio experience.

## The Bentley Rotating Display

Standard on the Flying Spur Mulliner and optional on the Flying Spur Speed, the Bentley Rotating Display is a unique demonstration of Bentley's remarkable approach to technology and craft – a three-sided instrumentation panel that allows you to choose how much modern technology you want to see.

Before you switch the engine on, all you see is a smooth, veneered section of the fascia. On starting the car, however, the entire panel will rotate, offering you the first of two alternatives.

Please refer to Specifications and Options pages for standard and optional features. Not all options are available on all models and within all markets.

## The Bentley Rotating Display

On ignition, the 12.3" high-resolution touchscreen rolls into view, allowing you to enjoy the full range of the car's infotainment technology. Designed for unrivalled ease of use, it features a proximity sensor that highlights its onscreen controls as you reach towards it.

The screen itself can be configured to display specific information of your choice, or a combination of up to three windows at once. For example, you could view the navigation map, music controls and your mobile phone call list at the same time.

To see the final face of this three-sided display, however, a further rotation is required.

Please refer to Specifications and Options pages for standard and optional features. Not all options are available on all models and within all markets.



## The Bentley Rotating Display

Pressing the 'Screen' button rotates the display one more time. The touchscreen rotates out of view and into its place rolls a veneered fascia panel into which three beautifully crafted analogue dials have been set, complete with polished chrome bezels. This is a feature unique to Bentley, reflecting a more classic style of instrumentation and a bygone age of grand touring.

For an even more minimal driving experience, you can hold the 'Screen' button for two seconds, which rotates the display twice rather than once, allowing you to drive with just the unadorned veneered panel visible. It's up to you.

Please refer to Specifications and Options pages for standard and optional features. Not all options are available on all models and within all markets.



## Charging and driving your car

The new Ultra-Performance Hybrid powertrain offers five driving modes.

**EV Drive:** The default mode when you start the car, it offers emission-free, electric-only driving. It can take you up to 50 miles (80 km) without engaging the V8 engine, at speeds of up to 87 mph (140 km/h).

**Hybrid:** the car will intelligently decide when to employ the engine and when to use electric power alone, for optimum fuel efficiency and emissions. It will base its decisions on your speed and the road type. If you are using the navigation system, the car can automatically switch between electric and petrol power according to your route.

**Hold:** preserves battery charge for later use, relying instead on the power of the V8 engine. While it will employ the electric motor at times, it optimises the system for dynamic driving.

**Charge:** the engine is used to charge the battery on the move. This makes it less fuel-efficient than Hold, however it can charge the battery up to 80%.

**Sport Hold:** Putting power and exhilaration first, this is the default when the Drive Dynamics control is set to Sport. It runs the V8 engine at all times, boosted by the electric motor, to unleash the car's full power.

When plugged in at home, the car can achieve a full charge in as little as two hours and 45 minutes. The E-Charging service – accessible via the My Bentley smartphone app or the car's navigation system – helps you find the nearest public chargers when you're on the road.

Please refer to Specifications and Options pages for standard and optional features. Not all options are available on all models and within all markets.

# PERSONALISATION



## Express yourself

With a host of accessories and styling options allowing you to configure your Flying Spur to your personal taste, it is highly unlikely you will ever see another one like yours.

You can choose from an extensive palette of exterior paint colours, all of which are designed to maintain their brilliance for many years to come. With numerous different wheel designs, hide options, beautiful natural veneers and distinctive trim options, almost every visible feature of your car can be customised to your own specification.



## Exterior colours

Your Flying Spur can be commissioned in a choice of seven exterior colours, as standard.

In addition, you can also choose from an extended range and a palette of Mulliner paints that includes a vast range of solid, metallic, satin and pearlescent options. In all, there are over 80 colours in total – including the eye-catching new Tourmaline Green, a mid-to-dark metallic finish, and Gravity Grey, a sophisticated finish that appears solid until sunlight hits it, when it reveals sparkling copper accents.

For the ultimate in personalisation, Personal Commission Paint by Mulliner allows you to match a colour that is as unique as you are.

[TO CONFIGURATOR](#)

Please refer to Specifications and Options pages for standard and optional features. Not all options are available on all models and within all markets.





## Wheels

Your choice of wheel can subtly or dramatically alter the character of your Flying Spur. That's why there is a choice of wheel designs and finishes on offer, including designs that are exclusive to each model.

All wheels available for the Flying Spur Speed and Flying Spur Mulliner are an imposing 22" in size, with options including painted finishes such as gloss black, dark tint and bright silver, and the stunning Pale Brodgar, a striking satin grey.

[TO CONFIGURATOR](#)

Please refer to Specifications and Options pages for standard and optional features. Not all options are available on all models and within all markets.

# Wheels



22" Sports alloy wheel – black painted



22" Sports alloy wheel – Pale Brodgar Satin



22" Speed alloy wheel – silver painted



22" Speed alloy wheel – black painted



22" Speed alloy wheel – dark tint



22" Ten swept spoke alloy wheel – grey painted and machined



22" Ten swept spoke alloy wheel – black painted



22" Mulliner alloy wheel – painted and polished with self-levelling badge



22" Mulliner alloy wheel – black painted with self-levelling badge



22" Mulliner alloy wheel – black painted and polished with self-levelling badge

See page 66 for tyre applicability. Please refer to Specifications and Options pages for standard and optional wheels. Not all options are available on all models.



## Veneers

You can choose from several high-gloss and open pore wood veneers, and several gloss painted finishes that can be applied to the fascias and waistrails. Dual Veneers by Mulliner see your choice of high-gloss wood combined with Grand Black, with an eye-catching chrome pinstripe separating the two finishes.

You can also opt for technical finishes including Dark Tint Engine Turned Aluminium, Dark Tint Diamond Brushed Aluminium, Diamond Milled Aluminium and Carbon Fibre. For the centre console only, there is Côtes de Genève.

You can even opt to add gleaming chrome details to the veneer itself. This stunning, handcrafted finish adds a layer of metal to the veneer during construction. Less than 0.1 millimetre thick, these overlays sit virtually flush to the veneer's surface.

[TO CONFIGURATOR](#)

Please refer to Specifications and Options pages for standard and optional features. Not all options are available on all models and within all markets.

# Single Veneers



Burr Walnut by Mulliner



Dark Fiddleback Eucalyptus



Crown Cut Walnut



Liquid Amber



Dark Stained Burr Walnut



Piano Black



Piano Linen by Mulliner



Piano Cricket Ball by Mulliner



Piano Imperial Blue by Mulliner



Piano Burnt Oak by Mulliner



Piano Gravity Grey by Mulliner



Open pore Dark Burr Walnut



Open pore Crown Cut Walnut



Open pore Koa



Grand Black with metal inlay\*

Please refer to Specifications and Options pages for standard and optional veneers.  
 Not all options are available on all models and within all markets.  
 \*Applied to fascia and door waistrail. Piano Black to Centre Console and picnic tables (if selected).

## Dual Veneers by Mulliner



Burr Walnut & Grand Black



Crown Cut Walnut & Grand Black



Dark Fiddleback Eucalyptus & Grand Black



Liquid Amber & Grand Black



Dark Stained Burr Walnut & Grand Black



Open pore Dark Burr Walnut & Grand Black



Open pore Koa & Grand Black



Open pore Crown Cut Walnut & Grand Black



Piano Linen & Grand Black

## Technical Finishes



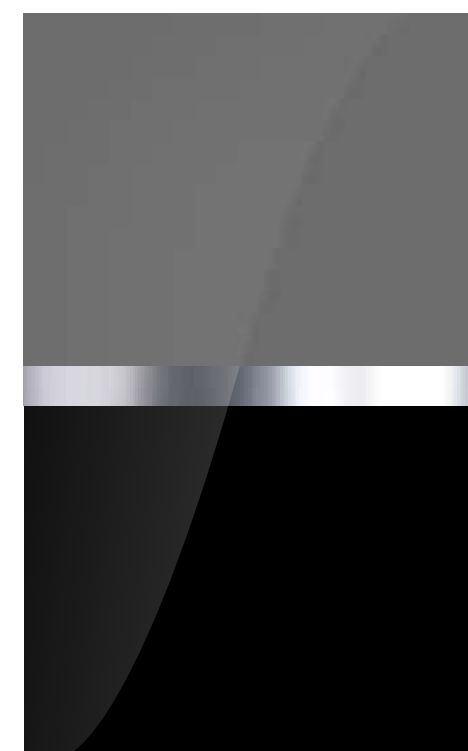
Piano Cricket Ball & Grand Black



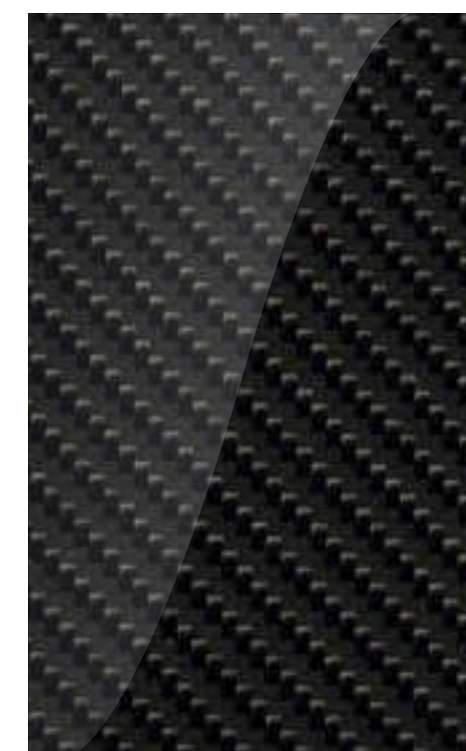
Piano Imperial Blue & Grand Black



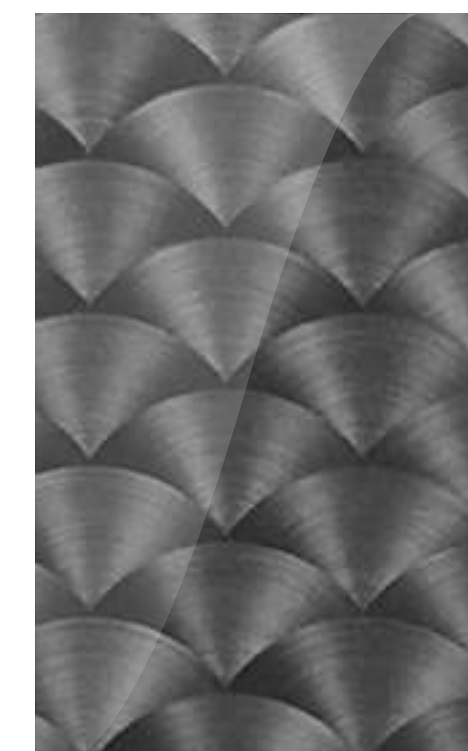
Piano Burnt Oak & Grand Black



Piano Gravity Grey & Grand Black



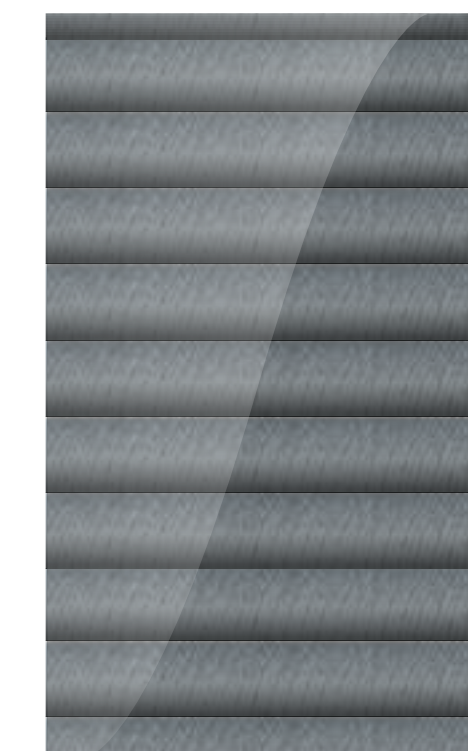
Carbon Fibre\*



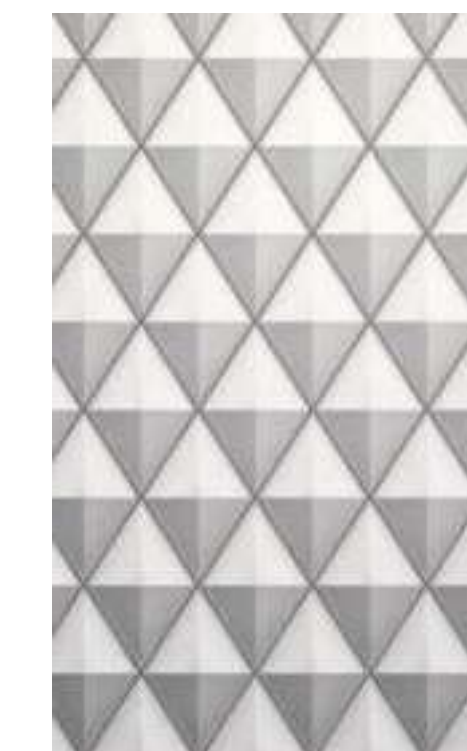
Engine Turned Aluminium – Dark Tint\*



Diamond Brushed Aluminium – Dark Tint\*



Côtes de Genève



Diamond Milled Aluminium\*\*

Please refer to Specifications and Options pages for standard and optional veneers.  
Not all options are available on all models and within all markets.  
\*Applied to fascia and door waistrail. \*\*Mulliner only.

## Hide colours

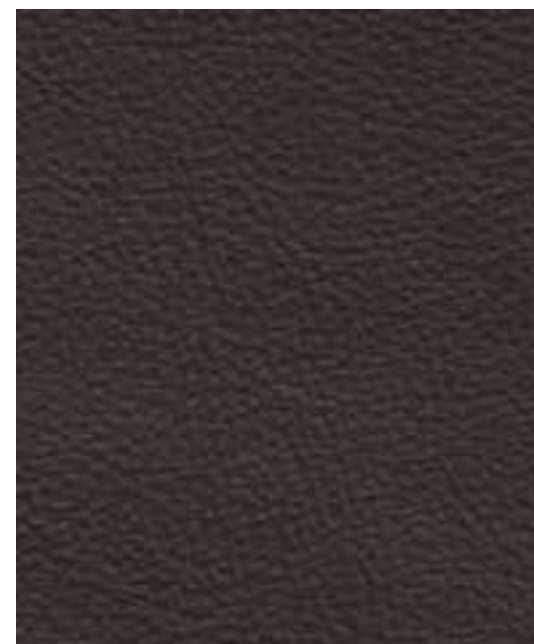
Every inch of the leather upholstery in the Flying Spur is carefully considered – and crafted by hand. From the fascia to the blind stitching, many different areas require a specialised approach. Sections of the hide with high natural elasticity are reserved for curved surfaces like the seats, rather than for piping or flatter areas such as door inserts. The steering wheel is covered in a highly resistant leather to ensure the natural chemicals from the driver's skin are not absorbed, optimising grip, comfort and longevity. And in the Mulliner model, selected areas of the cabin have been upholstered with new olive tan hides, created using a more sustainable production process.

To ensure the interior of your car reflects your personal taste, the Bentley design team have carefully selected a wide range of colours, including new Gravity Grey, created to match the new Gravity Grey exterior paint.

[TO CONFIGURATOR](#)

Please refer to Specifications and Options pages for standard and optional features. Not all options are available on all models and within all markets.

## Hide colours



Burnt Oak



Damson



Cricket Ball



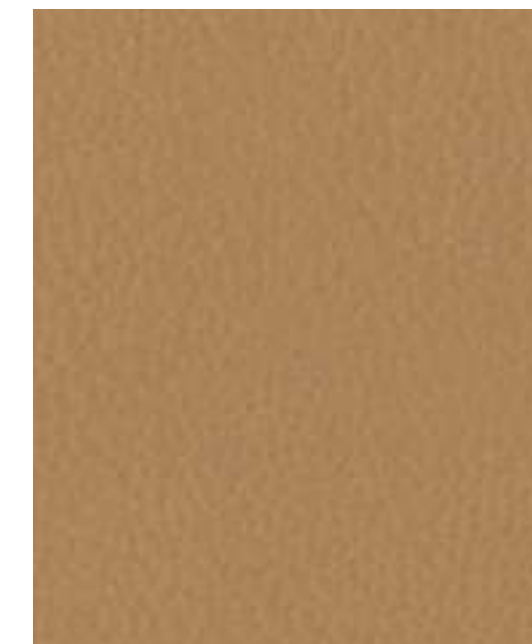
Hotspur



Saddle



Newmarket Tan



Camel



Magnolia



Linen



Portland



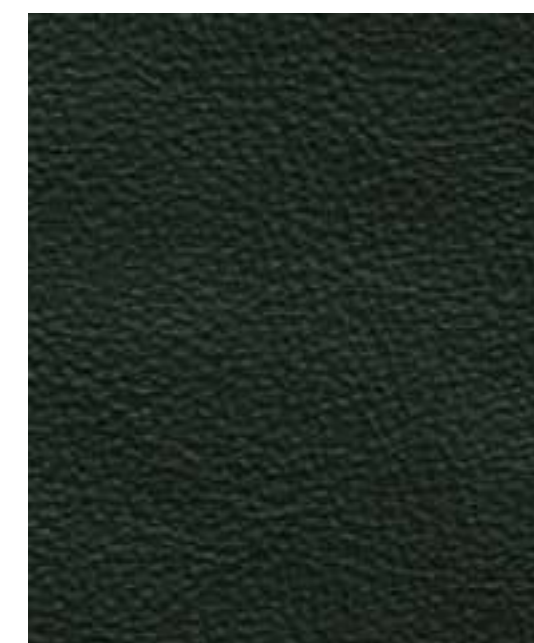
Gravity Grey



Brunel



Beluga



Cumbrian Green



Imperial Blue

## Mulliner Colour Specification accent colours\*



Pillar Box Red



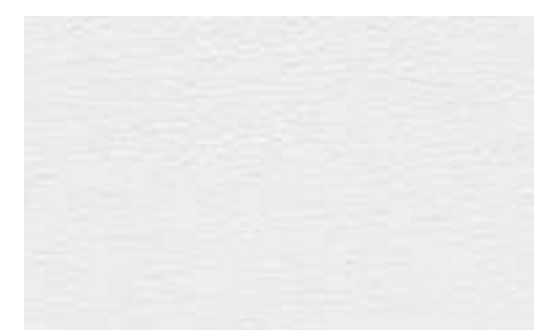
Mandarin



Magenta



Cherry Blossom



White



Cyber Yellow



Light Blue



Kingfisher

\*Available only as part of the Mulliner Colour Specification and as accent colour only. Please refer to Specifications and Options pages for standard and optional hides. Please note, the colours reproduced are for representation purposes only and therefore vary slightly from the actual vehicle.



## Specification packages.

To make it even easier to specify your Flying Spur, our engineers and designers have created packages of features, from technology specifications that make driving easier to styling enhancements to suit your taste and lifestyle.

### TOURING SPECIFICATION

Digital assistance features for effortless cruising.

- Active Lane Assist
- Adaptive Cruise Assist Plus\*
- Predictive Adaptive Cruise Assist\*
- Night Vision
- Head-Up Display\*

### COLOUR SPECIFICATION

Opens up a range of additional interior options for the Flying Spur.

- Choice of two tone interior colour combinations
- Ten additional hide colours

### DARK CHROME INTERIOR SPECIFICATION

Recommended in conjunction with exterior Blackline Specification. Includes but not limited to:

- Door handles and switches
- Speaker grilles
- Bullseye air vents
- Organ stops
- Detailing on drivers instrument panel and steering wheel
- Gear lever
- Centre stack and centre console
- Headrest trim

### MULLINER COLOUR SPECIFICATION

Eight new colours available for all stitching options.

### MULLINER BESPOKE INTERIOR

Fully customise the Mulliner tri-tone interior with free colour choice.

### BLACKLINE SPECIFICATION

Replaces the exterior brightware with a gloss black trim.

- Black gloss bumper lower matrix style grille surround
- Black gloss rear number plate surround brightware
- Black gloss side window surrounds
- Dark chrome tailpipes
- Black gloss wing vent
- Painted radiator shell with black gloss matrix style grille and black surround

### MULLINER BLACKLINE SPECIFICATION

- Black door handles
- Black radiator bezel matrix with black and silver edge
- Black Mulliner wing vents
- Black exterior brightware
- Black tailpipes
- Beluga mirror tops
- 22" Mulliner wheel in full black, or black and bright polished

### MOOD LIGHTING SPECIFICATION

- Multi-coloured mood lighting with seven different colours in two palettes, vibrant and muted, plus matching illuminated treadplates
- Memory function within the Touch Screen Remote

### FRONT & REAR COMFORT SPECIFICATION

The ultimate in Bentley comfort:

- Ventilated seats
- Multi-mode massage seats
- Adjustable cushion length
- Adjustable side bolsters
- Electric headrests
- Hide-trimmed seat belt buckles
- Heated armrests

### WELLNESS SEATING

The ultimate in Bentley comfort:

- Postural Adjust
- Seat Auto Climate

### LEATHER SPECIFICATION

Hide replaces Dinamica throughout:

- Seats
- Fascias
- Steering wheel
- Hide trimmed gear lever

### DIAMOND KNURLING SPECIFICATION

An intricate metal treatment applied to additional elements of the fascia and console:

- Knurled bulls-eye air vents
- Knurled dashboard clock bezel
- Knurled organ stops

### STYLING SPECIFICATION – BODY COLOURED

- Front splitter
- Rear diffuser
- Side sills

### SMOKER'S SPECIFICATION

- Cigar lighter to front and rear console
- Solid metal ash cans – one to front and two to rear cabin

\*Regional applicability. Please refer to Specifications and Options pages for standard and optional features. Not all options are available on all models and within all markets.



## Luggage set

Among the accessories available for the new Flying Spur is an elegant, four-piece luggage set. Crafted in Gravity Grey leather from Italian artisans Pasubio – who are also responsible for the hides used in the car's cabin – it comprises three spacious Weekender bags, each measuring a generous 56 cm x 28 cm x 26 cm, plus a handy backpack. Together, they are sized to fit in the boot perfectly.

## Bespoke commissioning with Mulliner

In the early days of motoring, a new car would consist of an engine, drivetrain, four wheels and a set of controls – nothing more. Everything else was created by a coachbuilder, such as Mulliner.

Today, Mulliner works within Bentley to offer a variety of premium features and optional finishes, alongside bespoke customisation services.

For example, the Mulliner team offer an even greater range of colours and finishes for both the exterior and interior of your Bentley, including painted wheels, stone veneers and colour-matched piano veneers. Further examples include personalisation with embroidery for your seats or chrome overlays to your veneers.

On top of that, the Mulliner team can colour match any object you provide to create a unique paint or hide colour. You can even work with them to design truly bespoke content for your car.

To learn more, visit the website or ask your Retailer about the Mulliner Personal Commissioning Guide.

Please refer to Specifications and Options pages for standard and optional features. Not all options are available on all models and within all markets.



New Flying Spur Speed V8 Hybrid (Change)

Retrieve



To provide a little inspiration, our team at the Bentley factory in Crewe has created a number of example configurations, demonstrating some of the wonderful combinations you can select.

Bentley Suggests

### Tyrolean

An elegant alternative to more commonly seen finishes, the Tourmaline Green exterior finish on this Flying Spur Speed is a clear signal to observers of the exclusivity of the car. The interior takes a bold approach with Hotspur and Gravity Grey hides wit...

[Read more](#)

Exterior paint  
Tourmaline Green - by Mulliner

Wheels  
22" Ten Swept Spoke Wheel - Grey Painted and Bright Machined

Interior  
Colour Split - Speed in Hotspur and Gravity Grey

CONFIGURE



Tyrolean



Fire and Ice



Quiet Intensity



Regal Night



## The Bentley Configurator

The Bentley Configurator website allows you to explore the new Flying Spur in detail, and see all the colours, features and finishes, just as they will look on a new car. There is simply no better way to explore all your options – and discover the right car for you.

TO CONFIGURATOR

## Accessories, servicing and maintenance

Genuine Bentley accessories represent an opportunity to personalise your Flying Spur even further. From the sleek aesthetic enhancements of the Styling Specification to Paint Protection Film to preserve your car's striking looks, there are numerous options available to suit your needs. Moreover, they are all designed specifically by Bentley for your Flying Spur.

Consider this just one reason to bring your vehicle back to an official Bentley Retailer. No one else has the same expertise, the Bentley-trained technicians or access to genuine Bentley parts – not to mention Service and Maintenance products that can give you complete peace of mind, throughout your vehicle's lifetime. There is no better way to keep your Flying Spur close to the impeccable condition it was in, the day it left the factory.

## Financing your Flying Spur

Our finance agreements are tailored to ensure you make the most of your investment. While other financiers look only at the circumstances of the customer, Bentley Financial Services creates bespoke packages, based not just on your needs and income, but also on the vehicle you have in mind.

To discover more, please talk to your local Bentley Retailer or visit [BentleyMotors.com](https://www.bentleymotors.com)



## Arranging a test drive

As with every Bentley, there is only one way to truly appreciate the new Flying Spur: to sit in the driving seat, take the wheel in your hands and feel the breathtaking surge of acceleration as you put your foot down.

To take the next step on the journey of acquiring your car, we recommend a conversation with a Bentley Retailer.

[FIND A RETAILER](#)

# WORLD OF BENTLEY





## The Bentley Collection

The Bentley Collection is a selection of lifestyle products inspired by the distinctive design of our cars. With many items lovingly crafted by highly skilled artisans, the Bentley Collection takes our exciting heritage and vision for the future, and seamlessly weaves it into extraordinary statement pieces.

From unique pieces for the home that elevate your everyday life, to lovingly crafted clothing and accessories designed with a distinctive eye for detail, you can bring Bentley's unrivalled refinement to every aspect of your life.

To view the complete range, please contact your local Bentley Retailer or visit the online store at [BentleyCollection.com](https://www.bentleycollection.com)

## The Bentley Experience

These unique tours offer unrivalled opportunities to explore behind the scenes at the Home of Bentley in Crewe and visit the flagship showroom, CW1 House.

Our knowledgeable hosts will share rare insights into the design and engineering process. You will meet the craftspeople who build your car and discover the innovations and techniques they're using to craft a sustainable vision of the future.

Available as an on-site, real-world experience or as a virtual tour, the Bentley Experience offers a truly tailored journey, with your questions answered by our experts along the way. There is simply no better way to understand the passion that goes into every Bentley.

## Extraordinary Journeys

We run a number of events each year for Bentley drivers and admirers, such as Extraordinary Journeys. Participants experience the world of Bentley beyond the car – taking in beautiful locations, a focus on wellbeing, an exploration of sustainability, and the chance to meet inspiring people who are reshaping the world.

In the UK, for example, Bentley enthusiasts have the opportunity to tour the Home of Bentley in Crewe before setting off on a journey that includes sustainable fine dining, some of the country's most notable landscapes and landmarks, and hospitality at a range of forward-thinking establishments.

To discover more, please talk to your local Bentley Retailer or visit [BentleyMotors.com](https://www.bentleymotors.com)



# SPECIFICATIONS & OPTIONS



60



# Flying Spur Speed

## STANDARD SPECIFICATION

### POWERTRAIN AND VEHICLE DYNAMICS

- Eight speed dual clutch transmission
- Active all-wheel drive
- Two chamber, two valve air suspension with Continuous Damping Control (CDC)
- Bentley Dynamic Ride with electronic all wheel steering
- Electronic Stability Programme (ESP) with Traction Control (TCS) / Anti-lock Braking System (ABS) / Electronic Brake Force Distribution (EBD) / Hydraulic Brake Assist (HBA) / Drag Torque Control (MSR)
- Dynamic ride-height control (auto-adjusts at speed) + ground clearance function
- Drive Dynamics Control
- Launch Control
- Electronic tyre pressure monitoring sensors (TPMS)
- Front vented 420 x 40 mm disc brakes with Bentley branded red brake callipers
- Rear vented 380 x 30 mm disc brakes with red brake callipers
- Electronic parking brake with drive away assist
- Brake pad wear indicator
- Torque vectoring by Electronic Limited Slip Differential

### EXTERIOR

- Choice of seven standard paint colours
- 'Speed' fender badges
- 22" Speed alloy wheel – silver painted
- 22" summer tyre with Pirelli Noise Cancellation System
- Dark tint front and rear lights
- Dark tint radiator matrix grille with dark tint surround
- Dark tint lower bumper grille
- Dark tint bonnet strip
- Dark tint brightware
- Body coloured door mirrors
- Jewel fuel and oil filler caps
- Sports exhaust
- Dark tint chrome large oval exhaust finishers
- Bentley wing badges to bonnet and boot
- 'BENTLEY' lettering to boot

- Bentley 'B' badges to wheel centres
- Illuminated Bentley sill with Speed treadplate and 'Handcrafted in Crewe'
- Keyless entry remote control, with safe locking and start / stop button
- Power latching to doors and boot
- Power operation to bootlid with hands-free 'Virtual Pedal function'
- Extended and crash-active pedestrian protection
- Acoustic, heat-insulating front screen
- Acoustic side glass with IR barrier
- Heated rear screen
- Tyre inflation kit
- Keybox

### INTERIOR

- Piano Black veneer
- Precision Diamond Quilt to seats
- 'Speed' unique mix of Nappa leather and Dinamica to seats and lower cabin in monotone or 'Speed' unique duo tone colour combination
- Choice of 15 hide colours
- 'Speed' embroidered seat emblems
- 'Speed' fascia badge
- Dinamica headlining
- Three dimensional diamond hide to doors
- Front seats – electric 24-way adjustment with heating, ventilation, massage, adjustable bolster function and two memory positions
- Rear seats – electric 14-way adjustment with heating, ventilation, massage and two memory positions
- Super soft Dinamica headrest cushions to rear seats
- Single front centre armrest with heating and fore / aft slide adjustment
- Fold-down, heated rear centre armrest with stowage, twin cup holders 12V socket and two USB-C charging points
- Heated armrests to all four doors
- Seatbelts colour-matched to hide colour, with hide-trimmed buckles
- Metal bulls-eye vents with organ stops

- Sculptural centre air vent with Bentley analogue clock – bright polished
- Diamond knurling to rotary switches and column stalks
- Speed-specific instrument panel graphics
- Dinamica trimmed gear lever
- Steering wheel mounted gearshift paddles
- Single tone, three-spoke, hide and Dinamica trimmed heated steering wheel
- Sports foot pedals
- Deep pile cabin carpets
- Boot carpet in Beluga
- Two cup holders to the front centre console
- Lockable glove box
- Stowage to four doors and front and rear centre consoles
- Sun visors with illuminated vanity mirrors
- Footwell illumination and ambient lighting
- Electrically operated blinds for rear side windows and rear screen
- Child seat anchor for child seat system ISOFIX and rear outer ISOFIX with outer top tether
- Driver and front passenger airbag with front passenger airbag deactivation
- Side airbags front and rear with curtain airbags

### TECHNOLOGY AND DRIVER ASSIST

- Full LED matrix headlamps with high-beam assist
- Full LED tail lamps
- Welcome lighting
- Rain sensing windscreen wipers
- Auto-dimming door mirrors
- Electric tilt-and-reach adjustment steering column with memory and easy-entry functions
- Exit Warning
- Blind Spot Warning
- My Bentley Remote Park Assist†
- Intelligent Park Assist†
- POI (search)\*
- Online real time traffic information\*
- Bluetooth and Wi-Fi audio streaming
- Adaptive brake lights\*

- Manoeuvre Assist
- 3D Surround View
- Emergency Assist
- Turn Assist Rear
- Bentley Safeguard Plus
- Reversing camera with graphic screen representation
- Collision Prevention Assist\*
- Pre-crash, rear\*
- Multi-collision brake\*
- Driver assist Environmental Display
- Acoustic Vehicle Alerting System (AVAS)
- Particle matter sensor
- Auto dimming interior rear view mirror
- Multi-zone automatic climate control
- Air ioniser
- Advanced air filtration and display
- Touch Screen Remote control for rear cabin
- Inductive phone charger and 2 x USB-C charging sockets
- 12V power sockets (x2 cabin, x1 boot)
- Alarm and immobiliser
- Boot lid down lighters
- Bentley GPS tracking system\*
- City Assist
- Top View Camera
- Pedestrian Warning
- Reversing Traffic Warning
- Green Traffic Light Prediction
- Lane Departure Warning
- Theft Alert
- Traffic sign recognition\*

†The driver must constantly supervise the manoeuvre and be able to intervene at any time to maintain safety. See the full details of these specifications on page 49. NCO = No Cost Option. \*Regional applicability. Certain options and specifications may appear as standard or may not be available. Please contact your local Retailer for more information.

## Flying Spur Speed (cont.)

### AUDIO AND COMMUNICATION

- Infotainment system with 12.3" HD touch screen display. Proximity sensors and hard key controls. Digital radio, HDD-Navigation, advance music interface, (AMI), two SD card slots, Bluetooth (A2DP) and WiFi (uPnP) streaming
- Navigation – featuring text-to-speak, voice destination entry and 3D building display
- 60Gb solid-state hard drive
- Hidden antennae
- 4G LTE telephone module\*
- Bentley Signature Audio
- Wireless Apple CarPlay®\*
- Wireless Android Auto\*
- Map update
- Satellite Maps
- Local Hazard Information
- Online search
- Personal navigation assistant
- Roadside assistance call
- Private e-Call\*
- News
- Weather
- Privacy mode
- WiFi hotspot

### SPECIFICATION PACKAGES

- Colour Specification
- Styling Specification – Body Coloured
- Front & Rear Comfort Specification

### OPTIONAL SPECIFICATION

#### POWERTRAIN AND VEHICLE DYNAMICS

- Front vented 420 x 40 mm disc brakes with Bentley branded black brake callipers
- Rear vented 380 x 30 mm disc brakes with black brake callipers

#### EXTERIOR

- Additional exterior paint colours including Mulliner colours
- 22" Speed alloy wheel – black painted
- 22" Speed alloy wheel – dark tint
- 22" Sports alloy wheel – black painted
- 22" Sports alloy wheel – Pale Brodgar Satin
- 22" Ten swept spoke alloy wheel – grey painted and machined
- 22" Ten swept spoke alloy wheel – black painted
- Winter wheels and tyres
- Self-levelling wheel badges by Mulliner
- Illuminated Flying 'B' radiator mascot – black gloss or bright polished
- Panoramic glass tilt and slide sunroof with twin blinds and vanity mirrors
- Heated front windscreen
- Heated, acoustic, IR front screen

#### INTERIOR

- Choice of two additional duo tone colour combinations, in conjunction with Leather Specification
- Four seat configuration and rear console
- Contrast stitching to seat and cabin trim including steering wheel stitching
- Seat piping with contrast stitching including steering wheel stitching
- Hand cross stitching by Mulliner
- Embroidered Bentley emblems (NCO)
- Additional veneers: Burr Walnut by Mulliner, Crown Cut Walnut (NCO), Dark Fiddleback Eucalyptus (NCO), Dark Stained Burr Walnut (NCO), Liquid Amber, open pore Crown Cut Walnut, open pore Dark Burr Walnut, open pore Koa

- Piano Linen, Piano Cricket Ball, Piano Imperial Blue, Piano Burnt Oak, Piano Gravity Grey by Mulliner
- Choice of dual veneers applied to the upper fascia, with Grand Black veneer on the lower fascia and centre console
- High gloss Carbon Fibre – fascia / door waistrails, with Piano Black on the centre console
- Engine turned aluminium – dark tint to centre console
- Engine turned aluminium to fascia and door waistrails – dark tint
- Diamond brushed aluminium to fascia and door waistrails – dark tint
- Decorative insert for front console – Côtes de Genève
- Chrome or coloured-matched pinstripe to fascia and door waistrails
- Leather trimmed gear lever
- Hide headliner
- Contrast seatbelts by Mulliner
- Steering wheel vertical spokes and gear lever in contrast colour by Mulliner
- Diamond knurling to metal bulls-eye vents, organ stops, centre vent and Bentley analogue clock
- Veneered door casings to rear doors
- Electrically deployed veneered picnic tables
- Single tone, three-spoke hide and heated steering wheel
- Single tone, three-spoke, indented hide and heated steering wheel
- Duo-tone, three spoke, hide and heated steering wheel
- Duo-tone, three-spoke indented hide and heated steering wheel
- Deep pile overmats – front and rear
- Contrast binding to deep pile overmats
- Lambswool rugs by Mulliner – front and rear (in addition to standard overmats)

### TECHNOLOGY AND DRIVER ASSIST

- Bentley Rotating Display
- Head-Up Display\*
- Remote control garage door opener\*
- First aid kit and warning triangle
- Valet key
- Bentley Rear Entertainment
- Mulliner LED Welcome lamps
- Animated Welcome Lamps by Mulliner
- Inductive phone charger (rear console – four seat configuration only)

### AUDIO AND COMMUNICATION

- Bang & Olufsen audio system
- Naim for Bentley premium audio

### SPECIFICATION PACKAGES

- Blackline Specification
- Dark Chrome Interior Specification
- Leather Specification
- Wellness Seating
- Diamond Knurling Specification
- Mood Lighting Specification
- Mulliner Colour Specification
- Smoker's Specification
- Touring Specification

See the full details of these specifications on page 49.  
 NCO = No Cost Option. \*Regional applicability.  
 Certain options and specifications may appear as standard or may not be available. Please contact your local Retailer for more information.

# Flying Spur Mulliner

## STANDARD SPECIFICATION

### POWERTRAIN AND VEHICLE DYNAMICS

- Eight speed dual clutch transmission
- Active all-wheel drive
- Two chamber, two valve air suspension with Continuous Damping Control (CDC)
- Bentley Dynamic Ride with electronic all wheel steering
- Electronic Stability Programme (ESP) with Traction Control (TCS) / Anti-lock Braking System (ABS) / Electronic Brake Force Distribution (EBD) / Hydraulic Brake Assist (HBA) / Drag Torque Control (MSR).
- Dynamic ride-height control (auto-adjusts at speed) + ground clearance function
- Drive Dynamics Control
- Launch Control
- Electronic tyre pressure monitoring sensors (TPMS)
- Front vented 420 x 40 mm disc brakes with Bentley branded black brake callipers
- Rear vented 380 x 30 mm disc brakes with black brake callipers
- Electronic parking brake with drive away assist
- Brake pad wear indicator
- Torque vectoring by Electronic Limited Slip Differential

### EXTERIOR

- Choice of seven standard paint colours
- 22" Mulliner alloy wheel – painted and polished with self-levelling wheel badge\*
- 22" summer tyre with Pirelli Noise Cancellation System
- Panoramic glass tilt and slide sunroof with twin blinds and vanity mirrors
- Mulliner floating diamond radiator grille – bright
- Bright chromed matrix style grille to lower bumper apertures
- Mulliner double diamond wing vent
- Satin silver door mirror caps
- Illuminated Flying 'B' radiator mascot – bright polished stainless steel
- Illuminated Bentley sill with Mulliner treadplate and 'Handcrafted in Crewe'
- Chrome bonnet strip

- Chrome trim to side window surrounds
- Chrome trim to lower doors, fenders and rear bumper
- Keyless entry remote control, with safe locking and start / stop button
- Power latching to doors and boot
- Bentley wing badges to bonnet and boot
- Chrome 'BENTLEY' lettering to boot
- Jewel fuel and oil filler caps
- Bright chrome large oval exhaust finishers
- Power operation to bootlid with hands-free 'Virtual Pedal function'
- Extended and crash-active pedestrian protection
- Acoustic, heat-insulating, front screen
- Acoustic side glass with IR barrier
- Heated rear screen
- Tyre inflation kit
- Mulliner branded key box and key pouches

### INTERIOR

- Four seat configuration and rear console
- Animated Welcome Lamps by Mulliner
- Mulliner clock
- 'Mulliner' fascia badge
- Mulliner colour split including piping
- Bentley Rotating Display
- Single finish veneer – Grand Black with Mulliner overlays
- Diamond milled aluminium – centre console
- Precision Diamond Quilt pattern with Mulliner contrast stitch to seats
- Three dimensional diamond hide to doors
- Hide headliner
- Contrast stitching to seat and cabin trim including steering wheel stitching
- Electrically deployed veneered picnic tables
- Nappa leather interior on seats and lower cabin
- Eight Mulliner colourway recommendations each with tri colour combinations
- Mulliner seat embroidery

- Front seats – electric 24-way adjustment with heating, ventilation, massage, adjustable bolster function and two memory positions
- Rear seats – electric 14-way adjustment with heating, ventilation, massage and two memory positions
- Single front centre armrest with heating and fore / aft slide adjustment
- Heated armrests to all four doors
- Super soft Dinamica headrest cushions to rear seats
- Heated rear centre armrest with stowage, twin cup holders 12 V socket and two USB-C charging points
- Seatbelts colour-matched to hide colour, with hide-trimmed buckles
- Mulliner-specific instrument panel graphics
- Metal bulls-eye vents with organ stops
- Sculptural centre air vent with Mulliner analogue clock – bright polished
- Diamond knurling to rotary switches and column stalks
- Leather trimmed gear lever
- Sports foot pedals
- Steering wheel mounted gearshift paddles
- Duo-tone, three spoke, hide and heated steering wheel
- Deep pile cabin carpets
- Mulliner overmats with accent micro piping
- Boot carpet in Beluga
- Two cup holders to the front centre console
- Lockable glove box
- Stowage to four doors and front and rear centre consoles
- Sun visors with illuminated vanity mirrors
- Footwell illumination and ambient lighting
- Electrically operated blinds for rear side windows and rear screen
- Driver and front passenger airbag with front passenger airbag deactivation
- Side airbags front and rear with curtain airbags
- Child seat anchor for child seat system ISOFIX and rear outer ISOFIX with outer top tether

## TECHNOLOGY AND DRIVER ASSIST

- Full LED matrix headlamps with high-beam assist
- Full LED tail lamps
- Rain sensing windscreen wipers
- Auto-dimming door mirrors
- Electric tilt-and-reach adjustment steering column with memory and easy-entry functions
- My Bentley Remote Park Assist<sup>†</sup>
- Intelligent Park Assist<sup>†</sup>
- POI (search)\*
- Online real time traffic information\*
- Bluetooth and Wi-Fi audio streaming
- Adaptive brake lights\*
- Manoeuvre Assist
- 3D Surround View
- Emergency Assist
- Turn Assist Rear
- Bentley Safeguard Plus
- Reversing camera with graphic screen representation
- Collision Prevention Assist\*
- Pre-crash, rear\*
- Multi-collision brake\*
- Driver assist Environmental Display
- Acoustic Vehicle Alerting System (AVAS)
- Particle matter sensor
- Exit Warning
- Blind Spot Warning
- Auto dimming interior rear view mirror
- Multi-zone automatic climate control
- Air ioniser
- Advanced air filtration and display
- Touch Screen Remote control for rear cabin

<sup>†</sup>The driver must constantly supervise the manoeuvre and be able to intervene at any time to maintain safety.

See the full details of these specifications on page 49.

NCO = No Cost Option. \*Regional applicability.

Certain options and specifications may appear as standard or may not be available. Please contact your local Retailer for more information.

## Flying Spur Mulliner (cont.)

- Inductive phone charger and 2 x USB-C charging sockets
- 12V power sockets (x2 cabin, x1 boot)
- Alarm and immobiliser
- Boot lid down lighters
- Bentley GPS tracking system\*
- Top View Camera
- Pedestrian Warning
- Reversing Traffic Warning
- Green Traffic Light Prediction
- Lane Departure Warning
- Theft Alert
- Traffic sign recognition\*
- City Assist

### AUDIO AND COMMUNICATION

- Infotainment system with 12.3" HD touch screen display. Proximity sensors and hard key controls. Digital radio, HDD-Navigation, advance music interface, (AMI), two SD card slots, Bluetooth (A2DP) and WiFi (uPnP) streaming.
- Navigation – featuring text-to-speak, voice destination entry and 3D building display
- 60Gb solid-state hard drive
- Hidden antennae
- 4G LTE telephone module\*
- Bentley Signature Audio
- Wireless Apple CarPlay®\*
- Wireless Android Auto\*
- Map update
- Satellite Maps
- Local Hazard Information
- Online search
- Personal navigation assistant
- Roadside assistance call
- Private e-Call\*
- News
- Weather
- Privacy mode
- WiFi hotspot

### SPECIFICATION PACKAGES

- Colour Specification
- Mood Lighting Specification
- Wellness Seating
- Touring Specification
- Front & Rear Comfort Specification

### OPTIONAL SPECIFICATION

#### POWERTRAIN AND VEHICLE DYNAMICS

- Front vented 420 x 40 mm disc brakes with Bentley branded red brake callipers
- Rear vented 380 x 30 mm disc brakes with red brake callipers

#### EXTERIOR

- Additional exterior paint colours including Mulliner colours
- 22" Mulliner alloy wheel – Black painted with self-levelling wheelbadge (NCO)
- 22" Mulliner alloy wheel – polished with self-levelling wheelbadge (NCO)
- Winter wheels and tyres
- Heated, acoustic, IR front screen
- Body coloured door mirrors (NCO)
- Sports exhaust
- Heated front windscreen

#### INTERIOR

- 4+1 Seating configuration (NCO)
- Embroidered Bentley emblems (NCO)
- Hand cross stitching by Mulliner
- Contrast seatbelts by Mulliner
- Seat piping with contrast stitching including steering wheel stitching (NCO)
- Additional veneers: Burr Walnut by Mulliner, Crown Cut Walnut, Dark Fiddleback Eucalyptus, Dark Stained Burr Walnut, Liquid Amber, open pore Crown Cut Walnut, open pore Dark Burr Walnut, open pore Koa, Piano Black (all NCO)

- Choice of dual veneers applied to the upper fascia, with Grand Black veneer on the lower fascia and centre console (all NCO)
- Piano Linen, Piano Cricket Ball, Piano Imperial Blue, Piano Burnt Oak, Piano Gravity Grey by Mulliner
- High gloss Carbon Fibre – fascia / door waistrails, with Piano Black on the centre console (NCO)
- Engine turned aluminium – dark tint to centre console (NCO)
- Engine turned aluminium to fascia and door waistrails – dark tint (NCO)
- Diamond brushed aluminium to fascia and door waistrails – dark tint (NCO)
- Decorative insert for front console – Côtes de Genève
- Diamond knurling to metal bulls-eye vents, organ stops, centre vent
- Veneered door casings to rear doors
- Standard colour splits (NCO)
- Single tone, three-spoke hide and heated steering wheel (NCO)
- Single tone, three-spoke indented hide & heated steering wheel (NCO)
- Duo-tone, three-spoke indented hide & heated steering wheel (NCO)
- Steering wheel vertical spokes and gear lever in contrast colour by Mulliner
- Lambswool rugs by Mulliner – front and rear (in addition to standard overmats)
- Headliner matched to secondary hide (NCO)
- Seatback matched to main hide (NCO)

#### TECHNOLOGY AND DRIVER ASSIST

- Remote control garage door opener\*
- First aid kit and warning triangle
- Inductive phone charger (rear console – four-seat configuration only)
- Valet key
- Bentley Rear Entertainment

### AUDIO AND COMMUNICATION

- Bang & Olufsen audio system
- Naim for Bentley premium audio

### SPECIFICATION PACKAGES

- Mulliner Blackline Specification
- Dark Chrome Interior Specification
- Mulliner Colour Specification
- Smoker's Specification
- Leather Specification
- Diamond Knurling Specification
- Mulliner Bespoke Interior
- Styling Specification – Body Coloured

See the full details of these specifications on page 49.  
 NCO = No Cost Option. \*Regional applicability.  
 Certain options and specifications may appear as standard or may not be available. Please contact your local Retailer for more information.



## V8 hybrid powertrain



Engine: 4.0 L V8 PHEV engine  
Max power: 771 bhp / 782 PS / 575 kW  
(Combined System Power)  
Max torque: 738 lb ft / 1000 Nm  
(Combined System Torque)  
Transmission: 8-speed dual clutch  
Driveline: Active all-wheel drive  
Top speed: 177 mph / 285 km/h  
0-60 mph / 0-100 km/h: 3.3 / 3.5 seconds  
Wheelbase: 3,194 mm / 125.75 in  
Overall length: 5,316 mm / 209.29 in  
Width (across body): 1,987 mm / 78.27 in  
Width (including mirrors): 2,187 mm / 86.1 in  
Overall height: 1,474 mm / 58.03 in  
Fuel tank: 80 litres / 21 US gallons

Boot volume (four seat configuration):  
346 litres / 12.2 cu ft  
Gross weight: 3,215 kg  
Unladen weight: 2,646 kg  
**Fuel consumption** (WLTP Cycle)  
Combined (UK): 26.4 mpg / 10.7 l/100km  
CO<sub>2</sub> combined: 33 g/km  
Driving range: 515 miles / 829 km  
E-range (EAER): 50 miles / 81 km

**Fuel consumption**  
(NEDC Cycle WLTP Equivalent – Europe)  
Combined (UK): TBC  
CO<sub>2</sub> Emissions: TBC  
E-range: TBC

**Fuel consumption** (NEDC Cycle – ROW)  
Urban: TBC  
Extra Urban: TBC  
Combined: TBC  
CO<sub>2</sub> Emissions: TBC

**Fuel consumption** (EPA Cycle)  
City driving (US): TBC  
Highway driving (US): TBC  
Combined (US): TBC

Your mileage will vary and depends on several factors including your driving habits and vehicle condition.



## Tyre applicability.

Please click on tyre specification for full product information and EPREL energy labels.

Size	Make	Tyre specification	Flying Spur Speed	Flying Spur Mulliner
			V8 hybrid	V8 hybrid
21"	Pirelli	WINTER SOTTO ZERO 3 265/40 R21 (105W) XL (B) – (FRONT)	●	●
		WINTER SOTTO ZERO 3 305/35 R21 (109W) XL (B) – (REAR)	●	●
22"	Pirelli	PZERO 275/35R22 104W XL A/S ncs (BH) – (FRONT)	●	●
		PZERO 315/30R22 107W XL A/S ncs (BH) – (REAR)	●	●
		PZERO 275/35ZR22 (104Y) XL ncs (BH) – (FRONT)	●	●
		PZERO 315/30ZR22 (107Y) XL ncs (BH) – (REAR)	●	●







The model presented in this brochure includes optional specifications. Specifications, standard equipment, options, fabrics and colours are subject to change without notice. Your Bentley Retailer will always have the latest information. The name 'Bentley' and the 'B' wings design are registered trademarks of Bentley Motors Limited. Bentley Motors Limited acknowledges the rights of third parties in other trademarks. The models shown may include European and non-European specifications. © October 2024.

