



Volkswagen. Das Auto.

# The Vento





It's no coincidence that Volkswagen stands for the 'People's Car'. Quite simply because we build our cars with you in mind. We craft them with great thought, innovation and ingenuity. We fuss over every little detail. We even test them meticulously. And, if a car doesn't match up our exacting standards (down to the hundredth of a decimal), we start all over again. It's no wonder then that, across the world, a Volkswagen isn't just a car; it's Das Auto.

### Contents

- 04 Design
- 06 Exterior
- 08 Interior
- 09 Space
- 10 Convenience
- 12 Safety
- 13 Engines and Transmissions
- 14 Colours and Upholstery
- 15 Technical Specifications
- 16 Features
- 19 Service



## Built to sweep you off your feet.

The Vento is a master class in German engineering. Put together with finesse and precision, the Vento offers the finest driving experience in its class. From the cosy interiors to the expertly refined engine, from a host of tech features to safety features, the Vento offers a drive unlike any. Turn the key and see for yourself what it means to fall in love. With a car.

## Exterior.

The art of improving something nearly perfect comes naturally to Volkswagen engineers. We realised that just good headlights weren't good enough. So, we made them better. The state-of-the-art tail lights were designed keeping in mind everyone's safety on the road, not just yours.



The clean yet stunning body lines distinctive to the Vento are carried over to its tail-end as well. Subtle touches of chrome on the boot lid and well-flushed integrated tail lights reiterate that the Vento is truly best in its class.



Standard for Highline



The elegantly designed headlights and the chrome-accented front grille add to the charm of the Vento. Our designers constantly try and come up with fresh features to make your drive a lot more stylish. The Vento Highline also comes with a pair of sleek, black headlamps. The next time you hit the road, do it in style.



The sleek body-coloured door handles complement the Vento's distinct profile. Scientifically recessed, the handles are designed to protect the paint from unfortunate scratches.



Standard for Comfortline



The beauty of the Vento, now even more enhanced. Stylish and elegant alloy wheels are sure to get heads turning your way.



The body-coloured rear-view mirrors blend effortlessly with the muscular body lines of the Vento. Areas most prone to unsightly scratches feature a black base for added protection.



Crystal clear and accented in chrome best describes the superior fog lamps in the Vento. Needless to mention, you'll simply love the way they light up the road ahead during bad weather.



The "Vento" insignia on the rear signifies our passion towards exceptional engineering.

Standard for Highline

## Interior.

Comfort in the Vento is unparalleled. Whether it's the innovative green-tinted, heat-insulated glass that guarantees cooler interiors or the inimitable dust and pollen filter in the air intake, everything is uncompromisingly designed. The Vento is reassuringly flawless - all storage spaces are flocked on the interiors and all covers shut with a reassuring click. We've left no stone unturned in crafting interiors that are a class above the rest.



The spacious seats, upholstered for added comfort, lend a luxurious touch to the back. A foldable armrest and dual rear AC vents assure a relaxed time to everyone out for a drive.



Enjoy your favourite music as you drive. The convenience of audio controls, call answering and Bluetooth control, now right at your fingertips.



There's never a dull moment in a Volkswagen. The RCD music system with 4 speakers, integrated USB, AUX-IN, SD card slot and a Radio remote app for Ios and Android makes for truly memorable company everytime you're out for a spin.



The intelligent Climatronic air-conditioning makes it a point to always keep you comfortable. The Vento automatically regulates the blower speed inside to ensure a pleasant climate, making every journey a comfortable one.



## Space.

We understand your need for personal space and yet be with the whole family on a long drive. Precisely why you'll find a good balance of comfort and space when it comes to the exquisite interiors. Tastefully selected upholstery and the large glass area put the Vento in a league of its own.



Why choose when you can carry your world with you? The trunk offers all the space you desire. And the attention to detail is clearly evident. Note the low loading height that makes it that much easier to heft heavy luggage and the discreet rub shield that protects the body from scratches. Trunk illumination adds to the convenience. Why, take a look at the fully-lined trunk, trunk floor and the well-finished trunk lid, and you'll find beauty even in the smallest of details.



Concealed underneath the front armrest is a fully flocked bin that makes sure no scratches mar the shine of your mobile phone when it's placed in it.



Neatly designed on the front doors are the large bottle holders integrated into the map pockets, for easy accessibility.



Here is a perfectly sized cupholder to hold your drink safe whilst you drive through chaotic traffic.

## Convenience.

Convenience in the Vento is a given, what with countless nights and numerous weekends put in by our engineers in designing the interiors. Much thought has gone into each and every feature, so as to make your driving experience that much more pleasurable.



We understand that no two drivers are the same. As a result, we've made the steering wheel adjustable for both, reach and rake. Finding the perfect driving position is not just a matter of comfort. It's what makes the Vento that much better to drive. What's more, in Highline, the steering wheel comes stylishly leather-wrapped, for a perfect grip and added comfort.



An armrest for you while driving is a comfort you'll take no time in getting used to. For all the drives that involve 'stop-go' traffic, this little wonder makes a big difference.



You'll be pleasantly surprised by the electrically adjustable mirrors which are controlled by an intuitive joystick control. A flick of the wrist and there you have it; perfectly positioned mirrors.



The foldable armrest in the rear ensures that even the passengers at the back are taken good care of.



The perfect combination of comfort and posture comes naturally once you are in the driver's seat, what with its height adjustment lever. Ingenious, if we may say so.



Comfort meets convenience in the Vento. Stylishly tucked beneath the rear AC vents is a foldable cupholder, that gives a perfect grip to your morning or evening cuppa.



Maximise legroom at the back with SpaceMax control. For the first time in this segment, a car allows you to adjust the co-driver's seat from the back. The individually adjustable dual rear AC vents make the journey at the back as comfortable as the front.



For those obsessed with reading, the Vento caters to your need as well. The thoughtfully positioned lamps above the rear seat make sure that your journey is always well illuminated.



With greater success in the offing, you'll need to keep a level head. Well-equipped with fully adjustable headrests, the Vento ensures safety along with total comfort.

## Safety.

Incorporated with world-class safety features, the Vento is designed to protect you and your family. With its robust design and superior engineering that has its genesis in an ultra high-strength steel frame, the Vento offers exceptional safety with a tough build that is reassuring every time you feel the heft of the doors and the thump of its boot closing. This is supplemented with advanced safety features such as dual airbags and ABS.



Anti-pinch protection windows protect you in case your arm is resting along the seam and the windows happen to shut. An important safety technology that prevents windows from closing, even when there is the slightest resistance or hand movement.



The Vento is equipped with ABS (Anti-lock Braking System) that ensures the car remains manoeuvrable and in control, even in the event of heavy braking on slippery monsoon roads.



The Vento not only keeps you safe as you drive but also as you park. The rear parking sensors assist in parking manoeuvres by emitting audible signals, alerting the driver to any obstacles behind: the closer you are to an obstacle, the faster the sound frequency.



The key to your Vento features a standard electronic immobiliser anti-theft device. In the Comfortline and Highline, you can also remote lock, unlock and open the boot. In itself, the key is also designed to fold in so that you can carry it comfortably in your trouser pockets.



We don't take anything for granted, not even the unforgiving roads. Ergo, the Vento carries dual airbags for the driver and co-driver. Along with the seat belts and ABS, the Vento is one of the safest cars in its class.



3-point seat belts are the primary means of protection and are available for front and rear outboard seat occupants. The front seat belts are height-adjustable for a more comfortable and secure fit.

## Engines and Transmissions.

The Vento offers three engine variants: 1.6L MPI Petrol, 1.2L TSI Petrol & 1.6L TDI Diesel. The 1.6L petrol engine delivers 105 PS (77kW) of peak power and a peak torque of 153 Nm at a surprisingly low 3800 rpm. But it's not only about power, it makes better sense too. Ensuring zero compromise, the super-efficient petrol engine ensures you can travel 15.04 km for every litre under (ARAI) test conditions. The 1.2L TSI petrol engine delivers 105 PS (77kW) of peak power and a mind-boggling peak torque of 175 Nm at 1500~4100 rpm with an incredible fuel-efficiency of 16.93 kmpl under (ARAI) test conditions.

Equally superior is the Turbocharged Common Rail 1.6L diesel engine in the Vento that is designed to deliver dynamic performance and go frugal on fuel as well. This engine produces 105 PS (77kW) of unbridled power and an amazing torque of 250 Nm from 1500 rpm to 2500 rpm. It offers a fuel-efficiency of 20.5 km/l under (ARAI) test conditions. Take it out for a drive and you'll know why they call it "the best of both worlds".



The Vento features our latest 1.6L Common Rail diesel technology which is incredibly fuel-efficient, yet surprisingly quiet. You'd probably need to drive it to believe it.



At its heart, the Vento TSI runs a pulse on an incredibly efficient, high-performance 1.2L TSI engine. A first in its segment, this beauty makes zero compromises on power, while maintaining fuel consumption. This supreme machine boasts an unmatched torque of 175 Nm, ranging from 1500 to 4100 rpm. And, of course, complementing this breakthrough internal framework is the superior build quality of a Volkswagen.



When it comes to industry benchmarks, we'd rather set some of our own. One drive with the 7-speed Dual-shift Gearbox and you'll be a believer too. The automatic transmission and smooth gear shift in this refined piece of technology promises an exhilarating performance and an unforgettable drive. In seventh heaven, anyone?



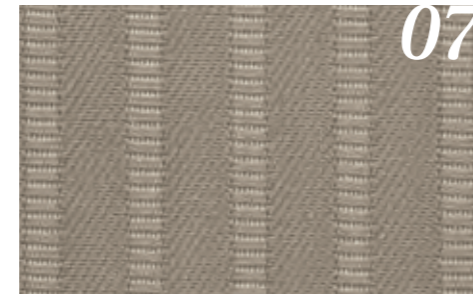
Refinement is the hallmark of the 5-speed manual transmission. In the Highline, the gear knob comes stylishly wrapped with high quality leather, effortlessly delivering a positive shift action. Besides, this transmission helps deliver exhilarating performance coupled with impressive fuel-efficiency, making it a force to reckon with.



## Colours and Upholstery.

The more you look at the Vento, the more you'll fall in love with it. What's better, you can choose from our wide array of colours. Right from the superior 'Leatherette' upholstery to the bright and shiny paint finishes, the combinations are aplenty.

- 01 Candy White (B4) T C H  
Non-Metallic
- 02 Pepper Grey (U5) H  
Metallic
- 03 Terra Beige (4G) H  
Metallic
- 04 Shadow Blue (P6) H  
Metallic
- 05 Deep Black (2T) H  
Pearl Effect
- 06 Reflex Silver (8E) H  
Metallic
- 07 Seashell (NX) T C  
Cloth Type Livon
- 08 Corn Silk Beige (GN) H  
Leatherette



Available in selected colours/upholstery combinations. Visuals in this brochure may show options not available in India. Please note: The print process does not allow for exact reproduction of the paint finishes and seat upholstery colours. Features and specifications are liable to change without any prior notice.\* Please contact your nearest dealer for exact features.

\*Accessories shown may not be a part of standard equipment.

T Standard for Trendline    H Standard for Highline  
C Standard for Comfortline

## Technical Specifications.

Versions	Description	1.2L TSI Petrol	1.6L Petrol (TL/CL/HL)	1.6L CR Diesel (TL/CL/HL)	
<b>Engine &amp; Transmission</b>	Engine type	4 Cylinder Turbocharged direct injection	4 Cylinder In-line DOHC	4 Cylinder In-line DOHC	
	Displacement (cc)	1197	1598	1598	
	Fuel efficiency (km/l)*	16.93	15.04	20.54	
	Transmission	7-speed DSG Automatic	5-speed MT	5-speed MT	
<b>Performance</b>	Max.Power[PS(kw)]@rpm	105 (77 )@5000	105 (77) @ 5250	105(77)@4400	
	Max.Torque (Nm@rpm)	175@1500-4100	153@3800	250@1500-2500	
<b>Steering</b>	Type	EPS	EPS	EPS	
	Turning radius (metres)	5.4	5.4	5.4	
<b>Acceleration</b>	Top speed (km/h)#	NA	185	186	
<b>Brakes</b>	Front	Disc	Disc	Disc	
	Rear	Drum	Drum	Drum	
<b>Suspension</b>	Front	McPherson strut with stabiliser bar	McPherson strut with stabiliser bar	McPherson strut with stabiliser bar	
	Rear	Semi-independent trailing arm	Semi-independent trailing arm	Semi-independent trailing arm	
<b>Tyres &amp; Wheels</b>		185/60 R15(Alloy)	TL 175/70 R14(Steel) CL 185/60 R15(Steel) HL 185/60 R15(Alloy)	TL 175/70 R14(Steel) CL 185/60 R15(Steel) HL 185/60 R15(Alloy)	
	<b>Weight</b>	Kerb weight (kg)	1178	TL= 1120, CL=1130, HL=1130	TL= 1190, CL=1220, HL=1220
		Gross vehicle weight (kg)	1720	1720	1760
<b>Exterior dimensions</b>	Length, mm	4384	4384	4384	
	Width, mm	1699	1699	1699	
	Height, mm	1466	1466	1466	
	Wheelbase, mm	2552	2552	2552	
	Minimum ground clearance, mm	168	168	168	
<b>Fuel tank</b>	Fuel tank capacity (ltrs)	55	55	55	

\* Test results of Rule 115 of CMVR  
# Internal Test data



# Features.

	Trendline ↓	Comfortline ↓	Highline ↓
<b>Exterior</b>			
Halogen headlights	●	●	●
Galvanised body with 6-year anti-perforation warranty	●	●	●
Body-coloured bumpers	●	●	●
Windscreen in heat-insulating glass	●	●	●
Heat-insulating glass for side and rear windows	●	●	●
Chrome finish on front grille	●	●	●
Body-coloured exterior door handles and mirrors	—	●	●
5Jx14 steel wheels with full wheel covers	●	—	—
6Jx15 steel wheels with full wheel covers (Set of 4)	—	●	—
6Jx15 'Lakeside' alloy wheels (Set of 4)	—	—	●
Green wedge at top section of windscreen	—	—	●
Chrome finish on trunk	—	—	●
Chrome finish on front fog light surrounds	—	—	●
Headlamps in black finish	—	—	●
Metallic/Pearl effect paint	○	○	●
<b>Interior</b>			
Superior 'Livon' fabric upholstery	●	●	—
High quality scratch-resistant plastic interiors	●	●	●
3 grab handles above doors, folding with coat hooks	●	●	●
Storage compartment in front doors including cupholders for 1.5 litre bottle	●	●	●
Sunglass holder inside glove box	●	●	●
Front centre console including 12V outlet	●	●	●
Centre console including 2 cupholders	●	●	●
Rear doors with storage compartments	●	●	●
Trunk illumination	●	●	●
Fully lined trunk and trunk floor	●	●	●
Front centre armrest including cupholder for rear seat	—	●	●

○ Optional ● Standard

Specifications and features are subject to change without prior notice.

	Trendline ↓	Comfortline ↓	Highline ↓
<b>Interior</b>			
Rear centre armrest	—	●	●
Chrome interior trims	—	—	●
Leather-wrapped steering wheel	—	—	●
Leather-wrapped gearshift knob and handbrake lever handle	—	—	●
Leatherette seat covering	—	—	●
<b>Safety</b>			
Front disc brakes	●	●	●
Height-adjustable headrests (front and rear)	●	●	●
Electronic engine immobiliser with floating code	●	●	●
Interior rear-view mirror, manual day/night	●	●	●
3-point front seat belts	●	●	●
3-point rear outer seat belts, lap belt in middle	●	●	●
High mounted third brake light	●	●	●
Fog lights, rear	●	●	●
Fog lights, front	—	●	●
Pinch guard safety for all 4 power windows	—	●	●
ABS (Anti-lock Braking System)	—	—	●
Dual airbags, driver and co-driver side	—	—	●
Electronic Stabilisation Program (ESP) - For TSI-DSG Only	—	—	●
Hill-Hold Function - For TSI-DSG Only	—	—	●
<b>Functional Features</b>			
Air-conditioning	●	●	●
Dust and pollen filter	●	●	●
Rear parking sensors	●	●	●
Height-adjustable driver's seat	●	●	●
Gear shift indicator (for Diesel only)	●	●	●
Speed-sensitive electronic power steering	●	●	●
Steering wheel, tilt and telescopic adjustable	●	●	●
Electric trunk opening	●	●	●

Functional Features	Trendline ↓	Comfortline ↓	Highline ↓
Front intermittent wipers – 4-step variable speed setting	●	●	●
Instrument cluster with tachometer, speedometer, odometer and trip odometer	●	●	●
Vanity mirror in left side sunblind	●	●	●
Ticket holder in right side sunblind	●	●	●
Fuel lid with push-style opening and central-locking	●	●	●
Lane change indicator - triple flash	●	●	●
Rear defogger	●	●	●
Central locking system	●	●	●
Power windows (front and rear)	●	●	●
Radio preparation includes roof antenna and partial pre-wiring	●	—	—
2 DIN RCD 220 music system	—	●	—
2 DIN RCD 320 music system	—	—	●
4 Speakers	●	●	●
USB connectivity	—	●	●
AUX-IN	—	●	●
SD card slot	—	●	●
Bluetooth connectivity	—	—	●
Comfort operation (auto up & down) for power windows	—	●	●
Remote control central-locking	—	●	●
Remote opening of boot lid by key remote	—	●	●
Opening and closing of windows with key remote	—	●	●
Outside rear view mirror, electrically adjustable	—	●	●
Multi-function Display (MFD) includes travelling time, distance travelled, digital speed display, average speed, speed-limit warning, fuel-efficiency, distance till empty, service interval, outside temperature and clock	—	●	●
'Climatronic' automatic air-conditioning	—	●	●
Speed sensing auto door locks	—	—	●
Co-driver's seat adjustment from rear seat for additional legroom	—	—	●
Multi-function steering wheel	—	—	●

○ Optional    ● Standard

Specifications and features are subject to change without prior notice.

## Warranty and Service

### Volkswagen Warranty

Our cars come with a standard warranty of 2 years/unlimited kms from the date of sale.

### Extended Warranty

An extension for a further 1 year/80,000 kms or 2 years/100,000 kms (whichever is earlier) is available at a minimal extra cost.

### 3-year Paint Warranty

The paint work is covered against manufacturing defects for a period up to 3 years from date of sale.

### 6-year Anti-corrosion Warranty

The high-quality steel used in the car body is covered against perforation for a period up to 6 years.

### Volkswagen Roadside Assistance

Provides registered vehicles with home and roadside recovery in the unlikely event of a breakdown or accident for a period of 2 years without any cost. Post expiration, you can extend this service at a minimal cost.

### Volkswagen Free Inspection Service

New cars are eligible for a complementary inspection service at 6 months or a running of 7,500 kms from date of sale, whichever is earlier.

### Volkswagen Finance

Whether private or commercial, you can choose from a range of customised financing solutions.

### Insurance

Competitive and comprehensive motor insurance, designed especially for Volkswagen customers, bundled with a bouquet of exclusive services are provided by our insurance partners.

### Our Network\*\*

- 106 cities
- 2 manufacturing facilities
- 126 dealerships across India
- 115 workshops across India
- 55 Das WeltAuto outlets across India
- 24x7 roadside assistance

### Further details for the Warranty

For any query, feedback or concerns, please contact your nearest Volkswagen authorised dealer or Volkswagen customer care on 1800-102-0909 or 1800-209-0909. And for Volkswagen Roadside Assistance, please call 1800-102-1155 or 1800-419-1155. 24x7. Anytime. Anywhere. Call us toll-free.

\*Terms and conditions apply.

\*\* As on March 2014.

Pictures used are for representation purposes only.

# The Vento

Volkswagen Group Sales India Private Limited

Produced in India

Subject to change without notice

Issue: March 2014

Internet: [www.volkswagen.co.in](http://www.volkswagen.co.in)

**Your Volkswagen Dealer**