

Designed for Joy

HYBRID ACCORD







ENJOY the finer things

Sporty, sophisticated and exclusively in hybrid, the Accord is joy at its finest. Crafted for those with a taste for more. Those who want to elevate every drive.

With Google built-in,^{D93} a first for Honda, all your favourite apps are available using just your voice. Make calls, set reminders, adjust the cabin temperature for a comfier ride and more. Just say, “Hey Google” to get started.

Pair that with intuitive tech like Honda Connect^{D52} and clever safety features like Honda SENSING^{D30} and it’s easy to see how the Accord elevates every drive.

The Honda Accord is joy at its finest.

D52 Vehicle related Honda Connect app features are only available if your vehicle is linked to your Honda Connect account and connected services are activated. Remote vehicle features vary by model and not all vehicles will have all features. **D30** Honda Sensing - Honda SENSING technologies are driver-assist technologies and should not be used in place of safe driving practices. Drivers should continue to monitor the road at all times. The accuracy and operation of Honda SENSING technologies may vary based on weather, speed, traffic, road conditions, markings and other factors. Refer to the owner’s manual for specific function and limitations. **D93** Google, Android, Google Play, Google Maps and other marks are trademarks of Google LLC. Google Built-In features require an internet connection, this can be performed through the vehicle with an active Honda Connect subscription.



Crafted for connoisseurs.

The Accord's exterior stands out with its perfect balance of sporty agility and sleek contours.

LED Headlights and Tail Lights

The Accord's lights do more than just shine. They make a statement. With LED sequential indicators, Adaptive Driving Beam, and Active Cornering Lights, seeing and being seen is a breeze. Plus, horizontal tail lights and blacked-out headlights add some subtle sophistication, day or night.

Distinctive Alloys

The sporty 18-inch Machined Matte Berlina Black alloys are inspired by the RS design.

Sporty Exterior

With a black RS body styling kit, including black mirrors, RS badging and a sleek lip spoiler, the Accord's sporty exterior details craft an aerodynamically refined silhouette.

Front Grille

The Accord's grille is flanked by air curtain inlets which help air flow smoothly around the front wheels, making the car more aerodynamic and efficient.



Blending comfort with sophistication, the Accord offers a refined space for the drivers who know exactly what they want.

Black Leather-Appointed^{D5} Seat Trim with Red Stitching

The Accord's Black Leather-Appointed^{D5} Seats with red stitching create a posture-supporting environment that's as comfy as it is captivating.

Panoramic Sunroof

Turn every journey into an open-air adventure, filling the cabin with sunlight and endless sky views.

Cockpit Design

The Accord's cockpit is a masterpiece of ergonomics and innovation, featuring a large Head-up Display, 12.3-inch Display Audio, and a 10.2-inch Driver Display.

^{D5} Leather-appointed means (1) some parts of the seats may contain non-leather materials and (2) some seats may contain no leather material.





RS
e:HEV

Equipped with Honda's latest e:HEV technology, the Accord combines a 2-litre Atkinson cycle engine with a dual-motor E-CVT electric drive unit, producing an impressive 135kW and 335Nm of torque.



The latest evolution of self-charging

HYBRID

e:HEV



Sustainability is central to the Accord, with electric motors and a smart generator that charges during highway drives. It automatically switches between three driving modes: EV, Hybrid and Engine Drive to optimise performance and efficiency, with a selectable 'E' button that lets you prioritise EV driving and charging if there is a sufficient level of Hybrid battery charge.

EV Drive

In EV Drive mode, the Accord Hybrid operates silently and efficiently, prioritising use of the electric motor for zero-emission driving. Ideal for cruising and stop start city traffic.

Hybrid Drive

Hybrid Drive mode harnesses the combined power of the engine and electric motor, delivering powerful, yet predictable acceleration when you need it, such as merging onto highways or overtaking.

Engine Drive

In Engine Drive mode, the petrol engine is used to directly deliver power to the front wheels for maximum efficiency, providing smooth power delivery during highway drives. All while the generator motor is charging the hybrid battery.

Now with Google built-in.^{D93}



Your favourite apps like Google Assistant, Google Maps and more on Google Play available right in your Honda Accord.

12.3-inch Display Audio

Experience unparalleled connectivity with the Accord's 12.3 inch Display Audio, now with Google built-in. Just say, "Hey Google" to navigate home, stream your favourite road trip jams, adjust the cabin temperature and more all hands-free for a seamless driving experience. The system is also compatible with Android Auto™ and Apple CarPlay®, allowing you to access your favourite smartphone features directly on the display.



D1 Apple CarPlay, iPhone and Siri are trademarks of Apple Inc. CarPlay and Siri requires iPhone 5 model and above running iOS 7.1 or higher. Some Google built-in features require an internet connection, this can be performed through the vehicle with an active Honda Connect subscription. For USB connections: Compatible Android phone and compatible active data plan required. For wireless connections: Wireless use of Android Auto requires a compatible Android 11.0+ phone and compatible active data plan. Check g.co/androidauto/requirements for compatibility.

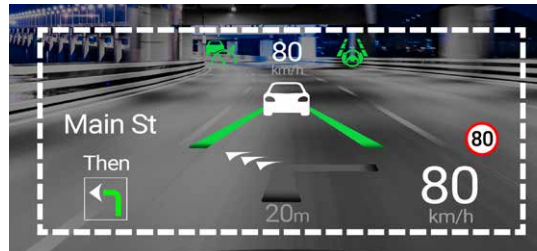


Effortless tech. Endless connections.



Bose®^{D41} 12 Speaker Sound System

Transform your cabin into a concert hall with the Bose® 12 Speaker Sound System, where Centerpoint technology ensures crystal-clear, surround-sound audio for every note of your journey.



Multifunction Head-up Display (HUD)

Essential driving information is projected directly onto the windshield, keeping you informed while minimising distractions and enhancing focus on the road.



Wireless Charging^{D75}

With the Accord's wireless charging pad, just place your smartphone down to recharge. No cables, no clutter, just easy power.

^{D41} Bose is a registered trademark of Bose Corporation.

^{D75} Feature only compatible with devices that support or can be upgraded to support wireless charging. Check the compatibility of your device with your device manufacturer.



Honda Connect.^{D52}

A first for the Accord. Honda Connect gives you and your family next-level telematics features that enhance safety, connectivity and convenience. Connect with Joy today!



Scan to learn more about Honda Connect.

Features include:



Remote Engine Immobiliser

Gives you the ability to remotely immobilise your car to give added theft protection.



Automatic Collision Detection^{D65}

In the event of airbag deployment, a notification will get sent promptly to the device logged into Honda Connect. The app will also alert a Honda Connect Customer Care agent.



Remote Lock/Unlock

Lock and unlock your Honda from anywhere using your smartphone.



Digital Key*

Allows you to operate the vehicle from your smartphone much the same as your key.



Remote Climate Control

Set temperatures in advance to keep you and your passengers comfortable from the moment you step inside.



Location Finder

Know exactly where your car is with our easy-to-use map.

*You must keep your physical key and mobile phone in the vehicle while driving. The engine will not start if your mobile device is out of battery, has no internet connection or is not inside the vehicle. **D52** Vehicle related Honda Connect app features are only available if your vehicle is linked to your Honda Connect account and connected services are activated. Remote vehicle features vary by model and not all vehicles will have all features. **D65** Automatic collision detection is unavailable where there is no telecommunications network coverage, and may be unavailable during system maintenance or unplanned interruptions. This feature should not be relied on in the event of an emergency.

Honda
CONNECT

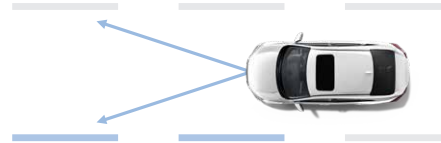


Honda SENSING^{D30}



Traffic Sign Recognition System.

Reminds you of certain road sign information such as the current speed limit your vehicle has just passed through, showing it on the gauge.



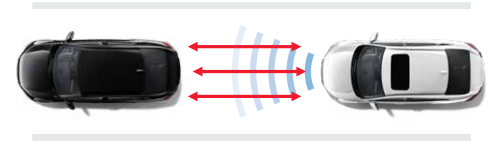
Traffic Jam Assist.

Works in conjunction with the Lane Keep Assist System (LKAS) to apply steering torque, keeping your vehicle centred in lane during heavy traffic.



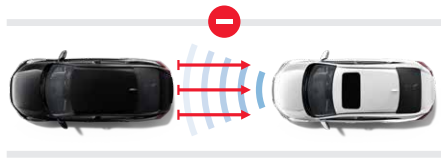
Lane Keeping Assist System (LKAS).

Provides steering input to help keep the vehicle in the middle of a detected lane and provides audible and visual alerts if the vehicle is detected drifting out of its lane.



Adaptive Cruise Control (ACC) with Low Speed Follow (LSF).

Helps maintain a constant vehicle speed and a set following interval behind a vehicle detected ahead of yours and, if the detected vehicle comes to a stop, can decelerate and stop your vehicle.



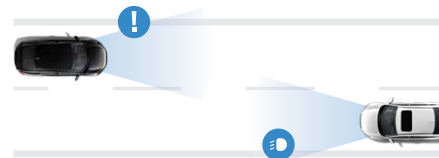
Collision Mitigation Braking System (CMBS).

CMBS is designed to alert you when a potential front collision is determined, as well as to reduce your vehicle speed to help minimise collision severity when a collision is deemed unavoidable.



Road Departure Mitigation System (RDM).

Alerts and helps to assist you when the system detects a possibility of your vehicle unintentionally crossing over detected lane markings, or approaching the outer edge of the road surface or a detected oncoming vehicle.



High-Beam Support System (HBSS).

Automatically changes your headlights from low to high on a clear road, and then back to low beam when an oncoming vehicle is detected.

D30 Honda SENSING technologies are driver-assist technologies and should not be used in place of safe driving practices. Drivers should continue to monitor the road at all times. The accuracy and operation of Honda SENSING technologies may vary based on weather, speed, traffic, road conditions, markings and other factors.

HONDA ACCORD 24YM



ENJOY the finer things

| Description | | e:HEV RS |
|----------------------------------------------------------------------------------------------|----------------------------------------------------------------------------------------------------------------------------------------------------------------------------------------------------------------------------------------------------------------------------------------------------------------------------------------------------------------------------------------------------------------------------------|-----------------|
| Powertrain | | |
| Engine type | Hybrid DOHC i-VTEC In line 4-cylinder | • |
| Engine capacity | | 2.0L - 1993cc |
| Compression ratio | | 13.9 |
| Bore x stroke (mm) | | 81 x 96.7 |
| Fuel type (minimum recommended) | unleaded (91 RON) | • |
| Fuel supply system | Honda Programmed Fuel Injection direct injection | • |
| Drive By Wire throttle (DBW) | | • |
| Transmission | | |
| Automatic | Electric Continuously Variable Transmission (E-CVT) with steering wheel-mounted deceleration paddle selectors | • |
| Performance and fuel economy | | |
| Maximum power (kW @ rpm) | | 135 @ 5000-8000 |
| Maximum torque (Nm @ rpm) | | 335 @ 0-2000 |
| Fuel consumption (litres/100km)* | combined | 4.3 |
| | urban | 2.4 |
| | extra urban | 5.4 |
| CO ₂ emissions (g/km)* | combined | 98 |
| Emission standard | ADR 79/04 (Euro 6b) | • |
| Chassis | | |
| Suspension | MacPherson strut (front) multi-link (rear) | • |
| Steering | Dual Pinion Motion Adaptive Electric Power Steering (MAEPS) | • |
| Brakes | variable gear ratio ventilated disc (front) solid disc (rear) | • |
| Stabiliser bars | front and rear | • |
| Exterior | | |
| Panoramic sunroof | | • |
| Shark Fin Antenna | black | • |
| Door handles | body coloured outer door handle illumination (front and rear) | • |
| Door mirrors | black electrically adjustable with integrated LED indicators reverse auto tilt down (passenger side) electrically retractable automatically retractable with key fob heating function hydrophilic | • |
| Black RS body styling kit | front, side and rear skirts | • |
| RS badge | front and rear | • |
| Blue accent Honda badge | front and rear | • |
| Spoiler | black lip spoiler (boot) | • |
| Front grille | black active shutter grille | • |
| Front bumper (lower) | black with silver painted side intakes | • |
| B & C Pillar finish | gloss black | • |
| Acoustic windshield | | • |
| Acoustic glass | front side doors | • |
| Rear window demister | | • |
| Wipers (front) | 2-speed & auto rain-sensing arm integrated washer nozzle | • |
| Wheel resonator | | • |
| Exterior lights | | |
| Headlights | LED headlight integration with wipers auto off coming home/leaving home function auto dusk-sensing height adjustment (auto) LED Active Cornering Lights (ACL) LED Daytime Running Lights (DRL) | • |
| Tail lights | LED | • |
| LED high-mounted brake light | | • |
| LED sequential turn signals | front rear | • |
| Driver aids | | |
| Drive mode select | Econ/Normal/Sport/Individual with Charge mode | • |
| EV switch | | • |
| Driver information interface with 10.2" LED colour display, featuring | Multi-function steering wheel-mounted controls odometer trip meter (A/B) instant fuel economy average fuel economy range average speed elapsed time rear seatbelt status outside temperature display power flow monitor audio map in meter with turn-by-turn directions* | • |
| Head-up Display (HUD) | Customisable Head-up Display | • |
| Comfort and convenience | | |
| Accessory power outlet (12v) | front | • |
| Wireless charger ⁰⁷⁵ | | • |
| Active Noise Control (ANC) | | • |
| Experience Selection Dial | | • |
| Climate control | Dual-zone climate control | • |
| Rear climate control vents | 2nd row vents | • |
| Driver's footrest | | • |
| Dust and pollen filter | | • |
| Electric parking brake with brake hold function | | • |
| Power windows | auto up/down function (driver and all passengers) key fob operation (all windows remote down with manual up) | • |
| Rear view mirror | auto-dimming | • |
| Remote keyless entry | | • |
| Smart keyless entry with push button start | | • |
| Remote Engine Start | | • |
| Remote boot release | | • |
| Sunvisor | with illuminated vanity mirror (driver & front passenger) extension mechanism (driver & front passenger) | • |
| Tilt and telescopic steering column | | • |
| One-touch turn signal | | • |
| Grab rails | x4 | • |
| Seating and interior | | |
| Interior ambient lighting | front & rear footwell ambient LED lighting front & rear door line illumination front dash line illumination centre console line light centre tray light meter line light | • |
| Interior lighting | LED map lights (front & rear) front door courtesy LED lights rear door courtesy LED lights cargo area light | • |
| Driver's seat | LED glovebox light 8-way power adjustment 4-way power lumbar support two-position memory fully reclining driver seat back | • |
| Front passenger's seat | 8-way power adjustable fully reclining seat back | • |
| Front seats | adjustable height head restraint | • |
| Rear seats | One motion single fold rear seats adjustable height head restraint (outer rear seats) | • |
| Seat trim material | black leather-appointed ¹ with red stitching | • |
| Leather-wrapped steering wheel | with red stitching | • |
| Leather-wrapped gear shift knob | | • |
| Alloy sports pedals | | • |
| Trim Accents | black leather-appointed ¹ dash, centre console (knee pads) and doors with red stitching | • |
| Trim Accents - centre console | 3D Silver Metallic pattern (film) | • |
| Roof Headliner | black | • |
| Storage | | |
| Beverage holders | x8 | • |
| Coat hook | x1 | • |
| Seat back pocket | front passenger seat driver seat | • |
| Front console (with 2 cup holders) | | • |
| Centre console storage | | • |
| Glovebox | with dampener | • |
| Cargo restraint hook | x2 | • |
| Sunglass holder | | • |
| Infotainment | | |
| Advanced Display Audio (12.3" touchscreen) featuring | Google built-in with Google Assistant, Google Maps and more on Google Play AM/FM radio Wireless Android Auto™ with Google Assistant [†] Wireless Apple CarPlay® with Siri® Eyes Free mode [‡] Bluetooth® connectivity with audio streaming [†] Digital Audio (DAB+) [†] Google built-in automatic app updates ⁰⁶² Over-The-Air system updates ⁰⁶² | • |
| USB connectivity | x4 USB C ports | • |
| Speakers | Bose® premium sound system with 12 speakers, including subwoofer ⁰⁶¹ Bose® Dynamic Speed Compensation ⁰⁶¹ | • |
| Active safety | | |
| Honda SENSING ⁰³⁹ featuring | Forward Collision Warning (FCW) Collision Mitigation Braking System (CMBS) Lane Departure Warning (LDW) Lane Keep Assist System (LKAS) Traffic Jam Assist (TJA) Traffic Sign Recognition System (TSR) Road Departure Mitigation System (RDM) Adaptive Cruise Control (ACC) with Low-Speed Follow (LSF) High Beam Support System (HBSS) Adaptive Driving Beam (ADB) | • |
| Blind Spot Information System (BSI) | | • |
| Anti-lock Braking System (ABS) | | • |
| Motion Management System | | • |
| Brake Assist System (BA) | | • |
| Electronic Brake-force Distribution (EBD) | | • |
| Emergency Stop Signal (ESS) | | • |
| Hill Start Assist (HSA) | | • |
| Driver Attention Monitor (DAM) | | • |
| Straight driving steering assist | | • |
| Vehicle Stability Assist (VSA) | | • |
| Tyre Pressure Monitoring System (TPMS) | | • |
| Acoustic Vehicle Alerting System (AVAS) | | • |
| Passive safety | | |
| SRS airbags (8) | dual front, side front, knee and full-length curtain driver front passenger side front (driver and front passenger) knee driver and front passenger full-length curtain | • |
| Advanced Compatibility Engineering (ACE) structure | | • |
| Child restraint anchorages | top tether (x3) ISOFIX (x2) (2nd row) | • |
| Child-proof rear door locks | | • |
| Head restraints | x5 | • |
| Seatbelt pretensioner | front and outer rear seats | • |
| Seatbelts (3-point) | Emergency Locking Retractors (ELR) - all seats height adjustable (front) | • |
| Seatbelt reminder | driver and all passengers | • |
| Rear seat reminder | | • |
| Side impact protection | | • |
| Pop-up hood | | • |
| Parking aids | | |
| Parking sensors | front x4 rear x4 | • |
| 360-degree Multiview Camera System (MVC) | | • |
| Rear Cross Traffic Alert (RTCA) | | • |
| Security | | |
| Engine immobiliser | | • |
| Security alarm system | | • |
| Automatic walk-away door locking | | • |
| Auto door lock | with speed or shift out of Park | • |
| Dimensions, weights and capacities | | |
| Overall length (mm) | | 4975 |
| Overall width (mm) | | 1862 |
| Overall height (mm) | | 1449 |
| Wheelbase (mm) | | 2830 |
| Track (mm) | front rear | 1591 1613 |
| Ground clearance (mm) | unladen | 134 |
| Minimum turning radius at wheel centre (m) | | 5.7 |
| Head room (mm) | front 2nd row | 960 928 |
| Leg room (mm) | front 2nd row | 1075 1037 |
| Shoulder room (mm) | front 2nd row | 1471 1436 |
| Hip room (mm) | front 2nd row | 1408 1408 |
| Tare mass (kg) | | 1585 |
| Kerb weight (kg) | | 1600 |
| Maximum permissible weight (kg) | | 2100 |
| Boot capacity (litres in VDA standard) | rear seat up | 570 |
| Seating capacity | | 5 |
| Fuel tank capacity (L) | | 48 |
| Wheels and tyres | | |
| Tyre size | | 235/45 R18 98W |
| Wheel type | alloy | • |
| Wheel size | | 18" |
| Wheel colour | Matte Berlina Black | • |
| Tyre repair kit (TRK) | | • |
| Tyre type | Michelin e-Primacy | • |
| Warranty | | |
| 5-year unlimited km warranty [†] | | • |
| 6-year rust perforation warranty | | • |
| 8-year IMA battery module warranty | | • |
| Servicing | | |
| 12 months/10,000km or when the engine oil monitor light illuminates* (whichever comes first) | | • |
| Telematics | | |
| Honda Connect ⁰⁶² | Inclusive 5-year Honda Connect ⁰⁶² subscription | • |
| Honda Connect ⁰⁶² featuring | remote climate control remote lock/unlock remote engine immobiliser remote lights/horn Automatic Collision Detection Light Collision notification Digital Key vehicle dashboard location search trip log/recent trip history geofencing alert push / recall notifications speed alert car status emergency call button car diagnostics subscription plan | • |

* The figures quoted are based on ADR81/02 combined test results. You may experience different results depending on driving conditions and the condition of the vehicle. †Google built-in features require an internet connection, this can be performed through the vehicle with an active Honda Connect subscription. ‡Feature only compatible with devices that support or can be upgraded to support wireless charging. Check the compatibility of your device with your device manufacturer. †Leather-appointed means (1) some parts of the seats may contain non-leather materials and (2) some seats may contain no leather material. ‡Requires Compatible Device. The Bluetooth word mark is owned by the Bluetooth SIG Inc. and use of such mark by Honda is under licence. Not all devices are compatible and functionality will vary depending on device. †Digital radio station coverage dependent on vehicle location. †Bose is a registered trademark of Bose Corporation. †Honda SENSING technologies are driver-assist technologies and should not be used in place of safe driving practices. Drivers should continue to monitor the road at all times. The accuracy and operation of Honda SENSING technologies may vary based on weather, speed, traffic, road conditions, markings and other factors. †5 year unlimited kilometre warranty available on all vehicles except those used for a Commercial Purpose, where a 5-year/140,000 kilometre (whichever occurs first) warranty is applicable. †Commercial Purpose" means the purpose of carrying passengers or goods in the course of business or trade, and includes, without limitation, a vehicle being used at any time, as a taxi, or for hire, rental, delivery, courier, ride sharing, driving school, tourist or security purposes. Please speak with your Centre or visit <https://www.honda.com.au/warranty> for full terms and conditions. †More frequent servicing may be required if vehicle is subjected to certain driving conditions. For more information visit <https://www.honda.com.au/owners/servicing>. †62 Honda Connect app features are only available if your vehicle is linked to your Honda Connect account and connected services are activated. Remote vehicle features vary by model and not all vehicles will have all features. Accurate as of April 2024.



Honda One Price Promise.

Your new Honda has the same price* no matter which Honda Centre you visit in your State or Territory.

Haggle free. That's our promise to you.

And for that extra peace of mind



5 Year Premium Roadside Assist



5 Low Price Services†



5 Year Unlimited KM Warranty†

Plus, 5-year Honda Connect^{DS2} subscription.



†5 year unlimited kilometre warranty available on all vehicles except those used for a Commercial Purpose, where a 5-year/140,000 kilometre (whichever occurs first) warranty is applicable. "Commercial Purpose" means the purpose of carrying passengers or goods in the course of business or trade, and includes, without limitation, a vehicle being used at any time, as a taxi, or for hire, rental, delivery, courier, ride sharing, driving school, tourist or security purposes. †Five Low Price Services applies to new Honda vehicles only. Ex-Demonstrator or ex-service vehicles receive three low price services. To find out more about what's included refer to your Owner's Warranty and Service Manual. Visit Honda.com.au for T&Cs. **D52** Some Honda Connect app features are only available if your vehicle is linked to your Honda Connect account and connected services are activated. Remote vehicle features vary by model and not all vehicles will have all features. *The estimated driveaway price is based on the State/Territory. It includes metallic/pearlescent paint (where applicable), 12 months registration, 12 months compulsory third party insurance (CTP), a recommended Honda Centre delivery charge, stamp duty and administration charges, but excludes any reduction as a result of concession entitlements. An additional Cross Border Delivery fee and any resulting additional government charges will apply if you choose a vehicle with a specific colour and grade or an accessory that has to be delivered from another State or Territory. We recommend confirming pricing with your Honda Centre. Honda Australia may change vehicle pricing at any time.



Honda Finance made easy.

At Honda, we believe getting auto finance pre-approval shouldn't require a complicated process, or only be available at Honda Centres. That's why we've made it easy.

With Honda Finance, now you can get your pre-approval online in just 4 steps.*^

No paperwork and no impact on your credit score. Nice and simple.



**Honda
Financial Services**

^Loan products are issued, distributed and offered by Taurus Finance Holdings Pty Ltd ("Taurus") ABN 78 625 555 464 Australian credit licence 514213. Honda Australia Pty Ltd ("Honda Australia") ABN 66 004 759 611 and its sales agents promote the loan products under agreements with Taurus [and may receive administration fees or commissions in relation to loans]. Honda Financial Services is a registered trademark of Honda Motor Co., Ltd ("Honda") and Taurus holds a sub-licence to use that trademark. *For eligible applicants.



1800 804 954 honda.com.au/cars    /HondaAustralia



The **Honda** Foundation

Every Honda vehicle purchased helps raise money for The Honda Foundation, that's contributed over \$14 million back into the Australian community to date. Visit thehondafoundation.com.au

Honda Australia Pty Ltd. LMCT 4136 (Vic), License Number MD28946 (WA), License Number 6118 (Tas), Level 4, 6 Gladstone Street, Moonee Ponds, Victoria, 3039 ACN 004 759 611 ABN 66 004 759 611. The specifications and major features listed here apply to the 24YM Accord model and are accurate as at the date of printing (March 2024). However, Honda Australia Pty Ltd. reserves the right to change or modify specifications and major features at any time without prior notice. Due to ordering, shipping and freight factors, some colour, model, option and accessory availability may vary from time to time. Check with your Honda Centre for current information. 24YM Accord e:HEV RS in Platinum White (Pearlescent) shown on cover. Displayed paint and trim colours are indicative only and may vary from actual. Check with your Honda Centre for stock and colour availability. HOD-8183-10