



G I G I 220



# MINI EV



## Acceleration

0-50km/h  
acceleration 5.2s



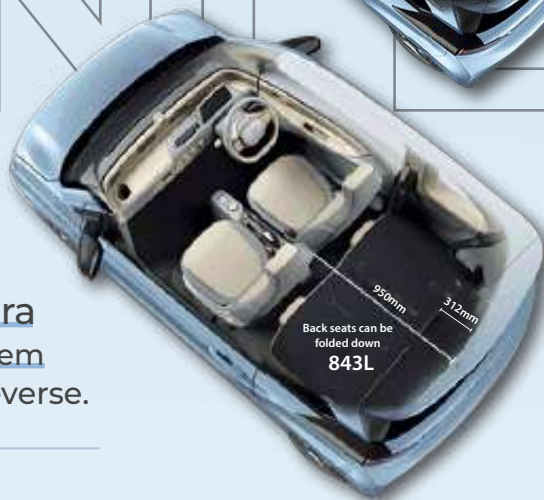
## LIGHT

Mini size with flexible interior  
light life with intelligent system

Light electric vehicle for young people



# MINI



**Rear View Camera**  
 RADAR distance system  
 It's easy to park & reverse.

**843 Large Rear Space**  
 Can fit all your belongings



**Compact Appearance**  
 Smart Handling



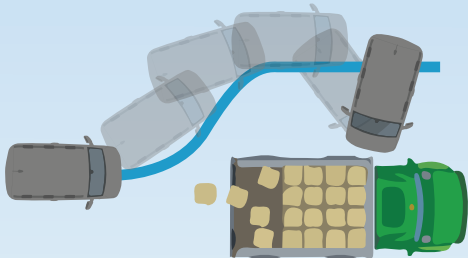
**It can be folded down by 5:5**  
 Flexible back seats makes you enjoy comfortable



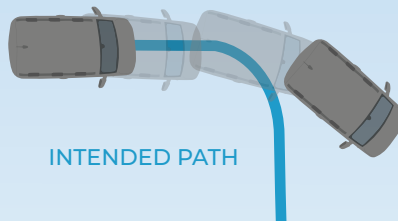
**Functional Steering Wheel**  
 Multimedia, Cruise Control, Limit

## ESC (Electronic Stability Control)

**Helps Prevent:**



Oversteering



Understeering

**Rollovers**

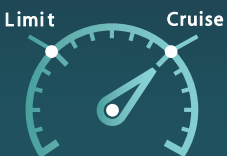
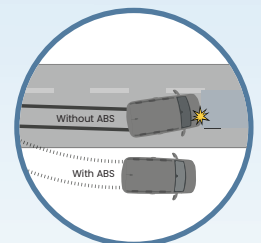
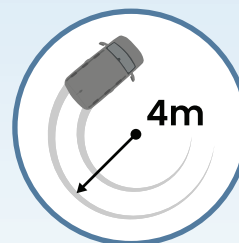


## ABS + EBD

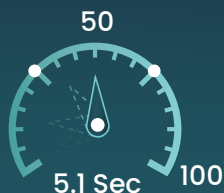
# Easy Ride

so light

Mini size with flexible interior, light life with intelligent system



Cruise/Limit



Acceleration

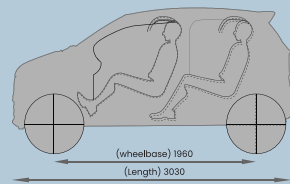
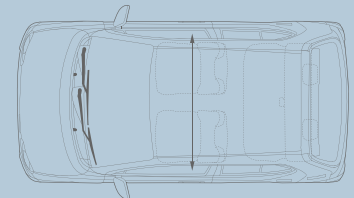
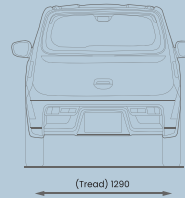
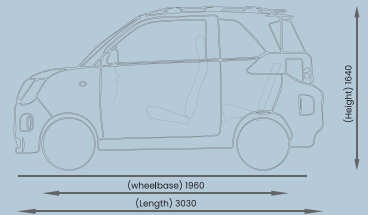
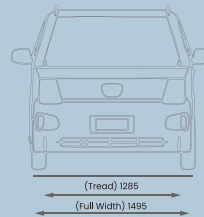




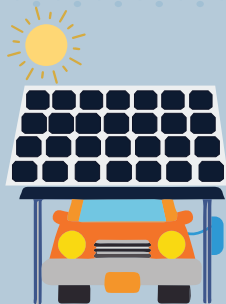
# SO Light

## Dimensions:

Unit: mm



**0** Opex  
5kw Solar charging  
Parking shed (Optional)



## Colours



Black



Gray



White



Blue



Pink



Green

# Specifications: ||

<b>Electric/ battery</b>		
Motor/ controller	Permanent magnetic synchronous machine	
Motor Power/ Max Torque	30 kw (40HP) / 100 N.m	
Battery type/ Capacity	Lithium iron phosphate battery/ 16.8 kwhr( 112VDC)	
Charging power/ rate	3.3 ( 4-5 hr) - 40km/hr	
NEDC range/ Max. speed	220 km/ 100 km per hr	
Transmission type	Automatic	
Regenerative sliding	●	
<b>Chassis</b>		
Power steering system	EPS	
Driving type	Rear Wheel Drive	
Wheel	Aluminum Alloy wheel 145/60 R13	
Suspension	Front: MacPherson independent suspension Rear: Multi-link non-independent suspension	
<b>Safety Configuration</b>		
Air bag	(1, driver's seat)	
Power cut protection in collision	●	
Safety belt/ Safety belt warning	4, Alarm	
Child seat connector	ISOFIX, 2, middle row on both sides	
	●	
ABS + EBD	Electronic breaking	●
ESP/ESC	Electronic Stability control	●
EBA/BAS/BA	Emergency Brake	●
ASR/TCS/TEC	ANti skid/ Traction control	●
ARB	Anti roll bar	●
EDR	Electronic data recorder	●
Auto-hold brake		●
Reverse camera		●
TPM	Tire pressure monitoring system	Font-Rear
Parking rader		●
Anti-theft	With remote control (3 doors), automatic locking, collision unlocking	
Central locking	1 remote key, 1 mechanical key	
Remote key	(LED, integrated in front combination headlights)	
<b>Internal Configuration</b>		
Sun visor	Double visor, white, PVC, driver's seat with make-up mirror	
Steering Wheel	Multifunctional steering wheel	
Grill, Bumper, Door outer handle colour	same with car body	
Odometer	7 inches LED instrument, gray base, highlight black shell	
Climate control	Touch control air cooling / heating	
Window Glass/ Regulator	Green glass (whole vehicle)/ Automatic	
Outer mirror electronic adjust	Automatic	
<b>Light configuration</b>		
Front lamp	Halogen, bifocal lens: Head lamps LED: Parking, Indicators, Day time lights, front grill	
Rear combination lamp	Helogen: Parking, turn signals, Lower & upper brake light with reflector	
Rear fog lamp, Reverse light / side lights	Fog light- left, Reversing light- right/ turn indicators	
<b>Tech &amp; Media Configuration</b>		
PEPS	PS	
Cruise control	●	
Electronic shift/ Mode	Economy-SPORT	
Infotainment system	8.8 inches MPS	
Speaker	2	
USB connector	(2)	
<b>New Energy Vehicle Configuration</b>		
On board AC charging	●	
Charging Cable	●	
Charging status display	●	
Power management display	●	
Charging port cover open reminder	●	
Power system anti theft	●	
High voltage safety monitor	●	
pedestrian alarm at low speed	●	
Battery system heating management	●	
Smart charging 12V	●	

\*specs subject to change without notice