

PROBE

1996 Edition 1

The 1996
Ford
Probe
range





BY APPOINTMENT TO
HER MAJESTY THE QUEEN
SPECIALIST MOTOR MANUFACTURERS
FOR THE ROYAL FLEET LIMITED
SINCE 1922



BY APPOINTMENT TO
HER MAJESTY THE QUEEN
SPECIALIST MOTOR MANUFACTURERS
FOR THE ROYAL FLEET LIMITED
SINCE 1922



BY APPOINTMENT TO
HER MAJESTY THE QUEEN
SPECIALIST MOTOR MANUFACTURERS
FOR THE ROYAL FLEET LIMITED
SINCE 1922



BY APPOINTMENT TO
HER MAJESTY THE QUEEN
SPECIALIST MOTOR MANUFACTURERS
FOR THE ROYAL FLEET LIMITED
SINCE 1922

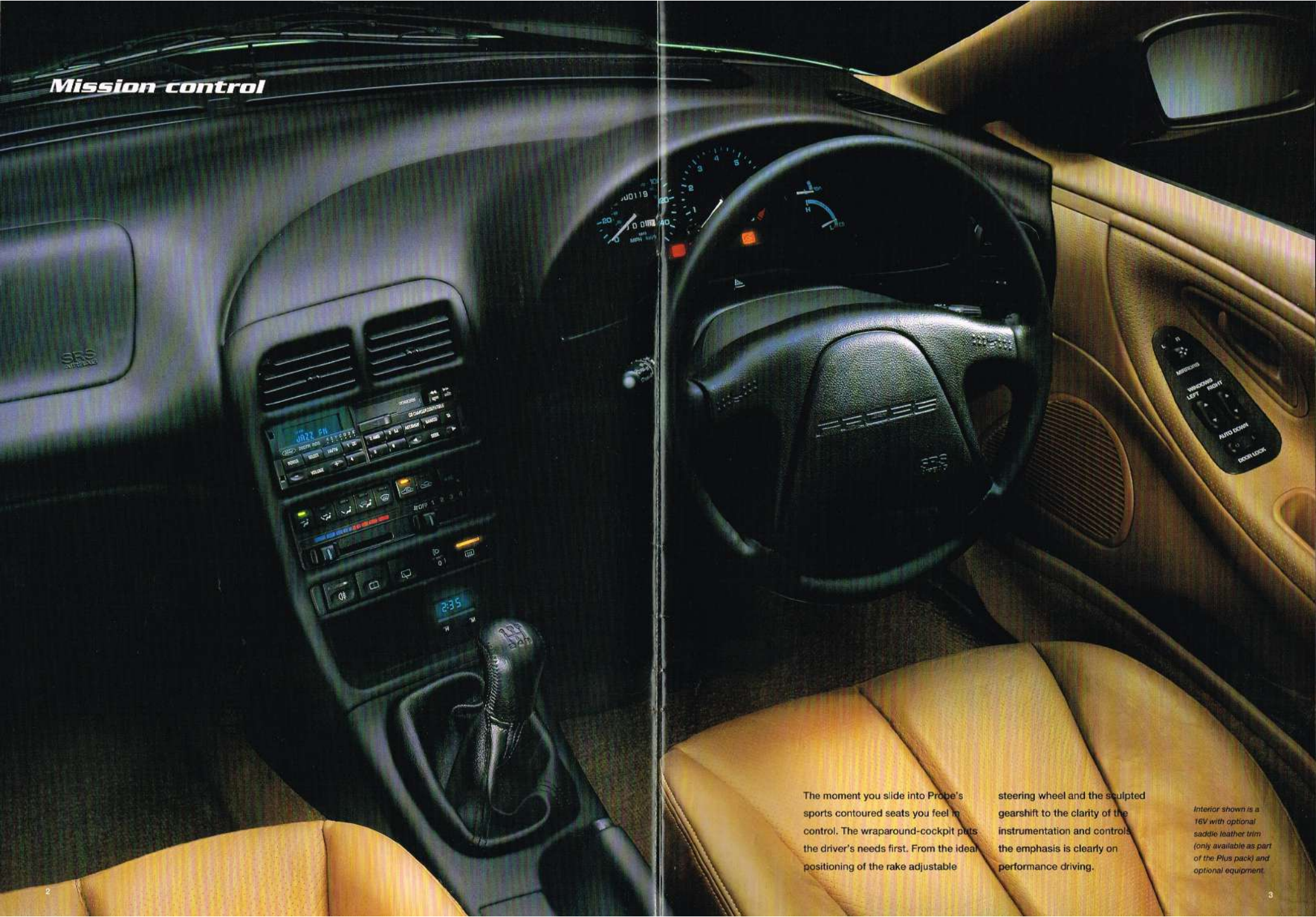
Introduction	1
Mission control	2
Pure symmetry	4
A touch of class	6
Personal space	8
Safety first	10
Inspired lines	12
Heart of the machine	14
Specifications	16
Optional Accessories	19
Ford Audio Systems	20
Ford Cellular Systems	20
Ford and Ford Credit Services	21
Colour and Trim	22
The Ford Range	23

PROBE

Head turning good looks, stirring 24V performance and breathtaking handling combine to make this real sports coupé as much fun to drive as it is beautiful to look at.



Mission control



The moment you slide into Probe's sports contoured seats you feel in control. The wraparound-cockpit puts the driver's needs first. From the ideal positioning of the rake adjustable

steering wheel and the sculpted gearshift to the clarity of the instrumentation and controls the emphasis is clearly on performance driving.

Interior shown is a 16V with optional saddle leather trim (only available as part of the Plus pack) and optional equipment.

Pure symmetry

Riding on sports tuned independent suspension Probe strikes an impressive balance between grip and ride comfort with a reassuring sense

of road feel. The steering is precise, sharp and responsive empowering you to put it through its paces with confidence inspiring predictability.



*Model shown is 24V
in Boysenberry.*

A touch of class

Whether you favour the classic leather interior (optional on both 24V and 16V models) and colour matched carpeting or the two toned fabric finish, Probe is a sports coupé that successfully combines luxury with performance. Other concessions made in the name of luxury include electric windows and sunroof, cruise control (24V only) and a top quality stereo radio /cassette.

Interior shown is a 16V with optional saddle leather trim (only available as part of the Plus pack) and optional equipment.

Personal space

The flexibility of Probe's sports seats allows you to select a driving position that precisely matches your physique. Both the drivers side bolster and lumbar support can be electrically adjusted to ensure that you are held in your favourite driving position, while seat height adjustment gives you a commanding view of the road.



Retractable headlights conveniently retract when not in use for added protection.



Electrically-operated and heated door mirrors minimise misting in bad weather.



Electrically-operated sliding sunroof to take advantage of sunshine and fresh air.



Seat adjustment controls ensure the most comfortable position.

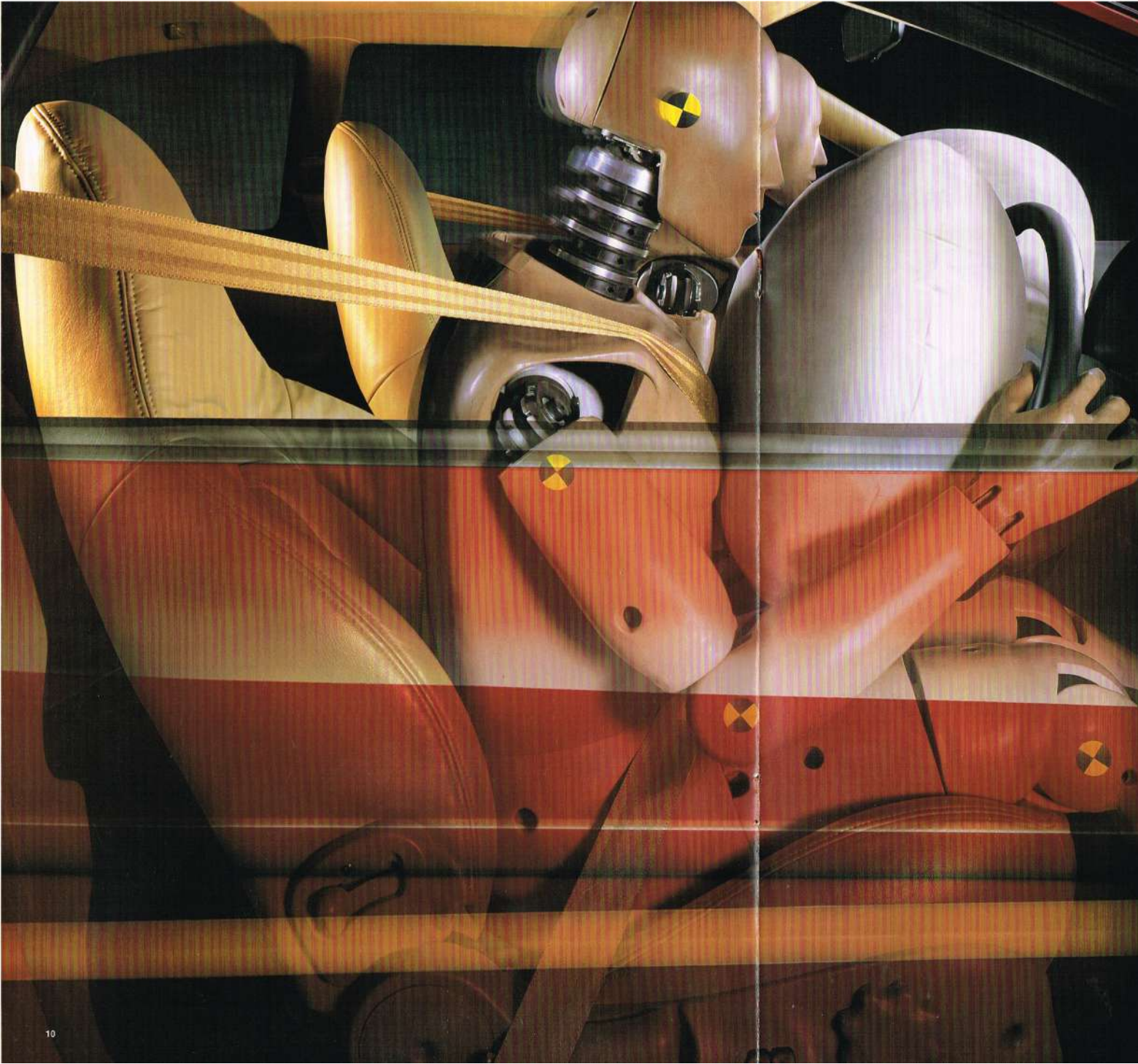


Chrome finished tail pipes add to the car's overall good looks. (24V only)



The rear seat splits 50/50 for added luggage capacity.





Safety first

As with all Ford vehicles, occupant safety has the highest priority in the Probe's design – a product of Ford's Dynamic Safety Engineering (DSE) programme. DSE is designed to help drivers avoid accidents in the first place and to help reduce the risk of serious injuries to occupants in the event of collision.

As you would expect of a stylish sports coupé your safety is a top priority. Probe is equipped, as standard, with electronic anti-lock braking to help retain steering control even under severe braking. In addition to the full size driver's side airbag there is a front passenger airbag too both designed to react in the blinking of an eye. Completing Probe's Supplementary Restraint System are four inertia reel lap and diagonal seats belts. Under the skin protection is provided by an inner steel safety cage, integral side impact beams together with specially designed crumple zones offering both protection and assistance in dissipating shock in the event of an impact.

A car as attractive as Probe unfortunately may well attract more than just admiring glances. To help resist unwanted attention we have incorporated a comprehensive range of anti-theft deterrents. Beginning with an engine immobiliser that once activated will deter any uninvited driver from start-up and an alarm system that will be triggered should anyone tamper with the doors, bonnet or boot. This is further supported with central door locking designed to fend off the most determined of opportunist thieves. And the attractive alloy wheels come with locking wheel nuts to add to the car's all round protection.

Inspired lines



*Model shown is a 16V
in Alpine Green*

Both the 24V and the 16V model share the same distinct, purposeful lines. While the aerodynamic body cuts through the air with minimal

resistance, the exhilarating power is successfully married to assured handling to give you a driving experience beyond your expectations.

This is a car designed to traditional sports coupé values. Now available in a distinctive new range of colours and a choice of interior finishes both the

24V and 16V coupé are truly as individual as you are.



Heart of the machine

A light touch on the throttle and the engine purrs with a deep note of contentment. The silky close ratio gearing translates the power into a seamless, satisfying stream of acceleration. And as becomes a true sports coupé the engine has plenty of torque and pulling power above 4000 rpm. The gearing provides the driver with a rich even powerband that is ideal for both overtaking and motorway cruising. Hi-tech, high performance and highly responsive both the 24V and 16V

powertrains continue the sporting tradition of the sports coupé in the most impressive manner.

Driving dynamics are further enhanced with an independent suspension that has been sports rated, making Probe a well-mannered sports coupé that is both rewarding and exciting to drive. Probe's road-holding characteristics are further enhanced with low profile, wide stance radial tyres that ensure responsive handling.



The Probe pictured uses the 2.5 litre 24V Probe engine. It has been considerably re-engineered to meet the restriction associated with this gruelling type of road racing.

As befits a sports coupé both the 24V and 16V come with their own distinctive alloys wheels with locking nuts.



The 16 valve, DOHC, multi-point fuel injected engine with 85kW (115PS) at 5,500 rpm and a torque of 170Nm at 4,500rpm.



Probe specifications

Model availability

& Weights and Loads (see key opposite)

3-door Probe	Kerbweights (kg) ¹ *	Gross Vehicle Mass (GVW) (kg)	Max. towing limit at GVW (kg)
2.0i 16V	1215	1620	1620
2.5i 24V	1280	1690	1690

* Represents the lightest kerbweight assuming full fluid levels and fuel levels, subject to manufacturing tolerances and options, etc., fitted.

Dimensions

Exterior (mm)

A Overall length	4585
B Wheelbase	2610
C Overall width with mirrors	1780
D Unladen height – 16V	1310
D Unladen height – 24V	1315

Interior (mm)

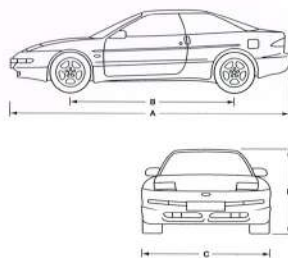
Front	
Effective headroom	959
Max effective leg room	1094
Shoulder room	1320

Rear	
Effective headroom	884
Min effective leg room	725
Shoulder room	1368

Stowable luggage (cu m)¹

4-seat mode	0.396
2-seat mode (laden to roof)	1.00

¹ Measured using the VDA Method. Dimensions may vary dependent on the model and equipment fitted.



Insurance groups

Probe 16V	16
Probe 24V	17

For details see back cover.

Engine data

Engine technical features	Maximum power*	Maximum torque*
2.0i DOHC 16V (Catalyst) 1991 cc Cylinders – 4 in-line ■ Electronic fuel injection ■ Electronic breakerless ignition	85 kW (115 PS) at 5600 min ⁻¹ (rpm)	170 Nm at 4800 min ⁻¹ (rpm)
2.5i DOHC 24V (Catalyst) 2497 cc Cylinders – V6 ■ Electronic fuel injection ■ Electronic breakerless ignition	121 kW (163 PS) at 5600 min ⁻¹ (rpm)	217 Nm at 4800 min ⁻¹ (rpm)

* Tested in accordance with DIN 70020

Key:

This table shows the availability of engine and gearbox combinations on Probe models and their resulting kerbweights.

Note:

All vehicles are 5-speed. All petrol engines are equipped with a Catalytic Converter.

Towing limits

quoted in this catalogue represent the maximum towing ability of the vehicle at its Gross Vehicle Mass to restart on an 8 per cent gradient at sea level. The performance and economy of all models will be reduced when used for towing. For further guidance, refer to the National Caravan Council's Towing Code.

Roof rack load is a maximum of 100kg on all models.

Fuel and performance

3-door Probe	Fuel consumption in L/100km (mpg) ¹ Simulated urban driving	Constant 56 mph (90 km/h)	Constant 75 mph (120 km/h)	Performance (Ford test figs.) Max. speed mph 0-60 mph (secs)
2.0i 16V	9.8 (28.8)	6.0 (47.1)	7.9 (35.8)	127 10.6
2.5i 24V	11.9 (23.7)	7.2 (39.2)	8.9 (31.7)	137 8.5

¹ All figures in L/100km (mpg) are from officially approved tests under the Passenger Car Fuel Consumption Order 1983.

The fuel consumption test figures shown in the chart do not express or imply any guarantee of the fuel consumption of a car of the class in question. See back cover.

Note All vehicles are 5-speed. All petrol engines are equipped with a Catalytic Converter.

Mechanical features

	16V	24V
Brakes		
Diagonally-split, with dual-line servo-assistance	■	■
Ventilated front discs and rear discs	■	■
Anti-lock – Electronically-controlled	■	■
Fuel tank		
58.5 litres	■	■
Fuel cut-off – Inertia switch	■	■
Steering		
Power-assisted rack-and-pinion (speed sensitive)	■	■
Suspension and Body		
Front – MacPherson struts, anti-roll bar, triangulated lower track control arms	■	■
Rear – Quadralink independent, anti-roll bar	■	■
Side impact door beams. Steel safety cage	■	■
Turning circle		
Kerb to kerb 10.9m	■	■

Exterior features

	16V	24V
Exterior Appearance and Styling		
Bodyside mouldings – Body colour	■	■
Bodyside cladding – Body colour	■	■
Exhaust trim – Bright Chrome finish	■	■
Wheelguards – In rear arches	■	■
Wheels – 6x15 3-spoke Alloy ('space-saver' spare) with 205/55 x 15 tyres	■	■
Wheels – 7x16 5-spoke Alloy ('space-saver' spare) with 225/50 x 16 tyres	■	■
Exterior Functional		
Alarm – Perimeter	■	■
Door mirrors – Electrically-operated and heated with body colour housings	■	■
Fuel flap – Remote release	■	■
Heated rear window	■	■
Immobiliser	■	■
Locking wheel nuts	■	■
Locks – Anti-burst	■	■
Locks – Central locking	■	■

Probe specifications

Exterior features

	16V	24V
Exterior Functional (continued)		
Tinted glass	■	■
Vehicle Identification Number (VIN) – Visible	■	■
Wipers – Front, two-speed plus intermittent with electric wash	■	■
Wipers – Front, variable interval intermittent wipe	■	■
Wipers – Tailgate wiper, with electric wash	■	■
Exterior Lighting		
Halogen headlights, side lights, rear fog light, reversing light	■	■
Headlights – Retractable, motorised levelling	■	■
Driving lights – Long-range	■	■

Interior features

	16V	24V
Audio		
Stereo Radio/Cassette – Model 2006R RDS EON with removable control panel, 'Keycode' anti-theft coding, 4 speakers	■	■
Stereo Radio/Cassette – Model 2007R RDS EON with removable control panel, remote power amplifier and 4 x 20W output, 'Keycode' anti-theft coding, 4 speakers	■	■
Aerial – Rear, offside wing-mounted, electrically-operated	■	■
Carpet and Trim		
Door bins – Carpet covered	■	■
Gearlever knob – Leather covered	■	■
Lighting		
Courtesy light – Header-mounted, door-operated, 'fade-off' function	■	■
Light – Luggage compartment	■	■
Reading light and illuminated entry system	■	■
Instruments and Controls		
Instruments – Speedometer, odometer, oil pressure gauge, voltmeter, fuel gauge, water temperature gauge	■	■
Tachometer	■	■
Cruise control	■	■
Warning indicators – Oil pressure, voltage, low fuel, low washer fluid, tailgate open, door/tailgate ajar warning, 'lights on' audible warning	■	■
Illuminated heater controls – 4-speed fan. Four vents with temperature and direction control, two dedicated side window demists	■	■
Control stalks – Column-mounted for master lights, indicators and wash/wipe functions	■	■
Steering column – Rake adjustable	■	■
Airbag – Driver's	■	■
Airbag – Front passenger's	■	■
Steering wheel – Four-spoke (leather-trimmed on 24V) incorporating horn function	■	■
Seats and Seat Belts For seat fabric see page 23		
Front seat – Driver's, electrically-operated lumbar and side bolster adjust, manual height adjust	■	■
Front seats – Sports, fully reclining with head restraints	■	■
Front seats – Forward tilting with return memory	■	■
Storage pocket – Front passenger seat back	■	■
Rear seat – 50:50 split back	■	■
Seat belts – Front and rear inertia reel lap and diagonal (4)	■	■
Comfort and Convenience		
Accessory socket/cigar lighter	■	■
Centre console – With storage bin, ashtray and trinket tray	■	■
Clock – Digital, quartz	■	■
Driver's left footrest	■	■
Glovebox – With lid, illumination and lock	■	■
Mirror – Dipping rear view	■	■
Mirrors – Driver's and front passenger's sunvisors with illumination	■	■



EXTRA COVER

New Maintenance Plans

Your Ford Dealer can advise you on extended warranties. Extra Cover, the optional extended warranty from Ford now incorporates Service Cover, allowing you to add routine servicing or full maintenance cover to your plan.

24 Months/18,000 miles
24 Months/24,000 miles
24 Months/36,000 miles
24 Months/unlimited miles*
36 Months/24,000 miles
36 Months/36,000 miles
36 Months/60,000 miles

Note:

- The timescale for the Warranty Plans is from the date of Warranty commencement and continues until the completion of the time or mileage allowance, whichever occurs first.
- Extra Cover can be purchased up to 12 months after the date of vehicle Warranty commencement, but still starts from the date the vehicle was registered.
- Service Cover can be purchased up to 2 months after the date of vehicle Warranty commencement.

Interior features

	16V	24V
Comfort and Convenience (continued)		
Storage – Facia, passenger's upper	■	■
Sunroof – Electrically-operated, sliding	■	■
Tailgate release – Remote	■	■
Windows – Front, electrically-operated, with one-shot lowering on driver's side	■	■
Luggage Compartment		
Polyester mat	■	■
Rear seat backs – Carpeted	■	■
Luggage net	■	■

Options

at extra cost

	16V	24V
Equipment		
Air-conditioning – CFC-free	■	■
Ford Compact phone (no charge) [†]	■	■
Plus Pack – 2007R RDS EON radio/cassette, leather front seat facings and 'leather-effect' rear seats, leather-trimmed steering wheel, leather-covered gearlever knob, reading light and illuminated entry system	■	■
Seats – Leather facings on front seats and 'leather-effect' rear seats	■	■
Body Colour		
Paint – Metallic	■	■

[†] Subject to status and the signing of a 12 month airline contract. The contract may be terminated by giving 30 days written notice after the end of the 12 month period. Available in conjunction with the purchase in the UK of a new Ford vehicle (excluding the Channel Islands and Isle of Man, named daily rental companies (Avis, Hertz, Budget, Eurocar, Euro Dollar, Flightrom, Thrifty and their licensees/agents and Daily Rental), Ford and Dealer demonstrator programme vehicles, FRCS/Service rental vehicles, direct service vehicles).

Optional Accessories



These mud flaps are fitted to the front wheel arches and help to prevent mud, water and stones from damaging the paintwork on either side of the car.



The tow bar has been robustly designed for towing heavy loads, such as caravans, boats and trailers.



The floor mats are easy to remove and clean and are ideal for protecting the floor against the effects of mud and water.



Ford car care products have been developed specifically for Ford vehicles. They clean and protect, and are biodegradable.

For further information on the full range of accessories available for your vehicle please contact your local Ford Dealer.

Ford Audio Systems

Ford are one of the largest vehicle audio manufacturers in the world with dedicated research, development and manufacturing facilities in Europe, producing high quality sound systems to suit your needs.

By investing in state of the art electronic testing equipment, Ford have the ability to design a sound system specifically to complement each vehicle, ensuring that all its component parts are precisely matched to optimise the listening experience.

Audio systems equipped with an RDS or RDS EON decoder pick up inaudible signals transmitted on the FM waveband to provide station name display, automatic re-tuning and up to the minute traffic information.

The 2006R and 2007R audio systems have a unique 4 digit Keycode and a removable control panel for additional security.

Upgrade flexibility

A wide variety of audio options is offered as Dealer or factory fit. This gives you the flexibility to upgrade the standard system in your vehicle. For further details on the Upgrade programme please consult your Ford Dealer.

2006R RDS EON Stereo Radio/Cassette with removable control panel.



2007R RDS EON Stereo Radio/Cassette with remote power amplifier and removable control panel, standard on the 24V.

Ford Cellular Systems



Motorola Micro Tac II. This heavyweight performer weighs in at a lightweight 225 grams. Offers a 99 number memory with name labelling.



The Compact II features two unique keys giving one touch access to the Ford Call Careline and to the Ford/RAC Control Centre.

Ford is the world's only vehicle manufacturer to offer its customers the benefits of a totally integrated mobile communications service. Whether you require reassurance and security at an affordable cost or the very latest state of the art digital technology, you can rely on the expertise and value offered by Ford's mobile communications specialists.

Backed by dedicated customer services personnel, a team of technical support specialists and the ability to bill you direct, Ford Cellular can meet all your communication needs with an open, fair contract and the most flexible and competitive line rental and call tariffs available. For more information contact your Ford Dealer or Ford Cellular Systems direct on **0345 91 92 93**.

Ford Phone Compact II

The newcomer to the Ford Cellular range was specifically designed for our customers in partnership with Motorola, the world's leading cellular manufacturer. With two unique one touch keys connecting you directly to either the Ford Call Careline or the RAC Control Centre, the Compact II has been created with security, quality of service and value for money in mind.

The latest Ford model shows signal strength with accuracy, a permanently displayed battery gauge and has a ten memory capacity; enough for those important and often used personal numbers. For business tariff customers the Compact II is available in a hi-tier version. This includes additional features such as a 50 number alpha-numeric memory and a built-in rapid battery charger.

Ford and Ford Credit Services

We have established a dedicated range of services that meets the needs of both business and private motorists. Each service has been specifically tailored to provide you with expert help and advice. So, whether you're in the process of buying a new car, acquiring parts and accessories or simply organising a routine service, you'll find our network of over 1000 Dealerships are there to make your life easier.



EXTRA COVER

Ford Aftercare Services Call free on 0800 111 222

Every new Ford car is covered by a 12 month, unlimited mileage Warranty. This can be further enhanced for one or two years by Ford Extra Cover – the Ford Optional Extended Warranty Plan.

The bodywork of all Ford cars is covered against corrosion for 12 months and against perforation caused by faulty manufacture or materials for six years.

The Ford Commitment

Ford Commitment gives you complete protection for your new vehicle and is valid for 12 months from the date of registration.

The benefits include a replacement or refund scheme, 24 hour RAC UK and European Roadside Assistance and the Ford Customer Assistance Centre Helpline.

For terms and conditions of this scheme please call free on 0800 111 222 or contact your Ford Dealer.

Customer Order Price Protection Plan Call free on 0800 111 222

The price on your order is guaranteed for 3 months from the date of your order.

Rapid Fit

Call free on 0800 22 44 44

Rapid Fit offers you the convenience of a "no-appointment necessary, while-you-wait" service for routine maintenance work.

Tax Free Sales

Call 01932 335 113

Most cars in the Ford range are available for Tax Free Personal Export.



Ford Credit

Call free on 0800 111 222

Ford Credit finances every second new Ford car sold in Britain.

Options

Options

Call 0345 125 756

Options is an innovative way for customers to drive a new Ford more often for less than you thought possible.



Ford Acumen

Call 0345 166 166

Ford Acumen Personal Leasing Plan is the intelligent way to drive a new Ford more often. An innovative personal leasing plan provides you with a way to drive a new Ford every two years (subject to status).



Ford Contract Motoring

Call 01923 476 300

Combining the benefits of contract hire with a national service network.



Ford MotorQuote

Call 0345 585 119

MotorQuote car insurance service offers Ford customers a guaranteed quotation at an affordable price.

Value Guaranteed Insurance

Call free on 0800 111 222

Value Guaranteed Insurance (VGI) is a new insurance product from Ford Credit which gives motorists added protection.



Motability

Call free on 0800 111 222

Ford is fully committed to the needs of the disabled, and their carers, through the Motability programme.

There are terms and conditions applicable to all these programmes. For further details, clarification or copies of literature available please call the telephone numbers detailed. Finance is provided subject to status to over 18s only. Written quotations are available on request from Ford Credit Europe plc, PO Box 46, Brentwood, Essex, CM13 3AR. Guarantees and Indemnities may be required. Certain categories of business user do not qualify for the Options or Ford Acumen plan.

Body Colours



Vibrant White



Rio Red



Ebony Black



Grey Green



Chamelaur



Seafoam Green



Boysenberry



Alpine Green



Laser Tint Red

Interior Trims



Autumn Ebony



Saddle leather trim **

Body Colour and trim availability

Model	Seat fabric	Solid Body Colours				Metallic Body Colours (Extra Cost)				
		Vibrant White	Rio Red	Ebony Black	Grey Green	Chamelaur	Seafoam Green	Boysenberry	Alpine Green	Laser Tint Red
16V	Autumn	E	E	E	E	E	E	E	E	E
	Leather**	S	S	S	S	S	S	S	S	S
24V	Autumn	E	E	E	E	E	E	E	E	E
	Leather**	S	S	S	S	S	S	S	S	S

**Leather trim is optional, at extra cost. Only available on 16V as part of the optional Plus Pack, also at extra cost.

SEAT FABRIC
COLOUR KEY:
E – EBONY
S – SADDLE*

Note:
The car images used are to illustrate body colours only and may not reflect current specification.

Colours and trims reproduced on this page may vary from the actual colours due to the limitations of printing processes used.

The Ford Range

In addition to the new Probe, there's a comprehensive range of vehicles with something for everyone.

The Fiesta Classic range puts stylish motoring within everyone's reach.

The new Fiesta is set to maintain its position as Europe's best selling car in its class.

The new look Escort's good looks and lively performance ensure its continued success.

Discover the stunning qualities of the award winning Mondeo, where advanced technology and imaginative design are ideally brought together.

Whether it is business or pleasure the spacious and versatile Galaxy makes the ideal companion.

Blending comfort with durability ensures the Maverick 4x4 is the perfect choice for the adventurous.

The new Courier Kombi provides a perfect combination of a spacious 5-seater with the versatility of a highly practical load carrier.

Ford also offer a wide range of light to medium size commercial vehicles including the Fiesta Van, Courier, Escort and, of course, the Transit range.

For further details about Ford's range, simply visit your local Ford Dealership or **call free on 0800 111 222.**



Please note: The range of brochures is constantly updated and the ones shown on this page may differ from those in your Dealership.

The Government fuel figures do not express or imply any guarantee of the fuel consumption of any particular car. The cars themselves have not been tested and there are inevitably differences between individual cars of the same model. In addition, a car may incorporate particular modifications. Furthermore, the driver's style and road and traffic conditions, as well as the extent to which the car has been driven and the standard of maintenance, will affect its fuel consumption.

Insurance Groups are only as recommended by the Association of British Insurers. You should always consult your insurance adviser for confirmation.

Illustrations, descriptions and specifications. This catalogue was correct at the time of going to print. However, Ford policy is one of continuous product development. The right is reserved to change specifications, colours and prices of the models and items illustrated and described in this publication at any time. For the latest details always consult your Ford Dealer.

Optional Equipment. Throughout this publication, wherever a feature is described as being an 'Option' or 'Optional Fitment/Pack' etc, you should assume that it will be at extra cost to the base vehicle, unless specifically stated to the contrary.

Designed and produced electronically by
Allan Burrows Limited, Ingatestone, Essex.

Printed by Dencol

**Published by Marketing Communications,
Ford Motor Company Limited,
Brentwood, Essex, England.
Registered in England No 235446**

FA1264/1

March 1996.

© Ford Motor Company Limited.

Your Ford Dealer

