

1990 CHRYSLER



New Yorker Fifth Avenue
New Yorker Landau
New Yorker Salon



There is no luxury
without engineering.

Chrysler began earning a reputation for engineering leadership more than 60 years ago. Every day, that reputation rides on every car we build.

We're proud of our new lineup of 1990 Chryslers. Not just because they're engineered as well as cars can be. Not just because they bear the prestigious Chrysler name or because they meet our high standard of luxury.

We're proud because we believe Chrysler builds the kind of car *you* can be proud to own. Not just a car you can count on, but a car that'll make you *feel* good...when you drive it, or when it's parked where the neighbors can see. And most important, a car you can feel *safe* inside of.

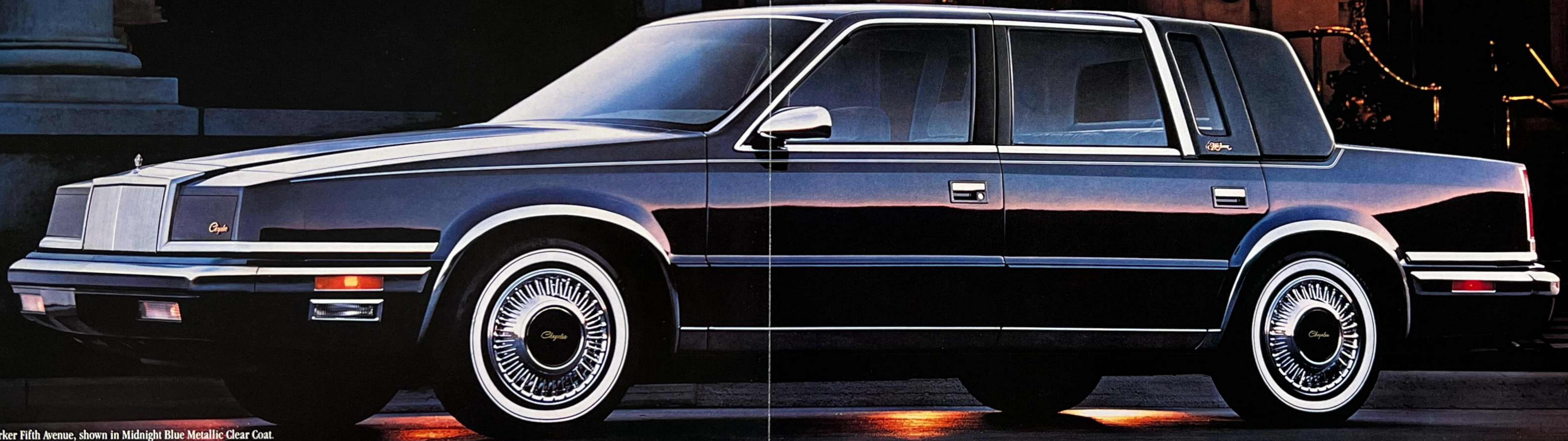
You can take my word for this: Chrysler will continue to build the kinds of cars that have built our reputation for engineering leadership.

Lee A. Iacocca



New Yorker Fifth Avenue, shown in Midnight Blue Metallic Clear Coat (foreground);
and New Yorker Landau, shown in Light Champagne Metallic Clear Coat (center);
New Yorker Salon, shown in Medium Blue Gray Metallic Clear Coat.

1 9 9 0 N e w Y o r k e r F i f t h A v e n u e



New Yorker Fifth Avenue, shown in Midnight Blue Metallic Clear Coat.

About this catalog. We have tried to make this catalog as complete as possible. However, since the time of printing, some of the information you'll find here may have been updated. Your dealer has details, and you should ask him for current information before ordering.

Some of the equipment shown or described throughout this catalog is available at extra cost.

Contemporizing a classic. A new New Yorker has been created to showcase contemporary technology while preserving classical style. The 1990 New Yorker Fifth Avenue revitalizes a classic name and incorporates the roominess, looks and luxuries of a more gracious time. Fifth Avenue offers a ride of pillow-perfect comfort, state-of-the-'90s engineering, *and* Chrysler's iron-clad Crystal Key Program (see page 23).

1 9 9 0 N e w Y o r k e r F i f t h A v e n u e



New Yorker Fifth Avenue, shown in Bright White Clear Coat.

Performance as pampering. Chrysler's new 3.3-liter multipoint EFI engine releases 147 hp of spirited acceleration as the even firing power of its V-6 configuration harnesses noise and vibration. Fifth Avenue, with the electronically controlled Ultra-drive four-speed transaxle that automatically monitors driving conditions, glides smoothly along on the gas-charged struts and shocks of its road-touring suspension.



New Yorker Fifth Avenue available electronic instrument cluster.

Technologically, it's a luxurious trip. Fifth Avenue has the information for the traveler who wants to know *everything*. The available fully electronic instrumentation displays vital functions and alerts the driver if problems arise. An Electronic Vehicle Information Center calculates trip times and miles, even fuel consumption. And once you arrive, an interlock feature prevents you from locking your keys in the ignition.

1 9 9 0 N e w Y o r k e r F i f t h A v e n u e



New Yorker Fifth Avenue available Mark Cross leather-with-vinyl-trim interior, shown in Midnight Blue.

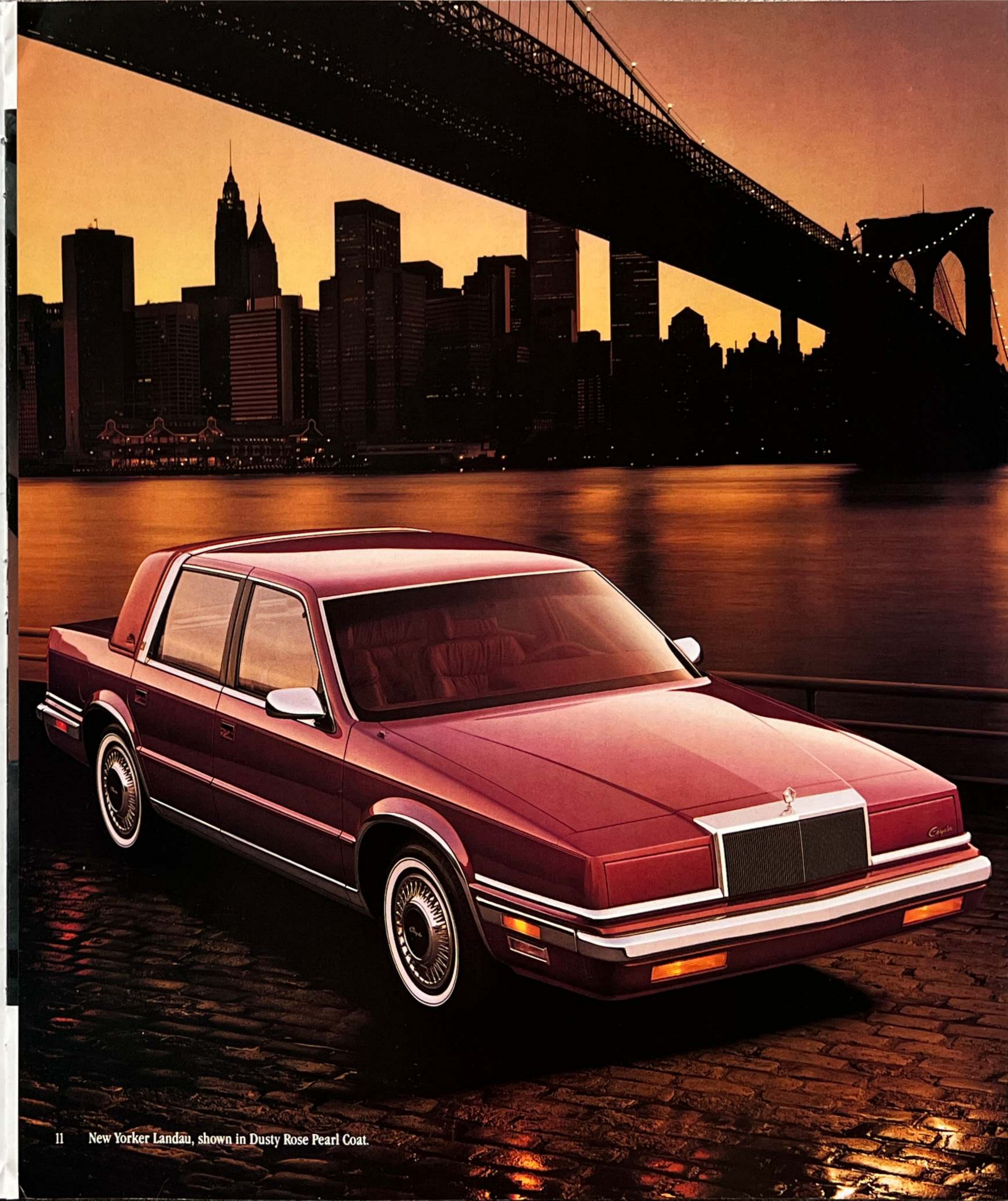
Comfort: an expanded version. The new Fifth Avenue stretches out over a 109.3-inch wheelbase that provides stretch-out rear-seat legroom—a spacious 41.7 inches of it. Front seats recline and the driver's seat adjusts six ways for long-haul comfort. And Fifth Avenue offers a host of safety features: driver-side air bag; rear-seat shoulder belts; and doors that lock automatically when speed reaches 15 mph.

N e w Y o r k e r L a n d a u

From quality, comes comfort. Technology advances quality. Quality accounts for comfort. In the 1990 New Yorker Landau, the comfort is luxurious. Comfort is a quality-car ride provided by such technological amenities as load-leveling suspension and the smoothness of the new 3.3-liter MPI V-6 engine coupled with a computer-controlled Ultradrive four-speed transaxle. Comfort can also be just a feeling... of being safe. Landau protects its occupants with such safety features as the steering wheel air bag and rear-seat shoulder belts. Comfort is quality.

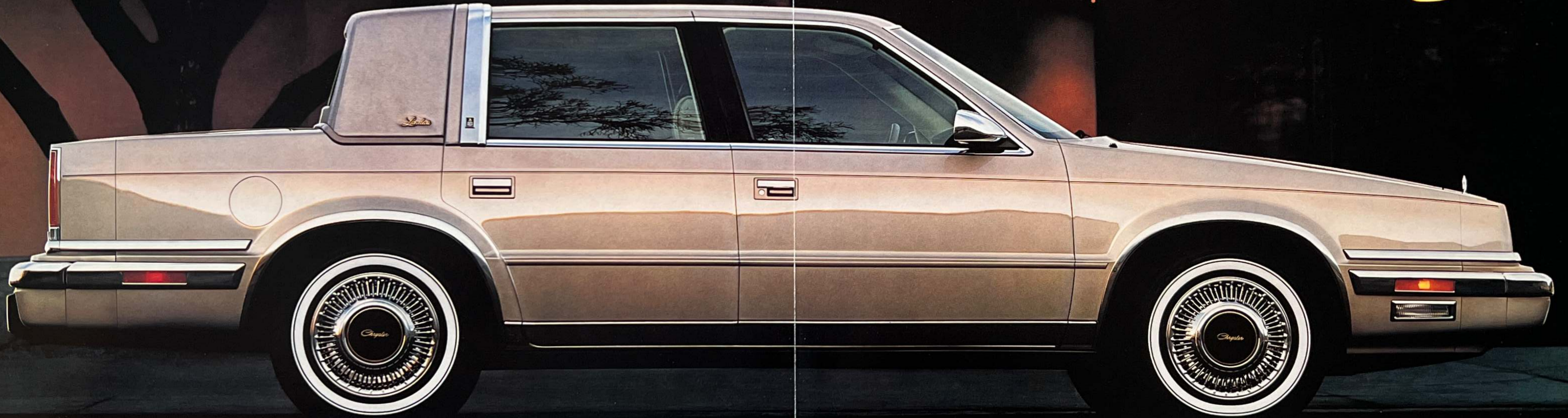


New Yorker Landau available Mark Cross leather-with-vinyl-trim interior, shown in Champagne.



11 New Yorker Landau, shown in Dusty Rose Pearl Coat.

1 9 9 0 N e w Y o r k e r L a n d a u



New Yorker Landau, shown in Light Champagne Metallic Clear Coat.

Style defined. There is a clear distinction between fashion and style. Style endures. Landau captures it. The padded vinyl roof that gives this New Yorker its name is a reminder of classic auto design, yet its subtly tapered silhouette marks Landau as distinctly contemporary. Contemporary, too, is Landau's technology – so quality-certain it is protected by Chrysler's incomparable Crystal Key Program (page 23).

1 9 9 0 N e w Y o r k e r S a l o n



New Yorker Salon, shown in Medium Blue Gray Metallic Clear Coat.

Elegance and grace on the go. The 1990 Salon four-door is a brilliant newcomer to the New Yorker family of distinguished automobiles. Form follows aerodynamic function in styling at once restrained and exciting. Salon's hood slopes gently. Its flush-mounted windshield and aircraft-style doors merge smoothly with the crisp, classic roofline. And the rear deck is slightly raised to complete Salon's superb profile.

Accustomed to comfort. New Yorker Salon satisfies every demand for comfort, for room, and for ride. Six adults can ride comfortably in Salon's roomy interior, surrounded by a fine complement of equipment and appointments. And they'll glide along smoothly with Salon's spirited 3.3-liter V-6 in concert with the electronically controlled Ultradrive four-speed automatic transaxle.

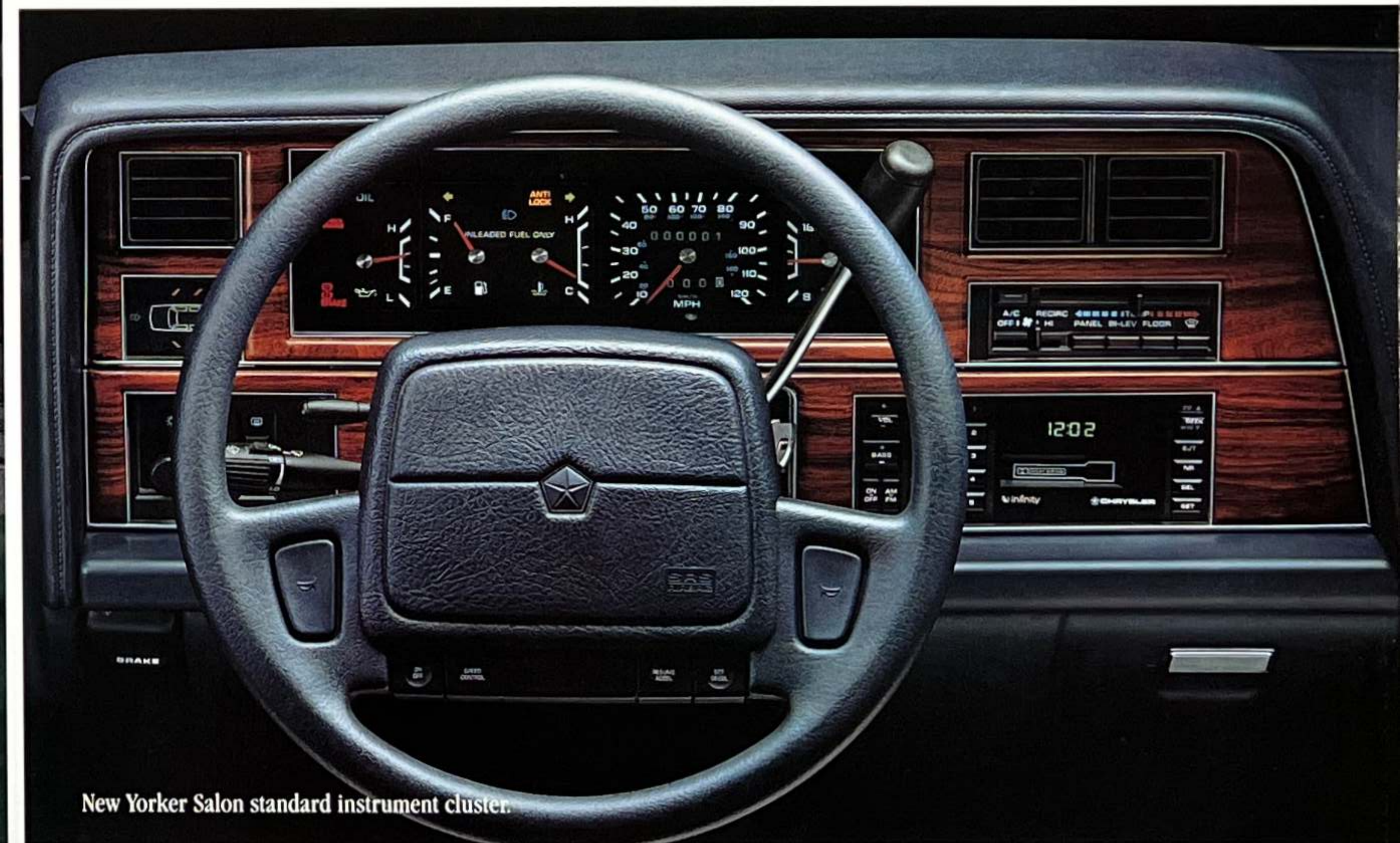
1 9 9 0 N e w Y o r k e r S a l o n



New Yorker Salon, shown in Bright White Clear Coat.



New Yorker Salon interior, shown in Midnight Blue cloth.

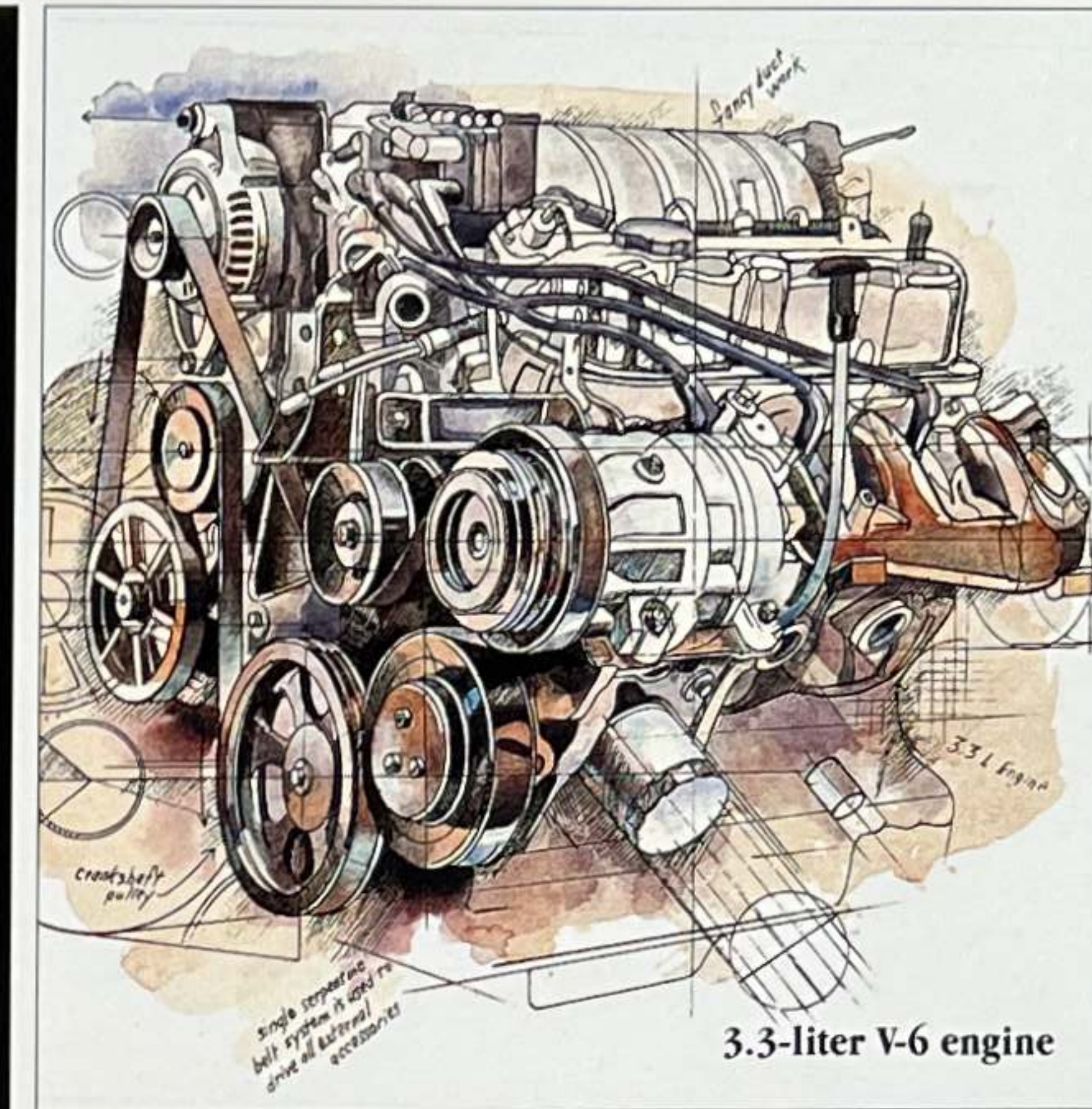
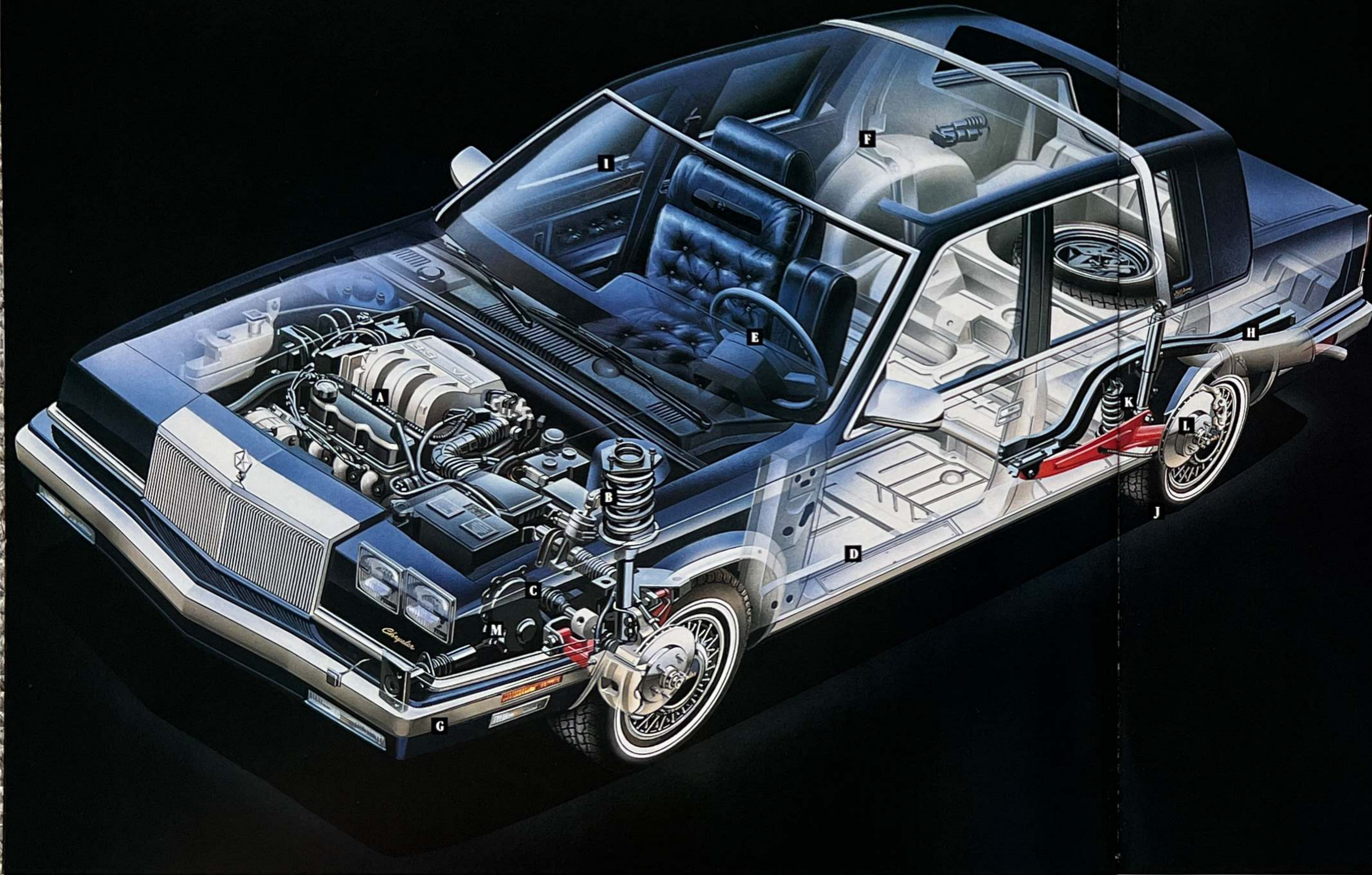


New Yorker Salon standard instrument cluster.

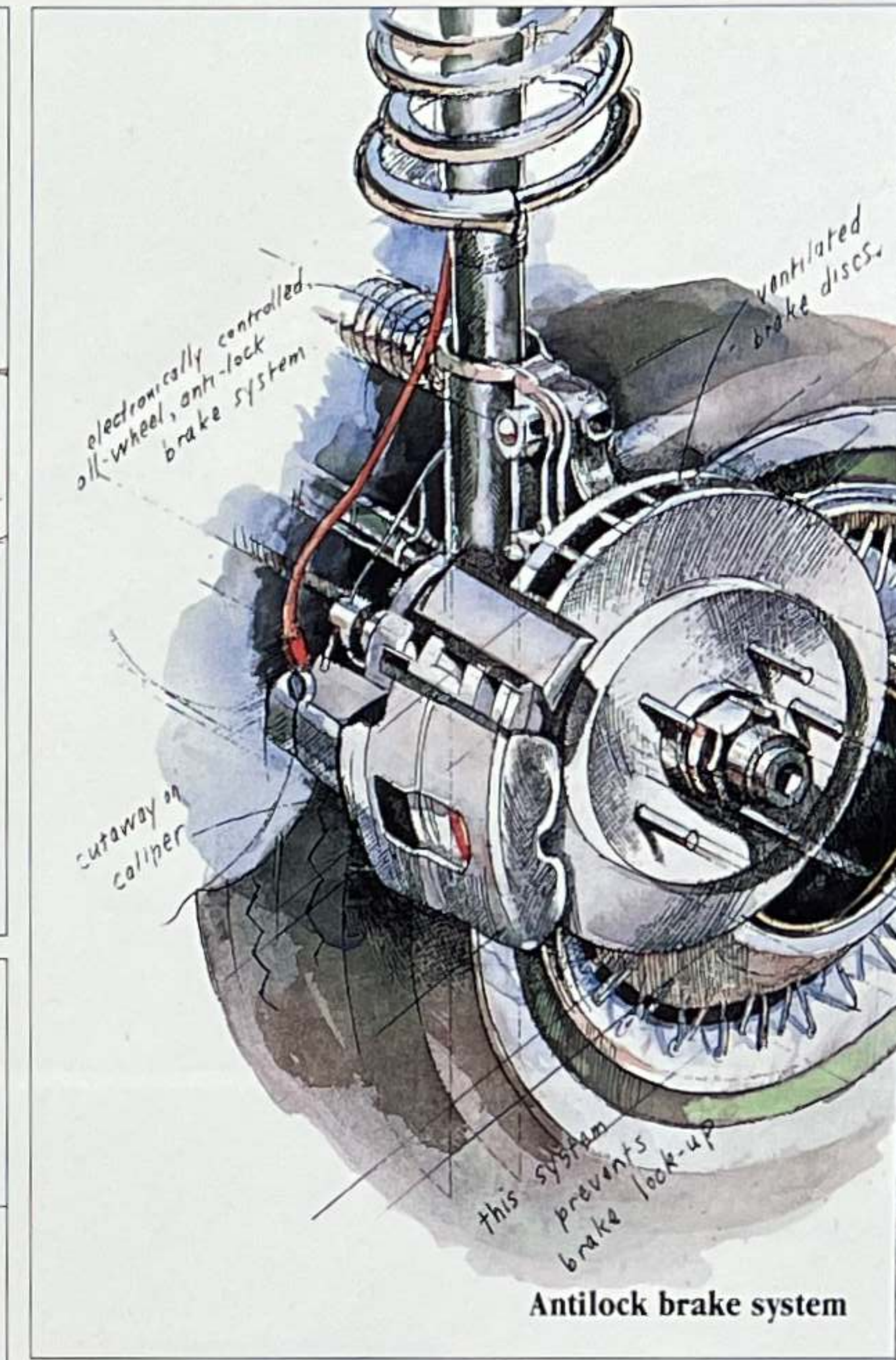
Exquisite appointments abound. Inside, Salon also has you in mind. Seating comfort is deep-cushioned—and the room of a full-size car lets you relax completely in lavish surroundings. Fifty/fifty front bench seats have dual armrests, reclining seatbacks, two-way adjustable head restraints and seatback pockets for added convenience. The seats adjust fore and aft individually for the comfort of the driver and passenger.

Designed for beauty...and safety. Salon offers not only elegantly styled lines to please the eye, but also technically sophisticated features to ease the mind. Salon's safety-first equipment includes: a driver-side air bag mounted in the steering wheel; front and rear outboard Unibelts; an energy-absorbing steering column, and a padded instrument panel. Protected by Chrysler's exceptional Crystal Key Program (page 23).

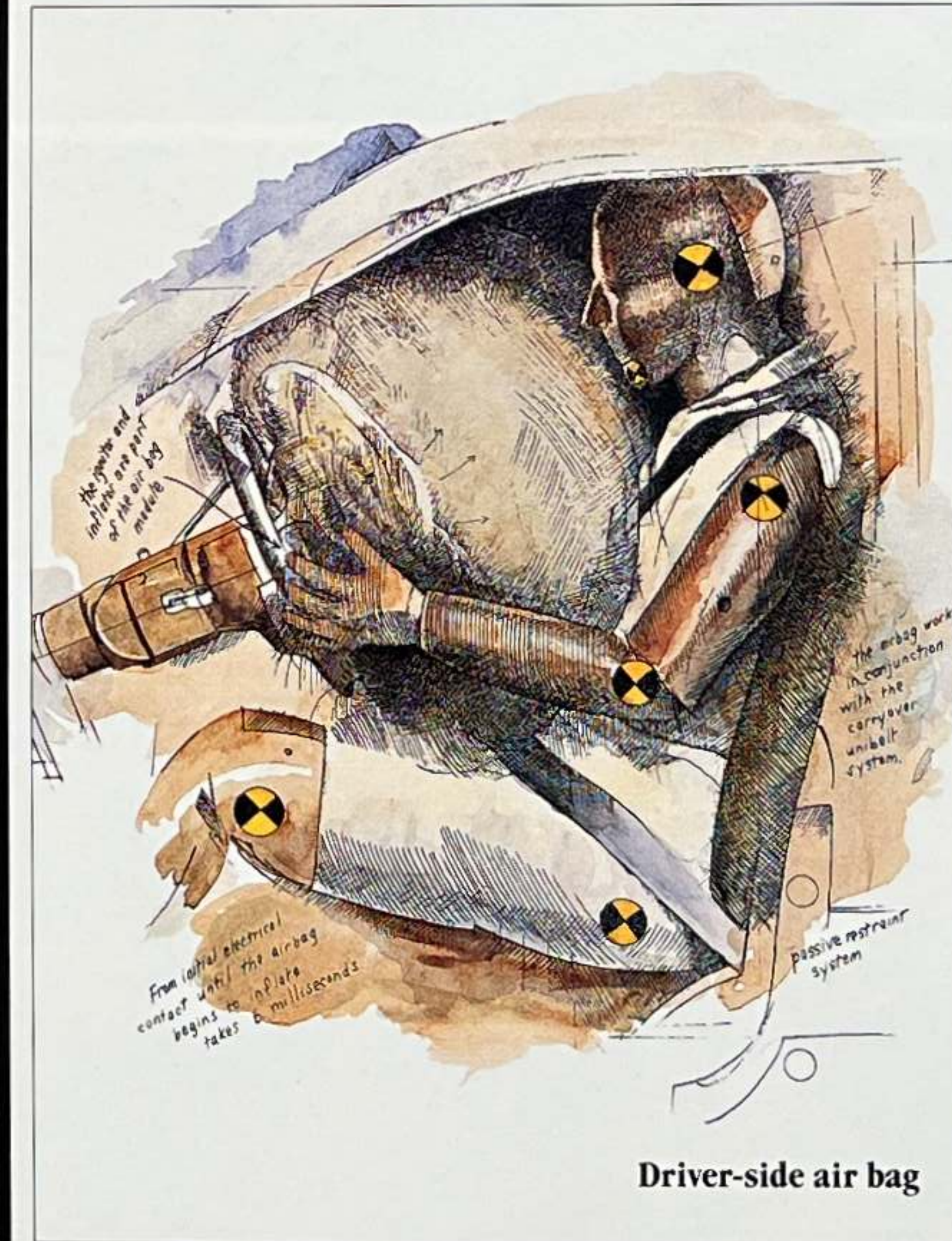
There is no luxury without engineering.



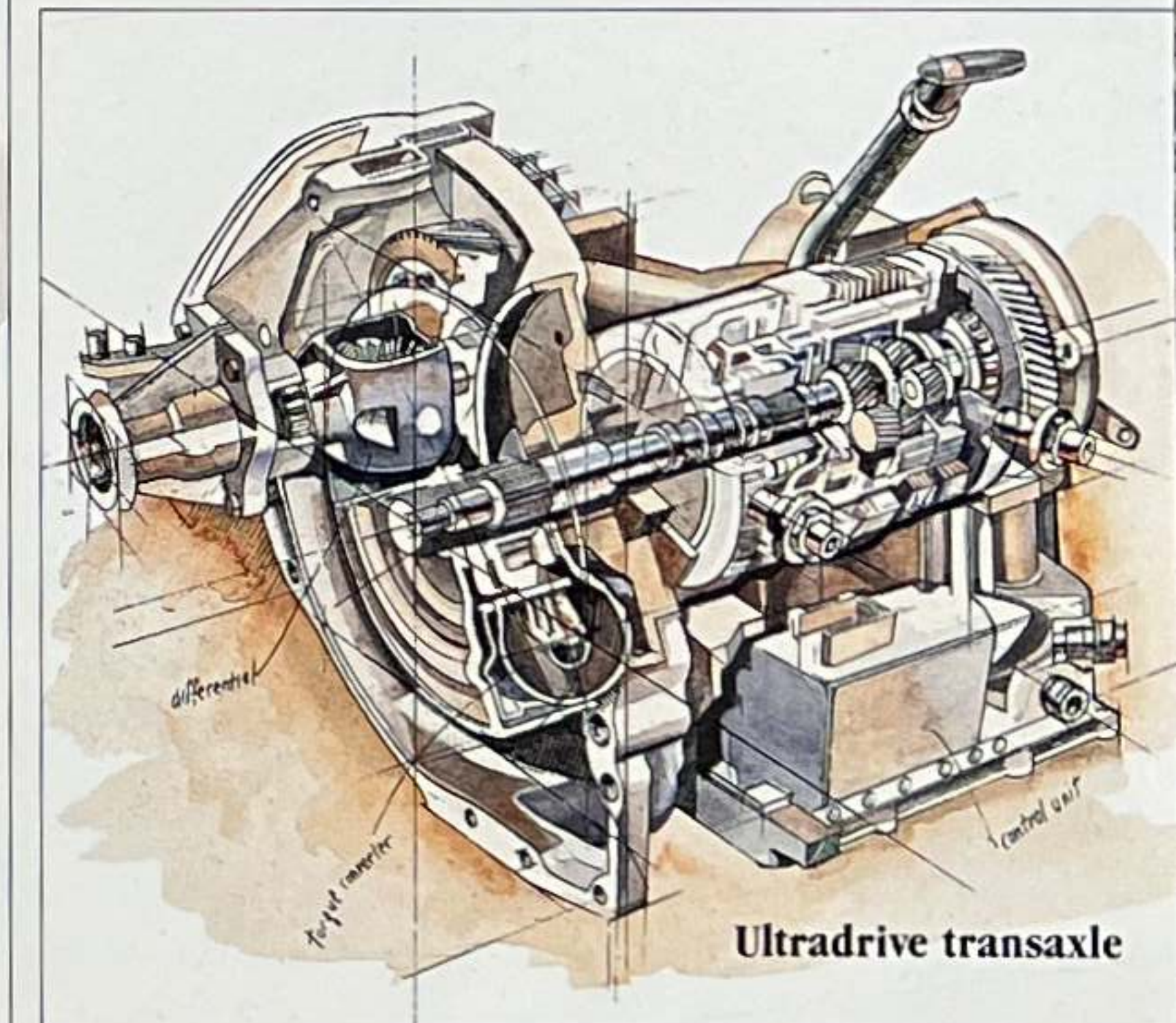
3.3-liter V-6 engine



Antilock brake system



Driver-side air bag



Ultradrive transaxle

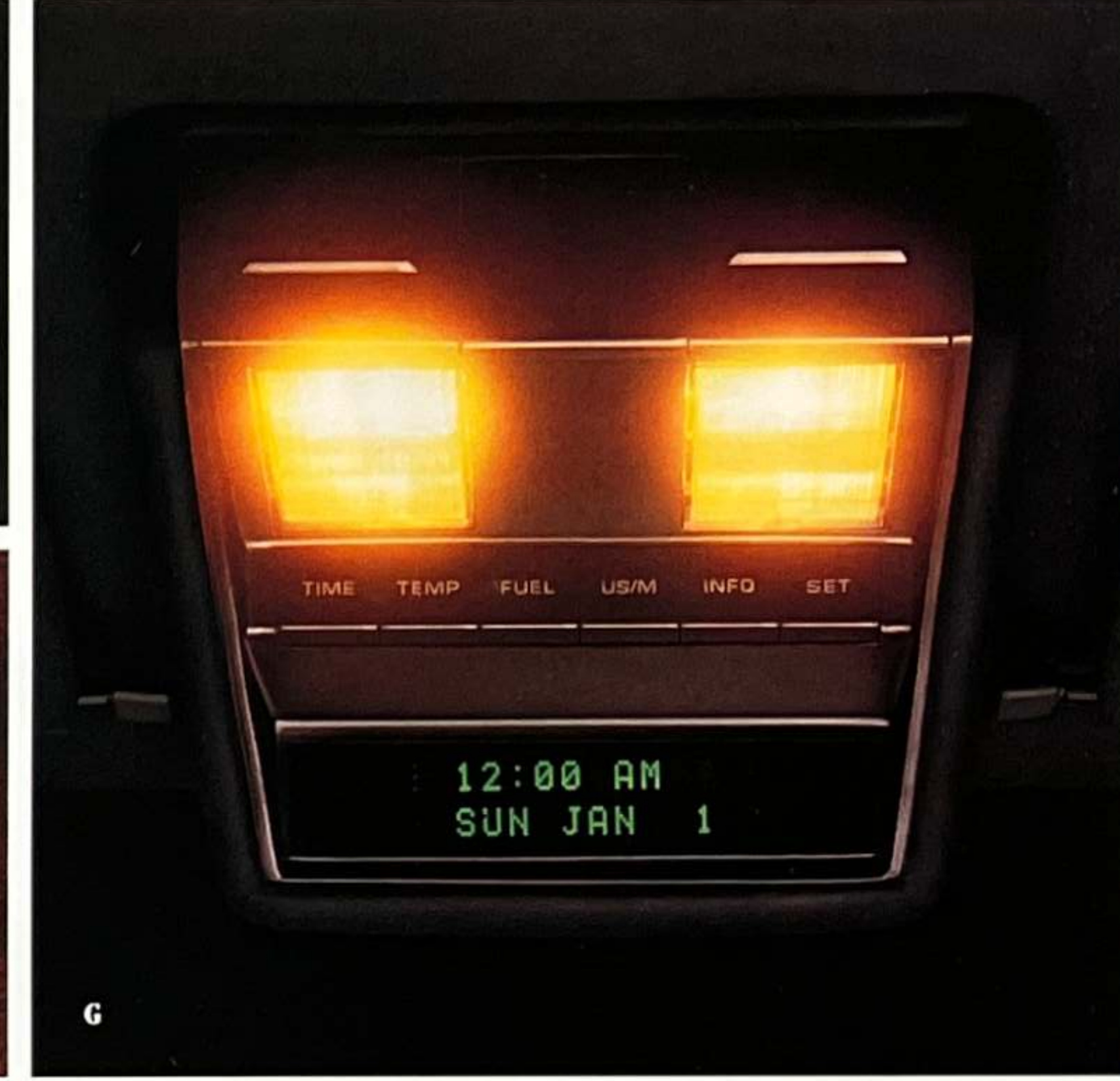
- A** New 3.3-liter V-6 with multipoint EFI delivers 147 horsepower at 4,800 rpm and 183 lb-ft of torque at 3,600 rpm.
- B** Position-sensitive front suspension struts minimize ride harshness due to increased damping of suspension components.
- C** Front-wheel drive helps "pull" vehicle through turns and provides better traction in snow and mud.

- D** Corrosion-resistant materials and galvanized steel are used extensively to help protect body parts from the elements.
- E** Driver-side air bag is mounted in the steering wheel. The Allstate Safety Leadership Award was presented to Chrysler Corporation in recognition of its industry leadership position in the application of driver-side air bags.
- F** Sound-deadening materials are placed strategically to reduce noise and vibration and provide a quieter ride.

- G** Double-protection bumpers protect lighting, body panels and the bumpers themselves if a barrier is struck at up to five mph.
- H** Stainless Pentasteel exhaust system offers corrosion protection.
- I** Vehicle theft security alarm system protects car electronically by sounding an alarm if unauthorized entry is attempted (optional).
- J** All-season tires are P195/75R14 steel-belted radial whitewalls, designed to complement the New Yorkers' suspension systems.

- K** Rear load-leveling suspension. To maintain constant vehicle height. (Optional Salon.)
- L** Antilock brake system. Available automatic system improves stability on slippery surfaces by preventing brake lockup and allows the driver to maneuver more safely under adverse conditions.
- M** Ultradrive transaxle. This four-speed automatic transaxle features fully adaptive electronic control for consistent shift quality for the life of the transaxle.

Standard Features and Options



A. Electromechanical instrument cluster is standard on New Yorker Fifth Avenue, Landau and Salon. It features a full complement of analog gauges and includes a graphic message center.

B. Tilt steering column adjusts to six positions for ultimate driving comfort (standard on Fifth Avenue, available on Landau and Salon). Air bag steering wheel is standard on all models.

C. Power windows and door locks. Door locks are automatically

actuated at 15 mph. Power door locks are optional on Landau and Salon. Power windows are optional on Salon.

D. Leather-with-vinyl trim interior is available for Chrysler Salon in Bordeaux or Charcoal.

E. Chrysler Infinity II Sound System. This highly sophisticated AM stereo*/FM stereo electronically tuned radio features a five-band graphic equalizer. Optional all New Yorker models.

F. Automatic climate control. Standard on Fifth Avenue and Landau. Manual air conditioning available on Salon.†

G. Overhead console includes twin map/courtesy lights standard. The Electronic Vehicle Information Center (EVIC) is available for installation in the console (on Fifth Avenue and Landau only).

H. Wheels and wheel covers. Luxury wheel cover (1) standard on both Fifth Avenue and Landau; 14-inch cast aluminum road wheel

(2) and wire wheel cover (3) optional for all models. Premium wheel cover (4) standard on Salon; 14-inch crossed wire wheel cover (5) optional for all models (late availability).

*Some AM stereo broadcasting may not be compatible with this radio.

†There are special engine cooling requirements for field-installed air conditioning. Failure to follow these requirements may invalidate warranty.

1 9 9 0 F i f t h A v e n u e , L a n d a u a n d S a l o n

INTERIOR TRIM



Standard Trim—Fifth Avenue and Landau.

Kimberly cloth individually adjustable 50/50 front seats with dual folding center armrests, two-way adjustable head restraints, and reclining seatbacks.



Standard Trim—Salon.

Kimberly cloth individually adjustable 50/50 front seats with two-way adjustable head restraints, reclining seatbacks, and dual folding center armrests.



Optional Trim—Salon.

Leather with vinyl trim. Individually adjustable 50/50 front seats with two-way adjustable head restraints, reclining seatbacks, and dual folding center armrests. Late availability, Bordeaux and Charcoal only.



Optional Trim—Fifth Avenue and Landau.

Mark Cross leather with vinyl trim individually adjustable 50/50 front seats with dual folding center armrests, two-way adjustable head restraints and reclining seatbacks.

Interior Colors. Bordeaux, Charcoal, Champagne, Midnight Blue

EXTERIOR COLORS



Black Cherry Pearl Coat



Dusty Rose Pearl Coat*



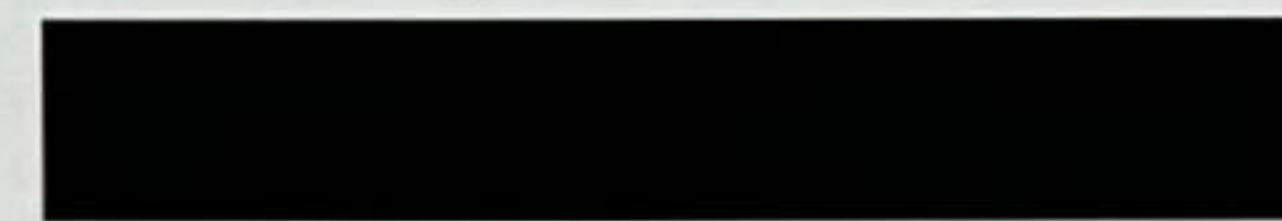
Light Champagne Metallic Clear Coat*



Midnight Blue Metallic Clear Coat



Medium Blue Gray Metallic Clear Coat



Black Clear Coat



Charcoal Pearl Clear Coat



Radiant Silver Metallic Clear Coat



Bright White Clear Coat

Note: Due to printing limitations, the colors shown will vary slightly from actual hues. See your Chrysler dealer for actual color chips.

*Extra cost.

STANDARD SAFETY FEATURES

- Air bag (driver's side only)
- Antitheft ignition and steering column lock
- Antitheft trunk lock
- Backup lights
- Brake fluid pressure loss warning light (also serves as indicator when parking brake is applied)
- Center high-mounted supplemental stoplight
- Combination lap-shoulder belts for driver and right front passenger and rear outboard passengers; lap belts for center locations
- Double ball-joint rearview mirror mount
- Dual braking system with separate brake fluid reservoirs in the master cylinder
- Dual throttle return springs
- Electric windshield washers and wipers

- Energy-absorbing front seatbacks
- Energy-absorbing instrument panel
- Energy-absorbing steering wheel
- Fade-resistant front disc brakes
- Fasten seat belt reminder
- Front seat head restraints
- Glare reduction measures for instrument panel, steering wheel, and windshield wipers
- Hazard warning flasher system
- Headlight and wiper circuit breakers with automatic reset
- Inside and outside rearview mirrors
- Inside hood release
- Interlocking door latches
- Key left in ignition warning
- Non-override rear door locks
- Recessed inside door release handles
- Reinforced windshield header and roof
- Resilient window crank knobs, if applicable
- Safety-Rim wheels
- Shatter-resistant glass
- Side door beams
- Side marker lights and reflectors
- Turn signals with lane-change feature

OPTIONAL DISCOUNT PACKAGES

A variety of accessory equipment and packages is available to add even more comfort, convenience and luxury to your new Chrysler. Your dealer can provide complete information.

CONSIDER LEASING

More consumers are considering leasing as an alternative to buying. Leasing a new Chrysler New Yorker usually involves a small security deposit and a first month's lease payment. Monthly payments frequently are less than financing a new car purchase. Ask your dealer for details.



MOPAR parts are engineered by Chrysler Motors for use in your new Chrysler New Yorker. When replacement is necessary, be sure to specify MOPAR parts. Used by professional mechanics worldwide.

STAINLESS PENTASTEEL EXHAUST SYSTEM

On every Chrysler Motors passenger car, all components of the exhaust system employ a corrosion-resistant steel alloy that has superior resistance to rust and to fatigue caused by high heat. This system provides longer life than conventional exhaust systems. Chrysler Motors provides the Stainless Pentasteel exhaust system on *all* its 1990 passenger cars, both domestic and import.



Only the Chrysler New Yorkers protect the entire car for five years or 50,000 miles.

	Basic Car Warranty Covers Entire Car Except Normal Upkeep	Major Components Protection	Deductible You Pay For Repair Of Major Components	Power Train Engine Protection	Outer Body Rust-Through Protection
1990 Fifth Avenue Landau Salon	5 Years/50,000 Miles	5 Years/50,000 Miles	None	7 Years/70,000 Miles	7 Years/100,000 Miles
1989 Rolls-Royce Corniche	3 Years/Unlimited	3 Years/Unlimited	None	3 Years/Unlimited	3 Years/Unlimited
1989 Mercedes-Benz 380 SEL	4 Years/50,000 Miles	4 Years/50,000 Miles	None	4 Years/50,000 Miles	4 Years/50,000 Miles
1989 Cadillac Sedan deVille	4 Years/50,000 Miles	4 Years/50,000 Miles	\$100 After 1 Year/12,000 Miles	4 Years/50,000 Miles	6 Years/100,000 Miles
1989 Lincoln Continental	1 Year/12,000 Miles	6 Years/60,000 Miles	\$100 After 1 Year/12,000 Miles	6 Years/60,000 Miles	6 Years/100,000 Miles

CRYSTAL KEY OWNER CARE PROGRAM

With Chrysler's Crystal Key Owner Care Program, for five years or 50,000 miles* all you do is take care of normal maintenance, adjustments, and wear items. Chrysler takes care of everything else. Engine, power train, air conditioning, steering, electrical. Everything right down to the door handles. And you're still protected on the engine and power train for seven years or 70,000 miles, and outer body rust-through for 100,000 miles.* The Crystal Key program is transferable. If you have a question or need information

there's a 24-hour toll-free hotline. New Yorker Fifth Avenue and New Yorker Landau and Salon warranty coverage includes:

5/50 Complete Car Warranty.* Extends the basic car warranty, including major components, from one year or 12,000 miles to a full five years or 50,000 miles. No deductible applies to first owner. Excludes adjustments, wear items, and maintenance.

7/70 Power Train Limited Warranty.* Upon expiration of the 5/50 complete car limited warranty, coverage is extended on power train components to

seven years or 70,000 miles. A deductible applies.

7/100 Anticorrosion Limited Warranty.* Your dealer will repair or replace at no charge outer body sheet metal panels found to have developed perforation (rust-through) in normal use up to seven years or 100,000 miles.

Customer Hotline. An "800" number to call 24 hours a day provides you with product information, dealer locations, and warranty information.

*See copy of limited warranty at dealer. Transferable to second owner only. Restrictions apply.



7/70 POWER TRAIN LIMITED WARRANTY

Upon expiration of the 12-month or 12,000-mile Basic Limited Warranty, coverage is extended on power train components to seven years or 70,000 miles. A deductible applies. See your dealer for a copy of the warranty.

7/100 ANTICORROSION LIMITED WARRANTY

Your dealer will repair or replace at no charge outer body sheet metal panels found to have developed perforation (rust-through) in normal use up to seven years or 100,000 miles. See your dealer for a copy of the warranty.

CHRYSLER PURCHASE ASSISTANCE PROGRAM FOR THE PHYSICALLY CHALLENGED

Cash reimbursements of up to \$500 are available for qualified adaptive driving devices on 1990 Chrysler Motors cars and trucks. For further information, contact your dealer or the PHYSICALLY CHALLENGED RESOURCE CENTER at 1-800-255-9877.

OPTIONAL SERVICE CONTRACT COVERAGE

Chrysler Service Contracts provide you with additional peace of mind protection for your new vehicle. Chrysler Motors offers a variety of plans to meet your needs. Plan coverage begins after your vehicle's basic warranty expires. A deductible applies. Allowances for car rental and towing are also included. See your dealer for details.

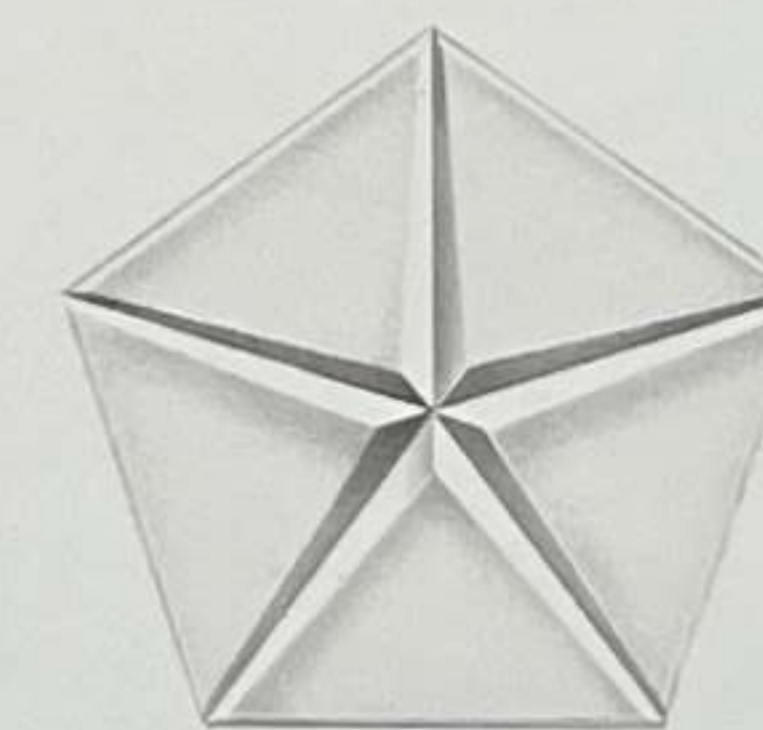
For complete details on standard equipment, specifications and technical information, ask your dealer for a copy of the 1990 Chrysler Technical Specifications Guide.



MAKING THE BEST EVEN MORE AFFORDABLE

Chrysler Credit offers a variety of finance programs that will help make your new Chrysler New Yorker even more affordable. These special finance and leasing programs are designed to meet the needs of today's automotive buyer. They include Gold Key Lease, America's Choice Payment Plan, College Graduate Plans, Retailing Financing, and more. Ask your salesperson for details.

All product illustrations and specifications are based upon current information at the time of publication approval. Although descriptions are believed correct, complete accuracy cannot be guaranteed. Chrysler Motors reserves the right to make changes from time to time, without notice or obligation, in prices, specifications, colors and materials, and to change or discontinue models. See your dealer for the latest information.



There is no luxury without engineering.



Buckle up for safety.

Chrysler and MOPAR are registered trademarks, and New Yorker is a trademark of Chrysler Motors Corporation.

Chrysler.
There is
no luxury without
engineering.

