

2008 LEXUS LS



## 2008 LEXUS LS



Optional equipment shown.

**THE PLATINUM STANDARD.** Innovative, inspiring and courageous, the Lexus LS is the essence of a singular desire – to build the most sophisticated sedan on the road. From the world's first eight-speed automatic transmission; first available hands-free, computer-controlled parallel parking;<sup>1</sup> first available infrared sensor that reads body temperature for optimum cabin climate; and rear seating as luxurious as a private jet, the Lexus LS is the new standard in the relentless pursuit of perfection.

**Eight Forward Gears. One Reverse. Call It Priorities.** Call it a world's first. Coupled to a new, incredibly powerful 4.6-liter V8, generating 380 horsepower<sup>2</sup> and 367 lb-ft of torque<sup>2</sup>, the eight-speed automatic transmission finds 60 miles per hour in 5.4 incredibly smooth seconds.<sup>2,3</sup>

**Available World's Firsts:** Premium Luxury Full-Hybrid V8 ■ Four-zone automatic climate control with infrared temperature sensor ■ Advanced Parking Guidance System<sup>1</sup> on a luxury vehicle

<sup>1,2,3</sup>See page 14 for more information.

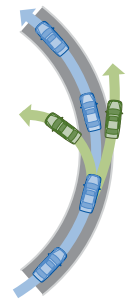
## 2008 LEXUS LS Safety



### THERE IS NO GREATER LUXURY THAN SAFETY.

Comfort in the Lexus is furthered through groundbreaking safety innovations, including an available Pre-Collision System<sup>4</sup> that uses radar to detect possible obstacles ahead and, if an accident is inevitable, retracts front seatbelts while preparing Brake Assist<sup>5</sup> for increased brake-force. As well, the LS utilizes Vehicle Dynamics Integrated Management (VDIM)<sup>6</sup> to greatly assist the driver in anticipating and helping to correct a skid during cornering. And in every LS, you'll find the confidence of an entire system of airbags,<sup>7</sup> from dual-stage front airbags<sup>7</sup> for frontal collisions, to side airbags<sup>7</sup> built into the front seats, side curtain airbags<sup>7</sup> that run the length of the side windows, and even knee airbags<sup>7</sup> to help protect the driver and front passenger.

**Safety Features:** Extensive airbag system (SRS)<sup>7</sup> ■ Vehicle Dynamics Integrated Management (VDIM)<sup>6</sup> ■ Dual-swivel Adaptive Front Lighting System (AFS) with High-Intensity Discharge (HID) headlamps ■ Electronic Controlled Braking (ECB) ■ Electronic Power Steering (EPS) ■ Brake Assist<sup>5</sup> ■ Electronic Brakeforce Distribution (EBD) ■ Direct Tire Pressure Monitor System<sup>8</sup> ■ Automatic Electronic Parking Brake ■ Available Pre-Collision System (PCS)<sup>4</sup> ■ Available Variable Gear-Ratio Steering (VGRS) ■ Available Lexus Link<sup>®9</sup>



<sup>4,5,6,7,8,9</sup> See page 14 for more information.

## 2008 LEXUS LS Interior



**REASON ENOUGH TO HIRE A CHAUFFEUR.** Climb into the back of a Lexus LS 460 L equipped with the special-order Executive-Class Seating Package,\* and you enter the opulence of a private jet. There is a rear-passenger-side, leather-trimmed, 45-degree reclining seat, complete with a legrest,<sup>10,11</sup> DVD entertainment system, fold-out worktable and multifunction seat massager, all for unmatched comfort.

**Available Rear-Seat Amenities:** Right rear-seat reclines 45 degrees ■ Right rear-seat power-adjustable legrest<sup>10,11</sup> and massager ■ DVD Rear-Seat Entertainment System (RSES) with power nine-inch screen ■ Rear-seat cool box ■ Retractable wood-trimmed table ■ Climate-comfort seats with heat/cool knob ■ Power rear-door sunshades ■ Power rear sunshade ■ Air Purifier ■ Rear-seat dual-zone automatic climate control with infrared temperature sensor

<sup>10,11</sup>See page 14 for more information.

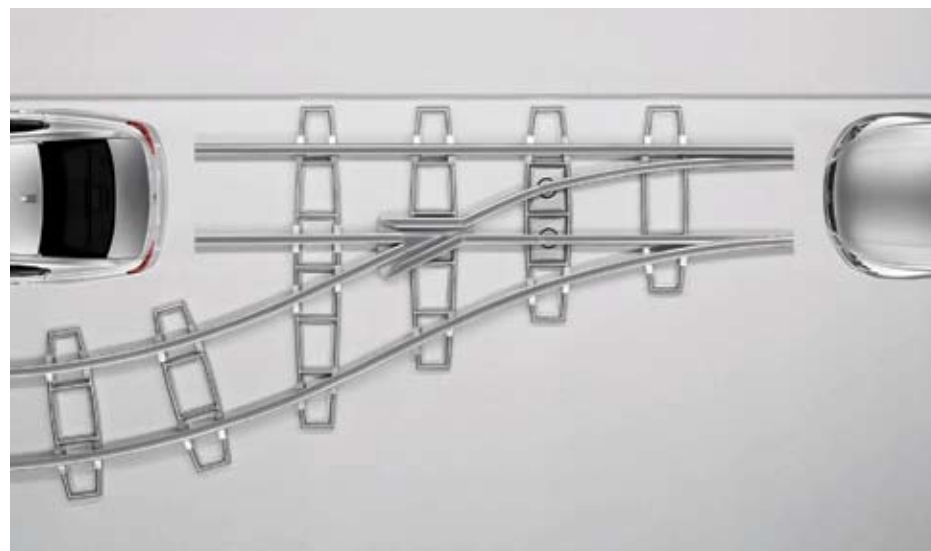
\*Please see page 14 for more information regarding options/accessories/packages.



## 2008 LEXUS LS Technology



Optional equipment shown.



**FORWARD. REVERSE. AND NOW PARALLEL.** Push a button, let go of the wheel, and watch your Lexus park. The available Advanced Parking Guidance System<sup>1</sup> masters parallel parking through a sonar and computer system, requiring only the slightest of braking from the driver, to glide the Lexus LS into any appropriately sized parking space.

**FORECAST: SUBLIME.** For optimal comfort, the LS uses an available infrared sensor to determine body temperatures for the rear-seat passengers, then adjusts the heating and cooling to predetermined temperature settings.

<sup>1</sup>See page 14 for more information.

## 2008 LEXUS LS Mark Levinson® Audio System



Optional equipment shown.



**ENCORE.** Music connoisseurs will appreciate the available 19-speaker Mark Levinson® Reference Surround Sound Audio System.<sup>12</sup> Boasting a tremendous 450 watts at less than 0.1% THD, 20-20,000 Hz<sup>13</sup> inside one of the world's quietest cabins, coupled with an Automatic Sound Levelizer that intuitively raises and lowers volume should outside noise interfere, the Lexus LS offers a near-concert-quality experience.

**Audio System Features:** Hard Disk Drive (HDD) audio server with 2,000-song capacity  
■ 19 speakers ■ Acoustically quiet cabin ■ 450 watts at less than 0.1% Total Harmonic Distortion (THD), 20-20,000 Hz<sup>13</sup> ■ 7.1-channel surround sound speaker architecture ■ In-dash, single-feed, six-disc DVD/CD auto-changer ■ Available XM® Satellite Radio<sup>14</sup>

<sup>12,13,14</sup> See page 14 for more information.

## 2008 LEXUS **LS** Navigation



Optional equipment shown.

**TRAFFIC MANEUVERS.** Introducing intelligent driving. Utilizing 30 GB of intelligence, the available Navigation System<sup>15</sup> on the Lexus LS is our smartest and most dynamic. Thanks to the Hard Disk Drive (HDD) rather than DVD information retrieval, the Navigation System builds routes instantly against real-time traffic situations including road construction and average speed of traffic flow. The XM<sup>®</sup> satellite-linked Lexus Navigation System<sup>15</sup> is preloaded with over eight million points of interest, can understand over 100 spoken commands, and uses Bluetooth<sup>®</sup> technology<sup>16</sup> for seamless cellphone integration. Add to that the brilliant screen in 32,000 colors, and it is as beautiful as it is smart.

**Navigation System Features:** 30 GB Hard Disk Drive (HDD)

- Increased screen resolution and 32,000 display colors
- Voice-activated destination input
- Voice-activated dial-by-name and dial-by-number
- Dynamic route guidance<sup>15</sup>
- Spanish and French language guidance capability
- Real-time traffic updates provided by XM<sup>®</sup> NavTraffic<sup>TM15</sup>

<sup>15,16</sup> See page 14 for more information.

## 2008 LEXUS **LS** Performance



Optional equipment shown.

**MULTIPLIED POWER.** Through intelligent engineering, the LS offers significantly more power than ever before—380 horsepower<sup>2</sup> and 367 lb-ft of torque.<sup>2</sup> Its unique fuel-injection system utilizes both port and direct injectors for more precise delivery of fuel and better management of the air/fuel ratio in the combustion chamber. Part of what makes this direct injection so efficient is the piston's contour, which directs a richer concentration of gasoline toward the spark plug—resulting in more intense combustion. Also, dual Variable Valve Timing with intelligence (VVT-iE) continuously monitors the engine's speed and load, and responds by automatically increasing torque at lower speeds and increasing horsepower at higher speeds. Additionally, a new electronic intake valve control improves the dual VVT-iE's response in all temperatures over the previous hydraulic system. These innovations also help reduce emissions: The LS is rated an Ultra-Low Emission Vehicle. But most obviously, they bolster its elegant ride with seemingly unstoppable race-like power.

**Performance Features:** 4.6-liter V8 with dual Variable Valve Timing with intelligence and Electronic intake valve timing (VVT-iE) ■ 380 hp<sup>2</sup> and 367 lb-ft of torque<sup>2</sup> ■ 0 to 60 in 5.4 seconds<sup>2,3</sup> ■ Ultra-Low Emission Vehicle (ULEV II) ■ Electronic Power Steering (EPS) ■ Available Adaptive Variable Air Suspension (AVS) ■ Available high-friction brakes<sup>17</sup>

<sup>2,3,17</sup> See page 14 for more information.



## 2008 LEXUS **LS** Options & Accessories

### OPTION PACKAGES\*

#### Navigation System/Advanced Parking Guidance System Package (LS 460)

Advanced Parking Guidance System<sup>1</sup>—requires Intuitive Parking Assist ■ Voice-activated HDD Navigation System<sup>15</sup> with backup camera,<sup>18</sup> Bluetooth<sup>®</sup> technology<sup>16</sup>, XM<sup>®</sup> Satellite Radio<sup>14</sup> and real-time traffic capability

#### Navigation System/Mark Levinson<sup>®</sup> Reference Audio System Package (LS 460)

Voice-activated HDD Navigation System<sup>15</sup> with backup camera,<sup>18</sup> Bluetooth<sup>®</sup> technology,<sup>16</sup> XM<sup>®</sup> Satellite Radio<sup>14</sup> and real-time traffic capability ■ Mark Levinson 19-speaker, 450-watt @ less than 0.1% THD, 20-20,000 Hz<sup>13</sup> Reference Surround Sound Audio System<sup>12</sup> with Hard Disk Drive, 7.1 architecture and in-dash, single-feed, six-disc DVD/CD auto-changer featuring DVD-audio and DVD-video playback

#### Navigation System/Mark Levinson Reference Audio System/Advanced Parking Guidance System Package (LS 460)

Advanced Parking Guidance System<sup>1</sup>—requires Intuitive Parking Assist ■ Voice-activated HDD Navigation System<sup>15</sup> with backup camera,<sup>18</sup> Bluetooth<sup>®</sup> technology,<sup>16</sup> XM<sup>®</sup> Satellite Radio<sup>14</sup> and real-time traffic capability ■ Mark Levinson 19-speaker, 450-watt @ less than 0.1% THD, 20-20,000 Hz<sup>13</sup> Reference Surround Sound Audio System<sup>12</sup> with Hard Disk Drive, 7.1 architecture and in-dash, single-feed, six-disc DVD/CD auto-changer featuring DVD-audio and DVD-video playback

#### Comfort Package (LS 460)

Wood- and leather-trimmed heated steering wheel ■ Climate-comfort front seats with heat/cool knob ■ Heated rear seats ■ Power rear sunshade ■ Headlamp washers

#### Comfort Plus Package (LS 460)

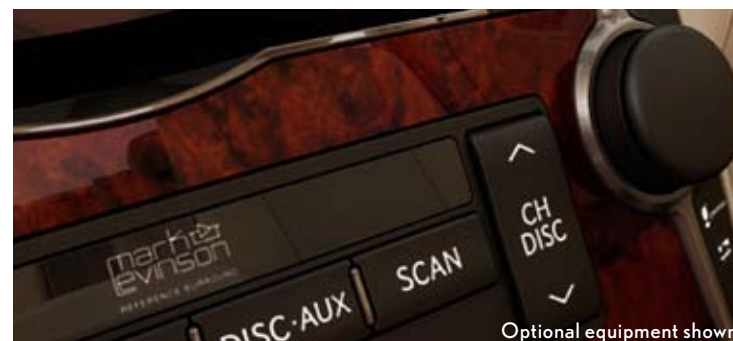
Wood-and leather-trimmed heated steering wheel ■ Climate-comfort front and rear seats with heat/cool knob ■ Power rear seats with power headrests and memory ■ Power rear sunshade ■ Headlamp washers ■ Rear-seat side airbags (SRS)<sup>7</sup>

<sup>1,7,12,13,14,15,16,18</sup> See page 14 for more information.

\*Please see page 14 for more information regarding options/accessories/packages.



Optional equipment shown.



Optional equipment shown.



Optional equipment shown.

## 2008 LEXUS **LS** Options & Accessories (Continued)

### OPTION PACKAGES\*

#### Luxury Package (LS 460 L)

Semi-aniline leather-trimmed interior ■ Climate-comfort rear seats with heat/cool knob ■ Power rear seats with power headrests and memory ■ Alcantara® headliner ■ Rear-seat side airbags (SRS)<sup>7</sup>

#### Rear-Seat Upgrade Package—requires Luxury Package (LS 460 L)

Four-zone automatic climate control with interior air filter, smog sensor and automatic recirculation mode ■ Rear-seat Air Purifier ■ Rear-seat audio controls ■ Rear-seat cool box ■ Power rear-door sunshades

#### Executive-Class Seating Package (LS 460 L, special order only)

Four-person seating with rear fixed console<sup>11</sup> ■ Semi-aniline leather-trimmed interior ■ Four-zone automatic climate control with rear-seat infrared temperature sensor, interior air filter and automatic recirculation mode ■ Rear-seat Air Purifier ■ Climate-comfort rear seats with heat/cool knob ■ Right-rear power recliner with multifunction massager and legrest<sup>10,11</sup> ■ Power rear seats with power headrests and memory ■ Rear-seat wood-trimmed table ■ DVD Rear-Seat Entertainment System (RSES) with power nine-inch screen ■ Rear-seat audio controls ■ Rear-seat cool box ■ Power rear-door sunshades ■ Alcantara® headliner ■ Rear-seat side airbags (SRS)<sup>7</sup>

#### Air Suspension Package (LS 460 L)

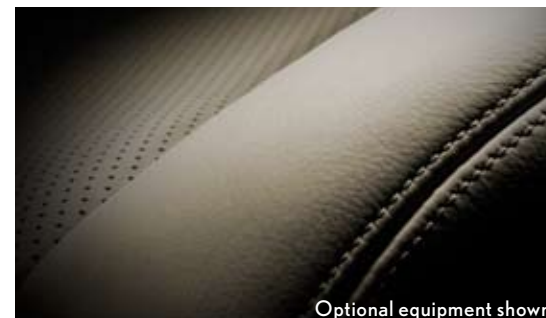
19 x 8.0-in five spoke alloy wheels with 245/45VR19 all-season tires<sup>19,20</sup> ■ Variable Gear-Ratio Steering (VGRS) ■ Adaptive Variable Air Suspension (AVS)

#### Touring Package (LS 460 L)

19 x 8.0-in five spoke alloy wheels with 245/45RY19 tires<sup>19,20</sup> ■ Variable Gear-Ratio Steering (VGRS) ■ Sport-tuned Adaptive Variable Air Suspension (AVS) ■ High-friction brakes<sup>17</sup> with 14.1-in (front) and 13.3-in (rear) ventilated discs

### Individual Options and Accessories

Adaptive Variable Air Suspension (AVS) and Variable Gear-Ratio Steering (VGRS) (LS 460 L) ■ Mark Levinson® 19-speaker, 450-watt @ less than 0.1% THD, 20-20,000 Hz<sup>13</sup> Reference Surround Sound Audio System<sup>12</sup> with Hard Disk Drive, 7.1 architecture and in-dash, single-feed, six-disc DVD/CD auto-changer featuring DVD-audio and DVD-video playback (LS 460 L) ■ Voice-activated HDD Navigation System<sup>15</sup> with backup camera,<sup>18</sup> Bluetooth® technology,<sup>16</sup> XM® Satellite Radio<sup>14</sup> and real-time traffic capability<sup>15</sup> (standard on LS 460 L) ■ Intuitive Parking Assist ■ Advanced Parking Guidance System<sup>1</sup>—requires Intuitive Parking Assist (LS 460 L) ■ Power door closers and power rear trunk open/close (standard on LS 460 L) ■ Pre-Collision System (PCS)<sup>4</sup> and Dynamic Radar Cruise Control<sup>21</sup> ■ Lexus Link®<sup>9</sup> ■ All-weather floor mats ■ Premium carpet floor mats ■ Trunk mat ■ Cargo net ■ Wireless headphones<sup>22</sup> ■ Car cover ■ 18-in Teleios alloy wheels<sup>19,20</sup> ■ Wheel locks ■ Leather care kit



Optional equipment shown.



Optional equipment shown.

<sup>1, 4, 7, 9, 10, 11, 12, 13, 14, 15, 16, 17, 19, 20, 21, 22</sup> See page 14 for more information.

\*Please see page 14 for more information regarding options/accessories/packages.

# 2008 LEXUS LS Specifications

## BODY, DIMENSIONS

Type	Five-passenger luxury sedan Available four-passenger premium configuration (LS 460 L) <sup>11</sup>
Construction	Welded-steel unibody
Overall Length	198.0 in (5,029 mm) (LS 460) 202.8 in (5,151 mm) (LS 460 L)
Width	73.8 in (1,875 mm)
Height	58.1 in (1,476 mm) 57.7 (1,466 mm) (with available Adaptive Variable Air Suspension)
Ground Clearance	5.7 in (145mm) 5.9 in (150mm) (with available Adaptive Variable Air Suspension)
Wheelbase	116.9 in (2,969 mm) (LS 460) 121.7 in (3,091 mm) (LS 460 L)
Curb Weight	4,244 lb (1,925 kg) (LS 460) 4,332 lb (1,965 kg) (LS 460 L)
Fuel-Tank Capacity	22.2 gal (84 L)
Trunk Capacity	18.0 cubic feet (510 L) 14.1 cubic feet <sup>23</sup> (399 L) (LS 460L with available Rear-Seat Upgrade Package or Executive-Class Seating Package)
Headroom	38.0/38.0 in (965/965 mm) (front/rear)
Shoulder Room	58.5/56.9 in (1,486/1,445 mm) (front/rear) (LS 460) 58.5/56.4 in (1,486/1,433 mm) (front/rear) (LS 460 L)
Hip Room	55.4/55.5 in (1,407/1,410 mm) (front/rear)

## CHASSIS

Vehicle Dynamics Integrated Management (VDIM) <sup>6</sup>	Advanced stability and traction management system designed to proactively but seamlessly integrate separate vehicle dynamic functions to enhance driver control and vehicle performance under a variety of adverse conditions. VDIM <sup>6</sup> manages the integration of Electronic Controlled Braking (ECB), Electronic Power Steering (EPS), available Variable Gear-Ratio Steering (VGRS), Vehicle Stability Control (VSC), <sup>6</sup> Traction Control (TRAC), the Anti-lock Braking System (ABS), Electronic Brakeforce Distribution (EBD) and Brake Assist
Suspension	Front: Independent, upper and lower multi-link double joint suspension arms with coil-over monotube shock absorbers and stabilizer bar.  Rear: Independent, multi-link double-joint suspension arms with coil-over monotube shock absorbers and stabilizer bar. Available height-adjustable Adaptive Variable Air Suspension (AVS) with electronically modulated damping (LS 460 L)  Height-adjustable sport-tuned Adaptive Variable Air Suspension (AVS) (LS 460 L)
Steering	Electronic Power Steering (EPS) system, 3.2 turns lock-to-lock. With Available Variable Gear-Ratio Steering (VGRS) and 18-inch wheels, 2.5-3.5 turns lock-to-lock and with optional 19-inch wheels, 2.4-3.5 turns lock-to-lock
Brakes	Four-wheel, power-assisted discs with Electronic Controlled Braking (ECB), four-sensor, four-channel Anti-lock Braking System (ABS), Electronic Brakeforce Distribution (EBD) and Brake Assist. <sup>5</sup> 13.1-in ventilated front, 12.4-in ventilated rear discs. 14.1-in ventilated front, 13.3-in ventilated rear discs <sup>17</sup> (with available Touring Package)
Wheels and Tires	18 x 7.5-in nine-spoke alloy wheels with 235/50VR18 all-season tires. <sup>19,20</sup> Full-size spare tire on alloy wheel. Optional wheels and tires: 19 x 8.0-in five-spoke alloy wheels with 245/45YR19 summer tire <sup>19,20</sup> (with available Touring Package) or 245/45VR19 all-season tires (with available Air Suspension Package)

## DRIVETRAIN

Transmission	Eight-speed sequential-shift automatic Electronically Controlled Transmission with intelligence (ECT-i)
Drive Wheels	Rear, with standard Vehicle Dynamics Integrated Management (VDIM) <sup>6</sup>
Final Drive Ratio	2.937:1



5, 6, 11, 17, 19, 20, 23 See page 14 for more information.



## 2008 LEXUS LS Specifications (Continued)

ENGINE	Engine Type	90° V8, aluminum block and heads, certified Ultra-Low Emission Vehicle (ULEV II)
	Displacement	4.6 liters (281 cubic inches)
	Valvetrain	Four cam, four valves per cylinder, with dual Variable Valve Timing with intelligence and Electronic intake valve timing (VVT-iE)
	Compression Ratio	11.8:1
	Horsepower at RPM	380 hp @ 6,400 <sup>2</sup>
	Torque at RPM	367 lb-ft @ 4,100 <sup>2</sup>

PERFORMANCE	0 - 60 MPH Acceleration	5.4 seconds <sup>2,3</sup>
	1/4-Mile Acceleration	13.9 seconds <sup>2,3</sup>
	Top Track Speed	130 mph <sup>2,3</sup>
	EPA Fuel Economy Estimates	16/24 mpg <sup>24</sup> (city/highway)
	Aerodynamic Drag Coefficient	0.26
	Turning Circle	35.4 ft (LS 460) 36.8 ft (LS 460 L with 18-in wheels) 37.5 ft (LS 460 L with optional 19-in wheels)

### STANDARD SAFETY

Driver's and front passenger's advanced airbag system (SRS)<sup>7</sup> with front passenger's twin-chamber airbag<sup>7</sup> • Front seat-mounted side airbags (SRS)<sup>7</sup> • Driver's and front passenger's knee airbags (SRS)<sup>7</sup> • Front and rear side curtain airbags (SRS)<sup>7</sup> • Three-point seatbelts for all seating positions, pre-tensioners with force limiters for front and outboard rear seats • Automatic Locking Retractor/Emergency Locking Retractor (ALR/ELR) seatbelts for rear outboard seating positions • Emergency Locking Retractor (ELR) only for driver's seat • Height-adjustable front shoulder belt anchors • Child Restraint Seat (CRS) tether anchor brackets for rear outboard seating positions • Four-wheel ventilated power-assisted disc brakes • Electronic Controlled Braking (ECB) • Four-sensor, four-channel Anti-lock Braking System (ABS) • Vehicle Dynamics Integrated Management (VDIM)<sup>6</sup> • Vehicle Stability Control (VSC)<sup>6</sup> • Traction Control (TRAC) • Brake Assist<sup>5</sup> • Electronic Brakeforce Distribution (EBD) • Direct Tire Pressure Monitor System<sup>8</sup> • Rigid body structure with front and rear crumple zones • Side-impact door beams • Reinforcements in pillars and doorsills • Impact-dissipating upper interior trim • Collapsible steering column • High-Intensity Discharge (HID) headlamps with dynamic auto leveling • Dual-swivel Adaptive Front Lighting System (AFS) • Headlamp washers (LS 460 L) • Daytime running lights • Integrated foglamps • LED taillamps • Water-repellent front-door glass • Rain-sensing intermittent windshield wipers with mist cycle • Rear window defogger with auto-off timer • Power-adjustable, auto-folding outside mirrors with defoggers, puddle lamps and auto tilt-down in reverse • Vehicle theft-deterrent and engine immobilizer system • Emergency interior trunk release • First aid kit • Tool kit

### STANDARD LUXURY FEATURES

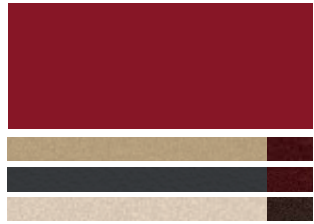
Medium brown walnut, dark gray bird's-eye maple or dark brown ash burl interior wood trim • Leather-trimmed interior • Wood- and leather-trimmed steering wheel • Wood- and leather-trimmed heated steering wheel (LS 460 L) • Steering-wheel-mounted audio, brake hold and display controls • Power tilt-and-telescopic steering column • Wood- and leather-trimmed shift knob • TFT (Thin Film Transistor) multi-information display • Voice activated HDD Navigation System<sup>15</sup> with backup camera,<sup>18</sup> Bluetooth<sup>®</sup> technology,<sup>16</sup> XM<sup>®</sup> Satellite Radio<sup>14</sup> and real-time traffic capability<sup>15</sup> (LS 460 L) • Lexus 10-speaker Premium Sound System with Digital Sound Processor, Automatic Sound Levelizer (ASL) and in-dash, single-feed, six-disc CD auto-changer • Auxiliary iPod<sup>®25</sup>/MP3/Windows Media<sup>®</sup> Audio (WMA) port • In-glass antenna with FM-diversity system (LS 460) • Shark-fin antenna (LS 460 L) • 16-way driver's (including dual-function lumbar) and 12-way front passenger's (including lumbar) power seats • Climate-comfort front seats with heat/cool knob (LS 460 L) • Height-adjustable headrests for all seats • Lexus Memory System to control power driver's seat (except lumbar), outside mirrors and steering wheel • Dual-zone automatic climate control with interior air filter, smog sensor and automatic recirculation mode • Power tilt-and-slide moonroof with one-touch open/close and sliding sunshade • Power windows with one-touch auto open/close feature • Exterior glass with UV reduction • Laminated side glass (LS 460 L) • Remote-linked window and moonroof opening • Retained accessory power for moonroof and windows • Power rear sunshade (LS 460 L) • Electrochromic (auto-dimming) inside rearview mirror and outside mirrors • Power door locks • Power door closers (LS 460 L) • Power rear trunk open/close (LS 460 L) • Cruise control • SmartAccess<sup>26</sup> with push-button Start/Stop • Center console with sliding armrest and storage bin • HomeLink<sup>®</sup> universal transceiver to operate compatible garage, gate, home lighting and home security systems • Illuminated entry system • Electroluminescent instrumentation • Illuminated interior electronic trunk-lid and fuel-filler door releases • Front- and rear-lighted vanity mirrors • Automatic on/off projector-beam headlamps with auto-off delay • Electronic parking brake • Carpeted floor mats

<sup>2,3,5,6,7,8,14,15,16,18,24,25,26</sup> See page 14 for more information.

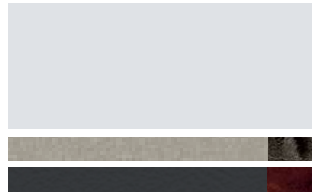


# 2008 LEXUS LS Colors

## EXTERIOR COLORS



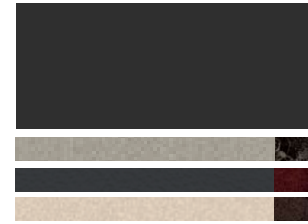
**NOBLE SPINEL MICA**  
Cashmere, Black  
or Alabaster Leather



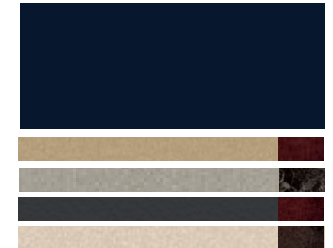
**MERCURY METALLIC**  
Light Gray or Black Leather



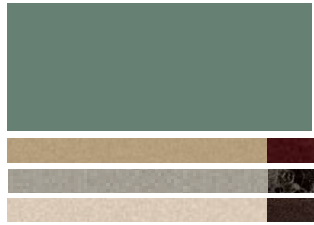
**GOLDEN ALMOND METALLIC**  
Cashmere or Alabaster Leather



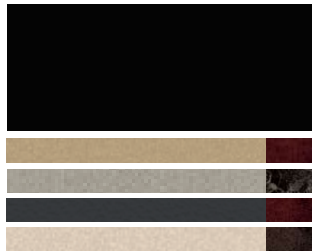
**SMOKY GRANITE MICA**  
Light Gray, Black or Alabaster Leather



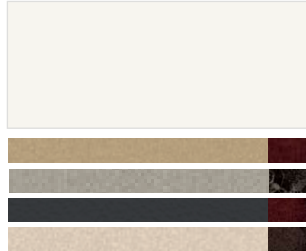
**BLACK SAPPHIRE PEARL**  
Cashmere, Light Gray, Black  
or Alabaster Leather



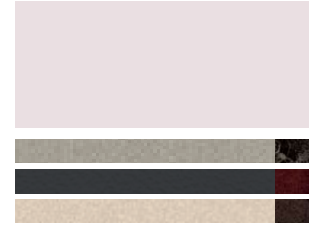
**VERDIGRIS MICA**  
Cashmere, Light Gray  
or Alabaster Leather



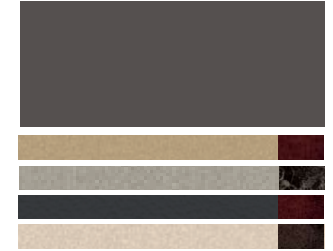
**OBSIDIAN**  
Cashmere, Light Gray, Black  
or Alabaster Leather



**STARFIRE PEARL**  
Cashmere, Light Gray, Black  
or Alabaster Leather

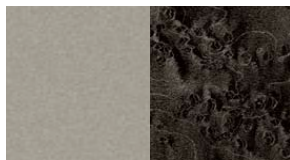


**OPALINE PEARL**  
Light Gray, Black or Alabaster Leather

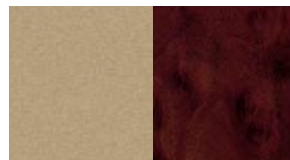


**TRUFFLE MICA**  
Cashmere, Light Gray, Black  
or Alabaster Leather

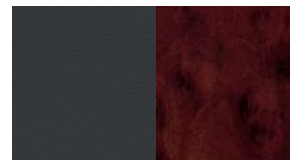
## INTERIOR COLORS



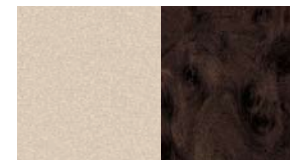
Light Gray Leather with  
Dark Gray Bird's-Eye Maple



Cashmere Leather with  
Medium Brown Walnut



Black Leather with  
Medium Brown Walnut



Alabaster Leather with  
Dark Brown Ash Burl

See your Lexus dealer for exact vehicle colors.



# 2008 LEXUS LS Warranty

## WARRANTY

Four-year/50,000-mile Lexus Limited Warranty. Six-year/70,000-mile Powertrain Warranty. Six-year/unlimited-mileage Corrosion Perforation Warranty. All warranties with zero deductible. See the *LS Warranty and Services Guide* at your Lexus dealer for details.

## FOOTNOTES & DISCLAIMERS

**1.** The Advanced Parking Guidance System requires driver brake control. Always look around outside the vehicle and use mirrors to confirm clearance. **2.** Ratings achieved using the required premium unleaded gasoline with an octane rating of 91 or higher. If premium fuel is not used, performance will decrease. **3.** Performance figures are for comparison only and were obtained with prototype vehicles by professional drivers using special safety equipment and procedures. Do not attempt. **4.** The Pre-Collision System is designed to help reduce the crash speed and damage in certain frontal collisions only. It is not a collision avoidance system and is not a substitute for safe and attentive driving. System effectiveness depends on many factors, such as speed, driver input and road conditions. Please see your *Owner's Manual* for further information. **5.** Brake Assist is designed to help the driver take full advantage of the benefits of ABS. It is not a substitute for safe driving practices. Braking effectiveness also depends on proper brake-system maintenance and tire and road conditions. **6.** Vehicle Stability Control (VSC) and Vehicle Dynamics Integrated Management (VDIM) are electronic systems designed to help the driver maintain control under adverse conditions. They are not substitutes for safe driving practices. Factors including speed, road conditions and driver steering input can all affect whether VSC and VDIM will be effective in preventing a loss of control. Please see your *Owner's Manual* for further details. **7.** All the airbag ("AB") systems are Supplemental Restraint Systems. All ABs (if installed) are designed to inflate only under certain conditions and in certain types of severe collisions: frontal and knee ABs typically inflate in frontal collisions; side and side curtain ABs in side collisions; Roll-Sensing Curtain ABs at a severe tilt degree, roll or lateral G-force. In all other accidents, the ABs will not inflate. To decrease the risk of injury from an inflating AB, always wear seatbelts, sit upright in the middle of the seat as far back as possible and do not lean against the door. Do not put objects in front of an AB or around the seatback. Do not use a rearward-facing child seat in any front passenger seat. The force of an inflating AB may cause serious injury or death. Please see your *Owner's Manual* for further information/warnings. **8.** The Lexus Tire Pressure Monitor System alerts the driver when tire pressure is critically low. For optimal tire wear and performance, tire pressure should be checked regularly with a gauge; do not rely solely on the monitor system. Please see your *Owner's Manual* for details. **9.** Contact with the Lexus Link® Call Center is limited by cellular connection availability and reception of GPS satellite signals, so sometimes you may be unable to contact the Call Center or receive emergency service support. Lexus Link system includes one year Safe & Sound service. Enrollment and Subscription Service Agreement required. Additional service packages are available for additional charges. **10.** Legrest may not fully recline based on height of rear-seat passenger. **11.** If legrest is in use, seating capacity could be reduced from four to three. **12.** Mark Levinson is a registered trademark of Harman International Industries, Inc. **13.** Continuous average power, all channels driven, at less than 0.1% THD; 20-20,000 Hz. **14.** Functioning XM® Satellite Radio requires a compatible receiver and monthly service fee. Please see your Lexus dealer for further details. Reception of the satellite signal may vary depending on location. All fees and programming subject to change. Subscriptions subject to the terms and conditions available at [www.xmradio.com](http://www.xmradio.com). Available only in the 48 contiguous United States. **15.** The Navigation System is designed to assist in locating an address or point of interest. XM® NavTraffic™ requires a monthly service fee and is designed to provide real-time traffic or alternative routes of travel. Discrepancies may be encountered between the system and your actual location. Road system changes may affect the accuracy of the information provided. Rely on your common sense to decide whether to follow a specified route. Detailed coverage not available in every city or roadway. Periodic Navigation updates available at an additional cost. Please see your *Navigation System Owner's Manual* for further details. **16.** The Bluetooth® technology phones listed on [lexus.com](http://lexus.com) have been tested for compatibility with Lexus vehicles. Performance will vary based on phone software version, coverage and your wireless carrier. Phones are warranted by their manufacturer, not Lexus. **17.** High-friction brakes require periodic inspection and measurement as outlined in the *Warranty and Services Guide*. The pads and rotors are expected to experience greater wear than conventional brakes. Pad life may be less than 20,000 miles, and brake rotor life may be less than 50,000 miles, depending on driving conditions. **18.** The backup camera, available only with the Navigation System, does not provide a comprehensive view of the rear area of the vehicle. You should also look around outside your vehicle and use your mirrors to confirm rearward clearance. Cold weather will limit effectiveness and view may become cloudy. **19.** 18-in or 19-in tires are expected to experience greater tire wear than conventional tires. Tire life may be substantially less than 15,000 miles, depending on driving conditions. **20.** The OEM wheel size (19-in for Touring Model/18-in for all others) cannot be changed without risking damage to the vehicle. If you replace the wheels, be sure they are the same size as the original wheels. **21.** Dynamic Radar Cruise Control is designed to assist the driver and is not a substitute for safe and attentive driving practices. Please see your *Owner's Manual* for important cautions and instructions. **22.** Headphones are for passenger use only. Do not use while operating vehicle. **23.** Trunk space is reduced with this package. See specifications. **24.** 2008 EPA-estimated mpg. Actual mileage will vary. **25.** iPod is a registered trademark of Apple Inc. **26.** The SmartAccess system may interfere with some pacemakers or cardiac defibrillators. If you have one of these medical devices, please talk to your doctor to see if you should deactivate this system. **27.** The engine immobilizer is a state-of-the-art anti-theft system. The key transmits an electronic code to the vehicle. The engine will only start if the code in the transponder chip inside the key matches the code in the vehicle's immobilizer. Because the transponder chip is embedded in the key, it can be costly to replace. If you lose a key, your Lexus dealer can help, or you can find a qualified independent locksmith to perform high-security key services at [www.aloa.org](http://www.aloa.org).

\*Lexus strives to build vehicles to match customer interest and thus they typically are built with popular options and option packages. Not all options/accessories/packages are available separately and some may not be available in all regions of the country. See [lexus.com](http://lexus.com) for information about options/accessories/packages commonly available in your area. If you would prefer a vehicle with no or different options, contact your dealer to check for current availability or the possibility of placing a special order.

Specifications, features, equipment, technical data, performance figures, options, and color and trim are based upon information available at time of posting, are subject to change without notice, are for mainland U.S.A. vehicles and may differ in the state of Hawaii, Puerto Rico, the U.S. Virgin Islands and in other regions. Some vehicles shown with optional equipment. Optional equipment listed may not be available separately or in all regions. See your Lexus dealer for details. Lexus reminds you to wear seatbelts, secure children in rear seat, obey all traffic laws and drive responsibly.

For more information, call 800-USA-LEXUS (872-5398). To learn more about your financing options, contact your Lexus dealer or call Lexus Financial Services at 800-874-7050.

All photographs appearing in this e-brochure are the copyrighted property of the photographers contracted by or on behalf of Lexus and may not be reproduced in any way whatsoever without prior written permission from both Lexus and the applicable photographer(s) or their authorized agent(s).

©2007-2008 Lexus, a Division of Toyota Motor Sales, U.S.A., Inc. All information contained herein applies to U.S. vehicles only.

