

2022

PALISADE



Dream big. Journey on.

If you're the type that makes big plans, put them in motion with the 2022 Hyundai Palisade. Available in either 7- or 8-passenger models, the 3-row Palisade ensures everyone in your party has plenty of luxurious room.

With a towing capacity of up to 5,000 pounds,¹ up to 86.4 cubic feet of usable cargo space and the availability of HTRAC All Wheel Drive, Palisade is serious about serious adventures.

Equal parts comfort and control, Palisade lets you take every road with confidence. It's also big on versatility – check out the easy 3rd-row access offered by one-touch sliding 2nd-row seats, along with the power folding/reclining seating that's available in the 3rd row. The

availability of premium features like a hands-free smart liftgate, wireless device charging and seven USB charging ports is complimented by an arsenal of Hyundai SmartSense safety technologies that allow you to enjoy safer, more secure driving. Together with generous amounts of advanced high-strength steel in its construction, SmartSense creates a level of security that helped Palisade earn one of the industry's highest safety honors – a 2021 Top Safety Pick+ rating.²

Adding to your peace of mind: Palisade includes America's Best Warranty and Hyundai Complimentary Maintenance for 3 years or 36,000 miles, whichever comes first.³ So go ahead. Dream big and let your journey begin.



¹Towing capacity with trailer brakes. ²To qualify for 2021 TOP SAFETY PICK+, a vehicle must earn good ratings in the driver-side small overlap front, passenger-side small overlap front, moderate overlap front, side, roof strength and head restraint tests. It also must earn an advanced or superior rating for vehicle-to-vehicle and vehicle-to-pedestrian front crash prevention and come with standard acceptable- or good-rated headlights. For details, visit www.iihs.org. ³Complimentary maintenance includes Hyundai-approved oil and oil filter change (except for electric vehicles and fuel cell electric vehicles) plus tire rotation at normal factory-scheduled maintenance intervals for 3 years or 36,000 miles, whichever comes first. More frequent maintenance due to severe driving or conditions is excluded. Offer valid only for new 2020-2022 Hyundai models purchased or leased on or after February 1, 2020. See your Hyundai dealer for further details and limitations.



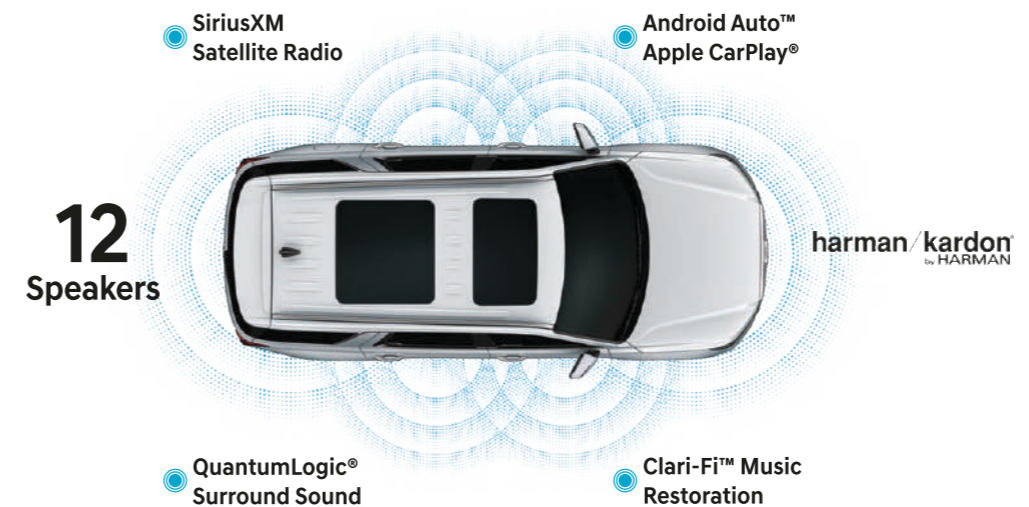
PALISADE Calligraphy in Light Beige Nappa Leather

Sit pretty.

Palisade elevates the modern aesthetics of Hyundai design – literally. Take your seat inside, and the high seating position gives you a commanding view. If you're in the driver seat, all the information you need is presented within one continuous panel. On Palisade Limited and Calligraphy, that's a 12.3" digital instrument display front and center and 10.25" high-resolution split-screen navigation system to your right. A full-color Heads-up Display can also project critical driving data onto the windshield for at-a-glance information.

Ventilated front seats and ventilated 2nd-row captain's chairs help extend the special treatment Palisade Limited and Calligraphy passengers enjoy. The Nappa leather trim is buttery-soft – on the Calligraphy, it extends to a distinctive quilted pattern on the door panels. There's also an expansive dual sunroof that bathes the interior with natural light.

Ready to rock? An available Harman Kardon® premium audio system fills the cabin with your favorite music. QuantumLogic® Surround is onboard to transform your Palisade into a multi-channel sound stage. The music sounds powerful and sparkling. And thanks to Clari-Fi™ Music Restoration Technology, sound qualities lost in compressed digital music or streaming satellite radio are magically restored.



Ventilated front seats



Heads-up Display



2nd-row side-window sunshades



2nd-row captain's chairs



¹The hands-free smart liftgate will open when your Proximity Key is within 3 feet of the detection area for at least 3 seconds. Radio transmitters and other vehicle smart keys may interfere with normal operation. Standard on Limited and Calligraphy, available on SEL. Please consult your Owner's Manual for details. ²Qi wireless charging function is based on smartphone compatibility and/or specific accessory cases.

PALISADE Calligraphy in Light Beige Nappa Leather

Take your home on the road.

Palisade is so versatile, comfortable and connected inside, it's like you never left home. Pick a seat to settle into, then sit back and relax in the lap of luxury. Up front, the legroom is exceptional – even greater than some full-size SUVs. Heated 8-way power-adjustable front seats are available with ventilation and power lumbar support.

In back, a one-touch sliding 2nd row makes it easy to get in and out of the 3rd row. And when you want to quickly make room for cargo, Palisade is available with a 3rd row that features power fold and recline. The easy-to-fold rear seats create a cavernous cargo space that, together with an available hands-free smart liftgate,¹ opens your Palisade to endless possibilities.

Dedicated climate control vents and a roof vent diffuser quietly stream an evenly distributed flow of air to your rear passengers. All of the cabin air is freshened by an available CleanAir ionizer. Need to get power to your people? Seven USB charging ports and a wireless charging pad² are available on Palisade SEL and standard on Limited and Calligraphy models.

A conversation mirror and available Driver Talk in-car intercom make it easy for the captain to speak to 3rd-row passengers from the flight deck. There's even a feature called Rear Seat Quiet Mode that mutes the rear speakers for sleepy passengers.



Split-folding 2nd- and 3rd-row seating



Reconfigure on the fly.

Split-folding 2nd- and 3rd-row seats let you quickly reconfigure the seating and cargo areas of your Palisade for your next adventure. The 3rd-row power-folding seats can be controlled from Palisade's front touchscreen display or a button in the rear cargo area.



Driver Talk in-car intercom



2nd-row USB charge ports & temperature controls



Surround View Monitor



Height-adjustable hands-free smart liftgate



*EPA estimates with front-wheel drive for comparison only. Mileage may vary. Your actual mileage will vary with options, driving conditions, driving habits and the vehicle's condition.

PALISADE Calligraphy in Moonlight Cloud

Welcome to the art of personalized performance.

With a feature called Drive Mode Select, you can choose how your Palisade feels to drive. Want performance thrills? Simply turn the Drive Mode knob on the center console to Sport, and your Palisade sharpens its steering and throttle response. Feel like taking it easy? Select Comfort mode, and your Palisade instantly adjusts so the engine, transmission and other systems favor a smoother response.

Maybe you just like taking it easy on gas? Choose Eco mode, and your Palisade is set up for peak fuel efficiency. Driving on snow-covered roads? The system's Snow mode calibrates AWD traction for wintry driving conditions.

Whatever mode you choose, the power you feel pours from a smooth push-button 8-speed automatic transmission and innovative 3.8L GDI V6 engine that generates up to 291 horsepower with an EPA-estimated 26 MPG on the highway! The HTRAC All Wheel Drive available with all trim levels includes Downhill Brake Control, which helps maintain traction when you're descending an incline without having to press the brake pedal.



Level Headed.

The optimized geometry of a multi-link rear suspension helps ensure you're in control through curves and composed over rough roads. Upgrade Palisade's stylish 18" alloy wheels to its available 20" wheels, and the rear suspension includes an auto-leveling feature.



Blind-Spot View Monitor



Shift-by-Wire push-button gear selection

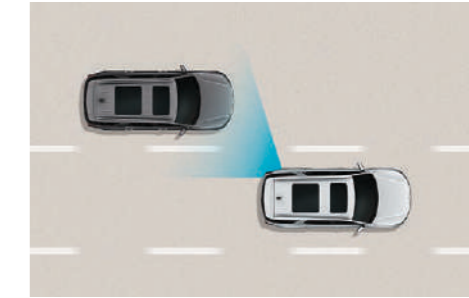
Surround yourself with safety.

Hyundai SmartSense technologies help protect you from every angle – whether you’re negotiating frantic freeways, urban jungles or winding mountain roads.¹ Forward Collision-Avoidance Assist with Pedestrian Detection² and High Beam Assist scan the road ahead. Lane Following Assist,³ together with features like Blind-Spot Collision-Avoidance Assist⁴ and Safe Exit Assist,⁵ help monitor your Palisade’s flanks. Behind you, a rearview camera

and Rear Cross-Traffic Collision-Avoidance Assist technology⁶ have your back. Palisade Limited and Calligraphy offer two more innovations: A Surround View Monitor that helps manage tricky parking maneuvers,⁷ and a Blind-Spot View Monitor that helps negotiate lane changes by showing views of either blind spot on Palisade’s instrument display after you activate the turn signal.⁸

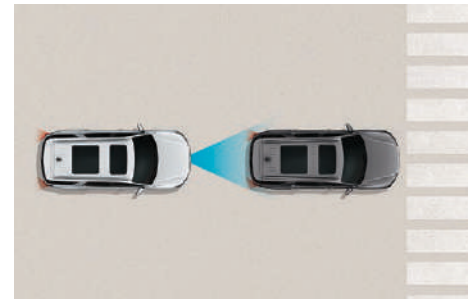


2021 Hyundai Palisade¹²



Blind-Spot Collision-Avoidance Assist

If your Palisade detects a vehicle in your blind spot while your turn signal is on, it alerts the driver and automatically applies light braking before you change lanes to help avoid a collision. An available Blind-Spot View Monitor displays video from the side-view cameras in your instrument cluster.



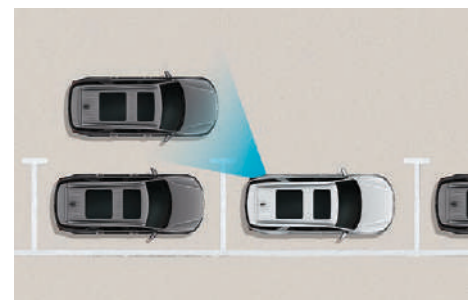
Forward Collision-Avoidance Assist

When the forward camera and/or radar detect a vehicle or pedestrian in your path, your Palisade warns you of a potential collision. If you do not begin stopping in time, the system will apply emergency braking automatically.



Rear Cross-Traffic Collision-Avoidance Assist

Backing out of a parking space and wondering whether there’s cross traffic coming your way? This feature warns you of another vehicle that is detected to be approaching from the side. If necessary, your Palisade automatically applies braking to help prevent a collision.

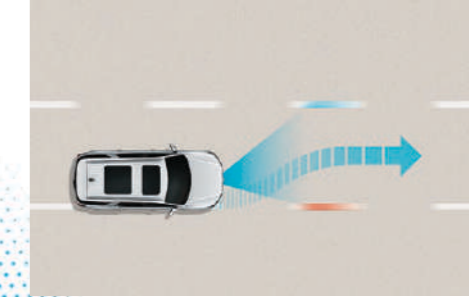


Safe Exit Assist | Rear Occupant Alert

After parking, the Safe Exit Assist feature issues an alert when a vehicle is detected to be approaching from behind, letting the driver know it may not be safe for passengers to open the street-side door. Another feature – Ultrasonic Rear Occupant Alert – is available to help ensure your family’s safety, even after you’ve exited your Palisade.⁹

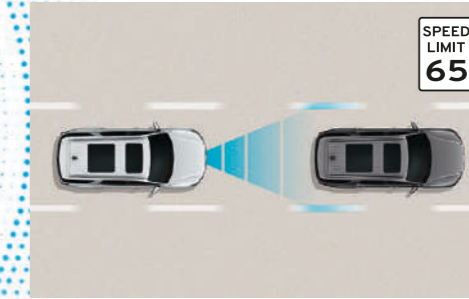
<< SmartSense Around Town

SmartSense On The Highway >>



Lane Following Assist

Using the front-view camera to detect lane markers on the pavement, this feature offers subtle steering corrections to help keep you centered in your lane. Even when lane markings aren’t visible, your Palisade can determine a virtual path based on movements of the preceding vehicle.



Highway Driving Assist

Acting as your copilot on the highway, this available feature helps keep you centered in your lane while maintaining a set speed and distance from the vehicle in front. It uses navigation map data to automatically adjust for changing speed limits and reduce your speed when it detects you’re approaching a curve in the road.¹⁰

¹Safety features vary by model. For details, refer to the Features chart in the back of this brochure or visit HyundaiUSA.com. ²Forward Collision-Avoidance Assist with Pedestrian Detection is intended to be a supplement to safe driving practices. The system is not designed to detect certain stationary objects such as trees or poles, and may not detect all vehicles or pedestrians under certain conditions. The system is a driver assistance system and is not a substitute for safe driving. The driver is responsible for being attentive and maintaining control of the vehicle, and should not wait for the system’s alerts before braking as there may not be sufficient time to brake safely. See Owner’s Manual for further details and limitations. ³Lane Following Assist (LFA), when actively engaged with Smart Cruise Control or Highway Driving Assist, helps keep your vehicle centered in its lane when the lane markings are clearly visible on the road. Lane Following Assist will not work under all circumstances and will not prevent loss of control. Lane Following Assist is a supplemental assist, and does not replace the need for extreme care and attention by the driver. See Owner’s Manual for further details and limitations. ⁴Blind-Spot Collision-Avoidance Assist (BCA) helps warn you of other cars in the blind spot region and may apply braking to help prevent an unsafe lane change. It also helps prevent collisions when exiting parallel parking spots by alerting the driver to a potential hazard. Never rely exclusively on BCA, as it is not a substitute for attentive driving. Always look over your shoulder and use your mirrors to confirm clearance. There are limitations to the function, detection, range and clarity of the system. BCA may not function correctly if one or more of the parking sensors is damaged, dirty or covered, or if weather conditions (heavy rain, snow or fog) are interfering

with sensor operation. See Owner’s Manual for further details and limitations. ⁵When parked, Safe Exit Assist (SEA) can alert occupants planning to exit the vehicle when another vehicle is detected to be approaching from behind. When child locks are active, SEA prevents the disablement of the child locks if a vehicle approaching from behind is detected. All doors must be closed for Safe Exit Assist to operate. Functionality is retained for 10 minutes after the ignition is turned off. Opening the door switches Safe Exit Assist off. See Owner’s Manual for further details and limitations. ⁶Rear Cross-Traffic Collision-Avoidance Assist (RCCA) is designed to notify drivers of approaching cross traffic behind their vehicle. When another vehicle is detected while you are backing out of a parking spot, it provides audible and visual display warnings and applies braking if it senses a collision is imminent. RCCA is active when the vehicle is in reverse gear and backing at a speed less than 6 mph. It only engages during the first activation of reverse gear from park and may not detect all vehicles, depending on the size, angle, distance and speed of the other vehicle. Never rely exclusively on RCCA. Always look over your shoulder and use your mirrors to confirm rear clearance. There are limitations to the function, detection, range and clarity of the system. See Owner’s Manual for further details and limitations. ⁷Surround View Camera System (SVCS) is a parking support system. SVCS cannot completely eliminate blind spots, may not detect every object and does not warn of moving objects. Always check your surroundings before moving your vehicle. See Owner’s Manual for further details. ⁸The Blind-Spot View Monitor (BVM) assists the driver in changing lanes by providing a live view of the blind spots on either side of the vehicle and an audible alert if another vehicle is detected. Turn signal must be activated, and other system limitations apply. Do not rely exclusively on BVM. It is the driver’s responsibility to be aware of the surroundings and ensure it is clear before changing lanes or directions. See Owner’s Manual for more information. ⁹When the vehicle is parked and the engine has been turned off, Ultrasonic Rear Occupant Alert (UROA) can help alert the driver if it detects movement from a child or pet. Upon exiting and locking the vehicle, the UROA may provide visual, audible, and/or BlueLink alerts if the interior sensors detect movement. UROA is not a substitute for driver attentiveness. Never leave a child or pet unattended in a vehicle. BlueLink notification requires a properly equipped vehicle with an active BlueLink account. See Owner’s Manual for further details and limitations. ¹⁰Highway Driving Assist (HDA) is for highway use only and can help maintain a safe distance from the vehicle ahead and help keep your vehicle centered in its lane when lane markings are clearly visible on the road. HDA should not be used in poor weather, heavy or varying traffic, or on winding or slippery roads. HDA will not work under all circumstances and will not prevent loss of control. Driver remains responsible to slow or stop the vehicle to avoid a collision. See Owner’s Manual for further details and limitations. ¹¹Government 5-Star Safety Ratings are part of the National Highway Traffic Safety Administration’s (NHTSA) New Car Assessment Program (nhtsa.gov). ¹²To qualify for 2021 TOP SAFETY PICK+, a vehicle must earn good ratings in the driver-side small overlap front, passenger-side small overlap front, moderate overlap front, side, roof strength and head restraint tests. It also must earn an advanced or superior rating for vehicle-to-vehicle and vehicle-to-pedestrian front crash prevention and come with standard acceptable- or good-rated headlights. For details, visit www.iihs.org.

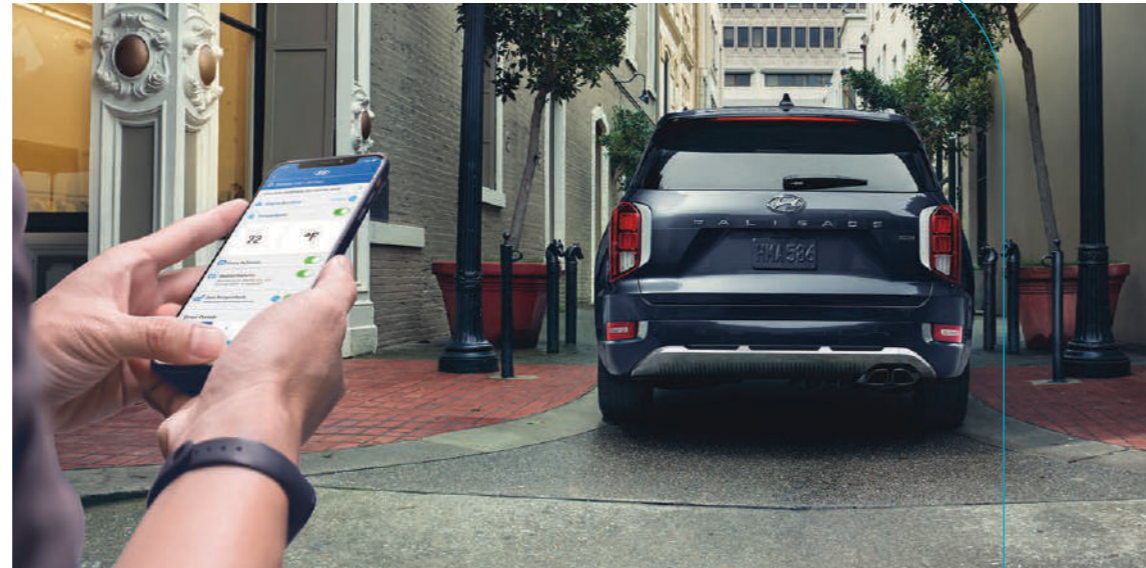
Staying connected starts with Hyundai Bluelink.

Think of your Palisade as an extension of your digital life. Our Hyundai Bluelink® turns your compatible smartphone into a sophisticated remote control.¹ By downloading the free MyHyundai app, your smartphone can lock/unlock your Palisade's doors, start the engine – even choose a memory seat setting – before you walk out the door.²

Bluelink Guidance lets you search, download and navigate to addresses and points of interest using voice commands with Palisade's available navigation system, or your smartphone before entering your Palisade.³ The 10.25" touchscreen navigation display features a split-screen that lets you view both maps and music at a glance. Junction view lane guidance and subscription-free traffic flow and incident data help alleviate the stresses of your commutes.

Finally, there's Bluelink Connected Care. Complimentary for your first three years, it offers exceptional peace of mind. Wherever you may roam, operators are standing by to provide emergency roadside assistance in the event of an accident where airbags are deployed.⁴

More good news – Apple CarPlay® and Android Auto™ come standard on every Palisade model.⁵ And Bluetooth® music streaming lets you connect two phones to the audio system simultaneously. To keep everyone powered up without the clutter of cords, Palisade is available with wireless device charging.



Automatic Emergency Assistance

Bluelink Connected Care offers 24/7 SOS Emergency Assistance as well as Automatic Collision Notification that calls for help if you're in an accident where your vehicle's airbags deploy.



On-Demand Diagnostics

Run vehicle diagnostics from your MyHyundai mobile app, report issues at the press of a button, and receive Monthly Vehicle Health Reports and maintenance reminders by email.



Driver Profile Management

Save your navigation searches, radio presets and seating/mirror preferences to your Bluelink account, and they can be remotely updated and pushed to your Palisade.



Remote Vehicle Controls

Use your smartphone, smart speaker or wearable device to remotely start your Palisade's engine, unlock the doors, set the cabin temperature, and much more.



Destination Send-to-Car

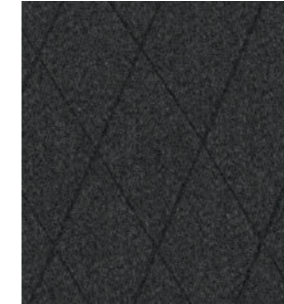
Use your smartphone to find restaurants or points of interest, then send the destination to Palisade's available navigation system for driving directions before you slip behind the wheel.



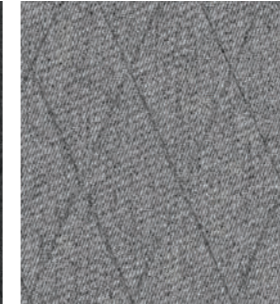
Remote Vehicle Status

Wondering how much fuel is in your tank? If your Palisade's doors are unlocked? Your MyHyundai app knows the answers to these questions and more.

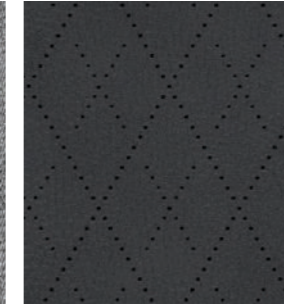
Interior Colors



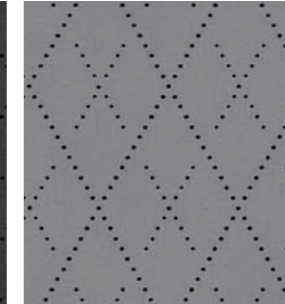
Black Cloth
SE / SEL



Gray Cloth
SE / SEL



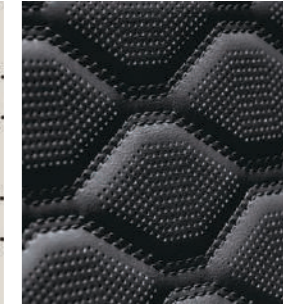
Black Leather
SEL Premium Package



Gray Leather
SEL Premium Package



Light Beige Leather
SEL Premium Package

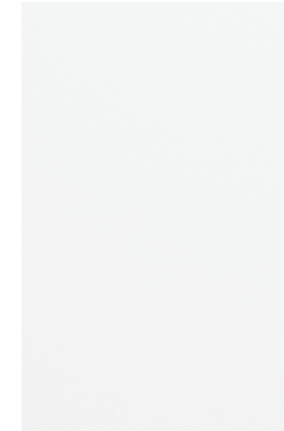


Black Nappa Leather
Limited/Calligraphy



Light Beige Nappa Leather
Limited/Calligraphy

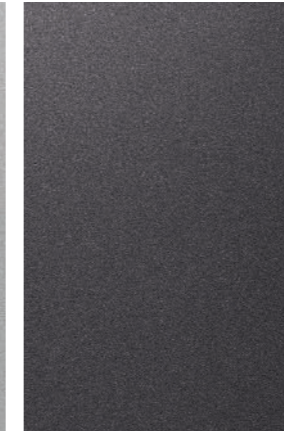
Exterior Colors



Hyper White



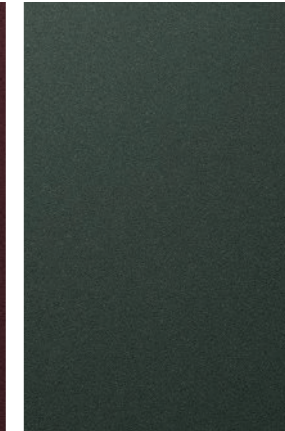
Typhoon Silver



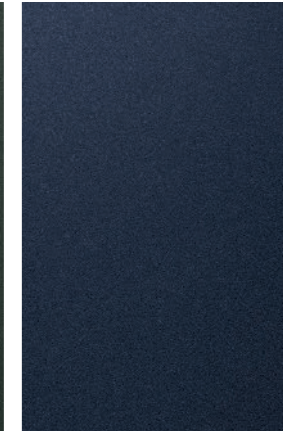
Steel Graphite



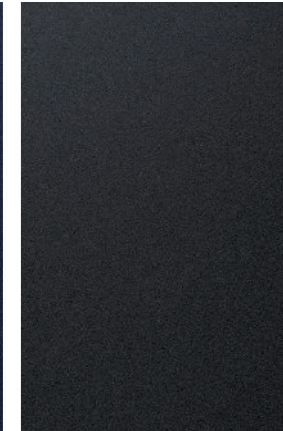
Sierra Burgundy



Rainforest



Moonlight Cloud



Abyss Black Pearl

Wheels



SE
18" Alloy Wheel



SEL Standard
18" Alloy Wheel



SEL Packages/Limited
20" Alloy Wheel



Calligraphy
20" Alloy Wheel

PALISADE
EPA MPG Estimates (City/Highway/Combined)¹

19/26/22 MPG | FWD
8-speed AT with SHIFTRONIC®

19/24/21 MPG | AWD
8-speed AT with SHIFTRONIC®

¹EPA estimates for comparison only. Mileage may vary. Your actual mileage will vary with options, driving conditions, driving habits and the vehicle's condition.

¹Not available with Palisade SE. 2022 Palisade vehicles include three years of the Bluelink Connected Care, Remote and Guidance (factory-equipped navigation required) packages. All trials require an active Bluelink subscription agreement subject to the Connected Services Terms and Conditions. Three-year term starts from the new vehicle date-of-first-use, is available for new vehicle purchases and leases, and is transferable to subsequent owners subject to the Terms and Conditions. Only use Bluelink and corresponding devices when safe to do so. Cellular and GPS coverage is required. Features, specifications, and fees are subject to change. For further details and limitations, visit HyundaiUSA.com or your authorized Hyundai dealer. ²Requires active Bluelink subscription with Remote package. Not available on all models. Requires vehicles equipped with push button start. Remote climate control available on properly equipped models with fully automatic temperature control. Remote stop only available when in remote start mode. ³Requires navigation-equipped vehicle and active Bluelink subscription with Guidance package. ⁴Bluelink agents will contact existing emergency service responders. ⁵Apple is a registered trademark of Apple Inc. Android Auto™ is compatible with Android™ phones running Android 5.0 or higher. Android Auto may not be available on all devices. Additional apps may be required. Android and Android Auto are trademarks of Google LLC.

PALISADE SE

3.8L GDI V6 Engine

hp 291
lb-ft 262



Popular Features
Forward Collision-Avoidance Assist with Pedestrian Detection
Blind-Spot Collision-Avoidance Assist
Rear Cross-Traffic Collision-Avoidance Assist
5 USB charge ports – (3) front row and (2) 2nd row
8-passenger seating
Parking Distance Warning – Reverse
8" AM/FM/HD Radio™ Display Audio system
Wireless Apple CarPlay® and Android Auto™
2nd-row manual temperature controls
Rear Seat Quiet Mode

PALISADE Limited

3.8L GDI V6 Engine

hp 291
lb-ft 262



Popular Features
Wide dual sunroof with sliding sunshade
12.3" digital instrument cluster
Harman Kardon® premium audio with 12 speakers
Full color Heads-up Display
Premium Nappa leather seating surfaces
Ventilated front seats and 2nd-row captain's chairs
Driver seat power thigh support and 4-way lumbar support
Surround View Monitor Blind-Spot View Monitor
Rain-sensing windshield wipers
Ambient interior lighting (adjustable – 64 colors)

PALISADE SEL

3.8L GDI V6 Engine

hp 291
lb-ft 262



Popular Features
Proximity Key entry with push button start
Key fob remote engine starter
8-way power driver seat with lumbar support
Leather-wrapped steering wheel
Dual automatic temperature control
Heated front seats
7-passenger seating with 2nd-row captain's chairs
Power tilt-and-slide sunroof
Auto-dimming rearview mirror with Homelink®
Roof side rails

PALISADE Calligraphy

3.8L GDI V6 Engine

hp 291
lb-ft 262



Popular Features
Exclusive grille and front bumper
Premium rear accent lighting
Premium side door garnish
Side mirror approach lights (puddle lamps)
10.25" navigation system and Highway Driving Assist
Perforated leather steering wheel
Quilted leather door panel inserts
Microfiber suede headliner
Premium cargo sill plate
Exclusive 20" alloy wheels

SEL Convenience Package	
Auto-leveling rear suspension	2nd-row side-window sunshades
Parking Distance Warning – Forward	Wireless device charging
Hands-free smart liftgate with auto open	Dual 3rd-row USB charge ports
7" color LCD instrument cluster display	115-volt power outlet
Ultrasonic Rear Occupant Alert	LED taillights
20" alloy wheels	Acoustic front side glass

SEL Premium Package [requires Convenience Package]	
Leather-trimmed seating surfaces	Heated 2nd-row seats
Premium dashboard and door armrests	Heated steering wheel
8-way power front passenger seat	3rd-row power folding/reclining seats
10.25" touchscreen navigation system	Bluelink® Connected Car System
Highway Driving Assist	SiriusXM Satellite Radio
Driver Talk in-car intercom	Integrated Memory System

SEL 8-Passenger Seating Option [requires Premium Package]	
2nd-row bench seating (replaces captain's chairs)	

HTRAC All Wheel Drive Option	
HTRAC All Wheel Drive	Downhill Brake Control
AWD Lock	Snow Mode

Exterior Dimensions	PALISADE
Wheelbase	114.2 in
Overall Length	196.1 in
Overall Width	77.8 in
Overall Height	68.9 in

Interior Dimensions	PALISADE
Headroom – front (w/sunroof)	40.7 (39.3) in
Headroom – 2nd row (w/sunroof) / 3rd row (w/sunroof)	40.1 (38.8) / 37.8 (37.2) in
Legroom – front / 2nd row / 3rd row	44.1 / 42.4 / 31.4 in
Shoulder Room - front / 2nd row / 3rd row	61.2 / 60.8 / 55.2 in
Passenger Volume	155.3 cu ft
Cargo Capacity – behind front seats	86.4 cu ft
Cargo Capacity – behind 2nd row / 3rd row	45.8 / 18.0 cu ft
Total Interior Volume	173.3 cu ft

PALISADE

Power & Handling	SE	SEL	Ltd	Calli
291 hp / 262 lb-ft, 3.8L Atkinson Cycle GDI V6 engine with Idle Stop & Go	●	●	●	●
8-speed automatic transmission (AT) with SHIFTRONIC® manual-shift mode	●	●	●	●
Paddle shifters and Shift-by-Wire push-button gear selector	●	●	●	●
Drive Mode Select	●	●	●	●
HTRAC All Wheel Drive with AWD lock and Downhill Brake Control	○	○	○	○
Electronic Parking Brake with Automatic Vehicle Hold	●	●	●	●
Multi-link independent rear suspension	●	●	●	●
Auto-leveling rear suspension	–	●	●	●
Trailer pre-wiring with heavy-duty transmission oil cooler	●	●	●	●
Trailer Sway Control	●	●	●	●

Exterior Features	SE	SEL	Ltd	Calli
Exclusive grille and front bumper	–	–	–	●
LED Daytime Running Lights Automatic on/off headlights	●	●	●	●
Low- and high-beam LED projector headlights with High Beam Assist	●	●	●	●
Premium rear accent lighting	–	–	–	●
LED taillights	–	●	●	●
Bodycolor heated power side mirrors with LED turn signal indicators	●	●	●	●
Side mirror approach lights (puddle lamps)	–	–	–	●
Satin chrome exterior door handles	–	●	●	●
Acoustic-laminated windshield, solar front glass and privacy rear glass	●	●	●	●
Rain-sensing windshield wipers	–	–	●	●
Roof side rails	–	●	●	●
Hands-free smart liftgate with auto open and adjustable height setting	–	●	●	●

Interior Features	SE	SEL	Ltd	Calli
Proximity Key entry with push button start and key fob remote engine start	–	●	●	●
3.5" LCD instrument cluster display	●	●	–	–
7" color LCD instrument cluster display	–	●	–	–
12.3" digital instrument cluster with selectable viewing modes	–	–	●	●
Full color Heads-up Display	–	–	●	●
Tilt-and-telescopic haptic steering wheel	●	●	●	●
Leather-wrapped steering wheel	–	●	●	–
Perforated leather-wrapped steering wheel	–	–	–	●
8-passenger seating (2 + 3 + 3)	●	○	–	–
7-passenger seating with 2nd-row captain's chairs and heated front seats	–	●	●	●
One-touch 2nd-row sliding seat for 3rd-row access	●	●	●	●
3rd-row power-folding/reclining seats	–	●	●	●
Dual automatic temperature control with CleanAir Ionizer	–	●	●	●
Diffused-air roof vents (2nd and 3rd row)	●	●	●	●
8-way power driver seat with 2-way lumbar support	–	●	–	–
8-way power driver seat with extendable thigh support and 4-way lumbar support	–	–	●	●

Interior Features	SE	SEL	Ltd	Calli
Leather-trimmed seating surfaces	–	●	●	●
Integrated Memory System for driver seat and side mirrors	–	●	●	●
8-way power front passenger seat	–	●	●	●
Microfiber suede headliner and quilted leather door panel inserts	–	–	–	●
Premium Nappa leather seating surfaces	–	–	●	●
Heated 2nd-row seats and heated steering wheel	–	●	●	●
Ventilated front seats and 2nd-row captain's chairs	–	–	●	●
Power tilt-and-slide sunroof	–	●	–	–
Wide dual sunroof with sliding sunshade	–	–	●	●
Ambient LED interior lighting (adjustable – 64 colors)	–	–	●	●
2nd-row side-window sunshades	–	●	●	●
Rear View Monitor with Parking Guidance	●	●	●	●
Smart Cruise Control with Stop & Go	●	●	●	●

Advanced Safety	SE	SEL	Ltd	Calli
Forward Collision-Avoidance Assist with Pedestrian Detection	●	●	●	●
Lane Keeping Assist and Lane Following Assist	●	●	●	●
Rear Occupant Alert	●	●	–	–
Ultrasonic Rear Occupant Alert	–	●	●	●
Blind-Spot Collision-Avoidance Assist	●	●	●	●
Rear Cross-Traffic Collision-Avoidance Assist	●	●	●	●
Safe Exit Assist	●	●	●	●
Highway Driving Assist	–	●	●	●
Parking Distance Warning – Reverse	●	●	●	●
Parking Distance Warning – Forward	–	●	●	●
Blind-Spot View Monitor and Surround View Monitor	–	–	●	●

Audio & Connected Car Technology	SE	SEL	Ltd	Calli
8" AM/FM/HD Radio™ Display Audio system	●	●	–	–
10.25" touchscreen navigation system and SiriusXM Satellite Radio	–	●	●	●
Harman Kardon® 12-speaker premium audio with QuantumLogic® Surround and Clari-Fi™ Music Restoration Technology	–	–	●	●
Wireless device charging	–	●	●	●
Android Auto™ and Apple CarPlay®	●	●	●	●
Wireless Android Auto™ and Apple CarPlay® (N/A with SEL Premium Package)	●	●	–	–
Bluelink® Connected Car System (3 years complimentary)	–	●	●	●
Driver Talk in-car intercom	–	●	●	●
Rear Seat Quiet Mode	●	●	●	●
Three front-row and dual 2nd-row USB charge ports	●	●	●	●
Dual 3rd-row USB charge ports and 115-volt power outlet	–	●	●	●
Bluetooth® hands-free phone system with wireless audio streaming	●	●	●	●
Multiple Bluetooth® device connection (up to 2 devices)	●	●	●	●

● Standard ○ Optional ● Convenience Package ● Premium Package – Not Available Ltd=Limited Trim Calli=Calligraphy Trim



Hyundai Hope On Wheels®

Helping Kids Fight Cancer Since 1998



Hope makes every Hyundai better.

Each time we sell a Hyundai, a portion goes to Hyundai Hope On Wheels® to help find a cure for childhood cancer. Over the last 23 years, Hyundai Hope On Wheels has donated more than \$185 million. Hope is our greatest feature. And it comes standard on every Hyundai. For more information, please visit HyundaiHopeOnWheels.org.



America's Best Warranty

POWERTRAIN LIMITED WARRANTY

10 YEARS 100,000 MILES

NEW VEHICLE LIMITED WARRANTY

5 YEARS 60,000 MILES

ANTI-PERFORATION WARRANTY

7 YEARS UNLIMITED MILES

24/7 ROADSIDE ASSISTANCE

5 YEARS UNLIMITED MILES



Hyundai
Complimentary
Maintenance

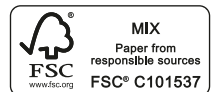
Complimentary maintenance includes Hyundai-approved oil and oil filter change (except for electric vehicles and fuel cell electric vehicles) plus tire rotation at normal factory-scheduled intervals for 3 years or 36,000 miles, whichever comes first. This offer valid only for new 2020-2022 Hyundai models purchased or leased on or after February 1, 2020. See your Hyundai dealer for further details and limitations.



Owner
Assurance

Our commitment to Hyundai owners does not end with the transfer of keys. Wherever the road takes you, we've got your back with Owner Assurance, an umbrella of services and benefits that includes America's Best Warranty, 24/7 Roadside Assistance, innovative safety and car care features...and more.

See dealer for LIMITED WARRANTY details. Fuel economy estimated by EPA for comparison only. Mileage may vary. While the information contained in this brochure was correct at the time of printing, specifications and equipment can change. Feature comparisons based on competitor information available at the time of printing. No warranty or guarantee is being extended in this brochure, and Hyundai reserves the right to change product specifications and equipment at any time without incurring obligations. Some vehicles are shown with optional equipment. Specifications apply to U.S. vehicles only. Please contact your Hyundai dealer for current vehicle specifications. As part of Hyundai's commitment to a responsible environment, this brochure was printed using paper certified by the Forest Stewardship Council®. FSC® certification helps ensure that the highest social and environmental standards are met in the making of the paper we use, contributing to conservation, responsible management and community-level benefits for people near the forests.



©2021 HYUNDAI NP020S2022