

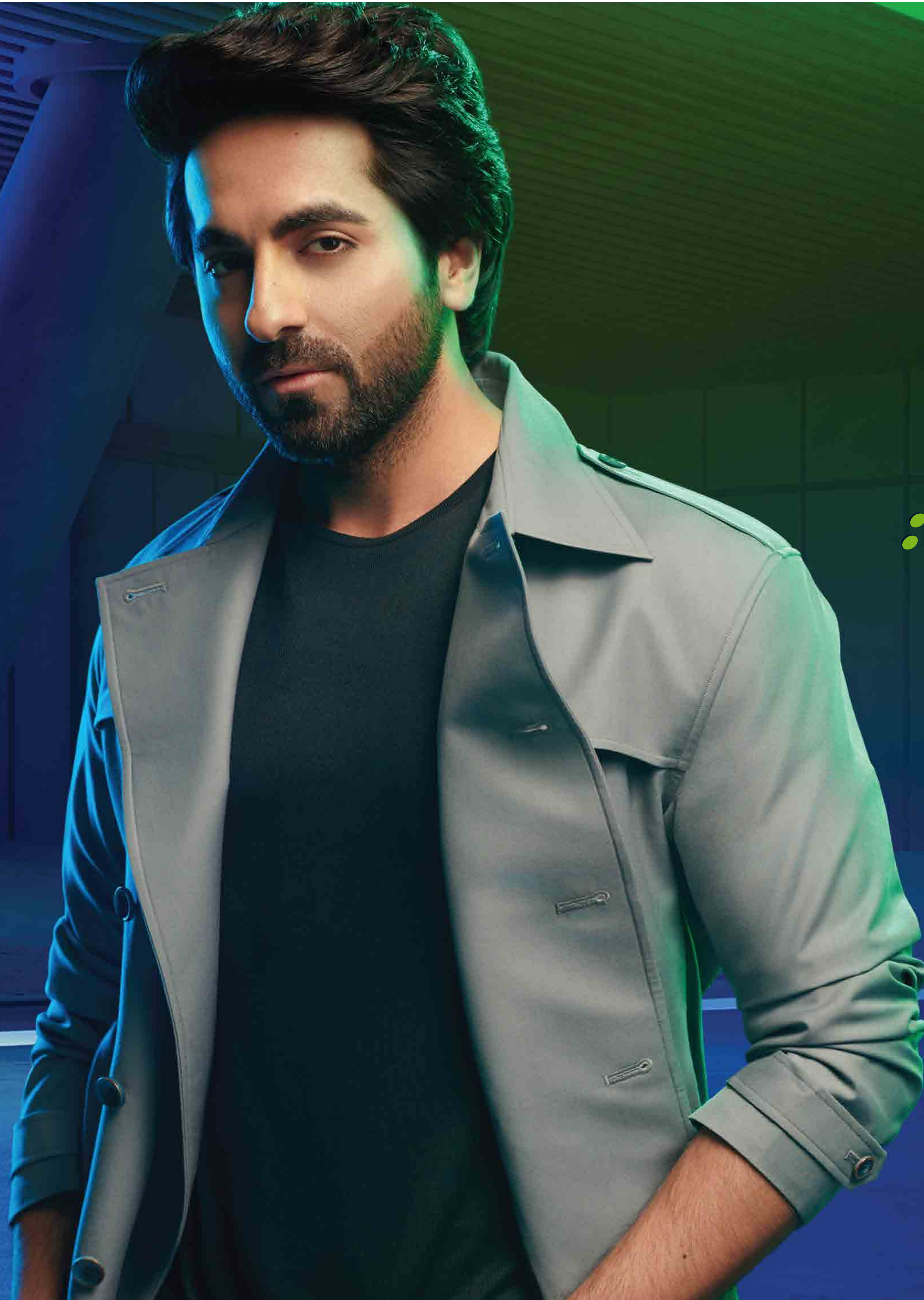


www.toyotabharat.com



356

PRESENTING THE ALL-NEW  TOYOTA
URBAN CRUISER
RESPECT FOLLOWS



What happens when you take charge of your destiny?

And carve your own path to it.

*What happens when you don't go by the rulebook,
but by your instinct?*

*What happens when you dream different,
change the old and inspire the new?*

Wherever you go, respect follows.

*For those who cruise their way to respect,
here's a young urban SUV that's built to take you there.*

THE ALL-NEW  TOYOTA
URBAN CRUISER
THE YOUNGEST URBAN SUV FROM TOYOTA



RESPECT
INSPIRES FINESSE

Sit back and enjoy every drive in the alluring Dual-Tone Dark Brown Premium Interiors, ergonomically laid out for a wide, spacious cabin and added comfort.

- New 17.78 cm Smart Playcast Touchscreen Audio (with Apple CarPlay /Android Auto)*⁵
- 4 Door Speakers and 2 Tweeters
- Front Centre Sliding Armrest with Storage
- Rear Centre Armrest with Cup Holder
- Combimeter Vibe Lights (5 colours)
- Leather Wrapped Steering Wheel*⁷
- Glove Box & Front Footwell Illumination
- Upper Cooled Glove Box

**FEEL THE POWER OF
RESPECT**

Take command of the road with the top performance and superior fuel efficiency of the all-new powerful 1.5L K-series Gasoline Engine.



All-new Powerful K-series 1.5L, 4-Cylinder Gasoline Engine



Choice of MT, AT transmission on all grades



*Advanced Lithium Ion Battery with ISG (on AT variants)*6*



Advanced Rigid Platform

60:40 Split Rear Seat with Flip & Fold



Auto Rain-Sensing Wipers



Cruise Control



Smart Entry with Engine Push Start / Stop Button



Auto AC



ORVM Electric Adjust / Electric Retract & Autofold on Lock



RESPECT IS EFFORTLESS

The new Toyota Urban Cruiser is packed with an array of smart features, to ensure your utmost ease and comfort, on every drive.

*Two-Slat Wedge-Cut Front Grille
with Chrome & Grey Finish*



*Dual Chamber LED Projector Headlamps
with Chrome Accents*



R16 - 40.64 cm Diamond-Cut Alloy Wheels



*Front LED Foglamps with
Chrome Accents*



*Dual Function LED DRL and
Turn Indicator in Headlamps*

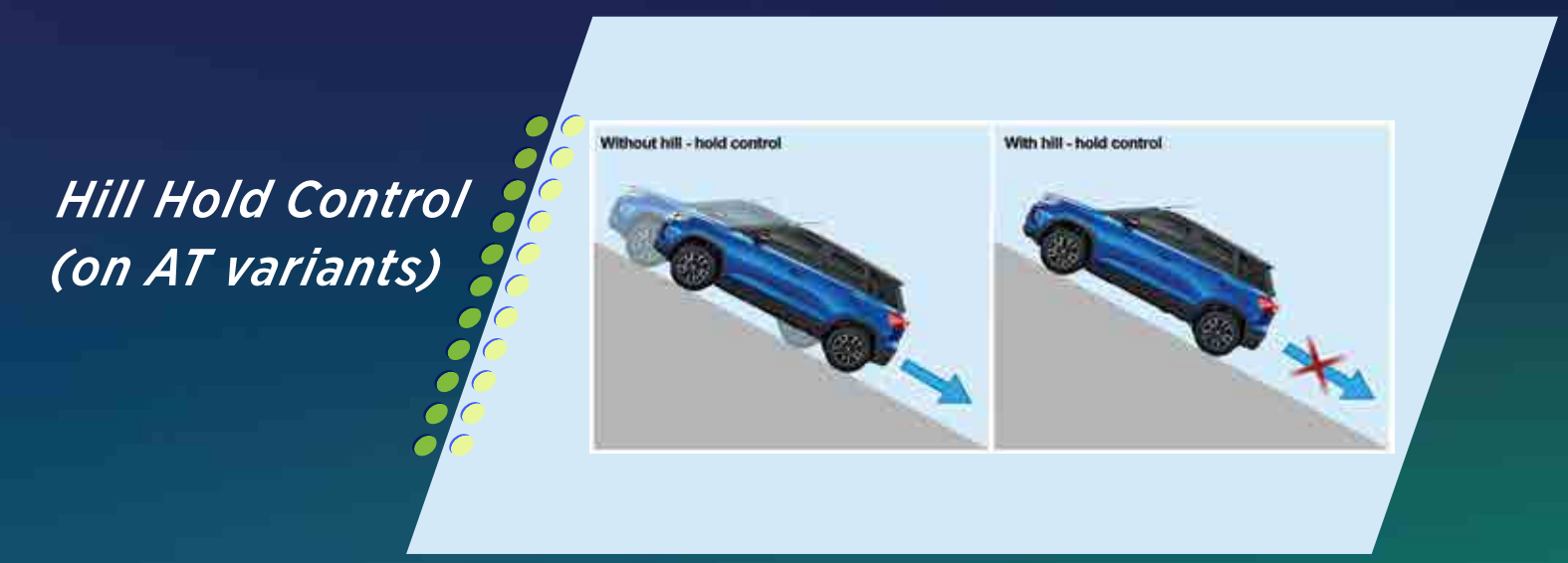
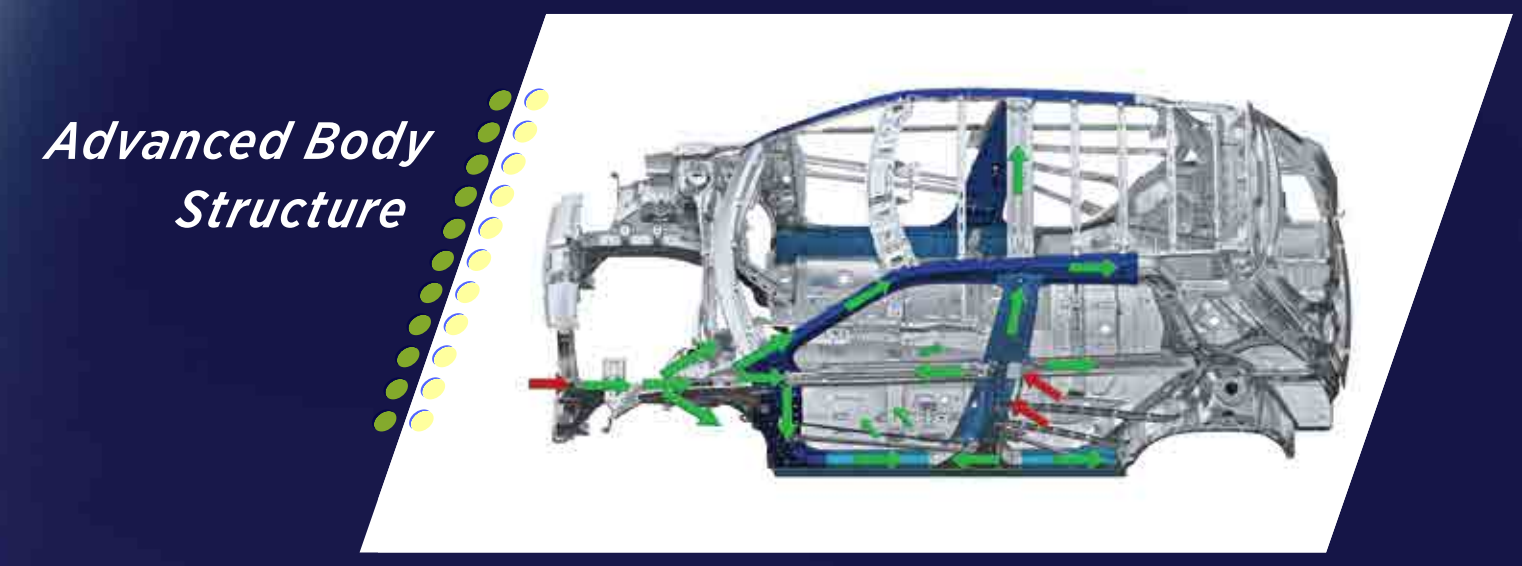
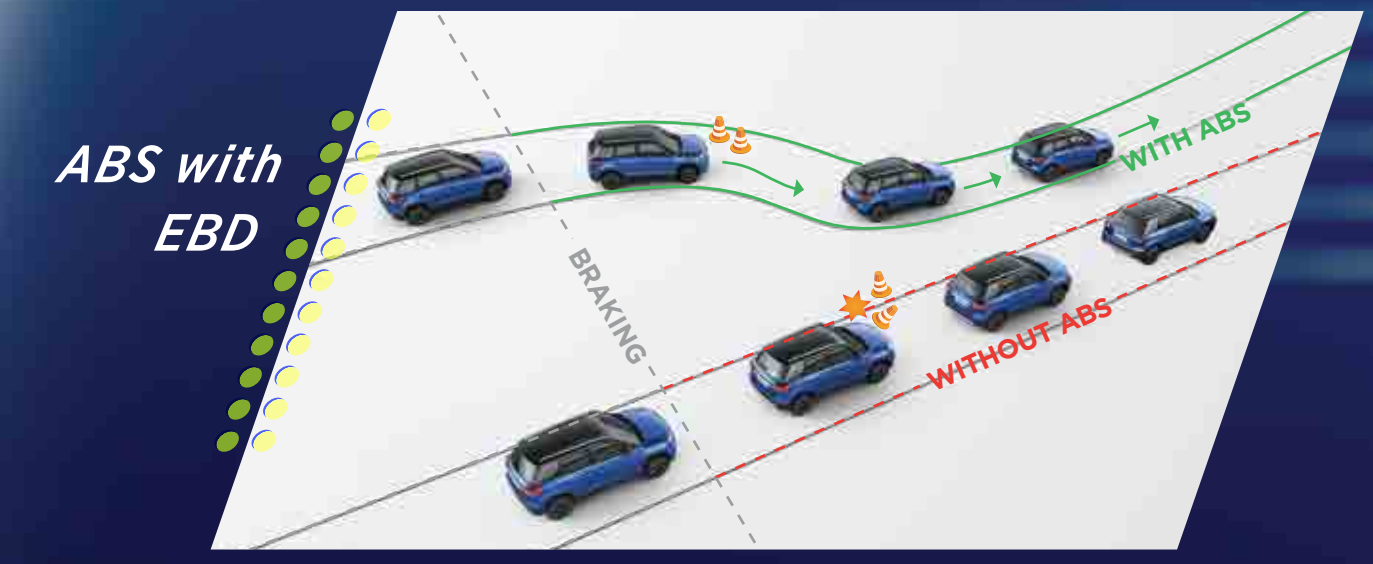


Split LED Rear Combination Lamps



**NOTHING SHINES
BRIGHTER THAN RESPECT**

The all-new Toyota Urban Cruiser comes with a stunning LED Light Package and looks that is bound to make heads turn in awe, wherever you go.



RESPECT FEARS NOTHING

Built with high tensile steel, the new Toyota Urban Cruiser features advanced dual SRS airbags along with a package of active and passive safety features for uncompromised safety.



RESPECT INSPIRES AWE

Stand out in the urban jungle with a customised look.
Choose from a range of 111 sleek and stylish accessories,
designed exclusively for your Toyota Urban Cruiser.

- 1. Front Grille Accent
- 2. Front Bumper Garnish
- 3. Front Under-run Garnish
- 4. Foglamp Garnish
- 5. Wheel Arc Molding
- 6. Number Plate Chrome Garnish
- 7. Rear Bumper Garnish



One-year warranty across all accessories | Accessories are not part of standard equipment. Company reserves the right to add/delete/modify any accessory without prior information | For more details on accessories, please visit www.toyotamakemycar.in

TOYOTA SURE ADVANTAGE

The world of respect brings to you a host of unbeatable ownership advantages, that only Toyota can offer.

QUALITY

UNMATCHED WARRANTY**

3 years / 100 000 km

*Conditions Apply

FOR YOUR PEACE OF MIND

Extended
Warranty

Best Got Even Better

UP TO 5 YEARS / 2,20,000 KM*

* T&C Apply.



Express maintenance
within 60 minutes at all
Toyota dealerships.

CARE & CONVENIENCE SERVICES



Avail roadside assistance up to 8 years ownership anywhere, anytime. With free assistance for the first 3 years.



A network of 290+ world-class service centres.



JUST GIVE A MISSED CALL TO
83676 83676



Toyota brings to you Smiles Packages which ease your car maintenance

ADDITIONAL BENEFITS



Buy | Sell | Exchange - Used car

**BUY-SELL- EXCHANGE
ANY BRAND OF CAR AT
TOYOTA U TRUST**

Toyota U Trust offers transparent & reliable pre-owned car experience. Add the Toyota assurance to your deal and you know you get more than a deal, you get peace of mind. To know more, visit: www.toyotaustrust.in



FINANCIAL SERVICES

A one-stop financial destination with the choicest options for those who want to own their dream Toyota vehicle.

To know more, visit:
www.toyotafinance.co.in

290
SALES OUTLETS

303
SERVICE CENTRES

242
TOUCHPOINTS
ACROSS CITIES

Toyota Sales & Service network as on 31st Aug 2020.

TECHNICAL SPECIFICATIONS

Technical Specifications & Features - TOYOTA URBAN CRUISER

Engine	Displacement	1462 cc (cm ³)
	Fuel Type	Petrol
	Max. Power	77 kW (104.72 PS) @ 6000 rpm
	Max. Torque	138 Nm @ 4400 rpm
	No. of Cylinders	4
	Emission Standard	BS VI
Transmission	Type	5 MT / 4 AT
Dimensions & Weight	Length	3995 mm
	Width	1790 mm
	Height	1640 mm
	Wheelbase	2500 mm
	Boot Space *1	0.328 m ³ (328 l)
	Turning Radius	5.2 m
	Fuel Tank Capacity	0.048 m ³ (48 l)
	Seating Capacity	5
	Kerb Weight	MT: 1110 kg - 1130 kg AT (Advanced Li-Ion Battery with ISG): 1125 kg - 1140 kg
	Gross Vehicle Weight	1600 kg
Fuel Efficiency *2	MT: 17.03 km/l AT (Advanced Li-Ion Battery with ISG): 18.76 km/l	
Suspension	Front	McPherson Strut with Coil Spring
	Rear	Torsion Beam with Coil Spring
Brakes	Front	Ventilated Disc
	Rear	Drum
Wheel & Tyre	Wheel & Tyre Size *3	MID: 205/ 60 R16 (Steel Wheel with Full Wheel Cover) HIGH & PREMIUM: 215/ 60 R16 (Alloy Wheel)

	MID (MT & AT)	HIGH (MT & AT)	PREMIUM (MT & AT)
Exterior			
Dual Chamber LED Projector Headlamps with Chrome Accents	✓	✓	✓
Dual Function LED DRL & Turn Indicator in Headlamps	✓	✓	✓
Split LED Rear Combination Lamps	✓	✓	✓
Rear Spoiler with LED High-Mount Stop Lamp	✓	✓	✓
Front LED Foglamps	×	×	✓
Two-Slat Wedge-Cut Front Grille with Chrome & Grey finish	✓	✓	✓
Stylish Body Colour Bumper & Door Handles	✓	✓	✓
Body Colour ORVM	✓(Body)	✓(Body)	✓(Body / Roof)
Skid Plate Front & Rear	✓(Black)	✓(Silver)	✓(Silver)
Chrome Back Door Garnish with Name Embossed	✓	✓	✓

	MID (MT & AT)	HIGH (MT & AT)	PREMIUM (MT & AT)
ORVM Turn Indicator	✓	✓	✓
Front Windshield / Front Door/ Rear Door/ Back Door Green Glass	✓	✓	✓
Alloy Wheels with Centre Cap	×	✓(Black)	✓(Diamond Cut)
Steel Wheel with Full Wheel Cover	✓	×	×
Roof Rails	✓(Black)	✓(Gunmetal Grey)	✓(Gunmetal Grey)
Wheel Arch Extension	✓	✓	✓
Side Door Molding & Side Under Protection Garnish	✓	✓	✓
Optional Stylish Dual-Tone Exterior (In Selected Colours)	×	×	✓
Floating Roof Effect with A/ B/ C Pillar Blackout	✓	✓	✓
Roof Mounted Short Pole Antenna	✓	✓	✓
Safety & Security			
Dual Front Airbags (Driver + Co-Driver)	✓	✓	✓
ABS with EBD	✓	✓	✓
Advanced Body Structure (TECT Body)	✓	✓	✓
Speed-Sensitive Auto Door Lock	✓	✓	✓
Anti-Pinch Driver-Side Power Window	✓	✓	✓
Hill Hold Control	✓(AT Only)	✓(AT Only)	✓(AT Only)
Rear Wiper & Washer	×	✓	✓
Rear Defogger	✓	✓	✓
Day / Night Inner Rearview Mirror	✓(Manual)	✓(Manual)	✓(Auto)
ISOFIX Child Seat Restraint System	✓	✓	✓
Immobilizer & Anti-Theft Security Alarm	✓	✓	✓
Driver & Co-Driver Seat Belt Reminder	✓	✓	✓
Reverse Parking Camera with Display in Audio	×	×	✓
Reverse Parking Sensors (4 No.s) with Infographic Display	✓	✓	✓
Auto Headlamps On / Off	×	×	✓
5-Door Central Locking System	✓	✓	✓
Pedal Release System	✓	✓	✓
Side Impact Protection Beam	✓	✓	✓
Manual Headlamp Levelling	✓	✓	✓
Front Seat Belt with Pre-Tensioners & Force Limiters	✓	✓	✓
Rear Seat Belts 3 Pt (2 No.s) & Centre Lap Belt	✓	✓	✓
Warning Lamp/ Reminder for (Low Fuel, Door Ajar, Headlamp On, Key Left, Front Seat Belt)	✓	✓	✓
Child-Proof Rear Door Locks	✓	✓	✓
High Speed Warning Buzzer *4	✓	✓	✓
Adjustable Shoulder Anchor for Front Seat Belt	×	×	✓
Interior			
Dual-Tone Interior	✓	✓	✓
Premium Dark Brown Fabric Seats	✓(Rain Pattern)	✓(Honey Comb Pattern)	✓(Honey Comb Pattern)

Technical Specifications & Features - TOYOTA URBAN CRUISER		
Engine	Displacement	1462 cc (cm ³)
	Fuel Type	Petrol
	Max. Power	77 kW (104.72 PS) @ 6000 rpm
	Max. Torque	138 Nm @ 4400 rpm
	No. of Cylinders	4
	Emission Standard	BS VI
Transmission	Type	5 MT / 4 AT
Dimensions & Weight	Length	3995 mm
	Width	1790 mm
	Height	1640 mm
	Wheelbase	2500 mm
	Boot Space *1	0.328 m ³ (328 l)
	Turning Radius	5.2 m
	Fuel Tank Capacity	0.048 m ³ (48 l)
	Seating Capacity	5
	Kerb Weight	MT: 1110 kg - 1130 kg AT (Advanced Li-Ion Battery with ISG): 1125 kg - 1140 kg
	Gross Vehicle Weight	1600 kg
Fuel Efficiency *2	MT: 17.03 km/l AT (Advanced Li-Ion Battery with ISG): 18.76 km/l	
Suspension	Front	McPherson Strut with Coil Spring
	Rear	Torsion Beam with Coil Spring
Brakes	Front	Ventilated Disc
	Rear	Drum
Wheel & Tyre	Wheel & Tyre Size *3	MID: 205/ 60 R16 (Steel Wheel with Full Wheel Cover) HIGH & PREMIUM: 215/ 60 R16 (Alloy Wheel)

	MID (MT & AT)	HIGH (MT & AT)	PREMIUM (MT & AT)
Exterior			
Dual Chamber LED Projector Headlamps with Chrome Accents	✓	✓	✓
Dual Function LED DRL & Turn Indicator in Headlamps	✓	✓	✓
Split LED Rear Combination Lamps	✓	✓	✓
Rear Spoiler with LED High-Mount Stop Lamp	✓	✓	✓
Front LED Foglamps	×	×	✓
Two-Slat Wedge-Cut Front Grille with Chrome & Grey finish	✓	✓	✓
Stylish Body Colour Bumper & Door Handles	✓	✓	✓
Body Colour ORVM	✓(Body)	✓(Body)	✓(Body / Roof)
Skid Plate Front & Rear	✓(Black)	✓(Silver)	✓(Silver)
Chrome Back Door Garnish with Name Embossed	✓	✓	✓

	MID (MT & AT)	HIGH (MT & AT)	PREMIUM (MT & AT)
ORVM Turn Indicator	✓	✓	✓
Front Windshield / Front Door/ Rear Door/ Back Door Green Glass	✓	✓	✓
Alloy Wheels with Centre Cap	×	✓(Black)	✓(Diamond Cut)
Steel Wheel with Full Wheel Cover	✓	×	×
Roof Rails	✓(Black)	✓(Gunmetal Grey)	✓(Gunmetal Grey)
Wheel Arch Extension	✓	✓	✓
Side Door Molding & Side Under Protection Garnish	✓	✓	✓
Optional Stylish Dual-Tone Exterior (In Selected Colours)	×	×	✓
Floating Roof Effect with A/ B/ C Pillar Blackout	✓	✓	✓
Roof Mounted Short Pole Antenna	✓	✓	✓
Safety & Security			
Dual Front Airbags (Driver + Co-Driver)	✓	✓	✓
ABS with EBD	✓	✓	✓
Advanced Body Structure (TECT Body)	✓	✓	✓
Speed-Sensitive Auto Door Lock	✓	✓	✓
Anti-Pinch Driver-Side Power Window	✓	✓	✓
Hill Hold Control	✓(AT Only)	✓(AT Only)	✓(AT Only)
Rear Wiper & Washer	×	✓	✓
Rear Defogger	✓	✓	✓
Day / Night Inner Rearview Mirror	✓(Manual)	✓(Manual)	✓(Auto)
ISOFIX Child Seat Restraint System	✓	✓	✓
Immobilizer & Anti-Theft Security Alarm	✓	✓	✓
Driver & Co-Driver Seat Belt Reminder	✓	✓	✓
Reverse Parking Camera with Display in Audio	×	×	✓
Reverse Parking Sensors (4 No.s) with Infographic Display	✓	✓	✓
Auto Headlamps On / Off	×	×	✓
5-Door Central Locking System	✓	✓	✓
Pedal Release System	✓	✓	✓
Side Impact Protection Beam	✓	✓	✓
Manual Headlamp Levelling	✓	✓	✓
Front Seat Belt with Pre-Tensioners & Force Limiters	✓	✓	✓
Rear Seat Belts 3 Pt (2 No.s) & Centre Lap Belt	✓	✓	✓
Warning Lamp/ Reminder for (Low Fuel, Door Ajar, Headlamp On, Key Left, Front Seat Belt)	✓	✓	✓
Child-Proof Rear Door Locks	✓	✓	✓
High Speed Warning Buzzer *4	✓	✓	✓
Adjustable Shoulder Anchor for Front Seat Belt	×	×	✓
Interior			
Dual-Tone Interior	✓	✓	✓
Premium Dark Brown Fabric Seats	✓(Rain Pattern)	✓(Honey Comb Pattern)	✓(Honey Comb Pattern)

HUES OF RESPECT

A range of eye-catching single and dual-tone colours

MONOTONE



SUAVE SILVER



GROOVY ORANGE



ICONIC GREY



SPUNKY BLUE



SUNNY WHITE



RUSTIC BROWN

DUAL-TONE



RUSTIC BROWN WITH SIZZLING BLACK ROOF



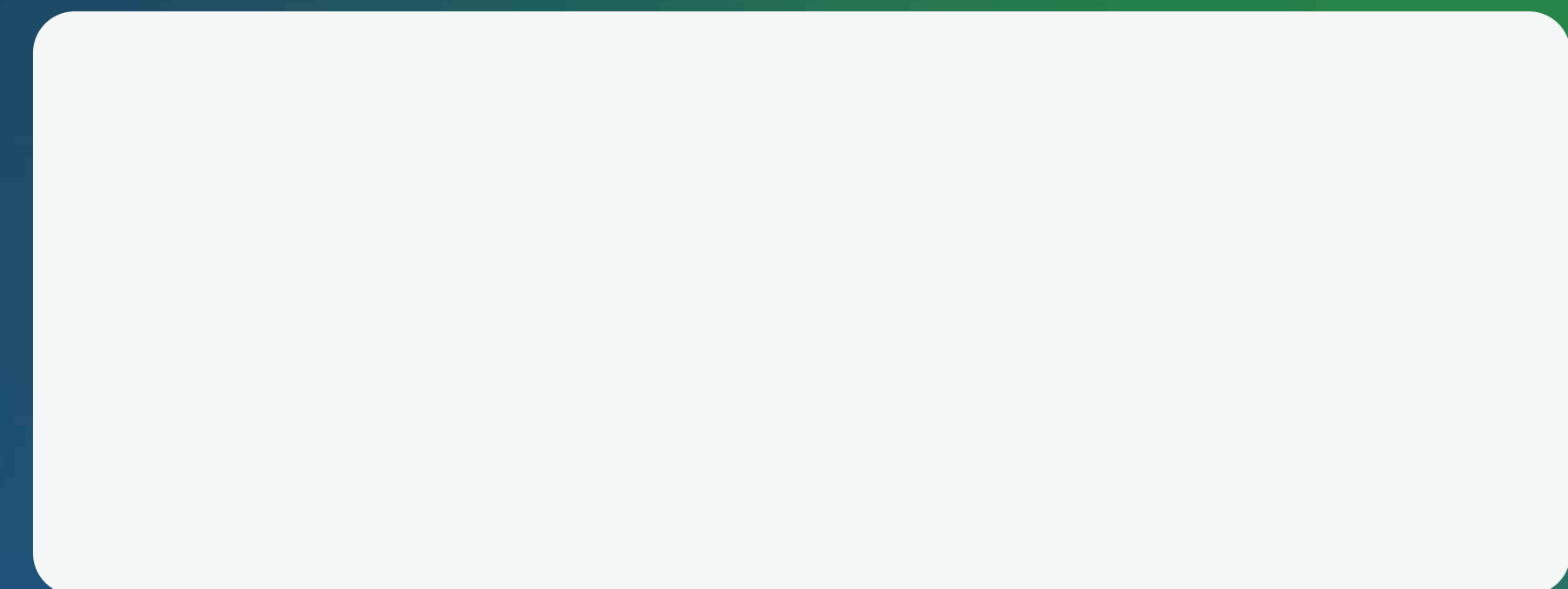
GROOVY ORANGE WITH SUNNY WHITE ROOF



SPUNKY BLUE WITH SIZZLING BLACK ROOF

Disclaimer

- * 1 - VDA Method.
- * 2 - Fuel Efficiency as Certified by Test Agency under Rule 115 of CMVR, 1989 under standard Test Conditions, Actual Mileage on Road may vary.
- * 3 - Spare Tyre Wheel Material is Steel and Spare Tyre Size is 215/ 60 R16 for High & Premium Variants & 205/ 60 R16 for MID Variant.
- * 4 - Speed Warning Buzzer gives audible warning of Over-Speed to Driver.
If vehicle speed >80 km/h then two beeps will sound every minute.
If vehicle speed >120 km/h, continuous beeps will sound.
This Buzzer does not indicate any malfunction in vehicle.
- * 5 - Application Features & Displays may vary depending on different operating systems or smartphone devices used.
Avoid using the phone while driving for your safety.
Apple CarPlay is registered trademark of Apple Inc.
Android Auto is registered trademark of Google Inc.
Bluetooth is a registered trademark of Bluetooth SIG.
- * 6 - Lithium Ion battery poses safety & environmental hazard if disposed inappropriately. Do not dispose battery in garbage bin. Always ask Toyota Authorized Dealer for replacing or disposing battery.
- * 7 - Some parts of leather-appointed upholstery will contain man-made material.
Technical Specification in this brochure is not validated as per Type Approval Certificate. Vehicle pictured and specifications detailed in this brochure may vary between models & equipment. Addition of features may change figures in this chart. Actual colour of the vehicle body & upholstery might differ slightly from images depicted in this brochure. Features are grade specific. Toyota Kirloskar Motor Pvt. Ltd. reserves the right to alter the details of specifications and equipment without a notice.



For more information, visit www.toyotabharat.com
You can **Talk to Toyota** at **1800-425-0001** (BSNL/MTNL Toll-free No.) or **+91-80-66293001** (Direct No.)