



THE 7-SEATER
ERTIGA





Everyone's Welcome

The all-new Ertiga is a stylish seven-seater with a powerful and responsive engine. It has space for the driver, six passengers, luggage, and all the enthusiasm you can muster. Whether you're driving the kids to school, taking the family on holiday, or transporting guests between hotels and airports, with the new Ertiga, you really can get **All In.**





ALL IN? YES!

Setting off on holiday in the brand new Ertiga just got a whole lot better. With space for everyone, the kids can relax, luggage is sorted, and even the dog can come along.

The new Ertiga also comes with all the features you need to enjoy the journey as much as you enjoy your vacation.

AERODYNAMIC STYLING

With its stylish aerodynamic shape, the Ertiga needs less energy to move forward, thereby using less fuel.

CENTRAL LOCKING

Central locking allows you to lock and unlock the car in a jiffy – just make sure everyone's in before you do, especially if it's raining. The GLX model also features keyless entry with push button start so you can open and start your car without fiddling for your key.

SMART SIDE VIEW MIRRORS

Integrated indicators add to the Ertiga's stylish look and improved safety measures.

ALLOY WHEELS

Stylish alloy wheels will make your Ertiga GLX stand out whether it is at school or the airport.



HANDY STORAGE SPACES

With lots of neat and useful storage compartments, you can keep everything you need at arm's length or tucked away just below the luggage area.

ELECTRIC WINDOWS

Front and second row electric windows give every passenger smooth and easy operation.

BACK STORAGE COMPARTMENT

Below the luggage area is a neat and useful storage compartment for those items you'd like to keep handy but not lying around. *

* GL and GLX models only

D-SHAPED STEERING WHEEL

The Ertiga comes with a D-shaped steering wheel that increases legroom and makes it easier to get in and out of the vehicle. The leather-covered steering wheel inside the GLX model adds to your comfort and luxury.

HIGH QUALITY SEAT UPHOLSTERY

The seven-seater Ertiga comes with a modern and spacious black interior that complements its stylish look.

7" INFOTAINMENT SYSTEM WITH SMARTPHONE CONNECTIVITY AND REVERSE CAMERA*

A 7-inch touchscreen display enables intuitive operation of multimedia features including audio, hands-free phone, navigation system, reverse camera and smartphone integration. Features can be selected from the four main operating modes - Listen, Call, Drive and Connect.

The touchscreen system works with Apple CarPlay, Android Auto™ and Mirrorlink™. By connecting your compatible iPhone via USB, Apple CarPlay allows you to make phone calls, access your music, send and receive messages, and get directions all by voice command or a tap on the audio display.

Android Auto puts Google Maps™, Google™ Search and other Google services at the driver's fingertips in a non-distracting way. Mirrorlink™ lets various applications on your smartphone appear on the vehicle's touchscreen display, allowing you to access your smartphone's features.

* Available on GLX only



Good times all round

The new Ertiga brings greater space, comfort and driving pleasure to every journey. It also offers everything you and your family need to stay entertained on the road.





SPACE FOR EVERYONE AND EVERYTHING

With its long wheelbase, high headroom, ample legroom and careful positioning of seats, the Ertiga offers more than enough space for everyone and their stuff.

The seats in the second and third rows can fold down for more space or be adjusted for more comfort. The rear luggage area offers 199 litres of space even when passengers are seated in the third row. The large tailgate opening helps with loading and unloading of luggage.



KEEP YOUR COOL

With automatic Climate Control that continuously monitors and maintains your set temperature in the car, you'll stay comfortable no matter what the weather conditions are outside.**

The rear cabin features ceiling-mounted, three-setting, air conditioning for the comfort of all your passengers.**



2ND ROW AIR CONDITIONING WITH CONTROLS

The rear cabin features ceiling-mounted, three-setting, air conditioning for the comfort of all your passengers.*

*GL and GLX models only



3RD ROW 50:50 SPLIT FOLDING

The third row allows for a 50:50 seat split making it easy to transport longer items as well as passengers.

**GLX model only

**Invite all
your friends**



All-in safety

The Ertiga is equipped with a wide range of safety features to give you peace of mind whether you're transporting loved ones, friends or acquaintances.

SRS DUAL AIRBAGS

The Ertiga comes with SRS front airbags for the driver and front passenger. When sensors detect frontal impact, the airbags inflate to help reduce the risk of injury.

ABS WITH EBD FOR CONTROLLED BRAKING

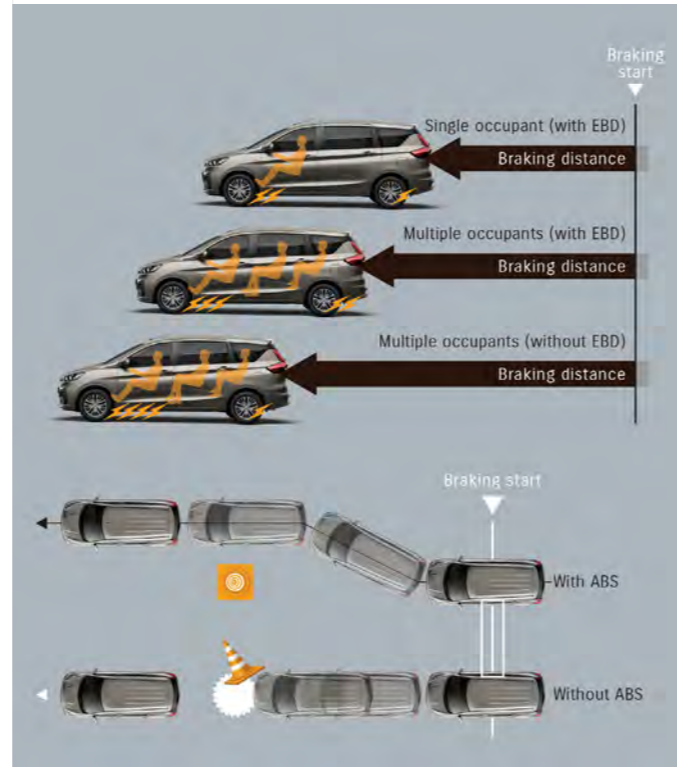
In an emergency braking situation, the Anti-Lock Braking System keeps tyres from locking up and supports the driver to maintain steering stability. Electronic Brake Force Distribution shortens the braking distance by optimally distributing force to the front and rear wheels if there is a large load.

KNOW YOUR SURROUNDINGS

Keep your cool with ultrasonic sensors on the rear bumper to detect obstacles while you park. Warning sounds will help keep you informed of the distance to the obstacle.*

Front fog lamps on the GLX model will improve your visibility in misty conditions.

*GL and GLX models only

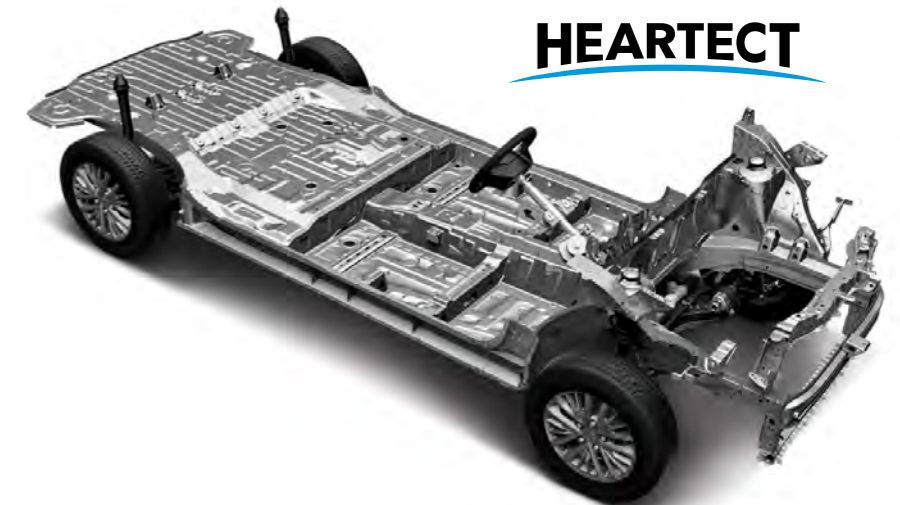


All-in power

The Ertiga's competent 1.5-litre engine – with fuel consumption of only 6.2 litres per 100km, is one of the most fuel-efficient people-carriers in its class. Once you are on the road in the Ertiga, the responsiveness of the engine will ensure your journey is a pleasure from start to finish.

NEW-GENERATION HEARTECT PLATFORM

The new Ertiga's light, continuous frame efficiently absorbs and disperses energy in the event of a collision. Besides greater safety, the HEARTECT frame also contributes to lower fuel consumption and higher driving performance.



HEARTECT

MAJOR SPECIFICATIONS

Number of doors	5-door
Engine	Petrol, 1.5ℓ
Drive system	2WD

DIMENSIONS

Overall length (mm)	4 395	
Overall width (mm)	1 735	
Overall height (mm)	1 690	
Wheelbase (mm)	2 740	
Tread	Front (mm)	1 510
	Rear (mm)	1 520
Minimum turning radius (m)	5,2	
Minimum ground clearance (mm)	180	

CAPACITIES

Seating capacity (persons)	7	
Fuel tank capacity (litres)	45	
Luggage capacity	Max volume (litres)	803
	3rd row seatback folded (VDA method) - when the luggage board is lowered down to the bottom	550
	3rd row seatback raised (VDA method) - when the luggage board is used	153

ENGINE

Type	K15B
Number of cylinders	4
Number of valves	16
Piston displacement (cm ³)	1 462
Bore x stroke (mm)	74.0 x 86.0
Compression ratio	10,5
Maximum output (kW/rpm)	77/6 000
Maximum torque (Nm/rpm)	138/4 400
Fuel distribution	Multipoint injection

TRANSMISSION

Type	5MT	4AT	
Gear ratio	1 st	3 909	2 875
	2 nd	2 043	1 568
	3 rd	1 407	1 000
	4 th	1 065	0 697
	5 th	0 769	-
	Reverse	3 250	2 300
Final gear ratio	4 353	4 375	

CHASSIS

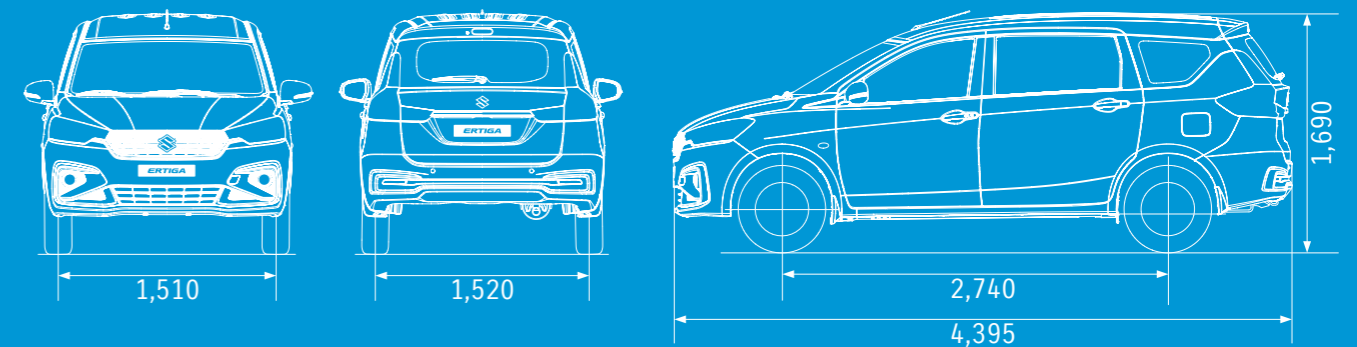
Steering	Rack & pinion	
Brakes	Front	Ventilated disc
	Rear	Drum, leading and trailing
Suspension	Front	MacPherson strut with coil spring
	Rear	Torsion beam with coil spring
Tyres	185/65R15	

WEIGHTS

Kerb weight (min./with full option) (kg)	1 130-1 170
Gross vehicle weight (kg)	1 720-1 740

PERFORMANCE

Maximum speed (km/h)	175	170
----------------------	-----	-----



MAJOR EQUIPMENT

Transmission	5MT			4AT	
	GA	GL	GLX	GL	GLX

CHASSIS

		GA	GL	GLX	GL	GLX
Tyres and wheels	185/65R15 + steel wheels with centre cap	⊕	-	-	-	-
	185/65R15 + steel wheels with full wheel covers	-	⊕	-	⊕	-
	185/65R15 + alloy wheels	-	-	⊕	-	⊕
Spare tyre and wheel	185/65R15 + steel wheel	⊕	⊕	⊕	⊕	⊕

EXTERIOR

		GA	GL	GLX	GL	GLX
Front grille	Chrome	-	⊕	⊕	⊕	⊕
Blacked-out pillars	B pillars	-	⊕	⊕	⊕	⊕
	C pillars	⊕	⊕	⊕	⊕	⊕
Outside door handles	Black	⊕	-	-	-	-
	Body coloured	-	⊕	-	⊕	-
Tailgate opener	Chrome	-	-	⊕	-	⊕
	Key-operated	⊕	-	-	-	-
	Handle-operated	-	⊕	⊕	⊕	⊕

VISIBILITY

		GA	GL	GLX	GL	GLX
Headlamps	Halogen projector and multi-reflector	⊕	⊕	⊕	⊕	⊕
Rear combination lamps	LED with light guides	⊕	⊕	⊕	⊕	⊕
Green-tinted windows		⊕	⊕	⊕	⊕	⊕
Rear window demister		-	⊕	⊕	⊕	⊕
Wipers	Front: 2 speeds (low, high) + intermittent + washer	⊕	⊕	⊕	⊕	⊕
	Rear: 1 speed + washer	-	⊕	⊕	⊕	⊕
Outside door mirrors	Black	⊕	-	-	-	-
	Body coloured	-	⊕	⊕	⊕	⊕
	Manual adjust	⊕	-	-	-	-
	Electrical adjust	-	⊕	⊕	⊕	⊕
	Electrical fold	-	⊕	⊕	⊕	⊕
	With built-in turn signal lamp	-	⊕	⊕	⊕	⊕
Day/night rearview mirror	Manual dimming	-	⊕	⊕	⊕	⊕

STEERING AND INSTRUMENT PANEL

		GA	GL	GLX	GL	GLX
3-spoke urethane steering wheel	With audio controls	-	⊕	⊕	⊕	⊕
	Tilt-adjust	⊕	⊕	⊕	⊕	⊕
Power steering		⊕	⊕	⊕	⊕	⊕
Tachometer		⊕	⊕	⊕	⊕	⊕
Information display	Segment display	⊕	⊕	-	⊕	-
	4.2-inch colour LCD	-	-	⊕	-	⊕
	Clock	⊕	⊕	⊕	⊕	⊕
	Outside temperature	-	-	⊕	-	⊕
	Fuel consumption (instantaneous/average)	⊕	⊕	⊕	⊕	⊕
	Driving range	⊕	⊕	⊕	⊕	⊕
	Engine output and torque	-	-	⊕	-	⊕
Light-off and key reminder		⊕	⊕	⊕	⊕	⊕
Driver's seatbelt reminder	Lamp & alarm	⊕	⊕	⊕	⊕	⊕
Door ajar reminder		⊕	⊕	⊕	⊕	⊕
Low fuel warning		⊕	⊕	⊕	⊕	⊕
Instrument panel ornament	Black horizontal pattern	⊕	⊕	-	⊕	-
	Wooden-pattern	-	-	⊕	-	⊕

DRIVING AMENITIES

		GA	GL	GLX	GL	GLX
Electric windows	Front	⊕	⊕	⊕	⊕	⊕
	Rear	⊕	⊕	⊕	⊕	⊕
Central door locking	Switch on driver's side	⊕	⊕	⊕	⊕	⊕
Remote-control door locks	With hazard lamp answerback function	-	⊕	⊕	⊕	⊕
Keyless push start system		-	-	⊕	-	⊕
Air conditioner	Front manual	⊕	⊕	-	⊕	-
	Front automatic	-	-	⊕	-	⊕
	Rear manual	-	⊕	⊕	⊕	⊕
Pollen filter		⊕	⊕	⊕	⊕	
Audio	Antenna (mounted at front of roof)	⊕	⊕	⊕	⊕	⊕
	Front speakers x 2	-	⊕	⊕	⊕	⊕
	Rear speakers x 2	-	⊕	⊕	⊕	⊕
	Front tweeters x 2	-	-	⊕	-	⊕
	Touch panel audio + Bluetooth®*	-	⊕	-	⊕	-
	7" touchscreen infotainment system with smart-phone connectivity and reverse camera	-	-	⊕	-	⊕

Transmission		5MT			4AT	
Grade		GA	GL	GLX	GL	GLX
INTERIOR						
Cabin lights	Front cabin light (3-position)	⊕	⊕	⊕	⊕	⊕
	Luggage area light (3-position)	⊕	⊕	⊕	⊕	⊕
Sun visors	Driver's and passenger's sides	⊕	⊕	⊕	⊕	⊕
	- with ticket holder (driver's side)	⊕	⊕	⊕	⊕	⊕
	- with vanity mirror (passenger's side)	-	⊕	⊕	⊕	⊕
Assist grips	Passenger's side	⊕	⊕	⊕	⊕	⊕
	2nd-row x 2	⊕	⊕	⊕	⊕	⊕
	3rd-row x 2	⊕	⊕	⊕	⊕	⊕
Cup holders	Front x 2	⊕	⊕	⊕	⊕	⊕
	Ventilated cup holders	⊕	⊕	⊕	⊕	⊕
Bottle holders	Front x 2	⊕	⊕	⊕	⊕	⊕
	2nd-row x 2	⊕	⊕	⊕	⊕	⊕
	3rd-row x 2	⊕	⊕	⊕	⊕	⊕
Console box with armrest		-	-	⊕	-	⊕
Shift knob	Black without ornament	⊕	-	-	-	-
	Black with chrome accent	-	⊕	⊕	-	⊕
	Black with satin chrome	-	-	-	⊕	⊕
Parking brake release button	Black	⊕	-	-	-	-
	Chrome	-	⊕	⊕	⊕	⊕
USB port and AUX input	Centre console	-	⊕	⊕	⊕	⊕
12V accessory socket	Instrument panel x 1	⊕	⊕	⊕	⊕	⊕
	2nd-row x 1	-	⊕	⊕	⊕	⊕
	3rd-row X 1	-	-	⊕	-	⊕
Foot rest	Driver's side	-	-	-	⊕	⊕
Remote fuel lid opener		⊕	⊕	⊕	⊕	⊕
Inside door handles	Black	⊕	-	-	-	-
	Chrome	-	⊕	⊕	⊕	⊕
SEATS						
Front seats	Seat height adjuster (driver's side)	-	-	⊕	-	⊕
	Slide and recline function (both sides)	⊕	⊕	⊕	⊕	⊕
	Head restraint x 2 (separate type)	⊕	⊕	⊕	⊕	⊕

SEATS (CONTINUED)

Front seats (Cont.)	Seatback pocket (driver's side)	-	-	⊕	-	⊕
	Seatback pocket (passenger's side)	-	⊕	⊕	⊕	⊕
2nd-row seats	Head restraint x 2 (separate type)	⊕	⊕	⊕	⊕	⊕
	Slide and recline function	⊕	⊕	⊕	⊕	⊕
	60:40-split single-folding	⊕	⊕	⊕	⊕	⊕
2nd-row centre armrest		-	⊕	⊕	⊕	⊕
3rd-row seats	Head restraint x 2 (separate type)	⊕	⊕	⊕	⊕	⊕
	50:50-split tilt down-folding	⊕	⊕	⊕	⊕	⊕
Seat upholstery material	Fabric	⊕	⊕	⊕	⊕	⊕

LUGGAGE AREA

Luggage board	50:50-split	-	⊕	⊕	⊕	⊕
---------------	-------------	---	---	---	---	---

SAFETY, SECURITY, AND ENVIRONMENTAL COMPATIBILITY

SRS front dual airbags		⊕	⊕	⊕	⊕	⊕
Seatbelts	Front row: 3-point ELR seatbelts with pretensioners and force limiters	⊕	⊕	⊕	⊕	⊕
	- With height adjusters	-	-	⊕	-	⊕
	2nd row: 3-point ELR seatbelts x 2 with centre 2-point lapbelt	⊕	⊕	⊕	⊕	⊕
	3rd row: 3-point ELR seatbelts x 2	⊕	⊕	⊕	⊕	⊕
ISOFIX child seat anchorages	x2	⊕	⊕	⊕	⊕	⊕
Child seat tether anchorages	x2	⊕	⊕	⊕	⊕	⊕
Childproof rear door locks		⊕	⊕	⊕	⊕	⊕
Side impact door beams		⊕	⊕	⊕	⊕	⊕
ABS with EBD function		⊕	⊕	⊕	⊕	⊕
AT shift lock/key interlock		-	-	-	⊕	⊕
High-mount stop lamp	LED	⊕	⊕	⊕	⊕	⊕
Immobiliser		⊕	⊕	⊕	⊕	⊕
Rear Parking Sensors	4 Sensors	-	⊕	⊕	⊕	⊕
Security alarm		-	⊕	⊕	⊕	⊕

⊕ : Standard - : Not Available

* Bluetooth is a registered trademark of Bluetooth SIG, Inc.



**Go far
Go together**

Go big Go in style

Enhance your comfort and style even further with a wide selection of extras.



EXTERIOR STYLING KIT

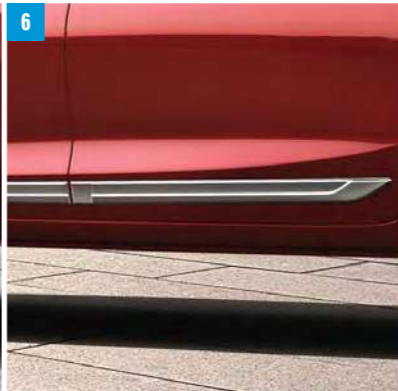
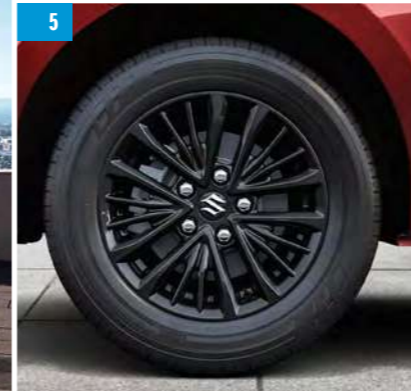
Images of the front, side and rear underbody spoiler are part of exterior styling kit.

COLOURS AVAILABLE:

- Auburn red pearl metallic.
Part No. 990J0M72R07-050
- Magma grey metallic.
Part No. 990J0M72R07-030
- Silky silver metallic.
Part No. 990J0M72R07-020
- Oxford blue pearl metallic.
Part No. 990J0M72R07-040
- Arctic white pearl.
Part No. 990J0M72R07-010

- 1 | Front under body spoiler *
- 2 | Side under body spoiler *
- 3 | Rear under body spoiler *

*Available in colours mentioned

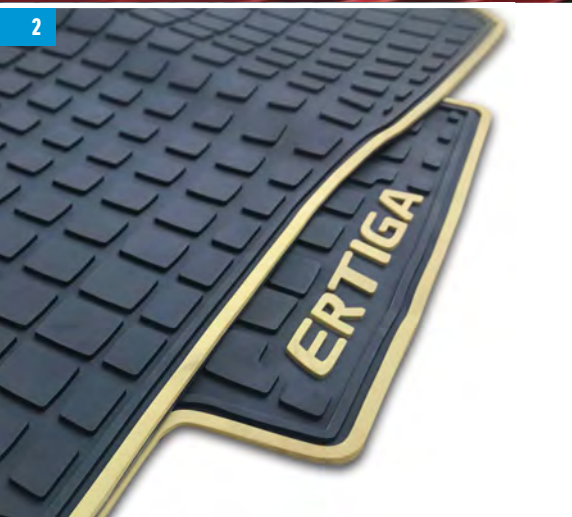


EXTERIOR ACCESSORIES

- 4 | **Roof edge spoiler**
Arctic white pearl.
Part No. 990J0M72R07-130
Silky silver metallic.
Part No. 990J0M72R07-140
Magma grey metallic.
Part No. 990J0M72R07-150
Oxford blue pearl metallic.
Part No. 990J0M72R07-160
Auburn red pearl metallic.
Part No. 990J0M72R07-170
- 5 | **Alloy wheel**
Midnight black.
Part No. 43210M72R50-QC8
Silver.
Part No. 43210M72R50-27N
- 6 | **Body side molding garnish finish**
Part No. 990J0M72R01-020
- 7 | **Body side molding garnish insert**
Consist of coloured and chrome part.
Midnight black pearl.
Part No. 90J0M72R01-010
Arctic white pearl.
Part No. 990J0M72R01-030
Silky silver metallic.
Part No. 990J0M72R01-040
Magma grey metallic.
Part No. 990J0M72R01-050
Oxford blue pearl metallic.
Part No. 990J0M72R01-060
Auburn red pearl metallic.
Part No. 990J0M72R01-070
- 8 | **Door visor**
Part No. 990J0M72RQ0-010
- 9 | **Mud flaps** (no image available)
Part No. 990J0M72R00-010
- 10 | **Tow bar** (no image available)
Part No. 72901-72R00-000

INTERIOR ACCESSORIES

- 1 | Door sill guard
Twin colour.
Part No. 990J0M72RP6-010
- 2 | Rubber mat
Part No. 75901M72RB0-RHD



All-in style

The new Ertiga comes in six stylish shades to complement the vehicle's aerodynamic profile.



Premium Oxford Blue (ZYA)



Metallic Magma Grey (Z7Q)



Pearl Arctic White (ZHI)



Metallic Silky Silver (Z2S)

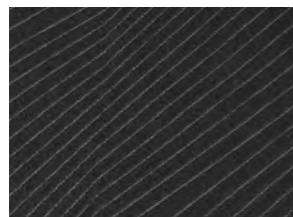


Pearl Midnight Black (ZAM)

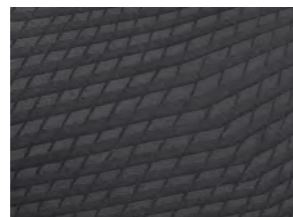


Premium Auburn Red (ZYY)

SEAT UPHOLSTERY



GL and GA interior



GLX interior

WHEELS



15-inch steel wheel with wheel cover



15-inch alloy wheels



SUZUKI COMPLETE

Suzuki understands that purchasing a new vehicle is a substantial investment. Our unwavering commitment to customer satisfaction is represented in our 'Suzuki Complete' package, which includes every aspect of after-sales support, with warranty, service plan, and roadside assistance standard.

Warranty

All Suzuki models are covered by a comprehensive manufacturer's warranty against any defects for a period of three years or 100 000 km. This is supported by a six year body corrosion warranty subject to terms and conditions.

Service Plan

The Suzuki Ertiga benefits from a 4yr/60 000km service plan. This plan includes the replacement of oil, the oil filter, fuel filter, brake fluid, air filter and accessory belts, but excludes tyres, brakes and other wear-and-tear items.

Service Intervals

15 000 km or one year, whichever comes first.

Roadside Assistance

Every new Ertiga comes with a roadside assistance plan. Some of the benefits offered by this comprehensive package include: battery and locksmith call-out services, mechanical and electrical, breakdown towing (accident towing is optional), emergency medical rescue, vehicle repatriation and a stand-by-you roadside security armed-response service.

All care is taken to ensure the accuracy of this brochure at the time of print approval. Specifications, features, prices and model availability may vary from those specified and may change without notice. Always consult your authorised Suzuki Dealer or refer to www.SuzukiAuto.co.za for the latest details on all models. SUZUKI AUTO South Africa (PTY) Ltd will not be held liable for any loss as a result of reliance on the content of this brochure, whether in negligence or otherwise. Vehicles are shown for illustrative purposes only and may not depict exact specifications. Published September 2020.

Part number 9900L-72R02-NEW



SUZUKI AUTO SOUTH AFRICA (PTY) LTD | Tel: 0861 511 111
No.52 Saturn Crescent, Linbro Business Park, Frankenwald, Marlboro, Sandton
www.SuzukiAuto.co.za

