

**LEXUS**  
EXPERIENCE AMAZING

ALL-ELECTRIC  
UX  
300e



---

# MEET THE FIRST ALL-ELECTRIC LEXUS

---

Created to evoke the original fun of driving in the city, the all-electric Lexus UX 300e combines world-class Lexus refinement with an exciting new Lexus Electrified experience.

---

## BENEFITS

---



INSTANT ACCELERATION



6 - 8 HOURS TO FULL CHARGE  
USING AC CHARGING



ZERO EMISSION



THE SOUND OF THE FUTURE





# ELECTRIFY YOUR JOURNEY



---

## POWERFUL YET QUIET

---

The all electric UX 300e is developed with new suspension components, more powerful brakes and even bespoke tyres for your unique and precise driving pleasure. To complete the sense of tranquility, acoustic glass has been used to reduce high-frequency wind noise, allowing driver and passengers to relax in the peaceful UX 300e cabin.



---

## ECO-FRIENDLY YET EXCITING

---

Enjoy the exciting Lexus electrified driving experience around the city and improve the world around you. The UX 300e can accelerate from 0-100 km/h in 7.5 seconds and reach a top speed of 160 km/h, delivering 201 Hp and 300 Nm of instantaneous torque without producing CO2 emissions.



---

## AGILE YET COMFORTABLE

---

The UX 300e takes the twists and turns of the road with a lightness and effortless agility, thanks to the distinctive exterior details that contribute to the car's handling and performance. Then there is the interior that feels open and spacious, meticulously crafted to bring the highest comfort for every journey.

ALL-ELECTRIC  
UX  
300e



## EXPERIENCE THE FUTURE

Evoking the original fun of driving in the city, the UX 300e joins the comprehensive Lexus range of electrified models. The first fully electric Lexus delights with its swift linear acceleration and confident cornering.

# CRAFTED URBAN EXPLORER



## BOLD DESIGN

The all-electric UX 300e maintains the familiar signature of Lexus design features like the spindle grille, sculpted character lines and the distinctive Limitless LED Rear Lights.



## SASHIKO QUILTING

Smooth leather upholstery crafted with sashiko-inspired quilting, a technique used in the creation of traditional martial arts uniforms.



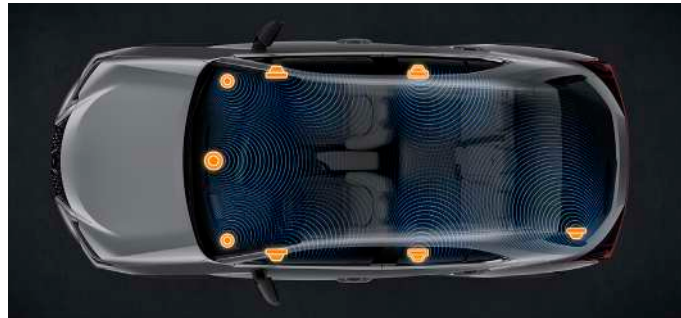
## DRIVE BY WIRE

The perfectly sized shift knob has a satin chrome-plated bezel and leather upholstery, giving it a comfortable feel in your hand.



## FIRST-CLASS MULTIMEDIA SYSTEM

A captivating audio experience supported by a 10.3-inch EMV (Electro Multi Vision) wide display complete with Apple Car Play and Android Auto for your first-class entertainment.



## MARK LEVINSON 13 SPEAKERS

A 13-speaker Mark Levinson Premium Surround Sound System ensures unprecedented sonic quality in an accurate and enveloping sound stage.



## DIGITAL TACHOMETER

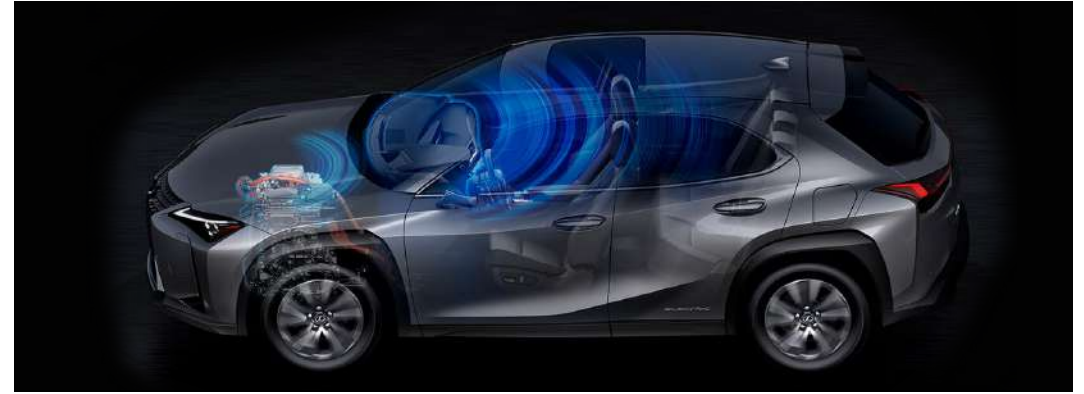
Enhancing your electrified experience, all driving information is readily available to you on the Digital Tachometer.

# IMAGINATIVE TECHNOLOGY



## REASSURINGLY ELECTRIC

A newly developed 54.3 kilowatt-hour high-capacity battery, which achieves over 300 km of range (WLTP cycle) sits under the cabin floor and rear seat to ensure a low center of gravity, enabling the space and practicality expected from an urban crossover.



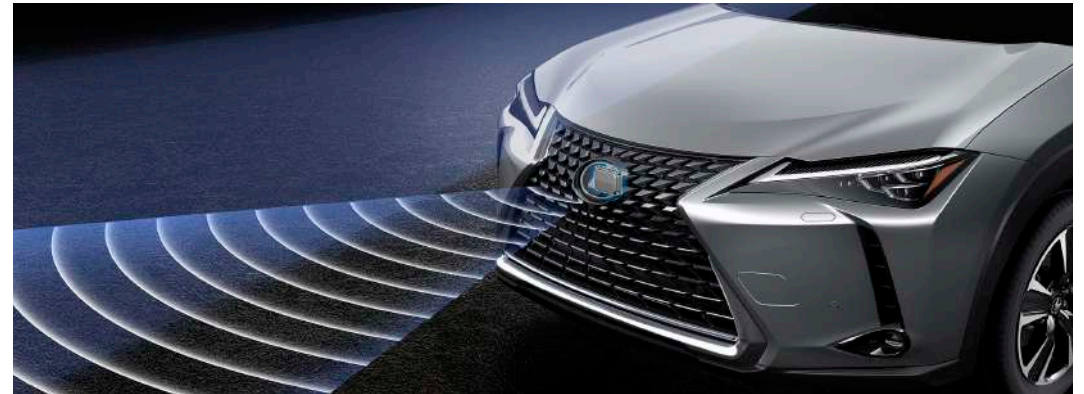
## ACTIVE SOUND CONTROL

A central speaker in the cabin feeds back the natural acceleration sound of the electric vehicle motor. This creates a sense of unity between the driver and the vehicle, while the UX 300e maintains its characteristic quietness.



## AERO VENTILATING WHEELS

Spoke edges and vortices on the wheel enable increased air flow and a high level of aerodynamic performance for increased braking stability.



## LEXUS SAFETY SYSTEM+

Welcome to one of the safest electric cars ever built, the UX 300e is equipped with the very latest Lexus Safety System + which helps anticipate and prevent collisions, lane departures and collisions involving pedestrians.

---

# CHARGING EXPERIENCE

---

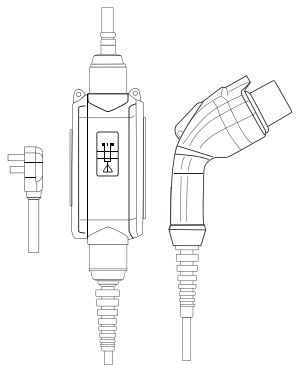
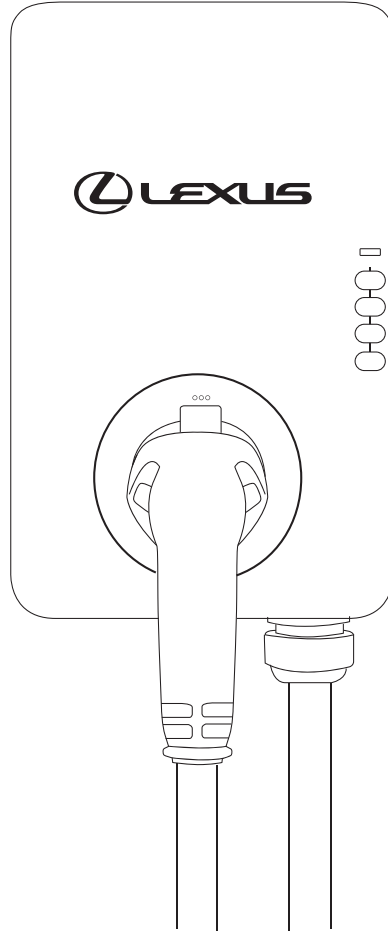
At home or out and about, as our first all-electric Lexus, the Lexus UX 300e comes complete with various options of charging at your convenience.

---

## HOME CHARGING WALL BOX

---

Your Lexus UX 300e will be provided with a complimentary AC Wall Charger (220V, 32A) to be installed at your preferred location. Simply plug in your UX 300e and it will fully charge within 6.5 hours.



---

## HOUSEHOLD SOCKET CHARGER

---

Each Lexus UX 300e is equipped with a Household Socket Charger (220V, 8A) for you to use occasionally, anywhere and anytime. A full charge can be achieved in 24 hours with this charger.



---

## DC FAST CHARGING

---

Feel confident in your urban adventures as public charging points are increasingly available at various locations. With 220V and 125A power capabilities, a full charge can be achieved in approximately 50 minutes.

## SPECIFICATION MODEL LEXUS UX 300e 4X2 A/T

### DIMENSION

LxWxH (mm)	4.495x1.840x1.545
Wheelbase (mm)	2,640
Ground Clearance (mm)	140
Curb Weight (kg)	1.785 - 1.840

### ENGINE & CHASSIS

Engine Type	Permanent Magnet Motor
Battery Type	Li-ion
Charger Type	Type 2 (AC), CHAdeMO (DC)
Total Battery Power (kWh)	54,35
Nominal Voltage (V)	355,2
Battery Capacity (Ah)	153
Max. Output (Hp)	201
Max. Torque (Nm)	300
Transmission	Triple Axes, 2-Stage Reduction
Max. Speed (Km/h)	160
Charger Output (kWh)	6.6
Acceleration 0-100km/h (sec)	7.5
Drivetrain	FF
Range (Km)	300 (WLTP)
Brake Type	Ventilated Disc Brake (Front & Rear)
Suspension Type (Front)	MacPherson Strut
Suspension Type (Rear)	Trailing Wishbone
Min. Turning Radius (m)	5.2
Spare Tire	Temporary Tire

### EXTERIOR

Front Lighting System	3 LED High & Low Beam Headlamp with LED DRL
Rear Lighting System	LED Rear Combination lamp
Cornering Lamps	With (LED)
Side View Mirrors	Auto Retractable, Electro Chromic, Heated
Tires & Wheels	215/60R17

### INTERIOR

Seating Capacity	2 Row - 5 Person
Paddle Shift	With
Cruise Control	With
Head-Up Display	With
Rear Seat	Fixed
Seat Cover Material	Semi Aniline Leather
Audio System	Mark Levinson with 13 Speakers
Front Monitor	10.3 Inch EMV
Drive Mode Select	3 Modes (Eco-Normal-Sport)
Wireless Charger	With
Navigation System	Lexus Navigation System
Moonroof	Tilt & Slide Open Moon Roof
Air Circulation	2-Zone
Atmosphere Control	Carbon Air Filtration
Seat Heater	Front and Rear
Seat A/C	Front
Parking Assist	Panoramic View Camera

### SAFETY

LSS+	With
Airbags	10 Airbags
Brake Feature	ABS with Brake Assist
LDA	BSM

### MODEL LEXUS UX 300e 4X2 A/T (KMA10R-AWDBS)

Approximate Charging Time (hour), 230V	Approx. 6.5 (32 A),
	Approx. 12 (16 A),
	Approx. 19 (10 A),
	Approx. 24 (8 A)

## COLOURS | EXTERIOR

Available colours for UX 300e

SONIC QUARTZ



PLATINUM SILVER ME.



SONIC TITANIUM



MERCURY GRAY MC.



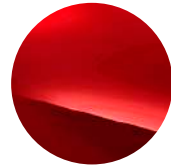
BLACK



GRAPHITE BLACK GF.



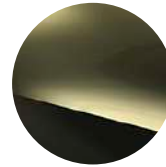
MADDER RED



AMBER CS.



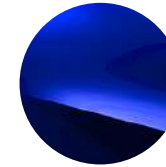
TERRANE KHAKI M.M.



BLAZING CARNELIAN C.L.



CELESTIAL BLUE GF.



Please note: Colour options in the brochure might be slightly different from the actual colours.

## COLOURS | INTERIOR



COBALT



BLACK



OCHER



RICH CREAM



WHITE ASH

**8 YEARS\*** WARRANTY | **5 YEARS\*** FREE SERVICE & PARTS

\*terms and conditions applied



**AUTHORIZED LEXUS DISTRIBUTOR IN INDONESIA**  
24/7 Lexus Concierge Center (021) 390-9999

[www.lexus.co.id](http://www.lexus.co.id)