



PORSCHE



The new Macan

Choose Thrilling



The models featured in this publication are approved for road use in Germany. Some items of equipment are available as extra-cost options only. The availability of models and options may vary from market to market due to local restrictions and regulations. For information on standard and optional equipment, please consult your Porsche Centre. All information regarding construction, features, design, performance, dimensions, weight, fuel consumption and running costs is correct to the best of our knowledge at the time of going to print (08/19). Porsche reserves the right to alter specifications, equipment and delivery scopes without prior notice. Colours may differ from those illustrated. Errors and omissions excepted. More information and a copy of the disclaimer in various languages is available at [www.porsche.com/disclaimer](http://www.porsche.com/disclaimer)

“In the beginning I looked around and could not find quite the car I dreamed of. So I decided to build it myself.”

*Ferry Porsche*



## The dream of the sports car.

A big dream has to be fought for. And so does a bold vision. The next victory? Rarely will it simply fall into our lap. Often, though, there are innate factors we must first fight against: resistance, conventions, and rigid patterns of thinking.

Whatever we fight for or against, nothing is achieved without passion, grit and determination. Ferry Porsche gave everything for the sports car of his dreams. His dream came true. Not because he hesitated, waited or got lucky. Because he went that extra mile.

This attitude, this fighting spirit, is in every Porsche that we've created since 1948. It's there in every detail and in every race we've won. It's also found in every idea. And in our engineers. Who continually surpass themselves. To achieve the one second that makes the difference between triumph and tears. For the 'Dr. Ing.' in our company name, and to reinvigorate Fascination Sportscar time and time again.

To us, it's never been about extra horsepower alone, but about more ideas per PS. It's about engines that are more efficient, not bigger. It's about a design that follows principles, not trends. It's about sports cars that can be driven day in, day out.

It's only when all these things come together that we can talk of Intelligent Performance – the core of the Porsche brand, and of its future. This is what we are fighting for. Just as we did on day one. For a dream that will forever be in our heart.



- 06 Choose Thrilling
- 08 The Macan concept
- 12 Design
- 24 Drive and chassis
- 40 Porsche Connect
- 50 Comfort and entertainment
- 64 Lighting and assistance systems
- 74 Personalisation
- 96 Porsche World
- 98 Technical data

# Choose Thrilling.

We are constantly on tour. Because our life is a live concert. We immediately take to the stage and make the air crackle. Our pulse sets the beat. Then the performance starts. The first chord shakes our world. We experience the sound with every fibre of our body, swept along in a torrent of possibilities. Mainstream has never been our thing. We prefer to remain unconventional and feel alive. We never compromise. We always make our own decisions. More adventure. More life. More thrills. And even more acceleration.

Who accompanies us? A sports car that embodies all this and whose stage is the road.





# The Macan concept.

We have proven that we will not be dictated to. We do not follow trends but prefer to write our own adventure stories. Such as that of a compact SUV that inextricably combines sportiness, design and everyday practicality: the Macan.

The design – clearly refined. The taillight strip ensures a confident appearance. Typical Porsche DNA: the LED main headlights with four-point daytime running lights and four-point brake lights. Porsche Communication Management (PCM) with its large 10.9-inch touchscreen display stands for pure Infotainment. And the new engine generation boasts up to 40PS more power. Because there's no time to lose before embarking upon your next adventure.

---

For fuel consumption and CO<sub>2</sub> emissions, please refer to page 105.



**Trends come and go.  
But individual style remains.**



Design.



# Exterior.

Every era has its fashions. Its tendencies and trends. Most of these are transitory. But what endures? Shapes that can be easily recognised. That represent an attitude and therefore outlast everything else. We call this Porsche DNA.

With its dynamic overall look, the Macan is unmistakably a sports car. Its redesigned rear appears extremely powerful. Like a bold line under its own signature, the characteristic taillight strip emphasises the Porsche logo. The broad shoulders over the rear wheels are reminiscent of the 911. And a visual demonstration of the road-hugging nature of the Macan.

The four-point brake lights complement the taillight strip – not only functionally, but also reveal that the Macan bears the Porsche DNA.

Its flank is also typically Porsche. From this angle, every muscle appears to be energised – like a predator ready to pounce. Its roof line slopes to the back like a coupé, thereby creating characteristic sports car contours with a high aerodynamic quality. Our designers call this the Porsche flyline.

Exclusively for the Turbo, the new roof spoiler additionally optimises the aerodynamics, thereby proving that only one trend really matters: your own.





Adventure fills the air and the Macan models vigorously absorb this – thanks to the enlarged air intakes in their front end. This means that the engine is optimally cooled on its way to the next event, and the road is perfectly illuminated – by the standard LED headlights.

The sideblades also attract attention. They emphasise the dynamic lines and are reminiscent of the 918 Spyder. In the Macan and Macan S, they are finished in Lava Black, as standard. As an option for all Macan models, the sideblades are also available in carbon, Brilliant Silver, black (high-gloss) or exterior colour. Another design highlight? The wide bonnet, reminiscent of the legendary Porsche 917, which won countless victories in the early 1970s – at the 24h of Le Mans, for example, where it held the distance record for 39 years.

Still not enough? The Turbo takes to the road with new LED headlights and four-point daytime running lights including Porsche Dynamic Light System (PDLS), sideblades in exterior colour and SportDesign exterior mirrors. As standard, of course. The 20-inch Macan Turbo wheels in Dark Titanium with highly polished surfaces also catch the eye. Even more sporty and exclusive are the optionally available 21-inch 911 Turbo wheels.

But we still haven't had enough, not by a long way. The interior has plenty more room for further highlights.

# Interior.

Chase one experience after the other. Of course you want to maintain an overview. The sporty front seats convey the typical Macan feeling: you may be sitting high above the road, but you are still closely connected to it. The seat position is also extremely comfortable for longer journeys. Thanks to the optional comfort seats with comfort memory package (14-way) or adaptive Sports seats with comfort memory package (18-way).

As a sports car manufacturer, we understand that a car and its driver must form a single entity. So you do not simply sit in the Macan – but, thanks to its architecture, you are integrated into the vehicle. The three-dimensional arrangement of the controls lends the interior a cockpit character. The instrument cluster with its three-tube design and centrally positioned rev counter lets you keep an eye on everything.

The distance between the standard multifunctional steering wheel and the PDK (Porsche Doppelkupplung) gear selector, as well as the main vehicle functions, is extremely short – via the ascending centre console, characteristic of sports cars. The ignition is on the right – as is typical of Porsche.

The three-spoke sports steering wheel is inspired by the design of the 918 Spyder – and an established motorsport principle: keep your hands on the wheel. Gear changes are ergonomic, fast and sporty, using the two gearshift paddles.

The Macan has an optionally heated multifunctional GT sports steering wheel. Its smaller diameter makes it extremely comfortable, especially during sporty driving.

The Macan understands how to set visual accents, with its exclusive interior design. If you opt for the leather package, the seats and dashboard upper section are covered in smooth-finish leather. And thereby underline the already elegant cockpit. If you require further personalisation, you can choose from various trims.

If you want to be entertained and know what is happening around you, you will be assisted by one highlight of which we are particularly proud: the 10.9-inch touchscreen display in Porsche Communication Management (PCM). This boasts full-HD resolution and a personalisable start screen. Its intuitive menu provides even faster access to the main functions.





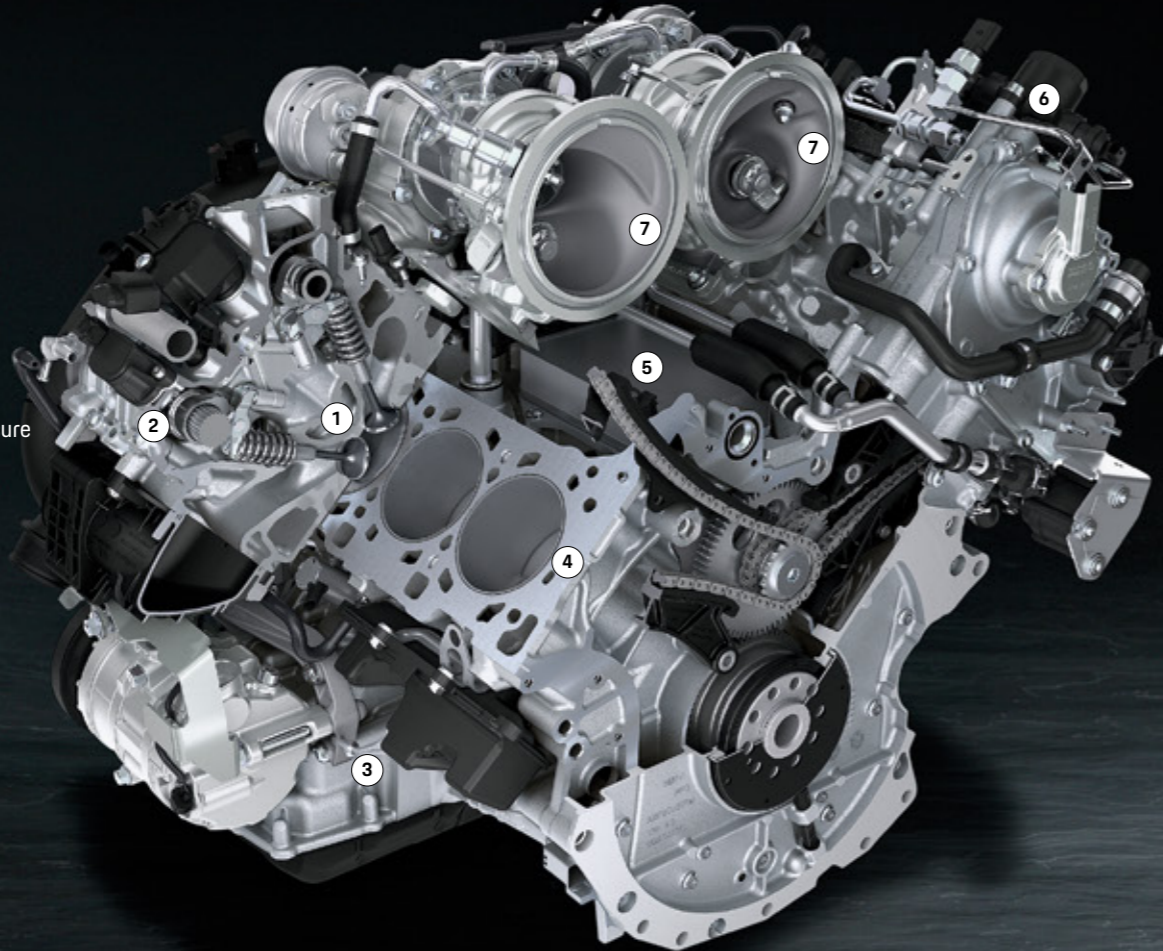


**The most important drive:  
repeatedly surpassing yourself.**



**Drive and chassis.**

- 1 Central injector position of the direct fuel injection (DFI)
- 2 VarioCam Plus
- 3 Variable oil pump
- 4 Weight-optimised aluminium engine block with cast-iron cylinder liners
- 5 Integrated oil/water heat exchanger
- 6 Direct fuel injection (DFI) with up to 250 bar injection pressure
- 7 Twin-turbocharger in central turbo layout



2.9-litre twin-turbo V6 engine in the Macan Turbo

## Engines.

### The 2.9-litre twin-turbo V6 engine in the Macan Turbo.

Producing 324kW (440PS), the new 2.9-litre twin-turbo V6 engine proves to be extremely powerful. It accelerates to 62mph in just 4.5/4.3<sup>1)</sup> seconds. Top speed is 167mph. Maximum torque of 550Nm is achieved at 1,800–5,600rpm. The lightweight design not only delivers improved performance but also reduces emission values. VarioCam Plus ensures improved efficiency and performance: a system that adjusts the camshafts and valve lift.

### The 3.0-litre turbo V6 engine in the Macan S.

The 3.0-litre turbo V6 engine in the Macan S produces a whopping 260kW (354PS) and is fitted with a twin-scroll turbocharger between the cylinder banks. Here too, we rely on lightweight construction, delivering more PS per litre. The twin-scroll turbocharger ensures that the exhaust gas fumes are fed to the turbine wheel as separate streams – for an optimised charge cycle. The result: high torque at low engine speeds – 480Nm at 1,360–4,800rpm. The engine in the Macan S is also equipped with VarioCam Plus.

### The 2.0-litre inline four-cylinder turbo engine in the Macan.

The base model boasts a turbocharger producing 180kW (245PS), high revs and a torque of 370Nm at 1,600–4,500rpm. The optimised two-tract exhaust system generates a throaty sound while on the move. Keyword, sound experience: on request, the Sports exhaust system is available for all models. For an even more intense, emotional Porsche sound. After all, the road is a stage.

1) In conjunction with the optional Sport Chrono Package.

For fuel consumption and CO<sub>2</sub> emissions, please refer to page 105.

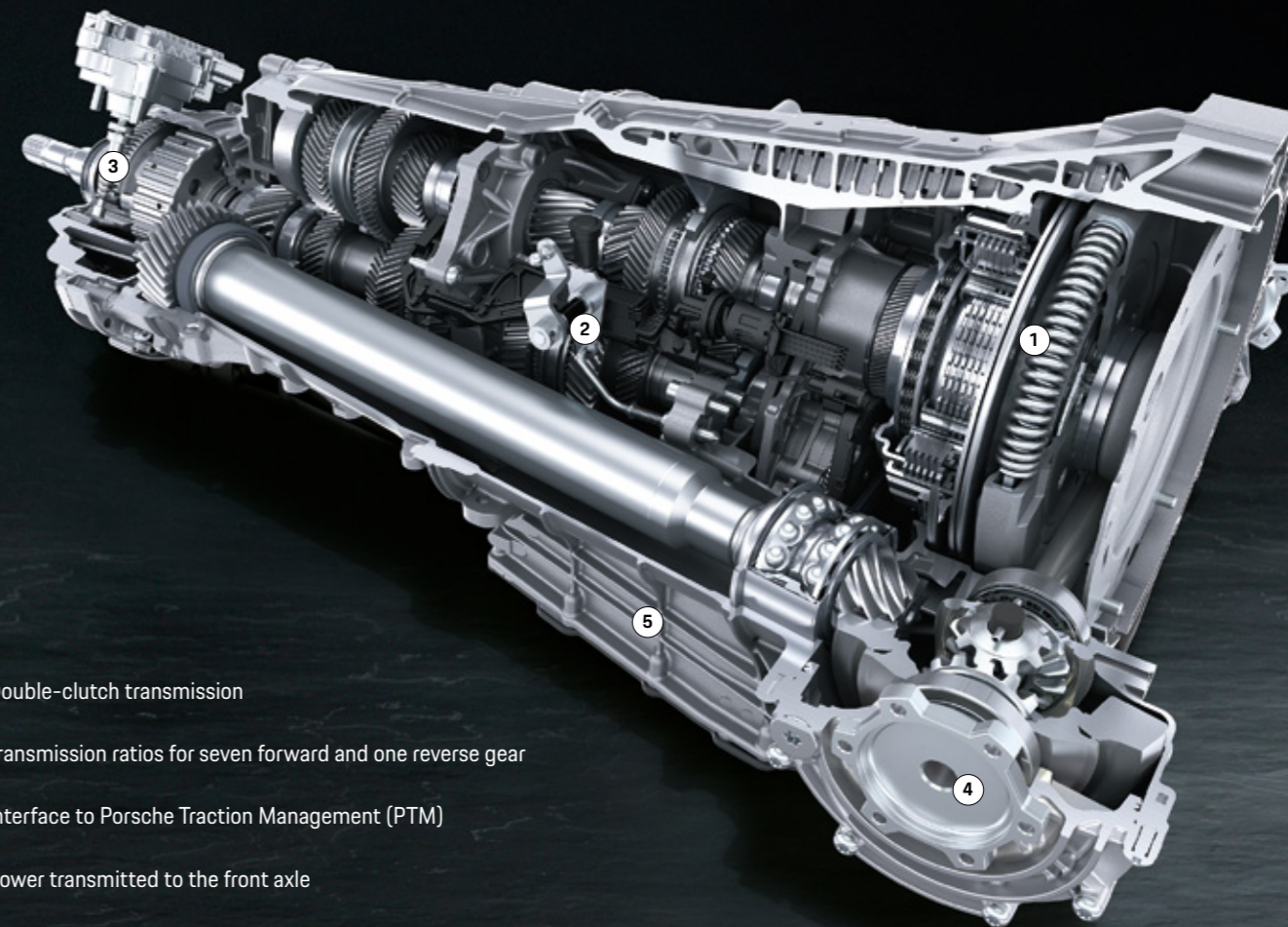


# Transmission.

## Porsche Doppelkupplung (PDK).

Standard on the Macan models: 7-speed PDK featuring both manual and automatic mode. For extremely fast gear changes with no interruption in the flow of power – as well as excellent driving dynamics and efficiency. The principle of PDK is that whenever a particular gear is engaged, the next gear is already preselected. As a result, gear changes take place within milliseconds. Automatic mode is essentially optimised for fuel economy. This means that PDK is able to offer not only a sporty, agile driving feel, but also increased efficiency. Do you prefer to change gears manually? You can do this either via the two shift paddles on the standard multifunctional sports steering wheel or the PDK gear selector. In conjunction with the optional Sport Chrono Package, the PDK shift times become even shorter and the gear changes even sportier. Launch Control, the racing start function, is also available – for uncompromising driving pleasure.

- 1 Heated multifunctional GT sports steering wheel with steering wheel rim in Alcantara® (also available with steering wheel rim in leather) and Sport Chrono Package including mode switch
- 2 Porsche Doppelkupplung (PDK)



- 1 Double-clutch transmission
- 2 Transmission ratios for seven forward and one reverse gear
- 3 Interface to Porsche Traction Management (PTM)
- 4 Power transmitted to the front axle
- 5 Oil sump



**Porsche Traction Management (PTM).**

The characteristic sports car driving dynamics of the Macan are thanks in part to the Porsche Traction Management (PTM) active all-wheel drive system. This comprises an electronic and map-controlled multi-plate clutch, automatic brake differential (ABD) and anti-slip regulation (ASR). The electronically controlled multi-plate clutch regulates the distribution of drive force between the rear and front axles. Driving conditions are constantly monitored to enable a precise and lightning-quick response to a variety of situations. Sensors continuously collect a range of data, including the rotational speed of all four wheels, the lateral and longitudinal acceleration

of the car and the current steering angle. If, for example, the rear wheels spin under acceleration, a greater proportion of drive force is deflected to the front by a more powerful engagement of the multi-plate clutch. In addition, ASR reduces wheel slip. In corners, the drive force sent to the front wheels is regulated for optimum lateral stability.

In short, PTM transfers the incredible sportiness of the Macan to the road. Behind the wheel, you have the feeling that you are driving a genuine sports car: traction, driving safety, outstanding steering behaviour, superior handling and, of course, the excellent dynamics typical of Porsche.





## Chassis.

We do not simply drive in order to travel from A to B. We want to feel that our life is dynamic in every single second. Including on the road. And preferably in a sports car.

### **Air suspension.**

For a high level of comfort and tremendous dynamic performance, you have the option of an air suspension including PASM. With this setup, the car is 15mm lower than with the standard steel spring suspension. The effect? An optimum balance between driving comfort and dynamics, as well as a sporty look. The self-levelling function helps to maintain a constant vehicle position. If desired, you can switch the ground clearance to three levels: High Level I, Normal Level and Low Level I. At High Level I, the car is 40mm above Normal Level; at Low Level I, 10mm below it. Loading Level is especially practical: the rear end only lowers 30mm from normal level to make it easier to load the car. This function is operated by means of a button in the luggage compartment.

**Porsche Active Suspension Management (PASM).** PASM is an electronic damping control system that actively and continuously controls the damping force, depending on the road conditions and driving mode, for each individual wheel. For reduced body movements and thus more comfort in all seats. Three modes are available: 'Normal', 'SPORT' and 'SPORT PLUS'.



## Sportiness.

### **Sport Chrono Package including mode switch.**

Adventure at the push of a button? A rare occurrence. But not impossible. The Sport Chrono Package provides even sportier tuning of the chassis, engine and transmission. It includes a stopwatch with an analogue and digital display and Sport Chrono functions in PCM to view, store and evaluate lap times as well as other driving stats. One new feature is the mode switch with SPORT Response button on the steering wheel, derived from the 918 Spyder. There are four settings to choose from: 'Normal', 'SPORT' and 'SPORT PLUS', which allows you to adjust the vehicle more closely to your personal driving style. When SPORT mode is active, the Macan responds even more dynamically and directly. While in SPORT PLUS mode, the engine becomes even more snappy.

PASM results in harder damping and a more direct steering. The optional air suspension drops to Low Level I. An additional function is Launch Control, which helps to deliver optimum acceleration from a standing start. The stopwatch on the dashboard displays the total driving time, or alternatively the current time.

### **Porsche Torque Vectoring Plus (PTV Plus).**

PTV Plus is a system intended to improve driving dynamics and stability. It works with a variable torque distribution on the rear wheels and an electronically regulated rear differential lock. PTV Plus optimises steering response and precision by selectively applying brake pressure to the left or right rear wheel. Consequently, a greater amount of drive force is applied to the outside rear wheel, inducing an additional rotational pulse (yaw movement) – making cornering a real experience.

### **OFF-ROAD button.**

Would you like to try roads that aren't actually there? A button on the centre console sets your Macan to OFF-ROAD mode. All relevant systems switch to a traction-optimised programme for off-road terrain. The optional air suspension including PASM automatically adjusts to High Level I. In addition, optional Porsche Torque Vectoring Plus (PTV Plus) and Porsche Stability Management (PSM) – integrated as standard – optimally adapt their setup for off-road use, delivering improved driveability and safety. PTM, which is also fitted as standard, provides a fully variable distribution of drive force between the front and rear axles. This delivers a crucial increase in traction and driving safety.



## Brakes.

The brakes of all the Macan models are finely tuned for optimum performance. So it goes without saying that the brake systems are super-sized and adapted to the high power output. At the front, the Macan models are equipped with four-piston aluminium monobloc fixed brake calipers. From the Macan S upwards, six-piston units are fitted. The brake discs are internally vented for consistently high braking performance, even during continuous use. The brake calipers of the Macan are finished in black. Those on the Macan S in Titanium Grey. On the Macan Turbo, they are white – thanks to the highly efficient Porsche Surface Coated Brake (PSCB).

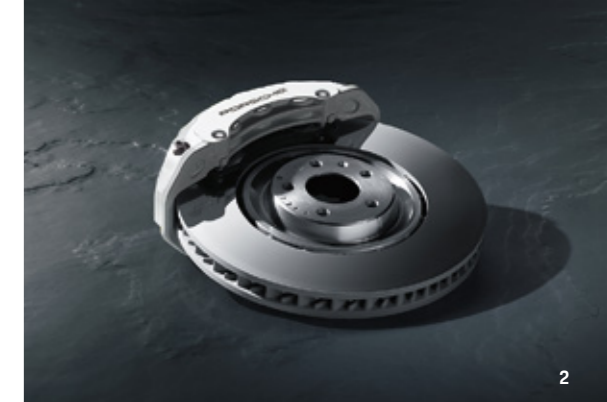
### **Porsche Ceramic Composite Brake (PCCB).**

As an option, you can have your Macan equipped with the race-track-approved Porsche Ceramic Composite Brake (PCCB). The cross-drilled ceramic brake discs have a diameter of 396mm at the front and 370mm at the rear. Furthermore, the ceramic

brake discs are totally resistant to corrosion and offer more favourable noise-damping properties. The key advantage is that the brake discs are approximately 50% lighter than cast-iron discs of a similar design and size. As well as enhancing driving performance and fuel consumption, this particularly reduces unsprung and rotating masses. Optional for the Macan Turbo and Macan S.

### **Porsche Surface Coated Brake (PSCB).**

Standing still is out of the question for us. But if we do have to slow down, the Porsche Surface Coated Brake (PSCB), with a diameter of 390mm on the front axle, ensures outstanding performance. The white brake calipers with their glossy brake discs also set design accents. Standard on the Macan Turbo, optional for all other Macan models.



2



3



4

- 1 Porsche Ceramic Composite Brake (PCCB), 396mm diameter, front, 370mm rear, brake calipers in yellow
- 2 Macan Turbo brakes: Porsche Surface Coated Brake (PSCB), 390mm diameter, front, 356mm rear, brake calipers in white
- 3 Macan S brakes: cast-iron brake discs, 360mm diameter, front, 330mm rear, brake calipers in Titanium Grey
- 4 Macan brakes: cast-iron brake discs, 345mm diameter, front, 330mm rear, brake calipers in black



**You don't need a lifestyle magazine;  
you just need you.**



**Porsche Connect.**

# Infotainment.

For even more points of contact with your next adventure: PCM is your central control centre for audio, navigation and communication. The standard navigation module including online navigation uses mobile data to supply Real-time Traffic Information (RTTI), so that you are always in the right place at the right time. The current PCM generation in the Macan has a 10.9-inch touchscreen display with full-HD resolution.

Another highlight is the start screen that is intuitive to operate and can be customised to your needs.

Of course, every experience also deserves its own soundtrack. While driving, you can enjoy your favourite music via two USB data and charge ports in the front and two USB charge ports in the rear, Bluetooth® or even SD card – or simply listen to the radio.



Everyday routine – or time for an adventure? With us, no two days are the same. We do not compromise, preferring to break new ground. Porsche Connect helps you do this. It puts you in the ideal starting position for any road trip – and any of your goals. With useful services and smartphone apps that make your life easier in many ways.

An integrated LTE-enabled SIM card and data package are also available. You can use these to conveniently access the navigation and Infotainment services – except for the music streaming functions. For all music services and to use the in-car WiFi hotspot, a data package is available from the Porsche Connect Store. Of course, you can still use your own SIM card if you prefer. This will require a subscription to a mobile network provider of your choice (subject to charge).

### Services and apps.

Porsche Connect provides access to useful services and features that offer assistance in your Macan. It is easily operated via PCM or My Porsche. It includes a locator service, which allows you to find all kinds of destinations in a matter of seconds. How about an open-air or covered parking space? Or a good restaurant for a catch-up with friends – chosen based on the reviews of other diners, while in your Porsche? Voice Pilot, your intelligent online voice control system, will help you keep an eye on the road and traffic at all times. Via simple interaction, it will take you to your destination, even if you cannot provide a specific address. For example: tell the system that you are hungry and Voice Pilot will immediately suggest appropriate destinations, such as restaurants or supermarkets in your vicinity.

In addition to its range of smart services, Porsche Connect also offers two smartphone apps:

The Porsche Connect app allows you to send destinations to your Porsche before you start your journey. Even your smartphone calendar can be viewed directly on PCM and stored addresses used for navigation. What's more, the Porsche Connect app gives you access to millions of music tracks thanks to its built-in music streaming function.

The Porsche Car Connect app helps you retrieve vehicle data and remotely control selected vehicle functions via your smartphone or Apple Watch. Another feature is the Porsche Vehicle Tracking System (PVTS) including theft detection.

Go to [www.porsche.co.uk/connect](http://www.porsche.co.uk/connect) to learn more about the apps and services available.

- 1 Apps
- 2 Apple CarPlay
- 3 Calendar
- 4 Locator







### **Offroad Precision app<sup>1)</sup>**

Of course, experiences can also be enjoyed away from paved roads. When driving through rough terrain, the Offroad Precision app provides valuable tips. Such as a tutorial, giving you an insight into how to skilfully drive the Macan over hill and dale. Your personal progress will be recorded and evaluated. Improve your performance, share your status with friends or simply challenge one another.

But you can document even more than this. Collect data about routes, times or GPS locations. The Offroad Precision app will use these values to automatically produce route and altitude profiles that you can subsequently view on a map. What is even more impressive than any statistic? Reality. And you can capture it all on video. The clips are recorded either with a smartphone or externally controlled Action Cam<sup>2)</sup>.

### **Apple CarPlay.**

The Apple CarPlay function enables you to connect your iPhone to your Porsche and have some of your apps shown directly on the central display screen of Porsche Communication Management (PCM). With the Siri voice recognition interface, you can conveniently use your apps on the move while keeping your full concentration on the road. Wireless Apple CarPlay without using the USB port is currently not available in all markets.

### **My Porsche.**

Every Porsche can be configured to your preferences. Porsche Connect is the same. So you can personalise and operate many of the Porsche Connect functions and services according to your needs via My Porsche. Plan your route and transfer this to your Porsche. View the current fuel level and data from your last trip, or check whether the doors and windows are closed. If required, your family and friends also have access to My Porsche and thus to certain functions of your Porsche.


### **Porsche Connect Store.**

Would you like to extend your contract? Or purchase additional Porsche Connect services? Visit the Porsche Connect Store at [www.porsche.co.uk/connect-store](http://www.porsche.co.uk/connect-store) and discover more about what Porsche Connect has to offer. Porsche Connect in all its diversity: learn all about other services, apps and functions online – including availability information for your vehicle and your country. By the way, our portfolio of services is constantly being expanded: visit [www.porsche.co.uk/connect](http://www.porsche.co.uk/connect) for all the latest information.

1) Only in conjunction with optional compass display on the dashboard.

2) Not included.

The Porsche Connect services come with an inclusive period of 24 months, excluding the Car Connect (Remote)/Car Remote Services where the included period is 12 months. Safety and Security/Car Security Services attract an additional subscription. An integrated SIM card – including data – is also included in the price, for the use of selected Porsche Connect services. A WiFi data package can also be purchased in the Porsche Connect Store to use the WiFi Hotspot and remaining Porsche Connect services, such as Music Streaming, via the integrated SIM card. Alternatively, you can use your own SIM card to establish a data connection. Further information about the free inclusive period of use and any subsequent costs as well as more information on the individual services is available online at [www.porsche.co.uk/connect](http://www.porsche.co.uk/connect) or from your Porsche Centre.

A woman with curly hair, wearing a grey hat and a black leather jacket, is looking at a vinyl record in a record store. She is holding a red vinyl record with a black label. The store has a brick wall, a guitar hanging on the wall, and a window looking out onto a street with a green car. There are stacks of vinyl records in the foreground with labels like 'FREESTYLE / POP DANCE', 'Hi NRG / ITALO', '80s 12"', and 'DANCE CLASSICS'.

**Outwardly always at full throttle.  
Inwardly the epitome of calm.**



Comfort and entertainment.

# Comfort.

We perceive experiences with our senses. Of course, this also includes the feeling we have when driving our sports car.

**Touch:** the ascending centre console and optional GT sports steering wheel contribute to the genuine sports car feeling. While the elegant interior conveys the exclusive impression you would expect of a Porsche, thanks to the optional high-quality leather interior. The optional seat ventilation provides a pleasant climate and improved seating comfort. This works by actively ventilating the perforated seat centre and backrest.

**Sight:** the 10.9-inch touchscreen display lets you maintain an overview of everything at all times. And also look ahead: thanks to the standard navigation system with Real-time Traffic Information (RTTI). The windscreen is heatable, on request. The glass panels of the optional panoramic roof system create an extremely bright and pleasant lighting effect inside your Macan.

In addition, the front portion slides open or tilts to a raised position. A roll-up blind also shields you from strong sunlight.

**Sound:** the Sports exhaust system generates the powerful sound typical of Porsche – standard on the Macan Turbo, optional on all other Macan models. For even more audio pleasure, the Burmester® High-End Surround Sound System is available as an option for the Macan models.

**Smell:** three-zone automatic climate control is fitted as standard. An active carbon filter traps particles, pollen and odours. A new ionisation function is available as an option – for improved air quality. Before it reaches the cabin, the air in the automatic climate control system is passed through an ioniser. Germs and other pollutants are reduced.





## Seats.

### **Adaptive Sports seats with comfort memory package (18-way).**

The adaptive Sports seats with comfort memory package combine ultimate seating comfort with sportiness. Offering 18-way electric adjustment, the seats can be optimally adapted to meet your needs in terms of seat height, squab and backrest angle, seat squab length, fore/aft adjustment and four-way lumbar support. The steering column is also electrically adjustable. The following functions can be memorised: driver and front passenger seat positions, including lumbar support, as well as steering wheel and exterior mirror positions (comfort memory package). The raised side bolsters on the seat cushions and backrest are electrically adjustable – for dynamic driving. Standard on the Macan Turbo. Optional for all other Macan models.

### **Comfort seats with comfort memory package (14-way).**

Would you like generous seating comfort for both front seats? To supplement the standard comfort seats, the comfort memory package offers additional adjustment capabilities. Thus, driver and front passenger lumbar support, seat squab length and steering column can also be adjusted.

### **Comfort seats.**

Comfort seats with electric eight-way adjustment on the driver's side are both ideal for relaxed motoring and practical to operate. Seat height, fore/aft position, squab angle and backrest adjustment are all adjustable. The passenger seat is adjusted manually. Seat centres in Alcantara® create a sporty accent. Standard on the Macan S and Macan.

- 
- 1 Adaptive Sports seats in front (18-way, electric) with comfort memory package including optional Porsche Crest on headrests
  - 2 Comfort seats (front) with eight-way electrical adjustment on the driver's side including optional leather package or optional leather interior

# Sound systems.

## **Burmester® High-End Surround Sound System.**

The Burmester® High-End Surround Sound System, optimally adapted to the Macan, transforms sounds waves into unique sensory stimuli – and music into an exclusive soundscape.

The surround sound system developed by Burmester® – one of the world's most respected manufacturers of high-end audio equipment – is available as an option. The technologies behind the system are from the finest premium home audio systems that Burmester® has to offer. The extravagance is uncompromising, the craftsmanship exquisite, the sound phenomenal. The system owes its excellence to countless details, and one goal: audio perfection.

The figures alone sound impressive: 16 amplifier channels with a total output of more than 1,000 watts, 16 loudspeakers including an active subwoofer with 300-watt class D amplifier, a total diaphragm surface area of more than 2,400cm<sup>2</sup> and a frequency response of 30Hz to 20kHz. Crossover technology has been carried over almost unmodified from Burmester® high-end home audio products. Analogue and digital filters have been optimally defined for their installation location and finely tuned after extensive in-car audio testing. Air-motion transformers (AMT) ensure unmistakably fine, clear and undistorted high-frequency sound reproduction with excellent level stability. The sound enhancer also optimises the tone of data-compressed music files. Optional for all Macan models.

## **BOSE® Surround Sound System.**

This system has been optimally adapted to the Macan models. A total of 14 loudspeakers, including a subwoofer and centre speaker, and 14 amplifier channels with a total output of 665 watts deliver an impressive sound experience. BOSE® SoundTrue enhancement technology delivers even better audio quality and dynamics for compressed file formats such as MP3. It revitalises digitally compressed music. The result: a clearer and more spatially tangible sound. Standard on the Macan Turbo. Optional for all other Macan models.

## **Sound Package Plus.**

Sound Package Plus, with 10 loudspeakers and an output of 150 watts, delivers excellent sound. The acoustic pattern in the vehicle interior is optimally adapted to the driver and passengers by the amplifiers integrated into PCM. Standard on the Macan S and Macan.

1 Burmester® High-End Surround Sound System

2 BOSE® Surround Sound System





## Everyday use.

### Roof rails.

These high-quality roof rails are available in aluminium or with a black (high-gloss) finish. They blend harmoniously into the vehicle's dynamic design. Roof rails are a prerequisite for the optional roof transport system and are only available as a factory-fitted option. Optional for all Macan models.

### Roof transport system.

In conjunction with the optional roof rails, this set of lockable cross members is compatible with all Porsche modules. The load-bearing parts in aluminium are designed to carry a maximum load of 75kg. A range of aftermarket modules is available from the Porsche Tequipment accessories programme. Optional for all Macan models via Tequipment.

### Luggage compartment.

The large luggage compartment of the Macan models is prepared for a wide variety of uses and boasts a capacity of 488 litres. A storage compartment to the side offers additional space. The rear bench seat folds down with a ratio of 40:20:40. With the seats fully folded, the available capacity increases to 1,503 litres. The removable luggage compartment cover provides protection against sunlight and offers additional privacy. The ski bag from Porsche Tequipment can also be removed. It can be used outside of the vehicle for carrying equipment or cleaning.

For loading convenience, the optional air suspension enables you to lower the rear end of the vehicle by 30mm using a button in the luggage compartment. The tailgate features a heated glass panel. It opens automatically within five seconds at the push of a button. Its adjustable opening height can be memorised so that it always stops at a safe distance from your garage ceiling, for example.



#### **Towbar system.**

When not required, the towball of this electrically extending towbar system disappears under the rear at the push of a button. A 13-pin electrical socket is also included. The towbar is approved for a towing capacity of up to 2,400kg (braked) from the Macan S upwards (Macan 2,000kg) and a towing capacity of 750kg for all Macan models (unbraked). A noseweight of up to 96kg is supported from the Macan S (Macan 80kg). As standard, the vehicle comes ready-equipped with all the necessary preparations. The towbar system is optionally available for all Macan models.





**In life as on the road:  
charisma is everything.**

永興  
SHENG YONG XING  
ROAST DUCK RESTAURANT



Lighting and  
assistance systems.



1



2



3



5



4



6

## Headlights.

We always have our eye on our next destination. To see this more clearly, the Macan and Macan S are fitted with LED main headlights as standard. With its high-quality, delicately shaped LED main headlights including PDLS, the Macan Turbo offers a perfect combination of design and functionality – optionally featuring PDLS Plus. Unmistakably Porsche: the four-point daytime running lights in the LED main headlights and the four-point brake lights, also integrated into the LED technology of the taillight strip.

### **Porsche Dynamic Light System (PDLS).**

PDLS adapts the light distribution to your speed. The dynamic cornering lights turn the main headlights into the curve, depending on the steering angle and driving speed, while the static cornering lights activate auxiliary headlights to illuminate narrow curves or turns. Standard on the Macan Turbo.

### **Porsche Dynamic Light System Plus (PDLS Plus).**

The optionally available LED main headlights including PDLS Plus boast an unmistakable look, with their stylistic four-point LED spot lights. The brightness of these headlights ensures optimum illumination of the road head. As well as the standard dynamic and static cornering lights and speed-sensitive headlight range control, adverse weather function is another essential feature. The Porsche Dynamic Light System Plus (PDLS Plus) also includes: the dynamic main beam control and Intersection Assistant function based on navigation data, for enhanced illumination of your surroundings. So you see what's going on around you all the sooner.

1 Macan with LED main headlights

2 Macan Turbo with LED main headlights including Porsche Dynamic Light System Plus (PDLS Plus)

3 Macan Turbo: daytime running lights with LED main headlights including Porsche Dynamic Light System Plus (PDLS Plus)

4 Macan Turbo: dipped beam with LED main headlights including Porsche Dynamic Light System Plus (PDLS Plus)

5 Macan Turbo: dipped beam and cornering lights with LED main headlights including Porsche Dynamic Light System Plus (PDLS Plus)

6 Macan Turbo: main beam with LED main headlights including Porsche Dynamic Light System Plus (PDLS Plus)

# Assistance systems.

The better the tuning of everything, the more dynamic, comfortable, efficient and safer you get ahead. Porsche assistance systems are aimed at active, sporty driving, allowing you to enjoy the experience you expect of a Porsche.

## Lane Departure Warning.

A camera in the rear-view mirror housing monitors the road in front of the vehicle. If you approach a line and threaten to leave your lane without having indicated, the system issues a warning tone. Lane Departure Warning is standard on the Macan, as is cruise control.

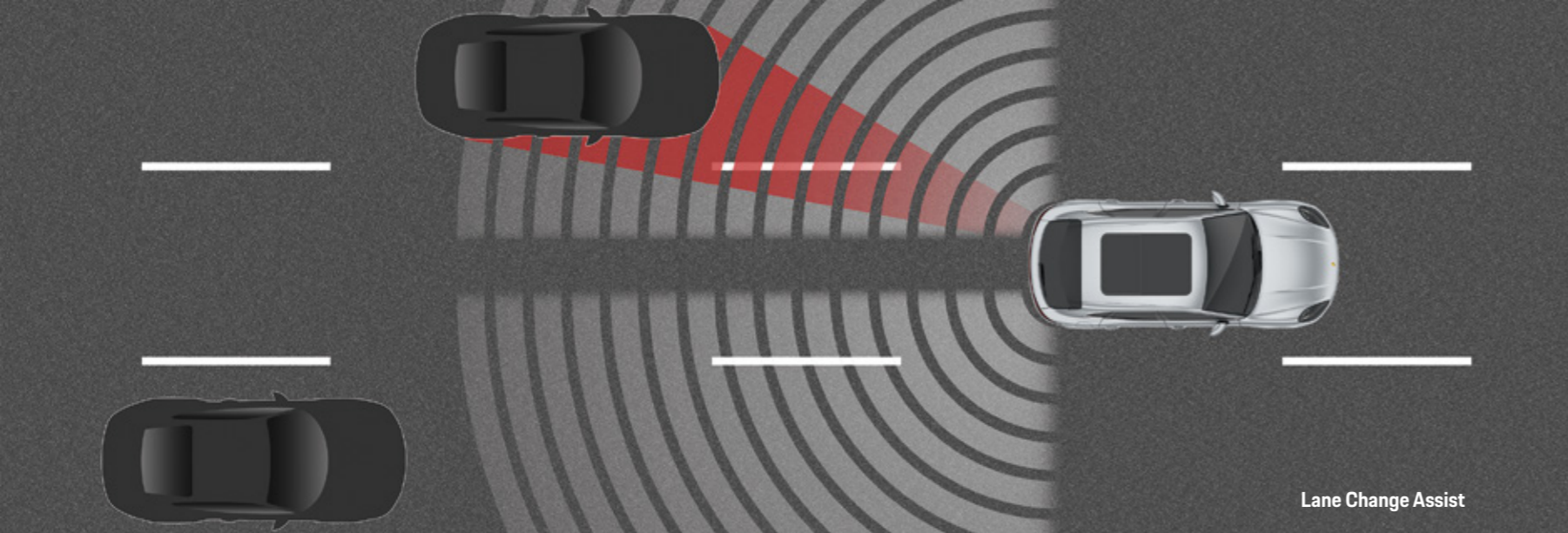
## Traffic Jam Assist including adaptive cruise control.

Traffic Jam Assist eases the burden on the driver when congestion is encountered on well-maintained country roads and motorways. At speeds of up to approximately 37mph, the system uses gentle steering inputs to keep the vehicle in the middle of the lane, regulates the distance from vehicles in front and follows the queue ahead where system limitations allow. In the process, Traffic Jam Assist takes into consideration roadway markings and other vehicles ahead of you on the road. The benefit? Appreciable stress relief and greater comfort on long journeys. The package includes adaptive cruise control, Lane Keeping Assist and Lane Change Assist for all Macan models.

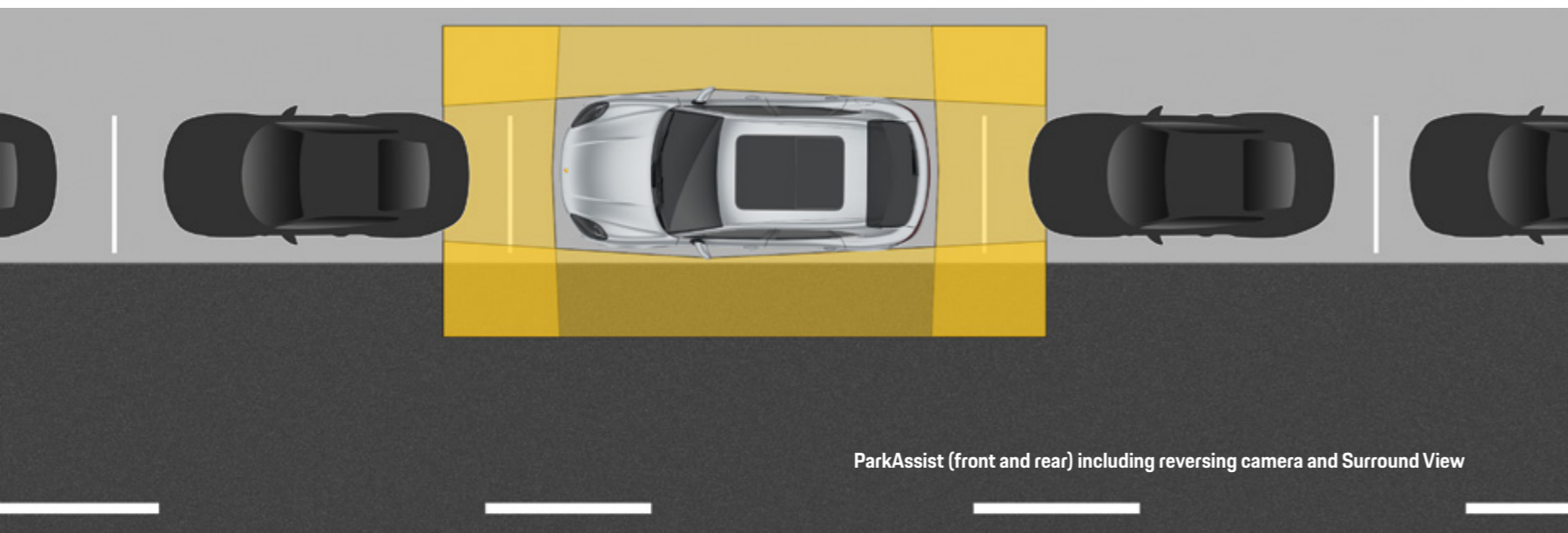
## Adaptive cruise control (ACC).

This system regulates the speed of your Macan fully independently in line with the speed of the vehicle in front. A radar sensor in the front apron monitors the area in front of your vehicle. If you approach another vehicle that is travelling slower than your selected cruising speed, the system slows the engine or gently applies the brakes. This continues until the distance that you have pre-set is attained. Your Macan will now maintain its distance to the vehicle in front. If this continues to slow down, adaptive cruise control will keep on reducing your speed, right down to a halt, if necessary. When the road ahead is free again, your Macan will accelerate back up to the cruising speed originally set. An impending collision with vehicles and pedestrians is recognised, in accordance with system limitations. In this case, the system alerts the driver by an audible and visual warning as well as a jolt of the brakes. It can also intervene in the braking process, if required, to reduce the collision speed or possibly avoid the collision. Optional for all Macan models.





Lane Change Assist



ParkAssist (front and rear) including reversing camera and Surround View

**Lane Change Assist.**

Lane Change Assist monitors the areas behind the vehicle and its blind spots. Between a speed of 18 and 155mph, the system issues a visual warning signal in the exterior mirrors whenever a vehicle approaches your vehicle from behind or enters one of your blind spots. In this way, it improves comfort and safety, particularly on motorways. However, the system does not actively intervene to control the vehicle and can be disabled at any time. When towing a trailer, this function is not available. Optional for all Macan models.

**Lane Keeping Assist.**

Lane Keeping Assist uses a camera installed in the front end to detect divider line markings on the road. If the car threatens to cross one of the lines, the system independently steers the vehicle back into the centre of the lane at speeds of between approximately 37 and 155mph. This correction is accompanied by a soft steering pulse. Of course, you are able to override the system at any time. The function may also be deactivated in specific conditions, e.g. bad weather. Optional for all Macan models.

**Speed limit indicator.**

The speed limit indicator informs you of speed restrictions and the start and end of no overtaking zones detected by the integral camera. The information is shown on the instrument cluster screen and PCM touchscreen display. If a road sign is missed – for example due to heavy rain or darkness – the speed limit stored in the navigation module is automatically displayed. The benefit of this function is that it allows you to concentrate better on the road ahead. Optional for all Macan models.

**ParkAssist front and rear.**

ParkAssist warns you of obstacles detected to the front and rear of the vehicle. Its ultrasonic sensors are harmoniously integrated in the front and rear end. The audible alert is supplemented by a visual warning in the central 10.9-inch touchscreen display, showing a schematic representation of the vehicle from a bird's eye perspective. Along with a graphic, depicting your proximity to these obstacles. Optional for all Macan models.

**Reversing camera.**

The reversing camera facilitates precise reverse parking and manoeuvring and also assists when hitching a trailer. The camera image and dynamic guidelines on the PCM touchscreen display help to illustrate the predicted course of the vehicle given the current position of the steering wheel. Optional for all Macan models.

**Surround View.**

With Surround View, four cameras located in the front apron, exterior mirrors and rear generate an all-round image of the car and its immediate surroundings. In PCM, the driver can choose between a bird's eye view, side view and corner view – noticeable relief on the 10.9-inch touchscreen display of PCM when parking and manoeuvring. Optional for all Macan models.



**Better than any template:  
your own unique approach.**



Personalisation.



**Your inspiration.  
Our passion.**

## Porsche Exclusive Manufaktur.

Our wealth of experience goes back a long way. Since the very beginning, we at Porsche have been dedicated to realising customer wishes as part of our special request service. Known until 1986 as the Porsche 'Sonderwunschprogramm', and then Porsche Exclusive, today we call it Porsche Exclusive Manufaktur.

We love what we do. We love our work. Every seam, every square inch of leather, and every single other fine detail receives the same devotion. We transfer our experience and passion together with your inspiration to the car – and that's how we bring dreams to life. Directly from the factory.

None of this would be possible without originality, enthusiasm and attention to detail, and it all starts with your personal consultation. That's because we always keep one goal in mind: to fulfil your particular wishes and requirements, turning 'a' Porsche into 'your' Porsche.

And how do we turn your dreams into reality? With composure and meticulous care, by means of precision handcrafting and the use of exquisite materials such as leather, fine wood or aluminium. Added value is achieved through dedication and finesse. Or to put it another way: the intersecting of sporty performance, comfort, design and your personal taste. A Porsche with your signature touch.

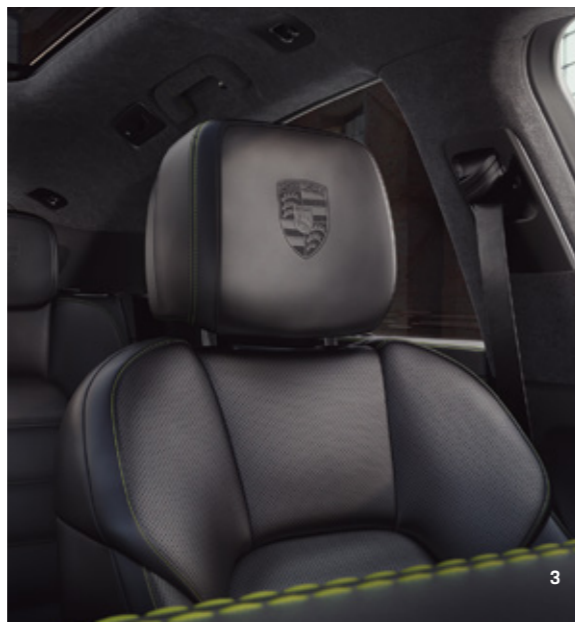
We offer a wide range of personalisation options, with visual and technical enhancements for the interior and exterior. From a single alteration to extensive modifications. Your inspiration is our passion.

Be inspired by our examples on the following pages and visit [www.porsche.co.uk/exclusive-manufaktur](http://www.porsche.co.uk/exclusive-manufaktur) to learn everything you need to know about configuring these extraordinary vehicles.



**A configuration example from the Porsche Exclusive Manufaktur.**

- 1 Tinted LED main headlights including Porsche Dynamic Light System Plus (PDLS Plus)
- 2 21-inch Sport Classic wheels painted in black (high-gloss), sideblades painted in black (high-gloss), door handles painted in black (high-gloss)
- 3 Porsche Crest on headrests (front and outer rear seats), interior trim package with decorative stitching in contrasting colour (Mamba Green)
- 4 Interior package painted in Mamba Green Metallic, interior trim package with decorative stitching in contrasting colour (Mamba Green), personalised floor mats with leather edging
- 5 SportDesign package painted in black (high-gloss), door handles painted in black (high-gloss), tinted LED main headlights including Porsche Dynamic Light System Plus (PDLS Plus)



**The Macan Turbo in Mamba Green Metallic.**



The Macan S in Volcano Grey Metallic.

1



2



3



4



5

### A configuration example from the Porsche Exclusive Manufaktur.

- 1 20-inch Macan Turbo wheels painted in Volcano Grey Metallic, SportDesign package, Sports tailpipes in black, SportDesign exterior mirrors
- 2 SportDesign exterior mirrors
- 3 20-inch Macan Turbo wheels painted in Volcano Grey Metallic
- 4 Heated multifunction sports steering wheel in Anthracite Chestnut, instrument dials in Mojave Beige, Sport Chrono stopwatch dial in Mojave Beige
- 5 Seat centres in leather in contrasting colour (black), Anthracite Chestnut interior package, seat belts in Mojave Beige, Porsche Crest on headrests (front and outside rear seats)

# Exterior colours.

## Solid exterior colours.



White



Black

## Special colours.



Crayon



Carmine Red



Miami Blue

## Metallic exterior colours.



Volcano Grey Metallic



Carrara White Metallic



Mahogany Metallic



Dolomite Silver Metallic



Sapphire Blue Metallic



Night Blue Metallic



Jet Black Metallic



Mamba Green Metallic

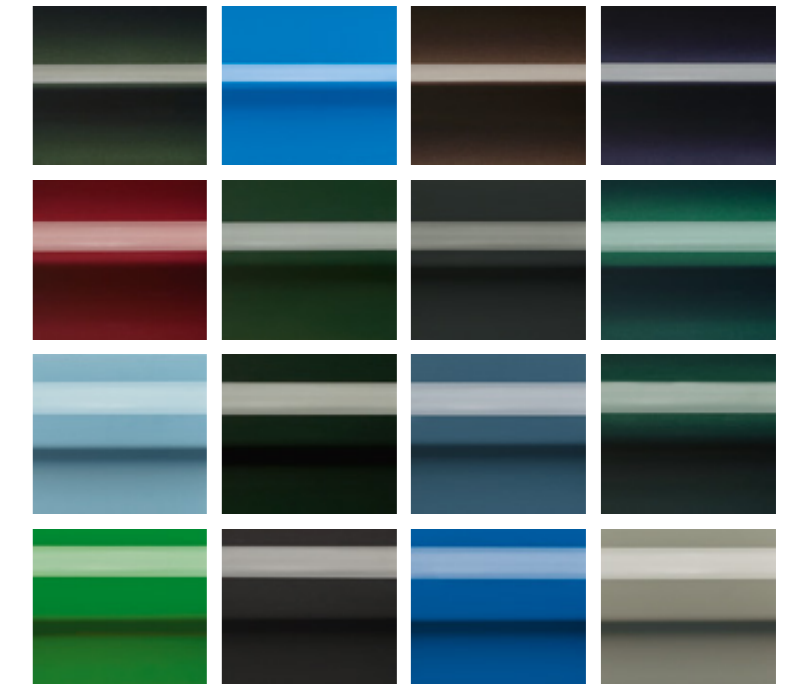
## Colour of your choice<sup>1)</sup>

Highlight the individuality of your Porsche with a colour developed specially for you, based on your sample.

<sup>1)</sup> Subject to availability. Please speak to your Porsche Centre for further details.

## Exterior colours to sample.

Choose from an extended range of solid and metallic colours with a number of historic Porsche, classic and modern colours.



# Interior colours.

## Standard interior colours Standard interior.



Black  
(roof lining and carpet: black)



Agate Grey  
(roof lining and carpet: Agate Grey)



Two-tone: black and Mojave Beige  
(roof lining and carpet<sup>2)</sup>: black)

## Standard interior colours Leather package<sup>1)</sup>.



Black  
(roof lining and carpet: black)



Agate Grey  
(roof lining and carpet: Agate Grey)



Two-tone: black and Mojave Beige  
(roof lining and carpet<sup>2)</sup>: black)



Two-tone: black and Garnet Red  
(roof lining and carpet<sup>2)</sup>: black)

## Standard interior colours Leather interior.



Black  
(roof lining and carpet: black)



Agate Grey  
(roof lining and carpet: Agate Grey)



Two-tone: black and Mojave Beige  
(roof lining and carpet<sup>2)</sup>: black)



Two-tone: black and Garnet Red  
(roof lining and carpet<sup>2)</sup>: black)



Two-tone: Agate Grey and Pebble Grey  
(roof lining and carpet<sup>2)</sup>: Agate Grey)

## Special interior colours Natural leather.



Espresso  
(roof lining and carpet: Espresso)

1) The leather package (partial leather interior) incorporates leather on the dashboard, lid of the centre console storage compartment, seat centres, inner seat bolsters, headrests, armrests, door panels and door pulls. In conjunction with a two-tone colour combination, leather items are in a contrasting colour.  
2) Carpet in luggage compartment in darker colour.

# Interior packages.



Black (standard)



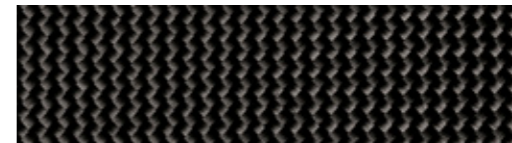
Black (high-gloss)



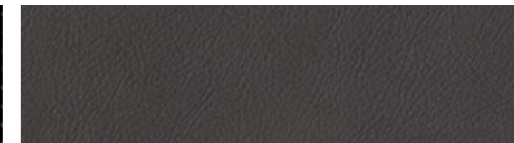
Interior package painted *Porsche Exclusive Manufaktur*



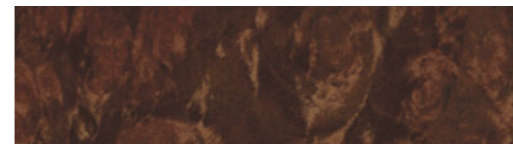
Brushed aluminium



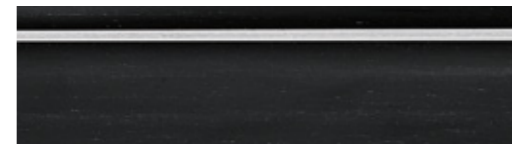
Carbon



Leather interior package *Porsche Exclusive Manufaktur*



Dark walnut<sup>1)</sup>



Anthracite chestnut with aluminium inlay<sup>1),2)</sup> *Porsche Exclusive Manufaktur*

1) Since wood is a natural product, there may be variations in colour and grain.  
2) Decorative steering wheel also available from Porsche Exclusive Manufaktur.

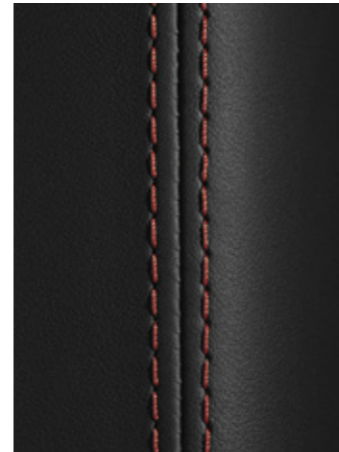
# Enhanced interior personalisation.

How about even more design freedom in the vehicle interior? The interior packages with decorative stitching and seat centres in leather in contrasting colour from Porsche Exclusive Manufaktur make it possible to configure your Macan to meet your individual needs, while lending additional accents to the interior. The packages are available in all standard colours. Whether used individually or in combination – the result is always a harmonious overall image that makes your Macan one thing above all else: one-of-a-kind.

Be inspired by our colour combinations. Or visit [www.porsche.co.uk](http://www.porsche.co.uk) to access the Porsche Car Configurator.



— Interior trim package with decorative stitching in contrasting colour  
 — Seat centres in leather in contrasting colour



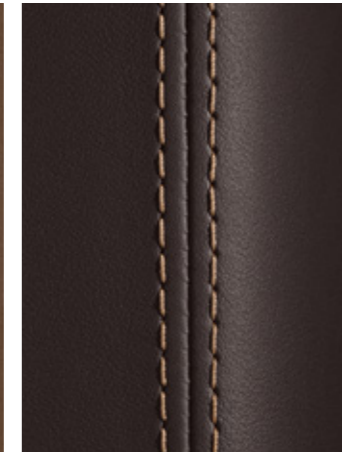
Leather: black  
 Decorative stitching: Garnet Red



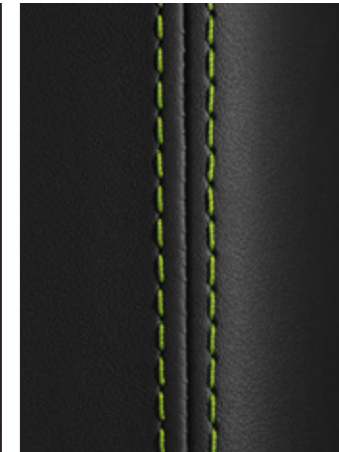
Leather: Agate Grey  
 Decorative stitching: Pebble Grey



Leather: Mojave Beige  
 Decorative stitching: black



Leather: Espresso  
 Decorative stitching: Mojave Beige



Leather: black  
 Decorative stitching: Acid Green



Leather: black  
 Seat centres in leather: Garnet Red  
 Decorative stitching: Garnet Red



Leather: Mojave Beige  
 Seat centres in leather: black  
 Decorative stitching: black



Leather: Agate Grey  
 Seat centres in leather: Pebble Grey  
 Decorative stitching: Pebble Grey



Leather: Espresso  
 Seat centres in leather: Mojave Beige  
 Decorative stitching: Mojave Beige



Leather: black  
 Seat centres in leather: Pebble Grey  
 Decorative stitching: Garnet Red

# Wheels.



8

- 1 18-inch Macan wheel
  - 2 18-inch Macan S wheel
  - 3 19-inch Macan Sport wheel
  - 4 19-inch Macan Design wheel
  - 5 20-inch Macan Turbo wheel in Dark Titanium with highly polished surfaces (exclusive to the Macan Turbo)
  - 6 20-inch Macan Turbo wheel in satin platinum
  - 7 21-inch RS Spyder Design wheel
  - 8 21-inch 911 Turbo Design wheel
  - 9 21-inch Sport Classic wheel
- Porsche Exclusive Manufaktur*



1



2



3



4



5



6



7



8



9

# Porsche Exclusive Manufaktur.



Tinted LED taillights and light strip

*Porsche Exclusive Manufaktur*



21-inch Sport Classic wheel painted in exterior colour

*Porsche Exclusive Manufaktur*



SportDesign exterior mirrors painted in exterior colour

*Porsche Exclusive Manufaktur*



Interior package painted in exterior colour

*Porsche Exclusive Manufaktur*



Sports tailpipes in black

*Porsche Exclusive Manufaktur*



20-inch Macan Turbo wheel painted in black (high-gloss)

*Porsche Exclusive Manufaktur*



Model logo on centre console armrest

*Porsche Exclusive Manufaktur*



Porsche Crest on headrests (front seats)

*Porsche Exclusive Manufaktur*

# Personalisation options.



LED main headlights including PDLS Plus



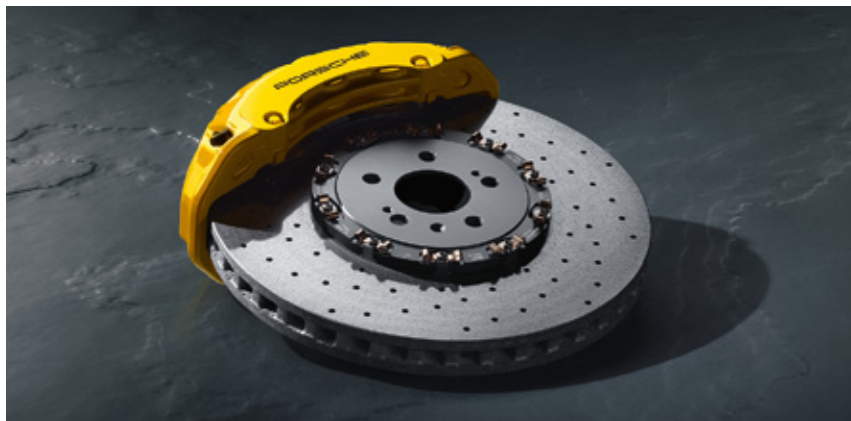
Panoramic roof system



Sport Chrono Package with mode switch



Sideblades in Brilliant Silver



Porsche Ceramic Composite Brake (PCCB)



21-inch 911 Turbo Design wheel



Adaptive Sports seats, front (18-way)



Burmester® High-End Surround Sound System



# Porsche Tequipment.

With Porsche Tequipment products developed specifically for your Macan, you can style it entirely to your own preference. Right from the start, the same rules that apply to our vehicles also apply to the Porsche Tequipment products: developed, tested and proven at the Development Centre in Weissach. By the same Porsche engineers and designers who made your car. Designed with the complete vehicle in mind and precisely tailored to your Porsche.

And your original car warranty? It will remain completely intact, whichever Tequipment products

you ask your Porsche Centre to fit. To discover more about Porsche Tequipment, please consult your Porsche Centre. Or visit [www.porsche.co.uk/tequipment](http://www.porsche.co.uk/tequipment) to view the information online. Scan the QR code to go straight to our Tequipment Accessories Finder, where you can view all the products in detail.



## 1 Roof boxes

Lockable plastic boxes in black (high-gloss), with a capacity of approximately 320 or 520 litres.

## 2 Care sets

Interior and exterior care products optimally suited to your Porsche.

## 3 Wheels with summer tyres

For outstanding individuality, agility and safety. And for even greater driving pleasure.



# Porsche Car Configurator.

The Macan dream comes in many shapes and colours. The Porsche Car Configurator allows you to quickly and intuitively discover which dream suits you the best.

In the search for your genuine dream car, you can now not only create your personal configuration on your computer and tablet, but also on your smartphone. Using freely selectable perspectives and 3D animations on your desktop. Individual recommendations help you to make the right decision.

Visit [www.porsche.co.uk](http://www.porsche.co.uk) to access the Porsche Car Configurator and learn more about Fascination Porsche.



# Porsche World.



## Porsche Centres

Your Porsche Centre can assist you with every aspect of purchasing and owning your Porsche. You will also find a wide range of products and services, including genuine Porsche parts and top-quality accessories.



## Porsche Exclusive Manufaktur

At Porsche Exclusive Manufaktur, we make our customers' personal wishes a reality. With custom work. By hand. With care and dedication. To turn something special into something unique. [www.porsche.com/exclusive-manufaktur](http://www.porsche.com/exclusive-manufaktur)



## Porsche Factory Collection

Get started with your Porsche directly from the Manufaktur: in Zuffenhausen with the vehicle handover against a historical backdrop in the historic Werk 1 or in Leipzig with intensive driving induction on the race track.



## Porsche Tequipment

Personalise your Porsche at any time after purchase with our range of accessories. You will also find all our available products online at [www.porsche.com/tequipment](http://www.porsche.com/tequipment) using the Tequipment Accessories Finder.



## Porsche Driver's Selection

With leisurewear, model cars, timepieces, leather goods, luggage specifically tailored to Porsche luggage compartments and other intelligent accessories, there are plenty of opportunities to indulge your passion for Porsche off the road, too.



## Porsche Travel Experience

Embark on a thrilling adventure and feel the power of Porsche. Stay in top-class hotels and dine in five-star restaurants – in the most beautiful places on Earth. To find out more, call +49 711 911-23360. E-mail: [travel@porscheexperience.de](mailto:travel@porscheexperience.de)



## Porsche Track Experience

Develop your skill and explore your Porsche with the Porsche Sport Driving School. Learn about events at some of the world's most famous racing venues, call +49 711 911-23364. E-mail: [track@porscheexperience.de](mailto:track@porscheexperience.de)

## Porsche Service

Your expert partner for all current Porsche models as well as old and modern classics, whether your car needs servicing, routine care or special repairs.

## Porsche Assistance

Enjoy peace of mind with our exclusive breakdown and accident recovery service. Membership is free when you buy a new Porsche.

## Porsche Approved

So that our vehicles remain reliable and retain their value whether new or previously owned, all Porsche Approved cars meet the most stringent Porsche quality standards across the world. Each car is backed by the Porsche Approved warranty.

## Porsche Financial Services

Discover our financial services and realise your dream of the sports car with the solutions we have to offer. Uncomplicated. Individual. Tailored.

## Porsche Clubs

Since the first Porsche Club was founded in 1952, their number has grown to 675 with over 200,000 members worldwide. To find out more, go to [www.porsche.com/clubs](http://www.porsche.com/clubs) or call +49 711 911-77578. E-mail: [communitymanagement@porsche.de](mailto:communitymanagement@porsche.de)

## Christophorus

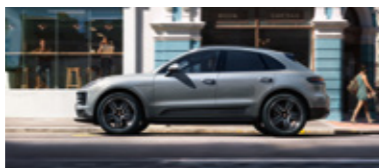
Published five times a year, our magazine for Porsche owners offers news, interviews and a variety of features from the world of Porsche. Visit [www.porsche.com/christophorus-magazine](http://www.porsche.com/christophorus-magazine) where all articles are available to you free of charge.

## Porsche Classic

Your specialist source for genuine Porsche parts as well as restoration services for all Porsche classics. Visit [www.porsche.com/classic](http://www.porsche.com/classic) to find out more.

## Porsche Museum

More than 80 vehicles at our headquarters in Stuttgart-Zuffenhausen await to take you on a journey through Porsche history. See icons such as the 356, 911 and 917 presented in an atmosphere you can't experience anywhere else.



**Technical data.**



SHOT  
CAFE

Engine	Macan	Macan S
Type	R4 turbo engine	V6 turbo engine
Number of cylinders	4	6
Valves/cylinders	4	4
Effective displacement	1,984cm <sup>3</sup>	2,995cm <sup>3</sup>
Max. power (DIN) of combustion engine at rpm	180kW (245PS) 5,000–6,750	260kW (354PS) 5,400–6,400
Max. torque of combustion engine at rpm	370Nm 1,600–4,500	480Nm 1,360–4,800
Fuel grade	Super Plus (RON 98)	Super (RON 95)
<b>Transmission</b>		
Drive	Porsche Traction Management (PTM): active all-wheel drive system with an electronically variable, map-controlled multi-plate clutch, automatic brake differential (ABD) and anti-slip regulation (ASR)	Porsche Traction Management (PTM): active all-wheel drive system with an electronically variable, map-controlled multi-plate clutch, automatic brake differential (ABD) and anti-slip regulation (ASR)
Transmission	7-speed Porsche Doppelkupplung (PDK)	7-speed Porsche Doppelkupplung (PDK)
All-wheel torque distribution, front/rear	Variable	Variable

Engine	Macan Turbo
Type	V6 twin-turbo engine
Number of cylinders	6
Valves/cylinders	4
Effective displacement	2,894cm <sup>3</sup>
Max. power (DIN) of combustion engine at rpm	324kW (440PS) 5,700–6,600
Max. torque of combustion engine at rpm	550Nm 1,800–5,600
Fuel grade	Super Plus (RON 98)
<b>Transmission</b>	
Drive	Porsche Traction Management (PTM): active all-wheel drive system with an electronically variable, map-controlled multi-plate clutch, automatic brake differential (ABD) and anti-slip regulation (ASR)
Transmission	7-speed Porsche Doppelkupplung (PDK)
All-wheel torque distribution, front/rear	Variable

Chassis	Macan	Macan S
Front axle	Fully independent double wishbone suspension	Fully independent double wishbone suspension
Rear axle	Self-tracking trapezoidal-link suspension	Self-tracking trapezoidal-link suspension
Steering	Power-assisted (electromechanical)	Power-assisted (electromechanical)
Turning circle diameter	11.96m	11.96m
Brakes	Four-piston aluminium monobloc fixed brake calipers at front; single-piston combination floating brake calipers at rear, internally vented discs, front and rear	Six-piston aluminium monobloc fixed brake calipers at front; single-piston combination floating brake calipers at rear, internally vented discs, front and rear
Brake discs, front axle diameter/thickness	345mm/30mm	360mm/36mm
Brake discs, rear axle diameter/thickness	330mm/22mm	330mm/22mm
Wheels	Front: 8 J × 18 ET 21, Rear: 9 J × 18 ET 21	Front: 8 J × 18 ET 21, Rear: 9 J × 18 ET 21
Tyres	Front: 235/60 R 18, Rear: 255/55 R 18	Front: 235/60 R 18, Rear: 255/55 R 18

#### Weights

Unladen weight (DIN)	1,795kg	1,865kg
Unladen weight (EC) <sup>1)</sup>	1,870kg	1,940kg
Permissible total weight	2,510kg	2,580kg
Maximum payload	715kg	715kg
Maximum permissible roof load with Porsche roof transport system	75kg	75kg
Maximum trailer load (braked)	2,000kg	2,400kg

#### Performance

Top speed	139mph	157mph
Acceleration 0–62mph	6.7secs	5.3secs
Acceleration 0–62mph (seconds) with Launch Control <sup>2)</sup>	6.5secs	5.1secs
Acceleration 0–99mph	17.5secs	13.0secs
Acceleration 0–99mph with Launch Control <sup>2)</sup>	17.3secs	12.8secs
Overtaking acceleration (49–74mph)	4.9secs	3.6secs

Chassis	Macan Turbo
Front axle	Fully independent double wishbone suspension
Rear axle	Self-tracking trapezoidal-link suspension
Steering	Power-assisted (electromechanical)
Turning circle diameter	11.96m
Brakes	Six-piston aluminium monobloc fixed brake calipers at front; single-piston combination floating brake calipers at rear, internally vented discs, front and rear
Brake discs, front axle diameter/thickness	390mm/38mm
Brake discs, rear axle diameter/thickness	356mm/28mm
Wheels	Front: 9 J × 20 ET 26, Rear: 10 J × 20 ET 19
Tyres	Front: 265/45 R 20, Rear: 295/40 R 20

#### Weights

Unladen weight (DIN)	1,945kg
Unladen weight (EC) <sup>1)</sup>	2,020kg
Permissible total weight	2,580kg
Maximum payload	635kg
Maximum permissible roof load with Porsche roof transport system	75kg
Maximum trailer load (braked)	2,400kg

#### Performance

Top speed	167mph
Acceleration 0–62mph	4.5secs
Acceleration 0–62mph (seconds) with Launch Control <sup>2)</sup>	4.3secs
Acceleration 0–99mph	10.5secs
Acceleration 0–99mph with Launch Control <sup>2)</sup>	10.3secs
Overtaking acceleration (49–74mph)	2.9secs

1) Weight is calculated in accordance with the relevant EC Directives and is valid for vehicles with standard specification only. Optional equipment increases this figure. The figure given includes 75kg for the driver.

2) In conjunction with the optional Sport Chrono Package.

Volumes	Macan	Macan S	Macan Turbo
Luggage compartment capacity to top of rear bench seat	488 litres	488 litres	488 litres
Luggage compartment capacity with rear bench seat folded down	1,503 litres	1,503 litres	1,503 litres
Tank capacity	65 litres	65 litres	75 litres
Dimensions			
Length	4,696mm	4,696mm	4,684mm
Width including (excluding) exterior mirrors	2,098mm (1,923mm)	2,098mm (1,923mm)	2,098mm (1,926mm)
Height (including roof rails)	1,624mm (1,630mm)	1,624mm (1,630mm)	1,624mm (1,630mm)
Wheelbase	2,807mm	2,807mm	2,807mm
Approach angle (rear)	16.9° (23.6°)	16.9° (23.6°)	23.8° (23.6°)
Breakover angle	16.9°	16.9°	16.9°
Maximum fording depth with standard suspension (DIN unladen)	300mm	300mm	300mm
Ground clearance with standard suspension (DIN unladen)	205mm	205mm	205mm

Fuel consumption (WLTP) <sup>1</sup> (l/100km (mpg))	Macan	Macan S	Macan Turbo
Low	14.0–12.7 (20.2–22.2)	16.4–14.9 (17.2–19.0)	16.2–15.6 (17.4–18.1)
Medium	10.8–9.6 (26.2–29.4)	14.9–11.5 (24.6–26.4)	11.8–11.2 (23.9–25.2)
High	9.7–8.6 (29.1–32.8)	10.2–9.6 (27.7–29.4)	10.4–10.0 (27.2–28.2)
Extra High	11.0–10.6 (25.7–26.6)	11.7–11.1 (24.1–25.7)	11.9–11.3 (23.7–25.0)
Combined	11.0–10.0 (25.7–28.2)	11.8–11.0 (23.9–25.7)	12.0–11.4 (23.5–24.8)

#### Emissions (NEDC equivalent) (combined)

CO <sub>2</sub> emissions combined in g/km	185–181	204–196	224
Particulate filter	Yes	Yes	Yes
Emissions standard	Euro 6d-TEMP-EVAP-ISC	Euro 6d-TEMP-EVAP-ISC	Euro 6d-TEMP-EVAP-ISC

1) Data determined in accordance with the measurement method required by law. Since 01 September 2018 all new cars are approved in accordance with the Worldwide Harmonized Light Vehicles Test Procedure (WLTP), a more realistic test procedure to measure fuel consumption and CO<sub>2</sub> emissions. You can find more information on WLTP at [www.porsche.com/wltp](http://www.porsche.com/wltp). From 01 January 2019, all fuel consumption figures are shown as determined in accordance with WLTP. CO<sub>2</sub> figures shown as NEDC-equivalent values, as CO<sub>2</sub> based taxation will continue to be based on an NEDC value (derived from WLTP) until 06 April 2020. Fuel economy and CO<sub>2</sub> emission figures are only intended as a means of comparing different types of vehicles tested under the same test cycle. New WLTP homologated vehicles are therefore not directly comparable with any vehicles tested under NEDC. For Plug-in Hybrid Electric Vehicle (PHEV) range and Equivalent All Electric Range (EAER) figures are determined with the battery fully charged, using a combination of both battery power and fuel.

Values are provided for comparison only. To the extent that fuel consumption or CO<sub>2</sub> values are given as ranges, these do not relate to a single, individual car and do not constitute part of the offer. Extra features and accessories (attachments, tyre formats etc.) can change relevant vehicle parameters such as weight, rolling resistance and aerodynamics which may result in a change in fuel consumption and CO<sub>2</sub> values. Additionally, weather and traffic conditions, as well as individual driving styles, can all affect the actual fuel consumption, electricity consumption, and CO<sub>2</sub> emissions of a car.

Tyre type	Size	Energy efficiency class/ rolling resistance	Wet grip class	External rolling noise* (class)	External rolling noise (dB)
Summer tyres	235/60 R 18	C	A		73–71
	255/55 R 18	C	A		73–71
	235/55 R 19	C–B	A		71–69
	255/50 R 19	C–B	B–A		72–70
	265/45 R 20	C	B–A		71–67
	295/40 R 20	C–B	B–A		71–69
	265/40 R 21	C	B–A		72–71
	295/35 R 21	C–B	B–A		74–71

For logistical and technical reasons relating to the production process, we are unable to accept orders for a particular make of tyre.

\* Quiet rolling noise, Moderate rolling noise, Loud rolling noise.



Living life to the fullest. And always in the thick of things. On the road and on the Internet. Easy connectivity to social networks will maintain your flexibility – wherever you are.

[www.porsche.com/macan](http://www.porsche.com/macan)



[www.youtube.com/porsche](http://www.youtube.com/porsche)



[www.facebook.com/porsche](http://www.facebook.com/porsche)



[www.twitter.com/porsche](http://www.twitter.com/porsche)



[www.pinterest.com/porsche](http://www.pinterest.com/porsche)



[www.instagram.com/porsche](http://www.instagram.com/porsche)



© Dr. Ing. h.c. F. Porsche AG, 2019

All text, images and other information in this catalogue are subject to the copyright of Dr. Ing. h.c. F. Porsche AG.

Effective from: 08/19

Printed in Germany  
WSLA2001000725 EN/UK

Any reproduction, duplication or other use is prohibited without the prior written consent of Dr. Ing. h.c. F. Porsche AG.

Dr. Ing. h.c. F. Porsche AG supports the use of paper from sustainable forests. The paper for this sales catalogue is certified in accordance with the strict regulations of the FSC® (Forest Stewardship Council®).

Porsche, the Porsche Crest, 911, 918 Spyder, Macan, PCCB, PCM, PSM, PDK, Tequipment and other marks are registered trademarks of Dr. Ing. h.c. F. Porsche AG.

Dr. Ing. h.c. F. Porsche AG  
Porscheplatz 1  
70435 Stuttgart  
Germany  
[www.porsche.com](http://www.porsche.com)