

2020 BUICK

# ENVISION



## **THE PERFECT BALANCE OF EVERYTHING THAT MATTERS**

Buick invites you to  
experience our newest lineup  
of innovative vehicles, each  
designed to enhance your life  
from the very first drive.

We've styled exteriors with  
sleek, modern lines.

We've filled interiors with  
inviting, premium materials.

Plus, we've engineered  
each vehicle with surprising  
roominess, power and  
technology so you can make  
more of every day.

Explore the 2020 Envision and  
discover what it means to  
drive an SUV built to enhance  
every moment of your life.

**ENVISION HIGHLIGHTS**

■  
Spacious and refined accommodations for five

■  
QuietTuning™ technology with Active Noise Cancellation to help reduce, block and absorb unwanted noise

■  
Available Head-Up Display to project critical driving information onto the windshield

■  
Available 2.0L Turbo engine paired with an intelligent All-Wheel Drive system with active twin clutch

■  
Suite of available active safety technologies<sup>1</sup>

<sup>1</sup>Read the vehicle Owner's Manual for important feature limitations and information.





## A DESTINATION IN ITSELF

Envision blends style and performance with an exceptional degree of refinement. From its LED-enhanced taillamps and available LED headlamps to its available 19" aluminum wheels, Envision's presence is equally elegant and athletic.



Envision Premium II shown in Satin Steel Metallic with available features.



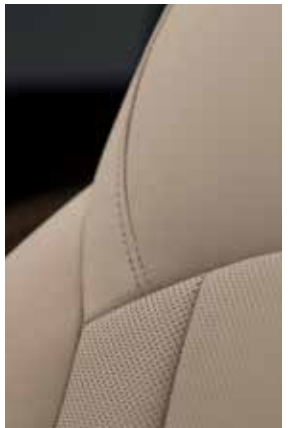
## THINK OF IT AS A SPA YOU VISIT EVERY DAY

Inspiration for Envision's interior design came from the places you go to relax in style: boutique hotels, day spas and other quiet retreats. With its refined materials and Moon White ambient lighting, Envision is your sanctuary.

**SOOTHE YOUR SENSES** Envision provides a wealth of amenities and conveniences, like standard heated front seats that are eight-way power adjustable and include power lumbar support. An available heated steering wheel warms cold hands. For warm summer days, the available cooled front seats are a welcome feature. There's even an available in-vehicle air ionizer to help keep cabin air fresher.

**ATTENTION TO DETAIL AND PASSENGERS** No matter where you're seated, Envision delivers. USB ports<sup>1</sup> for smartphones and other personal devices are available in both the first and second rows. Sliding second-row seating with adjustable recline affords ample leg room, and available heated rear outboard seats keep your passengers cozy. Add available tri-zone HVAC automatic climate control and everyone can define comfort on their own terms.

<sup>1</sup>Not compatible with all devices.



Envision Essence interior shown in Light Neutral with Ebony accents and available features.

## WELCOME TO YOUR QUIET ZONE

The Envision interior is warm, quiet and inviting to drivers and passengers alike. Buick QuietTuning technology with Active Noise Cancellation helps reduce, block and absorb unwanted noise by utilizing many measures including triple door seals and acoustic laminated glass.

All this, so you can enjoy conversations with your passengers, quiet time for yourself or fully appreciate the available Bose® premium audio system with seven speakers and amplifier.



Envision Premium II shown in Satin Steel Metallic with available features.



## AN SUV THAT RUNS ON GOOD IDEAS

There's something special about a truly intuitive cabin, with everything in its place. Important features and controls are thoughtfully designed for easy access. The available Head-Up Display projects critical information onto the windshield to help you keep your eyes on the road ahead. Envision's unique, dual-winged center console is spacious inside and once open can be easily accessed from the first or second row. Tasteful touches like available French stitched, perforated leather-appointed seating complete the experience.



Envision Premium II interior shown in Dark Galvanized with Ebony accents and available features.



Envision Premium II shown in Dark Moon Blue Metallic with available features and dealer-installed 19" aluminum accessory wheels with Midnight Silver painted finish. Use only GM-approved tire and wheel combinations.

## VERSATILITY HAS FOUND ITS STYLE



**CRAFTED FOR MULTITASKERS** Envision makes whatever you do look effortless. There's seating for five adults. If cargo takes precedence, there's considerable space with both rear seats folded down. Available accessories like nets and organizers offer thoughtful solutions to help keep everything in order.

**STANDARD HANDS-FREE POWER LIFTGATE** With the keyless entry fob in your pocket, simply kicking your foot beneath the sensor provides access to the cargo area. Yet one more example of how thoughtful design makes Envision agile and adaptable.

**FLEXIBLE CARGO SPACE** The 60/40 split fold-flat rear seats make for a variety of cargo and passenger configurations. Even folding the second row flat is made more convenient with release handles on both sides of the cargo area.





## AN SUV THAT FEELS LIKE A PERFORMANCE SEDAN

With two top-notch engine options, Envision gives you the power to make the most of any outing. The standard 2.5L engine is designed to impress with 197 horsepower.

Take to the road with the spirited response of Envision's available 252-horsepower 2.0L Turbo engine, paired with an intelligent All-Wheel-Drive system with active twin clutch. It makes Envision's performance even more precise by automatically adjusting torque to each wheel to optimize traction and respond before slip occurs.

To further enhance handling with the 2.0L Turbo engine, the available HiPer Strut front suspension provides responsive steering. In short, a vehicle that comfortably seats five can make you feel like you're driving a performance sedan.





## NEVER COMPLICATED, ALWAYS SMART

**SURROUND VISION** This available system provides you with an overhead virtual “bird’s-eye” view of the scene around your vehicle on the infotainment screen to help you park and avoid collisions with nearby objects during low-speed maneuvering.

**ADAPTIVE CRUISE CONTROL—ADVANCED** This available system enhances regular cruise control by using sensors including radar technology to automatically adapt the vehicle speed to maintain your selected following gap time between your vehicle and any vehicles detected ahead while you steer, reducing the need for you to frequently brake and accelerate.

**REAR CROSS TRAFFIC ALERT** When in Reverse, available Rear Cross Traffic Alert can alert you to detected left or right cross traffic behind you. The available Safety Alert Seat provides you with the option of getting seat cushion pulses instead of beeps for crash-avoidance alerts.

Safety or driver-assistance features are no substitute for the driver’s responsibility to operate the vehicle in a safe manner. The driver should remain attentive to traffic, surroundings and road conditions at all times. Visibility, weather and road conditions may affect feature performance. Read the vehicle Owner’s Manual for more important feature limitations and information.

## A PRIORITY OF SAFETY

**PERCEIVE** To help make you more aware of your surroundings, Envision empowers you with available technologies that help raise your awareness of the road around you.

**PREVENT** When certain hazards are detected, available features on your Buick Envision can trigger alerts to let you know. Some features offered can even automatically apply emergency braking or gently nudge the steering wheel to help you avoid crashes or reduce their severity in some situations.

**PROTECT** In the event of a crash, strong structural dynamics, intelligent airbag systems<sup>1</sup> and other advanced safety systems work in concert to help protect you and your passengers.

### AVAILABLE DRIVER-ASSISTANCE AND SAFETY TECHNOLOGIES

Surround Vision • Safety Alert Seat • Lane Keep Assist with Lane Departure Warning • Lane Change Alert with Side Blind Zone Alert • Rear Cross Traffic Alert • Forward Collision Alert • Enhanced Automatic Emergency Braking • Teen Driver • Adaptive Cruise Control–Advanced • Automatic Parking Assist • OnStar<sup>®2</sup>

For a detailed look at the active safety technologies available in the 2020 Envision, please visit [buick.com/envision/safety](https://buick.com/envision/safety).

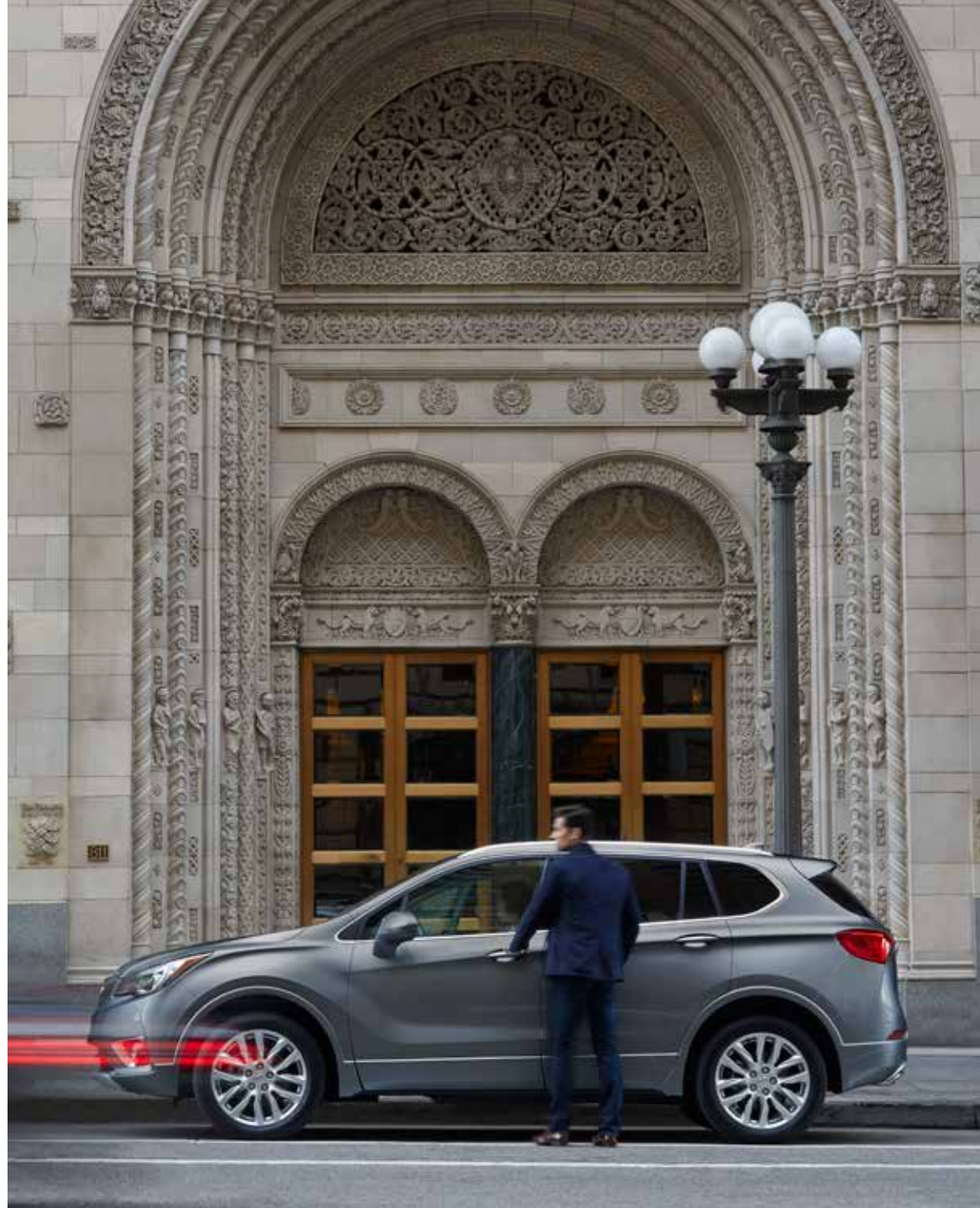
<sup>1</sup>A NOTE ON CHILD SAFETY: Always use seat belts and the correct child restraint for your child's age and size, even with airbags. Even in vehicles equipped with the Passenger Sensing System, children are safer when properly secured in a rear seat in the appropriate infant, child or booster seat. Never place a rear-facing infant restraint in the front seat of any vehicle equipped with an active frontal airbag. See your vehicle Owner's Manual and child safety seat instructions for more safety information. <sup>2</sup>OnStar plan, working electrical system, cell reception and GPS signal required. OnStar links to emergency services. See [onstar.com](https://onstar.com) for details and limitations.



Safety or driver-assistance features are no substitute for the driver's responsibility to operate the vehicle in a safe manner. The driver should remain attentive to traffic, surroundings and road conditions at all times. Visibility, weather and road conditions may affect feature performance. Read the vehicle Owner's Manual for more important feature limitations and information.

[buick.com/envision/safety](https://buick.com/envision/safety)

## GIVING CONNECTIVITY A STARRING ROLE



**BUICK CONNECTED SERVICES** Your new Buick comes with a host of in-vehicle benefits. Connected Access<sup>1</sup> offers the latest technology to help you improve every drive—and you get standard connectivity for 10 years, giving you access to features like monthly diagnostic emails and the ability to order and pay for coffee and purchase fuel through your vehicle's in-dash infotainment system. You can also take your ownership experience to new levels by upgrading to other Buick connectivity services.

**myBUICK MOBILE APP<sup>2</sup>** When you download the available myBuick mobile app, you can have access to features like scheduling service, getting tips to improve your driving, instant offers from select nearby merchants and other ways to simplify your ownership experience. When you upgrade to Remote Access,<sup>2</sup> remotely start and stop your vehicle, check fuel levels and even set and share notifications for vehicle arrivals and departures.<sup>3</sup>

**BUILT-IN WI-FI<sup>4</sup> HOTSPOT<sup>4</sup>** A built-in Wi-Fi<sup>4</sup> Hotspot with available 4G LTE data supports up to seven devices from up to 50 feet away from the vehicle. So your passengers can use

their favorite apps to stream movies, watch TV, play games, listen to music and check social media on the go.

**APPLE CARPLAY<sup>5</sup> COMPATIBILITY<sup>5</sup>** Just plug in your compatible iPhone<sup>®</sup> and you'll have easy access to your contacts, maps and some of the apps that you're familiar with on your vehicle's 8" diagonal color touch-screen. You can also have Siri<sup>®</sup> send and read your text messages, and you can listen to all of your content from iTunes,<sup>®</sup> Apple Music<sup>™</sup> and other compatible audio apps.

**ANDROID AUTO<sup>6</sup> COMPATIBILITY<sup>6</sup>** Android Auto makes it easy to use the touch-screen display in your Envision to access your phone, texts and music. And with Google Maps,<sup>™</sup> you can get voice-guided navigation, live traffic information, lane guidance and more while keeping your hands on the wheel and your eyes on the road.

**WIRELESS CHARGING<sup>7</sup>** Cut the cord with the help of available wireless smartphone charging. Just place your compatible device in front of the center console and charge with ease.

<sup>1</sup>Standard connectivity available only to original purchaser for 10 years. See onstar.com for details and further plan limitations. Does not include safety services. Connected Access services are subject to change. <sup>2</sup>Requires compatible Apple<sup>®</sup> or Android<sup>™</sup> device and data connection. Remote services require paid plan and do not include emergency or security services. Remote start requires GM factory-installed and enabled remote-start system. <sup>3</sup>Requires select paid plan and compatible smartphone. Locates compatible connected vehicles. Text and data rates apply. Requires contact method on file and enrollment to receive alerts. <sup>4</sup>Service varies with conditions and location. Requires active service plan and paid AT&T<sup>®</sup> data plan. See onstar.com for details and limitations. Vehicle must be on or in accessory position for Wi-Fi<sup>®</sup> to function. <sup>5</sup>Vehicle user interface is a product of Apple<sup>®</sup> and its terms and privacy statements apply. Requires compatible iPhone<sup>®</sup> and data plan rates apply. Apple CarPlay is a trademark of Apple, Inc. Siri, iPhone and iTunes are trademarks of Apple, Inc., registered in the U.S. and other countries. <sup>6</sup>Vehicle user interface is a product of Google<sup>™</sup> and its terms and privacy statements apply. Requires the Android Auto app on Google Play and an Android-compatible smartphone running Android 5.0 Lollipop or higher. Data plan rates apply. Android Auto is a trademark of Google LLC. <sup>7</sup>The system wirelessly charges one PMA- or Qi-compatible mobile device. Some phones have built-in wireless charging technology and others require a special adapter/back cover. To check for phone or other device compatibility, see my.buick.com/learn or consult your carrier.



## ONSTAR SAFETY AND SECURITY

**DESIGNED FOR ADDED PEACE OF MIND** As you travel with the ones you care about most, OnStar is available to help empower every moment. With the OnStar Safety & Security Plan,<sup>1</sup> you can have a 24/7 lifeline to specially trained Advisors ready to help if you've been in a crash, your vehicle's been stolen,<sup>2</sup> you're lost or you need Roadside Assistance<sup>3</sup>

**EMERGENCY HELP WHEN IT MATTERS MOST** If you are in a detected crash, available Automatic Crash Response<sup>4</sup> can use your vehicle's built-in sensors to alert an Emergency-Certified Advisor<sup>5</sup> who can send for help, even if you can't ask for it. Using Injury Severity Prediction technology, these specially trained Advisors can provide first responders with critical information, including the likelihood of serious injury. You can feel confident knowing OnStar Advisors are ready to help, 24/7.

**SECURITY YOU CAN TRUST** If your vehicle is stolen, OnStar Advisors can help with available Stolen Vehicle Assistance.<sup>2</sup> They can pinpoint your vehicle's location, prevent it from restarting and work with the police to help recover it. They can even slow it down if authorities deem conditions are appropriate. Plus, with Theft Alarm Notification,<sup>2</sup> you'll be alerted via text, email and/or a phone call if your vehicle alarm sounds.

<sup>1</sup>OnStar plan, working electrical system, cell reception and GPS signal required. OnStar links to emergency services. See [onstar.com](http://onstar.com) for details and limitations. <sup>2</sup>Requires armed GM factory-installed theft-deterrent system and enrollment to receive alerts. Additional texting and data rates apply. Doesn't prevent theft, damage or loss. <sup>3</sup>Roadside services provided by Allstate Roadside Services. <sup>4</sup>Not all vehicles may transmit all crash data. <sup>5</sup>OnStar Emergency Advisors are certified by the International Academies of Emergency Dispatch.



KEY FEATURES				
● STANDARD ○ AVAILABLE – NOT AVAILABLE	ENVISION (1SV) AND PREFERRED	ESSENCE	PREMIUM	PREMIUM II
HANDS-FREE POWER LIFTGATE	●	●	●	●
HEATED FRONT SEATS	●	●	●	●
REAR VISION CAMERA <sup>1</sup>	●	●	●	●
REAR PARK ASSIST <sup>1</sup>	●	●	●	●
APPLE CARPLAY™ COMPATIBILITY <sup>2</sup>	●	●	●	●
ANDROID AUTO™ COMPATIBILITY <sup>3</sup>	●	●	●	●
BUILT-IN WI-FI® HOTSPOT <sup>4</sup> (Includes data trial for 1 month or 3GB, whichever comes first)	●	●	●	●
PANORAMIC MOONROOF	○ <sup>5</sup>	○	○	○
HEATED STEERING WHEEL	—	●	●	●
PERFORATED, LEATHER-APPOINTED SEATS	—	●	●	●
HEATED REAR OUTBOARD SEATS	—	●	●	●
TRI-ZONE CLIMATE CONTROL	—	●	●	●
LANE CHANGE ALERT WITH SIDE BLIND ZONE ALERT <sup>1</sup>	—	●	●	●
REAR CROSS TRAFFIC ALERT <sup>1</sup>	—	●	●	●
BUICK INFOTAINMENT SYSTEM <sup>6</sup> WITH 8" DIAGONAL COLOR TOUCH-SCREEN AND NAVIGATION <sup>7</sup>	—	○	○	●
IN-VEHICLE AIR IONIZER	—	—	●	●
SAFETY ALERT SEAT <sup>1</sup>	—	—	●	●
LANE KEEP ASSIST WITH LANE DEPARTURE WARNING <sup>1</sup>	—	—	●	●
FORWARD COLLISION ALERT <sup>1</sup>	—	—	●	●
8" DIAGONAL MULTICOLOR DRIVER INFORMATION CENTER	—	—	●	●
BOSE® PREMIUM AUDIO 7-SPEAKER SYSTEM WITH AMPLIFIER	—	—	●	●
LED HEADLAMPS	—	—	●	●
INTELLIGENT ALL-WHEEL DRIVE WITH ACTIVE TWIN CLUTCH	—	—	●	●
ALL-WHEEL DRIVE	○ <sup>5</sup>	○	—	—
WIRELESS SMARTPHONE CHARGING <sup>8</sup>	—	—	—	●
COOLED FRONT SEATS	—	—	—	●
AUTOMATIC PARKING ASSIST (Includes Front and Rear Park Assist) <sup>1</sup>	—	—	—	●
HEAD-UP DISPLAY	—	—	—	●

PACKAGES	
Driver Confidence Package <sup>1</sup> (Available on Premium II)	Includes Adaptive Cruise Control–Advanced, Surround Vision and Enhanced Automatic Emergency Braking
Experience Buick Package (Available on Essence starting late 2019)	Includes 19" 10-spoke aluminum, bright machine-faced with Midnight Silver painted finish wheels; Buick Infotainment System <sup>6</sup> with 8" diagonal color touch-screen and Navigation; <sup>7</sup> and power panoramic moonroof

DIMENSIONS (INCHES)	CAPACITIES			
Wheelbase	108.3	Standard engine on Envision (1SV), Preferred and Essence	Standard engine on Premium and Premium II	
Overall length	183.7			
Body width	72.4			
Overall height	66.8			
Track width, front/rear	62.0/62.0			
Head room, front/rear	40.0/38.5			
Shoulder room, front/rear	57.0/55.8			
Hip room, front/rear	54.4/53.1			
Leg room, front/rear	40.9/37.5			
		Engine Type	2.5L DOHC SIDI with VVT	2.0L Turbo DOHC SIDI with VVT
		Horsepower	197 @ 6300 rpm	252 @ 5500 rpm
		Torque	192 lb-ft @ 4400 rpm	295 lb-ft @ 3000 rpm
		EPA-estimated mpg	22 city/29 hwy FWD 21 city/27 hwy AWD	20 city/25 hwy AWD
		Fuel Tank (approx.)	17.3 gallons	17.3 gallons
		Cargo Capacity <sup>9</sup>	With seats up: 26.9 cu. ft. Seats down: 57.3 cu. ft.	With seats up: 26.9 cu. ft. Seats down: 57.3 cu. ft.

<sup>1</sup>Read the vehicle Owner's Manual for important feature limitations and information. <sup>2</sup>Vehicle user interface is a product of Apple® and its terms and privacy statements apply. Requires compatible iPhone® and data plan rates apply. Apple CarPlay is a trademark of Apple, Inc. Siri, iPhone and iTunes are trademarks of Apple, Inc., registered in the U.S. and other countries. <sup>3</sup>Vehicle user interface is a product of Google™ and its terms and privacy statements apply. Requires the Android Auto app on Google Play and an Android™-compatible smartphone running Android 5.0 Lollipop or higher. Data plan rates apply. Android Auto is a trademark of Google LLC. <sup>4</sup>Service varies with conditions and location. Requires active service plan and paid AT&T® data plan. See onstar.com for details and limitations. <sup>5</sup>Available on Preferred model only. <sup>6</sup>Functionality varies by model. Full functionality requires compatible Bluetooth® and smartphone, and USB connectivity for some devices. <sup>7</sup>Map coverage available in the United States, Puerto Rico and Canada. <sup>8</sup>The system wirelessly charges one PMA- or Qi-compatible mobile device. Some phones have built-in wireless charging technology and others require a special adapter/back cover. To check for phone or other device compatibility, see my.buick.com/learn or consult your carrier. <sup>9</sup>Cargo and load capacity limited by weight and distribution.

## COLOR PALETTE

### EXTERIOR



Dark Moon Blue Metallic<sup>1</sup>



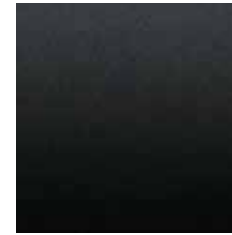
Chili Red Metallic<sup>1</sup>



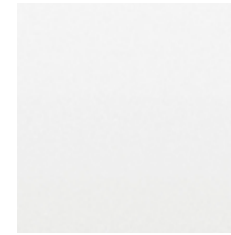
Espresso Metallic<sup>1</sup>



Satin Steel Metallic<sup>1</sup>



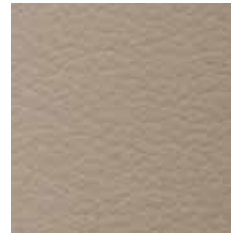
Ebony Twilight Metallic<sup>1</sup>



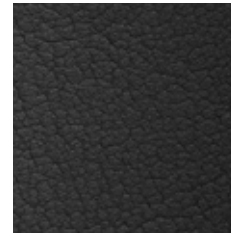
Summit White<sup>2</sup>

<sup>1</sup>Additional charge; premium paint. Color not available on Envision (1SV) trim level. <sup>2</sup>Not available on Preferred trim level.

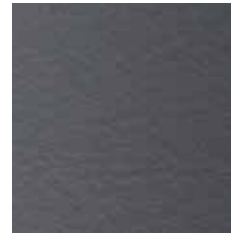
### INTERIOR

 Ebony accents included with all interior colors.

Light Neutral Cloth<sup>3</sup> or Perforated Leather-Appointed Seating<sup>4</sup>



Ebony Perforated Leather-Appointed Seating<sup>4</sup>



Dark Galvanized Perforated Leather-Appointed Seating<sup>4,5</sup>

<sup>3</sup>Standard on Envision (1SV) and Preferred trim levels.

<sup>4</sup>Not available on Envision (1SV) and Preferred trim levels.

<sup>5</sup>Not available with Chili Red Metallic or Espresso Metallic.

### WHEELS

**A** 19" 12-Spoke Aluminum With Manogian Silver Finish  
Standard on Premium and Premium II.

**B** 18" 10-Spoke Aluminum With Blade Silver Painted Finish  
Standard on Envision (1SV) and Preferred.

**C** 19" 10-Spoke Aluminum, Bright Machine-Faced With Midnight Silver Painted Finish  
Dealer-installed accessory, only available on AWD models.<sup>6</sup>

**D** 18" 10-Spoke Aluminum With Polished Finish  
Standard on Essence.

<sup>6</sup>Use only GM-approved tire and wheel combinations. See [buick.com/accessories](http://buick.com/accessories) for important tire and wheel information, or see your dealer.



## IMPORTANT WORDS

We have tried to make this catalog comprehensive and factual. We reserve the right, however, to make changes at any time, without notice, in prices, colors, materials, equipment, specifications, models and availability. Specifications, dimensions, measurements, ratings and other numbers in this catalog and other printed materials provided at the dealership or affixed to vehicles are approximations based on design and engineering drawings, prototypes and laboratory tests. Your vehicle may differ due to variations in manufacture and equipment. Since some information may have been updated since the time of printing, please check with your Buick dealer for complete details. Buick reserves the right to lengthen or shorten the model year for any product for any reason, or to start and end model years at different times. Certain vehicle features may lose their usefulness over time due to obsolescence from technological changes. Unless otherwise noted, all claims based on GM Compact SUV segment and latest available competitive information. Excludes other GM vehicles.

**3-YEAR/36,000-MILE BUMPER-TO-BUMPER LIMITED WARRANTY** Buick will warrant each 2020 Envision from bumper to bumper for 3 years/36,000 miles (whichever comes first; see dealer for details), with no deductible, from the original in-service date of the vehicle, for warrantable repairs that are required as a result of defects due to materials and/or workmanship. Cosmetic corrosion resulting from defects is also covered under the Bumper-to-Bumper Limited Warranty. In addition, rust-through corrosion will be covered for 6 years/100,000 miles (whichever comes first; see dealer for details).

**POWERTRAIN LIMITED WARRANTY** Every 2020 Buick Envision comes with a 5-year/60,000-mile (whichever comes first) transferable Powertrain Limited Warranty. 24/7 Roadside Assistance and Courtesy Transportation are also offered for the duration of the Powertrain Limited Warranty. Please see your Buick dealer for details.

**AN IMPORTANT NOTE ABOUT ALTERATIONS AND WARRANTIES** Installations or alterations to the original equipment vehicle (or chassis) as distributed by General Motors are not covered by the General Motors New Vehicle Limited Warranty. The special body company, assembler, equipment installer or upfitter is solely responsible for warranties on the body or equipment and any alterations (or any effect of the alterations) to any of the parts, components, systems or assemblies installed by GM. General Motors is not responsible for the safety or quality of design features, materials or workmanship of any alterations by such suppliers.

**ASSEMBLY** Buick vehicles and their components are assembled or produced by different operating units of General Motors, its subsidiaries or suppliers to GM worldwide. We sometimes find it necessary to produce Buick vehicles with different or differently sourced components than originally scheduled. Since some options may be unavailable when your vehicle is assembled, we suggest that you verify that your vehicle includes the equipment you ordered or, if there are changes, that they are acceptable to you.

**ENGINES** Buick products are equipped with engines produced by GM Powertrain or other suppliers to GM worldwide. The engines in Buick products may also be used in other GM makes and models.

**TRAILERING AND OFF-ROAD DRIVING INFORMATION** Please go to [buick.com](http://buick.com) and carefully review the vehicle Owner's Manual for important safety information about trailering or off-road driving in your vehicle.

**ONSTAR AND BUICK CONNECTED SERVICES** Connected vehicle services vary by vehicle model and require working electrical system, cell reception and GPS signal. Requires active service plan. OnStar links to emergency services. See [onstar.com](http://onstar.com) for details and limitations.

**A NOTE ON CHILD SAFETY** Always use seat belts and the correct child restraint for your child's age and size, even with airbags. Even in vehicles equipped with the Passenger Sensing System, children are safer when properly secured in a rear seat in the appropriate infant, child or booster seat. Never place a rear-facing infant restraint in the front seat of any vehicle equipped with an active frontal airbag. See your vehicle Owner's Manual and child safety seat instructions for more safety information.

**FLEET ORDERS** Some standard content may be deleted with fleet orders. See dealer for details.

**GMMOBILITY.COM (1-800-323-9935)** GM Mobility offers financial assistance for eligible adaptive equipment to make automotive travel easier for persons with disabilities or special transportation needs. To learn more about special GM Mobility offers, visit [gmmobility.com](http://gmmobility.com).

GM, the GM logo, Buick, the Buick emblem, OnStar, the OnStar emblem and the slogans, emblems, vehicle model names, vehicle body designs and other marks appearing in this catalog are the trademarks and/or service marks of General Motors, its subsidiaries, affiliates or licensors. The Facebook logo is a trademark of Facebook, Inc. The Twitter logo is a trademark of Twitter, Inc. Android, Android Auto, Google Play, YouTube and other marks are trademarks of Google LLC. Apple CarPlay, Siri, iPhone and iTunes are trademarks of Apple, Inc. The Instagram logo is a trademark of Instagram, Inc. ©2019 General Motors. All rights reserved.

To learn more about why Certified Service is the perfect companion for your Envision, visit [mycertifiedservice.com](http://mycertifiedservice.com).



