

Vanagon[®]

Vanagon[®] Camper



The Volkswagen innovators: Designers, engineers, and craftsmen producing unique vehicles for the '80s.



Space Efficiency.

Vanagon is roomy. Open the huge sliding side door and see for yourself. Vanagon provides plenty of room for a driver and up to eight additional passengers (seven- and nine-passenger models are offered). And that still leaves room behind the third benchseat, over the engine, to carry cargo along with a full complement of passengers.

Look closely at a Vanagon and you immediately become aware that this is one of the most advanced transportation vehicles of the 1980s. And that Vanagon can be far roomier and more functional than the full-size station wagons it is designed to replace.

Vanagon — ahead of its time, and available today.

Volkswagen does it again.



Fuel Efficiency.

Vanagon's proven, air-cooled, two-liter, flat, four-cylinder engine has an enviable heritage based on production of over five million units. It utilizes some of the most advanced space-age engineering.

Computer-assisted design adds strength without adding weight. Result: Vanagon and Vanagon Camper reflect an outstanding combination of fuel-efficiency*, performance, and strength.

Volkswagen does it again.



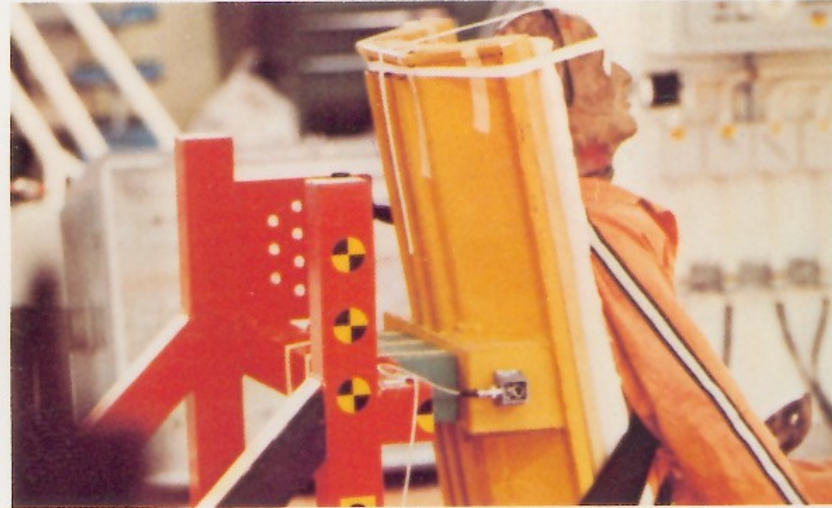
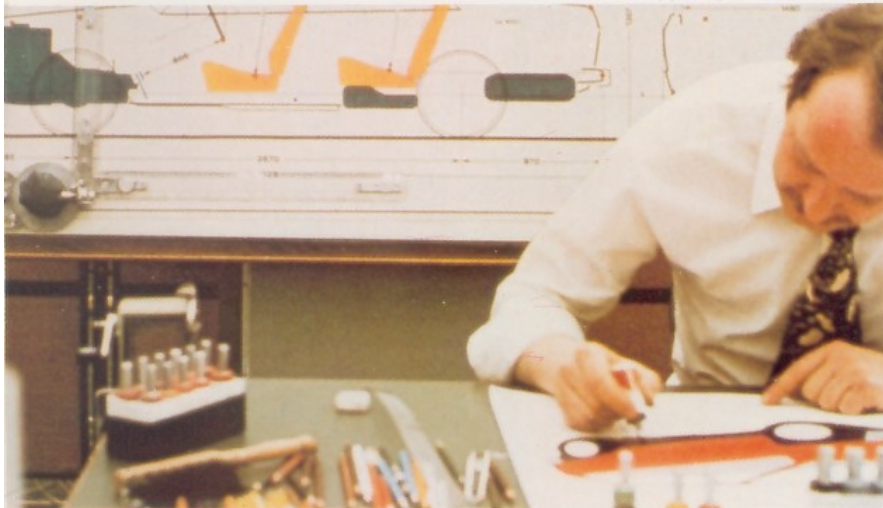
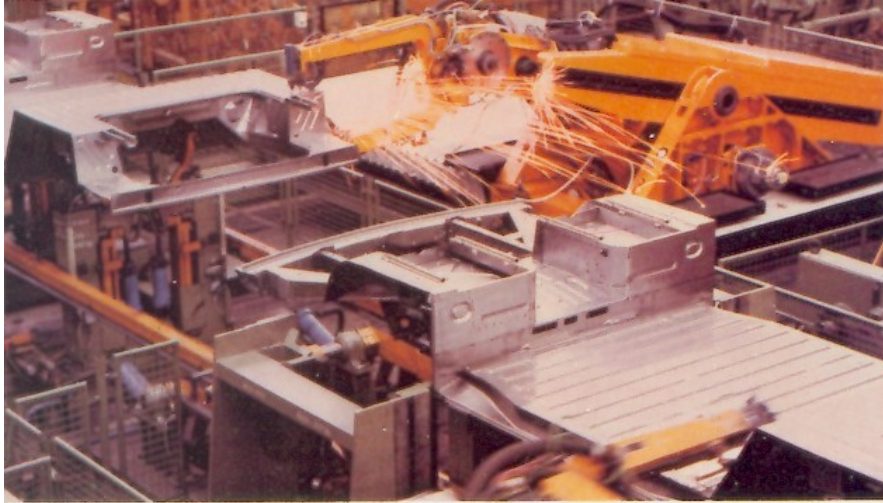
Passive Safety.

Volkswagen has long been a leader in developing passive safety technology to protect both the driver and passengers. From occupant restraints to impact-dissipating structures and interiors that help reduce injuries.

VW engineers devoted a great amount of time and effort to developing passive safety features for the all-new Vanagon. As they are "built into" the very design of the vehicle, ask a dealer salesperson to demonstrate these passive safety features to you. And you will sense them the moment you slip behind the wheel and take Vanagon for a test drive.

Volkswagen does it again.





Active Safety.

Vanagon's active safety features help make you a better, more "in control" driver. Vanagon offers exceptional visibility. And for driving comfort, there are adjustable front bucket seats.

Test drive Vanagon and see for yourself. The aerodynamic body and all-new independent suspension give you smooth ride and handling qualities.

Innovative design solutions are reflected in the way Vanagon feels on all kinds of roads and in the way it responds to your every command.

Is it any wonder so many former wagon and van owners are choosing Vanagon?

Volkswagen does it again.



Human Engineering.

Many car makers talk about human engineering. Few pursue it with the resources and dedication of Volkswagen.

Ergonomics — the design practice of making a vehicle fit you better — has been refined by VW to make it possible for tall people and short people to drive Vanagon in equal comfort.

Human engineering in Vanagon has been refined down to the smallest detail: The smooth movement of switches; the logical placement of instruments and warning lights; and the ease of clutch, brake, and gearshift operation.

Of all the areas discussed here, human engineering above all the rest is what makes Vanagon an outstanding choice for you and your family.

Volkswagen does it again.



Total Performance.

In your new Vanagon, total performance means many things. From outstanding efficiency of the fuel-injected engine, to exhilarating driving control delivered by Vanagon's fully independent coil spring suspension, and the solid, proven durability of Vanagon's direct transaxle drive.

High standards of product quality are reflected in Vanagon's luxurious finish and materials. Quality to deliver toughness and longevity.

In the final analysis, quality cannot be improvised, it must be designed in from the beginning. When you seek a vehicle capable of delivering the best of a van and the best of a wagon, test drive Vanagon. You'll experience something better than both!

Volkswagen does it again.





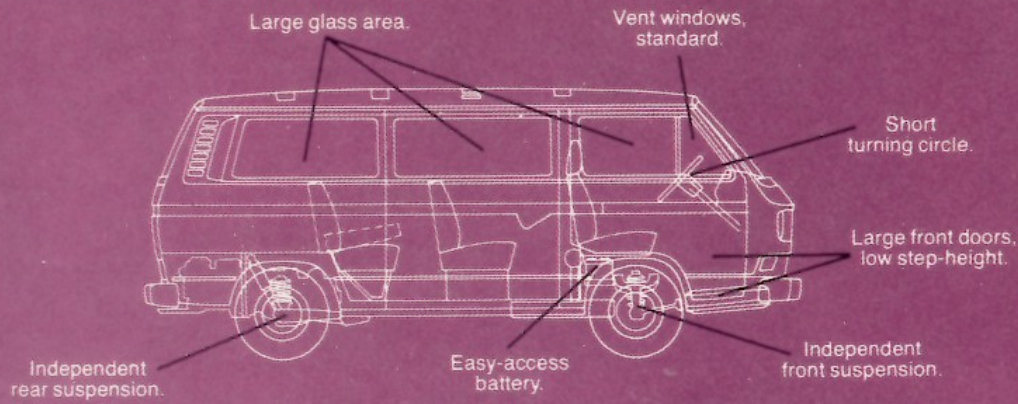
Vanagon® "L", Assuan Brown with Samos Beige top. One of six standard two-tone exteriors

Vanagon.®
The best of a van.
The best of a wagon.
And better than both.

Vanagon. The name is a combination of "van" and "station wagon."

Nobody else has anything quite like Vanagon. And when you see it and drive it, we think you'll agree: This is one vehicle that's right for its time. Crisp, taut, fresh lines. Large, low-step front doors for easy getting in and getting out. Wide, easy-opening sliding side door that's big enough to accommodate a large refrigerator. And in back, a huge lift door that gives you clear access to the rear cargo compartment.

When it comes to ride, Vanagon is way out in front of any van you've ever been in. The fully independent



A fresh look from stem to stern.



Vanagon® "L" interior, Topaz cloth. Ask your dealer about availability.

suspension smoothes your ride, whether fully loaded or completely empty. In the 7-seater, there's a wide aisle between the front bucket seats. So you can move quickly and easily to the middle or the rear.

When you need extra load space, simply remove some bolts and slide out the middle benchseat on its own special mounting track. And when you're back to carrying passengers instead of a load, the big seat slides back into place quickly and easily.

For extra comfort, there are foam seat cushions and a flow-through ventilation system with adjustable outlets in the ceiling. For added visibility, there's a total

of 6,179 square inches of windows. And to perfectly match you and your Vanagon, the driver seat is fully adjustable to fit both long-legged and short-legged drivers.

To make caring for your Vanagon easy, we've placed the battery inside, under the front passenger's seat*, where it's easily checked. And, while you're checking, check out the entire Vanagon and see for yourself why we say "The Best of a Van. The Best of a Wagon. And better than both."

*In Vanagon Camper, battery is under back seat.

Specifications, standard equipment and options subject to change without notice.



Vanagon® "L", Assuan Brown with Samos Beige. Large hatchdoor, low sill make loading easier.

Vanagon.[®] Perfect balance for sure-footed handling.

Vanagon is neither "nose heavy" nor "tail heavy." In fact, Vanagon is almost perfectly balanced. To achieve a 50/50 weight distribution at half payload, Volkswagen designers placed the engine and trans-axle in the rear. Directly over the driving wheels to give Vanagon sure, solid traction on surfaces that can set front engine/rear drive vans spinning their wheels.

For high reliability, the engine is air-cooled. And for top performance and easy starting, it has an air-flow-measuring fuel injection system which is electronically controlled.

201 cubic feet of interior space,
with rear benches removed.

Flow-thru ventilation, adjustable
front & rear outlets.

Adjustable foam-cushion
bucket seats in front.

Large hatch door.

Aerodynamic design.

Fuel-injected air-cooled engine.

Removable center bench seat.

Spare tire ahead of front wheels.



Easy engine access through large rear hatch.



Center seat in Van Dyck cloth. Seat is easily removed when you need extra cargo room, and re-installed in minutes.

Speaking of reliability, Volkswagen has built over five million van-type vehicles. In fact, we pioneered the whole van concept over 30 years ago. Out of all this experience comes Vanagon. Quiet, sure-footed, and sleek.

Take a Vanagon for a test drive and feel how confidently it handles hills, curves, ruts, bumps, and ramps. Savor the superb visibility — in front, in back, and to both sides. Revel in the remarkable ride — all four wheels are independently suspended for road-hugging comfort. As you settle into the seat, notice how

easily it adjusts to fit you precisely — that's human engineering, Volkswagen style. As you drive, listen. Vanagon is quiet.

After your test drive, check out the ease of Vanagon maintenance procedures. How quick and simple it is to check the battery and the engine oil. And forget about anti-freeze — it's free as the breeze!

Ask your VW dealer to point out all of Vanagon's new features, and let a demonstration drive convince you. Volkswagen does it again.



Vanagon® Camper, Ivory. Seating fabric is Van Dyck and Gazelle cloth.

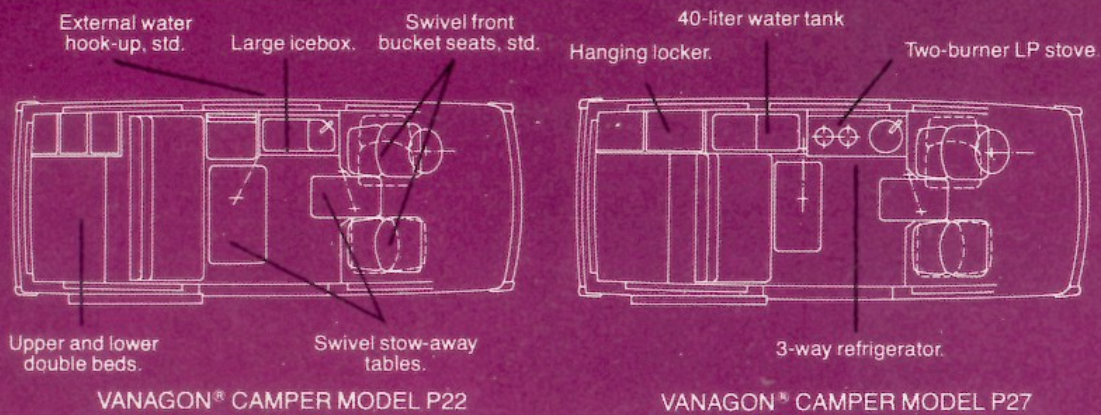
Vanagon® Camper. Wherever you go, you're always at home.

Today, most recreation vehicles are too heavy for contemporary travel styles and high gasoline prices. Vanagon, on the other hand, is an ideal traveling companion.

Our campers carry on a long tradition of craftsmanship and flawless interior design. There's room to seat four comfortably.

All Vanagon Campers provide double beds — one above and one below. And there's storage virtually everywhere. No nook is wasted.

For meals or an evening's relaxation, the front bucket seats swivel — the driver's 90° to the right, and the passenger's 180° to the rear. Two swivel tables can be set up in seconds, and for convenience, neither has legs to get in the way.



Vanagon Camper, Assuan Brown



Deluxe (P27) interior, has 2-burner stove and 3-way refrigerator. Seating is Gazelle and Van Dyck cloth.

What's the difference between our two camper models? Mostly it's cooking the meals and storing them. The more luxurious P27 comes with a 3-way refrigerator and a 2-burner propane stove; P22 has a large, economical icebox.

Of course, the big difference between Vanagon Campers and others is our pop-top. You get plenty of headroom above the food preparation area and at the access to the upper double bed.

Ask your Volkswagen dealer for the EPA Mileage Guide, and compare Vanagon fuel economy with similar vehicles.

Before you head for the great outdoors, take a close look at Vanagon Camper. You may find you're ready to take along a very commodious companion.



Three-level rear closet.

Specifications, standard equipment and options subject to change without notice.



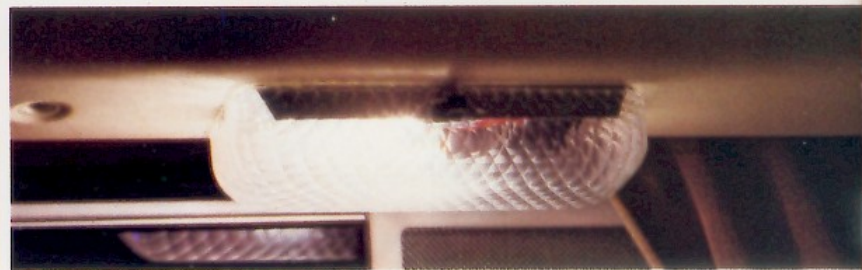
Additional storage in roof rack over cab.



Bedding stores below rear seat.



Swivel seats and swivel table, both standard.



12V light over sink, standard.



Large rear swivel table. Salad is served!



Roof storage and wardrobe with large mirror are standard.

**VW Vanagon® Camper –
convenient storage...
running water...
hot and cold meals...
two roomy double beds.**

Neat, convenient, enjoyable.
Clothing, bedding, and personal items stow neatly and out of the way in the abundant storage space provided in Vanagon Campers. Everything is easy to reach whenever you need it. Swing-away swivel tables have no legs or pedestals to get in your way. Ask for a demonstration.



Model P27 has a 3-way refrigerator and a 2-burner cookstove.



Lower double bed. Add your own bedding.



Upper double bed. Enough headroom here.



Kitchen drawer and pantry hold a lot.



Fire extinguisher is standard on Model P27.



Automatic transmission, optional on all models.

Eating and sleeping are "on-the-house", when you take your Vanagon® Camper along.

These days, motels and restaurants represent a steeply rising cost that can put a crimp in anyone's travel plans. And many times, you can waste precious hours looking for a place that suits you. Vanagon saves you time and money and solves your problem luxuriously and comfortably. Model P27's 3-way refrigerator and 2-burner stove let you enjoy a quick bite or a full-course banquet anywhere and anytime you please. And at bedtime, just make up the upper and/or lower double beds and settle down for a good night's rest. Traveling Vanagon Camper style is more than a money saver—it's downright fun!

Specifications, standard equipment and options subject to change without notice.



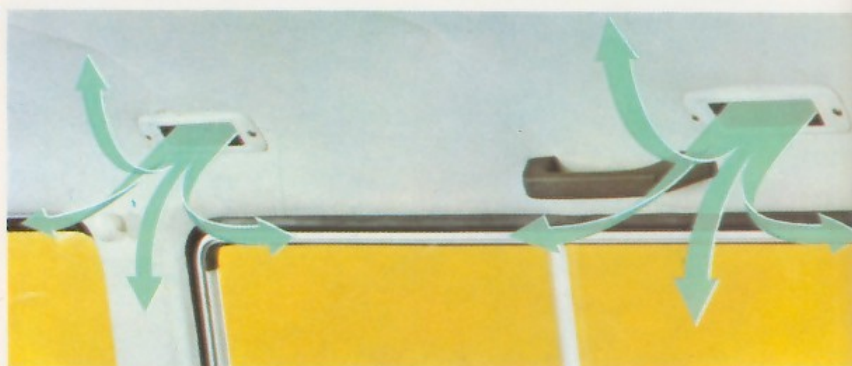
Carton measures 45"W, 34"H, 25"D, fits easily behind third seat.



Electric rear window defroster is standard.



Up-front, under-floor spare tire storage—more room inside.



New adjustable ceiling vent louvers on left and right sides.*



Easy battery access under passenger seat.



Oil filler neck slides up for easy access.

Everything about Vanagon® is convenient.

Even with the engine in the rear, there's plenty of room for big, bulky items. And because the engine is in the rear, you enjoy lots more footroom in front. Everywhere you look, Vanagon is convenient!

Volkswagen Vanagon.® One of the most advanced family transportation vehicles of the 1980s.

The Vanagon is roomier and more functional than a full-size station wagon. Fuel-injected power, four-wheel independent suspension, roomy and versatile interior — plus the most desirable characteristics of both a wagon and a van. That's what makes Vanagon fun to drive and fun to own.

Volkswagen does it again.

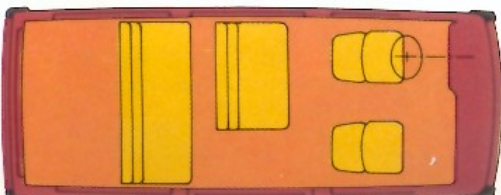
* Not available on Vanagon Camper or Kombi.

Vanagon/Vanagon® Camper Standard Features:

VANAGON® (7- AND 9-SEATER)

- New 2.0-liter air-cooled engine with AFC fuel-injection.
- 4-speed synchronized transmission (automatic transmission, optional on all models)
- 4-wheel, independent coil-spring suspension (new double-wishbone, front; semi-trailing arms, rear)
- Radial ply tires, 185 R 14 (set of 5)
- Spare tire stowed outside (under the vehicle, forward of front wheels)
- Dual circuit, power-assisted brakes
- Disc brakes, front; drums, rear
- Inertia-controlled brake pressure regulator, rear
- Sliding side door, rear hatch door
- Electric rear window defroster
- Heater and defroster
- Flow-thru ventilation¹, with adjustable outlets, front/rear, at ceiling level
- Back-up lights
- Bright window molding, all around¹
- Left and right outside rearview mirrors, black
- Chrome hubcaps
- Operating vent windows in front doors
- Sliding vent windows in sliding side door and opposite sliding door
- Single tone color, Vanagon and Campers
- Two-tone interior, Vanagon "L"
- 7-seater (2 adjustable front bucket seats with headrests, 2-seater center bench, 3-seater rear bench)
- 9-seater has 2-seater front bench plus driver's bucket seat
- New padding for all seats, standard
- Interior trim available: 3 colors¹ in leatherette (black, brown, beige) 2 colors¹ in cloth (brown, beige)
- Instrument cluster with speedometer, resettable trip odometer², fuel gauge, quartz chronometer², control and warning lights, dimmer switch for instruments
- Inside courtesy light with door contact-switch on all doors
- 2-speed windshield wiper
- Intermittent wipe cycle²
- Electric windshield washer system
- Cigarette lighter/12V appliance outlet
- 3 ashtrays (1 in dash, 2 in rear)
- Inside, day/nite rearview mirror
- Swivel sun visors, left and right
- Make-up mirror in right visor
- Backrest of rear seat-bench folds down to expand cargo space (Vanagon only)
- Floor covering in rubber, black¹
- Luggage compartment, carpeted
- Armrest and door handles on front doors
- Door and side trim panels, vinyl (3 color¹ choices)
- 5 assist handles (1 in front, 4 in rear)
- Headliner fully padded
- 3-point inertia seat-belt system, front; lap belts (5) for rear passengers (2 rear, P27; 3 rear, P22)
- Carpeting throughout³
- Lockable glove compartment²
- Foam-padded steering wheel
- Door pocket on front door, left²
- Chrome bumpers, front and rear, with impact strips³

**Vanagon 7-seat model.
Middle seat is rail-mounted
and easily removed
for more cargo room.**



VANAGON® CAMPER

(Unless noted, equipment installed on both P22 and P27 models)

- Pop-up roof with double bed, upper level
- 3-passenger seatbench folds down, converting to a bed (lower level) (P22)
- 2-passenger seatbench folds down, converting to a bed (lower level) (P27)
- Camping seat, left side, faces sliding door with 40-liter (14.5 gallons) water tank below (P22)
- Storage space with 13.2 U.S. gallon water tank below (P27)
- Rear cushion over engine compartment
- Clothes closet, rear left
- Roof cabinet
- Table, swivel-type, rear compartment
- Table, store-away, swivel-type, front (between bucket seats)
- Kitchen cabinet, sink, electric water pump, cabinet cover
- Icebox, 1.0 cu. ft. capacity (P22)
- Refrigerator, 1.5 cu. ft. with thermostat control, 3-way cooling operates on 12V, 110V AC or LP gas (P27)
- Two-burner propane stove, 5.5 kg (12.1 lbs.) refillable propane tank (P27)
- External water hookup
- 110V AC duplex power outlet w/ master switch, circuit breaker and exterior electrical connection
- 12-volt ceiling lamp
- Roof luggage carrier with tie-down hooks
- Dry chemical fire extinguisher (P27)
- Driver and front passenger seat, swivel type (driver, 90° to right; passenger, 180° to rear)

¹Vanagon only

²Vanagon "L" Package and Camper P27 only

³Vanagon "L" Package and Campers only

VANAGON® OPTIONAL EQUIPMENT

- "L" equipment package, for 7- and 9-seater
- Auxiliary heater
- Head restraints, rear (N.A. Campers)
- Tinted glass, all around
- Air conditioning
- Cloth interior*
- Automatic transmission

*Cloth offered only with Vanagon "L" package and Camper

Specifications, standard equipment and options subject to change without notice.

Vanagon is available in a seven- or nine-seat configuration, with an optional "L" equipment package. Vanagon Camper models are offered in two versions, Model P22 and the more completely equipped Model P27. Listed here are the significant differences. Ask your VW dealer for more detailed information and an actual Vanagon/Vanagon Camper test drive.

**Vanagon 9-seat model.
With adjustable
driver bucket seat.**



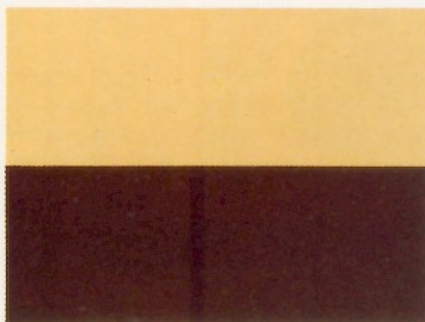
Vanagon® Color and Trim:

Vanagon models are offered in six exterior color schemes. Vanagon interiors are offered in a number of leatherette colors. The Vanagon "L" Package and Camper offer cloth upholstery.

Exterior Colors



Ivory over Bright Orange



Ivory over Agate Brown



Guinea Blue over Cornat Blue

Interior Colors



Van Dyck leatherette

Available with Bright Orange/Ivory, Assuan Brown/Samos Beige, Bamboo Yellow/Ivory, Agate Brown/Ivory, Ivory/Ivory, Cornat Blue/Guinea Blue.



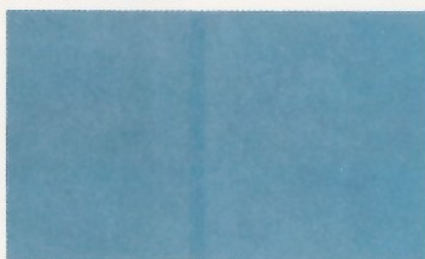
Van Dyck cloth*

*With "L" Package only

Vanagon® Camper Color and Trim:

Campers all have brown dashboards. Ask your dealer to show you actual color and fabric samples.

Exterior Colors



Medium Blue



Ivory

Vanagon/Vanagon® Camper Specifications:

ENGINE

Number of cylinders	4
Bore x stroke	Inches—3.70" x 2.80" Metric—94mm x 71mm
Displacements (inches/metric) ..	120.0 cu. in./2.0 liters
Compression ratio	7.3:1
Horsepower, SAE net	67 hp @ 4200 rpm
Maximum torque, SAE net	101 ft. lbs. @ 3000 rpm

ENGINE DESIGN

Engine type	4-cylinder, opposed; rear mount
Cylinder head	Aluminum alloy
Valve train	Pushrods, operated overhead valves, hydraulic lifters
Cooling medium, drive	Air-cooled, crankshaft-mounted blower
Fuel/Air supply	Electronic fuel-injection, Air Flow Control (AFC), catalyst
Cylinder firing order	1-4-3-2
Fuel requirement	Lead-free only (all states)

CAPACITIES

Fuel	15.9 U.S. gallons/60 liters
Engine oil	3.7 U.S. quarts/3.5 liters

Specifications, standard equipment and options subject to change without notice.

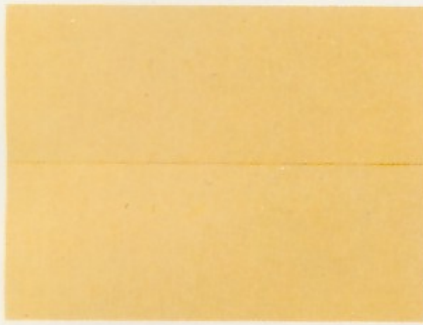
ELECTRICAL SYSTEM

Rated voltage	12V
Alternator output	14V/65 Amp (770 Watt, max.)
Battery	12V/54 Amp/hr
Ignition	Battery coil, distributor

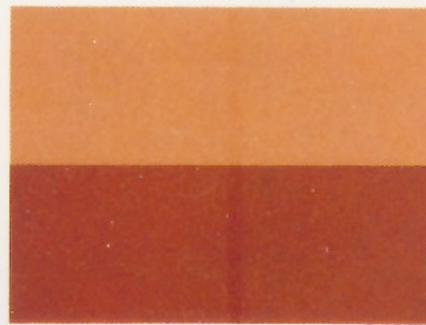
DRIVE TRAIN

Clutch	Single-disc, dry (diaphragm type)
Transmission, manual	4-speed, fully-synchronized, floor-mounted shifter; rear-mounted transaxle 1st: 3.78:1 2nd: 2.06:1 3rd: 1.26:1 4th: 0.88:1 Reverse: 3.28:1
Transmission, automatic	3-speed, rear-mounted transaxle 1st: 2.55:1 2nd: 1.45:1 3rd: 1.00:1 Reverse: 2.46:1
Final drive	Rear-wheel driven, double jointed axles. Manual: 4.57:1; Automatic: 4.09:1

The colors shown here are as accurate as modern high-speed printing permits. We suggest you ask your Volkswagen dealer to show you actual Vanagon and Vanagon Camper models, as well as actual paint and fabric samples.



Ivory over Ivory



Samos Beige over Assuan Brown



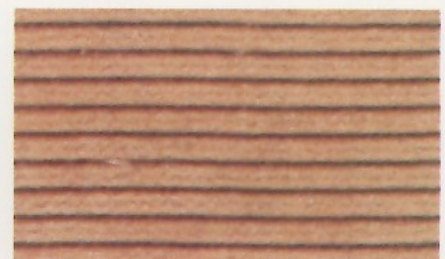
Ivory over Bamboo Yellow



Black leatherette
Available with Bright Orange/Ivory, Cornat Blue/Guinea Blue, Bamboo Yellow/Ivory, Ivory/Ivory.



Gazelle leatherette
Available with Bright Orange/Ivory, Bamboo Yellow/Ivory, Agate Brown/Ivory, Ivory/Ivory.



Topaz cloth*
Available with Bright Orange/Ivory, Bamboo Yellow/Ivory, Agate Brown/Ivory, Ivory/Ivory.

Interior Colors



Assuan Brown



Van Dyck cloth
Available with Ivory exterior.



Gazelle cloth
Available with Medium Blue and Assuan Brown exteriors.

CHASSIS AND SUSPENSION

Chassis.....	Unitized construction with box-shaped side and cross members
Front suspension.....	Independent with upper and lower control arms, coil springs, telescopic shock absorbers
Rear suspension.....	Independent, with semi-trailing arms, integrated axle supports, coil springs, telescopic shock absorbers

BRAKES AND WHEELS

Service brake.....	Dual hydraulic, power-assisted, inertia controlled brake-pressure regulator (rear). Self-adjusting disc/drum brakes, 9" brake booster
Parking brake.....	Mechanical, acting on rear drums
Steering.....	Rack and pinion, with offset gear box
Rim size.....	5J x 14
Tire size.....	185 R 14, radial-ply steel belted

DIMENSIONS

Length.....	179.9"/4570mm
Width.....	72.6"/1845mm
Height (unloaded).....	77.2"/1960mm
Wheelbase.....	96.9"/2460mm
Front track.....	61.8"/1570mm
Rear track.....	61.8"/1570mm
Turning circle, curb to curb.....	34.5'/10.5m
Curb weight (preliminary).....	3087 lbs./1400Kg

PERFORMANCE

Top speed.....	75 mph
Hill-climbing capability.....	1st gear: 29.1% grade
(with maximum payload)	2nd gear: 15.2% grade
	3rd gear: 8.7% grade
	4th gear: 5.6% grade
	Automatic transmission:
	27.0% grade
Fuel consumption*.....	17 estimated mpg,
	25 estimated highway mpg

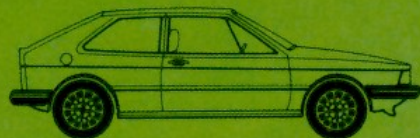
*1980 EPA estimates. Compare these estimates with the "estimated mpg" of other cars. Mileage varies with speed, weather, and trip length. Highway mpg will probably be less. 1981 figures not available at time of printing.

The Volkswagen Family of Originals.



Rabbit.

In an era when most manufacturers are cutting performance, it is refreshing to find an extra measure of performance in the Rabbit. Plus room, comfort, handling and quality that's every inch VW. And there's even a convertible! All with Volkswagen's advanced engineering.



Scirocco.

An unbeatable combination: Aerodynamic styling by Giugiaro; fuel-injected, overhead-cam performance; and front wheel drive handling. Scirocco gives you real 2+2 seating comfort, and luggage space to match your lifestyle. You'll like the exclusive look and the superb fit and finish of coachwork by Karmann.



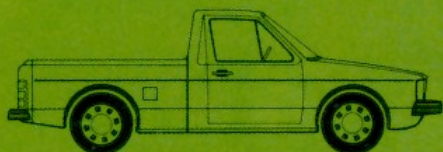
Dasher.

With this car, Volkswagen redefined the luxury car. Front wheel drive performance plus your choice of fuel-injected gasoline or Diesel powerplants. And, of course, all the amenities you expect from a luxury car. Enjoy the benefits of advanced engineering in a roomy Dasher sedan or station wagon.



Jetta.

The exciting luxury sport sedan with a trunk that is large enough for six good size suitcases. Fit and finish in the tradition of fine European sedans, plus the advanced engineering that has become a VW trademark.



VW Pickup Truck.

An exciting sports pickup truck. Front wheel drive for easier handling, and a fuel-injected gasoline or Diesel powerplant for great performance. Fun to drive and handsomely styled. It looks like a truck—but it drives like something else!



Vanagon/Vanagon® Camper.

Another exciting Volkswagen original. With great looks and advanced engineering from the ground up. It combines the best of a van with the best of a wagon. The Vanagon Camper carries on a long tradition of careful craftsmanship and flawless design.

VOLKSWAGEN DOES IT AGAIN



Volkswagen of America, Inc. believed the specifications in this brochure to be correct at time of printing. However, specifications, standard equipment, and options are subject to change without notice.