



The Lupo

2003 Model Year



C o n c e n t r a t e d

Volkswagen.



4	Philosophy
6	Interior Design
8	Security
12	Engines
16	Quality
20	The Lupo E
24	The Lupo S
28	The Lupo Sport
32	The Lupo GTI
36	Optional Equipment
42	Accessories
48	Colours and Upholstery
56	Technical Specification
60	Standard Equipment
62	Volkswagen Service

The L u p o .

Today's driving environment has radically changed, so when choosing your new car, you want one that's versatile. Probably a compact design that's economical* and highly manoeuvrable – but not at the expense of quality and comfort. In short, you need a Lupo. Although small enough to

revel in city traffic and prey upon lesser sized parking spaces, its size is deceptive. Step inside and you'll discover a practical interior that will comfortably accommodate your daily needs.

* Please see pages 56 and 57 for fuel consumption figures.



Model shown is S with optional 14" 'Kyalami' alloy wheels.



The aluminium trimmed dials with red needles and blue illumination provide a sporty look.

The high quality materials used in the Lupo are exactly as you'd expect from Volkswagen. We ensure that every car is proud to be part of the Volkswagen family. Therefore, you'll find the same high standard of workmanship and attention to detail that distinguishes our larger executive cars. Evidence

of quality is all around. From the fitment of power-assisted steering to all models to the sporty fascia dials trimmed with aluminium and the stylish red needles and blue illumination. The interior has been ergonomically designed to improve your comfort, with every switch readily located. The steering wheel and driver's

Interior shown is Lupo E.

seat are adjustable for height. And to ensure smooth seat adjustments, you'll find the front seats mounted on rollers.

Due to the ingenious design of the Lupo, you'll find no shortage of headroom, an unusual feature for a car in the supermini class.



Both sun visors incorporate a vanity mirror.



The practical addition of a third sun visor.



Small car convenience
with large car *comfort*.
A reassuring thought.



Strengthened square and longitudinal rods ensure greater stability.

When designing a small car, safety is an important element. The chassis is extremely rigid and is equipped with crumple zones to absorb impact.

The Lupo is a fine example of strength through design. This is evident when driving the Lupo, as its torsional rigidity improves handling and roadholding.



For greater comfort and safety, the front seat belts are height-adjustable.



Rear head restraints provide added protection and a luxurious finish.



The proven safety of anti-lock brakes can be fitted as an optional extra.



Full sized airbags for driver and front passenger are standard.

The Lupo has set an enviable standard amongst the supermini class and, with such an extensive list of safety features, it's easy to see why.

Passive safety features help minimise injury during an accident and the Lupo is equipped with numerous examples. There are twin airbags and a strengthened chassis reinforced with torsional rods and crumple zones to absorb energy during an accident. Additional door-mounted side impact bars provide further resistance to prevent the door penetrating the inner cell following a collision.

The front seat belts can be adjusted to three height settings and are also fitted with pre-tensioners for greater restraint.

For the youngest members of your family, the Volkswagen developed Isofix child safety system provides added protection. By attaching the Isofix child seat to pre-installed fixings directly on the chassis, the seat remains firmly in place and there's no need for the lengthy process of threading seat belts.

As an optional extra you can choose anti-lock brakes (ABS) (standard on Sport 1.4 litre 100 bhp and GTI models). This sophisticated system prevents the wheels from locking during heavy or emergency braking, enabling the Lupo to remain steerable. In conjunction with ABS, Electronic Brake-pressure Distribution (EBD) constantly monitors the speed at which each wheel is slowing and redistributes the braking effort accordingly. The result is even shorter stopping distances.

Efficient engines designed with
e n v i r o n m e n t a l awareness.



Model shown is S with optional 14" 'Kyalami' alloy wheels.

Thanks to Volkswagen's advanced engineering, the engines available for the Lupo are particularly efficient, economical and smooth running.

There are four petrol engines – a 1.0 litre 50 bhp, a 1.4 litre 75 bhp, also available with an automatic transmission, a 1.4 litre 16V 100 bhp and the performance orientated 1.6 litre 16V that drives the Lupo GTI. This exceptional engine delivers 125 bhp and powers the Lupo GTI from 0 - 62 mph in just 8.3 seconds and on to a top speed of 127 mph, where the law permits.

Few small cars offer a diesel equipped with a turbocharger – but the Lupo does. Its 1.4 litre TDI PD 75 bhp engine delivers a superb blend of performance and economy. It can take you from 0 - 62 mph in just 12.3 seconds, but can still achieve 78.5 mpg on the Extra-urban cycle.*

You can also choose a 1.7 litre diesel, available for the E and S, which generates 60 bhp and is capable of 78.5 mpg on the Extra-urban cycle.*

The impressive 1.6 litre 16V 125 bhp engine powers the Lupo GTI.

** According to EU Directive 99/94. Please see pages 56 and 57 for fuel consumption figures.*

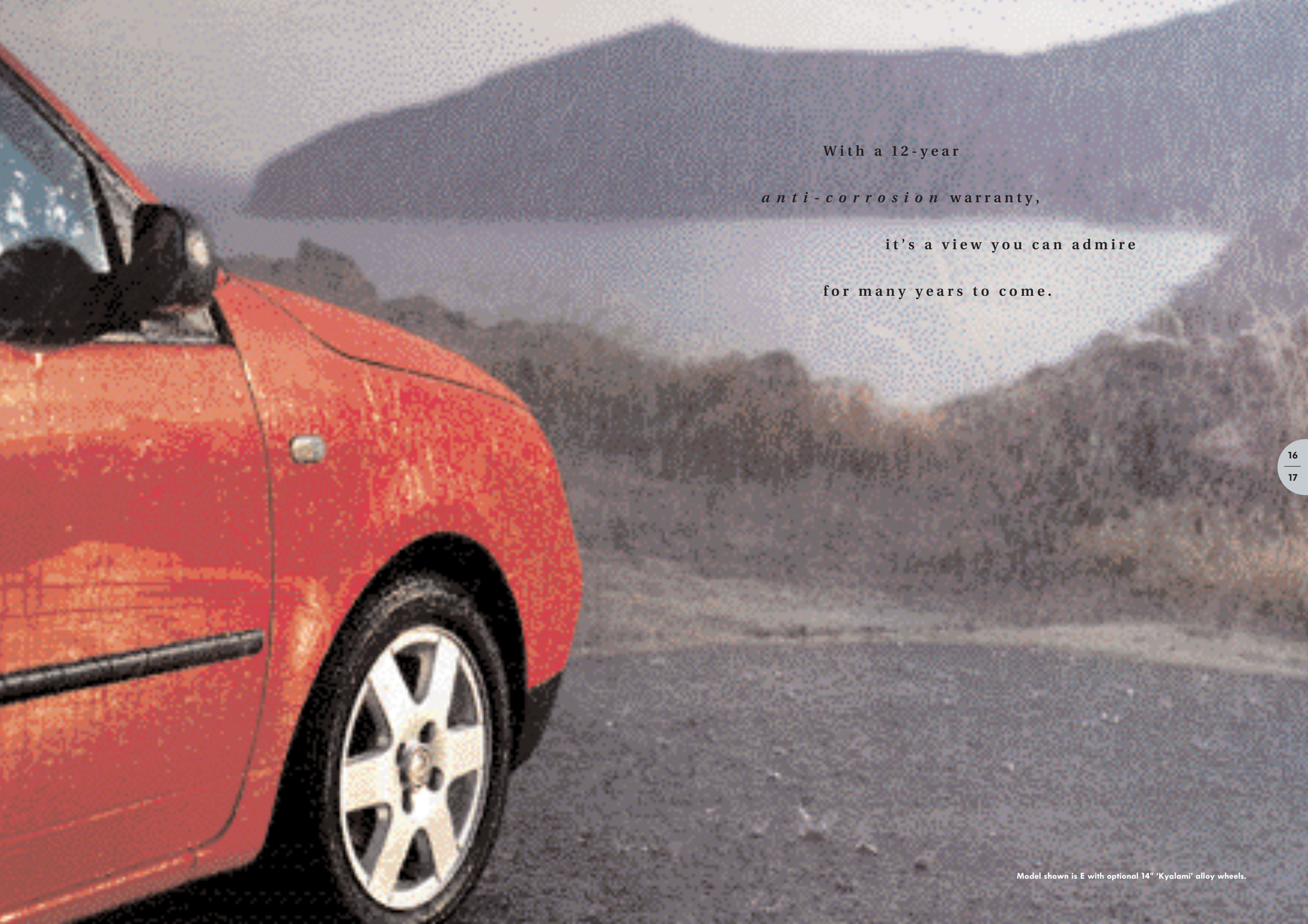


The sporty 1.4 litre 16V engine delivers an impressive 100 bhp.



The power of a turbo with the economy of a diesel: the 1.4 litre TDI 'Pumpe Düse'.





With a 12-year
a n t i - c o r r o s i o n warranty,
it's a view you can admire
for many years to come.

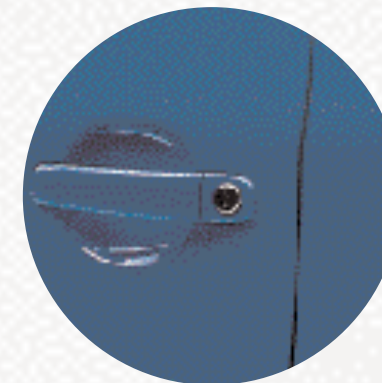
Model shown is E with optional 14" 'Kyalami' alloy wheels.



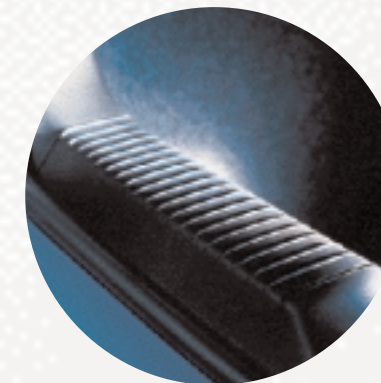
A 12-year anti-corrosion warranty guarantees longevity.



The added strength from laser welding techniques.



A precise panel fit is the mark of quality.



A protective lip prevents damage to the paintwork when using the boot.

A car is only as good as its individual components. That's why the Lupo is constructed with meticulous detail, using parts that have passed the most rigorous quality control procedures.

The ultimate testament of quality is a 12-year anti-corrosion warranty – thanks to zinc coating throughout the bodywork.

Such attention to detail is also evident in the body panels themselves. Built within precise tolerances, it allows adjoining panels to meet with the smallest of margins. The benefits are numerous; less wind resistance improves fuel consumption and greater body rigidity helps to improve roadholding.

Such body strength is also achieved through laser welding techniques. This not only improves stability in a crash scenario, but also ensures that joints are less likely to loosen over time.

With so many benefits, the Lupo

will always be the right *choice*.





The *L u p o* *E* .

The interior of the Lupo is inspirational. Not only do the fabrics portray the Lupo's cheerful character, it's also extremely comfortable.

The front seats, for example, are mounted on rollers, so adjustment is both smooth and effortless. The seats themselves are ergonomically contoured to provide exceptional support and include front and rear head restraints. So whether you're tackling a twisting road or a long drive, you'll appreciate the comfort and security they provide.

All models have power steering and you can adjust the driver's seat and steering wheel for height, to help achieve a comfortable driving position.

For a small car you'll find the rear seats perfect when you need to carry additional passengers. Or, perhaps, more luggage? With a two seater rear configuration that splits 50:50, you have the utmost adaptability.

The attractive 'Strike' design interior is available in Black or Flannel Grey to complement your choice of exterior colour.

You'll also find plenty of storage space for your travel essentials, such as the door storage nets or the lower dashboard shelf, whilst the practical cup holder is ideal for long journeys.



To achieve the most comfortable driving position, the steering wheel is height-adjustable.



As standard, the driver's seat is height-adjustable.

A touch of *exclusivity*.

The Lupo S.





The *L u p o* S.

If you're seeking small car convenience with larger car comforts, look no further than the Lupo S.

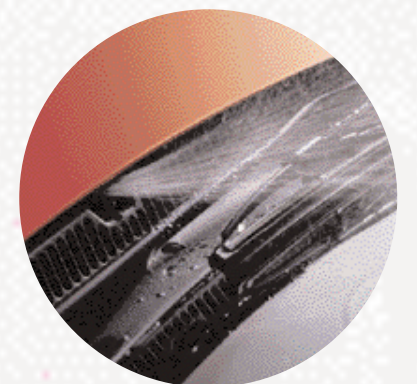
You only have to see the 'Plaza' trim to realise the Lupo S is an exception in its sector – one that exudes quality.

There's an extensive list of standard equipment including body-coloured door mirrors, side bump strips and door handles, central locking, electric front windows and 'easy entry' seats that allow quicker access to the rear seats.

And don't forget the features that are standard on every Lupo, like folding rear seats, a third central sun visor, vanity mirrors on both the driver and front passenger sun visors and a 'Beta' security coded radiol/cassette player ('Gamma' on GTI).



Manual opening rear windows are standard on the Lupo S.



Front fog lights and heated windscreen washer jets are available as an optional extra.

The *i n d i v i d u a l* character
of the Lupo Sport.



Model shown is Sport 1.4 litre 100 bhp.



The *L u p o S p o r t*.

Its combination of size, weight distribution and power makes the Lupo Sport extremely swift and agile. It also ensures it's great fun to drive.

To power the Lupo Sport you can choose either a petrol or diesel engine. The 1.4 litre 16 valve petrol engine develops 100 bhp and that's enough power to accelerate the Lupo Sport from 0 - 62 mph in just 10 seconds on its way to a top speed of 116 mph, where the law permits.

Alternatively, the 1.4 litre 75 bhp TDI PD combines the power of a turbo with the economy of a diesel and achieves 0 - 62 mph in 12.3 seconds, whilst achieving 64.2 mpg on the Combined cycle.*

As you'd expect with a Volkswagen, a number of safety features are built in, ABS brakes with EBD are fitted as standard on petrol versions (optional on Sport TDI PD). Externally, its sporty character is underlined with 'Kyalami' 14 inch alloy wheels with anti-theft wheel bolts and front fog lights complete with heated windscreen washer jets.

Stylish black interwoven velour upholstery has been used on the seats and the door trims which complements the individual appeal that characterises the Lupo Sport.

** According to EU Directive 99/94. Please see pages 56 and 57 for fuel consumption figures.*



Stylish 'Kyalami' 14" alloy wheels with 185/55 tyres are standard on the Sport.



A single chrome centre exhaust is exclusive to the Sport (not available on TDI PD).

Interior shown is Sport with optional single CD player.



Discover your *s p o r t y* side

with the Lupo GTI.



The L u p o G T I .

Since Volkswagen created a motoring revolution in 1976 with the launch of the first GTI, only a select few models have displayed these prestigious letters. Sharing performance, roadholding and a dynamic driving experience, every GTI has worn the badge with pride. The Lupo is no exception.

The secret of the Lupo GTI's performance capability is a combination of engine efficiency and a lightweight construction. Its 16 valve engine features variable valve timing on the inlet camshaft, leading to a flatter torque curve. It generates a torque of 152 Nm at just 3,000 rpm, providing good pulling power, even at low engine revolutions. Weight is a crucial factor and the Lupo GTI totals just 1015 kg. This is achieved by making the bonnet, doors and wheel arches from lightweight aluminium.

To match such performance, the Lupo GTI is equipped with disc brakes all round, ventilated at the front, and ABS with Electronic Brake-pressure Distribution.

With the Lupo GTI, performance is not at the expense of fuel efficiency. A top speed of 127 mph (where law permits) and 0 - 62 mph in 8.3 seconds are complemented by a Combined fuel consumption figure of over 38 mpg*.

Externally, the Lupo GTI possesses distinctive styling. Flared wheel arches, side skirts, a deep front sill, a spoiler bumper with integrated air inlets and mesh grille combine to provide great presence. Its aesthetic exterior is completed with 'Bathurst' 15 inch alloy wheels,

Xenon headlights, a rear roof spoiler, centrally mounted chrome twin exhaust tailpipe and a GTI badge. This stunning exterior can be finished in Black, Tornado Red, Metallic Reflex Silver or Raven Blue, and Pearl Effect Grey Anthracite.

The performance theme continues inside with front sports seats, leather rimmed three-spoke steering wheel, black headlining, black or red/black interwoven velour upholstery, aluminium foot pedals and a 'Gamma' radio/cassette player with 8 speakers.

* According to EU Directive 99/94. Please see pages 56 and 57 for fuel consumption figures.



The slick, 6 speed transmission is capped by a stylish aluminium gear knob.



The mesh front grille enhances the sporty appearance of the GTI.



Extensive *optional* equipment

– because we all have different needs.

'Kyalami' alloy wheels are optional at extra cost on E and S models and standard on the Sport.



ABS brakes are a proven success as they prevent the wheels from locking. Even on poor road surfaces, they enable the vehicle to remain steerable during heavy braking.

The added safety of ABS brakes is optional on E, S and Sport TDI PD and is standard on Sport and GTI.

In the unfortunate event of an accident involving a side impact of sufficient severity, the side airbag will inflate within milliseconds. Designed to protect the thorax region (upper body) and the pelvis from lateral bruising, only the airbag on the side of the impact will inflate.



Side airbags provide greater protection for the driver and front seat passenger.

The Open Air module is the cost-effective way of sampling the fun of a cabriolet. At the touch of a button the large fabric sunroof folds neatly back to unleash the thrill of an open top. To reduce internal wind noise, it comes with a fixed aerodynamic roof spoiler. Available on all models except GTI.



The large fabric sunroof folds neatly back at the touch of a button. Model shown is the Lupo E with optional 'Kyalami' alloy wheels.

The fully automatic operation of the electric sunroof allows you to open or close the sunroof to a desired setting in one swift action. It comes complete with silicone-damped grab handles and is available as an option on all models.



The electrically operated sunroof has a 'one-touch' open/close facility.

Alternative wheel designs are a simple way to personalise your Lupo.

For E and S models you can choose either the classic design of the 14 inch steel wheels or the stylish addition of 14 inch alloy wheels.



Stylish 'Kyalami' 14" alloy wheels with 185/55 tyres, optional on E and S models.



The elegant finish of 14" steel wheels with 185/55 tyres, optional on E and S models.



The optional heated seats have adjustable temperatures.

Optional black leather upholstery perfectly complements the unique interior of the Lupo. The optional leather upholstery pack includes leather rimmed steering wheel, gear knob, gaiter (not auto), handbrake grip and individually heated front sports seats with five preset temperature settings.

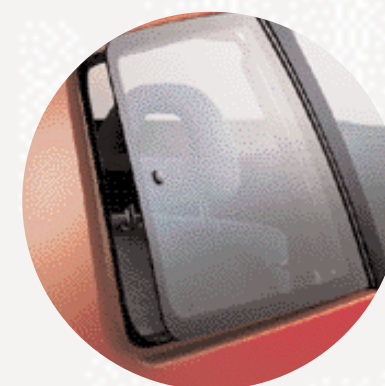


Sumptuous black leather upholstery with heated front sports seats is optional on S, Sport and GTI models.

The convenience of electric front windows and central locking is standard on the Lupo S, Sport and GTI models. For a small price, it can also be enjoyed on the Lupo E.



The convenience of electric front windows and central locking.



Manual opening rear vent windows for improved ventilation are optional on E and standard on S models only.

Air conditioning provides year round comfort. In the summer months it provides welcome relief from hot and humid temperatures, but it's also highly effective in the winter when it can help reduce humidity and maintain a comfortable climate, which may benefit allergy sufferers. Available on all models except those with 1.7 litre SDI engines.



The optional CFC-free air conditioning has an air circulation switch to boost performance.

The single CD player is compatible with both the 'Beta' or 'Gamma' radio/cassette players and fits neatly into the space underneath. Available as an option on all models.



Clear and simple. The single CD player.

Please note the head restraints shown are for 1999 model year.
2003 model year head restraints are tubular, not solid.



Accessories to *complement*
your lifestyle and your Lupo.



5 Star Raceline 6J x 14.
Part No. 1H6 071 494 666



Mesh front grille.
Part No. 6X0 071 550
Not suitable for GTI.



Rear roof spoiler.
Part No. 6X0 071 645 9AX
Only suitable for vehicles from
Chassis No. 6XZYW013500.
Not suitable for vehicles with
Open Air module.



Starlite 7J x 14.
Part No. 6X0 071 499 666



Sport Räder Qualifier 6J x 14.
Part No. 601 VAG 267



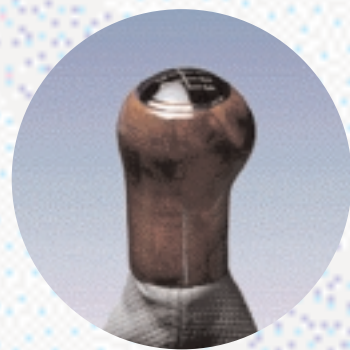
5 Star Softline 5 1/2J x 13.
Part No. 6N0 071 496 666

Sports accessories

Whether for aesthetic appeal or greater practicality, the Volkswagen accessories range could have the answer for those who desire something extra.

All items are specifically designed for Volkswagen models to ensure a harmonious fit.

If you seek maximum performance from your Volkswagen, the sports range is sure to appeal. The lowered suspension (Part No. 6X0 071 676) gives extra rigidity whilst cornering at speed. For a distinctive look, you*



Wooden gear knob.
Part No. 1J0 064 225 B
Not suitable for GTI.

can choose from a range of alloy wheels, and our anti-theft wheel bolts (Part No. ZGB 6N0 071 591) will help keep them securely in place.

In addition there is a mesh front grille to further enhance the external appearance.*

All products in the range are manufactured to the highest quality assurance standards insisted on by Volkswagen.

** Not suitable for GTI.*

Safe and secure

Volkswagen is at the industry forefront when it comes to safety and security. We are amongst the first manufacturers to fit the Isofix child safety system that holds a child seat, through 2 position fixing points, to the vehicle's chassis. This not only ensures greater rigidity, but reduces the time to fit a child seat because there's no need for threading seat belts.



Bobsy G1 ISOFIX DUO, the second generation of Isofix systems. The standardised fixing facility guarantees simple installation and ensures a firm connection between child seat and vehicle – your child is given optimum protection during every journey. Naturally the Isofix can be fastened with a three-point seat belt when changing vehicles.
Part No. 00V 019 909



Bobsy G1-3 suitable for children of approx. 9 months to 12 years or a weight of 9-36 kg.
Part No. 000 019 902 B



Bobsy G3 booster seat with removable back. Suitable for children of approx. 4 to 12 years or for a weight of 17-36 kg.
Base Part No. 000 019 904 B
Sleep support Part No. 000 019 905 B

For additional safety

when travelling, there is a dog restraint to help keep your pets under control.

Security is also high on the priority list, with good protection offered through advanced alarm systems.



Please note the head restraints shown are for 1999 model year. 2003 model year head restraints are tubular, not solid.



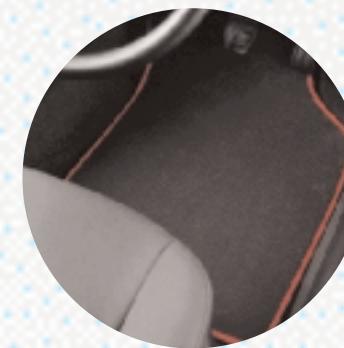
Ski/Snowboard holder.
Maximum 4 pairs skis/2 snowboards.
Part No. 3B0 071 129
Maximum 6 pairs skis/4 snowboards.
Part No. 3B0 071 129 A



Front-loading CD player.
Part No. 1J0 057 119 C



Contoured mudflaps.
Front Part No. 6X0 075 111 A
Rear Part No. 6X0 075 101



Carpet mats (shown with red trim).
Available in slate or slate with red, yellow, blue or green trim.
Part No. Depends on colour.

Practical travel solutions

For day-to-day needs or short-term travel requirements, the extensive range of touring accessories is designed to solve your problems. The roof systems are typical of Volkswagen's attention to detail; they have been wind tunnel tested and

quick release catches make fitment and removal a fast and simple process.

There is a range of attachments for the roof bars including a lockable bicycle holder, a roof box, surfboard holder and two sizes of ski/snowboard holder.

Serious hi-fi

Volkswagen offers an audio range for the Lupo that includes a front-loading CD player. You can also choose upgraded speakers (Part No. 6X0 051 608) to enhance acoustics (not suitable for GTI).

With increasingly sophisticated electronics, it's worth remembering that, when fitted by your Volkswagen retailer, you are assured of compatibility with vehicle systems and quality of installation.

Protection and car care

As a Volkswagen owner, we appreciate that you'll want to maintain your car in first-class condition.

So to help restrict dirt and damage, you'll find a wide selection of products that offer the highest level of protection. Consider the contoured mudflaps designed for individual models to ensure correct positioning and ease of fitment.

In addition, the range of carpet mats, trimmed in colours to match the car's interior, rubber mats and loadliners are a fast and effective way to remove unwanted mud and stones from your car's interior and, in the process, prevent wear and tear to the original carpets. Please consult your retailer for part numbers for the carpet mats.



Roof box – 350 litres.
Part No. 00H 071 350 S



Detachable towbar (excludes electrics).
Part No. 6X0 092 155
Not suitable for models with centre exhaust.
Towbar electrics.
7-pin electrics. Part No. 6X0 055 203 G
13-pin electrics. Part No. 6X0 055 204 G



Dog restraint.
Part No. 861 VAG 597



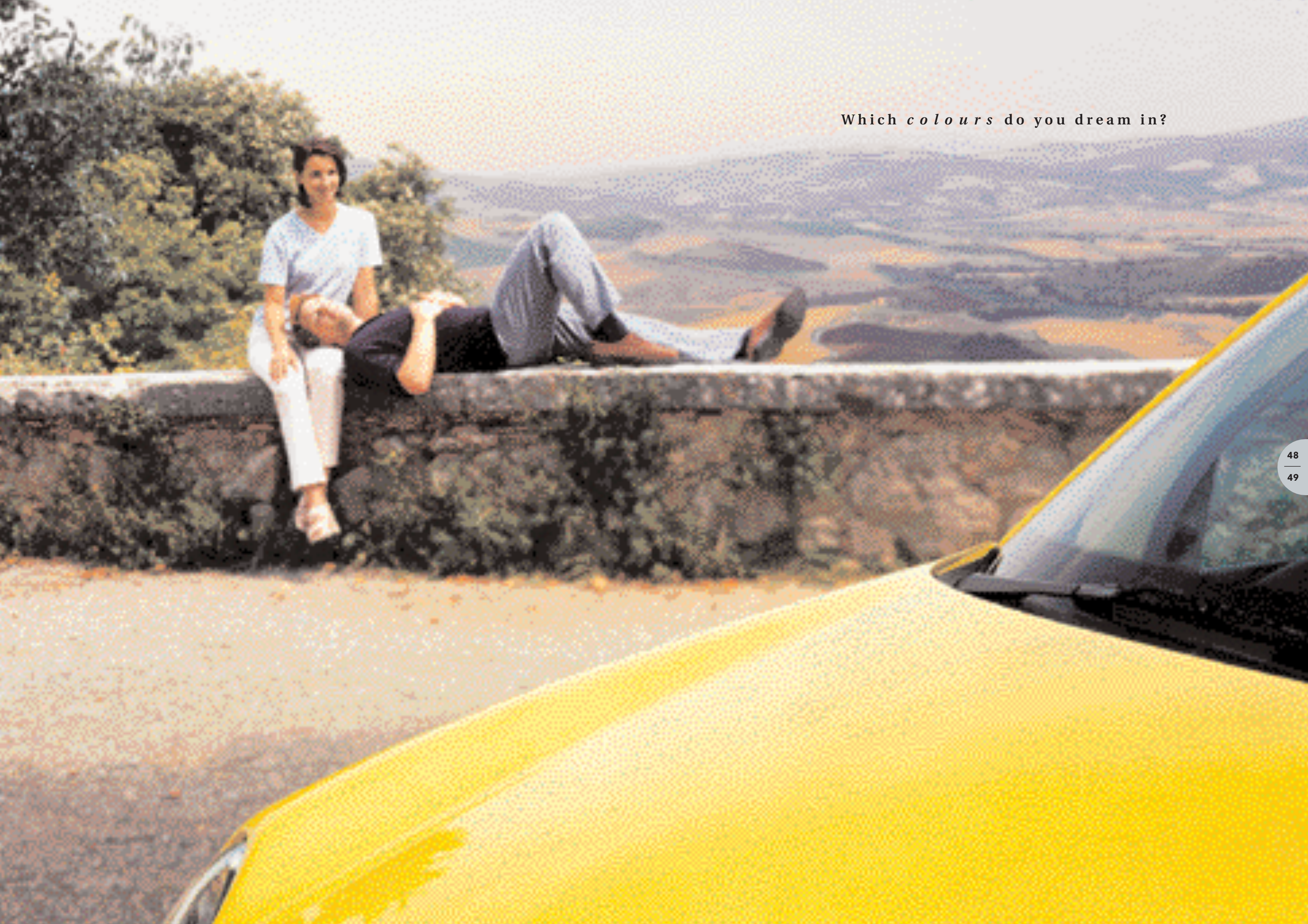
Flexible loadliner.
Part No. 6H0 061 160



Headlight protectors.
Part No. 998 VAG 438

Please note the head restraints shown are for 1999 model year.
2003 model year head restraints are tubular, not solid.

Which *colours* do you dream in?



Exterior paintwork.

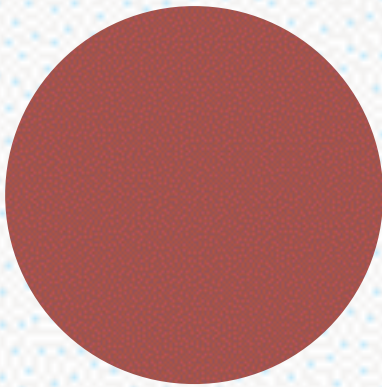
Non-Metallic paint



Black (A1)*



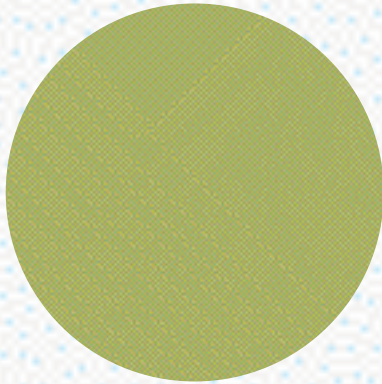
Candy White (B4)



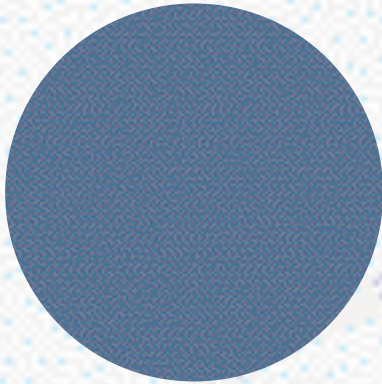
Tornado Red (G2)



Yellow (J5)

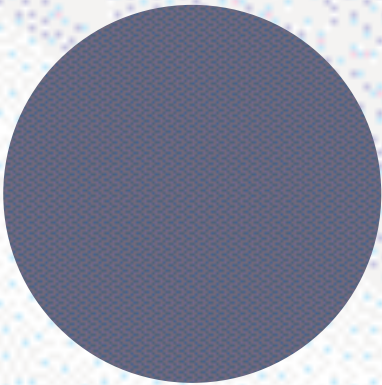


Fantasia Green (2U)



Soft Blue (3J)

Metallic paint*



Raven Blue (5Z)¹

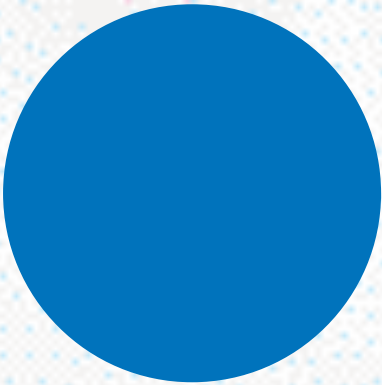


Reflex Silver (8E)

Pearl Effect paint*



Grey Anthracite (F8)



Jazz Blue (1D)

Please note: The print processes do not allow exact reproduction of the paint colour.

For further details, please contact your Volkswagen retailer.

* Black, Metallic and Pearl Effect paint are optional at extra cost.

¹ Raven Blue Metallic 5Z is only available on GTI models.

A choice of upholstery.

E
'Strike' cloth

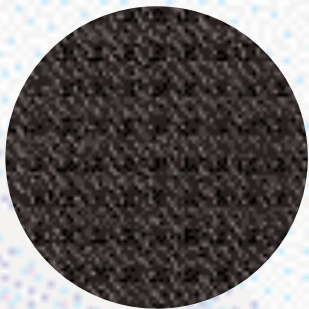


Flannel Grey (BA)

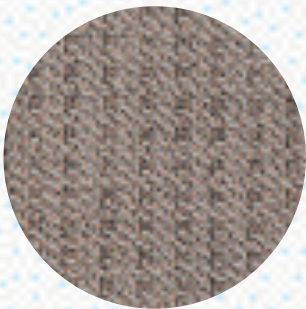


Black (BB)

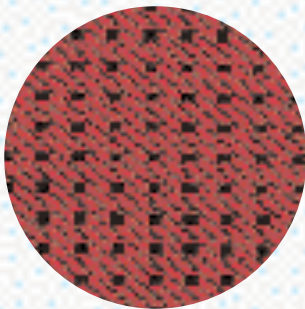
S
'Plaza' cloth



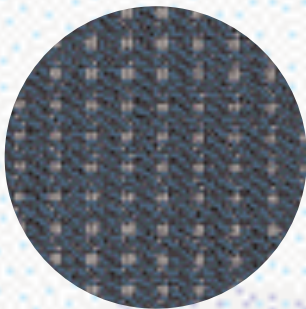
Black/Black (HJ)



Flannel Grey/Grey (HK)

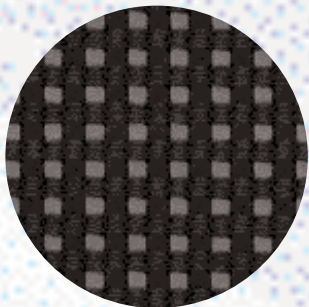


Red/Black (HL)

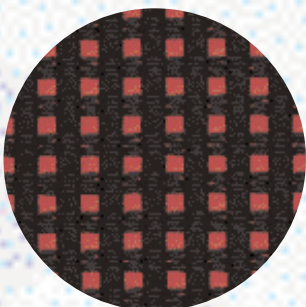


Blue/Flannel Grey (HM)

Sport, GTI
Interwoven velour



Black (UX)



Red/Black (UZ)¹

S, Sport, GTI
Optional leather sports seats



Black (TL)

Please note: The print processes do not allow exact reproduction of the upholstery colour.
For further details, please contact your Volkswagen retailer.

¹ Not available on Sport models.

Colour combinations.

Seat upholstery		Carpets		Dashboard		Black A1*		Candy White B4		Tornado Red G2		Yellow J5		Fantasia Green 2U		Soft Blue 3J		Raven Blue Metallic 5Z*		Reflex Silver Metallic 8E*		Grey Anthracite Pearl Effect F8*		Jazz Blue Pearl Effect 1D*	
E – ‘Strike’ cloth																									
Flannel Grey		BA	Grey	Black		●	●			●	●	●	●	-	-	-	●	●	●	●	-	-			
Black		BB	Black	Black		●	●			●	●	●	●	●	-	-	●	●	●	●	●	●			
S – ‘Plaza’ cloth																									
Black/Black		HJ	Black	Black		●	●			●	●	●	●	●	-	-	●	●	●	●	●	●			
Flannel Grey/Grey		HK	Grey	Black		●	●			●	●	●	●	●	-	-	●	●	●	●	●	●			
Red/Black		HL	Black	Black		●	●			●	-	-	-	-	-	-	●	●	●	●	●	-			
Blue/Flannel Grey		HM	Grey	Black		●	●			-	-	-	-	●	-	-	●	●	●	●	●	●			
Sport – Interwoven velour																									
Black		UX	Black	Black		●	●			●	●	●	●	●	-	-	●	●	●	●	●	●			
GTI – Interwoven velour																									
Black		UX	Black	Black		●	-			●	-	-	-	-	●	-	●	●	●	●	●	-			
Red/Black		UZ	Black	Black		●	-			●	-	-	-	-	-	-	●	●	●	●	●	-			
S, Sport, GTI – Optional leather sports seats																									
Black		TL	Black	Black		○	-			○	-	-	-	-	-	-	○	○	○	○	○	-			
Open Air – Electric full folding sunroof																									
Black		PS				○	○			○	○	○	○	○	-	-	○	-	-	-	○				

● Standard ○ Optional at extra cost – Not available

¹ Raven Blue Metallic 5Z is only available on GTI models.

Please note: * Black, Metallic and Pearl Effect paint are optional at extra cost.

Technical specification.

		E		E, S		Sport	GTI	E, S		Sport
		1.0 litre 50 bhp		1.4 litre 75 bhp		1.4 litre 100 bhp	1.6 litre 125 bhp	1.7 litre SDI 60 bhp		1.4 litre TDI PD 75 bhp
Engine:		Front in-line transversely mounted. Hydraulic maintenance-free tappets. Electrically driven, thermostatically controlled cooling fan. Light alloy cross flow cylinder head with belt driven double overhead camshaft (single on 1.0 litre 50 bhp)					Front transversely mounted. 4 cylinder in-line – petrol, cast iron cylinder block, alloy cylinder head with double overhead camshaft	Front in-line transversely mounted. Hydraulic maintenance-free tappets. Electrically driven, thermostatically controlled cooling fan. Light alloy cross flow cylinder head with belt driven single overhead camshaft		Front transversely mounted. 3 cylinder in-line – diesel, alloy cylinder block and cylinder head with single overhead camshaft
		Manual		Manual Automatic		Manual	Manual	Manual		Manual
	Number of valves	2 per cylinder		4 per cylinder		4 per cylinder	4 per cylinder	2 per cylinder		2 per cylinder
	Cubic capacity, ltrs/cc	1.0/999		1.4/1390		1.4/1390	1.6/1598	1.7/1716		1.4/1422
	Bore/stroke, mm	67.1/70.6		76.5/75.6		76.5/75.6	76.5/86.9	79.5/86.4		79.5/95.5
	Max. output, kw/bhp	37/50		55/75		74/100	92/125	44/60		55/75
	at rpm	5000		5000		6000	6500	4200		4000
	Max. torque, lbs.ft/Nm	63/86		92/126		92/126	112/152	84/115		144/195
	at rpm	3000-3600		3800		4400	3000	2200-3000		2200
	Compression ratio	10.7 : 1		10.5 : 1		10.5 : 1	11.5 : 1	19.5 : 1		19.5 : 1
	Induction	Electronic multipoint fuel injection system		Electronic multipoint fuel injection system		Electronic multipoint fuel injection system	Electronic multipoint fuel injection system	Direct injection		Direct injection
	Exhaust emission control	Catalytic converter		Catalytic converter		Catalytic converter	Catalytic converter	Catalytic converter		Unregulated catalyst
	Fuel grade, minimum	95/91 RON ¹ Unleaded		95/91 RON ¹ Unleaded		95/91 RON ¹ Unleaded	95/91 RON ¹ Unleaded	Diesel		Diesel
Battery, V/A (Ah)	12/175 (36)		12/220 (44) 12/280 (60)		12/220 (44)	12/280 (60)	12/330 (61)		12/330 (61)	
Alternator, amps	70		70 70		70	70	90		120	
Transmission:		Front wheel drive		Front wheel drive		Front wheel drive	Front wheel drive	Front wheel drive		Front wheel drive
Gearbox		5 spd man		5 spd man 4 spd auto		5 spd man	6 spd man	5 spd man		5 spd man
Performance (with half payload):										
Top speed, mph (km/h)										
(where law permits)		94 (152)		106 (172) 104 (168)		116 (188)	127 (205)	97 (157)		106 (170)
Acceleration, secs 0 - 62 mph		17.7		12.0 13.9		10.0	8.3	16.8		12.3
ABI insurance group		2		3 3		6	11	3		4
Environmental information:										
Official fuel consumption according to EU Directive 99/94, mpg/ltr per 100 km										
Urban		36.2/7.8		32.5/8.7 28.0/10.1		29.4/9.6	26.9/10.5	47.9/5.9		49.6/5.7
Extra-urban		60.1/4.7		57.6/4.9 49.6/5.7		54.3/5.2	50.4/5.6	78.5/3.6		78.5/3.6
Combined		48.7/5.8		44.8/6.3 38.7/7.3		41.5/6.8	38.2/7.4	64.2/4.4		64.2/4.4
Fuel tank capacity, galls/ltrs		7.5/34		7.5/34 7.5/34		7.5/34	7.5/34	7.5/34		7.5/34
Official CO ₂ emission, g/km*		139		151 175		163	178	119		119
Noise, dB		72.5		72.5 71.0		73.0	74.0	73.0		73.0

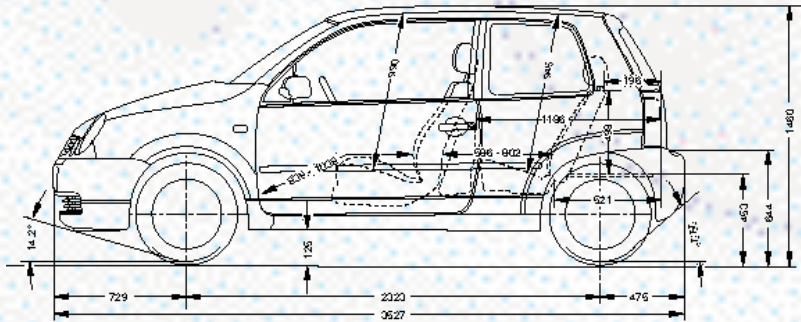
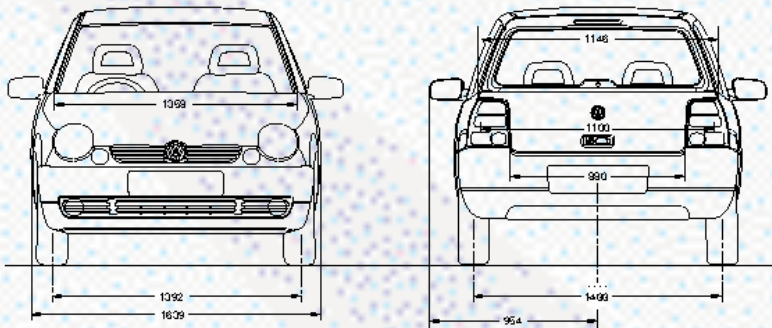
¹ 91 RON may be used, however, with a slight reduction in output.
* Please see page 63 for CO₂ emission details.

Specifications subject to change without notice. Information correct as at 1 May 2002. Please note: All data subject to manufacturer's tolerances.

Technical specification.

		E	E, S		Sport	GTI	E, S		Sport
		1.0 litre 50 bhp	1.4 litre 75 bhp		1.4 litre 100 bhp	1.6 litre 125 bhp	1.7 litre SDI 60 bhp		1.4 litre TDI PD 75 bhp
Running gear:									
	Front axle	McPherson suspension struts and coil springs.				McPherson suspension struts and coil springs.			
		Track stabilising steering geometry				Track stabilising steering geometry			
	Rear axle	Torsion beam trailing arm				Torsion beam trailing arm			
	Steering	Power-assisted, maintenance-free rack and pinion.				Power-assisted, maintenance-free rack and pinion.			
		Collapsible steering column				Collapsible steering column			
	Brakes system	Diagonally split circuits.	Diagonally split circuits.	ABS Diagonally split	Diagonally split circuits.	Diagonally split circuits.	Diagonally split circuits.		
		Servo assisted.	Servo assisted.	circuits. Servo assisted.	circuits. Servo assisted.	Servo assisted.	Servo assisted.		
		Load sensitive brake pressure regulator	Load sensitive brake pressure regulator	Load sensitive brake pressure regulator	Load sensitive brake pressure regulator	Load sensitive brake pressure regulator	Load sensitive brake pressure regulator		
	Front	Discs	Discs	Discs	Ventilated discs	Discs	Discs		
Rear	Self-adjusting drums	Self-adjusting drums	Discs	Discs	Self-adjusting drums	Self-adjusting drums			
Turning circle, ft/m	33.5/10.2	33.5/10.2	33.5/10.2	34.1/10.4	33.5/10.2	33.5/10.2			
Wheels and tyres:									
	Wheel size	5½J x 13	5½J x 13	6J x 14	6½J x 15	5½J x 13	6J x 14		
	Wheel type	Steel	Steel	Alloy 'Kyalami'	Alloy 'Bathurst'	Steel	Alloy 'Kyalami'		
	Tyre size	175/65 R13T	175/65 R13T	185/55 R14H	205/45 R15	175/65 R13T	185/55 R14H		
	Spare wheel	Full size steel	Full size steel	Space-saver steel	None (repair kit supplied)	Full size steel	Space-saver steel		
Weights, lbs/kgs:									
	Unladen weight†	Manual 2086/946	Manual 2198/997	Automatic 2273/1031	Manual 2216/1005	Manual 2238/1015	Manual 2298/1042	Manual 2331/1057	
	Gross vehicle weight	2955/1340	3065/1390	3131/1420	3086/1400	2911/1320	3153/1430	3197/1450	
	Payload†	869/394	867/393	858/389	871/395	673/305	856/388	867/393	
Axle load limit, lbs/kgs:									
	Front	1566/710	1676/760	1719/780	1676/760	1698/770	1764/800	1808/820	
	Rear	1521/690	1521/690	1521/690	1521/690	1323/600	1521/690	1521/690	
Trailer load limits, lbs/kgs:									
	Braked 12% incline	1433/650	1764/800	1764/800	1764/800	TBA	1764/800	1764/800	
	Unbraked	992/450	992/450	992/450	992/450	TBA	992/450	992/450	
Max. luggage capacity, cu.ft/litres:									
		VDA measuring method using 200 x 100 x 50 mm blocks							
	Rear seat upright, 5 seats (4 seats)	4.9 (4.6)/140 (130)	4.9 (4.6)/140 (130)	4.9 (4.6)/140 (130)	4.9 (4.6)/140 (130)	4.6 (N/A)/130 (N/A)	4.9 (4.6)/140 (130)	4.9 (4.6)/140 (130)	
	Rear seat folded	29.4/830	29.4/830	29.4/830	29.4/830	29.4/830	29.4/830	29.4/830	

Exterior dimensions:



All figures in millimetres.

† Figures are calculated in accordance with manufacturer's criteria.

Specifications subject to change without notice. Information correct as at 1 May 2002. Please note: All data subject to manufacturer's tolerances.

Standard equipment.

		E	S	Sport	GTI
Safety and Security:					
ABS:	Anti-lock brakes with EBD	○	○	● ¹	●
Airbags:	Driver airbag	●	●	●	●
	Front passenger airbag	●	●	●	●
Alarm:	With interior protection and remote central locking	–	–	–	●
Body:	Fully galvanised with 12-year anti-corrosion warranty	●	●	●	●
	Door side impact protection	●	●	●	●
	Rigid safety cell with front and rear crumple zones	●	●	●	●
Central locking:	With security protection	○	●	●	●
Electronic engine immobiliser, coded transponder		●	●	●	●
Head restraints:	Front and rear	●	●	●	●
High level third rear brake light		●	●	●	●
Isofix child seat preparation (2 outer in rear seat)		●	●	●	●
Laminated windscreen		●	●	●	●
Seat belts:	Front three-point height-adjustable seat belts with tensioners	●	●	●	●
	Rear 2 x three-point seat belts	●	●	●	●

Functional Equipment:					
Door mirrors:	Internally adjustable, black	●	–	–	–
	Internally adjustable, painted in body colour	–	●	–	–
	Electrically heated and adjustable, painted in body colour	○ ²	○ ²	●	●
Cigarette lighter		●	●	●	●
Front fog lights		○ ²	○ ²	●	–
Headlights:	Halogen clear	●	●	●	–
	Gas discharge (Xenon) dipped beam with headlight washers and automatic height adjustment	–	–	–	●
Heated front seats		○	○	○	○
Heated rear window		●	●	●	●
Heated windscreen washer jets		○ ²	○ ²	●	●
In-car entertainment:	‘Beta’ radio/cassette with 4 speakers, 4 digit security code, and flashing LED	●	●	●	–
	4 x 20 watt output with FM/MW manual/seek tuning, RDS/EON				
	‘Gamma’ radio/cassette with 8 speakers, 4 digit security code, and flashing LED	–	–	–	●
	4 x 20 watt output with FM/MW manual/seek tuning, RDS/EON				
Roof aerial		●	●	●	●
Power-assisted steering		●	●	●	●
Steering column:	Height-adjustable	●	●	●	●
Steering wheel:	Three-spoke	●	●	●	–
	Three-spoke leather rim	–	–	–	●
Warning buzzer for lights if left on		●	●	●	●
Windows:	Electric front with comfort closure and roll back safety system	○	●	●	●
	Rear, tilt manual windows	○	●	–	–
Wipers:		●	●	●	●

● Standard ○ Optional – Not available

¹ Available as factory-fitted option on TDI PD models. ⁵ Not available in conjunction with optional leather upholstery.

² Only in conjunction with front fog light pack. ⁶ Black (UX) only.

³ Not available on 1.7 SDI models. ⁷ Not available on TDI PD models.

⁴ Two cup holders (no coin tray) on GTI models.

		E	S	Sport	GTI
Interior Equipment and Styling:					
Air conditioning:	Manual ³	○	○	○	○
Carpet:	In luggage area	●	●	●	●
Centre console		●	●	●	●
Cup holder/coin tray:	Front	●	●	●	● ⁴
Heating:	Ventilation with four speed fan	●	●	●	●
Instruments:	Speedo and rev counter, service interval display, fuel and temperature gauge, low fuel warning light, blue instrument illumination	●	●	●	●
Luggage cover:	Parcel shelf	●	●	●	●
Seating:	Front driver's with height adjustment	●	●	●	●
	Front driver's and passenger's height adjustment	–	●	●	●
	Front, sports seats	–	–	–	●
	Easy entry	–	●	●	●
	Split folding seat, 2 seats (centre split)	●	●	●	●
Storage:	Rear 3 seats with centre lap belt, 2 outer three-point seat belts, bench seat and 3 rear head restraints ⁵	○	○	○	○
	Map pocket behind driver's seat	–	●	–	●
	Front door side net pockets	●	●	●	●
Sun visors:	Driver's, front passenger's and third sun visor	●	●	●	●
Upholstery:	‘Strike’ cloth	●	–	–	–
	‘Plaza’ cloth	–	●	–	–
	Interwoven velour	–	–	● ⁶	●
Vanity mirrors:	Driver's and passenger's side with cover	●	●	●	●

Exterior Equipment and Styling:					
Body kit, painted in body colour		–	–	–	●
Bumpers, painted in body colour		●	●	●	●
Door handles:	Black	●	–	–	–
	Painted in body colour	–	●	●	●
Exhaust:	Centre, chrome tailpipe	–	–	● ⁷	–
	Centre, chrome twin tailpipe	–	–	–	●
Fuel filler flap:	Lockable	●	●	●	●
Green tinted glass		●	●	●	●
Indicators:	Front, white lenses	●	●	●	●
	Rear, darkened lenses	●	●	●	●
Side rubbing strips:	Black	●	–	–	–
	Painted in body colour	–	●	●	●
Wheels:	5½J x 13 steel wheels, 175/65 R13 tyres with 13" wheel trims	●	●	–	–
	6J x 14 steel wheels, 185/55 R14 tyres with 14" wheel trims	○	○	–	–
	6J x 14 ‘Kyalami’ alloy wheels, 185/55 R14 tyres and anti-theft wheel bolts	○	○	●	–
	6½J x 15 ‘Bathurst’ alloy wheels, 205/45 R15 tyres and anti-theft wheel bolts	–	–	–	●
	Steel, full size spare wheel	●	●	–	–
	Steel, space-saver spare wheel	–	–	●	–
	Repair kit (no temporary steel space-saver spare wheel)	–	–	–	●

Volkswagen service

for your *p e a c e* of mind.

The Volkswagen Warranty.

3-year Warranty.

All Volkswagen Lupos now come with a 3-year/60,000 miles warranty, which protects your car against the failure of most mechanical and electrical components due to manufacturing defects. This comprises a 2-year manufacturer's warranty with unlimited mileage plus a further 1-year/60,000 miles (whichever is soonest) Retailer Warranty. Should the mileage exceed 60,000 miles within the first two years, the manufacturer's 2-year warranty will still be valid. If an additional warranty for subsequent years or higher mileage is desired, it may be purchased from any authorised Volkswagen retailer; however, this additional warranty must be purchased before the mileage reaches 59,999. Cover is subject to the car being serviced and maintained at an authorised Volkswagen retailer according to the manufacturer's recommendations. Full details of the 3-year warranty are available from your Volkswagen retailer. This 3-year warranty is only available on vehicles purchased in the UK through an authorised Volkswagen retailer.

3-year Paint Warranty.

The paintwork of the Lupo is covered against manufacturing defects for a period of 3 years. Naturally, the Lupo must be cared for in compliance with the operating instructions which will be found in your vehicle handbook. Please consult your Volkswagen retailer for full warranty details.

12-year Body Protection Warranty.

The internal body sections and panels of the Lupos are covered against rusting through from the inside for a period of 12 years. Naturally, the Lupo must be cared for in compliance with the operating instructions. Please consult your Volkswagen retailer for full warranty details.

Service Intervals for Petrol and Diesel Engines.

Full details of what checks and work are recommended at each service are contained in the Service Book and your Volkswagen retailer will be able to advise you of any particular requirements.

Approved Accessories.

A comprehensive range of accessories from alloy wheels to carpet mats is available to complement the factory-fitted option list. Volkswagen Approved accessories purchased from and fitted by your Volkswagen retailer at the point of vehicle sale will also benefit from the 3-year vehicle warranty.

Volkswagen Insurance.

Competitive insurance premiums are available to Volkswagen owners through Volkswagen Insurance Service (Great Britain) Limited. Volkswagen Insurance guarantee that all repair work is undertaken by an authorised Volkswagen retailer using only genuine parts, thus ensuring that the manufacturer's warranties remain in force. For a quotation, telephone Linkline: 0845 600 8006.

Extended Warranty.

You may purchase additional protection from your retailer or contact 0870 9000 115.

Volkswagen Finance.

Volkswagen Finance offers a dedicated service to meet the needs of both the business user and the private motorist. We can help you choose the right type of finance and will tailor the package to meet your specific requirements. Please consult your Volkswagen retailer for details.

Volkswagen Assistance.

Every new car is registered for Volkswagen Assistance for 1 year.

This provides vehicle recovery in the unlikely event of a breakdown (subject to conditions). Volkswagen Assistance can also be purchased for subsequent years. For full details, please contact your Volkswagen retailer.

Tax Free Sales.

For full details, please contact your Volkswagen retailer.

CO₂ Emission.

The weight of a vehicle will influence the level of CO₂ emission it produces; as a result, vehicles with higher levels of specification and factory-fitted options may emit higher levels of CO₂.

The CO₂ figure quoted for each vehicle is the maximum possible. The unladen weight of the vehicle is calculated by range at the time of manufacture and the maximum possible CO₂ emission for that weight range is applied according to the Council Directive 80/1268EEC as amended by Commission Directive 1999/100/EC on the approximation of the laws of the member states relating to the carbon dioxide emissions and the fuel consumption of motor vehicles.

Please Note:

Some illustrations in this brochure do not necessarily reflect UK specifications and may not be available. Consequently, controls and some items of equipment are positioned differently for the UK.

The specifications contained in this brochure are for information purposes only and are subject to change. If you require any specific feature, you must consult your Volkswagen retailer who is regularly updated with any change in specification. Please check model availability and full specification details with your Volkswagen retailer prior to ordering.

All vehicles fitted with accessories in this brochure have been registered.

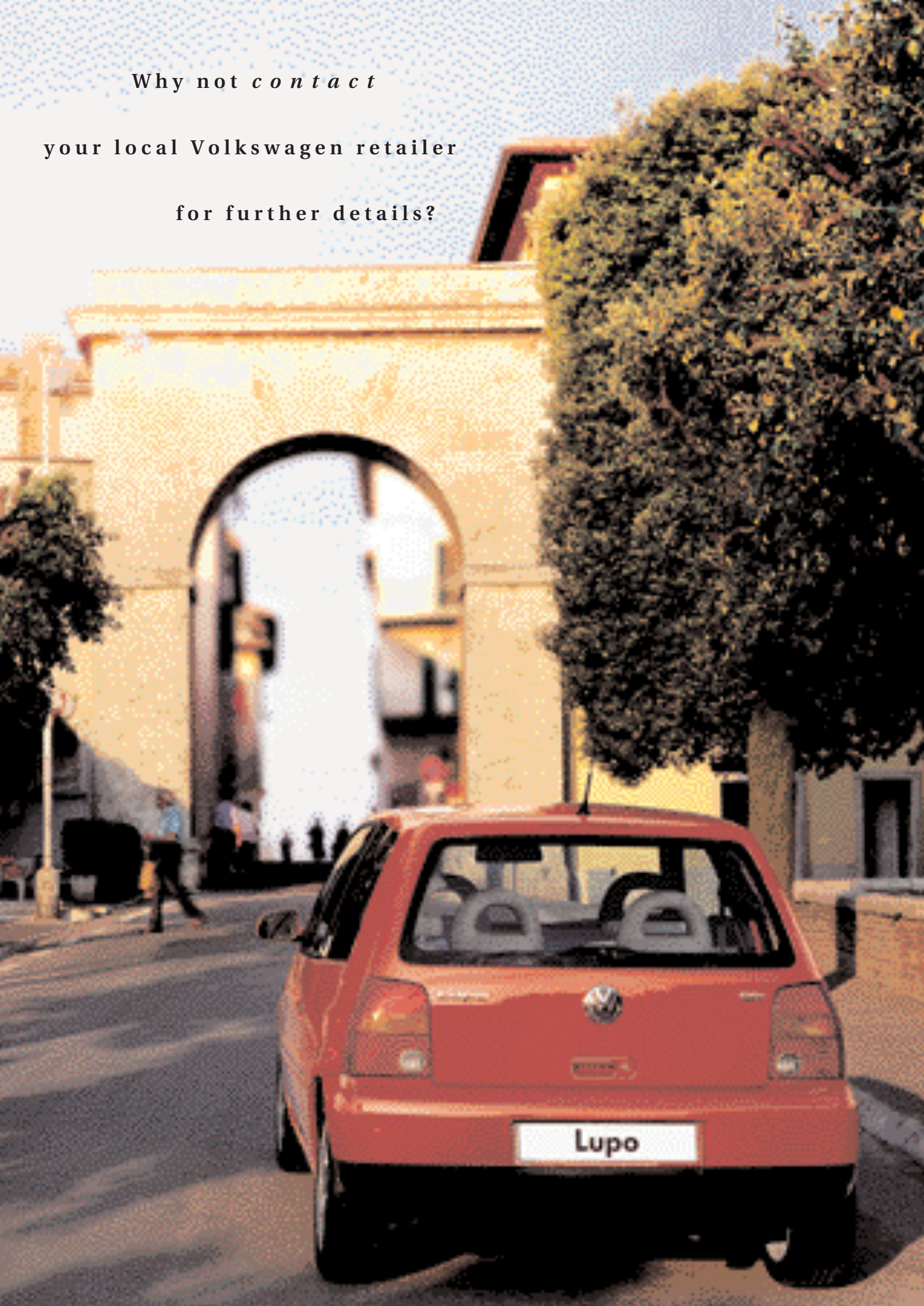
Note:

We would like to advise you that telephone calls to Volkswagen Customer Care may be monitored and recorded as part of our training and quality assurance processes. All our monitoring and recording processes meet OfTel regulations.

Why not *contact*

your local Volkswagen retailer

for further details?





Volkswagen Information Service. Telephone 0800 333 666

Internet: www.volkswagen.co.uk

© Volkswagen Group United Kingdom Limited 2002.

Issue: 1 May 2002. Printed in UK.

PVW050LU