

**RENAULT 18** *Mark 2*  
**SALOON**  
**AND ESTATE**



## A NEW STYLE

Renault 18 Turbo Mark 2.

Distinctive new side stripes and alloy wheels distinguish the new Renault 18 Turbo Mark 2 and depending on the version, most models have a new steering wheel, restyled dashboard and interior trim. On the outside, they feature wide side protection

mouldings (with an integral rear spoiler on the saloons) plus a restyled front grille on all the range. Exceptional aerodynamics and road holding, stylish and refined performance and economy... Saloon or Estate, the Renault 18 is in top

shape. More up-to-date, even more elegant, it is a brilliant example of modern motor engineering. 8 versions, 6 power packages including a Diesel and a Turbo... Pleasure and efficiency... that's the new Renault 18 approach.





## RENAULT 18 TURBO SALOON

1565 cc (125 bhp DIN)

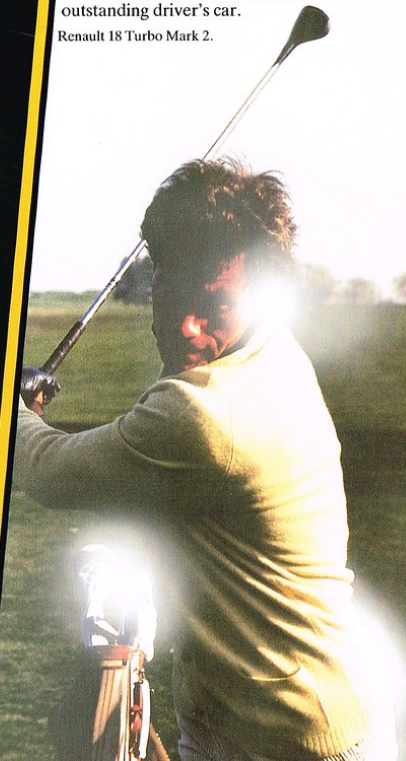
Exceptional performance deserves exceptional equipment. To take advantage of the turbo power and make the most of its qualities, the Renault 18 Turbo Saloon is equipped with an extremely comprehensive set of instruments and equipment...

Electronic rev-counter, Turbo pressure gauge and oil level and pressure gauge... New style alloy wheels with ultra low profile tyres, all round disc brakes, plus laminated windscreen, tinted glass and headlamp wash/wipe...

The driver's door mirror is obviously adjustable from inside the car, the front windows are electrically operated and another unique feature of the Renault 18 Turbo is the central door locking with a remote control facility.

The luxury and originality of the equipment plus turbo power makes the Mark 2 Renault 18 Turbo an outstanding driver's car.

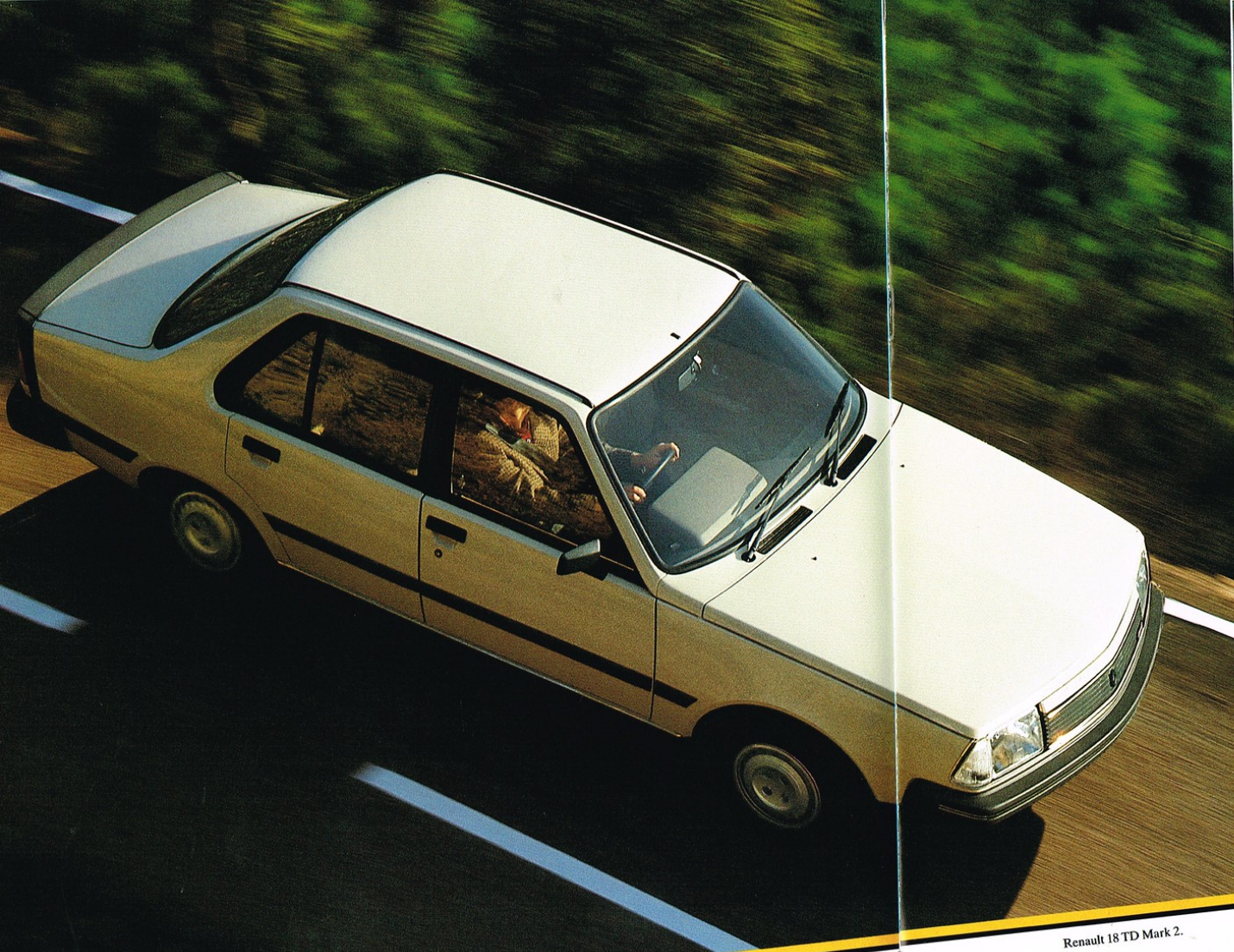
Renault 18 Turbo Mark 2.





The Renault 18 Turbo enjoys long journeys...  
Velour upholstery and door trim, "petale" shaped front seats with head-restraints, deep pile carpeting, leather-bound, adjustable, sports steering wheel, power assisted steering.  
All the equipment to make your journey enjoyable too.

Renault 18 Turbo: seats trimmed in patterned velour upholstery.

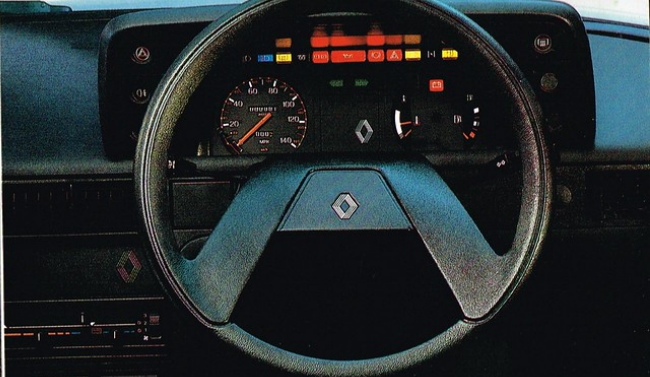


## RENAULT 18 TD SALOON OR ESTATE

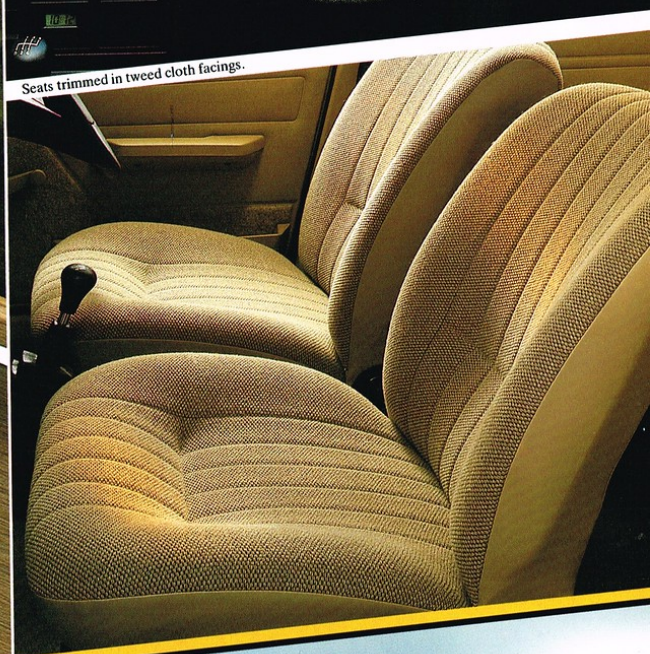
2068 cc Diesel (67 bhp DIN)  
With the rear integral spoiler,  
the wide side protective mouldings  
and the new style radiator grille,  
the Renault 18 TD Diesel offers

you the pleasure of driving a well-equipped and elegant saloon. The car is fitted with reversing lights and a heated rear window. It has a newly styled steering wheel and adjustable front head-restraints. On the Renault 18 TD, the interior with reclining seats at the front, is trimmed in a hardwearing, attractive tweed

cloth. The central console of the new dashboard incorporates a digital clock and an ashtray with an illuminated cigar lighter. The Renault 18 TD with its 5-speed gearbox and its well equipped interior gives you effortless and economical cruising mile after mile, either in saloon or estate version.

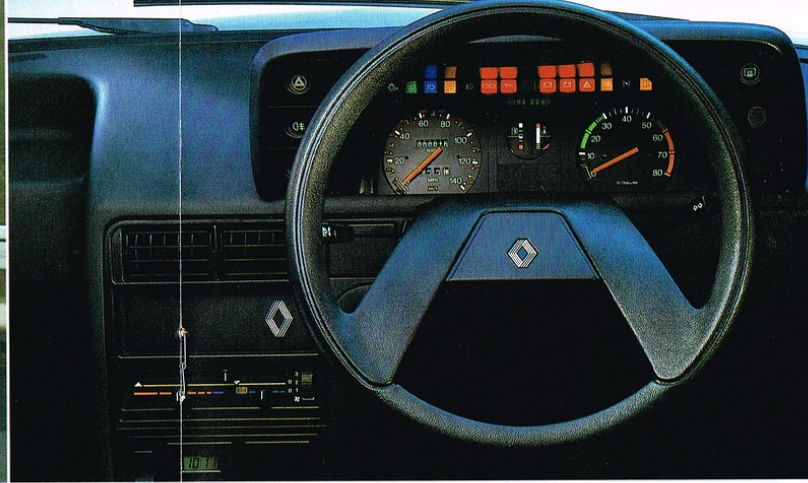


Seats trimmed in tweed cloth facings.



Renault 18 TD Mark 2.

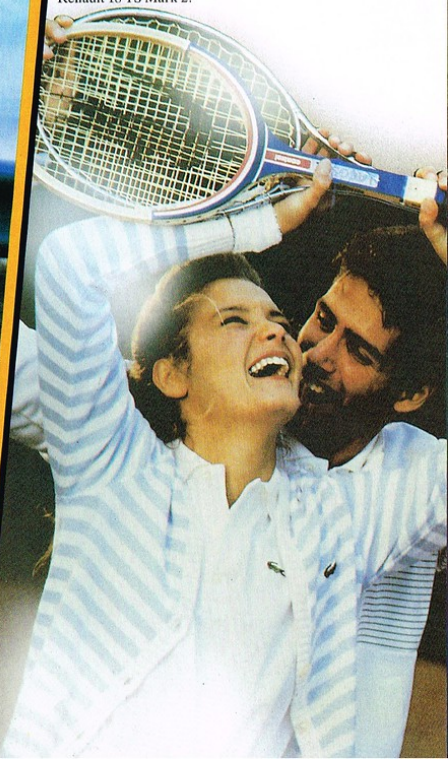


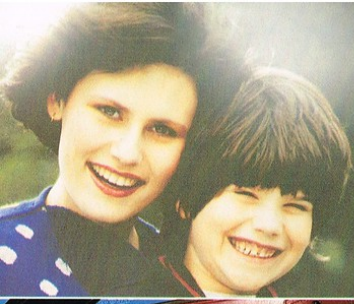


**RENAULT 18**  
**TS AND GTS**  
**SAALOONS**  
1647 cc (96 bhp DIN)  
**GTL ESTATE**  
1647 cc (73.5 bhp DIN)  
**AUTOMATIC SALOON**  
1995 cc (110 bhp DIN)

Responsive and elegant with their side protective mouldings, their decorative stripes and, for the saloons, their integral rear spoiler, the Renault 18's, in either of these versions offer equipment of a high standard. A comprehensive set of instruments including a rev counter (except on Automatic version), a new stylish and practical dashboard plus plenty of storage space for the odds and ends which make journeys pleasant. The driver's door mirror is adjustable from inside and the digital clock has the precision of a chronometer. The windscreen wipers have two speeds and an intermittent wipe facility, and a buzzer warns if the headlamps have been left on when you leave the car. The GTL estate has the addition of an intermittent rear screen wash/wipe system.

Renault 18 TS Mark 2.





Comfort and space... The front seats with adjustable heat-restraints take the fatigue out of driving. The 14 cu. ft. boot of the Saloon can take everything and the loading space of the Estate transforms rapidly from 17 to 55 cu. ft. when the seats are folded down. The Renault 18 GTL Estate is also available with the option of a "custom pack" including electric front windows, tinted glass and central door locking; these are standard features on the Renault 18 GTS Saloon.

Renault 18 GTL Estate: seats trimmed in velour cloth facings.





Seats fully upholstered in velour cloth.

## RENAULT 18 GTX ESTATE

1995 cc (104 bhp DIN)

The Renault 18 GTX Mark 2 Estate is capable of 110 mph plus... It is distinguished by new style alloy wheels, decorative side stripes and restyled front grille. With the chrome

roof rack side rails and rear luggage cover these all add up to a very distinctive estate car.

The Renault 18 GTX Estate is a brilliant performer but also offers a high standard of comfort and equipment to make long journeys a pleasure.

The dashboard incorporates an electronic rev counter, an oil level indicator and a digital clock. At the front, the windows are electrically

operated and the central door locking incorporates a remote control facility. The velour seat upholstery is colour-keyed with the plush carpeting. The atmosphere is luxurious and the seats are soft but firm enough to provide good support for the back and lumbar region. The latest equipment and long distance comfort for the Renault 18 GTX Estate: a luxurious load carrier.

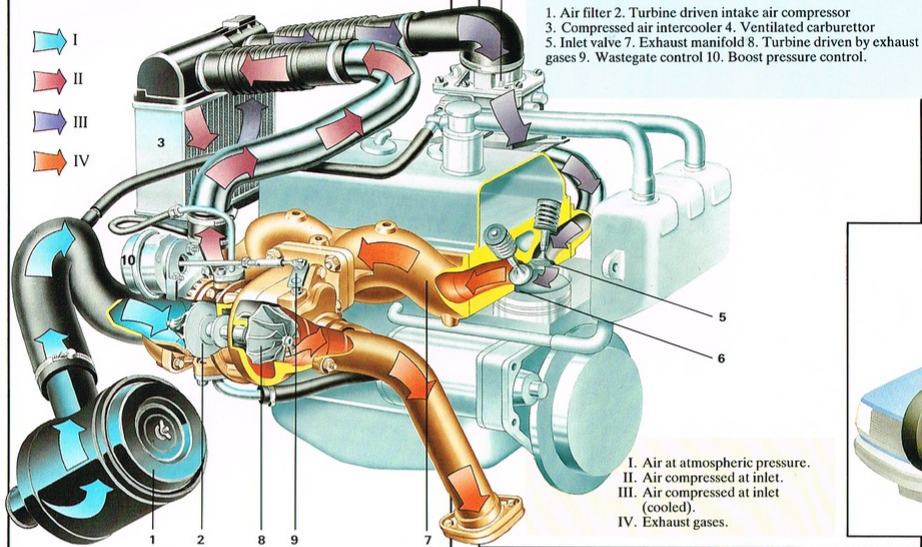
Renault 18 GTX Estate Mark 2.





## 6 HIGH PERFORMANCE ENGINES

The Renault 18 offers you a choice of 6 engines, all products of the same technology and expertise. All (except for the Diesel), are equipped with integral electronic ignition which practically eliminates the need for adjustment and significantly reduces fuel consumption as its spark is perfectly timed to suit engine speed. All combine driving pleasure with remarkable economy, both in fuel and maintenance.



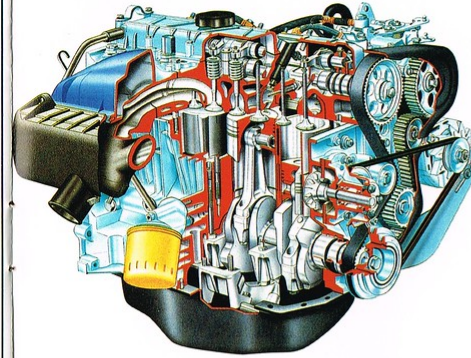
## THE 1565 cc TURBO ENGINE

is the most powerful of the Renault 18 range, developing 92 kW ISO (125 bhp DIN) at only 5500 rpm. Its turbocharger is driven by the exhaust gas. Performance and especially ride are outstanding and the Renault 18 Turbo Saloon is capable of a top speed of over 120 mph. And yet, fuel consumption is still a low 36.7 mpg at 75 mph.

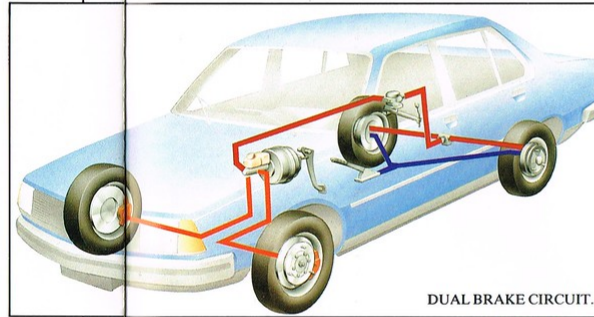
### 1565 cc TURBO ENGINE.

1. Air filter
2. Turbine driven intake air compressor
3. Compressed air intercooler
4. Ventilated carburettor
5. Inlet valve
7. Exhaust manifold
8. Turbine driven by exhaust gases
9. Wastegate control
10. Boost pressure control.

- I. Air at atmospheric pressure.
- II. Air compressed at inlet.
- III. Air compressed at inlet (cooled).
- IV. Exhaust gases.



2068 cc DIESEL ENGINE.



DUAL BRAKE CIRCUIT.

## THE 1647 cc ENGINE

is fitted with a twin choke carburettor. It powers the Renault 18 GTL Estate and develops 53 kW ISO (73.5 bhp DIN) at 5000 rpm; in the more powerful Renault 18 TS and GTS Saloons this engine develops 69 kW ISO (96 bhp DIN) at 5750 rpm.

## THE 1995 cc ENGINE

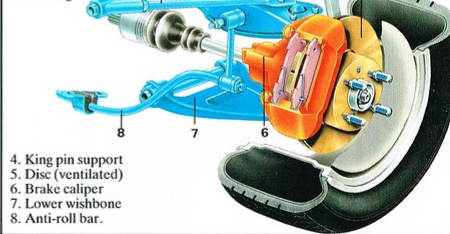
has a power of 75 kW ISO (104 bhp DIN) at 5500 rpm. With it, the Renault 18 GTX Estate tops 110 mph. The Renault 18 Automatic Saloon shares the same engine tuned to develop 79.5 kW ISO (110 bhp DIN) at 5500 rpm.

## THE 2068 cc DIESEL ENGINE

which powers the Renault 18 TD Saloon and Estate is fitted with a turbulence chamber made from heat resisting steel. The light alloy crankcase and cylinder head account for its lightness and efficiency. It develops 48 kW ISO (67 bhp DIN) at 4500 rpm and its excellent performance is also very fuel-efficient: only 60.1 mpg at 56 mph!

### FRONT SUSPENSION OF THE RENAULT 18 TURBO.

1. Cast tie rod
2. Upper suspension wishbone
3. Steering rod



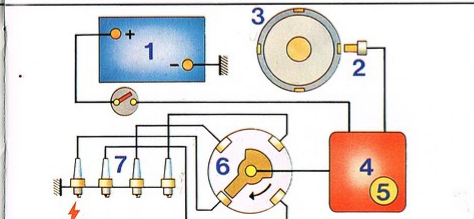
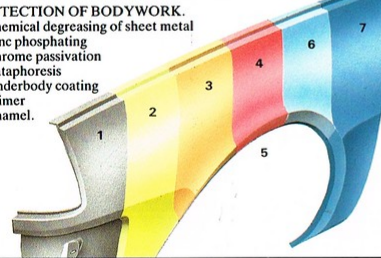
4. King pin support
5. Disc (ventilated)
6. Brake caliper
7. Lower wishbone
8. Anti-roll bar.

## IMPACT PROTECTION

Fore and aft, progressive crumple zones absorb kinetic energy. The collapsible steering column is fitted with a universal joint. Underfloor cross beams prevent the wheels from intruding into the passenger compartment after violent impact. Welded components ensure roof panel rigidity. The fuel tank is in a protected position.

### PROTECTION OF BODYWORK.

1. Chemical degreasing of sheet metal
2. Zinc phosphating
3. Chrome passivation
4. Cathodoporesis
5. Underbody coating
6. Primer
7. Enamel.



### INTEGRAL ELECTRONIC IGNITION.

1. Battery
2. Magnetic pick-up
3. Engine flywheel
4. Electronic control unit with coil
5. Vacuum control unit
6. Distributor
7. Spark plug.

## 5-SPEED TRANSMISSION FOR SILENCE AND ECONOMY

With the exception of the Renault 18 Automatic Saloon, all the other models of the line-up are equipped with a 5-speed transmission. The gears are so spaced that the engine is always close to maximum efficiency and even at high speed on motorways, engine speed is moderate. Mechanical fatigue is reduced, silence is remarkable and fuel consumption improved: the Renault 18 TD Diesel Estate for instance, achieves 44.8 mpg at 75 mph.

## AERODYNAMIC EFFICIENCY

The new Renault 18's all have exceptional aerodynamics (Cd of 0.34 for the Saloons). It's the result of hundreds of manhours spent on development in the wind tunnel. This has made it possible to define its extremely effective lines and improve the design, like the introduction of the integral rear spoiler on the Saloons, as well as less visible items which are just as important, such as the incorporation of a streamlined cover for the spare wheel housing.

## ELECTRONIC BRAIN AND THE RENAULT 18 AUTOMATIC

With the automatic transmission, no more unnecessary fatigue and irritation, you forget all your worries and calmly enjoy the pleasure of driving. The car is responsive, it shifts down automatically when you need good, strong acceleration, when overtaking for example. The 2-litre engine always runs at the right speed and its performance both in top speed and responsiveness is impressive.

## NEGATIVE OFFSET STEERING GEOMETRY

Originally developed for the Renault 18 Turbo, it has now been applied across the range. It ensures directional stability especially when cornering or braking hard. The suspension, independent at the front and a dead axle at the rear, is fitted with coil springs, telescopic dampers and anti-roll bars. The Renault 18 takes even the tightest corners in its stride, maintaining excellent road grip.

## POWER BRAKES AND DUAL BRAKE CIRCUIT

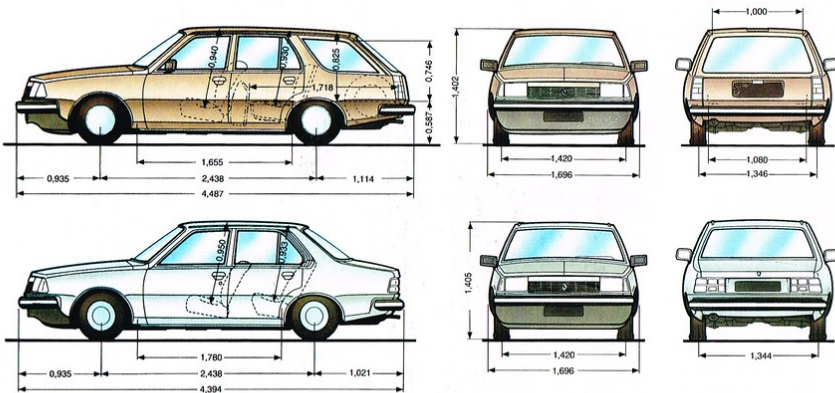
The powerful servo-assisted brakes, discs at the front (ventilated on the Turbo, GTX, Automatic, GTS and TS versions), are dual circuit with a load sensitive brake limiting valve. With its performance in mind, the Renault 18 Turbo is fitted with discs on all four wheels.

## ANTI-CORROSION PROTECTION

The bodies of the Renault 18 Saloons or Estates pass through 7 successive stages of metal preparation and painting: chemical degreasing, zinc phosphating, chrome passivation, a cathodic electrocoat dip to protect those areas which are inaccessible to the spray gun, underbody coating, primer and finally the enamel plus a clear lacquer for metallic and black paints.

## TECHNICAL CHARACTERISTICS

VERSIONS	Renault 18 TS/GTS	Renault 18 GTL Estate	Renault 18 Automatic	Renault 18 GTX Estate	Renault 18 Turbo	Renault 18 TD	Renault 18 TD Estate
Seating capacity	5	5	5	5	5	5	5
<b>GENERAL SPECIFICATION</b> Front wheel drive, body welded on to platform cum chassis-floor.							
Kerb weight	2183 lbs (990 kgs)	2260 lbs (1025 kgs)	2359 lbs (1070 kgs)	2524 lbs (1145 kgs)	2293 lbs (1040 kgs)	2238 lbs (1015 kgs)	2381 lbs (1080 kgs)
Gross vehicle weight	3109 lbs (1410 kgs)	3252 lbs (1475 kgs)	3241 lbs (1470 kgs)	3316 lbs (1505 kgs)	3175 lbs (1440 kgs)	3197 lbs (1450 kgs)	3472 lbs (1575 kgs)
Towing weight (braked)	2315 lbs (1050 kgs)	2094 lbs (950 kgs)	2315 lbs (1050 kgs)	2094 lbs (950 kgs)	2094 lbs (950 kgs)	2094 lbs (950 kgs)	2094 lbs (950 kgs)
Towing weight (unbraked)	1124 lbs (510 kgs)	1124 lbs (510 kgs)	1157 lbs (525 kgs)	1235 lbs (560 kgs)	1146 lbs (520 kgs)	1102 lbs (500 kgs)	1213 lbs (550 kgs)
<b>ENGINE</b> Petrol: 4 stroke, 4 cylinder in line mounted forward of the front axle. Twin-choke carburettor on all models except 18 Turbo (Garrett turbo compressor) and 18 TD - Electronic ignition on all models except 18 TD. Diesel: 4 stroke, 4 cylinder in line mounted forward of the front axle.							
Capacity (cc)	1647	1647	1995	1995	1565	2068	2068
Bore/stroke (mm)	79 x 84	79 x 84	88 x 82	88 x 82	77 x 84	86 x 89	86 x 89
Compression ratio	9.3:1	9.3:1	9.2:1	9.2:1	8.6:1	21.5:1	21.5:1
Maximum power kW ISO	69	53	79.5	75	92	48	48
bhp (DIN)	96	73.5	110	104	125	67	67
at rpm	5750	5000	5500	5500	5500	4500	4500
Maximum torque Nm ISO	130	127.5	160	157	181	124	124
mkg (DIN)	13.5	13.3	16.6	16.3	18.5	12.9	12.9
at rpm	3500	3000	3000	3250	2500	2250	2250
Fan	Electric	Electric	Electric	Electric	Electric	Electric	Electric
<b>GEARBOX</b>							
Number of forward gears	5	5	3	5	5	5	5
<b>BRAKING SYSTEM</b> Dual circuit with pressure limiter.							
Front wheels	Ventilated Discs	Discs	Ventilated Discs	Ventilated Discs	Ventilated Discs	Discs	Discs
Rear wheels	Drums	Drums	Drums	Drums	Drums	Drums	Drums
Assistance	Servo	Servo	Servo	Servo	Servo	Servo	Servo
<b>SUSPENSION</b> Independent front wheel suspension with dead axle at rear, helical springs, telescopic hydraulic shock absorbers and anti-roll bars front and rear. Negative offset steering geometry.							
<b>STEERING</b> Rack and pinion							
	Manual	Manual	Power steering	Power steering	Power steering	Manual	Manual
Number of wheel turns lock to lock	4.13	4.13	2.65	2.75	2.75	4.13	4.13
Turning circle between kerbs (ft)	33.5	33.5	34.8	33.5	33.5	33.5	33.5
<b>TYRES</b> Tubeless							
	165 R 13 S	165 R 13 S	165 R 13 H	185/65 R 14 H	185/65 R 14 H	165 R 13 S	165 R 13 S
<b>CAPACITIES</b>							
Petrol tank (galls)	11.7	12.5	11.7	12.5	11.7	11.7	12.5
Luggage capacity (cu.ft)	14	17 to 55	14	17 to 55	14	14	17 to 55
<b>PERFORMANCE</b>							
Maximum speed (mph)	111	99	115	113	122	100	97
<b>FUEL CONSUMPTION</b>							
At 56 mph (90 kph)	50.4 mpg (5.6 lts)	55.4 mpg (5.1 lts)	40.3 mpg (7.0 lts)	43.5 mpg (6.5 lts)	51.4 mpg (5.5 lts)	60.1 mpg (4.7 lts)	60.1 mpg (4.7 lts)
At 75 mph (120 kph)	37.7 mpg (7.5 lts)	39.8 mpg (7.1 lts)	31.7 mpg (8.9 lts)	32.8 mpg (8.6 lts)	36.7 mpg (7.7 lts)	42.2 mpg (6.7 lts)	44.8 mpg (6.3 lts)
Urban cycle	28.2 mpg (10.0 lts)	32.5 mpg (8.7 lts)	24.1 mpg (11.7 lts)	25.9 mpg (10.9 lts)	29.1 mpg (9.7 lts)	38.2 mpg (7.4 lts)	38.2 mpg (7.4 lts)



## RENAULT 18 MARK 2 EQUIPMENT

	TS	GTS	GTL Estate	Auto.	GTX Estate	Turbo	TD	TD Estate
Integral front spoiler	•	•	•	•	•	•	•	•
Wrap-around rear spoiler	•	•	•	•	•	•	•	•
Front and rear polyester bumpers	•	•	•	•	•	•	•	•
Wide side protection strips	•	•	•	•	•	•	•	•
Side striping	•	•	•	•	•	•	•	•
Specific Turbo badging	—	—	—	—	—	—	—	—
Aerodynamic wheel trims	•	•	•	•	•	•	•	•
4 light alloy wheels with 185/65 R 14 H ultra low profile tyres	—	—	—	—	—	—	—	—
Iodine headlamps	•	•	•	•	•	•	•	•
Headlamp wash/wipe	—	—	—	—	—	—	—	—
Reversing lights - Rear fog lamp	•	•	•	•	•	•	•	•
Internal headlamp beam adjustment	—	—	—	—	—	—	—	—
Intermittent rear wash/wipe	—	—	—	—	—	—	—	—
Roof rack side rails	•	•	•	•	•	•	•	•
Remote control driver's door mirror	•	•	•	•	•	•	•	•
Passenger door mirror	•	•	•	•	•	•	•	•
Laminated windscreen - Heated rear window	•	•	•	•	•	•	•	•
Tinted glass	—	•	—	—	•	•	—	—
2-speed windscreen wipers with flick wipe	•	•	•	•	•	•	•	•
3-speed windscreen wipers with intermittent wipe	•	•	•	•	•	•	•	•
Electric windscreen washer	•	•	•	•	•	•	•	•
Tweed upholstery	•	•	•	•	•	•	•	•
Velour upholstery	•	•	•	•	•	•	•	•
Patterned velour seats, "petale" shaped at front	—	—	—	—	•	•	—	—
Reclining front seats with adjustable head restraints	•	•	•	•	•	•	•	•
Fully carpeted front and rear	•	•	•	•	•	•	•	•
Rear luggage cover	—	—	—	—	•	•	—	—
Adjustable steering wheel for height	—	—	—	—	•	•	—	—
Leather-covered sports steering wheel and gear lever knob	—	—	—	—	•	•	—	—
Pre-radio equipment with roof aerial and speaker grilles	•	•	•	•	•	•	•	•
Glove box with lid - Front door pockets	•	•	•	•	•	•	•	•
Central console with air vents	•	•	•	•	•	•	•	•
3-speed ventilation system	•	•	•	•	•	•	•	•
Illuminated heater controls, ash-tray and cigar lighter	•	•	•	•	•	•	•	•
Rheostat for dashboard light intensity	•	•	•	•	•	•	•	•
"Headlamps on" warning buzzer	•	•	•	•	•	•	•	•
Map reading light	•	•	•	•	•	•	•	•
Digital clock - Trip meter	•	•	•	•	•	•	•	•
Electronic rev counter	•	•	•	•	•	•	•	•
Oil level gauge	—	—	—	—	•	•	—	—
Turbo pressure gauge	—	—	—	—	•	•	—	—
Water temperature gauge	•	•	•	•	•	•	•	•
Low fuel level warning light	•	•	•	•	•	•	•	•
Electric front windows	•	•	•	•	•	•	•	•
Central door locking	—	—	—	—	•	•	—	—
Remote control door locking	—	—	—	—	•	•	—	—
Power-assisted steering	•	•	•	•	•	•	•	•
5-speed gearbox	•	•	•	3 Auto	•	•	•	•
<b>OPTIONS</b>								
Custom pack (central door locking, electric front windows and tinted glass)	—	•	—	—	—	—	—	—
Leather upholstery	—	—	—	—	•	•	—	—
Supergloss/metallic paint	•	•	•	•	•	•	•	•

• Standard — Not available

VERSIONS	UPHOLSTERY	BODY COLOURS									
		Beige 159	White 355	Red 705	Bordeaux 721	Black 694*	Aurora Beige 116*	Cosmic Blue 402*	Silver Grey 620*	Cloud Grey 624*	Lagoon 979*
RENAULT 18 TS	VELOUR	SAND	SAND	ASH	SAND		SAND	ASH	ASH		
RENAULT 18 GTS	VELOUR	SAND	SAND	ASH	SAND		SAND	ASH	ASH		
RENAULT 18 GTL Estate	VELOUR	SAND	SAND	ASH	SAND		SAND	ASH	ASH		
RENAULT 18 Automatic	VELOUR		SAND		SAND		SAND	ASH	ASH	SAND	
RENAULT 18 GTX Estate	VELOUR			ASH	SAND		SAND	ASH	ASH	SAND	SAND
RENAULT 18 Turbo	PAT. VELOUR			ASH		ASH	SEPIA		ASH		SEPIA
RENAULT 18 TD	TWEED	SAND	SAND	ASH					ASH		
RENAULT 18 TD Estate	TWEED	SAND	SAND	ASH					ASH		

\* Supergloss/metallic paint.  
Please consult your RENAULT Dealer for details of the current range of colours available.



# Renault produces the style Boutique adds the character.

There's no denying the Renault style which has been long admired by many. But Renault Boutique offers an extensive choice of accessories to satisfy your own personal style and add your own character.

With over 1,000 items to choose from it is possible to show only a few here but the range includes safety accessories like rear seat belts, leisure accessories like tow bars and roof racks, a range of car care and protective products and a superb range of in car entertainment.

And you can be sure that any Renault Boutique item is as reliable and stylish as the car it's made for.

## RENAULT

Renault recommend **elf** lubricants  
Renault U.K. Ltd.  
Western Avenue London W3 0RZ.

Renault UK Ltd. reserves the right to modify its models without notice including their characteristics, specifications, equipment and accessories. Brochures may inevitably become out of date or inaccurate in some respects in that such characteristics, equipment, specifications or accessories may be changed after the publication date given below and can differ from the descriptions given. It is therefore necessary to check with the salesman that the characteristics, specifications, equipment and accessories of the vehicle on order are as advertised. Matters contained in brochures are only intended to give the customer a general guide to the vehicle and should not be regarded as definitive terms.  
Publication date: 03/84

**Maintenance**

**Protection**

**Economy**

**Leisure**

**Safety & Security**

**Comfort**

