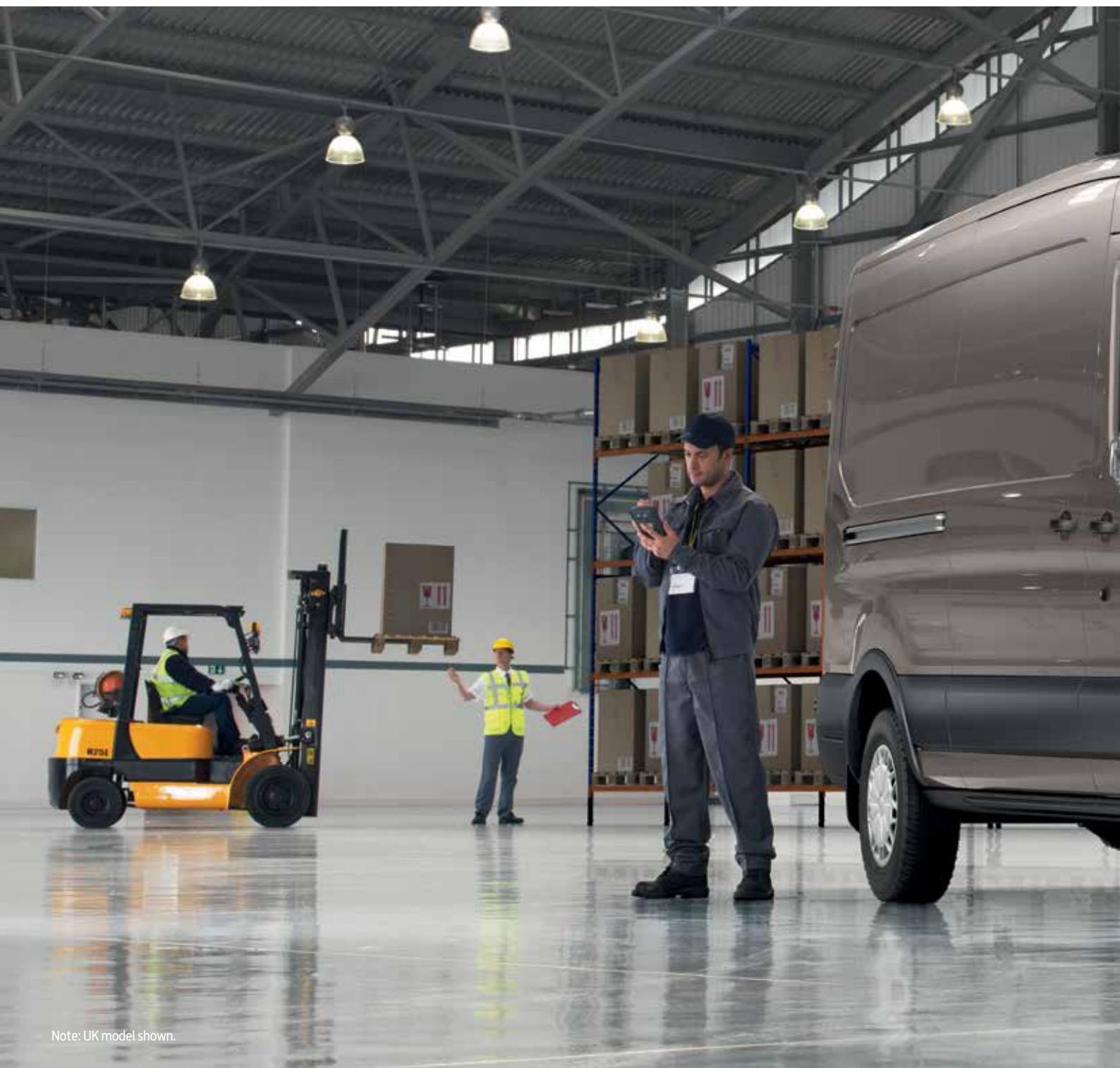


ALL-NEW TRANSIT RANGE





Note: UK model shown.

Repositioned tie-down points

New Ford **TRANSIT**'s DIN/ISO compliant tie-down hooks and fixing points are conveniently mounted on the side walls, leaving the floor clear and free from obstructions. (Standard)



No problem.

Combining high carrying capacity with dependable power and low fuel consumption, the new Ford **TRANSIT** has an insatiable appetite for hard work.



Enhanced cargo space

With more space, more convenience and greater practicality, the new Ford **TRANSIT** clearly means business. Offering up to 15.1 cubic metres of loadspace in the new 'Jumbo' Van, plus room for up to 5 Europallets, it cuts even the biggest jobs down to size.





Large body door mirrors

Standard-width door mirrors accommodate body sizes up to 2170 mm. Large blind-spot mirrors are incorporated for excellent visibility.

Anywhere you like.

With two frame lengths, a range of GVMs from 3,300 kg to 4,700 kg, and a choice of front-wheel drive and rear-wheel drive powertrain configurations, the new Ford **TRANSIT** is prepared for almost any challenge that comes its way.



Towing ability

Ford Transit's appetite for hard work extends beyond its loadspace. The **TRANSIT** Van and **TRANSIT** Single Cab Chassis versions with high-rated suspension and 7,000 kg gross train mass (GTM) can pull up to a maximum 3,500 kg tonnes of braked trailer load.



11.9 m turning circle*

The new Ford Transit feels surprisingly car-like to drive, with power-assisted steering, a class-leading 11.9 m turning circle* and excellent driver visibility, courtesy of the new larger windscreen and side windows.

*Measured kerb-to-kerb, 11.9 m MWB; 13.3 m LWB.



First-class comfort in every seat

The ability to remove rear seats to accommodate wheelchairs or provide extra luggage space, means Ford **TOURNEO** opens up a range of new possibilities. Inertia-reel seat belts are fitted to every seat.

Easy.

| A light and spacious interior with car-like levels of comfort and advanced, relevant technology. |
Ford **TOURNEO** successfully combines business with pleasure. |



Putting people first

Bigger, roomier and more versatile than ever, **TOURNEO** offers a choice of body lengths and seating configurations to carry up to 17 passengers plus the driver.





Tow with confidence

We condensed an equivalent of over 240 000km of extreme driving into a six-month test over different road conditions, most of which was spent towing a fully-laden trailer. The new Transit passed with full marks.

5 year perforation warranty

The new **TRANSIT** owes its durable exterior to a thorough multi-stage painting process. From the wax-injected steel body sections to the hard-wearing top coat, new materials and application processes ensure it will retain its good looks for many years to come.

Chassis design

Throughout the design process, Ford has worked closely with the bodybuilding industry to ensure that all standard body types, and most specialist conversions, can be fitted with little or no modification required.



The foundation for your business

Ford **TRANSIT** Chassis Cab combines the strength of a heavy truck with the agility of a light commercial vehicle to provide unbeatable support for your business.



Pushed to extremes

From frost-covered prototypes started up in -40°C at 4,500-metre altitudes, to sun-baked vehicles towing fully-laden trailers up long inclines in 50°C heat. The new **TRANSIT** has been pushed to extremes.



Obsessively driven

During its development, we test drove the new Transit the equivalent of 5 million kilometres, including 400 000 kilometres with real customers. It's a vehicle you can rely on, right down to the smallest ball bearing.

Engineered for durability. Tested for toughness.

Like every Ford commercial vehicle before it, the new **TRANSIT** has durability in its DNA. A relentless testing programme ensures that it's a vehicle built to last.

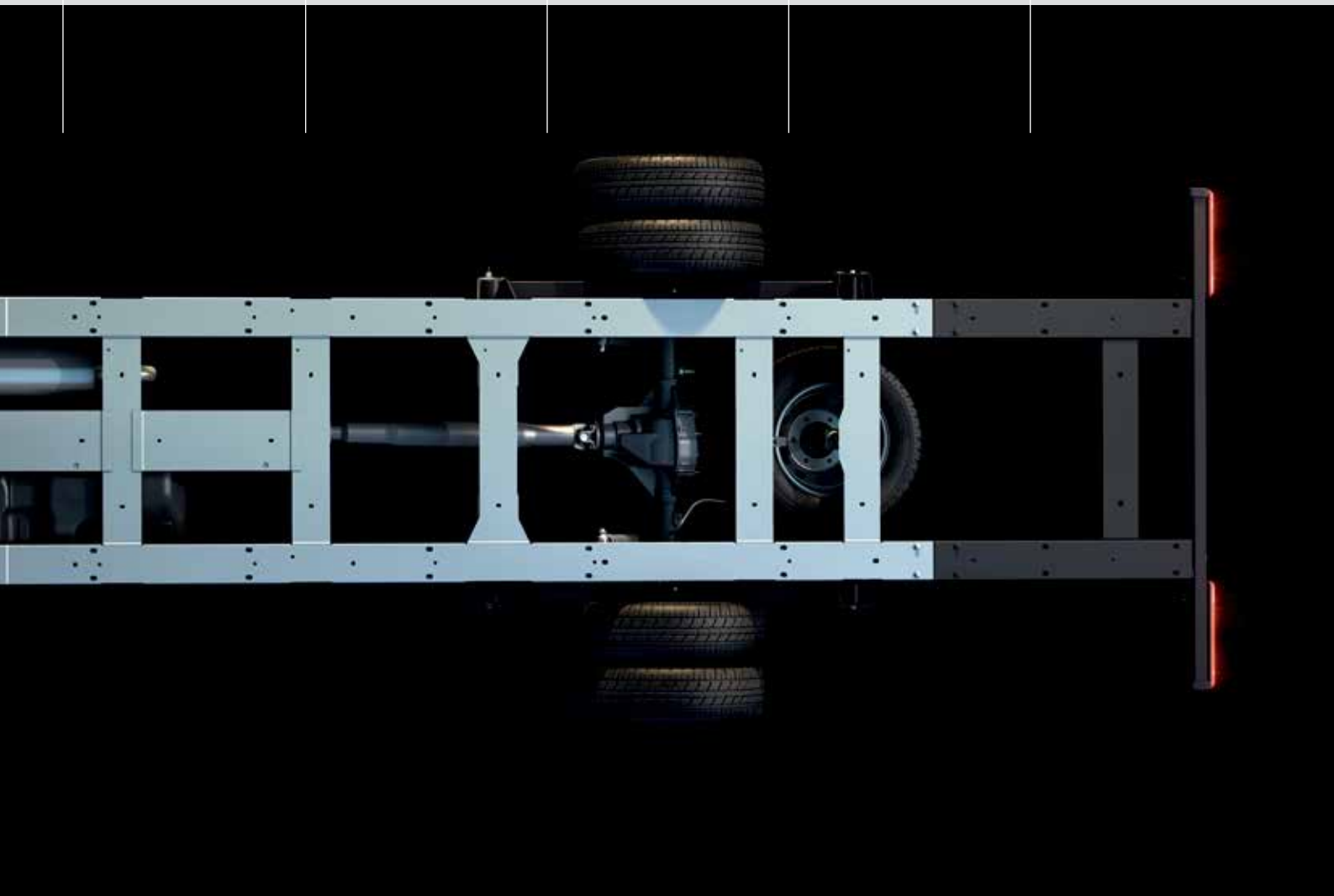
Wheelbase and overhang dimensions suitable for industry-standard body sizes.

Easy body mounting with integral mounting points and bolt-on rear frame overhangs, where required.

Higher centre of gravity suspension as standard, to cope with large bodywork.

Electrical connections for additional exterior lighting, where required.

Bolted closing member allows chassis length to be customised without welding.



Proven Duratorq TDCi diesel engine technology

Renowned for its reliability and efficiency, the new Transit's 2.2-litre Duratorq TDCi engine comes with a choice of three power and torque outputs to cater for all operational needs.



Heavy-duty headboard

Substantial all-steel powder-coated headboard provides protection to the cab and its occupants. Strong construction allows ladders and heavy items to be secured with ease. (Part of optional Float on Transit Single Chassis Cab)



Even better ride and handling

Ford **TRANSIT**'s renowned driving qualities have been fine-tuned with stiffer suspension mounting bushes and brackets, and a newly-designed anti-roll bar.



Note: UK model shown.

230-volt power socket

A handy 150 Watt 230V power socket, located between the driver's and passenger seats, can be used to charge tools, laptops or other electrical equipment without the need for special adaptors. (Optional on Tourneo and Transit Van)

Ready for work.

Your new **TRANSIT** is ready for work the moment you take delivery. Fully equipped inside and out, it offers all the right tools to make loading, unloading and managing your payload as easy as possible.



Loadspace lighting

New interior loadspace lights provide greater visibility when working inside the vehicle.



Load tie-downs

Pull-up load retention rings sit flush with the load platform when not in use. (Standard)

Ford Transit ECONetic

Reduce your running costs and CO₂ emissions with Transit ECONetic. Specially configured and powered by a uniquely calibrated 2.2-litre 92kW/350Nm, 100kW/350Nm and 114kW/385Nm Duratorq TDCi Stage V engines, and available with a choice of wheelbase lengths and GVMs, it delivers combined fuel economy figures that will satisfy the bottom line without compromising performance.



Note: UK model shown.

Why rear-wheel drive?

- Superior traction when heavily laden
- Best suited for heavier duty applications and towing

Why front-wheel drive?

- Larger loadspace, extra interior height and lower load height
- Lower kerbweight for greater payload and fuel efficiency

Power and torque

Transit's 2.2 Duratorq TDCi diesel engine is offered in three power and torque configurations, each driving through a 6-speed manual transmission.

Carries more, consumes less.

New **TRANSIT's** engines are among the most efficient available. Combining reduced fuel consumption with lower CO₂ emissions, you'll enjoy reduced running costs today and enhanced residual values tomorrow.



Ford ECONetic Technology

Ford ECONetic Technology combined with optimised aerodynamics has resulted in outstanding fuel economy across the range.

- Ford Duratorq TDCi advanced diesel engines – provide exceptional fuel economy and low CO₂ emissions.
- Ford Smart Regenerative Charging - maintains efficient battery charge levels which reduces overall fuel use.
- Economy – Gearshift Indicator light.
- Ford Eco Mode – encourages economical driving behaviour.

The availability of Ford ECONetic Technology varies by model. Please ask your Ford Transit Specialist Dealer for details.

For more information on our sustainability initiatives visit ford.com/go/sustainability.



CO₂
201g/km



*

CO₂ emissions

Transit ECONetic's low CO₂ emissions from just 201 g/km* deliver tax, fuel and environmental benefits.

*CO₂ and fuel economy: See back page.



Safe

Electronic Stability Programme (ESP)⁰¹⁾

ESP is designed to help you maintain control in extreme driving conditions. It senses when you are deviating from your chosen line and aims to keep you on track by automatically regulating braking and engine output.

Traction Control¹⁾

If wheel slip is detected at low speed, the system can distribute more torque to the wheel with most traction. (Standard)

Emergency Brake Assist⁰¹⁾

Designed to recognise an emergency braking situation and optimise the pressure within the braking system to provide maximum stopping power. (Standard)



Safety by design

Across the Ford **TRANSIT** range, a full line-up of passive and active safety features make use of the latest technology to protect you, your passengers and your cargo.

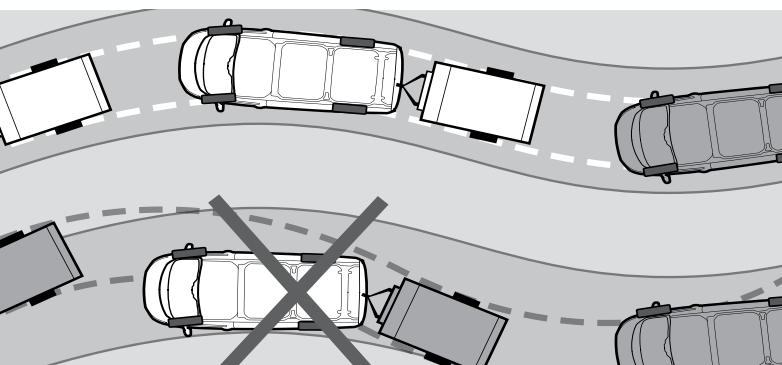
⁰⁾Uses sensors.

^{*}Operates at speeds over 65 km/h on multi-lane roads with clearly visible lane markings.

¹⁾Safety feature. ²⁾Driver assistance feature.

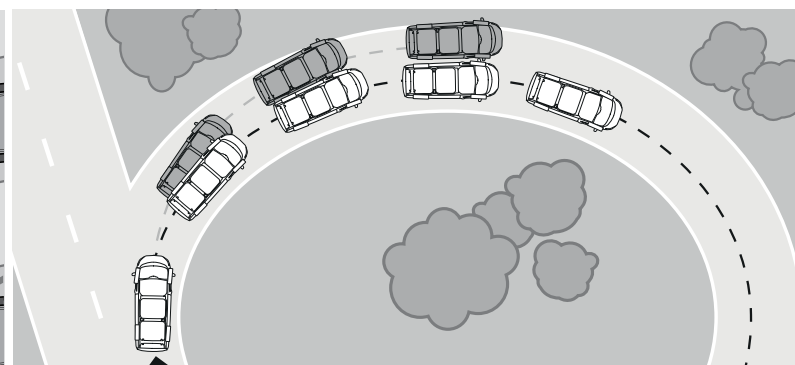
Drive-away locking²⁾

To prevent opportunistic crime, all doors automatically lock once the vehicle speed exceeds 8 km/h. The doors remain locked even if the vehicle slows or stops, although the driver or passenger locks can be released using the interior door handles. (Can be deactivated if required) (Standard)



Trailer Sway Control⁰¹⁾

When the system recognises that a towed trailer is starting to sway, it reduces engine torque and applies the brakes to lower the speed and help maintain stability. (Option, but standard with Ford factory-fit tow bar)



Curve Control⁰¹⁾

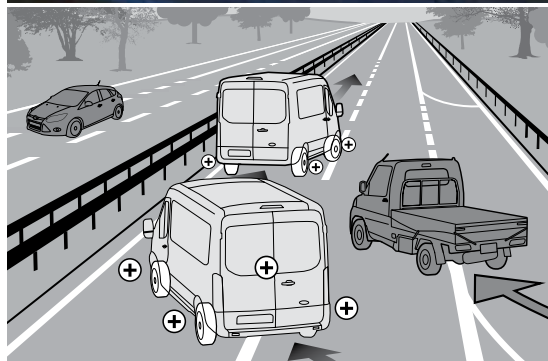
Designed to help you maintain control of the vehicle when taking a curve too quickly. The system can apply four-wheel smart braking to reduce vehicle speed by up to 10 mph in approximately one second. (Standard)

Big on loadspace, big on safety.

Safety is important to us, so the new **TRANSIT** is designed to help protect you, your load and those around you.

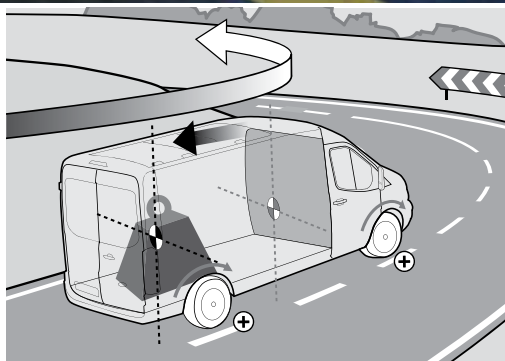
Emergency Brake Warning²⁾

Front and rear indicators automatically flash during heavy braking, giving other drivers advance hazard warning. (Standard)



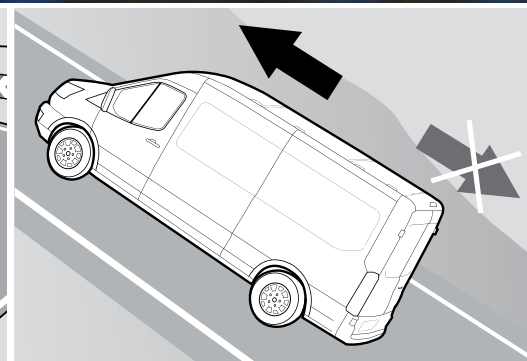
Roll-Over Mitigation¹⁾

Designed to identify a potentially dangerous driving situation and activate the ESP¹⁾ to maintain stability. (Standard)



Load Adaptive Control¹⁾

Designed to adjust the responses of the ESP¹⁾ system to compensate when the vehicle is unladen, partially- or fully-laden. (Standard)



Hill Launch Assist²⁾

Designed to temporarily prevent you from rolling down a slope when you move your foot from the brake pedal to the accelerator pedal. It works in forward and reverse gears, so is ideal for towing and pulling heavy loads. (Standard)

Optimised loadspace and payload

The new Ford **TRANSIT** delivers exceptional load capacity. Behind the fixed steel bulkhead, you'll find up to 15.1 cubic metres of cargo space to fill. The flat load floor and near vertical side walls help you make the most of all that space, with room to carry loads of up to 4217 mm in length and up to 2025 mm in height. Access to the load area is quick and easy too, thanks to a wide-opening sliding side door, full-height rear doors that can be opened to a full 270 degrees (standard on 'Jumbo') and a built-in rear bumper step.



Fold-out table and underseat stowage compartment

The front dual passenger seat features a fold-out table, dual cup holders and an underseat stowage compartment large enough to hold a toolbox. (Standard)



Overhead stowage system

TRANSIT is equipped with plenty of useful in-cab storage areas, including a new full-width overhead stowage shelf. (Standard)



Integrated rear bumper step

New rear bumper design incorporates an integral step for easy access to the loadspace. (Standard).

More efficient by design.

Combining high carrying capacity and maximum productivity, new **TRANSIT** has the answer to all your transport needs.

- 10 cubic metres to 15.1 cubic metres loadspace. Greater load cube allows more to be carried in a single journey for improved operating efficiency
- 3044 mm and 4217 mm load lengths. Increased load lengths can accommodate standard-length items, like pipes, building boards and carpet rolls
- Integrated rear bumper step provides easier loadspace access



Storage compartment with power point, AUX and USB ports above instrument cluster

Cleverly concealed storage compartment for safe stowage of items.



Parking distance sensors, front and rear

An audible warning helps you judge the distance between your vehicle and obstacles at the front and rear, for easier parking and manoeuvring. (Optional on Transit Van and Tourneo)

More seats mean more business

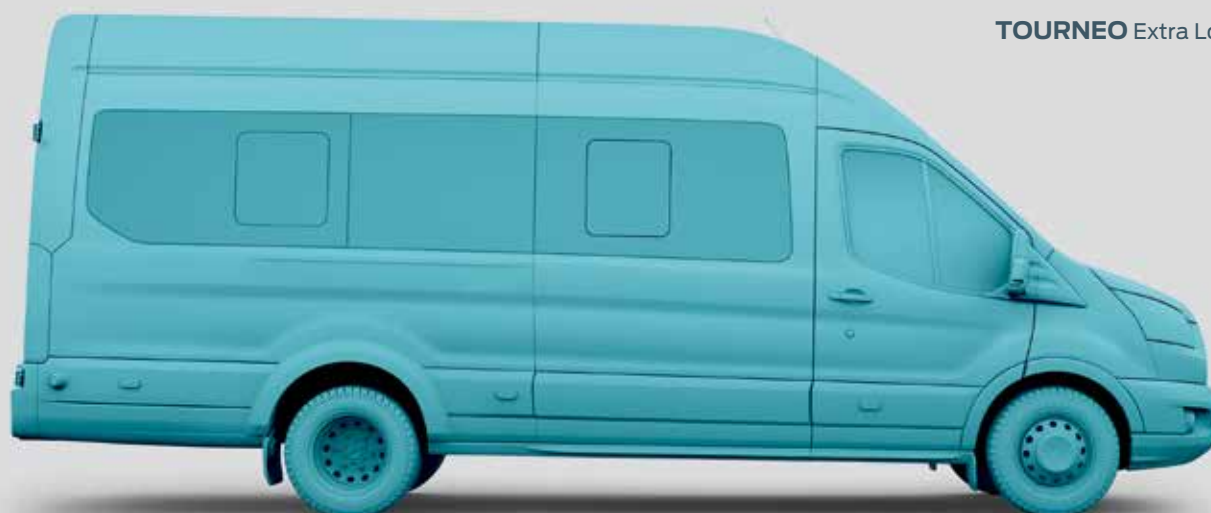
Powerful engines with enough torque to satisfy the most demanding business uses, space to carry up to seventeen passengers, plus the driver. Together they make the **TOURNEO** the vehicle of choice for a range of passenger-carrying businesses.



TOURNEO Medium Wheelbase

Medium Roof

12
seats



TOURNEO Extra Long Wheelbase

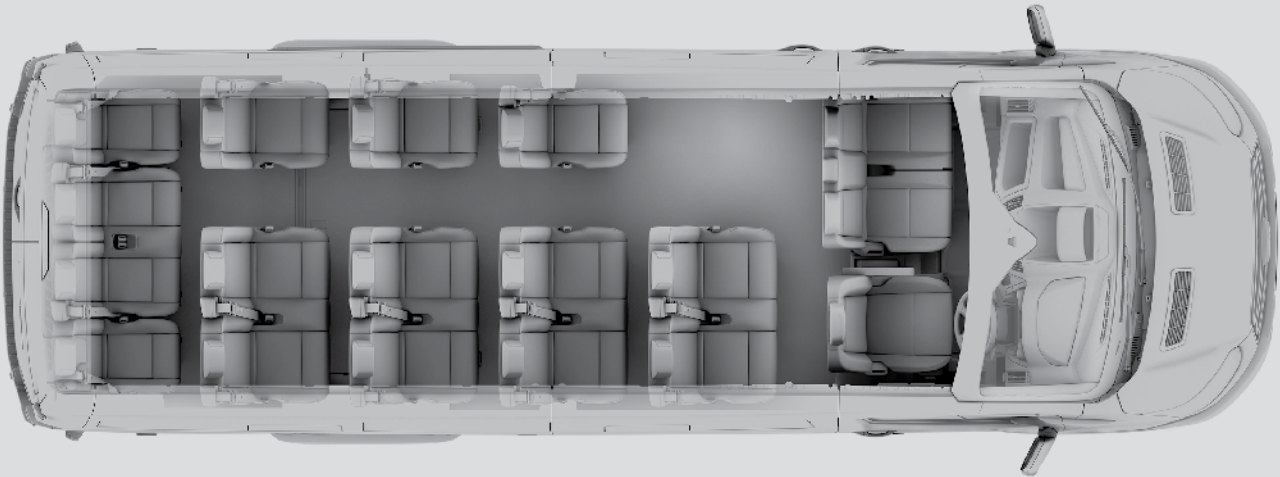
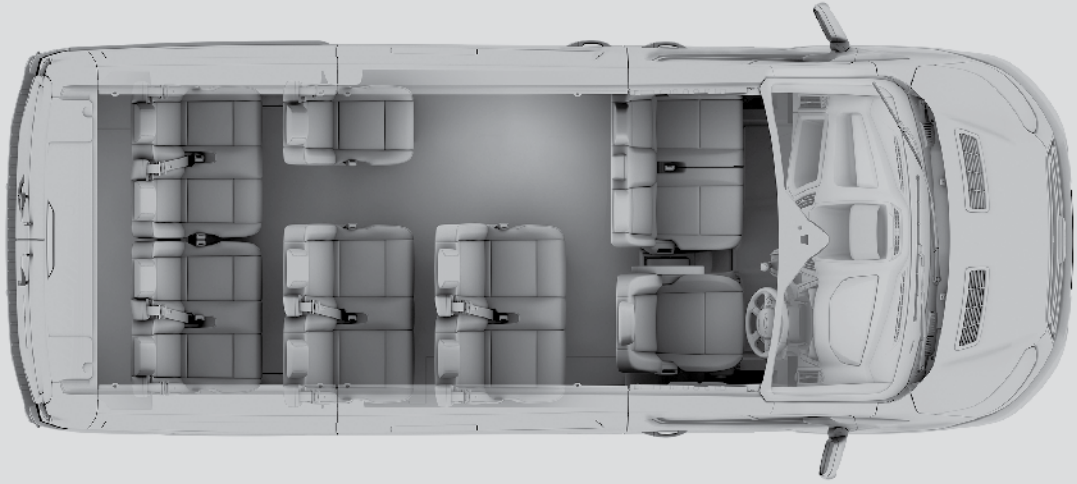
High Roof

18
seats



People power.

With the best possible choice of seating configurations, wheelbase lengths and powertrain options, new **TOURNEO** has what it takes to get the job done.



Bus

Interior features

- Trip computer
- Economy – Gearshift Indicator light
- Driver's 4-way seat adjust
- Rake- and reach-adjustable steering column
- Dual passenger seats with fold-out table and underseat stowage compartment
- Electronically-operated front windows
- Remote central locking
- Courtesy lights with theatre dimming
- Map-reading lights

Van

Interior features

- Easy-clean rubber floor covering in cab
- Courtesy lights with theatre dimming
- Trip computer
- Economy – Gearshift Indicator light
- Driver's 4-way seat adjust
- Rake- and reach-adjustable steering column
- Dual passenger seats with fold-out table and underseat stowage compartment
- Electronically-operated front windows
- Remote central locking
- Full steel bulkhead
- x10(MWB) - x12(LWB) DIN 75410 compliant tie-down loops

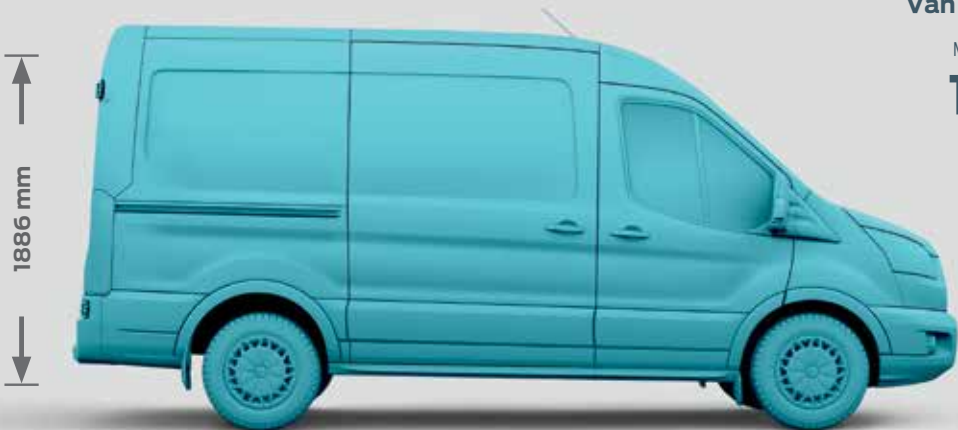
Chassis Cab

Interior features

- Easy-clean rubber floor covering in cab
- Courtesy lights with theatre dimming
- Trip computer
- Economy – Gearshift Indicator light
- Driver's 4-way seat adjust
- Rake- and reach-adjustable steering column
- Dual passenger seats with lift-up seat stowage
- Electronically-operated windows
- Remote central locking

Designed for hard work

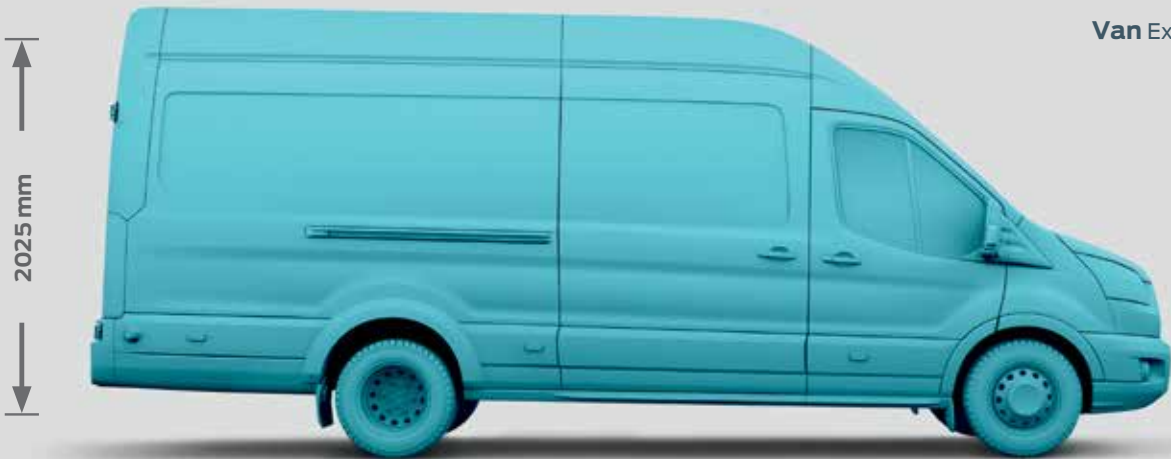
Whatever you need from a van, you'll find it in the new **TRANSIT**. Three load lengths, two roof heights, larger load volumes and higher gross vehicle masses. Plus a choice of driveline configurations on selected models.



Van Medium Wheelbase

Medium Roof (H2) FWD/RWD

10.1/9.6
cu.m



Van Extra Long Wheelbase

High Roof (H3) FWD/RWD

15.1
cu.m

*Measured in cubic metres
and with a full bulkhead
fitted.

Chassis Cab Medium Wheelbase

Single rear wheel/Dual rear wheel
FWD/RWD
Chassis frame length 3144 mm

3300
(kg) GVM



Chassis Cab Extra Long Wheelbase

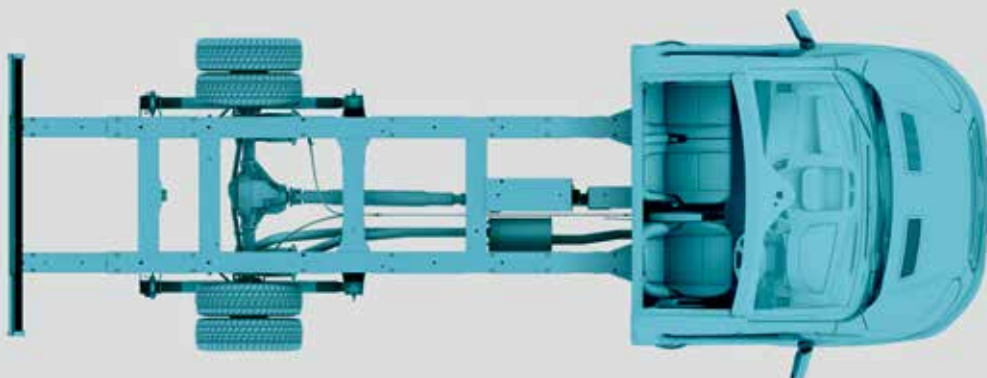
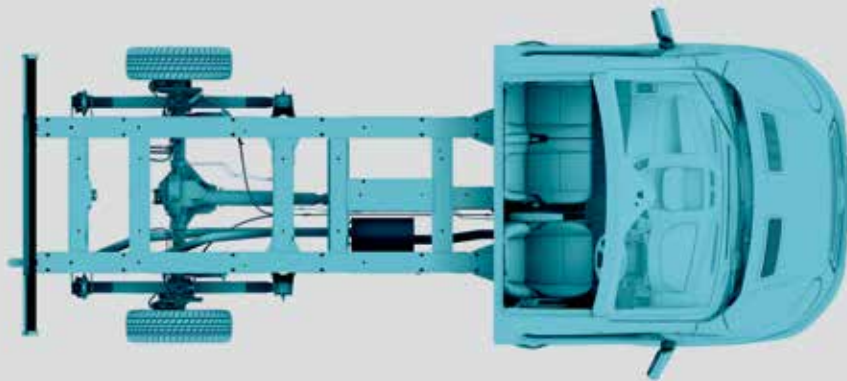
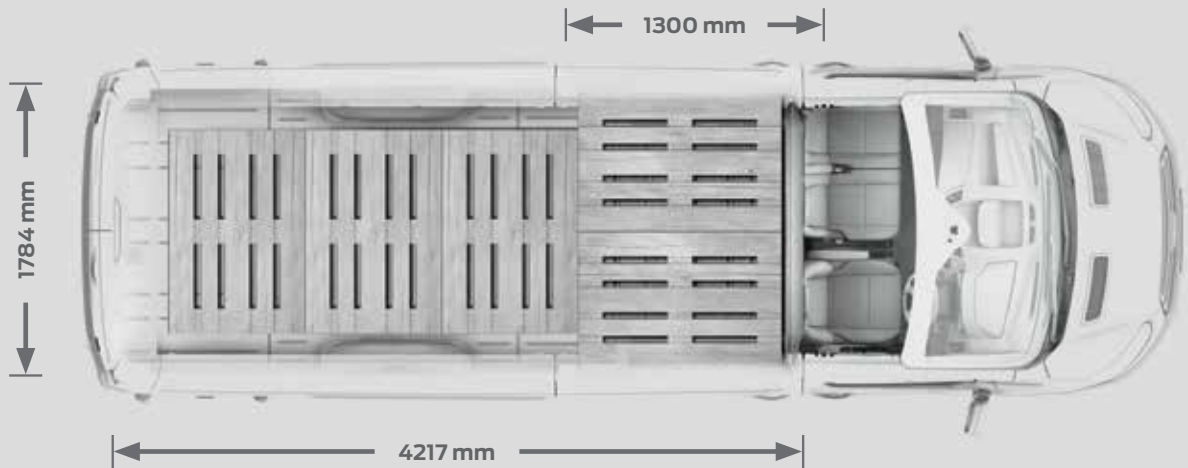
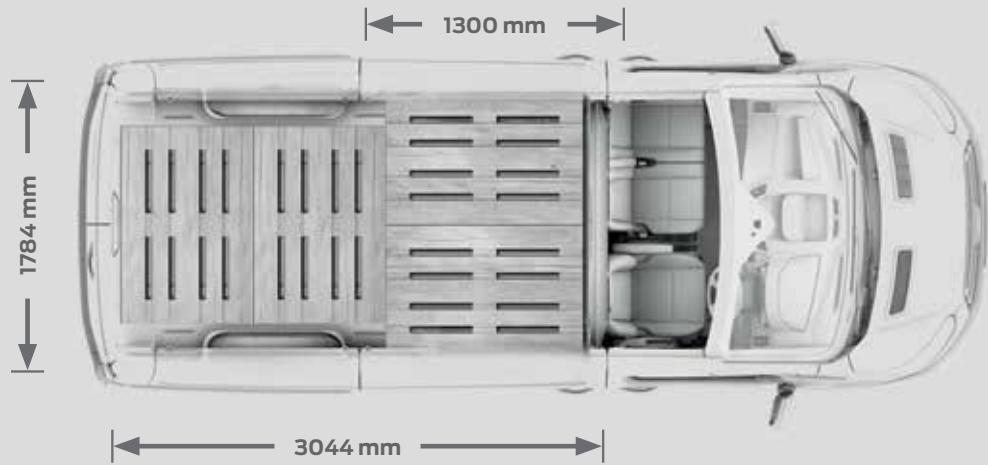
Single rear wheel/Dual rear wheel
FWD/RWD (AWD available on 350 series)
Chassis frame length 4151 mm

4700
(kg) GVM



The ideal van for every job.

With such a wide range of wheelbases, load volumes, payloads and powertrains, new **TRANSIT** has what it takes to get the job done.



Colour and trim.

| Choose the colour and trim that you think best reflects your business. |



Stratosphere
(Metallic*)



Blazer Blue
(Solid)



Deep Impact Blue
(Metallic*)



Frozen White
(Solid)



Moondust Silver
(Metallic*)



Tectonic Silver
(Metallic*)



Lunar Sky
(Metallic*)



Race Red
(Solid)



Midnight Sky
(Metallic*)



Panther Black
(Metallic*)

*Metallic body colours are optional, at extra cost.

Colours applicable to Transit Van, Tourneo and Transit Single Cab Chassis.

Note: The images used are to illustrate body colours only and may not reflect the vehicle described. Colours and trims reproduced within this brochure may vary from the actual colours, due to the limitations of the printing processes used.

Ambiente – Transit Van, Tourneo and Transit Single Cab Chassis.

Max seat bolsters in Charcoal Black

Traxon seat insert in Charcoal Black

BUS		
	2.2L Diesel (350M)	2.2L Diesel (460E)
ENGINE		
Type	Duratorq TDCi 2.2	Duratorq TDCi 2.2
Cylinders	4 in line	4 in line
Displacement (cm³)	2198	2198
Power (kW @ rpm)	100kW	100kW
Torque (Nm @ rpm)	350Nm	350Nm
Fuel Requirement	Diesel	Diesel
Diesel particulate filter	Std	Std
TRANSMISSION		
Type	6-speed manual	6-speed manual
Final Drive	3,31	3,31
PERFORMANCE		
Fuel Economy - NEDC l/100km (combined cycle)	8,2	8,2
CO2 Emission	217	217
STEERING		
Type: Rack & Pinion with rack-mounted Power assisted	Std	Std
Turning circle (kerb-to-kerb) (m)	11,9	13,3
SUSPENSION		
Front:Independent MacPherson struts, variable rate coil springs, stabiliser bar and gas pressurised shock absorbers	Std	Std
Rear suspension: Single leaf springs, gas pressurised shock absorbers	Std	Std
BRAKES		
Front Ventilated Discs	Std	Std
Rear Solid Discs	Std	Std
ESP with failed boost support	Std	Std
Emergency brake warning	Std	Std
ABS with EBD	Std	Std
EBA (emergency brake assist)	Std	Std
WHEELS AND TYRES		
235/65 R16C - STEEL	Std	-
195/75 R16C - STEEL- (Dual Rear Wheel)	-	Std
Hub caps	Std	Std
DIMENSIONS (mm) - EXTERIOR		
Overall length	5531	6703
Overall width - with mirrors	2474	2474
Wheel base	3300	3750
Sliding door width	1200	1200
Sliding door height	1564	1564
Rear door width	1565	1565
Rear door height	1597	1836
Load floor to roof	1718	1955
Front Track	1732	1740
Rear Track (SRW)	1743	-
Rear Track (DRW)	-	1670
DIMENSIONS - OTHER		
Gross Vehicle Mass [GVM, kg]	3500	4600
Gross Combined Mass	3500	5350
80 l Fuel Tank	Std	Std
Kerb weight (kg)	2467	2913
Gross Payload	954	1605
Towing Mass [Braked, (kg)]	750	750
Towing Mass [Unbraked, (kg)]	TBA	2200
SAFETY & SECURITY		
Driver and Front passenger airbag	Std	Std
Anti-lock brake system (ABS)	Std	Std
Electronic brakeforce distribution (EBD)	Std	Std
Electronic stability programme (ESP)	Std	Std
Hill launch assist (HLA)	Std	Std
Traction control	Std	Std
Roll-over mitigation (ROM)	Std	Std
Centre high-mounted rear stop lamp	Std	Std
Power door dead locks - shielded	Std	Std
Door entry remote-multi channel - (rechargeable - (1 fob + 1 plain key))	Std	Std
Door mounted rear doors lock/unlock switch	Std	Std
Drive away locking with crash unlocking	Std	Std
Door auto-relocking enabled - (45 seconds conditional)	Std	Std
Two-stage unlocking with configurable unlocking - config 1	Std	Std
Perimeter anti-theft alarm	Std	Std

The declared fuel consumption and CO₂ emission figures were achieved during technical laboratory testing in accordance with the legislated technical specifications (SANS 20101: 2006 / ECE R101: 2005). Fuel consumption and CO₂ emissions figures are used to compare different vehicle types under uniform conditions and are not necessarily indicative of real-life driving conditions. Note that the actual fuel consumption and emissions levels will depend on many factors including your individual driving habits, prevailing conditions and your vehicles equipment, condition and use.



	BUS	
	2.2L Diesel (350M)	2.2L Diesel (460E)
INTERIOR		
3 x 12V, 60 Amp connections located on driver seat pedestal.	Std	Std
Standard cloth seats	12	18
Seat Configuration A	Std	Std
Single driver seat & Dual passenger seat (3)		
2nd row: Dual seat (2)		
3rd row: Dual seat & Single seat (3)		
4th row: 2x Dual seat (4)		
Seat Configuration B		Std
Single driver seat& dual passenger seat (3)		
2nd row: Dual seat (2)		
3rd row: Dual seat & single seat (3)		
4th row: Dual seat & single seat (3)		
5th row: Dual seat & single seat (3)		
6th row: 2x Single seat & Dual seat in centre (4)		
Driver seat with 4-way manual adjustments and cushion tilt (fore/aft/rec/up/dwn/tilt)	Std	Std
2-way manual dual passenger seat (with split lift up seat cushion)	Std	Std
OCCUPANT RESTRAINTS		
Front seatbelt pretensioner - driver	Std	Std
Front 3 point seat belts (load limiters on outer seats/single seats, grabber on centre seat on dual pass)	Std	Std
Rear generation seat belts	Std	Std
WINDOWS		
Power 1 shot up/down driver & power pass front window	Std	Std
Sliding 2nd row window	Std	Std
Fixed 3rd row window	Std	Std
Sliding fourth row window	-	Std
Flip open 4th row window	Std	-
Partial Floor Cover - Rubber Insulated Easy-Clean (Or Similar)	Std	Std
IN CAR ENTERTAINMENT (ICE)		
Radio	Std	-
USB	Std	Std
Bluetooth	Std	Std
2 Front Speakers + 2 Woofers + 2 Tweeters	Std	Std
Single AM/FM antenna	Std	Std
Radio Controls on Steering Wheel	Std	Std
Aux Input Jack	Std	Std
Microphone	Std	Std
INTERIOR LIGHTING		
Courtesy lights – Header-mounted, front with theatre dimming	Std	Std
Rear compartment lights	Std	Std
EXTERIOR		
Single side load door with Emergency Release Hammer	Std	Std
Rear doors: 180º opening	Std	-
Rear doors: 270º opening (inc magnetic door retainers)	-	Std
Headlights – Projector-style halogen reflector lights(Quad Beam)	Std	Std
Manual Headlamp levelling	Std	Std
Follow-me-home lighting	Std	Std
Ford PROTECT		
Service intervals	15 000km	15 000km
Service Plan	Dealer Option	Dealer Option
Roadside Assistance	3 yr/unlimited km	3 yr/unlimited km
Comprehensive Warranty	4 yr/120 000km	4yr/120 000 km
Corrosion Warranty	5 yr/unlimited km	5 yr/unlimited km
BUS OPTIONS - AVAILABLE AT EXTRA COST		
BUS OPTION 1		
Trailer Tow attachments including(Trailer Stability Control, Trailer Brake Controller)	OPTIONAL	OPTIONAL
BUS OPTION 2		
Power equipment pack (Includes Manual Front & Rear Airconditioning , Heavy Duty Alternator, Power Converter)	OPTIONAL	OPTIONAL
BUS OPTION 3		
Rear View Camera with front and rear park sensors	OPTIONAL	OPTIONAL



TRANSIT VAN

Van		
2.2L Diesel (350M)		
2.2L Diesel (460E)		
ENGINE		
Type	Duratorq TDCi 2.2	Duratorq TDCi 2.2
Cylinders	4 in line	4 in line
Displacement (cm³)	2198	2198
Power (kW @ rpm)	92kW	114kW
Torque (Nm @ rpm)	350Nm	385Nm
Fuel Requirement	Diesel	Diesel
Diesel particulate filter	Std	Std
TRANSMISSION		
Type	6-speed manual	6-speed manual
Final Drive	4,71	4,10
PERFORMANCE		
Fuel Economy - NEDC l/100km (combined cycle)	7,6	9,3
CO2 Emission	201	244
STEERING		
Type: Rack & Pinion with rack-mounted power assisted	Std	Std
Turning circle (kerb-to-kerb) (m)	11,9	13,3
SUSPENSION		
Front:Independent MacPherson struts, variable rate coil springs, stabiliser bar and gas pressurised shock absorbers	Std	Std
Rear suspension: Single leaf springs, gas pressurised shock absorbers	Std	Std
BRAKES		
Front Ventilated Discs	Std	Std
Rear Solid Discs	Std	Std
ESP with failed boost support	Std	Std
Emergency Brake Warning	Std	Std
ABS with EBD	Std	Std
EBA (Emergency Brake Assist)	Std	Std
WHEELS AND TYRES		
235/65 R16C - STEEL	Std	-
195/75 R16C - STEEL- (Dual Rear Wheel)	-	Std
Hub Caps	Std	Std
DIMENSIONS (mm) - EXTERIOR		
Overall length	5530	6704
Overall width - with mirrors	2474	2474
Wheel base	3300	3750
Sliding door width	1300	1300
Sliding door height	1700	1600
Rear door width	1565	1565
Rear door height	1748	1887
Front Track	1732	1740
Rear Track (SRW)	1743	-
Rear Track (DRW)	-	1670
SAFETY & SECURITY		
Driver Airbag	Std	Std
Anti-lock Brake System (ABS)	Std	Std
Electronic Brakeforce Distribution (EBD)	Std	Std
Electronic Stability Programme (ESP)	Std	Std
Hill Launch Assist (HLA)	Std	Std
Traction Control	Std	Std
Roll-Over Mitigation (ROM)	Std	Std
Centre high-mounted rear stop lamp	Std	Std
Power door dead locks - shielded	Std	Std
Door entry remote - multi channel - (rechargeable - (1 Fob + 1 plain key)	Std	Std
Door mounted rear doors lock/unlock switch	Std	Std
Drive Away Locking with Crash Unlocking	Std	Std
Door auto-relocking enabled - (45 seconds conditional)	Std	Std
Two-stage unlocking with configurable unlocking config 1	Std	Std
Perimeter Anti-Theft Alarm	Std	Std

The declared fuel consumption and CO₂ emission figures were achieved during technical laboratory testing in accordance with the legislated technical specifications (SANS 20101: 2006 / ECE R101: 2005). Fuel consumption and CO₂ emissions figures are used to compare different vehicle types under uniform conditions and are not necessarily indicative of real-life driving conditions. Note that the actual fuel consumption and emissions levels will depend on many factors including your individual driving habits, prevailing conditions and your vehicles equipment, condition and use.



TRANSIT VAN

Van		
	2.2L Diesel (350M)	2.2L Diesel (460E)
INTERIOR		
2 x 12V connections	Std	Std
Standard cloth seats	Std	Std
Front Driver 3-point seat belt with pretensioners	Std	Std
Front Passenger 3-point seat belts with load limiter	Std	Std
Windows – Electrically-operated front with one-touch lowering on driver's side	Std	Std
Partial Floor Cover - Rubber Insulated Easy-Clean (or similar)	Std	Std
IN CAR ENTERTAINMENT (ICE)		
Radio	Std	Std
USB	Std	Std
Bluetooth	Std	Std
2 Front Speakers + 2 Woofers + 2 Tweeters	Std	Std
Single AM/FM antenna	Std	Std
Radio Controls on Steering Wheel	Std	Std
Aux Input Jack	Std	Std
Microphone	Std	Std
EXTERIOR		
Rear cargo doors: 180º opening	Std	-
Rear cargo doors: 270º opening (Inc magnetic door retainers)	-	Std
Headlights – Projector-style halogen reflector lights(Quad Beam)	Std	Std
Manual Headlamp levelling	Std	Std
Follow-me-home lighting	Std	Std
LOAD SPACE		
Load Space Lighting	Std	Std
Tie Down Hooks	10	12
Ford PROTECT		
Service Intervals	15 000km	15 000km
Service Plan	Dealer Option	Dealer Option
Roadside Assistance	3 yr/unlimited km	3 yr/unlimited km
Comprehensive Warranty	4 yr/120 000km	4yr/120 000 km
Corrosion Warranty	5 yr/unlimited km	5 yr/unlimited km
VAN OPTIONS - AVAILABLE AT EXTRA COST		
VAN OPTION 1		
Trailer Tow Attachment including Trailer sway module	OPTIONAL	OPTIONAL
Trailer Brake Controller		
VAN OPTION 2		
Air conditioning – Front Manual	OPTIONAL	-
VAN OPTION 3A		
Rear View Camera with front and rear park sensors	OPTIONAL	OPTIONAL
VAN OPTION 3B		
Power equipment pack (Includes Manual Front Airconditioning , Heavy Duty Altenator, Power Converter)	-	OPTIONAL



TRANSIT CHASSIS CAB

Chassis Cab		
	2.2L Diesel (350M)	2.2L Diesel (460E)
ENGINE		
Type	Duratorq TDCi 2.2	Duratorq TDCi 2.2
Cylinders	4 in line	4 in line
Displacement (cm³)	2198	2198
Power (kW @ rpm)	92kW	114kW
Torque (Nm @ rpm)	350Nm	385Nm
Fuel requirement	Diesel	Diesel
Diesel particulate filter	Std	Std
TRANSMISSION		
Type	6-speed manual	6-speed manual
Final Drive	4,71	4,10
PERFORMANCE		
Fuel Economy - NEDC l/100km (combined cycle)	7,6	9,3
CO2 Emission	201	244
STEERING		
Type: Rack & Pinion with rack-mounted Power assisted	Std	Std
Turning circle (kerb-to-kerb) (m)	12,5	13,3
SUSPENSION		
Front:Independent MacPherson struts, variable rate coil springs, stabiliser bar and gas pressurised shock absorbers	Std	Std
Rear suspension: Single leaf springs, gas pressurised shock absorbers	Std	Std
BRAKES		
Front Ventilated Discs	Std	Std
Rear Solid Discs	Std	Std
ESP with failed boost support	Std	Std
Emergency brake warning	Std	Std
ABS with EBD	Std	Std
EBA (Emergency Brake Assist)	Std	Std
WHEELS AND TYRES		
235/65 R16C - STEEL	Std	-
195/75 R16C - STEEL- (Dual Rear Wheel)	-	Std
Hub Caps	-	Std
DIMENSIONS (mm) - EXTERIOR		
Overall length (w/o float)	5572	6579
Overall length (w float)	5767	6797
Overall width (w/o float) DRW with mirrors	2474	2474
Wheel base	3504	3954
Front track	1732	1740
Rear track (SRW)	1743	-
Rear track (DRW)	-	1670
DIMENSIONS - OTHER		
Gross Vehicle Mass [GVM, kg]	3300	4700
Gross Combined Mass	5000	7000
80ℓ Fuel Tank	Std	Std
Kerb weight (kg)	1628	1934
Gross Payload without Float	1597	2691
Towing Mass [Braked, (kg)]	750	750
Towing Mass [Unbraked, (kg)]	2800	3500
SAFETY AND SECURITY		
Driver Airbag	Std	Std
Anti-lock Brake System (ABS)	Std	Std
Electronic Brakeforce Distribution (EBD)	Std	Std
Electronic Stability Programme (ESP)	Std	Std
Hill Launch Assist (HLA)	Std	Std
Traction Control	Std	Std
Roll-Over Mitigation (ROM)	Std	Std
Power door dead locks - shielded	Std	Std
Door entry remote - multi channel - (rechargeble - (1 fob + plain key)	Std	Std
Drive Away Locking with Crash Unlocking	Std	Std
Door auto-relocking enabled - (45 seconds conditional)	Std	Std
Perimeter Anti-Theft Alarm	Std	Std

The declared fuel consumption and CO₂ emission figures were achieved during technical laboratory testing in accordance with the legislated technical specifications (SANS 20101: 2006 / ECE R101: 2005). Fuel consumption and CO₂ emissions figures are used to compare different vehicle types under uniform conditions and are not necessarily indicative of real-life driving conditions. Note that the actual fuel consumption and emissions levels will depend on many factors including your individual driving habits, prevailing conditions and your vehicles equipment, condition and use.



TRANSIT CHASSIS CAB

	Chassis Cab	
	2.2L Diesel (350M)	2.2L Diesel (460E)
INTERIOR		
2 x 12V connections	Std	Std
Partial Floor Cover – Rubber Insulated Easy-Clean (or similar)	Std	Std
IN CAR ENTERTAINMENT (ICE)		
Radio	Std	Std
USB	Std	Std
Bluetooth	Std	Std
2 Front Speakers + 2 Tweeters	Std	Std
Single AM/FM antenna	Std	Std
Radio Controls on Steering Wheel	Std	Std
Aux Input Jack	Std	Std
Microphone	Std	Std
EXTERIOR		
Side marker lamps	Std	Std
Door handles -Self colour (black)	Std	Std
Front bumper – Partial Body colour	Std	Std
Rear bumper underrun bar	Std	Std
Grill - Self colour	Std	Std
Rear mud flaps	Std	Std
Wipers – Front, variable/intermittent with electric wash	Std	Std
Orange turn indicators	-	Std
Clear turn indicators	Std	-
Roof mounted light	-	Std
Headlights – Projector-style halogen reflector lights (Quad Beam)	Std	Std
Manual Headlamp levelling	Std	Std
Follow-me-home lighting	Std	Std
Ford PROTECT		
Service intervals	15 000km	15 000km
Service Plan	Dealer Option	Dealer Option
Roadside Assistance	3 yr/unlimited km	3 yr/unlimited km
Comprehensive Warranty	4 yr/120 000km	4yr/120 000 km
Corrosion Warranty	5 yr/unlimited km	5 yr/unlimited km
CHASSIS OPTIONS - AVAILABLE AT EXTRA COST		
CHASSIS OPTION 1		
Standard Aluminium wide float	OPTIONAL	OPTIONAL
CHASSIS OPTION 2		
Air conditioning – Front Manual	OPTIONAL	OPTIONAL
CHASSIS OPTION 3		
Passenger Airbag	OPTIONAL	OPTIONAL

Ford may, subject to all applicable laws, discontinue or change features and other specifications either temporarily or permanently, which changes will be communicated to the Ford Dealer Network.

Consult the vehicle handbook, www.ford.co.za or your nearest Ford dealer for more information regarding Ford **Protect** plans and products. Printed August 2014.



TRANSIT CONNECT coming 2015



FORD CREDIT

As part of the Ford family, FORD **CREDIT** can offer a number of unique finance options to make owning a new or used vehicle affordable and simple. For more information regarding FORD **CREDIT**, speak to your Ford Dealer or go to www.ford.co.za/buying/ford-credit/home.



| FORD CREDIT

FORD PROTECT

Genuine parts. Genuine service.

Enjoy years of trouble-free motoring and preserve the value of your new Ford by fitting only genuine Ford parts and accessories. Servicing your new Ford at a Ford Dealer will also protect you and your vehicle warranty.



| FORD PROTECT

Business and Commercial Fleet Customers.

The Ford portfolio of products is growing rapidly to meet your business needs.

Please contact your local Ford Dealer for more information
or visit our website www.ford.co.za/fleet
or alternatively email us at fleetsa@ford.com

Ford Protect

Ford **Protect** offers a holistic suite of service, maintenance, warranty and roadside-assistance products aimed at keeping your new **TRANSIT Van**, **TRANSIT Single Chassis Cab** and **TOURNEO** in perfect working condition.

New Vehicle Warranty – Every new **TRANSIT Van**, **TRANSIT Single Chassis Cab** and **TOURNEO** comes with a 4yr/120 000km Comprehensive Warranty.

Corrosion Warranty – Cover lasts for 5yr/unlimited km.

Roadside Assistance – Cover lasts for 3yr/unlimited km for mechanical, electrical, flat tyres, batteries, medical emergencies and towing, if needed, to the nearest Ford dealership.

New Vehicle Extended Warranty – An Extended Warranty may be purchased prior to the expiry of the 4yr/120 000km New Vehicle Warranty, giving owners an extra 2yr/80 000km of worry-free driving.

Consult the vehicle handbook, Ford Dealer or www.ford.co.za for more info regarding Ford **Protect** plans.

CO₂ & Fuel Economy Note: The declared fuel consumption and CO₂ emissions figures were achieved during technical laboratory testing in accordance with the legislated technical specifications (SANS 20101: 2006 / ECE R101: 2005). Fuel consumption and CO₂ emissions figures are used to compare different vehicle types under uniform conditions and are not necessarily indicative of real-life driving conditions. Note that the actual fuel consumption and emissions levels will depend on many factors including individual driving habits, prevailing conditions and vehicle equipment, condition and use.



Quality

We design and build your Ford to feel as good after many years of service as it did the day you picked it up. And to drive just as beautifully too.



Green

Using advanced Ford technology, we're committed to creating vehicles with improved fuel economy, reduced CO₂ emissions and a lower overall cost of ownership.



Safe

Ford's Intelligent Protection System uses sophisticated technology designed to help prevent an accident and, if one should happen, to protect you.



Smart

Vehicles with smart intuitive technologies designed to connect your world and many clever solutions from Ford that make life a little easier.

