

first-class

for any occasion



AN SUV FOR EVERY ROAD YOU TRAVEL

Whether your life takes you exploring the open road or the elegant shops of 5th Avenue, the 2003 Mercedes-Benz M-Class is **an ever-ready companion**. From the new, more powerful ML 350 to the thrilling ML 55 AMG to the elegant new Inspiration Editions, the M-Class stands out as an SUV that will carry you in true **Mercedes-Benz sophistication, comfort and safety**, even though it's not the least bit afraid to get a little dirt under its tread.

Every M-Class is designed with versatility as a priority, with standard full-time 4-wheel drive and variable interior configurations. And like every Mercedes-Benz, the M-Class is a **proven value** leader in its class, packed with unexpected features and innovations, and with the **quality and durability** the world expects from the Three-Pointed Star. Some people get all the adventure they need by going to a four-star restaurant, others like to take the roads less traveled. For both types of exploration – or any road you choose – Mercedes-Benz builds the M-Class.

The 2003 M-Class offers you plenty of choices. Among them, paved or unpaved.



ML 500 shown at top with optional Bi-Xenon headlamps with washers and Sunroof Package. ML 350 shown at right with optional Sunroof and Luxury Packages.

expert

ML 350

3.7-liter 18-valve V-6
232 hp @ 5,750 rpm
254 lb-ft torque @ 3,000-4,500 rpm

ML 350 shown with optional Sunroof and Luxury Packages.

SPORT, STYLE AND SUBSTANCE

If the new ML 350 can make this scene seem as easy as a relaxing Sunday drive, imagine how the rest of the week could be. The ML 350 is **capable on-road as it is off-road**, thanks to a potent new 232-hp V-6 and terrain-tackling **full-time 4-wheel drive**. The handsome design gives you a commanding view, while its 4-wheel independent suspension and **driver-adaptive 5-speed automatic transmission** put the road at your command. The ML 350's standard 17" alloy wheels, performance tires and ESP

(Electronic Stability Program) add even more confidence to your drive. Being a Mercedes, safety-engineering leadership comes standard, including such SUV firsts as our **emergency-sensing Brake Assist** and **eight air bags** — including four side-impact air bags and dual Head Protection Curtains. Plus, it's a versatile value, loaded with features and amenities, like a **richly appointed, wood-trimmed interior** that offers comfort and convenience you might not expect at the ML 350's price.

Born a leader, still a leader: The M-Class made its debut as *Motor Trend's* 1998 "Truck of the Year," an honor that's been reinforced over time.

dynamic

PREMIUM PERFORMANCE

The chrome-ribbed grille, chrome-highlighted door handles, and the rear privacy glass all signal a **very powerful presence** – that of the awesome Mercedes-Benz ML 500. This super-ute's self-assured **288-hp 5.0-liter V-8** thrusts the ML 500 from **zero to 60 in a mere 7.7 seconds.**¹ Bigger, more powerful brakes and high-performance tires² mounted on 6-spoke 17" aluminum-alloy wheels boost the ML 500's place in the upper regions of sport utility vehicles even further.

Inside, the ML 500 is a palace. The **onboard navigation** system now uses **DVD technology** and GPS satellites to make adventure even more inviting.³ Accommodations include **heated 8-way power front seats** and **supple leather upholstery** throughout. The **hand-finished burl walnut** trim extends to the shift knob, the rolltop cover for the center-console cupholder, and the rear climate control panel. Such pleasure, combined with such power and precision, makes the ML 500 a **true enthusiast's SUV.**

ML 500

5.0-liter 24-valve V-8

288 hp @ 5,600 rpm

325 lb-ft torque @ 2,700–4,250 rpm

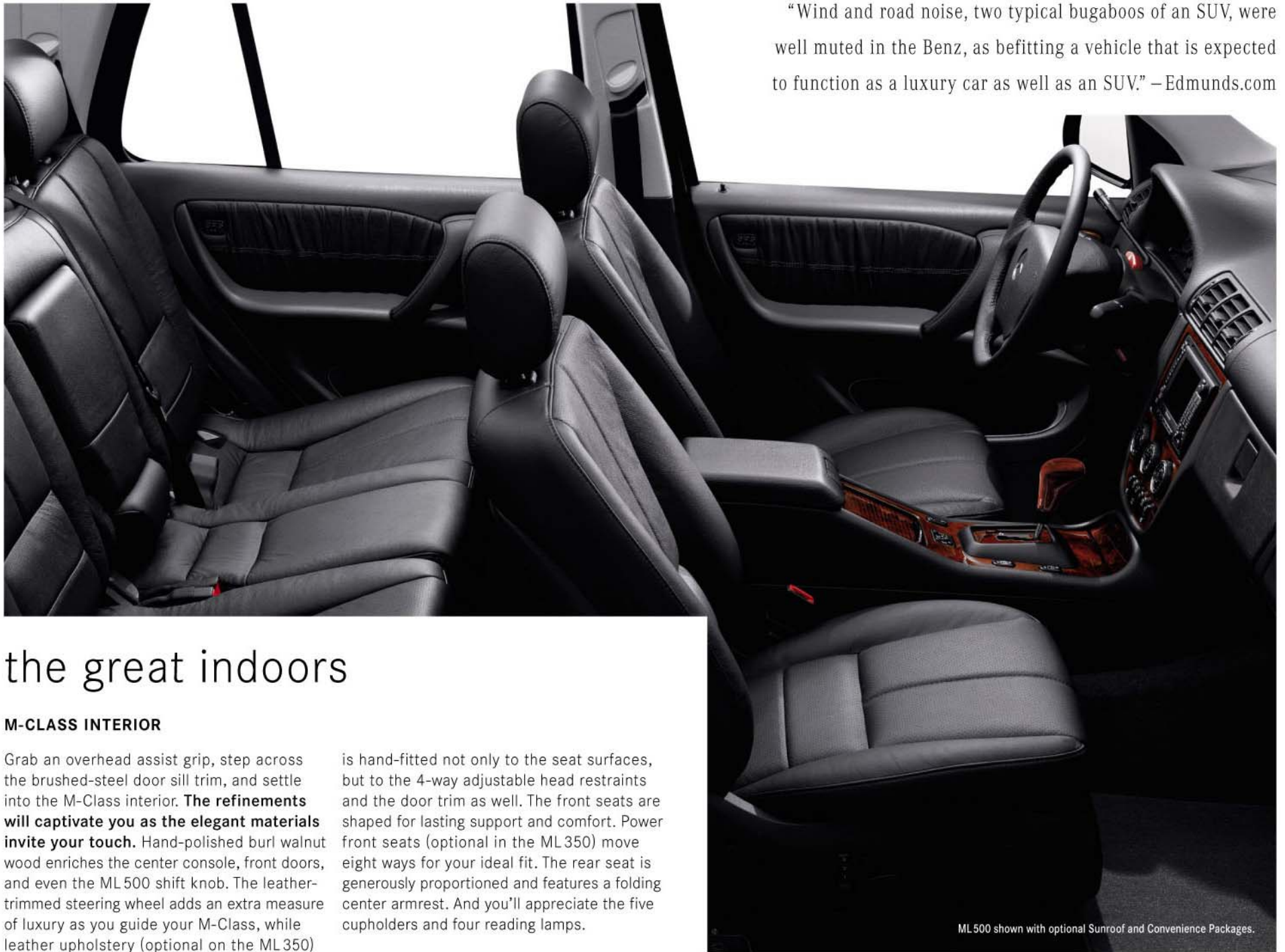


“The ultimate suburban *wunderwagen*, capable of satisfying both a family's need for cargo and kid space, while keeping its driver smiling with a very generous output of power.” –*AutoWeek*

ML 500 shown with optional Bi-Xenon headlamps with washers and Sunroof Package.

¹ Stated rates of acceleration are based upon manufacturer's track results and may vary depending upon model, environmental and road surface conditions, driving style, elevation and vehicle load. ² V-rated tires are optimized for performance driving and may provide reduced ride comfort, increased tire noise, substantially increased treadwear and greater susceptibility to damage compared with H-rated tires. ³ While the navigation system provides directional assistance, the driver must remain focused on safe driving behavior, including paying attention to traffic and street signs. The driver should utilize the system's audio cues while driving and should only consult the map or verbal displays once the vehicle has been stopped in a safe place. DVD-ROM maps do not cover all areas nor all routes within an area.

“Wind and road noise, two typical bugaboos of an SUV, were well muted in the Benz, as befitting a vehicle that is expected to function as a luxury car as well as an SUV.” –Edmunds.com



the great indoors

M-CLASS INTERIOR

Grab an overhead assist grip, step across the brushed-steel door sill trim, and settle into the M-Class interior. **The refinements will captivate you as the elegant materials invite your touch.** Hand-polished burl walnut wood enriches the center console, front doors, and even the ML500 shift knob. The leather-trimmed steering wheel adds an extra measure of luxury as you guide your M-Class, while leather upholstery (optional on the ML350)

is hand-fitted not only to the seat surfaces, but to the 4-way adjustable head restraints and the door trim as well. The front seats are shaped for lasting support and comfort. Power front seats (optional in the ML350) move eight ways for your ideal fit. The rear seat is generously proportioned and features a folding center armrest. And you'll appreciate the five cupholders and four reading lamps.

ML500 shown with optional Sunroof and Convenience Packages.

extraordinary

THE INSPIRATION EDITIONS: A STEP BEYOND

The ML350 and ML500 Inspiration Editions add a special look and feel to this handsome SUV while offering tremendous value. Thickly bolstered **sport front seats** power-adjust eight ways, providing firm support and soothing comfort. **Charcoal deep-grain leather** and sporty **silver top-stitching** are featured extensively throughout the interior, from the door trim to the seats to the shift gate. Other unique features include hand-polished **dark poplar wood trim** from our European *designo*

program, and distinctive **chrome-ringed gauges** sporting crisp white indicators. The special treatment extends right down to your feet, where the **floor mats** are dressed with the Inspiration Edition insignia and silver edging.

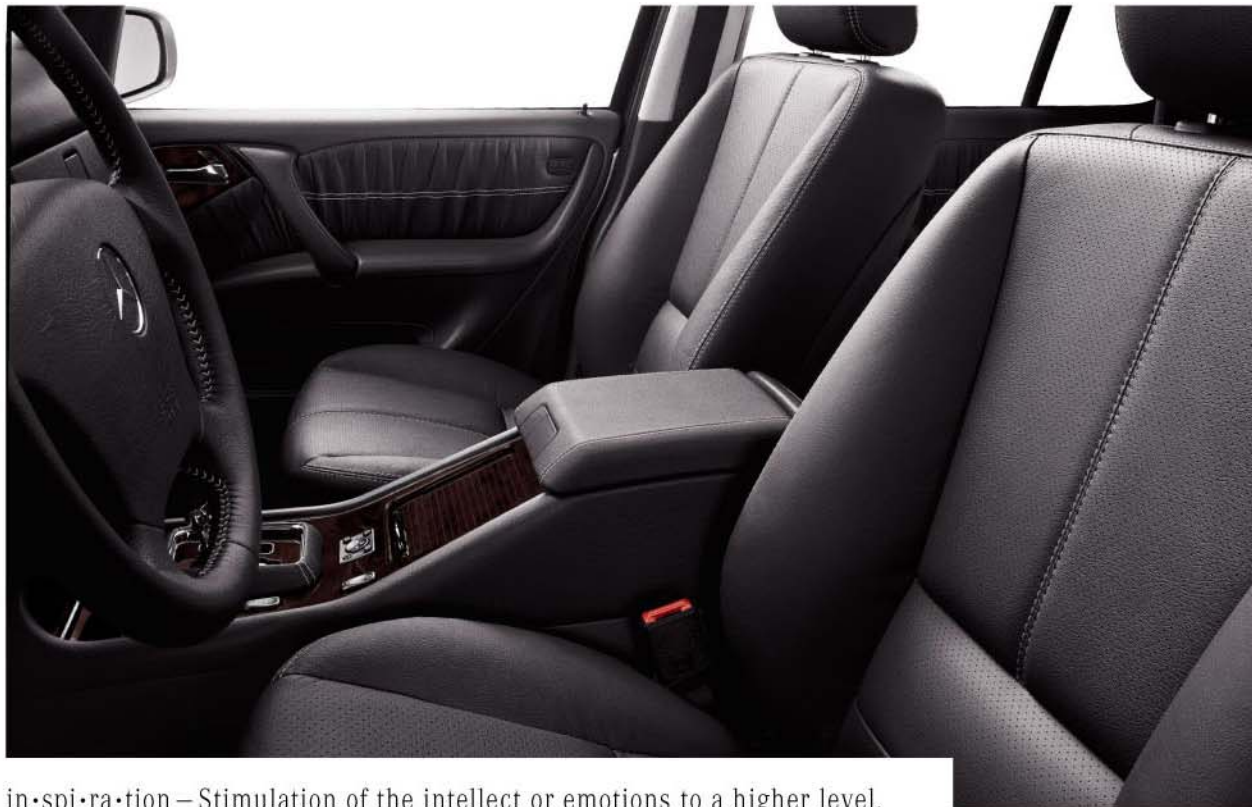
Those outside will find inspiration in stylish looks highlighted by aggressive **6-spoke 17" wheels** and a **silver-painted grille** with chrome slats. The ML350 edition is offered with either **Luxury Package M1** or **Conve-**

nience Package M2, while the ML500 edition includes **Convenience Package M3**.

Whichever M-Class Inspiration Edition you choose, you'll have the distinct pleasure of knowing you're driving **an exclusive interpretation of Mercedes-Benz luxury and style** few others will ever know. Because inspiration can come when you least expect it, and at a price lower than you might expect.



ML500 Inspiration Edition shown with optional Sunroof Package.



in•spi•ra•tion – Stimulation of the intellect or emotions to a higher level.



security
against a
hard world

Based on injury claims information supplied by the insurance industry, the Highway Loss Data Institute (HLDI) ranks the M-Class “substantially better than average”—among all SUVs—at protecting its occupants from injury. This is the HLDI’s highest ranking.¹

THE LEADER IN SUV SAFETY ENGINEERING

As the inventors of the crumple zone and pioneers of so many other safety innovations, Mercedes-Benz has set some rather high goals in safety engineering. Like every Mercedes, the 2003 M-Class features an **integrated system of safety features** that includes both responsive handling to help you avoid a collision, and advanced restraint systems and a body structure designed to protect you should a collision occur.

An M-Class safeguards its occupants with **eight air bags offering 10-way protection:** dual-stage front air bags, side-impact air bags in all four doors, and Head Protection Curtains along the front and rear side-door

glass, to help protect you from head injury and broken glass in a side impact that exceeds the deployment threshold.²

Every occupant is provided with a 3-point seat belt and an adjustable head restraint. Emergency Tensioning Devices (ETDs) can remove slack from all four outboard belts in a sufficiently severe front or rear collision. **Belt force limiters** help distribute peak impact forces more evenly between the front seat belts and front air bags. And every rear seating position includes the **LATCH system** of standardized lower anchors and top tethers to help you secure child seats.

¹ Insurance injury loss results for 1998-2000 models. See www.highwaysafety.org ² **WARNING:** THE FORCES OF A DEPLOYING AIR BAG CAN CAUSE SERIOUS OR FATAL INJURY TO A CHILD UNDER AGE 13. THE SAFEST SEATING POSITION FOR YOUR CHILD IS IN THE REAR SEAT, BELTED INTO AN APPROPRIATE, PROPERLY INSTALLED CHILD SEAT, OR CORRECTLY WEARING A SEAT BELT IF TOO LARGE FOR A CHILD SEAT. **A CHILD UNDER 13 MUST NOT USE THE FRONT SEAT UNLESS THE CHILD IS BELTED INTO AN APPROPRIATE, PROPERLY INSTALLED BABYSMART-COMPATIBLE CHILD SEAT.** A CHILD UNDER 13 WHO IS TOO LARGE FOR A CHILD SEAT MUST NOT USE THE FRONT SEAT. SEE OPERATOR'S MANUAL FOR ADDITIONAL WARNINGS AND INFORMATION ON AIR BAGS, SEAT BELTS AND CHILD SEATS. Photograph of air bags is for illustration purposes only. Front air bags, once inflated, begin to deflate immediately to provide a cushioning effect. The door-mounted side-impact air bags and Head Protection Curtains remain inflated after deployment.



PEACE OF MIND COMES STANDARD

One of the best comfort features of an M-Class is the confidence you feel while driving it. It stems in part from our reputation for looking at occupant protection from all sides. The **body-on-frame structure** is girded with special **high-strength/low-alloy (HSLA) steel in critical areas**. All eight roof pillars use a triple-layer design that incorporates a layer of HSLA steel. The rigid frame includes highly **advanced front and rear crumple zones**. Even the fuel tank is positioned for better protection, inside the frame rails and far forward of the rear bumper.

¹ No system, no matter how sophisticated, can repeal the laws of physics or overcome careless driving actions. Please always wear your seat belt.

² Braking effectiveness also depends on proper brake system maintenance, and tire and road conditions.



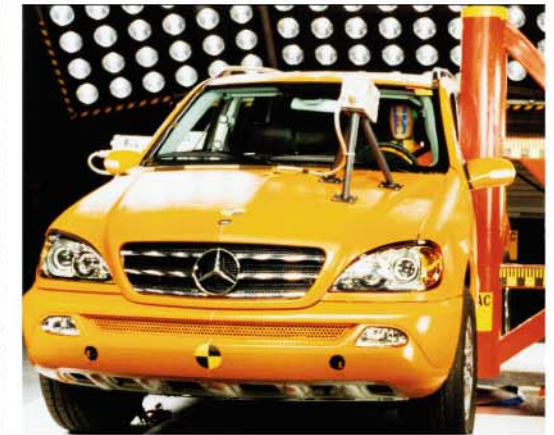
PERFORMANCE AS A SAFETY FEATURE

Without a doubt, the best way to minimize the damage of an accident is to avoid one altogether. The M-Class is systematically designed to help you do just that. Every performance feature plays its part—from responsive engines to the enhanced control of our 4-wheel Electronic Traction System and ESP, our Electronic Stability Program. In the M-Class, **ESP is further enhanced to help it detect and respond to extreme accident-avoidance maneuvers before**

a loss of stability occurs.¹ And while you'd expect standard antilock brakes on a luxury SUV, we also include our **Brake Assist system, which can actually sense a panic stop** and instantly apply maximum braking boost.² And **electronic brake force distribution**, which continually optimizes the front-rear brake balance in response to vehicle loading, the weight transfer caused by braking, and even the effects of cornering.



The Insurance Institute for Highway Safety (IIHS) rated the M-Class a “Best Pick” for its crash-test performance!



AN EDUCATION IN FORTIFICATION

If you're going to make an impact, this is the place to do it. This is our laboratory, our test track for safety engineering. This is where **we performed no fewer than 28 different crash tests on the M-Class** – more than any nation in the world requires.

And what did we learn? A lot. We learned how to create an advanced body-on-frame design that is a system of rigid and deformable components that respond in concert, to manage impact forces and to help preserve the M-Class cabin. We learned to fortify the M-Class with exceptional solidity, like using **roof pillars that are three layers thick**, and high-strength/

low-alloy (HSLA) steel in critical areas. Constant, vigilant testing helped us to develop advanced crumple zones featuring full-width crossmembers to allow the opposite side of the M-Class to help absorb some of the forces of an offset frontal crash – the most common type of all. And we designed **a front bumper that sits lower than typical SUV bumpers**, without giving up its compatibility with other light trucks.

Mercedes-Benz has been studying safety longer than any other carmaker, so it should come as no surprise that the M-Class graduated with honors from the real school of hard knocks.



¹ Based on 40-mph frontal offset crash test results of a 1999 ML 320 manufactured after March 1999. For more details, see www.highwaysafety.org.

boldness
in a striking persona

M-CLASS SPORT PACKAGE

Interested in wringing a bit more visual horsepower out of your M-Class? The Sport Package option may be the **powerful appearance statement** you're looking for. Available for both the ML350 and ML500, the package strides boldly on **17" 6-spoke EVO II alloy wheels** wrapped in all-season high-performance 275/55VR17 tires.¹ An **aggressively styled front bumper** ensures that the M-Class Sport Package makes a strong first impression, an entrance made

even more dramatic by the **round front foglamps**. **Sculpted side sills and fender flares** give a broader-looking stance to the M-Class, while an elegantly designed rear bumper and tailgate filler treatment further enhance the effect. A **chrome exhaust tip** provides the finishing accent and punctuates a sporting transformation that turns the M-Class from a handsome sport utility vehicle into an athletic vision.

SPORT PACKAGE



ML500 shown with optional Sunroof and Sport Packages.

¹V-rated tires are optimized for performance driving and may provide reduced ride comfort, increased tire noise, substantially increased treadwear and greater susceptibility to damage compared with H-rated tires.

designo

EDITIONS

FOR YOU, THE INDIVIDUAL

If you appreciate the value of the personal touch, perhaps a *designo* edition is just the kind of individuality you're looking for. Each M-Class *designo* edition matches rich tones of **specially chosen Nappa leather with hand-finished Natural poplar wood trim** to create an interior that's an artistic blend of sanctuary and exclusivity right down to the **leather-edged *designo* floor mats**. Our stylists also choose **exterior colors** to act as perfect complements to these singularly exquisite interiors.



Pearl Edition



Sable Edition



Savanna Edition



designo Java/Borneo Nappa leather with Natural poplar wood trim

handcrafted

automotive art

Inside and out, a *designo* M-Class is a feast for the eyes. Thus, the two-tone Java/Borneo leather interior can be wrapped in exterior paints chosen specifically for the Savanna, Pearl, Sable and Mystic Green Editions.¹ For the Cognac Edition, the *designo* Bourbon exterior envelops an interior whose seats, steering wheel, shift knob and front center armrest are all bathed in liquid-soft Charcoal and Cognac Nappa leather. Or, for

any of these editions, you can choose the elegance of single-tone Charcoal Nappa leather. This supple, premium leather also trims the shift gate, door panels and special floor mats. And in all M-Class *designo* interiors, Natural poplar wood trims the dash and center console, and accents the gathered leather door trim. This much distinction can't help but be very good for you as an individual.

M-Class *designo* editions are not available with Sport Package or Inspiration Editions. ML 350 *designo* editions require optional heated front seats, Sunroof Package, and Luxury or Convenience Package.
¹ Not available on ML 55 AMG.



Cognac Edition



designo Charcoal/Cognac Nappa leather with Natural poplar wood trim

IntelliChoice, an independent research firm, compared every eligible 2002 SUV on the market and named an M-Class as the "Best Sport Utility Value Over \$28,000," recognizing it as the best value in a very broad class.¹

value



ML 350 shown with optional Sunroof and Luxury Packages.

a lifetime of rewards

DOLLAR VALUE: NOW AND LATER

Simply stated, a Mercedes-Benz is a great value. There, we said it. Now let us prove it.

Throughout its lifetime, a Mercedes keeps paying its owner unexpected dividends. If you're of a mind where true value is defined in dollars, bring on the numbers. The list of standard M-Class features includes a lot of **stuff that's optional on the competition**, like automatic front and rear climate control or

genuine wood interior trim, and **things that aren't even offered on some other vehicles** in the class, like ESP or the protection of eight air bags. And should the time come when you want to revise your automotive collection and put your M-Class up for sale, think about this: Mercedes-Benz vehicles are noted for holding their worth over time and maintaining consistently high resale values.²

VALUE YOU CAN LIVE WITH

The Mercedes-Benz Maintenance Commitment and the Flexible Service System in your M-Class work together to save you both money and time. The Commitment says that **basic maintenance is included at no extra charge** for the duration of your New Vehicle Limited Warranty.³ And to make sure **you don't waste your time coming in for that service before it's needed**, the Flexible Service System tracks your actual driving conditions and some indicators of oil quality, and tells you—via a display on the instrument cluster—when basic service is due. Just bring your M-Class into any Mercedes-Benz Center, and trained technicians will do the work at no charge to you. Mercedes-Benz USA is also making a nationwide effort to encourage dealers to keep parts and labor prices competitive with those of independent service providers.

VALUE BY ANY OTHER NAME

Far beyond the money side of the equation, the **confidence that you feel** in having the reliability, durability and safety engineering of a Mercedes-Benz on your side adds new dimensions to the M-Class value story. So does having **the only Roadside Assistance that doesn't expire**.⁴ And with a family of low-emission engines that all go a little easier on the planet, that's peace of mind you can really feel good about. By any definition of value, a Mercedes-Benz is one of the smartest automotive decisions you can make.

¹ 2002 *The Complete Small Truck Cost Guide*,[®] IntelliChoice,[®] Inc., www.intellichoice.com. 2002 ML 320 compared against all vehicles with complete ownership costs. ² Based on projections by IntelliChoice,[®] for 2002 vehicles, most Mercedes-Benz models rank in the top third for retained value over all vehicles. 2002 *The Complete Small Truck Cost Guide*,[®] www.intellichoice.com.

³ Includes oil change and other standard use level maintenance items identified in the Service Booklet for each model, at intervals determined by the Flexible Service System throughout the warranty period. Brake pads and discs, tire rotation and wiper blades are not covered. Driver is responsible for monitoring fluid levels and tire pressures between service visits. Limitations apply.

⁴ Vehicle must be accessible from main roads. Roadside Assistance repairs may involve charges for service and parts.



Cargo-area-mounted 6-CD changer



9-speaker Bose AudioPilot sound system



Inspiration Edition



Bi-Xenon headlamps

M-CLASS OPTIONS AND PACKAGES

What's the difference between an option and an accessory? Simple: Options and option packages are put in at the factory, and accessories can be installed by your Mercedes-Benz dealer anytime you request. We offer plenty of both, so you can equip your M-Class just the way you want it.

Bi-Xenon low-beam and high-beam headlamps¹ include high-pressure washers to help improve your driving visibility. Our **Parktronic** system can alert you to obstacles you might not see as you're trying to park. **Heated front seats**² offer two levels of soothing warmth. For audiophiles, the 9-speaker digital **Bose® sound system**¹ features AudioPilot™, which "listens" to ambient noise in the cabin and processes the sound to maintain its clarity with no perceptible

change in volume. The Bose option also includes our **6-CD changer**, which is concealed alongside the cargo area.

The **Sunroof Package**¹ includes power rear-quarter vent windows. The ML 350 **Luxury Package** adds leather upholstery, power front seats and privacy glass. Our **Convenience Packages**¹ bundle desirable features like rain-sensing wipers, 3-position memory for each front seat, and power folding outside mirrors. And perhaps our greatest value comes in the form of our ML 350 and ML 500 **Inspiration Editions**, with special trim, sport front seats and an M-Class full of extras, all at inspiring savings.

¹ Standard on ML 55 AMG. ² Standard on ML 500 and ML 55 AMG.



Leather upholstery and 8-way power front seats (ML 350 Luxury Package)



Power tilt/sliding tinted glass sunroof



3-position seat and mirror memory



Parktronic audio-visual parking assistance system



Third-row Seating Package



Heated front seats



Power mirror fold-in

M-CLASS ACCESSORIES

For the perfect match for your lifestyle, and a perfect fit for your M-Class, Mercedes-Benz accessories offer the quality and support you expect. Every accessory is engineered to our specifications, then tested and approved – and each one comes with its own warranty.

For the M-Class Modular Control System, we offer a **DVD navigation system**¹ and a cutting-edge integrated **digital phone** (see below). The **trailer hitch kit** helps you take advantage of the 5,000-lb towing capacity of your M-Class.

¹ Standard on ML500 and ML55 AMG.

Illuminated running boards light up when you unlock your M-Class – even via the remote – to facilitate your entry and exit. The **basic carrier** lets you attach our accessory **sport luggage container, bike racks or ski/snowboard racks** to the roof. Our tubular stainless-steel **step bars** add a rugged look and integrate anti-skid step pads. And this is just the beginning. Ask your Mercedes-Benz dealer for a copy of the M-Class accessory catalog.



PORTABLE DIGITAL PHONE

Presenting The Definitive Mobile Network, featuring the sleek, ultracompact **Motorola V60™ digital phone**. Using a visionary fiber-optic network, this clever system seamlessly integrates with the M-Class audio system to pause the CD or mute the radio the moment a call comes in. If you add phone numbers to the portable handset's phone book when you're away from your M-Class, the in-car system is updated automatically when you plug the phone into the console. You can use the in-dash Modular Control System keypad to dial, send and end calls. There's also **optional voice control** for the phone and audio system. Just tap a stalk on the steering column and talk normally, so you can make calls and select music without taking your hands off the wheel.

Always plug the portable phone into the cradle cord for use inside the vehicle. Operating a phone or radio transmitter with its own attached or built-in antenna while the engine is running can interfere with the vehicle's electronic system. For safety reasons, the driver should not use the cellular phone while the vehicle is in motion. We encourage the driver to stop the vehicle in a safe place before answering or placing a call.



Accessory Class III trailer hitch



Accessory illuminated running boards



Accessory stainless-steel step bars



Accessory basic carrier and sport luggage container

this is the place

M-CLASS ENVIRONMENTS

Enjoying the high-riding view is but one way to appreciate an M-Class. To maintain the M-Class environment of your choosing, the **climate control system automatically regulates the temperature and airflow.** Rear-seat passengers get to control their airflow direction and blower speed via an auxiliary control panel. A **sun sensor** automatically helps the system maintain a more even cabin temperature. And an **electrostatic filter** helps remove dust, pollen and microscopic spores from the incoming air. On cold days, you can even run a quick errand and still keep the cabin of your M-Class warm for up to 30 minutes by pressing the REST mode button on the dash after you turn the vehicle off.

Within the quiet cabin, noises of the outside world are kept at bay, and insiders can be treated to the pure music of an optional **9-speaker Bose® digital sound system¹ featuring AudioPilot™**, which "listens" for ambient noise and compensates for it automatically with no perceived change in volume.

Every M-Class offers a bounty of **unexpected standard conveniences**, like four one-touch up/down power windows and a rear window wiper that goes on automatically if you shift into Reverse while the front wipers are on. And the headlamps can be set to turn themselves on automatically in low-light situations. Wherever you look in an M-Class, you'll find a new way to savor it, whether for its comfort, materials or features.



ML 350 shown with optional Sunroof and Convenience Packages.

MODULAR CONTROL SYSTEM

The Modular Control System (MCS) in your M-Class helps you keep in touch, on track and in tune wherever you go. **MCS integrates the controls for the audio, navigation² and optional phone with a large color-LCD screen.** The system automatically mutes the radio when it has a navigation instruction for you. If a phone call comes in, it pauses the CD or tape. And when you hang up, it resumes where you left off. New for 2003, the **MCS GPS-satellite navigation system uses DVD**

technology—a single disc holds maps for all of the U.S. and Canada—to help make driving simpler by offering precise visual and spoken directions to most street addresses and to many points of interest. The system also provides on-screen color route maps that you can zoom in for detail, or zoom out to get your bearings. And **when you're not navigating, you can play audio CDs** in the DVD drive, which is concealed behind the MCS display.

¹ Standard on ML 55 AMG. ² Standard on ML 500 and ML 55 AMG, dealer-installed accessory on ML 350. While the navigation system provides directional assistance, the driver must remain focused on safe driving behavior, including paying attention to traffic and street signs. The driver should utilize the system's audio cues while driving and should only consult the map or verbal displays once the vehicle has been stopped in a safe place. DVD-ROM maps do not cover all areas nor all routes within an area.

M-Class features

ML 500 and Inspiration Editions



ML 350



HAND-POLISHED WOOD TRIM

Hand-finished burl walnut—plantation-grown to preserve the world's natural forests—accents the console and doors. The ML 350 Luxury Package also includes additional wood console trim. The ML 500 adds the extra trim and a wood shift knob, while the ML 55 AMG adds a wood-trimmed steering wheel too.

STANDARD 17" ALLOY WHEELS

Striking 17" aluminum-alloy wheels are the standard rolling stock on every M-Class, with the ML 350 sporting a 5-spoke look, and the ML 500 and Inspiration Editions getting an aggressive 6-spoke design.



ONE-TOUCH POWER WINDOWS

The M-Class driver and every outboard passenger enjoy the convenience of power windows that **open or close at the touch of a button.**

HEATED FRONT SEATS

This soothing feature (optional on the ML 350, standard on the ML 500 and ML 55 AMG) offers **two levels of warmth**, as well as automatic step-down to the lower heating level and timed shutoff.

FOUR 12-VOLT POWER OUTLETS

For everything from **charging a phone to powering an electric air pump**, covered 12-volt power outlets are located below the dash, in the cargo area, and with the lighters in the front and rear ashtrays.

AUTOMATIC CLIMATE CONTROL

Just **set your desired temperature and the climate control system does the rest.** And the system lets you adjust the airflow for the **rear cabin** separately.

M-Class features



TRIP COMPUTER

This **digital display** (optional on the ML350, standard on the ML500 and ML55 AMG) lets you keep track of the date, compass heading, elapsed trip time, fuel economy and distance to empty.

REMOTE CENTRAL LOCKING

A model of convenience and security, your M-Class key lets you **remotely unlock all the doors** or just the driver's door. You can also use the remote to **unlock the tailgate**. Or **trigger your alarm with the panic button**. And your M-Class will allow its engine to start only after verifying the key's unique electronic code.



HEATED POWER SIDE MIRRORS

Both outside mirrors are **power adjustable and automatically heated**. Integrated auxiliary turn signals are highly visible to others.



THREE FRONT CUPHOLDERS

The roomy M-Class center console features **two levels of enclosed storage and a single extra-large cupholder**. Two more retractable cupholders conveniently pop out from either end of the dash.



POWER FRONT SEATS AND LEATHER UPHOLSTERY

The lap of luxury never felt so right as when it was upholstered in **soft, perforated leather**. And with **8-way power front seats**, the ideal driving position just got that much easier to attain. (All of these are standard on the ML500 and ML55 AMG, and optional on the ML350 as part of the Luxury Package, the Convenience Package or the Inspiration Edition.)

REAR CLIMATE CONTROLS AND CUPHOLDERS

Second-row passengers can exercise greater authority over their comfort with an auxiliary control panel that lets them **select automatic or manual airflow direction and blower speed** from vents behind the center console and under the front seats. Retractable dual cupholders are also standard.





ML 350 shown above with optional Sunroof and Luxury Packages. ML 500 shown at right with optional Sunroof and Third-row Seating Packages.

M-CLASS VERSATILITY

Quite literally, “utility” is the middle name of an SUV. The M-Class SUV takes its middle name to heart, making it easy to carry crowds, kids and cargo in **a multitude of configurations**. With all seats up, the M-Class comfortably accommodates five people and a generous load of gear. If you need more space for stuff or you’ve got a longer load to haul, the

60/40-split rear seat folds down to vary the combination of seating and cargo space. And for really big equipment and the weekend moving jobs, you can lower the entire second-row seat flush with the cargo floor to **expand the carrying capacity to as much as 81.2 cubic feet!** When the talk turns to utility, the M-Class speaks volumes.

1 71.0 on ML 55 AMG. 2 Not available on ML 55 AMG.



THIRD-ROW SEATING PACKAGE

When the utility you’re looking for in a luxury SUV includes being able to **carry as many as seven passengers** in Mercedes-Benz style and comfort, the optional M-Class Third-row Seating Package² makes the task simple. The Package adds the versatility of a pair of **full-size rear seats** that anchor securely to the cargo floor or **fold away against the side walls**. Upholstered to match the front

seats, both third-row seats come with 3-point seat belts and adjustable head restraints. And when the time for people-hauling ends and cargo-hauling begins, **the third-row seats can be removed quickly and easily**, clearing the flat cargo floor for easy loading over the low bumper height. If you’re a driver who sees flexibility as a priority, the Third-row Seating Package can be a prized necessity.



Unsecured cargo can become hazardous in a collision. Always secure cargo using the floor-mounted tie-down hooks.

ready
and willing



“The seamless automatic gearbox did such a good job tailoring its shift points to my (read: *performance-oriented*) driving style that the only time I touched the Touch Shift was when curiosity struck.” –Edmunds.com

THE M-CLASS TRANSMISSION RESPONDS TO YOU

The 5-speed automatic transmission in the M-Class **pays attention to your driving style, and adjusts its shift patterns accordingly.** If you're taking a more spirited approach, the gearbox will hold its shifts until higher revs for maximum performance. However, if the transmission senses a more relaxed mood to your motoring, it will tailor shifts to help optimize fuel economy. And any time your spirit of independence takes command, **the Touch Shift feature in your**

M-Class lets you pursue a more manual-style control of upshifts and downshifts. With the transmission in Drive, simply tap the shift lever to the left when you want to drop down a gear, and to the right to allow an upshift. Touch Shift also offers **one-touch selection of the best gear for acceleration.** In either mode – driver-adaptive automatic or shift-it-yourself Touch Shift – you'll always enjoy exceptionally crisp, clean gear changes.



MORE POWER THAN EVER

If you're not a little power hungry, why own an SUV? The ML 350 and ML 500 powerplants each take their job very seriously. For instance, both M-Class engines make their **peak torque at low rpm.** That's good to know if you plan to tow a trailer or a boat, but it's even more useful for the day-to-day tasks like **quick acceleration around town** and getting up to freeway speeds. And both engines post **cleaner emissions** for the sake of the planet.

3.7-LITER V-6

Bigger, better, stronger. Introducing our latest masterpiece, the new, more powerful V-6 of the ML 350. The payoff: **232 horsepower**, and **254 lb-ft of peak torque** from 3,000 rpm all the way up to 4,500 rpm. That's good for a 0–60 punch of 8.5 seconds¹ and a smooth burst of passing power whenever you need it. And the ML 350 runs so clean that it's certified to meet super-stringent **Ultra Low Emission Vehicle (ULEV)** standards.



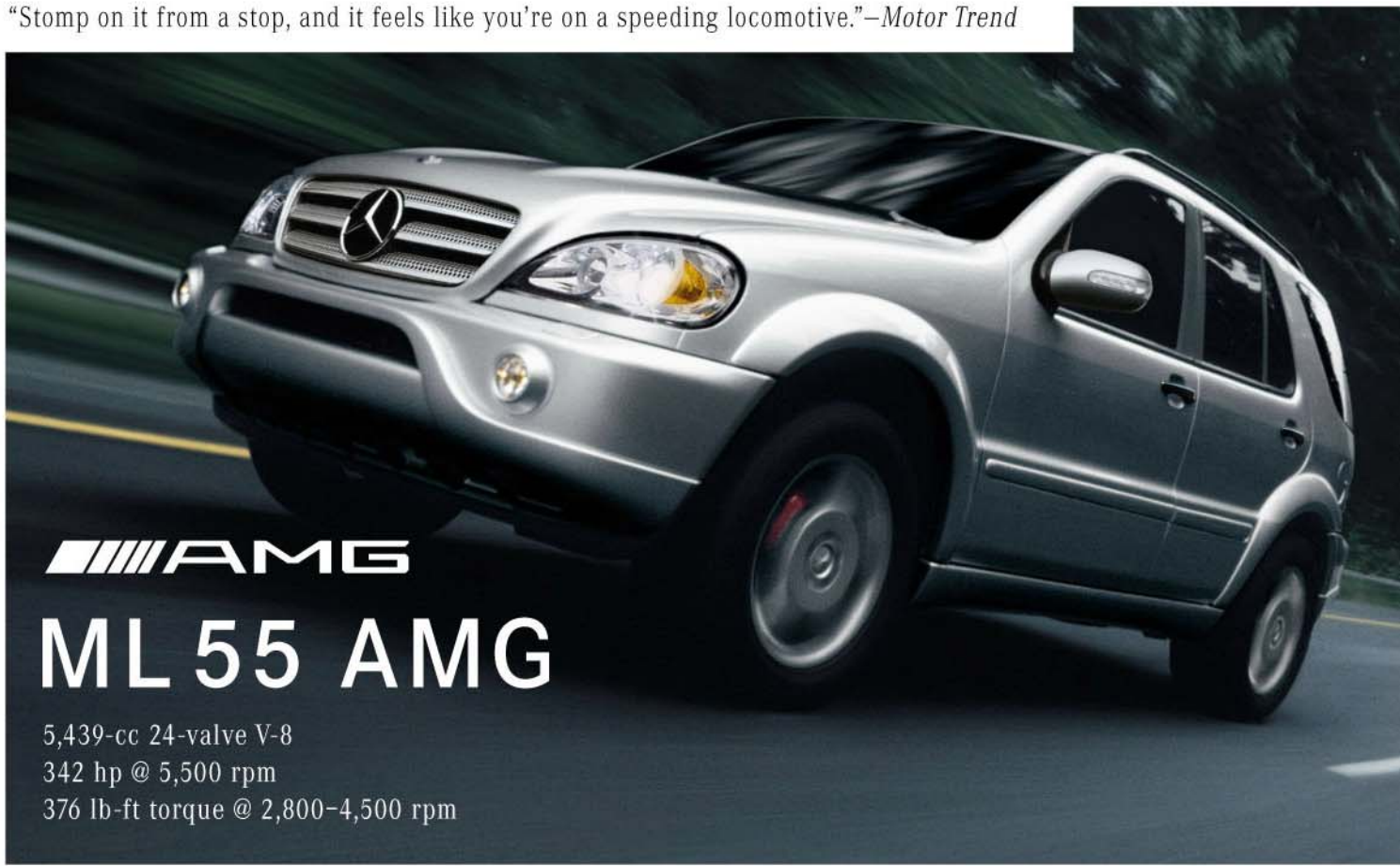
5.0-LITER V-8

This is the beast. Its **288 horsepower** earns it enough authority to get respect in any crowd of SUVs. Better still, the ML 500's 5.0-liter V-8 cranks out **325 lb-ft of peak torque – pure thrust – from 2,700 to 4,250 rpm.** That's enough inspiration to sprint the ML 500 from **zero to 60 mph in a scant 7.7 seconds.**¹ But this V-8 never forgets its manners: The ML 500 is a certified **Low Emission Vehicle (LEV).**



¹ Stated rates of acceleration are based upon manufacturer's track results and may vary depending upon model, environmental and road surface conditions, driving style, elevation and vehicle load.

“Stomp on it from a stop, and it feels like you’re on a speeding locomotive.”—*Motor Trend*



AMG

ML 55 AMG

5,439-cc 24-valve V-8
342 hp @ 5,500 rpm
376 lb-ft torque @ 2,800-4,500 rpm

PASSIONATE RESPONSE

What’s in a name? In the case of AMG, plenty. Standing behind an almost mythical lore is a meticulous **attention to detail**, sensational **style** and an absolute **obsession with performance**. It’s these elements that make up the very soul of the breathtaking ML 55 AMG.

The most striking example is the engine itself: a **342-hp V-8 masterpiece**, each one hand-crafted by a single AMG master engine builder. The result? An awesome 376 lb-ft of torque and a blistering **0-60 time of 6.4 seconds**.¹ And all that power isn’t just at your feet. It’s

at your fingertips — with a quicker-shifting, AMG-enhanced 5-speed automatic transmission with Touch Shift. Driving pleasure is further enhanced by race-bred 4-wheel disc brakes with 4-piston front calipers, and **18" AMG monoblock alloy wheels** with enormous **285/50 R18 high-performance tires**.²

The performance attitude continues outside, with **Bi-Xenon headlamps**, seductively sculpted bumpers and **fender flares**, a silver-painted grille and — appropriately enough — **twin power domes** accentuating the ML 55 hood.

Inside, luxurious **Charcoal deep-grain leather** upholstery and **black burl walnut trim** extend to the steering wheel and shift knob. The **ivory-color AMG instruments** are ringed in chrome. And each of the heated, 8-way power **sport front seats** features **3-position memory**.

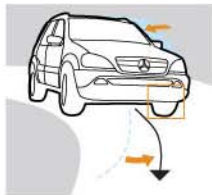
Open the tinted glass **power sunroof** and let the rush of fresh air invigorate you. And while the 9-speaker **Bose® AudioPilot™ digital sound** system gives life to your music, let the DVD-based **GPS navigation** system guide you to your next destination.³ Then again, having an actual destination might be missing the point.



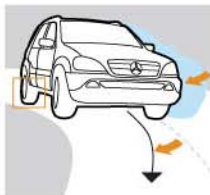
¹ Stated rates of acceleration are based upon manufacturer’s track results and may vary depending upon model, environmental and road surface conditions, driving style, elevation and vehicle load. ² W-rated tires are optimized for performance driving and may provide reduced ride comfort, increased tire noise, substantially increased treadwear and greater susceptibility to damage compared with H-rated tires. ³ While the navigation system provides directional assistance, the driver must remain focused on safe driving behavior, including paying attention to traffic and street signs. The driver should utilize the system’s audio cues while driving and should only consult the map or verbal displays once the vehicle has been stopped in a safe place. DVD-ROM maps do not cover all areas nor all routes within an area.

ELECTRONIC STABILITY PROGRAM

The M-Class was the first SUV equipped with the all-road, all-season handling prowess of ESP. ESP can **dramatically enhance stability and control** by monitoring your steering and braking actions. If your M-Class begins to fishtail (oversteer) or plow (understeer) in a corner, ESP can apply the brakes to any of the four wheels or reduce excess power to help you regain control and stay on course.!



ESP brakes the outside front wheel to counteract oversteer.



ESP brakes the inside rear wheel to counteract understeer.

4-WHEEL ELECTRONIC TRACTION SYSTEM

4-ETS+ is an innovation in all-wheel traction that can help get your M-Class moving even if only one wheel has grip. If 4-ETS+ detects the onset of wheelspin, it applies the brakes to the slipping wheel or wheels to restore the balanced distribution of the engine's torque to all four wheels. By simulating the effect of locking the front, center or rear differentials, 4-ETS+ ensures that power is sent to where the traction is – even if that's only one wheel. There are no buttons to push or levers to engage. It's an integral part of the permanent 4-wheel drive of every M-Class. And it helps make the M-Class a supremely surefooted SUV.

1 No system, no matter how sophisticated, can repeal the laws of physics. Performance is limited by available traction, which snow, ice and other conditions can affect. Always drive carefully, consistent with conditions. Best performance in snow is obtained with winter tires. 2 Braking effectiveness also depends on proper brake system maintenance, and tire and road conditions.



"Importantly, this sport ute is fun to drive." – MSN Carpoint, Carpoint.com

ML 500 shown with optional Bi-Xenon headlamps with washers and Sunroof Package.

AT HOME ON ANY ROAD

Perhaps you didn't know that 4-wheel-drive vehicles could be this enjoyable to drive. **An SUV that handles? Absolutely.** The M-Class was developed to drive like a Mercedes, and it was the **first luxury SUV with 4-wheel independent suspension.** The ML 350 and ML 500 feature 17" alloy wheels and tires, while 18" wheels are standard on the ML 55 AMG. And the M-Class has been continually praised for its **crisp response and smooth ride.**

EMERGENCY-SENSING BRAKE ASSIST

It's no surprise that the M-Class has 4-wheel disc brakes and ABS. But it also features Brake Assist, another Mercedes-Benz first. Brake Assist **senses a panic stop** from how quickly you hit the brakes, and **instantly applies all available power braking boost** until you let up. By reducing the natural human tendency not to brake hard enough, soon enough, Brake Assist can actually help your M-Class **stop sooner in an emergency.**



TREAD SMARTLY

The smooth, refined personality you'll enjoy on the road in your M-Class has an equally capable alter ego in the rough. And all you need to do to engage it is drive it there.

The 4-wheel independent suspension offers a limber eight inches of wheel travel, and up to **8.7 inches of ground clearance**.¹

Its 4-wheel Electronic Traction System (4-ETS+) is enhanced with a bevy of off-road features. **“Two-foot mode”** lets you apply the brakes while feathering the accelerator without defeating the traction control or the Antilock Braking System—extremely helpful when you're tiptoeing over rocks or starting up hills. When using low range, the ABS automatically engages a **loose-surface program** that helps to shorten stopping distances from speeds under 18 mph. And our **downhill traction function** helps you manage a steady crawl speed down challenging hills by automatically engaging the ABS, redistributing torque to the gripping wheels, and allowing some beneficial tire “plowing” on loose surfaces.²

And if your idea of outdoorsmanship involves parking lakeside and taking out the boat, you'll be pleased to know that **every M-Class can tow up to 5,000 lb.**³

¹ Up to 8.4 inches on ML55 AMG. ² Off-road driving should only be attempted by drivers with the necessary skill, experience and understanding of the vehicle's limits. ³ With accessory trailer hitch kit and trailer brakes. Please read Operator's Manual before towing. ⁴ Figure applies to ML 350 and ML 500 only. Driving in water too quickly or that is deeper than the specified limit can result in severe engine damage.



IT'S LEARNED TO CRAWL

A push of a button engages the 2.64:1 low range of the M-Class 2-speed transfer case, putting **one of the lowest low-range 1st-gear ratios of any SUV** as close as the Touch Shift gear selector. Extremely useful for crawling down steep inclines, it also provides remarkable torque multiplication for scaling your way back up.

THE RIGHT PROFILE FOR THE WRONG ROADS

The M-Class will take to a winding road with ease, but it will also eagerly take on the hills. Note the **short overhangs, high ground clearance and big tires**. It's even got a secondary air intake high in the right front fender to help protect the engine when taking advantage of its **20" low-speed fording depth**.⁴



2003 M-Class specifications

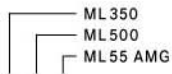
ENGINE AND DRIVETRAIN		ML 350	ML 500	ML 55 AMG
Engine		3,724-cc SOHC 18-valve 90° V-6. High-pressure die-cast alloy cylinder block, alloy heads.	4,966-cc SOHC 24-valve 90° V-8. High-pressure die-cast alloy cylinder block, alloy heads.	5,439-cc SOHC 24-valve 90° V-8. High-pressure die-cast alloy cylinder block, alloy heads.
Net power		232 hp @ 5,750 rpm	288 hp @ 5,600 rpm	342 hp @ 5,500 rpm
Net torque		254 lb-ft @ 3,000-4,500 rpm	325 lb-ft @ 2,700-4,250 rpm	376 lb-ft @ 2,800-4,500 rpm
Fuel and ignition system		ME 2.8 engine management (ME 2.0 on ML 55 AMG). Integrated sequential multipoint fuel injection and phased twin-spark ignition includes individual cylinder control of fuel spray, spark timing and phase, and antiknock. Two high-energy ignition coils and two spark plugs per cylinder, with 100,000-mile spark plug intervals. Electronically controlled throttle. Fuel requirement: Premium unleaded, 91 pump octane.		
Intake system		Magnesium 2-stage resonance intake manifold increases the intake runner length at lower rpm for improved response (ML 55 AMG includes AMG-design manifold with enlarged-diameter runners for higher rpm).		
Transmission		Driver-adaptive electronic 5-speed automatic. Touch Shift allows driver to manually downshift and allow upshifts by nudging the shift lever to the left or right from the Drive position. Display in instrument cluster indicates selected gear range.		
Transfer case		2-speed, electronically controlled via dashboard switch. Transfer-case ratios: 1.00:1 normal range/2.64:1 low range.		
Axle ratio		3.70:1	3.70:1	3.46:1
TRACTION AND STABILITY				
4-wheel drive system		Permanent, with 2-speed electronically controlled transfer case. 48/52 front/rear torque split maintained via a center differential.		
4-wheel Electronic Traction System (4-ETS+) with two-foot mode and downhill traction system		Standard 4-ETS+ monitors the speed of all four wheels to detect wheel slip, then applies individual brakes as needed to provide the effect of locking the front, rear and/or center differentials, and/or reduces excess engine power. 4-ETS+ continually controls wheel slip to ensure that power is permitted to flow to the wheel(s) with traction. In low range, "two-foot mode" allows simultaneous application of brakes and light throttle while both traction system and ABS remain active, for more precise control starting up inclines or climbing over obstacles at crawl speeds. The "downhill traction function" automatically engages to assist in "engine braking" when descending hills in low range, between 2 and 12 mph, with minimal throttle application. If the system senses that one or more wheels loses traction, it brakes the slipping wheels to allow torque to flow to the wheel or wheels with traction, for easier control of a more constant descent speed.		
Electronic Stability Program (ESP)		Standard ESP compares the driver's intended course, via steering and braking inputs, to the vehicle's response, via lateral acceleration, rotation (yaw) and individual wheel speeds. ESP then brakes individual front or rear wheels and/or reduces excess engine power as needed to help correct understeer (plowing) or oversteer (fishtailing). ¹		
CHASSIS				
Suspension		4-wheel independent double wishbone suspension with lightweight, high-strength forged aluminum-alloy rear and upper front suspension arms, and lower front wishbones forged from high-strength steel. Front torsion bar springs. Rear coil springs. Front and rear stabilizer bars. Gas-pressurized front and rear shock absorbers. 8.0 inches wheel travel.		
Steering		Rack-and-pinion with power assist and integral hydraulic damper. Steering-wheel turns, lock-to-lock: 3.62. Turning circle, curb-to-curb: 39.0 ft/11.9 m.		
Wheels , aluminum-alloy, standard with optional Sport Package Inspiration Edition		5-spoke design, 8.0Jx17. EVO II machined-finish 6-spoke design, 8.5Jx17. 6-spoke simulated two-piece design, 8.5Jx17.	6-spoke simulated two-piece design, 8.5Jx17. EVO II machined-finish 6-spoke design, 8.5Jx17. 6-spoke simulated two-piece design, 8.5Jx17.	AMG monoblock design, 9.0Jx18. Not available. Not available.
Tires , steel-belted radial, standard with optional Sport Package Inspiration Edition Spare tire		255/60R17 106H, all-season performance. 275/55R17 109V, all-season high-performance. ² 275/55R17 109V, all-season high-performance. ² Temporary-use tire in under-vehicle carrier.	275/55R17 109V, all-season high-performance. ² 275/55R17 109V, all-season high-performance. ² 275/55R17 109V, all-season high-performance. ² Temporary-use tire in under-vehicle carrier.	285/50R18 109W, all-season high-performance. ² Not available. Not available. Temporary-use tire in enclosed compartment in cargo area.
Brakes , dual-circuit power-assisted		11.85" ventilated front discs/11.22" solid rear discs.	13.58" ventilated front discs/13.5" solid rear discs with 4-piston front calipers.	
Antilock Braking System (ABS)		Standard 4-channel ABS senses impending wheel lockup under heavy braking and pumps the front brakes individually or the rear brakes together (to help maintain stability) up to 30 times per second as needed to prevent lockup and maintain steering ability. With transfer case in low range, automatic loose-surface program helps shorten stopping distances from speeds under 18 mph.		
Brake Assist		Upon sensing emergency braking via the speed at which the driver presses the brake pedal, Brake Assist immediately applies maximum available power boost, potentially reducing overall stopping distance by eliminating the delay caused by a common human tendency not to brake hard enough, soon enough. Letting up on brake pedal releases Brake Assist. Braking effectiveness also depends on proper brake system maintenance, and tire and road conditions.		
Electronic Brake Force Distribution		Standard Electronic Brake Force Distribution shifts additional brake force to the rear wheels in straight-line braking, to promote more even brake-pad wear. For stability in curves, a normal front/rear split is restored.		
DIMENSIONS ³		ML 350	ML 500	ML 55 AMG
Wheelbase		111.0 in/2,820 mm	111.0 in/2,820 mm	111.0 in/2,820 mm
Overall length		182.6 in/4,638 mm	182.6 in/4,638 mm	182.5 in/4,635 mm
Overall height (including roof rails)		71.7 in/1,820 mm	71.7 in/1,820 mm	71.1 in/1,804 mm
Overall width		72.4 in/1,840 mm	72.4 in/1,840 mm	74.6 in/1,895 mm
Track (front and rear)		60.4 in/1,535 mm	61.2 in/1,555 mm	61.2 in/1,555 mm
Curb weight		4,819 lb/2,185 kg	4,874 lb/2,210 kg	5,073 lb/2,300 kg
Headroom (front-rear)		All models: 39.8 in/1,010 mm - 39.7 in/1,008 mm		
Legroom (front-rear)		All models: 40.3 in/1,024 mm - 38.0 in/966 mm		
Shoulder room (front-rear)		All models: 58.2 in/1,478 mm - 57.8 in/1,468 mm		
Cargo volume (floor to ceiling), 2nd-row seats in use⁴		34.7 cu ft/982 liters	34.7 cu ft/982 liters	31.9 cu ft/904 liters
2nd-row seats lowered⁴		81.2 cu ft/2,300 liters	81.2 cu ft/2,300 liters	71.0 cu ft/2,009 liters
MANEUVERABILITY		ML 350	ML 500	ML 55 AMG
Ground clearance		8.7 in	8.7 in	8.4 in
Angle of approach (A)		29.0°	29.0°	27.0°
Angle of departure (B)		30.0°	30.0°	26.5°
Breakover angle (C)		20.0°	20.0°	20.0°
Maximum low-speed fording depth⁵		20 in	20 in	19.4 in

PERFORMANCE			
Acceleration, 0-60 mph⁶	ML 350	ML 500	ML 55 AMG
	8.5 seconds	7.7 seconds	6.4 seconds
Emission certification	Ultra Low Emission Vehicle (ULEV)	Low Emission Vehicle (LEV)	Low Emission Vehicle (LEV)
Towing capacity⁷	5,000 lb (Class III)	5,000 lb (Class III)	5,000 lb (Class III)



¹ No system, no matter how sophisticated, can repeal the laws of physics or overcome careless driving actions. Please always wear your seat belt. ² V-rated and W-rated tires are optimized for performance driving and may provide reduced ride comfort, increased tire noise, substantially increased treadwear and greater susceptibility to damage compared with H-rated tires. ³ Dimensions shown are for models with standard equipment plus optional sunroof. ⁴ Unsecured cargo can become hazardous in a collision. Always secure cargo using the floor-mounted tie-downs. ⁵ Driving in water too quickly or that is deeper than the specified limit can result in severe engine damage. ⁶ Stated rates of acceleration are based upon manufacturer's track results and may vary depending upon model, environmental and road surface conditions, driving style, elevation and vehicle load. ⁷ With accessory trailer hitch kit and trailer brakes. Please read Operator's Manual before towing.

2003 M-Class equipment



ML 350
ML 500
ML 55 AMG

EXTERIOR FEATURES

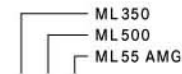
- ¹ ○¹ ● Power tilt/sliding tinted glass sunroof with manual sunshade.
- ● — Color-keyed bumpers, rub strips, rocker sills, tailgate filler panel.
- ¹ ○¹ ● Sculpted color-keyed bumpers, fender flares, side cladding and tailgate filler panel. Round front foglamps.
- — — Black grille with black ribs. Black door handles. Color-keyed liftgate handle.
- ● — Black grille with chrome ribs. Chrome trim on door handles and liftgate handle.
- ² ○² ● Silver-painted grille with chrome ribs.
- — ● Power-dome hood. Chrome trim on door handles and liftgate handle. Dual polished stainless-steel exhaust tips.
- ● — Variable-focus halogen headlamps with projector low beams and clear high-impact polycarbonate lenses.
- ○ ● Bi-Xenon High Intensity Discharge low-beam and high-beam headlamps with automatic level control, and halogen auxiliary high beams for flash-to-pass feature. High-pressure headlamp washers.
- ● ● Driver-selectable light-sensing headlamps can be set via the Auto position of the headlamp switch to automatically illuminate the low-beam headlamps and all exterior running lamps in darkness or when entering dark tunnels or parking garages.
- ● ● Dealer-programmable Daytime Running Lamps illuminate low-beam headlamps at reduced intensity (full intensity for available Bi-Xenon lamps) and exterior running lamps full-time.
- ● ● Halogen front foglamps. Single red rear foglamp, integrated with left taillamp. Jewel-effect taillamp lenses.
- ● ● Touch Turn Signals flash three times with one touch of turn-signal lever, for lane-changing.
- ● ● Dual color-keyed power mirrors, automatically heated. Auxiliary LED turn-signal indicators integrated in mirror housings.
- ¹ ● ● Auto-dimming left-side mirror (shifting to Reverse automatically cancels dimming).
- ¹ ○¹ ● Parking-assist right-side mirror (can be programmed to tilt down upon shifting to Reverse). Side mirror settings linked to driver's seat memory. Power fold-in for both mirrors.
- ● ● Electrically heated rear window with automatic shutoff based on time, vehicle speed and outside temperature.
- ● ● 2-speed/intermittent front windshield wipers with wide-spray washer nozzles.
- ¹ ○¹ ● Infrared rain sensor (automatically adjusts intermittent wiper delay based on rainfall).
- ● ● Intermittent rear wiper with washer. When front wipers are on, shifting to Reverse automatically activates rear wiper.
- ¹ ● ● Privacy glass for rear doors, rear quarters and liftgate.
- ● ● Black protective-coated roof rails (with 220-lb roof load capacity). Front and rear tow hooks.

LOCKING AND SECURITY

- ● ● Radio-frequency remote central locking system with rolling-code signal for protection from transmitter cloning.
- ● ● 4-button remote integrates folding key and can selectively unlock driver's door and fuel filler only, unlock tailgate only, or globally unlock/lock all doors, tailgate and fuel filler. Turn signals flash once to confirm unlocking, three times for locking.
- ● ● Removing key from ignition disables engine computer to help prevent unauthorized starting of the engine.
- ● ● Driveaway locking can be programmed to automatically lock all the doors when the vehicle reaches 9 mph.
- ● ● Night security illumination uses the vehicle's exterior lights to help illuminate a path after parking.
- ● ● Locator lighting uses the vehicle's exterior lights to help light a return path when the vehicle is remote-unlocked. Unlocking vehicle also activates illuminated entry system.
- ● ● Automatic antitheft alarm system with glass-breakage sensor, towaway protection, remote panic feature, and automatic notification via Tele Aid.³
- ● ● Integrated 3-button garage door control, compatible with HomeLink[®] components and some other systems.

● STANDARD ○ OPTIONAL — NOT AVAILABLE

¹ Some options are available only as part of Option Packages or the Inspiration Editions. Some options require other options. See listing on following page. ² Included with Inspiration Editions. ³ First year's Tele Aid service is provided at no additional cost with subscription and includes 30 minutes airtime (including required acquaintance call). Subscription is required for service to be active. Tele Aid operates only where cellular and GPS coverage are available. Owner must authorize stolen vehicle tracking and file a police report.



ML 350
ML 500
ML 55 AMG

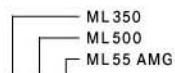
INTERIOR FEATURES

- ● ● CFC-free automatic climate control with sun sensor and electrostatic dust filter. REST mode can ventilate cabin or help keep cabin warmer using residual heat for up to 30 minutes after vehicle is turned off.
- ● ● In-dash control panel allows selection of cabin temperature plus individual front and rear-cabin selection of automatic/manual airflow direction and automatic/manual blower speed.
- ● ● Auxiliary control panel at rear of front center console allows 2nd-row passengers to select automatic/manual airflow direction and automatic/manual blower speed for rear cabin.
- ● ● Adjustable rear-cabin air vents at rear of front center console. Rear-cabin air ducts under front seats.
- ● ● Power windows, all with one-touch express-up/down.
- ¹ ○¹ ● Power rear-quarter vent windows with dash-mounted remote controls.
- ● ● Tilt steering column.
- ● ● Electronic cruise control.
- ¹ ● ● Auto-dimming rearview mirror with dual map lamps. Shifting to Reverse or switching on interior lamps automatically cancels dimming.
- ● ● Delayed-fadeout courtesy lamps for first two rows of seating, with master shutoff switch. Four individual overhead reading lamps. Cargo-area courtesy lamp with 3-way switch (on/off/aut.). Dual illuminated visor vanity mirrors. Entrance lamps in all four doors.
- ● ● 12-volt power outlets below dash, in cargo area, and with lighters in front and rear ashtrays.
- ● ● Front center armrest with two-level enclosed storage. Storage pockets in dash, all four doors and at front of center console. Magazine pockets on front seatbacks.
- ● ● Two retractable front cupholders at either end of dash. Single large cupholder in center console. Retractable dual cupholders for 2nd seating row, in rear of front center console.
- ● ● Four overhead passenger assist grips.
- ¹ ● ● Lockable drawer-type safebox concealed under front passenger seat.
- ● ● Retractable/removable cargo cover (deleted when optional Third-row Seating Package M7 is ordered).
- ● ● Floor-mounted cargo tie-downs.

SEATING AND TRIM

- — — 6-way manually adjustable front seats with 4-way manually adjustable head restraints.
- ¹ ● ● 8-way power front seats with 4-way manually adjustable head restraints.
- ¹ ○¹ ● 3-position memory system for each front seat (driver's seat memory also includes settings for outside mirrors).
- ● ● Heated front seats.
- ² ○² ● Sport front seats.
- ● ● 60/40-split folding 2nd-row seats with three 4-way head restraints and folding center armrest. Seatbacks can be folded, and seats can be lowered flush with cargo floor. Seats can also be shifted forward to expand cargo area while carrying passengers, or to provide additional knee room for passengers in optional 3rd-row seat.
- — — Cloth upholstery.
- ¹ ● ● Leather upholstery, including seating surfaces, seat side panels, head restraints and gathered door trim inserts.
- — ● AMG-design Charcoal deep-grain leather upholstery.
- — — Hand-polished burl walnut wood trim on doors, console and shift gate.
- — ● Hand-polished black burl walnut wood trim on doors, console and shift gate.
- ¹ ● ● Wood trim on console rolltop cover and rear climate control panel.
- — — Leather-trimmed steering wheel and shift knob.
- — — Leather-trimmed steering wheel. Burl walnut shift knob.
- — ● Leather and black burl walnut trimmed steering wheel and shift knob. Leather-trimmed shift-gate surround.
- ● ● Brushed stainless-steel door-sill trim. Velour carpeting, including cargo floor. Carpeted floor mats.
- — ● Exclusive ML 55 AMG floor mats.

2003 M-Class equipment



AUDIO AND COMMUNICATIONS

- ● ● Modular Control System (MCS) integrates a single in-dash control center with a 5" color-LCD screen and multifunction operating panel for each of the following MCS elements and the integrated accessories listed separately at right.
- ● ● MCS AM/FM stereo/weatherband radio with scan and dual-sensitivity seek tuning.
- ● ● MCS autoreverse cassette player with music search, concealed behind screen.
- ¹ ● ● ● MCS onboard navigation system, which uses Global Positioning System (GPS) satellites to determine the current location of your vehicle, and a map database for the U.S. and Canada on a single DVD-ROM.² Single-disc in-dash DVD-ROM drive can play music CDs when system is not navigating.
- ● ● 6-speaker audio system.
- ³ ○³ ● ● Bose® sound system with 9 speakers plus Acoustimass® underseat subwoofer. Bose AudioPilot™ digital processing helps compensate for unwanted ambient noise with no perceived change in audio volume.
- ● ● Tele Aid uses GPS satellites to determine the current location of your car, plus a cellular link to provide 24-hour contact with Mercedes-Benz for emergency aid (SOS button), information (i-button) or Roadside Assistance (wrench button). Automatic Collision Notification engages SOS function if an air bag or Emergency Tensioning Device (ETD) deploys. Tele Aid also includes Automatic Alarm Notification (which alerts Mercedes-Benz to contact you if the antitheft alarm is set off), stolen vehicle tracking, and remote keyless unlocking service.⁴
- ● ● Tele Aid Concierge Service, standard with basic Tele Aid subscription, offers personal services via the i-button, including arrangements for restaurant, hotel, airline or car-rental reservations, tickets to cultural and sporting events or tourist attractions, and delivery of flowers or gifts.⁴

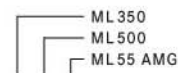
RESTRAINT SYSTEMS

- ● ● Integrated Restraint System: Driver and front passenger are each provided with a front air bag with dual deployment levels, a door-mounted side-impact air bag, and a 3-point seat belt with an Emergency Tensioning Device (ETD) and belt force limiter.⁵ Outboard 2nd-row passengers are each provided with a door-mounted side-impact air bag and a 3-point seat belt with ETD. Center 2nd-row seat and optional 3rd-row seats are each provided with a 3-point seat belt.
- ● ● Head Protection Curtains: In a side impact exceeding a preset threshold, a multi-chamber air bag deploys to cover the front and rear side-door glass on the affected side of the vehicle.
- ● ● Front and outboard 2nd-row seat belts include height-adjustable shoulder belts and lower points attached to seat frames.
- ● ● Occupancy sensor prevents the front passenger's front and side-impact air bags from deploying if the seat is unoccupied. An ETD will not deploy if seat belt is unfastened.
- ● ● Universal LATCH system (Lower Anchors and Tethers for Children) and selectable passenger seat-belt retractors help secure child seats.⁶
- ● ● Each occupant is provided with a head restraint that adjusts up-down and fore-aft.

INSTRUMENTATION

- ● ● Electronic analog speedometer, tachometer, fuel gauge and coolant temperature gauge.
- ● ● Ivory-color AMG instrument faces with chrome rings.
- ● ● Electronic digital odometer, resettable trip meter, quartz clock, outside temperature indicator, and display of Touch Shift gear selection.
- ● ● Flexible Service System calculates and displays distance remaining to next basic maintenance service based on actual driving conditions, some indicators of oil condition, and engine loads, rpm and operating temperatures.
- ³ ● ● ● Digital trip computer in overhead console can display compass, date, elapsed time, instantaneous or average fuel economy, or remaining driving distance on fuel in tank. Display can be set to metric or U.S. units.
- ● ● Warning lights for low fuel level, low coolant level, brake-pad wear, and low washer fluid level. Audible reminders to release parking brake and to switch off headlights.

● STANDARD ○ OPTIONAL — NOT AVAILABLE



OPTION PACKAGES (All packages require Sunroof Package M5.)

- ⁶ ● ● ● **Luxury Package M1:** 8-way power front seats. Leather upholstery on seats and door trim inserts. Burl walnut trim on console rolltop cover and rear climate control panel. Privacy glass for rear doors, rear quarters and liftgate.
- — ● ● ● **ML 350 Convenience Package M2:** All items in Luxury Package M1, plus: 3-position memory system for each front seat and outside mirrors. Parking-assist right-side mirror. Power fold-in for side mirrors. Auto-dimming left-side mirror. Auto-dimming inside rearview mirror with dual map lamps. Digital trip computer with compass. Concealed lockable safebox. Rain-sensing intermittent wipers.
- ○⁶ — ● ● ● **ML 500 Convenience Package M3:** 3-position memory system for each front seat and outside mirrors. Power fold-in for side mirrors. Rain-sensing intermittent wipers.
- ○ ● ● ● **Sunroof Package M5:** Power tilt/sliding tinted glass sunroof. Power rear-quarter vent windows with dash-mounted controls.
- ⁸ ○⁸ — ● ● ● **Sport Package M6:** 17" EVO II wheels with 275/55R17 tires. Sculpted color-keyed bumpers, fender flares, side cladding and tailgate filler panel. Round front foglamps. Chrome exhaust tip.
- ○ — ● ● ● **Third-row Seating Package M7:** Dual fold-up 3rd-row seats with seat belts and head restraints. (Package deletes cargo cover. Upholstery matches front seats.)

INDIVIDUAL OPTIONS

- ○ ● ● Bi-Xenon High Intensity Discharge low-beam and high-beam headlamps. High-pressure headlamp washers.
- ○ ○ Parktronic audio-visual parking assistance system. Sensors use sound waves to help detect nearby obstacles at parking speeds, and audio-visual indicators on dash and rear-cabin ceiling alert the driver to their proximity and direction.
- ● ● ● Heated front seats. (Option requires Luxury Package M1 or Convenience Package M2 on ML 350.)
- ○ — Bose AudioPilot digital sound system. MCS-integrated 6-disc CD changer concealed behind cargo-area sidewall.
- ○ ○ Metallic paint. (No extra charge on Inspiration Editions and ML 55 AMG.)

MODULAR CONTROL SYSTEM (MCS) ACCESSORIES

- ¹ ● ● ● MCS onboard GPS satellite navigation system with single in-dash DVD-ROM drive that can play audio CDs when system is not navigating. (Dealer-installed on ML 350.)
- ¹ — ○ — MCS in-dash single-CD player, concealed behind screen. (Dealer-installed.)
- ○ ○ MCS-integrated 6-disc CD changer. (Dealer-installed, concealed behind cargo-area sidewall.)
- ○ ○ MCS-integrated Motorola V60™ dual-band digital portable telephone with or without voice control system for operation of commonly used telephone and audio system features. (Dealer-installed.)

M-CLASS INSPIRATION EDITIONS

- ○ — Silver-painted grille with chrome ribs. Charcoal leather upholstery with silver top-stitching on seats, steering wheel, door trim, front center armrest and shift-gate surround. Dark poplar wood trim. Sport front seats. Chrome-ringed instruments with white indicators. Charcoal floor mats with silver edging and Inspiration logos.
ML 350 Inspiration Edition also includes 6-spoke wheels with simulated two-piece design, plus Luxury Package M1 or Convenience Package M2.
ML 500 Inspiration Edition also includes Convenience Package M3.

M-CLASS *designo* EDITIONS

- ⁹ ○⁹ — **Sable Edition:** Black paint. Java interior with two-tone Java/Borneo Nappa leather on seats, doors, steering wheel and shift knob. Natural poplar wood trim. Borneo floor mats with Java leather trim.
- ⁹ ○⁹ — **Mystic Green Edition: *designo*** Mystic Green metallic paint. Java interior with two-tone Java/Borneo Nappa leather on seats, doors, steering wheel and shift knob. Natural poplar wood trim. Borneo floor mats with Java leather trim.
- ⁹ ○⁹ ○ **Cognac Edition: *designo*** Bourbon metallic paint. Charcoal interior with two-tone Charcoal/Cognac Nappa leather on seats, doors, steering wheel and shift knob. Natural poplar wood trim. Charcoal floor mats with Cognac leather trim.
- ⁹ ○⁹ — **Savanna Edition:** Desert Silver metallic paint. Java interior with two-tone Java/Borneo Nappa leather on seats, doors, steering wheel and shift knob. Natural poplar wood trim. Borneo floor mats with Java leather trim.
- ⁹ ○⁹ — **Pearl Edition:** Alabaster White paint. Java interior with two-tone Java/Borneo Nappa leather on seats, doors, steering wheel and shift knob. Natural poplar wood trim. Borneo floor mats with Java leather trim.
- ⁹ ○⁹ ○ **Alternate interior choice for all *designo* editions:** Charcoal interior with Charcoal Nappa leather on seats, doors, steering wheel and shift knob. Natural poplar wood trim. Charcoal floor mats with Charcoal leather trim.

¹ Accessory navigation system and single-CD player modules may not be ordered together. ² DVD-ROM maps do not cover all areas nor all routes within an area. One U.S./Canada DVD-ROM is included with vehicle. ³ Some options are available only as part of Option Packages or the Inspiration Editions. Some options require other options. See listing at right. ⁴ First year's Tele Aid service is provided at no additional cost with subscription and includes 30 minutes airtime (including required acquaintance call). Subscription is required for service to be active. Tele Aid only operates where cellular and GPS coverage are available. Owner must authorize stolen vehicle tracking and file a police report. ⁵ **WARNING: THE FORCES OF A DEPLOYING AIR BAG CAN CAUSE SERIOUS OR FATAL INJURY TO A CHILD UNDER AGE 13. THE SAFEST SEATING POSITION FOR YOUR CHILD IS IN THE REAR SEAT, BELTED INTO AN APPROPRIATE, PROPERLY INSTALLED CHILD SEAT, OR CORRECTLY WEARING A SEAT BELT IF TOO LARGE FOR A CHILD SEAT. A CHILD UNDER 13 MUST NOT USE THE FRONT SEAT UNLESS THE CHILD IS BELTED INTO AN APPROPRIATE, PROPERLY INSTALLED BABYSMART-COMPATIBLE CHILD SEAT. A CHILD UNDER 13 WHO IS TOO LARGE FOR A CHILD SEAT MUST NOT USE THE FRONT SEAT. SEE OPERATOR'S MANUAL FOR ADDITIONAL WARNINGS AND INFORMATION ON AIR BAGS, SEAT BELTS AND CHILD SEATS.** ⁶ Included with Inspiration Editions. ⁷ All items in Convenience Package M3 are standard on ML 55 AMG. ⁸ Not available with Inspiration Editions. ⁹ M-Class *designo* editions are not available with Sport Package M6 or Inspiration Editions. ML 350 *designo* editions require optional heated front seats, Luxury Package M1 or Convenience Package M2, and Sunroof Package M5.