



Innovation  
that excites

2017  
**QASHQAI®**







**TAKE ON** adventures downtown and weekends out of town with progressive style, a commanding point of view, and available tech that helps watch out for you. Merge into traffic with complete confidence. No detours, potholes, or street-parking-only restaurants can hold you back. The brand-new 2017 Nissan Qashqai.<sup>®</sup> Built around you, fit for **YOUR CITY.**

Nissan Qashqai<sup>®</sup> SL AWD shown in Nitro Lime.



## SMART PREMIUM

The intuitively laid-out Qashqai® interior is designed to keep up with your life, while generous head and leg room keep the crew happy on longer trips. And thoughtful details, like stitching on the seats and doors, give the space a handcrafted feel.

Nissan Qashqai® SL AWD shown in Light Grey Leather.

Leather-appointed  
Seats<sup>1</sup>

Sporty D-shaped Heated  
Steering Wheel<sup>1</sup>

Quick Comfort®  
Heated Front Seats

Nissan Intelligent Key®  
with Remote Engine  
Start System<sup>1,2</sup>

Power Sliding  
Moonroof<sup>1</sup>

<sup>1</sup>Available feature. <sup>2</sup>Provincial laws may apply; review local laws before using.



# STREET-SAVVY, ADVENTURE-READY

## INTELLIGENT CRUISE CONTROL

Keep pace with the flow of traffic with just the push of a button. Unlike traditional systems that only maintain a set speed, Intelligent Cruise Control also helps maintain an adjustable set distance between you and the car in front of you. As traffic slows down or speeds up, Qashqai® can respond accordingly.<sup>1,2</sup>



NISSAN INTELLIGENT MOBILITY



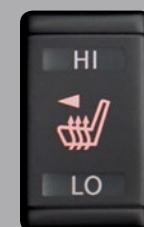
## INTELLIGENT ALL-WHEEL DRIVE

Intelligent All-Wheel Drive is so responsive, it can adapt to changing conditions 30 times faster than the blink of an eye. Snow, rain-covered pavement, or tight turns, the system automatically sends power to the wheels that need it most.<sup>1</sup>

## ECO MODE AND SPORT STEERING

Qashqai gives you the power to switch things up. Low on gas and late for work? Eco Mode adjusts engine and transmission response to maximize fuel efficiency. And for those days you just want to play, activating sport steering sharpens steering response to rev up your senses.

## COLD-WEATHER FEATURES



**QUICK COMFORT® HEATED FRONT SEATS**  
Standard Quick Comfort® heated front seats not only take the edge off a chilly morning, they feel great on your back in any weather.



**HEATED STEERING WHEEL**  
Gone are the days of leaving your gloves on in the car, thanks to the heated steering wheel.<sup>1</sup>



**REMOTE ENGINE START SYSTEM WITH INTELLIGENT CLIMATE CONTROL**  
On hot days, the Remote Engine Start System with Intelligent Climate Control can adjust temperature and airflow for a quick cool-down.<sup>1,3</sup>

On cold days, the system can adjust airflow to warm up the cabin, defrost windows and windshield, and even turn on the heated steering wheel and outside mirrors.<sup>1,3</sup>



U.S. instrumentation shown.

<sup>1</sup>Available feature. <sup>2</sup>Intelligent Cruise Control is not a collision avoidance system or warning device. Designed to use limited braking. Failure to apply the brakes could result in an accident. <sup>3</sup>Provincial laws may apply; review local laws before using.



# NISSAN INTELLIGENT MOBILITY

## A BOLDER RIDE THROUGH LIFE

Nissan Intelligent Mobility transforms your Qashqai® into a responsive partner, for a more connected, confident and thrilling drive.

### Automatic Emergency Braking with Pedestrian Detection

Automatic Emergency Braking with Pedestrian Detection monitors your speed and distance between you and the car ahead, and can let you know if you need to slow down. It can even automatically engage the brakes to help avoid a collision or lessen the severity of an impact. And when it detects a pedestrian in the crosswalk, it can stop you in your tracks.<sup>1,2</sup>

### Blind Spot Warning (BSW)

Blind Spot Warning helps you change lanes with confidence. It keeps an eye on the blind spot area and gives you a heads-up if it detects a vehicle hiding there.<sup>1,3</sup>

### Rear Cross Traffic Alert (RCTA)

Rear Cross Traffic Alert helps you back out of a space more safely. It watches around the rear of your Qashqai, and can warn you about cars it detects creeping up on you from either side.<sup>1,4</sup>

### Lane Departure Warning (LDW)/Intelligent Lane Intervention

Lane Departure Warning helps makes sure you change lanes only when you mean to. If LDW detects that you're unintentionally drifting over, it'll give you a heads-up. Intelligent Lane Intervention helps keep you in your lane. It taps the brakes to help gently guide you back if it detects that you're unintentionally straying out of your lane for too long.<sup>1,5</sup>



### SIRI® EYES FREE

Unleash the power of your Siri-equipped iPhone® with Siri® Eyes Free. Ask about the weather, make calls, send texts, update your calendar, and more – at the touch of a button.<sup>1,6,7</sup>

U.S. instrumentation shown.



### CALM, COOL, CONNECTED

NissanConnect<sup>SM</sup> with Navigation, Mobile Apps, and Services bring your hand-picked music, favourite apps, and more all come along, working seamlessly with your compatible smartphone and Qashqai's 178 mm (7.0") colour touchscreen. And with Bluetooth® streaming, and USB connectivity, you're never out of the loop.<sup>1,8,9</sup>

### DIVIDE-N-HIDE®

Reversible cargo-floor panels adjust easily to provide multiple configurations, while the back seats fold down flat to accommodate larger gear, giving you space for your daily essentials and weekend getaways.<sup>10</sup>



### INTELLIGENT AROUND VIEW® MONITOR

Squeeze into that spot with your pride and rims intact. The Intelligent Around View Monitor uses four cameras to give you a virtual composite, 360° bird's-eye view of your vehicle, with selectable split-screen close-ups of the front, rear, and curbside views.<sup>1,11,12</sup>

U.S. model shown.



<sup>1</sup>Available feature(s). <sup>2</sup>Automatic Emergency Braking with Pedestrian Detection is not a replacement for responsible driving. May not provide warning or braking in certain conditions. Speed and other limitations apply. See Owner's Manual for details. <sup>3</sup>Blind Spot Warning is not a substitute for proper lane change procedures. The system will not prevent contact with other vehicles or accidents. It may not detect every vehicle or object around you. <sup>4</sup>Not a substitute for proper backing procedures. May not detect all moving vehicles. Speed and other limitations apply. See Owner's Manual for details. <sup>5</sup>Intelligent Lane Intervention and Lane Departure Warning operate only when the lane markings are clearly visible. Speed and other limitations apply. See Owner's Manual for details. <sup>6</sup>Driving is serious business and requires your full attention. Only use feature when safe to do so. Compatible smartphone required. Availability of specific feature is dependent upon the phone's Bluetooth® support. Please refer to your phone Owner's Manual for details. Bluetooth® word mark and logos are owned by Bluetooth SIG, Inc. and any use of such marks by Nissan is under licence. See Nissan.ca for details. Text rates and/or data usage may apply. Certain services, including Siri®, are provided by independent companies not within Nissan's control. Should service provider terminate/restrict service, service may be suspended or terminated without notice or liability to Nissan and/or its agents. Nissan not responsible for any equipment replacement or upgrades, or associated costs, that may be required for continued operation due to service changes. Siri® and Siri® Eyes Free are registered trademarks of Apple, Inc. <sup>7</sup>Availability of specific features is dependent upon the phone's Bluetooth® support. Please refer to your phone Owner's Manual for details. Bluetooth® word mark and logos are owned by Bluetooth SIG, Inc., and any use of such marks by Nissan is under licence. <sup>8</sup>Driving is serious business. Only use NissanConnect<sup>SM</sup> Services powered by SiriusXM® when safe to do so. Late availability for some features. Services, including automatic crash notification and SOS, are dependent upon the telematics device being in an operative condition, its ability to connect to a wireless network, compatible wireless network availability, navigation map data, and GPS satellite signal reception, the absence of which can limit or prevent the ability to reach NissanConnect<sup>SM</sup> Customer Care or receive support. Never program while driving. GPS mapping may not be detailed in all areas or reflect current road status. You are responsible for using Remote Horn features in accordance with any laws, rules or ordinances in effect in your vehicle's location. Cellular network not available in all areas and/or available at all times. Cellular technology is evolving, and changes to cellular networks provided by independent companies are not within Nissan's or Sirius XM Radio Inc.'s control. Neither Nissan nor Sirius XM are responsible for associated costs that may be required for continued operation due to cellular network termination (including equipment upgrades, if available, or roaming charges on alternative networks). Should cellular provider terminate/restrict service, service may be terminated without notice and with no liability to Nissan, SiriusXM and/or their respective agents or affiliates. Certain services require a PIN for activation. Subscription Agreement required and terms and conditions of Subscription Agreement apply. See Nissan.ca/connect for details. Enrollment is required to receive full suite of services. Six (6) month trial period begins on your date of vehicle purchase or lease of a new Nissan; subsequently a paid subscription is required at the then current rate to continue to receive services. Text rates and/or data usage may apply. <sup>9</sup>Driving is serious business and requires your full attention. If you have to use the connected device while driving, exercise extreme caution at all times so full attention may be given to vehicle operation. Smartphone or other external device not included. <sup>10</sup>Cargo and load capacity limited by weight and distribution. Always secure all cargo. Heavy loading of the vehicle with cargo, especially on the roof, will affect the handling and stability of the vehicle. <sup>11</sup>Parking aid/convenience feature. Cannot completely eliminate blind spots. May not detect every object and does not warn of moving objects. Always check surroundings and turn to look behind you before moving vehicle. <sup>12</sup>Virtual composite 360° view.



## PAINT AND FABRIC



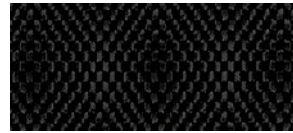
Light Grey Cloth  
S



Charcoal Cloth  
S



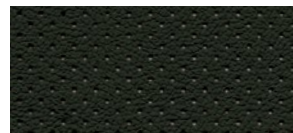
Light Grey Cloth  
SV



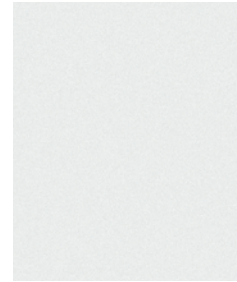
Charcoal Cloth  
SV



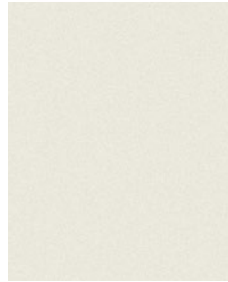
Light Grey Leather  
SL



Charcoal Leather  
SL



Glacier White<sup>1</sup> QAK



Pearl White<sup>1</sup> QAB

	S	SV	SL	S	SV	SL
LIGHT GREY CLOTH						
LIGHT GREY LEATHER						
CHARCOAL CLOTH	■				■	
CHARCOAL LEATHER						■

■ Standard

Nissan has taken care to ensure that the colour swatches presented here are the closest possible representations of actual vehicle colours. Swatches may vary slightly due to the printing process and whether viewed in daylight, fluorescent or incandescent light. Please see the actual colours at your local Nissan dealer.



Gun Metallic<sup>1</sup> KAD



Monarch Orange<sup>1</sup> EBB



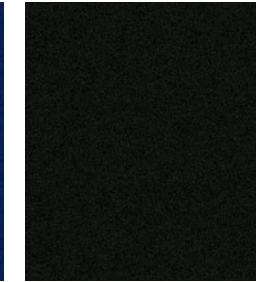
Palatial Ruby<sup>1</sup> NBF



Nitro Lime<sup>1</sup> EBA



Caspian Blue<sup>1</sup> RBY



Magnetic Black<sup>1</sup> G41

	S	SV	SL	S	SV	SL	S	SV	SL	S	SV	SL	S	SV	SL	S	SV	SL	
GUN METALLIC																			
MONARCH ORANGE																			
PALATIAL RUBY																			
NITRO LIME																			
CASPIAN BLUE																			
MAGNETIC BLACK																			

## GENUINE NISSAN ACCESSORIES

Every Genuine Nissan Accessory is: custom-fit, custom-designed and durability-tested; available for finance and backed by Nissan's 3 year/60,000 km Accessories limited warranty when installed by dealer at time of your vehicle purchase?

### A. 17" Aluminum-alloy Wheels

Cruise with some attitude.

Additional Accessories:

- All-season Floor Mats
- LED Fog Lights
- Illuminated Kick Plates
- Interior Accent Lighting
- Front Lip Finisher
- Rear Glass Finisher
- Frameless Rear View Mirror
- Frameless Prizm Rear View Mirror
- And More

### B. Chrome Rear Bumper Protector

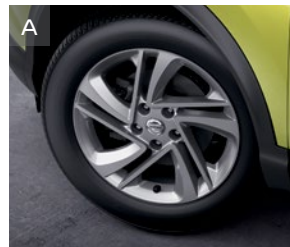
Helps protect bumper from nicks and scratches

### C. Roof Rail Crossbars<sup>3</sup>

Transfer the weight from your shoulders to your roof.

### D. Door Side Sill Strips

The stylish way to protect against dings.



See your Nissan dealer for details, or go to [accessories.nissan.ca](http://accessories.nissan.ca)

## BUYING AND OWNING

**Finance Options** Through Nissan Canada Finance, we offer many attractive lease and loan options that can be tailored to your individual needs. We have unique programs such as the Nissan Grad Program, Loyalty Program or the Nissan Advantage Program. Please visit our website [Nissan.ca/finance](http://Nissan.ca/finance) to explore all of the options available. We have also made it easy to pre-qualify online. All of our programs come with competitive rates and terms. With our flexible options, driving home a new Nissan has never been easier. Consult your local Nissan Dealership for complete details.

**No-Nonsense Warranty** Every 2017 Nissan is covered by a 3 year/60,000 km<sup>4</sup> Comprehensive New Vehicle Warranty, a 5 year/100,000 km<sup>4</sup> Powertrain Warranty, an 8 year/130,000 km<sup>4</sup> Emission Control Warranty on selected components, and a 5 year/unlimited km Corrosion Perforation Warranty. As a Nissan owner, you'll also receive a 3 year Roadside Assistance program available to you 24 hours a day. Terms, conditions and exclusions apply. See your Warranty Information Booklet for complete details.

<sup>1</sup>Extra cost option. <sup>2</sup>See your Nissan Dealership and read the actual limited warranty. <sup>3</sup>Cargo and load capacity limited by weight and distribution. Always secure all cargo. Heavy loading of the vehicle with cargo, especially on the roof, will affect the handling and stability of the vehicle. <sup>4</sup>Whichever occurs first.

**Added Security Plan (ASP)** For ultimate peace of mind, consider the Nissan Added Security Plan. It's our commitment to be there for you, and to help you leave your worries behind. Different plans, available for both purchased and leased vehicles, let you tailor the coverage to your driving habits.

**Security+Plus™ Prepaid Maintenance Plan** The smart choice when it comes to maintaining your new Nissan. Honoured at all participating Nissan Dealers in Canada and the U.S., your vehicle is cared for by factory-trained technicians using Genuine Nissan Parts. And best of all, there's no worrying about price increases on parts or service in the future. A variety of plans are available. Ask your Dealer for details.



Nissan's environmental action plan focuses on several key areas. In addition to increasing production of Zero Emission vehicles like the 100% electric LEAF®, we're improving fuel efficiency across our lineup, and reducing the environmental impact of manufacturing through energy-efficient practices in our plants.

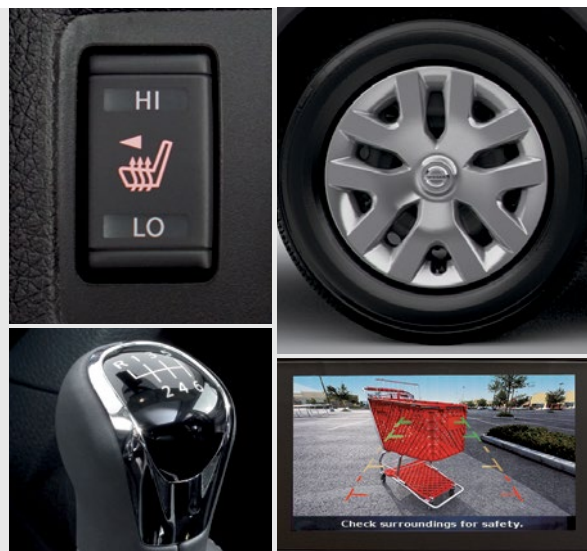




## CHOOSE YOUR TRIM LEVEL

### S MANUAL TRANSMISSION

- 2.0-litre DOHC 16-valve 4-cylinder engine
- 6-speed manual transmission
- Electronic parking brake
- Front-Wheel Drive (FWD)
- Active Ride Control
- Intelligent Trace Control<sup>1</sup>
- 16" Steel wheels with wheel covers
- P215/65R16 all-season tires
- LED Daytime Running Lights with LED signature
- Rear spoiler
- Power heated outside mirrors with LED turn signal indicators
- Advanced Drive-Assist<sup>®</sup> Display<sup>2,3</sup>
- Siri<sup>®</sup> Eyes Free<sup>4</sup>
- Hands-free text messaging assistant<sup>5</sup>
- Bluetooth<sup>®</sup> Hands Free Phone System and streaming audio<sup>6</sup>
- RearView Monitor<sup>7</sup>
- Integrated key with remote keyless entry
- Tilt and telescoping steering column
- Illuminated steering wheel-mounted controls
- Variable intermittent front and intermittent rear windshield wipers
- 12-volt DC power outlet
- Cargo tie-down hooks (six)<sup>8</sup>
- Cargo cover
- 6-way manual driver's seat
- Quick Comfort<sup>®</sup> heated front seats
- 60/40 2nd-row split folding seat
- Cloth seat trim
- AM/FM/CD audio system with 127 mm (5.0") colour display and four speakers
- USB connection port for iPod<sup>®</sup> interface and other compatible devices<sup>9</sup>
- Vehicle Dynamic Control (VDC)<sup>10</sup> with Traction Control System (TCS)
- Tire Pressure Monitoring System (TPMS) with Easy-Fill Tire Alert<sup>11,12</sup>
- Nissan Advanced Airbag System<sup>13</sup>



### S CVT INCLUDES S MANUAL TRANSMISSION EQUIPMENT PLUS:

- Xtronic CVT<sup>®</sup> (Continuously Variable Transmission) with manual shift mode
- Available Intelligent All-Wheel Drive (AWD)
- Intelligent Engine Brake
- 17" Aluminum-alloy wheels
- P215/60R17 all-season tires
- Cruise control with steering wheel-mounted controls
- Foot-style parking brake
- Rear seat heating/cooling vents



### SV INCLUDES S CVT EQUIPMENT PLUS:

- Available Intelligent All-Wheel Drive (AWD)
- Automatic on/off headlights
- Fog lights
- Power sliding glass moonroof with one-touch open/close and tilt feature
- Nissan Intelligent Key<sup>®</sup> with Push Button Ignition
- Chrome interior door handles
- Remote Engine Start System with Intelligent Climate Control<sup>14</sup>
- Dual Zone Automatic Temperature Control (ATC)
- Divide-N-Hide<sup>®</sup> Cargo System<sup>8</sup>
- Dual illuminated visor vanity mirrors
- SiriusXM<sup>®</sup> Satellite Radio<sup>15</sup>
- Heated leather-wrapped steering wheel
- Leather-wrapped shift knob
- Six speakers



### SL INCLUDES SV EQUIPMENT PLUS:

- 19" Aluminum-alloy wheels
- P225/45R19 all-season tires
- Roof rails
- NissanConnect<sup>SM</sup> with Navigation and Mobile Apps<sup>16</sup>
- 178 mm (7.0") colour touch-screen display
- Nissan Voice Recognition for audio and navigation<sup>17</sup>
- Intelligent All-Wheel Drive
- SiriusXM<sup>®</sup> Traffic and Travel Link<sup>15</sup>
- Intelligent Around View<sup>®</sup> Monitor<sup>18</sup>
- 6-way power driver's seat with 2-way power lumbar
- Leather-appointed seats
- Front seatback pockets

### KEY AVAILABLE PACKAGES:

- Platinum Package



### SL PLATINUM PACKAGE INCLUDES SL EQUIPMENT PLUS:

- LED headlights
- High Beam Assist
- NissanConnect with Navigation, Mobile Apps, and Services<sup>16</sup>
- Intelligent Cruise Control (ICC)<sup>19</sup>
- Automatic Emergency Braking with Pedestrian Detection<sup>20</sup>
- Blind Spot Warning (BSW)<sup>21</sup>
- Lane Departure Warning (LDW) and Intelligent Lane Intervention<sup>22</sup>
- Rear Cross Traffic Alert (RCTA)<sup>23</sup>



<sup>1</sup>Intelligent Trace Control cannot prevent accidents or loss of control. It is the driver's responsibility to be in control of the vehicle at all times. <sup>2</sup>Driving is serious business and requires your full attention. If you have to use the feature while driving, exercise extreme caution at all times so full attention may be given to vehicle operation. <sup>3</sup>Information displayed is dependent on how vehicle is equipped. <sup>4</sup>Driving is serious business and requires your full attention. Only use feature when safe to do so. Compatible smartphone required. Availability of specific feature is dependent upon the phone's Bluetooth<sup>®</sup> support. Please refer to your phone Owner's Manual for details. Bluetooth<sup>®</sup> word mark and logos are owned by Bluetooth SIG, Inc. and any use of such marks by Nissan is under licence. See [Nissan.ca](http://Nissan.ca) for details. Text rates and/or data usage may apply. Certain services, including Siri<sup>®</sup>, are provided by independent companies not within Nissan's control. Should service provider terminate/restrict service, service may be suspended or terminated without notice or liability to Nissan and/or its agents. Nissan not responsible for any equipment replacement or upgrades, or associated costs, that may be required for continued operation due to service changes. Siri<sup>®</sup> and Siri<sup>®</sup> Eyes Free are registered trademarks of Apple, Inc. <sup>5</sup>Use the text messaging feature after stopping your vehicle in a safe location. If you have to use the feature while driving, exercise extreme caution at all times so full attention may be given to vehicle operation. Compatible smartphone required. Text rates and/or data usage may apply. <sup>6</sup>Availability of specific features is dependent upon the phone's Bluetooth<sup>®</sup> support. Please refer to your phone Owner's Manual for details. Bluetooth<sup>®</sup> word mark and logos are owned by Bluetooth SIG, Inc. and any use of such marks by Nissan is under licence. <sup>7</sup>Parking aid/convenience feature. Cannot completely eliminate blind spots. May not detect every object and does not warn of moving objects. Always check surroundings and turn to look behind you before moving vehicle. <sup>8</sup>Cargo and load capacity limited by weight and distribution. Always secure all cargo. Heavy loading of the vehicle with cargo, especially on the roof, will affect the handling and stability of the vehicle. <sup>9</sup>Driving is serious business and requires your full attention. If you have to use the connected device while driving, exercise extreme caution at all times so full attention may be given to vehicle operation. iPod<sup>®</sup> is a registered trademark of Apple, Inc. All rights reserved. iPod<sup>®</sup> or other external device not included. <sup>10</sup>VDC, which should remain on when driving except when freeing the vehicle from mud or snow, cannot prevent accidents due to abrupt steering, carelessness, or dangerous driving techniques. <sup>11</sup>TPMS is not a substitute for regular tire pressure checks. <sup>12</sup>Vehicle must be on for the Easy-Fill Tire Alert to operate. <sup>13</sup>Airbags are only a supplemental restraint system; always wear your seat belt. Even with the occupant-classification sensor, rear-facing child restraints should not be placed in the front-passenger's seat. Also, in addition to any other requirement of applicable law, all children 12 and under should ride in the rear seat properly secured in child restraints, booster seats, or seat belts according to their size. Airbags will only inflate in certain accidents; see your Owner's Manual for more details. <sup>14</sup>Provincial laws may apply; review local laws before using. <sup>15</sup>XM<sup>®</sup> and SiriusXM<sup>®</sup> Satellite Radio is available in the 10 Canadian provinces and the 48 contiguous United States. Basic monthly subscription required and sold separately after 90-day trial period. NavTraffic<sup>®</sup>/SiriusXM<sup>®</sup> Traffic is available in select North American markets. In Canada, at time of printing, incident and flow data is available for 12 metropolitan areas of Canada (Vancouver, Calgary, Edmonton, Toronto, Ottawa, Montreal, Quebec City, Hamilton, St. Catharines, Kitchener, Guelph, and London). Subscription sold separately after trial period. All subscriptions subject to customer agreement at [siriusxm.ca/terms](http://siriusxm.ca/terms). Fees and programming subject to change. ©2017 Sirius XM Canada Inc. The Sirius<sup>®</sup>, XM<sup>®</sup>, and SiriusXM<sup>®</sup> names and all related marks and logos are trademarks of Sirius XM Radio Inc. All other trademarks are the property of their respective owners. <sup>16</sup>Driving is serious business. Only use NissanConnect<sup>SM</sup> Services powered by SiriusXM<sup>®</sup> and NissanConnect<sup>SM</sup> Mobile Apps when safe to do so. NissanConnect<sup>SM</sup> Services and Mobile Apps availability is dependent on vehicle model, trim level, packaging, and/or options. See [Nissan.ca/NissanConnect](http://Nissan.ca/NissanConnect) for complete availability details. Late availability for some features. Compatible smartphone required to operate NissanConnect<sup>SM</sup> Mobile Apps. NissanConnect<sup>SM</sup> Services, including automatic crash notification and SOS, are dependent upon the telematics device being in operative condition, its ability to connect to a wireless network, compatible wireless network availability, navigation map data, and GPS satellite signal reception, the absence of which can limit or prevent the ability to reach NissanConnect<sup>SM</sup> Customer Care or receive support. Never program while driving. GPS mapping may not be detailed in all areas or reflect current road status. You are responsible for using Remote Horn features in accordance with any laws, rules or ordinances in effect in your vehicle's location. Cellular network not available in all areas and/or at all times. Cellular technology is evolving, and changes to cellular networks provided by independent companies are not within Nissan's or SXM CVS Canada's control. Neither Nissan nor SXM CVS Canada are responsible for associated costs that may be required for continued operation due to cellular network termination (including equipment upgrades, if available, or roaming charges on alternative networks). Should cellular provider terminate/restrict service, service may be terminated without notice and with no liability to Nissan, SXM CVS Canada and/or their respective agents or affiliates. Certain services require a PIN for activation. Enrollment and Subscription Agreement is required to receive full suite of NissanConnect<sup>SM</sup> Services powered by SiriusXM<sup>®</sup> six (6) month trial period. Trial periods begin on your date of vehicle purchase or lease of a new Nissan; subsequently the respective paid subscription is at the then current rate to continue to receive respective services. Text rates and/or data usage may apply. See [Nissan.ca/NissanConnect](http://Nissan.ca/NissanConnect) for details. <sup>17</sup>Never program while driving. GPS mapping may not be detailed in all areas or reflect current road status. <sup>18</sup>Intelligent Around View<sup>®</sup> Monitor cannot completely eliminate blind spots and may not detect every object. It operates at vehicle speeds below 8 km/h. Always check surroundings and turn to look behind you before moving vehicle. <sup>19</sup>Intelligent Cruise Control is not a collision avoidance system or warning device. Designed to use limited braking. Failure to apply the brakes could result in an accident. <sup>20</sup>Automatic Emergency Braking with Pedestrian Detection is not a replacement for responsible driving. May not provide warning or braking in certain conditions. Speed and other limitations apply. See Owner's Manual for details. <sup>21</sup>Blind Spot Warning is not a substitute for proper lane change procedures. The system will not prevent contact with other vehicles or accidents. It may not detect every vehicle or object around you. <sup>22</sup>Intelligent Lane Intervention and Lane Departure Warning operate only when the lane markings are clearly visible. Speed limitations apply. See Owner's Manual for details. <sup>23</sup>Rear Cross Traffic Alert is not a substitute for proper backing procedures. May not detect all moving vehicles. Speed and other limitations apply. See Owner's Manual for details.

## SPECIFICATIONS

Engine	S	SV	SL
MR20DD – 2.0-litre DOHC 16-valve 4-cylinder	<span>■</span>	<span>■</span>	<span>■</span>
– Horsepower – 141 HP @ 6000 rpm			
– Torque – 147 lb.-ft. @ 4400 rpm			
Continuously Variable Valve Timing Control System (CVTCS) on intake and exhaust valves	<span>■</span>	<span>■</span>	<span>■</span>
Nissan Direct Ignition System with platinum-tipped spark plugs	<span>■</span>	<span>■</span>	<span>■</span>
Eco Mode	<span>■</span>	<span>■</span>	<span>■</span>

Drivetrain			
Front-Wheel Drive (FWD)	<span>■</span>	<span>■</span>	
Intelligent All-Wheel Drive (AWD) <sup>1</sup>	<span>□</span>	<span>□</span>	<span>■</span>
Hill start assist	<span>■</span>	<span>■</span>	<span>■</span>
6-speed manual transmission	<span>■</span>		
Xtronic CVT® (Continuously Variable Transmission) with manual shift mode	<span>□</span>	<span>■</span>	<span>■</span>

Brakes			
4-wheel vented disc brakes	<span>■</span>	<span>■</span>	<span>■</span>
4-wheel Anti-lock Braking System (ABS)	<span>■</span>	<span>■</span>	<span>■</span>
Electronic Brake force Distribution (EBD)	<span>■</span>	<span>■</span>	<span>■</span>
Brake Assist	<span>■</span>	<span>■</span>	<span>■</span>
Intelligent Trace Control	<span>■</span>	<span>■</span>	<span>■</span>
Intelligent Engine Brake	<span>■</span> <sup>1</sup>	<span>■</span>	<span>■</span>
Active Ride Control	<span>■</span>	<span>■</span>	<span>■</span>
Electronic Parking Brake	<span>■</span> <sup>2</sup>		

Suspension/Chassis Bracing/Steering			
Independent strut front suspension	<span>■</span>	<span>■</span>	<span>■</span>
Independent multi-link rear suspension	<span>■</span>	<span>■</span>	<span>■</span>
Front and rear stabilizer bars	<span>■</span>	<span>■</span>	<span>■</span>
Electronic power steering with Sport Mode	<span>■</span>	<span>■</span>	<span>■</span>

Wheels/Tires			
16" x 6.5" steel wheels with wheel covers	<span>■</span> <sup>2</sup>		
17" x 7.0" aluminum-alloy wheels	<span>■</span> <sup>1</sup>	<span>■</span>	
19" x 7.0" aluminum-alloy wheels			<span>■</span>
P215/65R16 all-season tires	<span>■</span> <sup>2</sup>		
P215/60R17 all-season tires	<span>■</span> <sup>1</sup>	<span>■</span>	
P225/45R19 all-season tires			<span>■</span>

Exterior Features			
LED Daytime Running Lights with LED signature	<span>■</span>	<span>■</span>	<span>■</span>
Halogen headlights	<span>■</span>	<span>■</span>	<span>■</span>
LED headlights		<span>■</span>	<span>■</span>
Automatic on/off headlights		<span>■</span>	<span>■</span>
Fog lights		<span>■</span>	<span>■</span>
Power heated outside mirrors with LED turn signal indicators	<span>■</span>	<span>■</span>	<span>■</span>
Roof rails		<span>■</span>	<span>■</span>
Rear spoiler	<span>■</span>	<span>■</span>	<span>■</span>
Black wheel arch mouldings and rocker panels	<span>■</span>	<span>■</span>	<span>■</span>
Power Sliding Moonroof with one-touch open/close and tilt feature		<span>■</span>	<span>■</span>

Comfort/Convenience	S	SV	SL
Advanced Drive-Assist® Display <sup>3,4</sup>	<span>■</span>	<span>■</span>	<span>■</span>
NissanConnect <sup>SM</sup> with Navigation and Mobile Apps <sup>5,6</sup>			<span>■</span>
NissanConnect <sup>SM</sup> with Navigation, Mobile Apps, and Services <sup>5,6</sup>			<span>P</span>
127 mm (5.0") colour display	<span>■</span>	<span>■</span>	
178 mm (7.0") colour touch-screen display and Voice Recognition for navigation and audio <sup>6</sup>			<span>■</span>
SiriusXM® Traffic and Travel Link <sup>7</sup>			<span>■</span>

Siri® Eyes Free <sup>8</sup>	<span>■</span>	<span>■</span>	<span>■</span>
Hands-free text messaging assistant <sup>9</sup>	<span>■</span>	<span>■</span>	<span>■</span>
Bluetooth® Hands Free Phone System <sup>10</sup>	<span>■</span>	<span>■</span>	<span>■</span>
RearView Monitor <sup>11</sup>	<span>■</span>	<span>■</span>	<span>■</span>
Intelligent Around View® Monitor <sup>11</sup>		<span>■</span>	<span>■</span>
Dual Zone Automatic Temperature Control (ATC)		<span>■</span>	<span>■</span>
Rear seat heating/cooling vents	<span>■</span> <sup>1</sup>	<span>■</span>	<span>■</span>
Power windows with driver's one-touch auto-up/down feature	<span>■</span>	<span>■</span>	<span>■</span>
Power door locks with auto-locking feature	<span>■</span>	<span>■</span>	<span>■</span>

Integrated Key with remote keyless entry	<span>■</span>		
Nissan Intelligent Key® with Push Button Ignition		<span>■</span>	<span>■</span>
Remote Engine Start System with Intelligent Climate Control <sup>12</sup>		<span>■</span>	<span>■</span>
High Beam Assist			<span>P</span>
Tilt and telescoping steering column	<span>■</span>	<span>■</span>	<span>■</span>
Illuminated steering wheel-mounted controls	<span>■</span>	<span>■</span>	<span>■</span>
Cruise control	<span>■</span> <sup>1</sup>	<span>■</span>	<span>■</span>
Intelligent Cruise Control (ICC) <sup>13</sup>			<span>P</span>
Variable intermittent windshield wipers	<span>■</span>	<span>■</span>	<span>■</span>

Intermittent rear window wiper	<span>■</span>	<span>■</span>	<span>■</span>
12-volt DC power outlet	<span>■</span>	<span>■</span>	<span>■</span>
Sun visors with vanity mirrors and extensions	<span>■</span>	<span>■</span>	<span>■</span>
Dual illuminated visor vanity mirrors		<span>■</span>	<span>■</span>
Overhead map lights	<span>■</span>	<span>■</span>	<span>■</span>
Overhead sunglasses storage	<span>■</span>	<span>■</span>	<span>■</span>
Front centre console	<span>■</span>	<span>■</span>	<span>■</span>
Rear-seat centre armrest		<span>■</span>	<span>■</span>
Front seatback pockets			<span>■</span>
Four cup holders and four bottle holders		<span>■</span>	<span>■</span>
Cargo tie-down hooks (six) <sup>14</sup>	<span>■</span>	<span>■</span>	<span>■</span>
Divide-N-Hide® Cargo System <sup>14</sup>		<span>■</span>	<span>■</span>
Cargo cover	<span>■</span>	<span>■</span>	<span>■</span>

Seating/Appointments	S	SV	SL
6-way manual driver's seat	<span>■</span>	<span>■</span>	<span>■</span>
6-way power driver's seat with 2-way power lumbar			<span>■</span>
4-way manual front-passenger's seat	<span>■</span>	<span>■</span>	<span>■</span>
60/40 2nd-row split folding seat	<span>■</span>	<span>■</span>	<span>■</span>
Cloth seat trim	<span>■</span>	<span>■</span>	<span>■</span>
Leather-appointed seats			<span>■</span>
Quick Comfort® heated front seats	<span>■</span>	<span>■</span>	<span>■</span>
Heated leather-wrapped steering wheel		<span>■</span>	<span>■</span>
Leather-wrapped shift knob		<span>■</span>	<span>■</span>

<span>■</span> Standard	<span>P</span> Part of SL
<span>□</span> Optional	<span>■</span> Platinum Package

Audio/Entertainment	S	SV	SL
AM/FM/CD audio system with 127 mm (5.0") colour display	<span>■</span>	<span>■</span>	
AM/FM/CD audio system with 178 mm (7.0") colour touch-screen display			<span>■</span>
Four speakers	<span>■</span>		
Six speakers		<span>■</span>	<span>■</span>
MP3/WMA CD playback capability	<span>■</span>	<span>■</span>	<span>■</span>
Auxiliary audio input jack <sup>15</sup>	<span>■</span>	<span>■</span>	<span>■</span>
USB connection port for iPod® interface and other compatible devices <sup>15</sup>	<span>■</span>	<span>■</span>	<span>■</span>
Streaming audio via Bluetooth® wireless technology <sup>10</sup>	<span>■</span>	<span>■</span>	<span>■</span>
SiriusXM® Satellite Radio <sup>7</sup>		<span>■</span>	<span>■</span>
Radio Data System (RDS)	<span>■</span>	<span>■</span>	<span>■</span>
Speed-sensitive volume control	<span>■</span>	<span>■</span>	<span>■</span>
Illuminated steering wheel-mounted audio controls	<span>■</span>	<span>■</span>	<span>■</span>

Safety/Security			
Nissan Advanced Airbag System with dual-stage supplemental front airbags with occupant-classification sensors <sup>16</sup>	<span>■</span>	<span>■</span>	<span>■</span>
Driver and front-passenger seat-mounted side-impact supplemental airbags <sup>16</sup>	<span>■</span>	<span>■</span>	<span>■</span>
Roof-mounted curtain supplemental airbags with rollover sensor for side-impact head protection for front and rear-seat outboard occupants <sup>16</sup>	<span>■</span>	<span>■</span>	<span>■</span>
Vehicle Dynamic Control (VDC) <sup>17</sup> with Traction Control System (TCS)	<span>■</span>	<span>■</span>	<span>■</span>
Automatic Emergency Braking with Pedestrian Detection <sup>18</sup>			<span>P</span>
Blind Spot Warning (BSW) <sup>19</sup>			<span>P</span>
Rear Cross Traffic Alert (RCTA) <sup>20</sup>			<span>P</span>
Lane Departure Warning (LDW) and Intelligent Lane Intervention <sup>21</sup>			<span>P</span>
3-point ELR driver and passenger seat belt system	<span>■</span>	<span>■</span>	<span>■</span>
LATCH System (Lower Anchors and Tethers for CHildren)		<span>■</span>	<span>■</span>
Tire Pressure Monitoring System (TPMS) with Easy-Fill Tire Alert <sup>22,23</sup>	<span>■</span>	<span>■</span>	<span>■</span>


### PACKAGE

**SL Platinum Package**

- LED Headlights** • **High Beam Assist** • **NissanConnect with Navigation, Mobile Apps, and Services<sup>5,6</sup>** • **Intelligent Cruise Control (ICC)<sup>13</sup>** • **Automatic Emergency Braking with Pedestrian Detection<sup>18</sup>** • **Blind Spot Warning (BSW)<sup>19</sup>**
- Lane Departure Warning (LDW) and Intelligent Lane Intervention<sup>21</sup>**
- Rear Cross Traffic Alert (RCTA)<sup>20</sup>**


<sup>1</sup>Xtronic CVT models only. <sup>2</sup>Manual transmission only. <sup>3</sup>Driving is serious business and requires your full attention. If you have to use the feature while driving, exercise extreme caution at all times so full attention may be given to vehicle operation. <sup>4</sup>Information displayed is dependent on how vehicle is equipped. <sup>5</sup>Driving is serious business. Only use NissanConnect<sup>SM</sup> Services powered by SiriusXM<sup>®</sup> and NissanConnect<sup>SM</sup> Mobile Apps when safe to do so. NissanConnect<sup>SM</sup> Services and Mobile Apps availability is dependent on vehicle model, trim level, packaging, and/or options. See **Nissan.ca/NissanConnect** for complete availability details. Late availability for some features. Compatible smartphone required to operate NissanConnect<sup>SM</sup> Mobile Apps. NissanConnect<sup>SM</sup> Services, including automatic crash notification and SOS, are dependent upon the telematics device being in operative condition, its ability to connect to a wireless network, compatible wireless network availability, navigation map data, and GPS satellite signal receptions, the absence of which can limit or prevent the ability to reach NissanConnect<sup>SM</sup> Customer Care or receive support. Never program while driving. GPS mapping may not be detailed in all areas or reflect current road status. You are responsible for using Remote Horn features in accordance with any laws, rules or ordinances in effect in your vehicle's location. Cellular network not available in all areas and/or at all times. Cellular technology is evolving, and changes to cellular networks provided by independent companies are not within Nissan's or SXM CVS Canada's control. Neither Nissan nor SXM CVS Canada are responsible for associated costs that may be required for continued operation due to cellular network termination (including equipment upgrades, if available, or roaming charges on alternative networks). Should cellular provider terminate/restrict service,

## CAPACITIES/FUEL

Capacities		
Seating capacity		<b>5</b>
Interior passenger volume without moonroof – L (cu. ft.)		<b>2718 (96.0)</b>
Interior passenger volume with moonroof – L (cu. ft.)		<b>2670 (94.3)</b>
Cargo capacity with 2nd row upright – S/SV/SL – L (cu. ft.)		<b>648/564/564 (22.9/19.9/19.9)</b> <b>566 (20.0)</b> with moonroof
Cargo capacity with rear seats folded down – S/SV/SL – L (cu. ft.)		<b>1730/1509/1509 (61.1/53.3/53.3)</b> <b>1501 (53.0)</b> with moonroof
Fuel tank – L (Imp. gal.)		<b>55 (12.1)</b>

2017 Fuel Consumption Estimates – L/100 km (MPG)		
<b>City/Highway</b>		
FWD (M/T)	<b>10.0 (28)/8.1 (35)</b>	
FWD (CVT)	<b>8.8 (32)/7.3 (39)</b>	
AWD (CVT)	<b>9.1 (31)/7.5 (38)</b>	
<sup>1</sup> –Actual mileage may vary with driving conditions – use for comparison only.		

service may be terminated without notice and with no liability to Nissan, SXM CVS Canada and/ or their respective agents or affiliates. Certain services require a PIN for activation. Enrollment and Subscription Agreement is required to receive full suite of NissanConnect<sup>SM</sup> Services powered by SiriusXM<sup>®</sup> six (6) month trial period. Trial periods begin on your date of vehicle purchase or lease of a new Nissan; subsequently the respective paid subscription is at the then current rate to continue to receive respective services. Text rates and/or data usage may apply. See **Nissan.ca/NissanConnect** for details. <sup>6</sup>Never program while driving. GPS mapping may not be detailed in all areas or reflect current road status. <sup>7</sup>XM<sup>®</sup> and SiriusXM<sup>®</sup> Satellite Radio is available in the 10 Canadian provinces and the 48 contiguous United States. Basic monthly subscription required and sold separately after 90-day trial period. NavTraffic<sup>®</sup>/SiriusXM<sup>®</sup> Traffic is available in select North American markets. In Canada, at time of printing, incident and flow data is available for 12 metropolitan areas of Canada (Vancouver, Calgary, Edmonton, Toronto, Ottawa, Montreal, Quebec City, Hamilton, St. Catharines, Kitchener, Guelph, and London). Subscription sold separately after trial period. All subscriptions subject to customer agreement at **siriusxm.ca/terms**. Fees and programming subject to change. ©2017 Sirius XM Canada Inc. The Sirius<sup>®</sup>, XM<sup>®</sup>, and SiriusXM<sup>®</sup> names and all related marks and logos are trademarks of Sirius XM Radio Inc. All other trademarks are the property of their respective owners. <sup>8</sup>Driving is serious business and requires your full attention. Only use feature when safe to do so. Compatible smartphone required. Availability of specific feature is dependent upon the phone's Bluetooth<sup>®</sup> support. Please refer to your phone Owner's Manual for details. Bluetooth<sup>®</sup> word mark and logos are owned by Bluetooth SIG, Inc. and any use of such marks by Nissan is under licence. See **Nissan.ca** for details. Text rates and/or data usage may apply. Certain services, including Siri<sup>®</sup>, are provided by independent companies not within Nissan's control. Should service provider terminate/restrict service, service may be suspended or terminated without notice or liability to Nissan and/or its agents. Nissan not responsible for any equipment replacement or upgrades, or associated costs, that may be required for continued operation due to service changes. Siri<sup>®</sup> and Siri<sup>®</sup> Eyes Free are registered trademarks of Apple, Inc. <sup>9</sup>Use the text messaging feature after stopping your vehicle in a safe location. If you have to use the feature while driving, exercise extreme caution at all times so full attention may be given to vehicle operation. Compatible smartphone required. Text rates and/or data usage may apply. <sup>10</sup>Availability of specific features is dependent upon the phone's Bluetooth<sup>®</sup> support. Please refer to your phone Owner's Manual for details. Bluetooth<sup>®</sup> word mark and logos are owned by Bluetooth SIG, Inc., and any use of such marks by Nissan is under licence. <sup>11</sup>Parking aid/convenience feature. Cannot completely eliminate blind spots. May not detect every object and does not warn of moving objects. Always check surroundings and turn to look behind you before moving vehicle. <sup>12</sup>Provincial laws may apply; review local laws before using. <sup>13</sup>Intelligent Cruise Control is not a collision avoidance system or warning device. Designed to use limited braking. Failure to apply the brakes could result in an accident. <sup>14</sup>Cargo and load capacity limited by weight and distribution. Always secure all cargo. Heavy loading of the vehicle with cargo, especially on the roof, will affect the handling and stability of the vehicle. <sup>15</sup>Driving is serious business and requires your full attention. If you have to use the connected device while driving, exercise extreme caution at all times so full attention may be given to vehicle operation. iPod<sup>®</sup> is a registered trademark of Apple, Inc. All rights reserved. iPod<sup>®</sup> or other external device not included. <sup>16</sup>Airbags are only a supplemental restraint system; always wear your seat belt. Even with the occupant-classification sensor, rear-facing child restraints should not be placed in the front-passenger's seat. Also, in addition to any other requirement of applicable law, all children 12 and under should ride in the rear seat properly secured in child restraints, booster seats, or seat belts according to their size. Airbags will only inflate in certain accidents; see your Owner's Manual for more details. <sup>17</sup>VDC, which should remain on when driving except when freeing the vehicle from mud or snow, cannot prevent accidents due to abrupt steering, carelessness, or dangerous driving techniques. <sup>18</sup>Automatic Emergency Braking with Pedestrian Detection is not a replacement for responsible driving. May not provide warning or braking in certain conditions. Speed and other limitations apply. See Owner's Manual for details. <sup>19</sup>Blind Spot Warning is not a substitute for proper lane change procedures. The system will not prevent contact with other vehicles or accidents. It may not detect every vehicle or object around you. <sup>20</sup>RCTA is not a substitute for proper backing procedures. May not detect all moving vehicles. Speed and other limitations apply. See Owner's Manual for details. <sup>21</sup>Intelligent Lane Intervention and Lane Departure Warning operate only when the lane markings are clearly visible. Speed limitations apply. See Owner's Manual for details. <sup>22</sup>TPMS is not a substitute for regular tire pressure checks. <sup>23</sup>Vehicle must be on for the Easy-Fill Tire Alert to operate.



## NISSAN INTELLIGENT MOBILITY

Nissan Intelligent Mobility guides everything we do. We're using new technologies to transform cars from mere driving machines into partners. Together the journey is more confident, connected, and exciting. Whether it's cars that share the task of driving with you, or highways that charge your EV as you go along, it's all in the very near future. And it's a future already taking shape in the Nissan you drive today.

### NISSAN QASHQAI®

Isn't it time you were passionate about the car you drive? Welcome to the 2017 Qashqai.

Follow Nissan Canada on:



Innovation  
that excites

#### visit [nissan.ca](http://nissan.ca)

Facebook® is a registered trademark of Facebook, Inc. Twitter® is a registered trademark of Twitter, Inc. YouTube® is a registered trademark of Google Inc. Instagram® is a registered trademark of Instagram, LLC.

All illustrations, photographs and specifications in this brochure are based on the latest product information. See actual vehicle for complete accuracy. Nissan Canada Inc. reserves the right to make changes at any time, without notice, in prices, colours, materials, equipment, specifications and models, and to discontinue models or equipment. For information on additional options and accessories, contact your Nissan Dealership. Registered trademarks are property of their respective owners.

At [nissan.ca](http://nissan.ca), you'll find a way to "build your own Nissan," a dealer locator, and more information about key Nissan support services. The Nissan names, logos, product names, feature names, and slogans are trademarks owned by or licenced to Nissan Motor Co. Ltd. and/or its North American subsidiaries. **Always wear your seat belt, and please don't drink and drive.** Printed in May 2017. Catalogue number: 99999-QAS17EN. ©2017 Nissan Canada Inc. All rights reserved.