

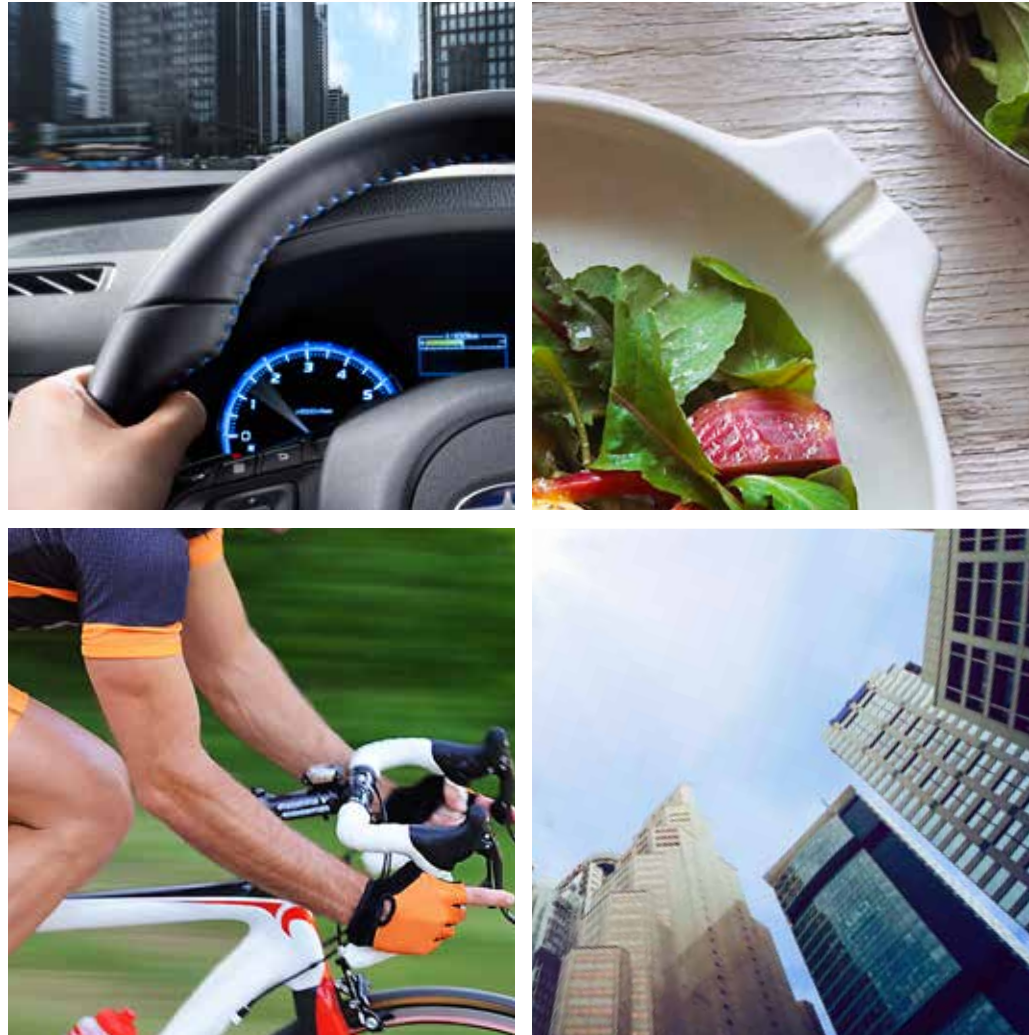
# LEVORG



**SUBARU**

*Confidence in Motion*





**Made by perfectionists,  
for multitaskers.**



That moment when you've reached excellence in life—it feels great. And it feels even better when you're achieving highly in multiple areas. Some call it perfectionism; others consider it living life to the fullest. For those who continually strive to be better at everything, the Levorg was created.



**Performance that transcends.  
Design that rises above.**





# Innovation made stylish.

There's a place where design and technology intersect, where form and function stand on equal ground. The Levorg exists in this sweet spot, blending useful functionality with eye-pleasing aesthetics wherever you look.



## Design

The Levorg makes its intentions clear with the hexagonal grille and muscular front end design with a fully functional hood-scoop that keeps the turbocharged SUBARU BOXER engine's intercooler constantly refreshed with cool air.



## Illumination

The "Hawkeye" headlamps evoke images of the raptor, or bird of prey. Powered by LEDs, the headlamps have enough brightness to back up their aggressive style, providing all the illumination you'll need.





# 1.6-LITRE DIT ENGINE

**125**

/ 4,800-5,600

MAX OUTPUT  
(kW / rpm)

**250**

/ 1,800-4,800

MAX TORQUE  
(Nm / rpm)



## 1.6-litre Direct Injection Turbo Engine

The newest member of the SUBARU BOXER engine family, the 1.6-litre DIT engine achieves an ideal balance between efficiency, powerful performance, and low emissions. Utilising both direct fuel injection and a twin-scroll turbocharger results in more power and decreased petrol consumption, despite having a smaller displacement vs. previous generations.

## 1 Paddle Shifters

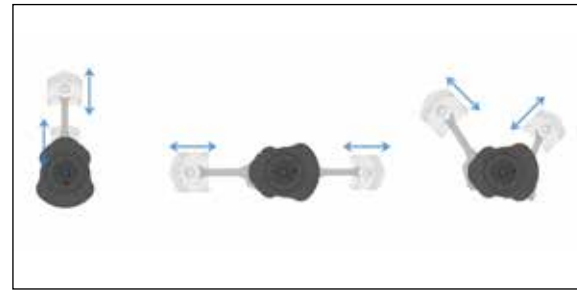
For a more engaging experience, drivers can switch to manual mode and use the paddle shifters to experience the kind of responsive six-speed manual shifting you wouldn't expect from a Continuously Variable Transmission, allowing drivers to enjoy the delight of sports driving.

## 2 SI-DRIVE

SUBARU Intelligent Drive (SI-DRIVE) allows a selection of engine and transmission characteristics according to the driver's driving style, driving expectations, and driving situations. It offers two distinctive functions: Intelligent and Sport. Intelligent mode provides smoother acceleration and more efficient operation, whilst Sport mode offers a more exciting driving experience, with enhanced power and acceleration.

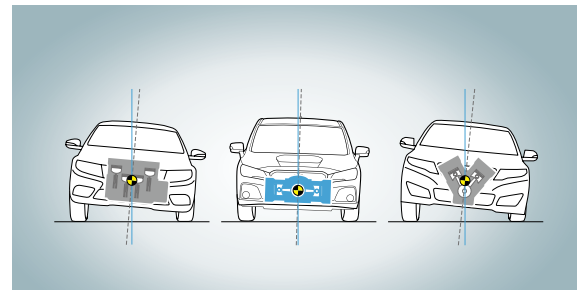
# SUBARU BOXER ENGINE: Balanced and Composed.

The horizontally opposed configuration of the SUBARU BOXER engine places the pistons 180 degrees apart, for a lower, flatter profile than that of other engine types. This gives the engine, and overall vehicle, a lower centre of gravity, a lower profile, and a more balanced distribution of weight.



## Naturally Balanced

Unlike traditional "inline" or "v" engine configurations, the pistons' opposing movements inherently counteract each other, naturally helping to reduce vibration without the need for counter-balancers, which add weight and complexity.

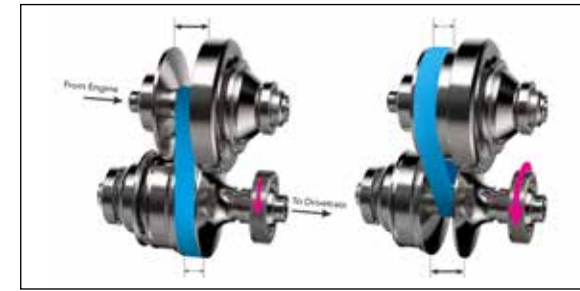


## Low Centre of Gravity

All of the heavy moving components inside a horizontally opposed engine—the connecting rods, pistons, camshafts and valve train—are positioned on a horizontal plane, as low as possible. This gives SUBARU vehicles a distinctly lower centre of gravity versus vehicles with "inline" and "v" configured engines, resulting in numerous handling and performance benefits.

# LINEARTRONIC CVT: Shift your expectations.

A passenger car with All-Wheel Drive—it was a totally new concept when SUBARU introduced it to the world. Afterward, public perception of AWD technology changed forever. The trend continues with the latest Lineartronic CVT found in the Levorg. Responsive and lightweight, this transmission rejects the status quo with unexpected precision and liveliness.



## Always adapting, always performing.

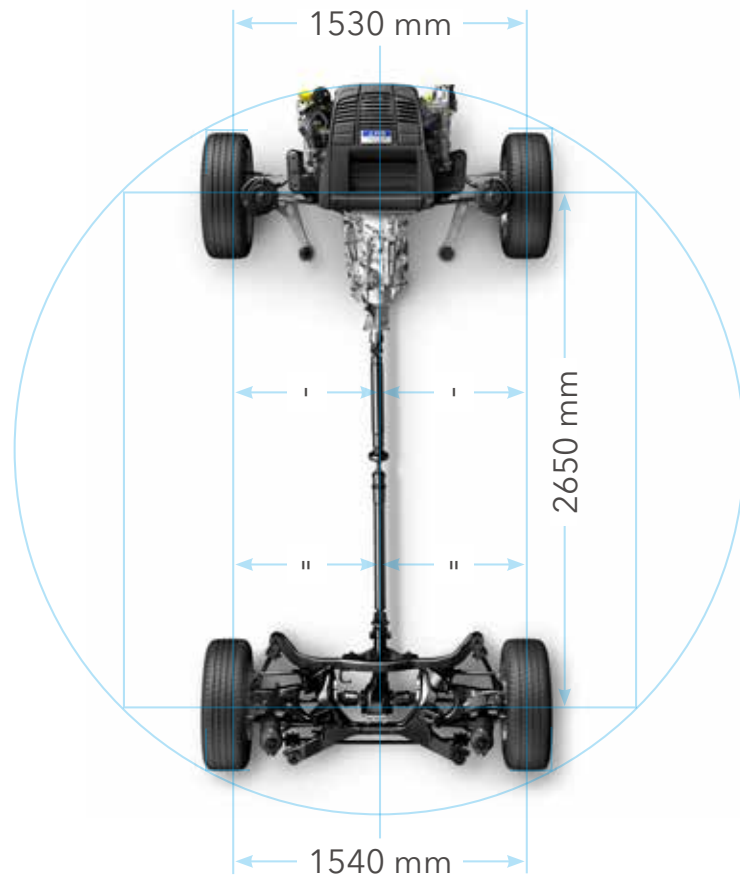
Unburdened by having fixed gear ratios like a conventional automatic transmission, the Lineartronic Continuously Variable Transmission of the Levorg uses infinitely variable gear ratios to stay in the correct rev-range at all times, for smooth acceleration and enhanced efficiency.



## Decreased size, increased efficiency.

To increase efficiency and decrease the size of the Lineartronic transmission of the Levorg, Subaru reengineered it from the inside out. Key components like the chain belt and pulleys were revised to allow for a more compact size and efficient operation.





## Symmetrical All-Wheel Drive: Four points of contact.

### Traction in all conditions.

There's a reason Symmetrical All-Wheel Drive system is respected around the world. When road conditions are demanding, it delivers control and composure where other vehicles stumble by evenly distributing power to all four wheels. The benefits are immediately apparent—more controlled cornering, better traction in slippery conditions, and enhanced acceleration. The overall sensation is that driving becomes an easier, safer and more enjoyable affair.

### 1 Suspension—tuned for your world.

The four-wheel independent suspension of the Levorg was designed to filter out vibrations and impacts for safer, for confident driving, whilst letting the driver “feel” the road for a more invigorating driving experience.

### 2 Vehicle Dynamics Control System with Active Torque Vectoring

Vehicle Dynamics Control System uses an array of sensors to monitor and analyse the vehicle's motion in relation to driver input and driving conditions. To help the driver maintain control, Vehicle Dynamics Control System adjusts AWD torque distribution, engine output, and braking force to each wheel, resulting in a more predictable and safe driving experience. Active Torque Vectoring will strategically apply braking forces, shifting torque to the outside wheels during a turn, resulting in increased steering responsiveness and more control.





# Your world. Your Space.

Think of it as less of an “interior” and more of “your personal space.” No different than an office, home, or any other space where you’ll spend a lot of your time, the Levorg interior keeps you blissfully content with materials that are soft to the touch and supportive, with quality that allows it to endure the test of time. It’s a place of taste and class—a reflection of your own sensibilities.



### Seating Design

The engaging driving experience of the Levorg is accentuated by front seats that support drivers and passengers in all the right places, helping maintain a balance of both comfort and control for a safer, more enjoyable driving experience.



### D-shaped Steering Wheel

There’s a reason so much thought went into it—the steering wheel is your main connection to the driving experience. Beyond the sporty, D-shaped design, the steering wheel of the Levorg is easily gripped and manipulated, thanks to its sculpted shape and grip-worthy feel.





## Always stay in touch.

Technology should only add simplicity to your life, not the other way around. The Levorg simplifies the driving experience by integrating your life into the vehicle seamlessly, so you can stay entertained, informed and connected, without losing site of the most important thing—getting there and back safe and sound.

### 1 SUBARU STARLINK\*1

Like a built-in smartphone for your car, having the SUBARU STARLINK\*1 infotainment system lets you access internet radio, entertaining apps, and much more. Control it with the tablet-like 7-inch centre touchscreen, multifunction steering wheel controls, or one-shot voice recognition\*2. If you can't find your favourite music, connect your iPhone\*3, smartphone or other mobile music device via the USB or standard AUX jack.



### 2 Multifunction Display

Positioned to be clearly visible with minimal distraction as you drive, this display shows you a variety of information that puts you in touch with your vehicle.

### 4 Voice Recognition\*2

Intuitive Voice Recognition\*2 can understand phrases and dialogues to enter and interact with navigation, hands-free telephone and audio systems for added ease in every drive.

### 3 Touchscreen Control

Using the touchscreen is an easy way to select your music, just as you would on your smartphone. Simply connect your smartphone through Bluetooth®\*4 or the USB port, and you can choose your music right on the touchscreen.

### 5 Steering Wheel-mounted Controls

Steering wheel-mounted controls place audio controls conveniently at your fingertips, and an available Bluetooth®\*4 hands-free system automatically links with your smartphone to help keep you focused on the road.

\*1 Driver is always responsible for safe and attentive driving. Please refrain from operating the touchscreen whilst driving. Package communications fee may be charged depending on your area.

\*2 Voice Recognition is compatible with select languages only and cannot accept all languages.

\*3 Apple, iPhone and iPod are registered trademarks of Apple Inc.

\*4 Bluetooth is a registered trademark of Bluetooth SIG, Inc. America.





## Imagine the possibilities.

The Levorg is a vehicle built for people with full lives, always living life to the fullest. That's why it's versatile enough for all the activities, passions, sports and interests that you live for, with ample cargo space and flexibility for your endeavours.



### Sub-trunk Storage Area

Beneath the main cargo area of the Levorg, you can use the sub-trunk to store delicate items for safe transport inside the portioned space, with a total of 40 litres of volume\*<sup>1</sup>.



### 60/40 Folding Rear Seats

For bulkier or odd-shaped items such as golf bags or skis, the 60/40 folding rear seats can adapt accordingly.

### Wider Opening for Easier Access

It's easy to move items in and out of the voluminous cargo area of the Levorg, thanks to its rear door. When fully extended, users have wide open access to the Levorg's 522 litres of storage space\*<sup>2</sup>.

\*1 Measured by VDA.  
\*2 Measured by VDA (V211).





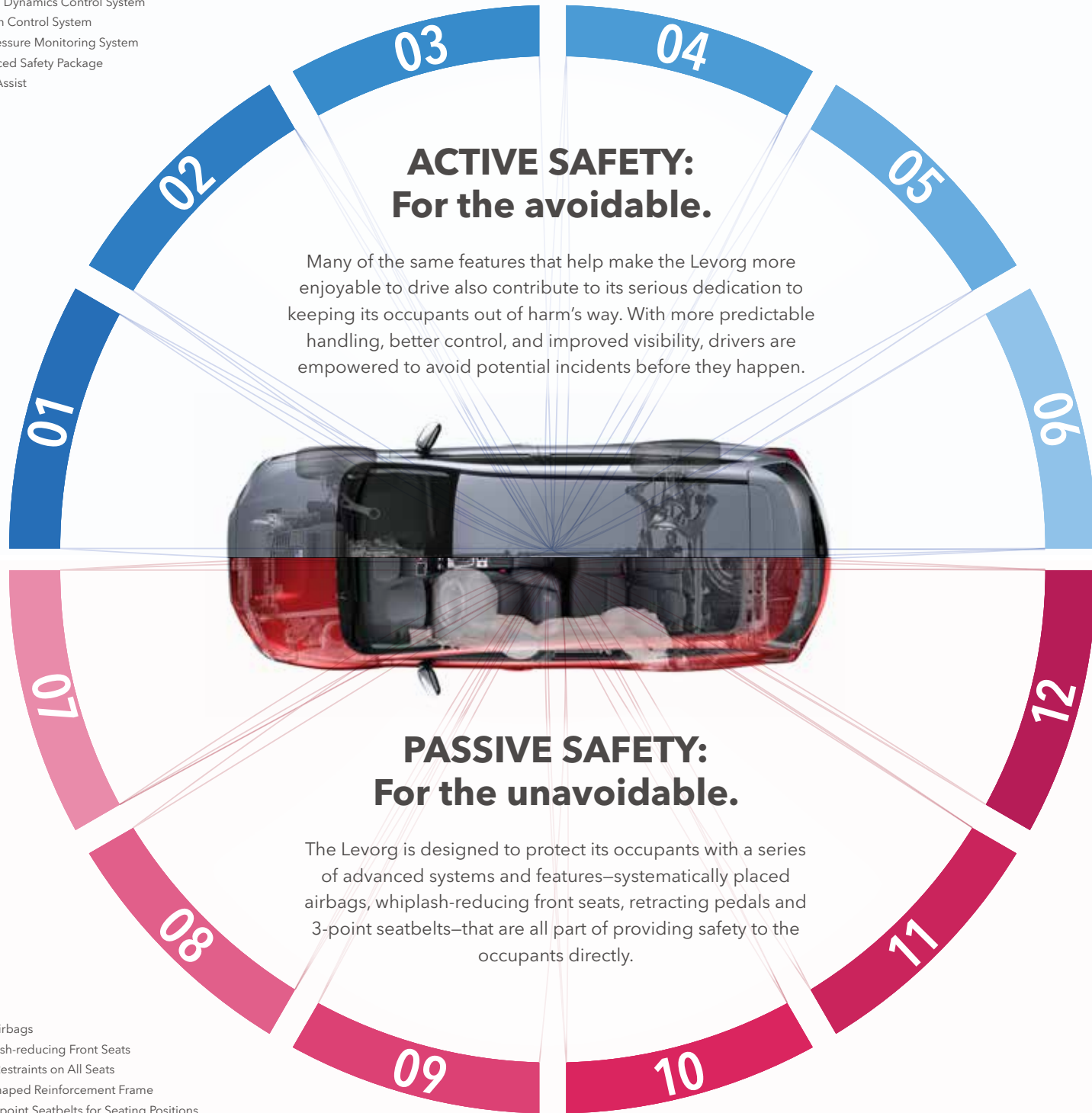


## Keenly aware. Thoroughly safeguarded.

Safety matters. It matters to Subaru. It matters to the people who created the Levorg. Most of all, it matters to you. That's why the Levorg was built to achieve excellence in every aspect of safety. From protecting occupants in case of an incident, to helping you avoid one in the first place, the Levorg is blessed with the technology and engineering to keep give you peace of mind and safety wherever the road takes you.



- 01: Symmetrical AWD
- 02: Vehicle Dynamics Control System
- 03: Traction Control System
- 04: Tire Pressure Monitoring System
- 05: Advanced Safety Package
- 06: Brake Assist



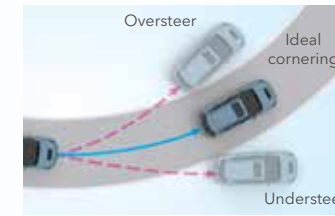
## ACTIVE SAFETY: For the avoidable.

Many of the same features that help make the Levorg more enjoyable to drive also contribute to its serious dedication to keeping its occupants out of harm's way. With more predictable handling, better control, and improved visibility, drivers are empowered to avoid potential incidents before they happen.

## PASSIVE SAFETY: For the unavoidable.

The Levorg is designed to protect its occupants with a series of advanced systems and features—systematically placed airbags, whiplash-reducing front seats, retracting pedals and 3-point seatbelts—that are all part of providing safety to the occupants directly.

- 07: SRS\* Airbags
- 08: Whiplash-reducing Front Seats
- 09: Head Restraints on All Seats
- 10: Ring-shaped Reinforcement Frame
- 11: Rear 3-point Seatbelts for Seating Positions
- 12: Cabin-protecting Layout



**Vehicle Dynamics Control System:** The Vehicle Dynamics Control System monitors and analyses via an array of sensors whether the vehicle is following the driver's intended path. If the vehicle approaches the limits of stability, the AWD torque distribution, engine output and brakes at each wheel are adjusted to assist in keeping the vehicle on course.



**Advanced Safety Package:** For increased awareness and visibility, the Advanced Safety Package includes two innovative new features—High Beam Assist (HBA) and Subaru Rear Vehicle Detection (SRVD). HBA can automatically toggle between high and low beams depending on road conditions such as speed and oncoming traffic, enhancing visibility for you, and other drivers as well. SRVD uses sensors placed around the vehicle to alert you of vehicles in your rear blind spots for safer lane changes, and can also warn drivers of potential collision danger, whilst driving in reverse into a street with cross traffic.



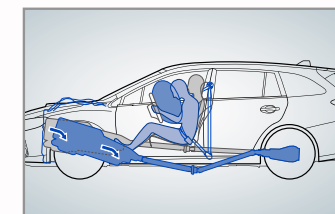
**Brakes:** The 4-wheel disc brakes feature lightweight aluminum rear calipers for strong, progressive braking feel. The Antilock Braking System includes Electronic Brake-force Distribution, to reapportion front/rear braking pressure when the vehicle is loaded. For more predictable and controlled braking during an emergency, the Levorg features both Brake Assist and Brake Override.



**SRS\* Airbags:** In case of a collision, occupants are protected with an arsenal of standard safety equipment, including front SRS\* airbags, plus front-side, curtain SRS\* airbags and knee SRS\* airbags. To hold passengers firmly in place, the front seatbelts feature height-adjustable pretensioners, and also load limiters that ease peak forces to the chest. In a rear collision, front seats utilise rigid frames, firm headrests and such details as energy-absorbing mounting of the inner seat springs, all to help reduce the chance of whiplash.



**Ring-shaped Reinforcement Frame:** The Ring-shaped Reinforcement Frame is like a suit of armor for all occupants of the Levorg. It's a shroud of safety built into the passenger cabin's roof, doors, pillars and floor. This design helps divert and dissipate impact energy away from the occupants in a collision by use of high-strength materials and strategic placements. Whilst making it stronger with increased torsional rigidity, the overall frame is still lightweight.



**Cabin-protecting Layout:** Subaru has a tradition of going above and beyond when it comes to your safety, and the Levorg is no different. Achieving Excellence in safety requires outside-the-box thinking and that's why the Levorg's frame and chassis were designed to help the SUBARU BOXER engine and gearbox move safely beneath the vehicle during a head-on collision, rather than intruding into the cabin. It's yet another feature that gives you peace of mind whilst driving Levorg.

\* SRS: Supplemental Restraint System. Effective when used in conjunction with seatbelts.



# LEVORG 1.6GT-S



Steel Blue Grey Metallic

DIMENSIONS..... L x W x H: 4,690 x 1,780 x 1,490 mm  
 ENGINE..... Horizontally-opposed, 4-cylinder, turbocharged DOHC  
 CAPACITY..... 1,600 cc  
 MAX OUTPUT..... 125 kW (170 PS) / 4,800 - 5,600 rpm  
 MAX TORQUE..... 250 Nm (25.5 kgfm) / 1,800 - 4,800 rpm  
 TRANSMISSION..... Lineartronic, AWD



Crystal Black Silica



# LEVORG 1.6GT

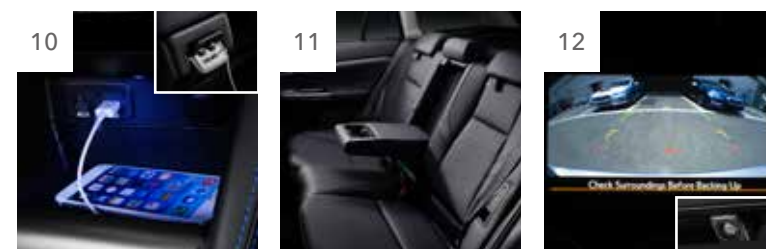


Crystal White Pearl

DIMENSIONS..... L x W x H: 4,690 x 1,780 x 1,485 mm  
 ENGINE..... Horizontally-opposed, 4-cylinder, turbocharged DOHC  
 CAPACITY..... 1,600 cc  
 MAX OUTPUT..... 125 kW (170 PS) / 4,800 - 5,600 rpm  
 MAX TORQUE..... 250 Nm (25.5 kgfm) / 1,800 - 4,800 rpm  
 TRANSMISSION..... Lineartronic, AWD



Lapis Blue Pearl



**1 Pop-up Type Headlamp Washers**  
 Pop-up washers use a high-pressure spray to help keep the available LED headlamps at their peak performance in poor weather.

**2 18-inch Aluminium Alloy Wheels\*1**  
 Available 18-inch alloy wheels give the Levorg even more style and enhanced performance by offering better grip.

**3 Power Sliding, Tilt-Adjustable Glass Sunroof\*2**  
 The large, internally sliding sunroof with manual sunshade delivers a panoramic view and fresh breezes for front and rear passengers.

**4 Twin Tail Mufflers**  
 The twin tail mufflers are either side of the blacked-out under section leave no doubt of the sporty nature of the Levorg.

**5 LED Rear Combination Lamp**  
 The Levorg maintains both style and visibility with LED rear combination lamps, which feature LED tail and stop lamps, rear fog lamps, turn lamps and reverse lamps.

**6 Keyless Access with Push-button Start System\*3**  
 With the key fob in your possession, you can unlock the front doors or tailgate by just gripping the handle and start the engine with a push of the button. Even without your key fob, 5-digit pin code can unlock the doors.

**7 High Beam Assist (HBA)\*2**  
 High Beam Assist increases visibility and safety when driving at night by toggling the Levorg's high beams on and off automatically, depending on driving conditions.

**8 Tilt-adjustable/telescopic Steering Wheel**  
 Dial in your driving experience with the tilt-adjustable and telescopic steering wheel, which can accommodate a wide range of preferences.

**9 Seat Heater\*3**  
 For extra cold days, the Levorg features adjustable heated seats for both driver and front-passenger seats.

**10 USB Power Outlet (Front and Rear)**  
 Keep all your electronic devices fully charged and ready to use with easily accessed USB power outlets for both front and rear passengers.

**11 Rear Seat Armrest with Cupholder**  
 Enjoy front-row comfort in the second row with the rear seat armrest, which folds down for extra comfort.

**12 Rear-Vision Camera System\*3**  
 The Rear-Vision Camera System enhances rear visibility when backing up, with guidelines to help you see the vehicle's path and judge distance to other objects.

\*1 Standard on 1.6GT-S.

\*2 Optional.

\*3 Standard on 1.6GT-S, Optional on 1.6GT.

# LEVORG ACCESSORIES

## Personalise your ride.

Whilst every Levorg comes generously equipped, Subaru accessories are the perfect way to tailor your Subaru to your life and your style. Whether you want to add convenience, enhance functionality, or personalise your Levorg's appearance, Subaru accessories are designed to provide the same fit and quality as your Subaru vehicle. For more details, ask for the accessory brochure or visit your nearest Subaru dealer.



STI Front Spoiler



STI Side Spoiler



STI Rear Spoiler



Tailgate Illumination



Tow Bar Detachable



Cargo Step Panel Resin



Carpet Mat Premium



Cargo Tray Low

## SUBARU DIGITAL EXPERIENCE



## SUBARU INTERACTIVE EXPERIENCE

To help you explore all things Subaru, we offer various digital materials with a wide range of exciting, interactive content such as 360-views and videos.

### eBrochure

Experience the Subaru dynamic eBrochure for more details, including videos, photos and more.

[subaru-global.com/ebrochure](http://subaru-global.com/ebrochure)



[subaru-global.com](http://subaru-global.com)

### Web Homepage

Visit our global homepage for complete information and news about Subaru and our vehicles.



[youtube.com/user/SubaruGlobalTV](https://youtube.com/user/SubaruGlobalTV)

### YouTube

Subscribe to our channel to see all the latest videos and join the conversation about Subaru.

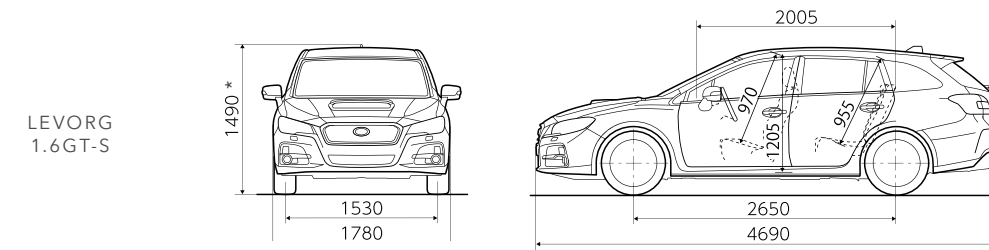


[facebook.com/SUBARU.GLOBAL](https://facebook.com/SUBARU.GLOBAL)

### Facebook

Stay connected to our diverse Subaru community and be the first to hear the latest news directly from Subaru.

## DIMENSIONS



\* The 1.6 GT model has a height of 1,485 mm.

Dimensions are measured in accordance with standard measurement of Fuji Heavy Industries Ltd.

Fuji Heavy Industries Ltd. reserves the right to alter specifications and equipment without notice. Details of specifications, equipment, colour availability and the accessory lineup are subject to suit local conditions and requirements. Please inquire at your local dealer for details of any changes that might be required for your area.





**SUBARU**

*Confidence in Motion*

**FUJI HEAVY INDUSTRIES LTD**  
subaru-global.com

Printed in Belgium (16GTWECEN-01)