

L200





The original and the best

For over twenty years Mitsubishi's L200 has continued to raise the bar when it comes to hard-working vehicles. Its fluid lines are a world away from its boxy rivals and it has been almost entirely responsible for the market's growth, proving that hard-working vehicles and passenger car comfort can go hand in hand. In terms of build-quality, reliability and specification, style, space and comfort, it still sets the standards to which others aspire.

It is tough, strong and supremely safe, achieving a four-star EuroNCAP rating. Above all, in terms of handling no other pick-up comes close. Little wonder that the press continues to heap it with praise and it has cleaned up on awards more times than all the rest put together. If you need a workhorse with a dash of brilliance check out the many variants of the L200. After all, why settle for a copy when you can have the original?





Main image shows L200 Double Cab Warrior with optional Sports Bar and stainless steel rear bar.

Setting standards on the road

This fourth-generation L200 was the very first pick-up to introduce car-like driving standards into a heavy duty vehicle. It was the first pick-up to replace the old torsion bar front suspension system with independent double wishbones and coiled springs – just as tough, just as workmanlike, but a far better ride. It was the first pick-up to utilise power assisted rack and pinion steering, so it's easier to drive and turns the tightest circle by far – a real boon when parking or manoeuvring around our crowded streets. It was the first pick-up to include an electronic traction control system, for vastly improved handling in tricky situations, and the double cab remains the only one on the market to offer both a full-time on-road four-wheel drive capability and the option to select fuel-saving two-wheel drive for everyday use. Now why would you ever settle for less?

Driving force

The L200's 2.5 litre, turbocharged, intercooled engine is clean and economical, easily meeting Euro 5b emissions criteria and returning an exceptional 35.8 mpg on the combined cycle. Acceleration is lively and it feels quicker than the figures would lead you to believe, but if you still need rather more oomph the Trojan, Warrior, Barbarian and Walkinshaw Performance models are true pick-up GTIs: the 175 bhp output results in a three second improvement on the 0-62 mph figures and provides amongst the best power to weight ratio of any pick-up in the UK.





Main image shows L200 Double Cab Barbarian interior.

Class act

Well-designed and well-equipped are not words normally associated with a pick-up but this is yet another area where the L200 shows its class – some models even include a fully integrated satellite navigation/audio system together with reversing camera and Bluetooth hands-free 'phone connection. Always perfectly combining comfort with practicality there's a level of specification to suit your needs precisely, as well as an enormous range of accessories from which you can cherry pick.



A reversing camera is a real boon to the pick-up driver. It is standard on Barbarian and Walkinshaw Performance models.



Standard leather seats for the L200 Barbarian.



Standard leather seats for the L200 Walkinshaw Performance upgrade.

Transmission talk

Warrior, Barbarian and Walkinshaw Performance models offer a choice of manual transmission or Mitsubishi's highly acclaimed INVECS-II automatic system. There's no denying that automatic transmission makes for an easier life, particularly when towing or in stop/start urban traffic, but INVECS-II goes one step further. By emulating your driving style it changes gear as you do – quickly adapting its shift pattern to change at higher revs when you're in a rush, or lower revs when you're feeling more relaxed. When you want to be in total control you can simply slip into Sports Mode and flick the lever to change gear manually.





Main image shows L200 Double Cab Warrior interior (black leather available as option).

Space craft

The L200 is far from being the biggest pick-up around, yet Mitsubishi's vast experience in making every millimetre count meant that it set the benchmark for cabin space. But this vehicle isn't about size, it's about paying attention to the job in hand. It's about making the most of all that space with comfortable seats, complete with height adjustment for the driver. It's about looking after passengers with head restraints all round for comfort and safety, and it's about truly clever storage which means that your pick-up keeps in peak condition no matter who you have on board.



The optional accessory reversing camera's display appears in the driving mirror. (For vehicles without integrated navigation system.)



Clever Thinking

On some double cab models an electrically operated rear cab window provides easy access to the load area – just one example of the care which has gone into this pick-up's design.



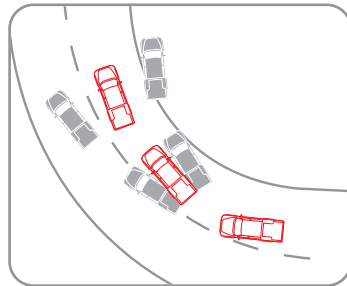


Picking up stars in the safety stakes

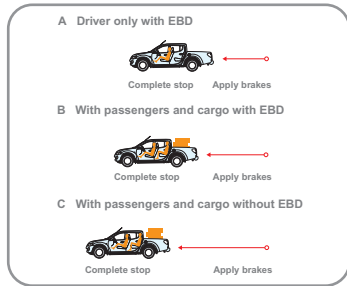
The L200 is tough, strong and supremely safe: indeed, so comprehensive are its safety measures that it has achieved a four-star EuroNCAP rating. It was the first pick-up to feature a traction control system and it is this system which contributes significantly towards the L200's superior handling. Mitsubishi's Active Stability and Traction Control (M-ASTC) with Brake Assist operates in both on- and off-road situations and ensures maximum grip under all driving conditions by simultaneously activating the correct brakes to maintain traction whilst redistributing power to the wheels with the most grip.

Of course, the greater the load the harder it is to stop, and this is particularly relevant in a pick-up. Mitsubishi's Anti-Lock Braking System features Electronic Brake-force Distribution (EBD) which adjusts the level of braking power applied, depending upon the load, between the front and rear wheels.

Incorporating Mitsubishi's RISE (Reinforced Impact Safety Evolution) the L200's body combines an exceptionally strong ladder-frame chassis, front crumple zones which absorb impact energy, and strategic reinforcement which helps to maintain cabin integrity and so protect occupants.



Active Stability Control



ABS with EBD



RISE (Reinforced Impact Safety Evolution)

Walk on the wild side

For many, many years Mitsubishi have been acknowledged to be the masters of tough terrain and the L200 reaps all the considerable benefits of this expertise. The Super Select system – long tested in the Shogun and unique in the world of pick-ups – enables on-road driving with either two or four wheels engaged, providing extra grip on the asphalt when you need it. Two four-wheel drive modes for use off-road will ensure that you can get out of just about anything you care to get into! The Easy Select system, featured on all 4Work and 4Life models, provides rear-wheel drive on-road and the same two off-road modes as the Super Select system. In addition it also features a heavy-duty rear differential lock, which locks the differential so that both rear wheels turn together and so provides extra traction when the going gets really, really tough!

Super Select



2H (2WD high range is generally best for highway cruising or city driving, giving smooth, economical performance. As driving conditions change, so can this L200 – on the move. At speeds of up to 62mph you can shift between 2H, 4H and 4HLc without even needing to use the clutch.



4H: 4WD high range is the full-time 4WD mode available only on the Super Select system. Torque is split equally between front and rear axles, offering the extra grip needed for safe highway driving in slippery conditions. The centre differential with VCU resolves the traditional 4WD problem of transmission wind-up experienced during cornering and tight manoeuvres.



4HLc: In 4WD high range with the centre differential locked power is evenly distributed between the front and rear wheels, improving traction and manoeuvrability on rough roads or on sandy or snow-covered surfaces.



4LLc: 4WD low range with the centre differential locked lowers the centre differential gear ratio. This provides greater torque for climbing or descending steep inclines at very low speeds, or for going through deep snow, mud or sand. To shift into or out of 4LLc the L200 must be brought to a complete halt.



Main image shows L200 Double Cab Trojan with optional stainless steel rear bar with step.

Trojan horsepower

A superbly specified double cab model offering fantastic value, the L200 Trojan is the performance model which will also get you out of the stickiest circumstances. This is the only L200 model to combine the 175bhp high-power output and Super Select 4-wheel drive with a heavy-duty rear differential lock to give extra traction in the very toughest of tough off-road situations. It looks the part, too, with touches of chrome and colour keyed features in all the right places, as well as great attention to detail including front fog lights, tubular side steps, alloy wheels and privacy glass. Without doubt, for some the Trojan offers the best of all possible worlds.





Main image shows L200 Double Cab 4Life with optional Adventurer Commercial Top.

In for the long haul

Whether your L200 remains confined to the workplace, or doubles as a companion in your leisure time, you'll find it an easy vehicle to live with. For one thing, for company vehicle owners and drivers it enjoys all the considerable tax advantages of a light commercial vehicle, even if you fit a canopy. For another it's refreshingly frugal at the pumps.

me & my MITSUBISHI

When you buy a new Mitsubishi, you not only get a safe and reliable vehicle that is a real pleasure to drive, you also become part of the Mitsubishi family. And as our nearest and dearest, we want you to feel protected should you ever encounter a problem – that's why we have **me&my**.

All new L200s are provided with a comprehensive three-year, 100,000-mile warranty. Please ask your Authorised Mitsubishi Dealer for full details.

With the **Mitsubishi Assistance Package (MAP)** we go the extra mile. Our assistance programme is there to help should you breakdown at the roadside or at home. It provides vehicle recovery following a breakdown or accident and help if your vehicle is stolen or vandalised

and, if you should accidentally fill up with the wrong fuel, don't worry – we'll be there for you then too. What's more, you're covered 24/7 in over 30 countries throughout Europe. So whether you're on the daily school run or cruising through the Alps on your holidays, it's comforting to know that if the unexpected does happen, help is always at hand.

And should you be unlucky enough to have an accident we have **Mitsubishi First** – our customer support service for all Mitsubishi drivers following an accident. No matter which insurer you use, Mitsubishi First smoothes your progress through an insurance claim, handling everything on your behalf – no hassle, no claim forms, no running about, and absolutely no cost to you.

And once you're part of the family...

Service with a smile

A **Mitsubishi Service Plan**, purchased at the same time as your L200, covers the first three scheduled services for a modest sum. It can be included in your vehicle's finance and transferred to a new owner when you sell.

Mitsubishi Motors also offer superior **insurance** cover at a competitive price which is specifically designed for Mitsubishi vehicles and uses only genuine parts and approved repair centres.

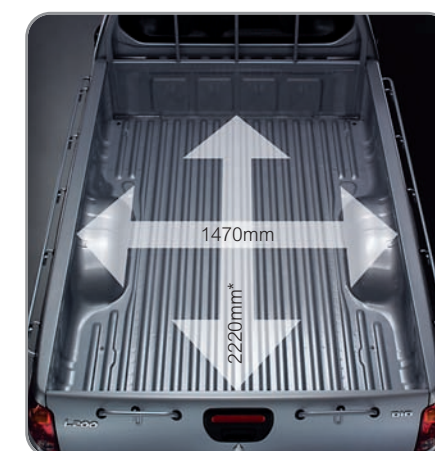
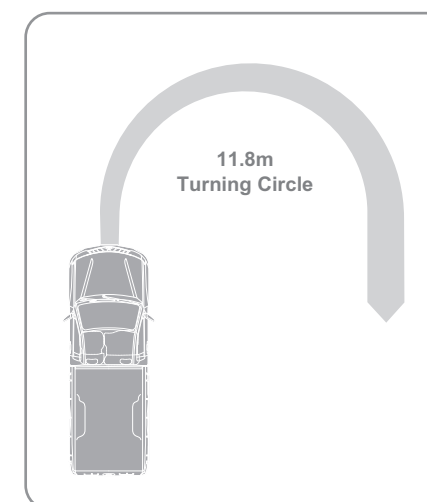


Ladder rack for Club Cab and Double Cab.

Visit www.mitsubishi-cars.co.uk/L200 to see the complete range of accessories.

Load lover

With a double-walled cargo bed made from galvanized steel and with a single, central tailgate release – after all, you only have one pair of hands – the L200 really cares for your load. On 4Work and 4Life models the tailgate may be dropped 180° or locked into the horizontal position to accommodate overlength loads.



*Single Cab illustrated – load bed length is 1805mm on Club Cab

The no-nonsense club

Whilst the Mitsubishi L200 has both the brains and the body to take you far beyond the workplace, it's conceivable that you may neither want nor need to. 4Work and 4Life specifications provide a no-nonsense work ethic, giving you everything you need to do the job in hand – excellent visibility, that superb turning circle and a large, clear, double-walled cargo bed. Available in a choice of single, club or double cab body styles they offer a multitude of load-lugging options, the club cab being perhaps the most flexible. Here two rear seats provide occasional seating for extra passengers whilst a load bed in excess of 1.8m long ensures extra-generous cargo space.



Club Cab rear seats





Single-minded about work

If you're really single-minded about cargo, the L200 single cab has all the answers – superior capacity, both inner and outer load lashing facilities and a guard frame which separates cab from cargo area to ensure that your load stays right where it's meant to be. In the cab, as with all 4Work and 4Life models, there's the option to fit a digital tachograph as well as loads of well-thought-out storage spaces. The controls are large, clear, easy to use and ergonomically designed to be at your fingertips, the seats firm yet comfortable, with plenty of support for the driver and a steering column which can be adjusted for rake.



Truckman Top for Single Cab.

Visit www.mitsubishi-cars.co.uk/L200 to see the complete range of accessories.



Accessories

A wide range of accessories is available to help fine-tune the L200 into the exact load-lugger you need, all of which enjoy the same exceptional warranty as the vehicle itself if fitted when new. Throughout this brochure are just a few examples, but to see the complete range visit www.mitsubishi-cars.co.uk/L200.



1. Aluminium tonneau cover
2. Fullbox (not available for Trojan)
3. Retractable tonneau cover; shown with Sports Bar (combination not available for Trojan) and under-rail load liner
4. Soft-type load liner
5. Over-rail load liner



6. Roll-up type tonneau cover (not available for Trojan)
7. Adventurer Top (alternatives available depending on model)
8. Under-rail load liner
9. Sport Lid (not available for Trojan)
10. Stainless steel side bar
11. Towbar with wiring kit (various types available, consult your dealer for details)
12. Rear parking sensors



L200 Single Cab 4Work/4Life

Key features

4Work:

- Easy Select 4WD system with rear differential lock
- Manual transmission • ABS with EBD • Dual SRS airbags
- Rear fog lamp • Stereo radio/CD/MP3 player • Ladder rack



4Life specification as 4Work plus:

- Central door locking with remote keyless entry
- Electric windows • Air conditioning



13. Le Mans 3 20" alloy wheel/tyre (Warrior/Barbarian – also available with matt black finish)
14. Chrome rear lamp bezels
15. Stainless steel door handle recess covers
16. Stainless steel tailgate handle cover



17. Bluetooth® hands-free telephone kit
18. Reversing camera/rear view mirror kit
19. Textile mat set
20. Rubber mat set

L200 Club Cab 4Work/4Life

4Work:

- Easy Select 4WD system with rear differential lock
- Manual transmission • ABS with EBD • Dual SRS airbags
- Rear fog lamp • Stereo radio/CD/MP3 player
- Colour-keyed front bumper • Black and chrome front grille

4Life specification as 4Work plus:

- Central door locking with remote keyless entry
- Electric windows
- Air conditioning
- Side steps



L200 Double Cab 4Work

Key features

- Easy Select 4WD system with rear differential lock
- Manual transmission • ABS with EBD • Dual SRS airbags
- Rear fog lamp • Stereo radio/CD/MP3 player with 4 speakers
- Colour-keyed front bumper • Black and chrome front grille



L200 Double Cab 4Life

Key features

- Easy Select 4WD system with rear differential lock
- Manual transmission • ABS with EBD • Dual SRS airbags
- Rear fog lamp • Stereo radio/CD/MP3 player with 4 speakers
- Colour-keyed front bumper • Black and chrome front grille
- Central door locking with remote keyless entry
- Electric windows • Air conditioning • Side steps



L200 Double Cab Trojan / Trojan Black

Key features

- Super Select 4WD system • Rear differential lock • Manual transmission • 175 bhp engine
- Trojan graphics • ABS with EBD • Dual SRS airbags • Front and rear fog lamps
- Colour-keyed front bumper • 16" alloy wheels with colour-keyed wheelarch extensions
- Tubular side steps • Chrome door mirrors and handles • Black and chrome front grille
- Central door locking with remote keyless entry • Electric windows including rear screen
- Climate controlled air conditioning • Privacy glass • Stereo radio/CD/MP3 player with 6 speakers • Electric door mirrors

Trojan Black: Specification as above plus black roof panel and black alloy wheel finish



L200 Double Cab Warrior

Key features

- Super Select 4WD system • Mitsubishi Active Stability and Traction Control • Manual or automatic transmission
- 175 bhp engine • Warrior graphics • ABS with EBD • Dual SRS airbags • Front and rear fog lamps • Colour-keyed front bumper
- 17" alloy wheels with colour keyed wheelarch extensions • Tubular side steps • Chrome door mirrors and handles • Black and chrome front grille • Central door locking with remote keyless entry
- Electric windows including rear screen • Climate controlled air conditioning • Cruise control
- Privacy glass • Stereo radio/CD/MP3 player with 6 speakers • Electric door mirrors



L200 Double Cab Barbarian / Barbarian Black

Key features

- Super Select 4WD system • Mitsubishi Active Stability and Traction Control • Manual or automatic transmission • 175 bhp engine
- Barbarian graphics • ABS with EBD • Dual SRS airbags • Front and rear fog lamps • Colour-keyed front bumper
- 17" alloy wheels with colour-keyed wheelarch extensions • Tubular side steps • Chrome rear lamp bezels, door mirrors and handles
- Reversing camera • Central door locking with remote keyless entry • Electric windows including rear screen
- Climate controlled air conditioning • Cruise control • Satellite navigation system and multi-display station with touch-screen operation
- Leather seats with Barbarian logo • Heated front seats • Privacy glass • Bluetooth hands-free kit
- Stereo radio/CD/MP3 player with 6 speakers • USB/AUX port • Electric door mirrors
- Illuminated door entry guards • Remote audio controls

Barbarian Black: Specification as above plus black roof panel and black alloy wheel finish



L200 Double Cab Walkinshaw Performance

(Post-registration upgrade)

Key features – specification as L200 Double Cab Barbarian plus:

- 20" alloy wheels • 5-link coil spring rear suspension • Stainless steel twin-exit exhaust system • Walkinshaw Performance graphics • Leather seats with Walkinshaw Performance logo • Door entry guards



Dramatically improving both ride and handling, a sophisticated five-link rear suspension layout and coil springs replace the L200's standard system. To this are added Koni performance dampers at front and rear and polyurethane performance suspension bushes for increased axle control. Rubber performance suspension bushes to the chassis help reduce road noise and a stainless steel, twin exit exhaust system hints at the L200 Walkinshaw Performance model's enhanced capabilities.



Technical Specifications

Model		L200 Single Cab 4Work/4Life Manual	L200 Club Cab 4Work/4Life Manual	L200 Double Cab Long Bed 4Work/4Life Manual	L200 Double Cab Standard Bed Trojan Manual	L200 Double Cab Long Bed Warrior Manual/Automatic	L200 Double Cab Long Bed Barbarian Manual/Automatic	L200 Double Cab Long Bed Walkinshaw Performance* Manual/Automatic
Engine		In-line 4-cylinder 16-valve DOHC diesel engine, turbocharger with intercooler			In-line 4-cylinder 16-valve DOHC diesel engine, turbocharger with intercooler		In-line 4-cylinder 16-valve DOHC diesel engine, turbocharger with intercooler	
Engine type								
Fuel system		Diesel, electronic common-rail direct injection			Diesel, electronic common-rail direct injection		Diesel, electronic common-rail direct injection	
Emissions control system								
		Oxidation catalytic converter with closed flow Diesel Particulate Filter			Oxidation catalytic converter with closed flow Diesel Particulate Filter		Oxidation catalytic converter with closed flow Diesel Particulate Filter	
Displacement	cc	2477	2477	2477	2477	2477	2477	2477
Bore/stroke	mm	91.1 x 95.0	91.1 x 95.0	91.1 x 95.0	91.1 x 95.0	91.1 x 95.0	91.1 x 95.0	91.1 x 95.0
Compression ratio		16.5	16.5	16.5	16.5	16.5	16.5	16.5
Maximum output	kW (bhp) at rpm	100 (134)/4000	100 (134)/4000	100 (134)/4000	131 (175)/3750	131 (175)/3750	131 (175)/3750	131 (175)/3750
Maximum torque	Manual Nm (lb.ft) at rpm	314 (231)/1500-2680	314 (231)/1500-2680	314 (231)/1500-2680	400 (295)/2000-2850	400 (295)/2000-2850	400 (295)/2000-2850	400 (295)/2000-2850
	Automatic Nm (lb.ft) at rpm	–	–	–	–	350 (258)/1800-3500	350 (258)/1800-3500	350 (258)/1800-3500
Performance/Fuel Consumption/Emissions								
Maximum speed	mph (kph)	103 (167)	103 (167)	103 (167)	111 (179)	111 (179) [109 (175)]	111 (179) [109 (175)]	111 (179) [109 (175)]
Acceleration 0-62 mph	secs	15.2	15.0	15.0	12.1	12.1 [13.0]	12.1 [13.0]	12.1 [13.0]
lts/100km (mpg)	Urban mode	8.9 (31.7)	9.1 (31.0)	9.1 (31.0)	9.2 (30.7)	9.2 (30.7) [10.6 (26.6)]	9.2 (30.7) [10.6 (26.6)]	9.2 (30.7) [10.6 (26.6)]
	Extra urban mode	6.8 (41.5)	7.0 (40.4)	7.0 (40.4)	7.2 (39.2)	7.2 (39.2) [7.9 (35.8)]	7.2 (39.2) [7.9 (35.8)]	7.2 (39.2) [7.9 (35.8)]
	Combined	7.5 (37.7)	7.7 (36.7)	7.7 (36.7)	7.9 (35.8)	7.9 (35.8) [8.8 (32.1)]	7.9 (35.8) [8.8 (32.1)]	7.9 (35.8) [8.8 (32.1)]
CO ₂ emissions	g/km	199	204	204	208	208 [233]	208 [233]	208 [233]
Emissions compliance		EU-5b	EU-5b	EU-5b	EU-5b	EU-5b	EU-5b	EU-5b
Suspension/Steering								
Front axle		Independent, double wishbone with coil springs	Independent, double wishbone with coil springs	Independent, double wishbone with coil springs	Independent, double wishbone with coil springs	Independent, double wishbone with coil springs	Independent, double wishbone with coil springs	Independent, double wishbone, coil springs with Koni shock absorbers
Rear axle		Rigid, elliptic leaf springs	Rigid, elliptic leaf springs	Rigid, elliptic leaf springs	Rigid, elliptic leaf springs	Rigid, elliptic leaf springs	Rigid, elliptic leaf springs	5-link, coil springs with Koni shock absorbers
Brakes		Anti-lock Braking System with Electronic Brakeforce Distribution (ABS with EBD)			Anti-lock Braking System with Electronic Brakeforce Distribution (ABS with EBD)		Anti-lock Braking System with Electronic Brakeforce Distribution (ABS with EBD)	
	Front	294mm (11.6") vent. discs	294mm (11.6") vent. discs	294mm (11.6") vent. discs	294mm (11.6") vent. discs	294mm (11.6") vent. discs	294mm (11.6") vent. discs	294mm (11.6") vent. discs
	Rear	295mm (11.6") drums	295mm (11.6") drums	295mm (11.6") drums	295mm (11.6") drums	295mm (11.6") drums	295mm (11.6") drums	295mm (11.6") drums
Steering		Rack and pinion, power-assisted	Rack and pinion, power-assisted	Rack and pinion, power-assisted	Rack and pinion, power-assisted	Rack and pinion, power-assisted	Rack and pinion, power-assisted	Rack and pinion, power-assisted
Min. turning circle	m (ft)	11.8 (38.7)	11.8 (38.7)	11.8 (38.7)	11.8 (38.7)	11.8 (38.7)	11.8 (38.7)	11.8 (38.7)
Tyres		205/80R16 108R	205/80R16 104S	205/80R16 104S	245/70R16 111S	245/65R17 111S	245/65R17 111S	255/50R20 109Y
Wheels		16" X 6JJ Steel	16" X 6JJ Steel	16" X 6JJ Steel	16" x 7JJ Alloy	17" x 7JJ Alloy	17" x 7JJ Alloy	20" x 8.5JJ Alloy
Driveline/Transmission								
Type		Easy Select 4WD	Easy Select 4WD	Easy Select 4WD	Super Select 4WD	Super Select 4WD with Mitsubishi Active Stability & Traction Control and Brake Assist		
Rear differential lock		STD	STD	STD	STD	–	–	–
Clutch	Manual	Hydraulic	Hydraulic	Hydraulic	Hydraulic	Hydraulic	Hydraulic	Hydraulic
	Automatic	–	–	–	–	Torque converter	Torque converter	Torque converter
Transmission	Manual	5-speed	5-speed	5-speed	5-speed	5-speed	5-speed	5-speed
	Automatic	–	–	–	–	5-speed INVECS-II with Sports Mode manual shift facility		
Gear ratios	1st	4.313	4.313	4.313	4.313	4.313 [3.789]	4.313 [3.789]	4.313 [3.789]
	2nd	2.330	2.330	2.330	2.330	2.330 [2.057]	2.330 [2.057]	2.330 [2.057]
	3rd	1.436	1.436	1.436	1.436	1.436 [1.421]	1.436 [1.421]	1.436 [1.421]
	4th	1.000	1.000	1.000	1.000	1.000 [1.000]	1.000 [1.000]	1.000 [1.000]
	5th	0.788	0.788	0.788	0.788	0.788 [0.731]	0.788 [0.731]	0.788 [0.731]
	Reverse	4.220	4.220	4.220	4.220	4.220 [3.865]	4.220 [3.865]	4.220 [3.865]
Transfer gear ratio	High/Low	1.000/1.900	1.000/1.900	1.000/1.900	1.000/1.900	1.000/1.900	1.000/1.900	1.000/1.900
Final gear ratio		3.917	3.917	3.917	3.917	3.917	3.917	3.917
Dimensions								
Exterior l x w x h	mm	5040 x 1750 x 1775	5120 x 1750 x 1775	5185 x 1750 x 1775	5005 x 1815 x 1780	5185 x 1815 x 1780	5185 x 1815 x 1780	5185 x 1815 x 1780
Loadbed								
Length x width x height	mm	2220 x 1470 x 405	1805 x 1470 x 460	1505 x 1470 x 460	1325 x 1470 x 405	1505 x 1470 x 460	1505 x 1470 x 460	1505 x 1470 x 460
Width between wheelarches	mm	1085	1085	1085	1085	1085	1085	1085
Cargo floor height	mm	845	855	845	850	850	850	850
Ground clearance (unladen)	mm	200	200	200	205	205	205	205
Track Front/Rear	mm	1505/1500	1505/1500	1505/1500	1520/1515	1520/1515	1520/1515	1520/1515
Wheelbase	mm	3000	3000	3000	3000	3000	3000	3000
Approach angle	degrees	32.7	32.7	32.7	33.4	33.4	33.4	33.4
Departure angle	degrees	27.2	24.4	24.7	23.8	23.8	23.8	23.8
Ramp breakover	degrees	26.3	24.4	24.4	24.7	24.7	24.7	24.7
Weights/Volumes								
Seating capacity		2	4	5	5	5	5	5
Fuel tank capacity	lts (imp.galls)	75 (16.5)	75 (16.5)	75 (16.5)	75 (16.5)	75 (16.5)	75 (16.5)	75 (16.5)
Gross vehicle weight	kg (lbs)	2890 (6372)	2850 (6284)	2900 (6393)	2930 (6460)	2930 (6460) [2945 (6493)]	2930 (6460) [2945 (6493)]	2930 (6460) [2945 (6493)]
Kerb weight ^{*1}	kg (lbs)	1745 (3847)	1800 (3968)	1830 (4034)	1875 (4134)	1875 (4134) [1885 (4156)]	1875 (4134) [1885 (4156)]	1875 (4134) [1885 (4156)]
Max payload capacity ^{*2}								
(for tax purposes)	kg (lbs)	1145 (2524)	1050 (2315)	1070 (2359)	1055 (2326)	1055 (2326) [1060 (2337)]	1055 (2326) [1060 (2337)]	1055 (2326) [1060 (2337)]
Towing capacity	Braked kg (lbs)	2700 (5954)	2700 (5954)	2700 (5954)	2700 (5954)	2700 (5954)	2700 (5954)	2700 (5954)
	Unbraked kg (lbs)	750 (1654)	750 (1654)	750 (1654)	750 (1654)	750 (1654)	750 (1654)	750 (1654)
Trailer nose weight	kg (lbs)	115 (254)	115 (254)	115 (254)	115 (254)	115 (254)	115 (254)	115 (254)
Servicing/Warranty								
Service intervals		Every 9,000 miles or 12 months, whichever occurs first			Every 9,000 miles or 12 months, whichever occurs first		Every 9,000 miles or 12 months, whichever occurs first	
Warranty		3 year/100,000 mile warranty, 12 year anti-corrosion perforation warranty, 3 year pan-European roadside, home and accident assistance			3 year/100,000 mile warranty, 12 year anti-corrosion perforation warranty, 3 year pan-European roadside, home and accident assistance		3 year/100,000 mile warranty, 12 year anti-corrosion perforation warranty, 3 year pan-European roadside, home and accident assistance	

[] Figures apply to automatic transmission *The L200 Walkinshaw Performance model is a post-registration upgrade based on the Barbarian.

Important Information: The weights quoted apply to vehicles in standard condition. The operator must ensure compliance with plated axle weights embossed on the vehicle identification plate.

^{*1}Kerb weight excludes an allowance of 75kgs for a driver, but includes the weights of oil, engine coolant, operational fluids, fuel tank filled to 100%, toolkit and spare wheel, as defined by

HM Revenue and Customs. ^{*2}Maximum payload capacity as defined by HM Revenue and Customs for VAT purposes.

Standard and Optional Equipment

Model	Single Cab 4Work/4Life Manual	Club Cab 4Work/4Life Manual	Double Cab 4Work/4Life Manual	Double Cab Trojan / Trojan Black Manual	Double Cab Warrior Man/Auto	Double Cab Barbarian / Barbarian Black Man/Auto	Double Cab Walkinshaw Performance* Man/Auto
Security and Safety Features							
Security							
Alarm	DFO	DFO	DFO	■	■	■	■
Immobiliser, engine	■	■	■	■	■	■	■
Keyless entry	●	●	●	■	■	■	■
Locking wheel nuts	–	–	–	■	■	■	■
Rear floor hidden compartment	–	■	–	–	–	–	–
Visible VIN	■	■	■	■	■	■	■
Safety							
ABS with EBD	■	■	■	■	■	■	■
Airbag SRS, driver's and front passenger's	■	■	■	■	■	■	■
Airbag, front passenger deactivation switch	■	■	■	■	■	■	■
Child proof rear door locks	–	–	■	■	■	■	■
Collapsible steering column	■	■	■	■	■	■	■
Electric anti-trapping windows, front	●	●	●	■	■	■	■
Electric anti-trapping windows, rear	–	–	●	■	■	■	■
Electric anti-trapping window, rear cab	–	–	–	■	■	■	■
High-mount stop lamp, rear	■	■	■	■	■	■	■
ISO-Fix child seat mountings	–	–	■	■	■	■	■
Mitsubishi Active Stability & Traction Control (M-ASTC) with Brake Assist	–	–	–	–	■	■	■
Reversing camera	–	–	–	–	–	■	■
Seatbelts, 3-point ELR x 2 with force limiters and pretensioners, front	■	■	■	■	■	■	■
Seatbelts, 3-point ELR x 2, rear	–	■	–	–	–	–	–
Seatbelts, 3-point ELR x 3, rear	–	–	■	■	■	■	■
Side impact door bars	■	■	■	■	■	■	■
Exterior Features							
Styling							
16" steel wheels	■	■	■	–	–	–	–
16" alloy wheels	DFO	DFO	DFO	■	–	–	–
17" alloy wheels	–	–	–	–	■	■	–
20" alloy wheels	–	–	–	–	–	–	■
Alloy wheel satin black paint finish	–	–	–	Black	–	Black	–
Door mirrors and handles, black	■	■	■	–	–	–	–
Door mirrors and handles, chrome	–	–	–	■	■	■	■
Front bumper, black	■	–	–	–	–	–	–
Front bumper, colour-keyed	–	■	■	■	■	■	■
Front grille, black	■	–	–	–	–	–	–
Front grille, black and chrome	–	■	■	■	■	■	■
Fuel filler cap and tailgate handle trim, stainless steel	–	–	–	DFO	DFO	■	■
Metallic or pearlescent paint finish	□	□	□	□	□	□	□
Mudflaps, front and rear	■	■	■	■	■	■	■
Privacy glass, rear windows	–	–	–	■	■	■	■
Rear lamp bezels, chrome finish	–	–	–	DFO	DFO	■	■
Rear under-guard bar, black	■	■	■	■	■	–	–
Rear under-guard bar, stainless steel	–	–	–	DFO	DFO	■	■
Roof panel, satin black finish	–	–	–	Black	–	Black	–
Side steps, straight type	–	●	●	–	–	–	–
Side steps, tubular type	–	–	–	■	■	■	■
Spare wheel, 16" steel, underfloor-mounted	■	■	■	■	–	–	–
Spare wheel, 17" alloy, underfloor-mounted	–	–	–	–	■	■	■
Twin-exit performance exhaust system, stainless steel	–	–	–	–	–	–	■
Wheelarch extensions, colour-keyed	–	–	–	■	■	■	■
Functional							
Central door locking, remote	●	●	●	■	■	■	■
Central tailgate handle	■	■	■	■	■	■	■
Differential lock, rear	■	■	■	■	–	–	–
Door mirrors, manually adjustable	■	■	■	–	–	–	–
Door mirrors, electrically adjustable/heated/folding	–	–	–	■	■	■	■
Fog lamps, reflector type, front	DFO	DFO	DFO	■	■	■	■
Headlamps, automatic light sensor	–	–	–	–	■	■	■
Ladder rack, colour-keyed	■	DFO	DFO	–	–	–	–
Load bed and tailgate, double-walled	■	■	■	■	■	■	■
Load bed inner hooks x 4	–	–	–	■	–	–	–
Load bed inner hooks x 6	■	■	■	–	■	■	■
Load bed outer hook bars, colour-keyed	■	–	–	–	–	–	–
Opening rear quarter windows, butterfly-type	–	■	–	–	–	–	–
Skid plate, front	■	■	■	■	■	■	■
Window demister with timer, rear	■	■	■	■	■	■	■
Wipers, automatic rain sensor	–	–	–	–	■	■	■
Wipers, variable intermittent with washer, front	■	■	■	■	■	■	■
Interior Features							
Audio/Navigation/Communications							
Aerial, centre roof mounted	–	■	■	■	■	■	■
Aerial, front pillar mounted	■	–	–	–	–	–	–
Bluetooth hands-free telephone kit	DFO	DFO	DFO	DFO	DFO	■	■

■ : Standard ● : 4Life models only □ : Option at additional cost – : Not available DFO : Dealer Fit Option at additional cost
*The L200 Walkinshaw Performance model is a post-registration upgrade based on the Barbarian.

Model	Single Cab 4Work/4Life Manual	Club Cab 4Work/4Life Manual	Double Cab 4Work/4Life Manual	Double Cab Trojan / Trojan Black Manual	Double Cab Warrior Man/Auto	Double Cab Barbarian / Barbarian Black Man/Auto	Double Cab Walkinshaw Performance* Man/Auto
DAB digital radio	–	–	–			■	■
Integrated satellite navigation system with touch-screen control	–	–	–	DFO	DFO	■	■
RDS (Radio Data System) information	■	■	■	■	■	■	■
Stereo radio/CD/MP3 player and 2 speakers	■	■	–	–	–	–	–
Stereo radio/CD/MP3 player and 4 speakers	–	–	■	–	–	–	–
Stereo radio/CD/MP3 player and 6 speakers	–	–	–	■	■	■	■
TMC (Traffic Message Channel) information	–	–	–	–	–	■	■
USB/AUX input port	–	–	–	–	–	■	■
Styling							
Door entry guards, stainless steel, illuminated Barbarian logo	–	–	–	–	–	■	–
Door entry guards, stainless steel, L200 logo	–	–	–	–	–	–	■
Door handles, inner, chrome	–	–	–	■	■	■	■
Electric window switch panels, silver	–	–	–	■	■	■	■
Gear and transfer shift knobs, leather-wrapped, black	–	–	–	–	■	■	■
Seat trim, two-tone grey fabric	■	■	■	–	–	–	–
Seat trim, two-tone dark grey fabric	–	–	–	■	■	–	–
Seat trim, black leather with Trojan logo	–	–	–	□	–	–	–
Seat trim, black leather with Warrior logo	–	–	–	–	□	–	–
Seat trim, black leather with Barbarian logo	–	–	–	–	–	■	–
Seat trim, black leather with Walkinshaw Performance logo	–	–	–	–	–	–	■
Steering wheel, urethane	■	■	■	■	–	–	–
Steering wheel, black leather with cruise control buttons	–	–	–	–	■	–	–
Steering wheel, black leather with remote audio and cruise control buttons	–	–	–	–	–	■	■
Convenience							
Accessory socket, centre console	■	■	■	■	■	■	■
Air conditioning, manual	●	●	●	–	–	–	–
Air conditioning, climate control	–	–	–	■	■	■	■
Backrest pocket, driver's seat	–	–	–	□	□	■	■
Backrest pocket, front passenger's seat	–	–	■	■	■	■	■
Cup holders, front	■	■	■	■	■	■	■
Dashboard centre utility box	■	–	–	–	–	–	–
Dashboard centre utility box with lid	–	■	■	–	–	–	–
Door pockets with bottle holder, front	■	■	■	■	■	■	■
Door pockets with bottle holder, rear	–	–	■	■	■	■	■
Floor console box with lid	■	■	■	■	■	■	■
Glove box, illuminated	■	■	■	■	■	■	■
Glovebox, lockable	–	■	■	■	■	■	■
Illuminated ignition keyhole	–	■	■	■	■	■	■
Passenger's assist grip x 1	■	–	–	–	–	–	–
Passenger's assist grip x 3	–	■	■	■	■	■	■
Sunglasses holder	–	–	■	■	■	■	■
Sunvisors x 2	■	–	–	–	–	–	–
Sunvisors x 2 with driver's ticket holder and passenger's vanity mirror	–	■	■	■	■	■	■
Functional							
4WD drivetrain mode indicator	■	■	■	■	■	■	■
Cruise control	–	–	–	–	■	■	■
Digital clock, overhead type	■	■	■	–	–	–	–
Door mirrors, manually adjustable	■	■	■	–	–	–	–
Door mirrors, electrically adjustable/heated/folding	–	–	–	■	■	■	■
Electric windows with one-touch open/close, front	●	●	●	■	■	■	■
Electric windows with one-touch open/close, rear	–	–	●	■	■	■	■
Electric window with one-touch open/close, rear cab	–	–	–	■	■	■	■
Exterior temperature display	–	–	–	■	■	■	■
Headlamp levelling device	■	■	■	■	■	■	■
Instrument panel dimmer	–	–	–	■	■	■	■
Multi-info display	–	–	–	■	■	■	■
Electronic compass, barometer and altimeter	–	–	–	■	■	■	■
Odometer/trip meter with digital display	■	■	■	■	■	■	■
Steering wheel, tilt adjustable	■	■	■	■	■	■	■
Lighting							
Door courtesy lamps	–	–	●	■	■	■	■
Interior lamp	■	■	■	■	■	■	■
Map reading lamps, front	–	–	■	■	■	■	■
Seats							
Armrest, rear seat centre with cup holders	–	–	■	■	■	■	■
Driver's seat height adjustment	–	■	■	■	■	■	■
Front passenger's seat easy-entry rear access	–	■	–	–	–	–	–
Front seats, heated	–	–	–	–	–	■	■
Front seats, slide and recline adjustment	■	■	■	■	■	■	■
Front seatbelt anchors, height adjustable	–	■	■	■	■	■	■
Head restraints, height adjustable, front x 2	■	■	■	■	■	■	■
Head restraints x 2, rear	–	■	■	–	–	–	–
Head restraints, height adjustable x 3, rear	–	–	–	■	■	■	■
Rear seat fold-up cushions x 2	–	■	–	–	–	–	–

■ : Standard ● : 4Life models only □ : Option at additional cost – : Not available DFO : Dealer Fit Option at additional cost Black : Standard on Black models
*The L200 Walkinshaw Performance model is a post-registration upgrade based on the Barbarian.

Colour Options



Starlight Silver (M) Atlantic Grey (M) Granite Brown (M) Aztec Red (S)



Sapphire Blue (M) Polar White (S) Cosmos Black (P)

Model		Single Cab 4Work/4Life	Club Cab 4Work/4Life	Double Cab 4Work/4Life	Double Cab Trojan / Trojan Black**	Double Cab Warrior	Double Cab Barbarian / Barbarian Black**	Double Cab Walkinshaw Performance
Exterior colour								
Starlight Silver (M)	A66	■	■	■	■	■	■	■
Atlantic Grey (M)	U17	—	■	—	—	■	■	■
Granite Brown (M)	C06	—	—	—	—	■	■	■
Aztec Red (S)	R59	■	■	■	■	■	■	■
Sapphire Blue (M)	T64	—	—	—	—	■	■	■
Polar White (S)	W32	■	■	■	■	■	■	■
Cosmos Black (P)	X08	■	■	■	■	■	■	■
Seats		Fabric (Two-tone Grey)	Fabric (Two-tone Grey)	Fabric (Two-tone Grey)	Fabric (Dark Grey) or Leather (Black)	Fabric (Dark Grey) or Leather (Black)	Leather (Black)	Leather (Black)
Door trim		Resin (Grey)						
Headlining		Non-woven Fabric (Light Grey)						
Floor carpet		Needle Punch (Grey)						

■ : Available — : Not available M: Metallic* P: Pearlescent* S: Solid
*Metallic/pearlescent paint finish available at additional cost.
**L200 Double Cab Trojan Black and Barbarian Black models feature roof panels and alloy wheels finished in satin black.
Colours and trims reproduced on these pages may vary from the actual colours due to the limitations of the printing process used.

Seat Trims



Fabric (Two-Tone Grey) Trojan Black Leather Warrior Black Leather



Fabric (Dark Grey) Barbarian Black Leather Walkinshaw Performance Black Leather

Trojan and Barbarian Black



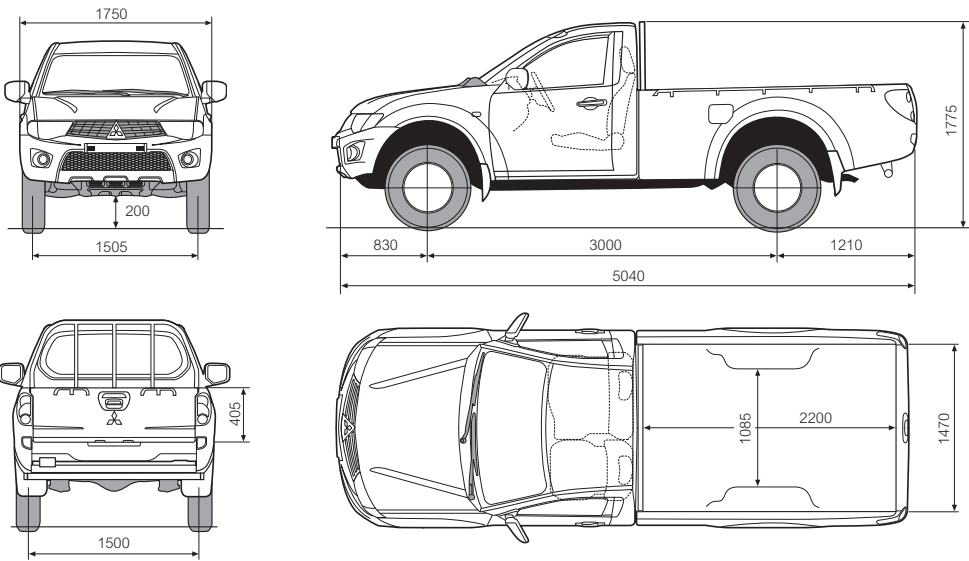
Black vinyl roof wrap



Available in all colour ways, the Trojan and Barbarian Black models' alloy wheels feature a black satin paint finish, complemented by a black satin vinyl wrap to the cab roof.

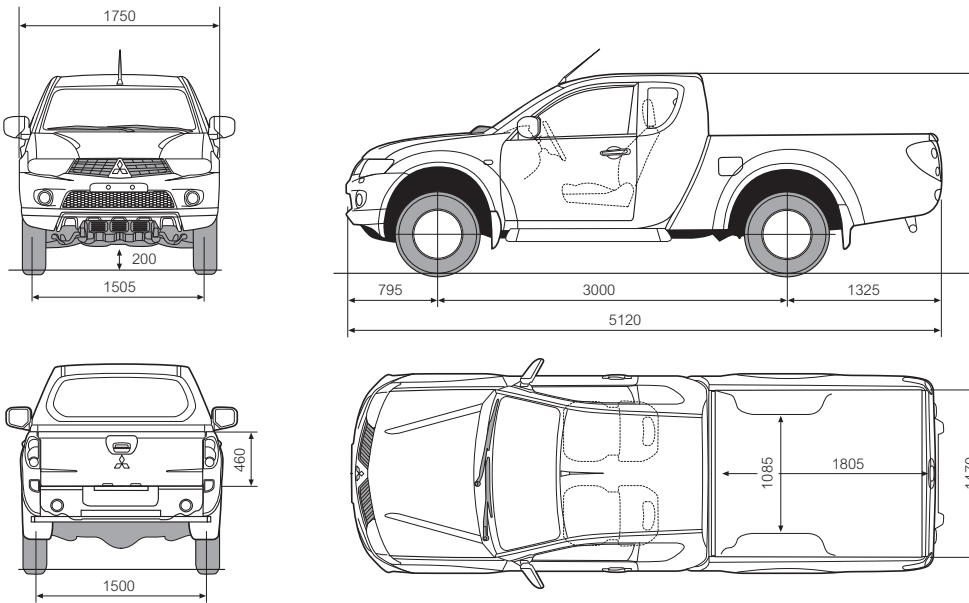
Black alloys

Dimensional Views



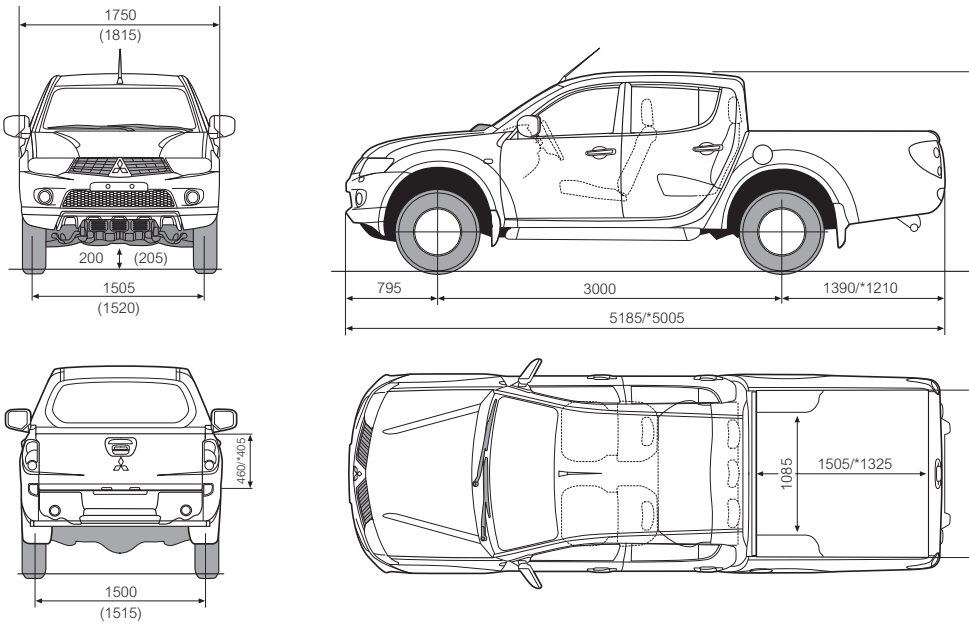
L200 Single Cab

All measurements in millimetres.



L200 Club Cab

All measurements in millimetres.



L200 Double Cab

All measurements in millimetres.
() Warrior/Barbarian/Walkinshaw Performance/Trojan
*Trojan

MITSUBISHI MOTORS RECYCLING

We all have a duty to protect the environment. After a long working life we will take back any Mitsubishi Motors vehicle originally sold by The Colt Car Company Ltd. and recycle it in an environmentally friendly manner in accordance with the EU Directive on End-of-Life Vehicles and any applicable national statutory provisions.

All Mitsubishi Motors vehicles sold by The Colt Car Company Ltd., irrespective of date of sale, will be taken back free of charge from the last owner, at one of the designated take-back points, provided the vehicle contains all major components and is free of waste.

For further information please visit www.cartakeback.com, email info@cartakeback.com or call the Cartakeback info-line on 0845 257 32 33.

The specification of the vehicles illustrated in this publication may not be applicable to the UK market, furthermore some vehicle illustrations may include accessory items which are not part of UK standard specification. However, every effort has been made to ensure that the written information was accurate, up-to-date and consistent with UK specification at the time of going to press. The right is reserved to change specification, features and prices without prior notice. To avoid any misunderstandings, your Mitsubishi Motors dealer will advise of any alterations made since the date of issue of this brochure. No part of this publication may be reproduced in any form or by any means, without the prior written permission of The Colt Car Company Limited.

Head Office: The Colt Car Company Ltd., Watermoor, Cirencester, Glos. GL7 1LF
Website: www.mitsubishi-cars.co.uk



This brochure has been produced by an ISO14001 environmentally accredited printer where all processes are managed and materials recycled. The paper used to produce this brochure is from sustainable forests, chlorine free and from an ISO14001 accredited mill. This brochure is fully recyclable.