



JAGUAR

The Legend Grows



....and Grows.

The exclusive attractions of a car that has become a legend in its own lifetime are now offered in three luxury sports cars bearing the name of Jaguar XJ-S. With the V12 engine distinguishing it as the ultimate Grand Tourer, the XJ-S H.E. leads two new models powered by a specially developed 3.6 litre Jaguar engine. The debut of the XJ-SC 3.6 Cabriolet and the XJ-S 3.6 Coupé marks the growth of a legend that is still in the making.

The 3.6 six-cylinder engine, bred from the racing tradition which created the unique V12, follows the Jaguar tradition of combining high-powered performance with whispering refinement. With the four-valve fuel-injected cylinder head design delivering 225bhp the response is instant and eager, but accompanied by only the faintest of big cat purrs from under the bonnet. Driven through a highly engineered five-speed manual transmission, the 3.6 engine endows each of the new models, Coupé and Cabriolet, with the dynamic yet effortless road manners that can only belong to a Jaguar XJ-S.

Offering levels of equipment and luxury to complement its spirited performance, the XJ-S 3.6 Coupé has unleashed fresh new power from the living legend. For those who seek the excitement of wind in the hair motoring within the most civilised driving environment, the XJ-SC 3.6 Cabriolet provides the irresistible answer. The XJ-S H.E. continues to offer the rarified experience of the unique V12 engine. The XJ-S legend grows and three supercats instead of one pose only one enticing problem — that of choosing.





JAGUAR XJ-S H.E. 5.3 V12



The unique qualities of a car powered by the only production V12 in the world derive not only from the breathtaking acceleration and a top speed of more than double the legal maximum. The hallmark of the V12's refinement is the leisurely ease with which the massive 295bhp is delivered. Driven through three-speed automatic transmission, and fed by an advanced Lucas-Bosch Digital Electronic fuel injection system, the V12 rarely gives the slightest audible indication of the power at work under the bonnet, even at speeds of over 150mph. The standard fitment of cruise control makes the longest journeys still more effortless. And the power is backed up by the safety of all-round disc brakes, anti-dive front suspension, and responsive, power-assisted rack and pinion steering. A headlamp wash/wipe system (optional on 3.6 Coupé and Cabriolet models) makes the fastest travel in the worst conditions safer still.







Inside the Jaguar XJ-S H.E., advanced driving equipment is harmoniously integrated with the timeless beauty of hand-crafted veneer and high quality hide. Behind the leather trimmed steering wheel, the speedometer (with trip recorder) and tachometer give a visual indication of the silent V12 at work. A battery condition indicator and oil pressure gauge provide additional monitoring, augmented by a clear and comprehensive array of warning lamps covering all major functions and safety systems. All the controls fall naturally to hand, from the two-speed wiper stalk which gives both flick and intermittent wipe facilities, to the indicators, horn and headlamp dip/flash stalk on the left.

Following the Jaguar credo of combining function with pure elegance, the fascia, doors and centre console reflect the warmth of burr elm veneer. The craftsmanship is continued in the wealth of grain-matched hide extending over the seat, centre console

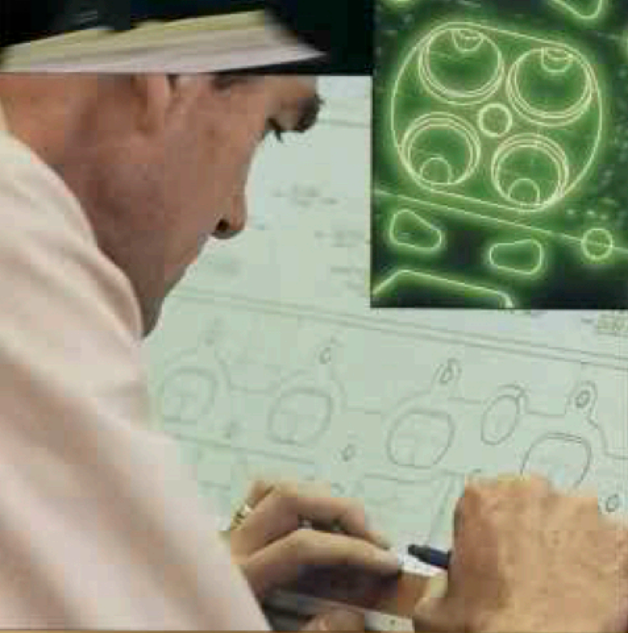
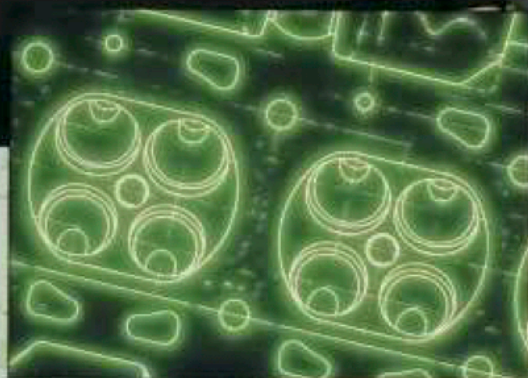
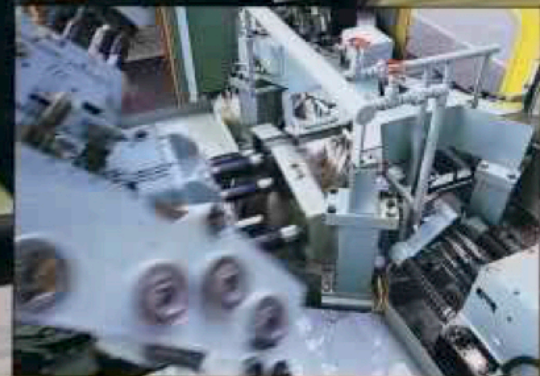
JAGUAR XJ-S H.E. 5.3

and door casings. The luxury born of tradition is complemented by sophisticated

equipment to enhance driving ease and pleasure. Door mirrors and windows are electrically operated, and a central locking system secures the doors. A trip computer, optional on the 3.6 models, provides information on average speed and fuel consumption, and also functions as a digital clock. The interior of the XJ-S H.E., comfortably isolated from road and traffic conditions by the most extensive sound insulation, is isolated from exterior temperatures as well: the standard fitment of air-conditioning gives total control of the interior atmosphere at the turn of a knob. There could hardly be a more suitable environment for enjoying the superb sound qualities of the four-speaker stereo radio/cassette system; this unit, featuring the precision of electronic digital tuning, and a noise reduction system, is optional on the XJ-S 3.6 models.







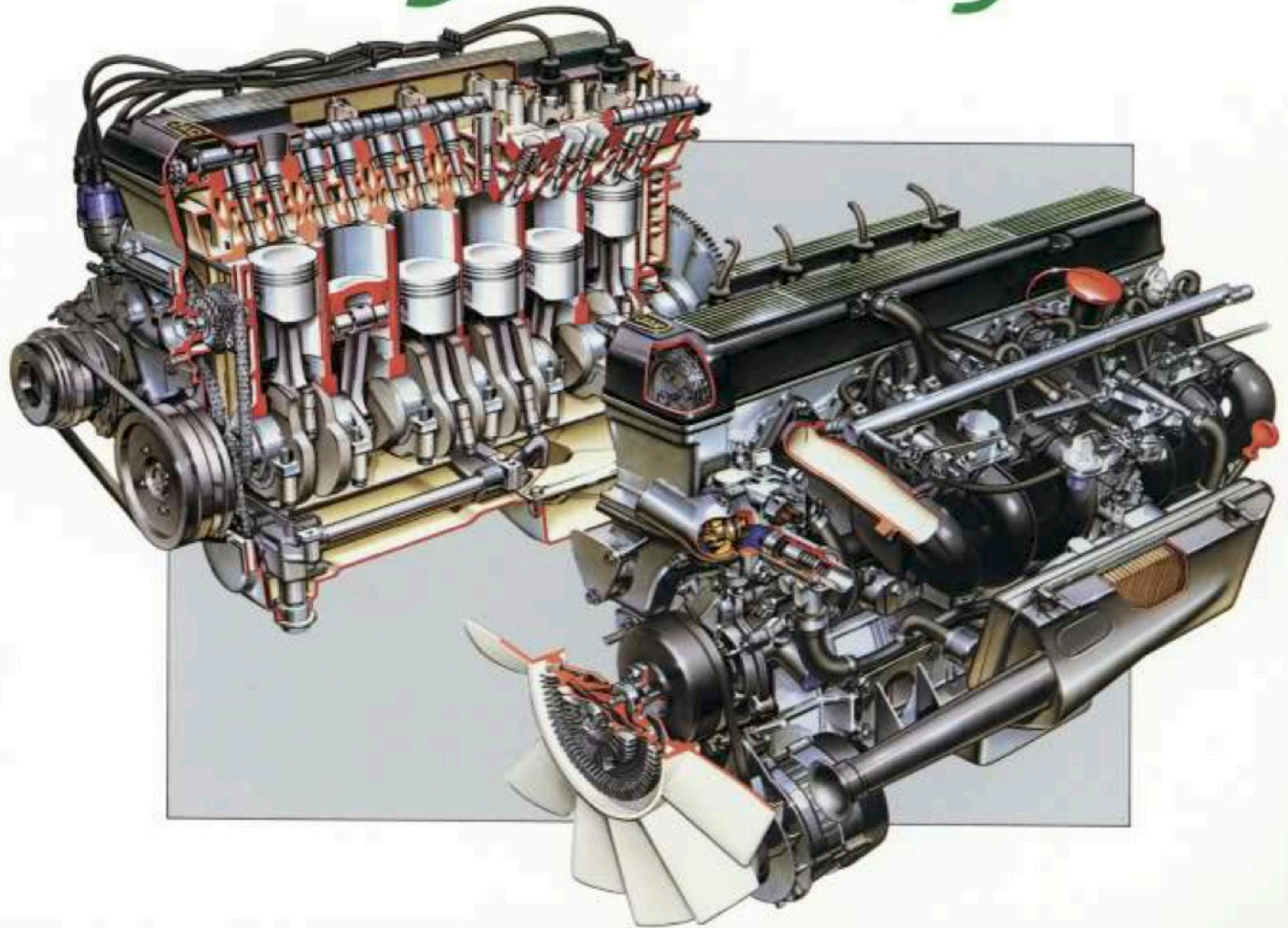
The 3590cc six-cylinder Jaguar engine claims a distinguished engineering pedigree. Evolved from the thirty years of competition and rallying experience which produced the twin cam XK engines and the inimitable V12, this new four-valve power unit combines race-bred combustion efficiency with silken refinement. Using the same advanced Digital Electronic fuel injection system as the V12, and with exceptionally good breathing efficiency at high engine speeds, the 3.6 engine is extremely powerful. Maximum 225bhp, and 240ftlb maximum torque generated at 4000 rpm indicate a potency in the true Jaguar tradition.

The all-aluminium construction of the cylinder head and block give valuable weight-saving and heat-conductive qualities which enhance the performance (and the fuel-saving) capability. Inherent toughness, reliability and refinement are ensured by the rugged construction of the deep-skirted cylinder block, by the use of the V12's immensely strong seven main-bearing crankshaft – and by exhaustive pre-production tests. From the sub-zero temperatures of the Canadian winter to the stifling heat of the Arizona desert, the 3.6 engine was ruthlessly punished. It emerged having demonstrated beyond doubt that it is well worthy of bearing the famous name embellishing the rocker cover.



JAGUAR 360

Six cylinder Engine



JAGUAR XJ-SC 3.6 Cabriolet

Joining the ranks of the world's most desirable open top sports cars, the Jaguar XJ-SC 3.6 Cabriolet surpasses the highest expectations. In its equipment it is every inch an XJ-S, with the starfish alloy wheels emphasising the sporting potential. In its design, elegant styling is teamed with remarkable versatility, with the choice of six roof variations. To the rear of the centre bar, there is a folding, double-skinned hood. In front of the centre bar, the twin, inter-locking targa panels can be removed either singly or together to give a breath of fresh air and sunshine. When the Cabriolet is opened up completely to the elements, the rear quarter windows protect from wind buffeting even at the most rapid cruising speeds.

Headlamp Wash/Wipe system—optional extra.







JAGUAR XJ-SC 3.6

The skillful engineering that has opened up the XJ-S legend to create the Cabriolet has produced a two-seater sports car with the unmistakable hallmarks of quality, luxury and attention to detail. The luggage area behind the front seats, fully carpeted to protect its contents, is fitted with a retaining bar to restrain articles during hard braking or cornering. The luggage area contains two concealed, lockable storage boxes, where more valuable items can be safely stowed out of sight. The fitment of two rear magazine pockets provides tidy stowage for any oddments that will not fit into the centre console cubby box, the door bins or the illuminated lockable glovebox. On long journeys or holidays, the largest suitcases are swallowed up by the deep accommodating boot. A special bag is fitted inside the boot to hold the targa roof panels.

At the controls of the XJ-SC 3.6, the sports-shift gearchange comes readily to hand. Carefully chosen gear ratios allow the driver to make full use of the 3.6 engine's eager responsiveness and broad power band; the high fifth ratio, giving leisurely high speed cruising, is easily selected by a movement to the right and up. The instrumentation, with its battery of warning lamps and detailed monitoring systems, is as comprehensive as that of the V12 H.E. In keeping with the levels of refinement expected of a Jaguar XJ-S, central locking, electric window operation and a high quality stereo radio/cassette player are standard equipment. And for the days when the weather imposes closed-top motoring, the air-conditioning system provides a fresh, controlled atmosphere, scented only by the leather trim upholstery of the Cabriolet's opulent interior.

Trip Computer and Electronic Stereo Radio/Cassette — optional extras.



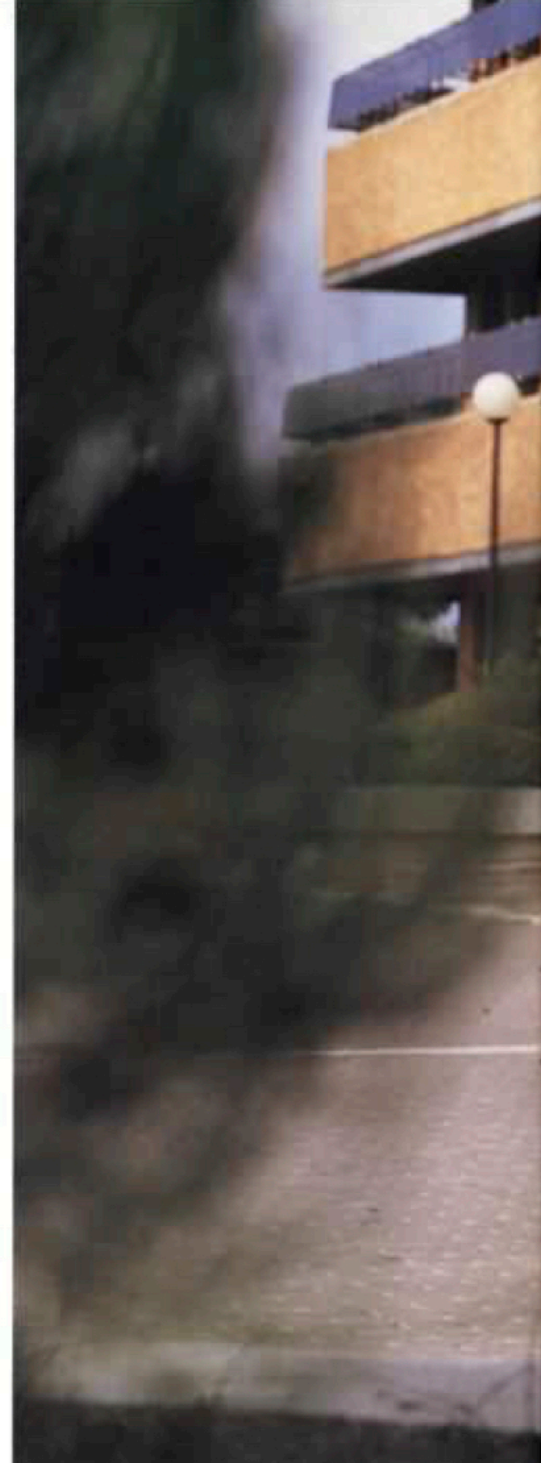


JAGUAR XJ-S 3.6 Coupé



The striking profile of the XJ-S 3.6 Coupé is immediately apparent, accentuated by the slightly raised bonnet line that accommodates the deep-skirted 3.6 litre engine. The perforated alloy wheels, braked by all round discs, add a special emphasis to the Coupé's dynamic styling. The extensive equipment caters both for high speed safety and for comfort in the XJ-S tradition. Tinted glass protects from heat and glare, and the Cibie biode halogen headlamps cut a clear path into night or poor weather conditions. The laminated windscreen is cleared by an electric power wash, two-speed wipers and both flick and intermittent wipe to cope efficiently with drizzle and road spray. The power of the 3.6 litre engine is tempered by rack and pinion steering and fully independent suspension, with a front anti-roll bar and anti-dive geometry to shrug off the most ambitious cornering and braking.

Headlamp Wash/Wipe system—optional extra.







JAGUAR XJ-S 3.6

Inside the 3.6 Coupé the elegance of burr elm adorning the fascia, doors and centre console leaves no doubt that this is the interior of a Jaguar XJ-S. The carefully contoured front seats, with leather seat facings, give wraparound security and comfort, with the safety feature of head restraints. Stowage space is generous, with oddment space in the centre armrest cubby, door bins and glovebox. A stereo radio/cassette player is combined with four speakers and an electrically operated aerial. Air-conditioning sweetens the atmosphere and provides total control of the interior temperature.

The luxuries offered to the occupants of the XJ-S 3.6 Coupé are matched by high levels of equipment. The twin door mirrors and the windows can be adjusted electrically at the touch of a

switch. Central door locking is also a standard feature. The

instrumentation, with night time illumination that the driver can adjust to a suitable level, is both comprehensive and beautifully clear. The bank of warning lamps gives immediate feedback on all major electrical and mechanical functions, from alerting the driver if a bulb fails, to giving a reminder if the fuel drops too low in the capacious 20 gallon tank. The heated rear window incorporates its own inbuilt precaution, with an automatic timer switching off the element after 15 minutes to prevent a drain on battery power. All major switches and controls, including the air-conditioning system, are illuminated for easy use during night driving. A tachometer allows the driver to monitor the 3.6 engine's lively response to throttle and gear change.

Trip Computer and Electronic Stereo Radio/Cassette — optional extras.





Born and bred from the proudest racing pedigree, the XJ-S V12 is carrying Jaguar back to its rightful position at the head of the field. The truly remarkable development potential of the V12 engine has allowed the 295bhp to be raised to a near 400bhp, controlled through

Supercat

a resilient five speed manual gearbox, and braked by massive 13 inch discs. The result is searing performance with which the Jaguar Supercats have stormed past their rivals to win the 1984 European Touring Car Driver's Championship.



Jaguar XJ-S 3.6
Jaguar XJ-SC 3.6
Jaguar XJ-S H.E.

AJ 3.6 litre, 5 speed manual
AJ 3.6 litre, 5 speed manual
HE 5.3 litre, 3 speed
automatic

Specification

ENGINES

AJ 3.6: In-line six cylinder water cooled engine inclined at an angle of 15°. Aluminium alloy cylinder head, twin overhead camshafts, four valves per cylinder, pent roof combustion chambers, Aluminium alloy block, crankshaft running in seven main bearings, dry liners, aluminium alloy pistons, Lucas-Bosch Digital Electronic fuel injection system. Constant energy contactless electronic ignition system.

HE 5.3: 60° Vee-twelve cylinder water cooled engine. Aluminium alloy cylinder heads, one overhead camshaft per bank. High Efficiency combustion chambers, 'Open-deck' aluminium block, crankshaft running in seven main bearings, wet liners, aluminium alloy pistons, Lucas-Bosch Digital Electronic fuel injection system. Constant energy contactless electronic ignition system.

	AJ 3.6		HE 5.3	
Bore (mm)	91		90	
Stroke (mm)	92		70	
Displacement cc	3590		5345	
Compression	9.6:1		12.5:1	
Maximum power (DIN)	225bhp (168kW)		295bhp (217kW)	
@ rpm	5300		5500	
Maximum torque (DIN)	240ftlb (325 Nm)		320ftlb (433 Nm)	
@ rpm	4000		3250	

TRANSMISSIONS

5 speed manual: Synchromesh on all gears.

Ratios: I 3.573 II 2.056 III 1.39 IV 1.0 V 0.76 R 3.463

Final drive ratio: 3.54:1

*Power-Lok® limited slip differential.

3 speed automatic: Torque converter.

Ratios: I 2.50 II 1.50 III 1.0 R 2.0

Final drive ratio: 2.88:1

*Power-Lok® limited slip differential.

FUEL CONSUMPTION

	Urban	MPg	56mph	75mph
Jaguar XJ-S 3.6 manual	15.7	36.1	29.4	
Jaguar XJ-SC 3.6 manual	15.7	36.1	29.4	
Jaguar XJ-S H.E. automatic	15.6	27.1	22.5	

	Urban	90kph	120kph
Jaguar XJ-S 3.6 manual	18.0	7.8	9.6
Jaguar XJ-SC 3.6 manual	18.0	7.8	9.6
Jaguar XJ-S H.E. automatic	18.1	10.4	12.6

STEERING

Rack and pinion power assisted steering. Energy absorbing column with fore and aft adjustment.

SUSPENSION

Front: Fully independent twin wishbones, coil springs and telescopic dampers. Anti-roll bar. Anti-dive geometry providing longitudinal stability under heavy braking.

Rear: Lower transverse wishbones, driveshafts act as upper link, Radius arms, twin coil springs, telescopic dampers.

BRAKES

Servo-assisted four wheel disc brakes, ventilated at front.

Safety split front and rear hydraulic circuits incorporating fluid loss sensor warning.

Hand operated mechanical parking brake.

WHEELS

XJ-S 3.6: 6JK x 15 'Perforated' cast alloys

XJ-SC 3.6: 6SL x 15 'Starfish' cast alloys

XJ-S H.E.: 6SJ x 15 'Starfish' cast alloys

TYRES

215/70 VR 15 low profile steel belted radials.

DIMENSIONS

Overall length:	187.6in (4764cm)
Overall height:	49.7in (1261cm)
Overall width:	70.6in (1793cm)
Wheelbase:	102.0in (2591cm)
Ground clearance:	5.5in (140cm)

WEIGHTS

Kerb weight XJ-S 3.6:	3660lb (1660kg)
Kerb weight XJ-SC 3.6:	3660lb (1660kg)
Kerb weight XJ-S H.E.:	3870lb (1755kg)

BODY

Two door grand tourer, monocoque construction. Front and rear crumple zones designed to provide progressive deformation and energy absorption under impact. Forward hinged bonnet, interior release. Counter-balanced boot lid. Wrap around protective bumpers. 20 gallon (91 litres) fuel tank.

XJ-SC 3.6: Cabriolet body style. Twin interlocking targa panels forward of fixed centre bar. Rear of the centre bar is a folding double skinned hood, with cover.

GLAZING

Laminated windscreen. Tinted glass. Heated rear window including timer (except XJ-SC 3.6 with hood fitted). Electric door window operation.

LOCKING

Central locking system, operated from either door. Security key provided. Anti-burst catches. Fuel filler lock.

MIRRORS

Twin exterior electrically operated door mirrors.

EXTERIOR LIGHTING

Styled quartz halogen headlamps, incorporating side lamps. Twin tail, brake, reversing and rear fog guard lamps. Door open warning lamps.

XJ-S H.E.: Headlamp wash/wipe (optional XJ-S 3.6 and XJ-SC 3.6).

INSTRUMENTS/ELECTRICS

Comprehensive instrumentation, incorporating speedometer, tachometer, voltmeter, oil pressure, fuel and water temperature gauges. Warning lamps monitor ignition, oil pressure, brake system, parking brake, coolant, fuel, battery, main beam, direction indicators, hazard warning, rear fog guard lamps, bulb failure, heated rear window and front seat belts. Major and secondary fault warning lamps. Twin column mounted stalks operate direction indicators, main beam, 2 speed wipers, intermittent wipers and flick wiper and electric screen wash. Master lighting switch. Infinitely variable fascia illumination. Separate switches operate hazard warning flashers, heated rear window, map and courtesy lamps. Horn operated from steering wheel centre pad. Clock. Twin fascia mounted map reading lamps. Courtesy lamps. Cigar lighter.

XJ-S H.E.: Trip computer (optional XJ-S 3.6 and XJ-SC 3.6) and cruise control system. 12v battery.

HEATING AND VENTILATION

Fully integrated and automatic air conditioning system.

RADIO EQUIPMENT

XJ-S 3.6 and XJ-SC 3.6: MW/LW/FM stereo radio/cassette unit incorporating auto reverse.

XJ-S H.E.: Electronic digital tuning MW/LW/FM stereo radio/cassette unit incorporating auto reverse and noise reduction (optional XJ-S 3.6 and XJ-SC 3.6).

Rear speaker system. Electric aerial.

FITTINGS AND SEATS

Impact absorbing fascia finished in burr elm veneer. Leather bound steering wheel. Centre console and door casings finished in padded colour-keyed trim and incorporating armrests. Burr elm door filets. Deep pile carpeting. Cloth headlining. Driver and front passenger sunvisors. Anti-dazzle rear view mirror. Vanity mirror in glovebox. Ashtrays.

Sports styled front seats anatomically designed with longitudinal and recline adjustment. Head restraints. Individually styled rear seats (except XJ-SC 3.6).

XJ-S 3.6: Leather seat facings.

XJ-SC 3.6 and XJ-S H.E.: Full leather upholstery to seats, console, and door casings.

Inertia reel front seats belts. (Rear seat belts optional XJ-S 3.6 and XJ-S H.E.).

INTERIOR STOWAGE

Illuminated and lockable glovebox. Concealed storage box within console. Door bins. Rear parcel shelf.

XJ-SC 3.6: Twin concealed storage boxes located within rear stowage area. Positive luggage restraint. Magazine pockets.

LUGGAGE COMPARTMENTS

Fully trimmed and illuminated. Spare wheel stowed vertically against bulkhead. Comprehensive tool kit in attache case.

IMPORTANT NOTICE

Jaguar Cars Ltd. is constantly seeking ways to improve the specification, design and production of its vehicles and alterations take place continually. Whilst every effort is made to produce up to date literature, this brochure should not be regarded as an infallible guide to current specification, nor does it constitute an offer for the sale of any particular vehicle. Distributors and dealers are not agents of Jaguar Ltd. and have absolutely no authority to bind Jaguar Cars Ltd. by any express or implied undertaking or representation.



JAGUAR

The Legend Grows

