

LS



2013 LEXUS

 **LEXUS**
THE PURSUIT OF PERFECTION.

THE PURSUIT OF PERFECTION.

It is a philosophy that extends well beyond the confines of meticulously assembled sheet metal. An approach to the automobile not as a machine, but rather, an art form. Every curve, deliberate. Every detail, inspired. And where every aspect of the ownership experience is intended to be as rewarding and accommodating as the vehicles themselves. Because while there are certainly easier ways to build an automobile, pursuing perfection is the only way to create a Lexus.

With outstanding craftsmanship and innovation in every 2013 LS, you can experience the comfort of owning a true luxury vehicle, and enjoy all of life's perfect moments.



the new 2013
LS



A definitive new look for
THE DEFINITIVE LUXURY SEDAN.



LS 460 and LS 460 L

The look of the Lexus flagship may have changed, but its uncompromising commitment to world-class luxury remains the same. The new bold exterior styling is highlighted by dramatic body lines – from the new front grille to the flowing look evoking forward momentum. A more rigid platform helps deliver enhanced agility and responsiveness, and the available Climate Concierge and Advanced Pre-Collision System²⁵ offer comfort and peace of mind on an unprecedented scale.



INTRODUCING THE NEW LS SERIES

Generations of the LS have inspired an entire industry through visionary innovation, craftsmanship and design. And now our flagship has a new face. Invigorating new styling announces the presence of the 2013 LS like never before. New innovations make this the most technologically advanced Lexus ever. The all-new F SPORT model opens up a world of intense performance, expanding the world of possibilities – and expanding the pursuit it began decades ago.

THE ALL-NEW LS 460 F SPORT

Daring and unreserved, the all-new LS F SPORT is the next level of exhilaration. We dialed it up with paddle shifters, a sport-tuned suspension and Brembo® brakes for starters. Then we gave it its own unique exterior styling and premium leather front sport seats to maximize the intensity.

THE LS 600h L

The LS Hybrid certainly defies convention, but not logic. The world's first prestige luxury hybrid has never rested on its laurels, instead choosing to push the bar higher. Its intelligent 438-hp^{11,12} Lexus Hybrid Drive delivers efficient power that is uncompromisingly thrilling.



LS 460 F SPORT

When passion runs this deep, the only choice is to follow where it leads. The all-new LS F SPORT is engineered to drive your hunger for exhilarating performance even further. On rear-wheel drive models, its exclusive torque-sensing limited-slip rear differential automatically and instantly distributes power to the right and left wheels to help improve traction and stability during cornering, without interrupting power output. Downshift rev-matching allows for more precise shifting. And aggressive styling cues are exclusive to F SPORT, including a signature grille, genuine aluminum interior trim high performance Brembo® brakes and strong yet light 19-inch forged alloy wheels.

LET YOUR IMPULSES DRIVE.



DRIVE MODE SELECT

Optimize the vehicle systems in your LS to match your driving mood. Select from a number of modes, including COMFORT mode which provides a smoother ride, and SPORT S+ mode that pushes the engine, transmission, suspension and steering systems to deliver maximum acceleration and responsiveness.





A BOLD STATEMENT down to the smallest stitch.



F SPORT EXCLUSIVE STYLING

Exhilaration isn't solely delivered by what's under the hood. The F SPORT front seats are tightly bolstered to help keep you in place during hard cornering. Paddle shifters give you greater control over the transmission. And meticulously crafted touches – from the white and grey stitching to the aluminum interior trim and pedals – elevate the dynamic interior. The F SPORT logo is embossed in both front headrests in a way that speaks boldly and elegantly.



LS 460/LS 460 L

Since its inception, the LS has never been shy about making waves. Now, starting with a more dynamic exterior highlighted by the new spindle grille, the LS promises something even greater – a promise fulfilled by all the innovation, exhilaration and thoughtful design you'd expect from an industry leader. The 4.6-litre, 386-hp¹¹ V8 engine pairs with an eight-speed automatic transmission on a more agile platform to deliver an invigorating blend of acceleration, seamless shifting, control and fuel efficiency.

A COMMANDING PRESENCE.
More seen, and more truly felt.



ALL LED LAMPS

The new LS is the first Lexus to offer energy-efficient LEDs for all exterior lamps, including available headlamps, foglamps, rear combination lamps – even the puddle lamps under the side mirrors.





INNOVATIVE. INTELLIGENT. INVITING. IN EVERY DETAIL.

From intuitive technologies that connect you to your destination to purposeful details that connect you to your immediate environment, the new LS is filled with equal parts style and smarts. The instrument panel and centre console have been redesigned to have more dimension, evoking a sense of space, sophistication and easy functionality. The focal point is the wide 12.3-inch split-screen high-resolution multimedia display, making it easier than ever to use technologies such as the standard Navigation System¹.



EXCLUSIVE WOOD TRIM

Unlike anything else in the world, the stunning design of the available Shimamoku Espresso steering wheel and matching trim combines the organic feel of natural wood with a layered look that evokes modern art. The result of 67 steps of craftsmanship in 38 days, the wheel is formed from many layers of thinly cut wood, bonded together and meticulously shaped and buffed to align with the look of the wood on the instrument panel.





INDULGE YOUR SENSES. EXCEED YOUR EXPECTATIONS.

As you approach your LS, the Advanced Illumination System begins an elegant sequence of soft, warm lights – from the puddle lamps outside down to the GPS-linked clock inside – to welcome you into the vehicle. At the push of the start button, the available Climate Concierge automatically monitors the temperature of four separate climate zones and adjusts not just the fans, but also the temperature of the seats and steering wheel individually so that each zone achieves its pre-set level of comfort as quickly as possible.



EXECUTIVE-CLASS SEATING PACKAGE

To help you make the most of the long wheelbase on the LS 460 L and LS 600h L, this available package includes a right-rear seat that has power-reclining capability and includes amenities such as a built-in ottoman-style leg rest and an indulgent Shiatsu massager.



MARK LEVINSON® REFERENCE SURROUND SOUND AUDIO SYSTEM

Engineers and technicians spent over 2,000 hours tuning this available Mark Levinson®³ 19-speaker, 450-watt⁴ system so that the sound quality in the LS would rival the finest concert halls.



THE HYBRID THAT FEELS

nothing like one.



GENERATIONS OF HYBRID LEADERSHIP.

With 438 total system horsepower,^{11,12} it's no wonder the LS 600h L is a leader among luxury hybrids. After all, from launch it was the world's first prestige luxury and AWD V8 hybrid, and it hasn't slowed since. At Lexus, we have six generations of hybrid technology behind us, which means we are uniquely qualified and completely committed to creating the most advanced hybrid vehicles in the world. This is why the LS 600h L can pair a 5.0-litre V8 gasoline engine with cutting-edge hybrid technology to deliver smooth, seamless power you wouldn't expect.





BRILLIANCE

always looks ahead.

The Vehicle Dynamics Integrated Management (VDIM) system¹⁴ can predict and take steps to help prevent a skid even before it occurs by using a combination of individual-wheel braking, torque modulation and steering torque assistance. The available Driver Attention Monitor²⁴ is designed to detect if you are not looking forward and will signal an alert if it detects an object ahead. And available Lane Keep Assist²³ is engineered to use a camera to monitor visible lane markings, warning you if you are drifting and then taking corrective measures to help steer you back into the lane.



ADVANCED PRE-COLLISION SYSTEM

The available Advanced Pre-Collision System (PCS)²⁵ is engineered to detect an imminent frontal collision and, while retracting the front seatbelts, automatically prepares Brake Assist¹⁵ to help provide increased braking pressure the moment you step on the brake pedal.

BLIND SPOT MONITOR WITH REAR CROSS-TRAFFIC ALERT

Even at low speeds such as in traffic jams, the available Blind Spot Monitor (BSM)²⁷ is designed to alert you if it detects vehicles in your blind spots. And when you're backing out of a parking spot, the new Rear Cross-Traffic Alert (RCTA)³⁰ is designed to notify you of approaching vehicles that might be out of camera view.

THE DEALERSHIP EXPERIENCE

When you visit one of our dealerships, make yourself at home by helping yourself to a beverage and internet access.[†] When picking up your new Lexus, our associates will make the transition seamless. We can help you with everything from setting your favourite radio stations to connecting and transferring your compatible cell phone's contacts to the available Bluetooth[®] system on your vehicle. Rest assured your car will experience the finest treatment as well, with a complimentary car wash with every service.

CLUB LEXUS

A complimentary Club Lexus membership is offered to all new, pre-owned or leased Lexus owners. Club Lexus provides an exceptional compilation of services, offers, special events, and pertinent information that's of interest to Lexus drivers. You can also view your service history, the status of your factory warranty or Extra Care Protection (ECP) coverage, and the current status of your Lexus Financial Services (LFS) loan or lease. Sign up today and start taking advantage of all of the features at www.clublexus.ca.

Lexus LIFESTYLE COLLECTION

Enhance your ownership experience even further with the "The Lexus Lifestyle Collection" Catalogue. Every year, Lexus assembles a wide range of brand name products that exemplify the finest design and craftsmanship in the world, which include designer luggage, Lexus apparel, stunning watches, Royal Doulton Glassware and much more. An exceptional item can be found for every driver.

To learn more about the various exclusive services that Lexus offers, please visit www.lexus.ca.

SERVICE COMMITMENT

On top of enjoying the highest quality product, Lexus also delivers through a professional Dealer network, a unique and uncompromising level of after-sales service: First Class Service Concept. The highest level of professionalism and vehicle support ensure that the Lexus ownership experience is as luxurious as the vehicles.

MAINTENANCE

We offer the first two scheduled maintenance services at no charge to you. The first service at 1,600 km will include a thorough vehicle inspection and a road test. The second inspection at 8,000 km will include a change of engine oil and oil filter.

EXTRA CARE PROTECTION

Extend beyond the new vehicle warranty and enhance your peace of mind with Lexus Extra Care Protection.

WARRANTY

Our Lexus Warranty Comprehensive Coverage includes:

- 48 months/80,000 km (includes tires).
- Hybrid-Related Components:
96 months/160,000 km
(applies to battery control module, hybrid vehicle control module, hybrid battery and the inverter/converter).
- Powertrain: 72 months/110,000 km.
- Corrosion Perforation:
72 months/unlimited kilometres.
- Major Emission Control Components:
96 months/130,000 km.

Please see your Lexus Dealer for details.

Lexus will even provide five days of alternate transportation if your vehicle is required to stay at the dealership for an extended period of time due to a warrantable condition.

ROADSIDE ASSISTANCE

As a proud owner of a Lexus vehicle, you won't have to worry about obtaining assistance when mishaps requiring Emergency Roadside Service or Mechanical Breakdown Towing are needed. Throughout Canada and the continental U.S., our Central Emergency Roadside Services Operator will always be there to ensure you receive prompt, efficient services from one of the many facilities qualified under our approved Roadside Assistance Program. Twenty-four hours a day, 365 days a year, we will be there to help.

[†]Internet is available in most Lexus locations.

EXTERIOR COLOURS



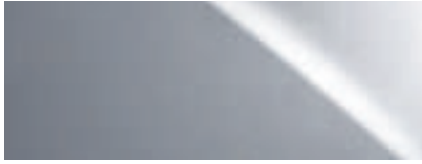
0077
STARFIRE PEARL



0083
ULTRA WHITE



01H9
NEBULA GREY PEARL



01J2
LIQUID PLATINUM



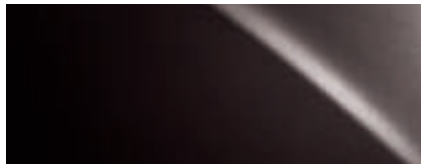
0212
OBSIDIAN



0217
STARLIGHT BLACK MICA



03R1
MATADOR RED MICA



04V3
FIRE AGATE PEARL

INTERIOR COLOURS



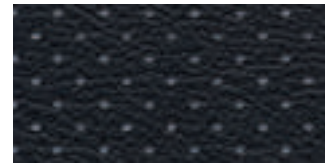
PARCHMENT LEATHER



BLACK LEATHER



SADDLE TAN/BLACK LEATHER



BLACK LEATHER
with WHITE PERFORATIONS

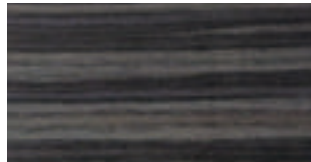
INTERIOR TRIM



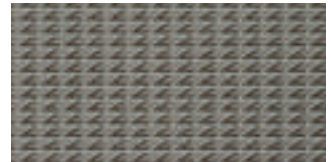
DARK BROWN WALNUT



MATTE DARK BROWN
ASH BURL



SHIMAMOKU ESPRESSO



GENUINE ALUMINUM

COLOUR AVAILABILITY

	STARFIRE PEARL	ULTRA WHITE	NEBULA GREY PEARL	LIQUID PLATINUM	OBSIDIAN	STARLIGHT BLACK MICA	MATADOR RED MICA	FIRE AGATE PEARL	DARK BROWN WALNUT	MATTE DARK BROWN ASH BURL	SHIMAMOKU ESPRESSO	GENUINE ALUMINUM
PARCHMENT LEATHER	●				■●			■●	■●			
BLACK LEATHER	■●		■●	■●	■●						■●	
SADDLE TAN/BLACK LEATHER	●		■●	■●	■●		■	■		■●		
BLACK LEATHER WITH WHITE PERFORATIONS		■	■		■	■	■					■
INTERIOR COLOUR	■ LS 460 MODELS			● LS 600hL			EXTERIOR COLOUR					
									INTERIOR TRIM			

Visit our Web site and try on a colour. lexus.ca

F SPORT Package interiors are available exclusively with Black leather with White perforations and genuine aluminum.

Colours and interiors are subject to change during model year. Please see your Lexus Dealer for details.

GENERAL

TYPE	Five-passenger luxury sport sedan (LS 460) Five-passenger premium hybrid luxury sedan (LS 600h L)
CONSTRUCTION	Welded-steel unibody
CURB WEIGHT	1,920 kg/4,233 lb (LS 460 RWD) 1,940 kg/4,277 lb (LS 460 AWD) 1,980 kg/4,365 lb (LS 460 L) 2,370 kg/5,255 lb (LS 600h L)

DRIVETRAIN

DRIVE WHEELS	Rear-wheel drive (LS 460 RWD) Rear-wheel drive (RWD) with TORSEN ^{®21} limited-slip centre differential (LS F SPORT RWD) Full-time all-wheel drive (AWD) with TORSEN ^{®21} limited-slip centre differential (LS 460 AWD, LS 460 L, LS F SPORT AWD, LS 600h L) Vehicle Stability Control (VSC), ¹⁴ Traction Control (TRAC), Vehicle Dynamics Integrated Management (VDIM) ¹⁴
TRANSMISSION	Eight-speed sequential-shift automatic Electronically Controlled Transmission with intelligence (ECT-i) (LS 460 RWD, LS 460 AWD, LS 460 L) Paddle shifters (LS F SPORT) Electronically controlled Continuously Variable Transmission (ECVT) with snow mode (LS 600h L)

PERFORMANCE

TOP TRACK SPEED	210 km/h ¹¹ (electronically limited)
FUEL ECONOMY ESTIMATES	12.9/8.2/10.8 L/100 km 22/34/26 mpg ¹³ (city/highway/combined) 13.5/8.7/11.3 L/100 km 21/32/25 mpg ¹³ (LS 460 AWD, LS 460 L) 10.6/9.1/9.9 L/100 km 27/31/29 mpg ¹³ (LS 600h L)
AERODYNAMIC DRAG COEFFICIENT	0.26 (LS 460, LS 460 L) 0.27 (LS 600h L)
TURNING CIRCLE	10.8 m/35.4 ft (LS 460 RWD) 11.4 m/37.4 ft (LS 460 AWD) 11.8 m/38.7 ft (LS 460 L) 12.0 m/39.4 ft (LS 600h L)

CHASSIS

SUSPENSION	Front: Independent upper and lower multi-link double-joint suspension arms with stabilizer bar Rear: Independent multi-link suspension with stabilizer bar Height-adjustable Adaptive Variable Air Suspension (AVS) (LS 460 AWD Technology Package, LS 460 L, LS 600h L) Height-adjustable Adaptive Variable Air Suspension (AVS) F SPORT-tuned and lowered (LS F SPORT)
STEERING	Electronic Power Steering (EPS) system, progressive power-assisted rack-and-pinion (LS 460) Variable Gear-Ratio Steering (VGRS) (LS 600h L, optional on LS 460 L and LS 460)
BRAKES	Four-wheel power-assisted disc brakes with Electronic Controlled Braking (ECB), four-sensor, four-channel Anti-lock Brake System (ABS), Electronic Brake-force Distribution (EBD), Brake Assist (BA), ¹⁵ and Electric Parking Brake (EPB) Regenerative braking function (LS 600h L) 13.1-inch ventilated front, 12.3-inch ventilated rear discs (LS 460 RWD) 14.0-inch ventilated front, 13.1-inch ventilated rear discs (LS 460 AWD, LS 460 L, LS 600h L) 14.8-inch ventilated front discs with Brembo [®] opposed six-piston calipers, 13.1-inch ventilated rear discs (LS F SPORT)
WHEELS AND TIRES	19-inch multi-spoke alloy wheels with P245/45R19 all-season tires (LS 460) 19-inch split-7-spoke alloy wheels with P245/45R19 all-season tires (LS 460 L, LS 600h L) <i>Optional:</i> 19-inch split-10-spoke alloy wheels with P245/45R19 performance summer tires (LS F SPORT)

ENGINE

LS 460 and LS 460 L

TYPE	90° V8, aluminum block and heads, direct and port fuel injection
DISPLACEMENT	4.6 litres
VALVETRAIN	Four cam, four valves per cylinder, with Dual Variable Valve Timing with intelligence and Electronic intake valve timing (Dual VVT-iE)
COMPRESSION RATIO	11.8:1
HORSEPOWER AT RPM	386 hp @ 6,400 (LS 460 RWD) ¹¹ 360 hp @ 6,400 (LS 460 AWD, LS 460 L) ¹¹
TORQUE AT RPM	367 lb-ft @ 4,100 (LS 460 RWD) ¹¹ 347 lb-ft @ 4,100 (LS 460 AWD, LS 460 L) ¹¹
EMISSION RATING	Tier 2 Bin 5 Emissions Rating

LS 600h L

TYPE	90° V8, aluminum block and heads, direct and port fuel injection
DISPLACEMENT	5.0 litres
VALVETRAIN	Four cam, four valves per cylinder, with Dual Variable Valve Timing with intelligence and Electronic intake valve timing (Dual VVT-iE)
COMPRESSION RATIO	11.8:1
ELECTRIC-DRIVE MOTOR	High-output, permanent-magnet, electric motor with EV mode
TOTAL SYSTEM HORSEPOWER	438 hp ^{11,12}
EMISSION RATING	Tier 2 Bin 3 Emissions Rating

WHEELS



19-inch multi-spoke alloy wheels
STANDARD
LS 460



19-inch split-7-spoke alloy wheels
STANDARD
LS 460 L and LS 600h L



19-inch split-10-spoke alloy wheels
AVAILABLE
LS F SPORT

BODY AND DIMENSIONS

HEIGHT

1,465 mm/57.7 in (LS 460 L)
1,475 mm/58.1 in (LS 460)
1,480 mm/58.3 in (LS 600h L)



WIDTH 1,875 mm/73.8 in

LS 460



WHEELBASE 2,970 mm/116.9 in

OVERALL LENGTH 5,090 mm/200.0 in

LS 460 L and LS 600h L



WHEELBASE 3,090 mm/121.7 in

OVERALL LENGTH 5,210 mm/205.0 in

HEADROOM

front/rear
965/964 mm - 38.0/38.0 in

LEGROOM

front/rear
1,110/909 mm - 43.7/35.8 in (LS 460)
1,110/933 mm - 43.7/36.7 in (LS 460 L, LS 600h L)

SHOULDER ROOM

front/rear
1,487/1,446 mm - 58.5/56.9 in (LS 460)
1,487/1,432 mm - 58.5/56.4 in (LS 460 L, LS 600h L)

TRUNK CAPACITY

510 litres/18.0 cubic feet (LS 460, LS 460 L)
370 litres/13.0 cubic feet (LS 600h L)

FUEL-TANK CAPACITY

84 litres/18.5 gallons

STANDARD LUXURY FEATURES

LUXURY AND CONVENIENCE

- SmartAccess¹⁹ with push-button Start/Stop
- Dual-zone automatic climate control with interior air filter, smog sensor and automatic recirculation mode (LS 460 RWD, LS 460 AWD)
- Four-zone automatic climate control (LS 460 L, LS 600h L)
- Lexus Memory System with three settings to control power driver's seat (except lumbar), outside mirrors and steering wheel
- Power windows and tilt-and-slide moonroof with one-touch open/close
- Remote-linked window/moonroof opening and closing
- Electrochromic (auto-dimming) inside rearview mirror and outside mirrors
- Power door locks
- Hybrid blue accented front headlamps, rear tail lamps, logos and badges (LS 600h L)
- Cruise control (LS 460 RWD, LS 460 AWD)
- Dynamic Radar Cruise Control²² (LS 460 L, LS 600h L)
- Power door closers and power trunk open/close (LS 460 L, LS 600h L)
- HomeLink^{®28} universal transceiver to operate compatible garage, gate, home lighting and home security systems
- Lexus Personalized Settings (LPS) to customize select electronic functions
- Power rear window sunshade
- Power rear-door sunshade (LS 600h L)
- Advanced Parking Guidance System (APGS) (LS 600h L)
- Wood and leather console box (LS 460 L)

SEATING AND TRIM

- Wood grain interior trim
- Premium leather seats surfaces
- Escaine roof headliner (LS 600h L)
- Leather-trimmed interior
- NuLuxe door trim (LS 460, LS 460 L)
- Heated wood- and leather-trimmed steering wheel (leather-trimmed on LS 460 F SPORT)
- Power tilt-and-telescopic steering wheel with automatic tilt-away
- Wood-trimmed shift knob with leather (LS 460, LS 460 L)
- Wood-trimmed shift knob with chrome (LS 600h L)
- 16-way driver's (including dual-function lumbar) with auto slide-away and 12-way front passenger's (including lumbar) power seats
- Climate control front seats with heat and air conditioning
- Heated rear seats (LS 460)
- Power rear seats (LS 460 L, LS 600h L)
- Climate control rear seats with heat and air conditioning (LS 460 L, LS 600h L)
- Rear-seat massage settings (LS 460 L)
- Height-adjustable headrests for all seats

AUDIO, COMMUNICATION AND INSTRUMENTATION

- Navigation System¹ with 12.3-inch high-resolution multimedia display with integrated backup camera² and enhanced Bluetooth[®] capability⁷
- Lexus 10-speaker, Premium Surround Sound System with Automatic Sound Levelizer (ASL) and DVD/CD player (LS 460)
- Mark Levinson[®] 19-speaker, 450-watt⁴ Reference Surround Sound Audio System³ with 7.1-channel architecture and DVD/CD player (LS 460 L, LS 600h L)
- Remote touch interface
- Satellite roof-mounted fin antenna
- Integrated XM[®] Satellite Radio⁵
- USB and auxiliary iPod^{®6}/MP3/Windows Media Audio (WMA) port
- Drive Mode Select
- Intuitive Parking Assist
- Steering-wheel-mounted audio controls
- Electronic Thin Film Transistor (TFT) multi-information display
- Electroluminescent instrumentation

STANDARD SAFETY AND SECURITY FEATURES

ACTIVE SAFETY

- Four-wheel ventilated power-assisted disc brakes
- Electronic Controlled Braking (ECB)
- Four-sensor, four-channel Anti-lock Brake System (ABS)
- Brake Assist (BA)¹⁵
- Electronic Brake-force Distribution (EBD)
- Vehicle Dynamics Integrated Management (VDIM)¹⁴
- Vehicle Stability Control (VSC)¹⁴
- Traction Control (TRAC)
- Smart Stop Technology²⁰
- Pre-Collision System (PCS)¹⁶ (LS 460 L)
- Advanced Pre-Collision System (PCS)²⁵ (LS 600h L)
- Clearance and backup sensors
- Active Pedestrian Detection System²⁶ (LS 600h L)
- Lane Keep Assist System²³ (LS 600h L)
- Driver Attention Monitor²⁴ (LS 600h L)
- Blind Spot Monitor System (BSM)²⁷ with
- Rear Cross-Traffic Alert (RCTA)³⁰ (LS 460 L, LS 600h L)
- Direct Tire Pressure Monitor System¹⁷
- Laminated side glass and water-repellent front-door glass
- Rain-sensing intermittent windshield wipers with mist cycle
- Rear-window defroster with auto-off timer
- Bi-Xenon High Intensity Discharge (HID) headlamps with dynamic auto-levelling (LS 460, LS 460 L)
- LED headlamps with dynamic auto-levelling (LS 600h L)
- Dual-swivel Adaptive Front Lighting System (AFS) with headlamp washers
- Integrated LED foglamps
- LED rear taillamps and daytime running lights
- Power-adjustable, heated, auto-folding outside mirrors with LED turn indicators, puddle lamps and auto tilt-down in reverse

PASSIVE SAFETY

- Driver's and front passenger's advanced airbag system (SRS)¹⁸ with front passenger's twin-chamber airbag (SRS)¹⁸
- Front seat-mounted side airbags (SRS)¹⁸
- Driver's and front passenger's knee airbags (SRS)¹⁸
- Front and rear side curtain airbags (SRS)¹⁸
- Advanced active front headrests¹⁰
- Three-point seatbelts for all seating positions, pre-tensioners with force limiters for front and outboard rear seats
- Automatic Locking Retractor/Emergency Locking Retractor (ALR/ELR) seatbelts for rear outboard seating positions.
- Emergency Locking Retractor (ELR) only for driver's seat
- Height-adjustable front shoulder belt anchors
- Child Restraint Seat (CRS) tether anchor brackets for rear outboard seating positions
- Highly rigid body structure with front and rear crumple zones
- Side-impact door beams
- Reinforcements in pillars and door sills
- Impact-dissipating upper interior trim
- Collapsible steering column

SECURITY

- Vehicle theft-deterrent and engine-immobilizer system
- Emergency interior trunk release
- Tool kit

OPTION PACKAGES

LS 460RWD/LS 460 AWD

F SPORT PACKAGE

- 19-inch split-10-spoke forged alloy wheels with P245/45R19 performance summer tires
- Aluminum dash accents
- F SPORT shift knob
- Aluminum sport pedals with rubber inserts
- F SPORT scuff plates
- Brembo® high friction brake pads, calipers and rotors
- Electric Power Steering (EPS) with Variable Gear Ratio Steering (VGRS)
- Adaptive Variable Air Suspension (AVS)
- Sport-tuned suspension
- Paddle shifters
- Premium F SPORT leather seat surfaces
- Integrated LED foglamps
- Colour full skirt package
- F SPORT grille
- 3-spoke F SPORT steering wheel

LS 460 AWD

TECHNOLOGY PACKAGE

- Mark Levinson® 19-speaker, Reference Surround Sound Audio System³ with DVD/CD player
- Pre-Collision System (PCS)¹⁶
- Dynamic Radar Cruise Control²²
- Blind Spot Monitor System (BSM)²⁷
- Rear Cross-Traffic Alert (RCTA)³⁰
- Electric Power Steering (EPS) with Variable Gear Ratio Steering (VGRS)
- Adaptive Variable Air Suspension (AVS)
- Rear-seat side airbags (SRS)¹⁸
- Power rear seats with power headrests and memory with one memory setting
- Power rear-seat lumbar support, recline and slide
- Climate control rear seats with heat and air conditioning
- Multi-zone automatic climate control
- Rear-seat massage settings
- Rear-seat cool box
- Rear-door sunshades

LS 460L

EXECUTIVE PACKAGE

- Lexus Rear-Seat Entertainment System (RSES) with Blu-ray DVD player,⁹ 9-inch Liquid Crystal Display (LCD) screen
- Two sets of wireless headphones⁸
- Audio and DVD remote control
- Rear audio controls
- Right-rear power reclining seat and retractable ottoman with multifunction Shiatsu massager
- Rear-seat massage settings
- Infrared body temperature sensor
- Ottoman seat cushion airbag (SRS)¹⁸
- Leather covered lower instrument panel and door armrest
- Electric Power Steering (EPS) with Variable Gear Ratio Steering (VGRS)
- Night View²⁹
- Active Pedestrian Detection System²⁶
- Driver Attention Monitor²⁴
- Advanced Pre-Collision System (PCS)²⁵
- Power rear-door sunshades
- Full auto brake
- LED headlamps

LS 600hL

EXECUTIVE PACKAGE

- Lexus Rear-Seat Entertainment System (RSES) with Blu-ray DVD player,⁹ 9-inch Liquid Crystal Display (LCD) screen
- Two sets of wireless headphones⁸
- Audio and DVD remote control
- Rear-seat armrest with accessory power outlet (110 V)
- Leather covered lower instrument panel and door armrest
- Right-rear power reclining seat and retractable ottoman with multifunction Shiatsu massager
- Rear-seat massage settings
- Ottoman seat cushion airbag (SRS)¹⁸
- Night View²⁹

PERSONALIZE YOUR LEXUS

- Block heater
- Cargo net
- Paint Protection Film

THE BEST WAY TO FINANCE YOUR NEW LS – EASILY, QUICKLY, AFFORDABLY.



• Lexus Financial Services does nothing but finance or lease Lexus vehicles; thus, we know financing and we know Lexus. • Our interest rates are fully competitive and our terms flexible (up to 72 months). • Since we offer Web services, you can: A: check out our rate; B: save time by getting credit approved on-line – before checking out the vehicle(s) of your interest. • Finally, one-stop shopping (at all Lexus Dealerships) saves you time. We invite you to visit us at lexus.ca or call us at 1-800-26-LEXUS.

LEXUS CANADA. Every effort has been made to ensure the specifications and equipment shown are accurate based on information available at time of printing. In some cases, certain changes in standard equipment, options or product delays may occur, which would not be reflected in this brochure. Lexus Canada reserves the right to make these changes without notice or obligation. Your Lexus Dealer is the best source for up-to-date information.



Lexus invites you to join us in Club Lexus, a very exceptional compilation of services, offers, special events and pertinent information available only to Lexus owners. To register for Club Lexus, please visit lexus.ca or call 1-800-26-LEXUS.

1. The Navigation System is designed to assist in locating an address or point of interest. Discrepancies may be encountered between the system and your actual location. Road system changes may affect the accuracy of the information provided. Rely on your common sense to decide whether to follow a specified route. Detailed coverage not available for every city or roadway. Periodic updates available at an additional cost. See your Navigation System *Owner's Manual* for further details. Navigational systems in some vehicles are available with bilingual capability, XM NavTraffic® requires a monthly service fee and is designed to provide real-time traffic or alternative routes of travel. NavTraffic will only be available in Montreal, Vancouver and Toronto. Both Montreal and Vancouver will only have incident data and Toronto will have both incident and flow data. 2. The backup camera does not provide a comprehensive view of the rear area of the vehicle. You should also look around outside your vehicle and use your mirrors to confirm rearward clearance. 3. Mark Levinson is a registered trademark of Harmon International Industries Inc. 4. Continuous average power, all channels driven, at less than 0.1% THD; 20-20,000 Hz. 5. Functioning Satellite Radio requires a compatible receiver and monthly service fee. Please see your Lexus Dealer for further details. Reception of satellite signal may vary depending on location. 6. iPod is a registered trademark of Apple Inc. 7. Lexus tests certain Bluetooth® capable phones for compatibility with Lexus vehicles. Please see your Lexus Dealer for details. Note that the recommendation of Lexus is not a warranty of the performance for any phone and that some problems may occur with any type of handset based on the phone software version or the service coverage available in your area. Some vehicles equipped with Bluetooth® technology are available with bilingual capability. 8. Headphones are for passenger use only. Do not use while operating vehicle. 9. A single disc DVD player is standard on vehicles equipped with the dual-screen Rear-Seat Entertainment System. A separate DVD player or game system utilizing the centre console's video/audio inputs is required in order to use the split-screen function. 10. Active headrests can help reduce the extent of whiplash in certain types of rear-end collisions. 11. Ratings achieved using the required premium unleaded gasoline with an octane rating of 91 or higher. 12. Maximum output indicates engine plus HV battery output. 13. FUEL CONSUMPTION RATING. Fuel efficiency estimates were determined using approved Government of Canada Test Methods. Actual fuel consumption will vary based on driving habits and other factors. 14. Vehicle Stability Control (VSC) and if applicable Vehicle Dynamics Integrated Management (VDIM) are electronic systems designed to help the driver maintain vehicle control under adverse conditions. They are not substitutes for safe driving practices. Factors including speed, road conditions and driver steering input can all affect whether VSC and VDIM will be effective in preventing a loss of control. Please see your *Owner's Manual* for further details. 15. Brake Assist is designed to help the driver take full advantage of the benefits of ABS. It is not a substitute for safe driving practices. Braking effectiveness also depends on proper brake-system maintenance and tire and road conditions. 16. The Pre-Collision System is designed to help reduce the crash speed and damage in certain frontal collisions only. It is not a collision-avoidance system and is not a substitute for safe and attentive driving. System effectiveness depends on many factors, such as speed, driver input and road conditions. Please see your *Owner's Manual* for further information. 17. The Lexus Tire Pressure Monitor alerts the driver when tire pressure is critically low. For optimal tire wear and performance, tire pressure should be checked regularly with a gauge; do not rely solely on the monitor system. Please see your *Owner's Manual* for details. 18. All the airbag ("AB") systems are Supplemental Restraint Systems. All ABs (if installed) are designed to inflate only under certain conditions and in certain types of severe collisions: frontal and knee ABs typically inflate in frontal collisions; side and side curtain ABs in side collisions; Roll-Sensing Curtain ABs at a severe tilt degree, roll or lateral G-force. In all other accidents, the ABs will not inflate. To decrease the risk of injury from an inflating AB, always wear seatbelts. Do not use a rearward-facing child seat in any front passenger seat. Please see your *Owner's Manual* for further information/warnings. 19. The SmartAccess system may interfere with some pacemakers or cardiac defibrillators. If you have one of these medical devices, please talk to your doctor to see if you should deactivate this system. 20. Smart Stop Technology operates only in the event of certain simultaneous brake and gas pedal applications. When engaged, the system will reduce engine power to help the brakes to bring the vehicle to a stop. Factors including speed, road conditions, driver input can all impact stopping distance. Smart Stop Technology is not a substitute for safe and attentive driving and does not guarantee instant stopping. Please see your *Owner's Manual* for further details. 21. TORSEN® is a registered trademark of Zexel Torsen, Inc. 22. Dynamic Radar Cruise Control was designed to assist the driver and is not a substitute for safe and attentive driving practices. 23. Lane Keep Assist is designed to read the lane markers of certain roads and apply slight torque to the steering wheel to help keep the car in the centre of the lane. If the vehicle approaches the outer limits of its lane, the Lane Departure Warning feature sounds a warning tone and applies slight torque to the steering wheel to notify the driver that corrective action may be required. These features are not a collision-avoidance system and are not a substitute for safe and attentive driving. System effectiveness depends on many factors. Please see your *Owner's Manual* for further information. 24. The Driver Attention Monitor is designed to alert the driver if a potential hazard is detected ahead and the driver's face appears to be turned away. It is not a collision-avoidance system and is not a substitute for safe and attentive driving. System effectiveness depends on many factors. Please see your *Owner's Manual* for further information. 25. The Advanced Pre-Collision System is designed to help reduce the crash speed and damage in certain frontal collisions only. The included Driver Attention Monitor is designed to alert the driver if a potential hazard is detected ahead and the driver's face appears to be turned away. They are not collision-avoidance systems and are not substitutes for safe and attentive driving. System effectiveness depends on many factors. Please see your *Owner's Manual* for further information. 26. The Active Pedestrian Detection System, part of the Advanced Pre-Collision System, is designed to help reduce the impact speed and damage in certain frontal collisions only. It is not a collision-avoidance system and is not a substitute for safe and attentive driving. System effectiveness depends on many factors, such as speed, driver input and road conditions. Please see your *Owner's Manual* for further information. 27. Do not rely exclusively on the Blind Spot Monitor System to determine if a lane change is safe. Always look over your shoulder and use your turn signal before changing lanes. There are several limitations to the function, detection, range and clarity of the monitor. For a complete list of limitations and directions regarding use of the monitor system, please see your *Owner's Manual*. 28. HomeLink is a registered trademark of Johnson Controls. 29. Night View is designed to alert the driver to objects beyond the projected light of the low-beam headlamps. Driver should only glance at image occasionally. Factors including cold weather and the vehicle's air conditioner may limit the effectiveness of the system. 30. Do not rely exclusively on the Rear Cross-Traffic Alert System. There are limitations to the function, detection and range of the system. You should also look around outside your vehicle, over your shoulder and use your mirrors to confirm rearward clearance. For a complete list of limitations and directions, please see your *Owner's Manual*.

Vehicles in this brochure shown with optional equipment. Some features mentioned and/or shown in this brochure may only be available as part of an optional package.

Under very cold conditions, the operation of some vehicle electronic systems using liquid crystal technology (such as CD, DVD, NAV and Audio displays) may be adversely affected until a warmer interior vehicle temperature is reached.

Lexus reminds you to place small children in CSA-approved car seats - in the rear seats, to always wear your seatbelts, and to drive safely.

