

2011 LACROSSE



| 2011 | BUICK LACROSSE |
THE NEW CLASS OF WORLD CLASS



FOR THE LUXURY SEDAN, IT'S A WHOLE NEW WORLD.

/ 2011 BUICK LACROSSE //

Buick didn't invent the luxury sedan – it simply perfected it. When the all-new Buick LaCrosse was introduced last year, it not only shook up people's perceptions of Buick, but also of the luxury sedan. With a design that *Motor Trend* described as "much more expressive" than Lexus ES 350. With serious performance credentials, highlighted by robust, yet fuel-efficient power – in addition to the latest driver control technologies. And electronics that provide enhanced information, communications and entertainment, including a 40 GB* Navigation System and rear-seat DVD entertainment system. Add to that the honours the 2010 LaCrosse earned as the winner of a Consumers Digest Best Buy Award. It used to be that world-class was used to refer to names like Lexus. But as the *Los Angeles Times* said of the new LaCrosse, "... it blows the Lexus out of the sky. Pow. Parachute. Smoking crater." Meet the New Class of World Class – Buick LaCrosse.

* 30 GB navigation storage, 10 GB music storage with available navigation system.

"Buick sees Lexus on most counts and raises on others... The body sculpting and chrome flourishes are much more expressive than the ES 350's, especially the crisp bow-wake shoulder line and concave lower 'light catcher'... goes down the road with more verve and driver involvement than its Japanese counterpart..."

– Motor Trend



LaCrosse CXS, shown in Quicksilver Metallic with available equipment.



Design philosophy. //

IT HAS AN ANGLE ALL ITS OWN.

The objective of the LaCrosse design process wasn't simply to make a fresh statement about luxury sedan style. The goal was to use design to embody a core philosophy – one that expresses confidence and excellence, without ever crossing the line into overstatement. It's like people who are very comfortable in their own skin – who are without pretence or self-consciousness. You can see that character clearly in LaCrosse's strong, sculpted lines and in its signature waterfall grille and portholes. You can also see another aspect of LaCrosse, if you look closely enough – and that is the microscopically tight-fitting exterior body panels, demonstrating Buick's enduring and meticulous approach to quality. Nothing short of what *Car and Driver* calls "spectacular".

*"... a design that is original,
adventurous, and spectacular."*

– *caranddriver.com*, July 2009

LaCrosse CXS, shown in Quicksilver
Metallic with available equipment.



NOT BUILT OR ASSEMBLED – IT IS CRAFTED.

The real test for an interior isn't just the way it looks – it is the quality of the driving experience. The craftsmanship that defines the LaCrosse interior takes on many different forms. You cannot see the QuietTuning® technologies that reduce, block and absorb noise, but you will appreciate the library-quiet environment they produce. This creates a pervasive sense of peace that places you in an ideal state to examine some of LaCrosse's other qualities, such as the comfort produced by features like the power eight-way driver's seat standard

on all models and the automatic dual-zone climate controls that are standard on all CXL and CXS models. What can be seen very clearly is an exquisite sense of detail with the tone set by the ice blue ambient LED lighting. The craftsmanship also applies to the use of premium materials, such as the available genuine wood inserts on the heated steering wheel and the contrasting French seam stitching on the perforated leather-appointed seating in the CXS. The human touch – it is very much in evidence in LaCrosse.

IT FEELS RIGHT. AND IT SOUNDS EVEN BETTER.

LaCrosse is designed and equipped with the goal of creating the most intuitive form of driving that must be experienced to be fully appreciated. It extends beyond the ergonomic positioning of the controls and their tactile feel. It also includes features that enable you to keep both hands on the steering wheel – and your attention on the road ahead. One example is the standard sound system and Bluetooth® controls mounted on the steering wheel. But LaCrosse's controls do more than satisfy functional requirements. They also inspire – when you hear your favourite music played through the available harman/kardon® 384-Watt 11-speaker premium 5.1 matrix surround sound system. What better way to listen to the available XM Satellite Radio™.* LaCrosse also enhances another form of performance, with tap-up/tap-down Driver Shift Control for the six-speed automatic transmission. Select your gear, select your music – let the performance begin.

* Available in 10 Canadian provinces and the 48 contiguous United States. Subscription sold separately after trial period. Visit xmradio.ca for details.



Hear the difference. //



A

THOUGHTFUL, AS WELL AS ENTERTAINING.

It's about creating a well-rounded driving experience that anticipates your desires and those of your passengers, and then sets about fulfilling them in innovative ways.

A/ LaCrosse CXS, shown above in Titanium with available equipment, including the available touch-screen DVD-based Navigation System.* It features a 40 GB hard drive, with 30 GB dedicated to the Navigation System and 10 GB for music storage.

B/ The available rear-seat DVD entertainment system features two fold-up seatback LCD screens, wireless headphones and a USB port.

C/ The keyless access system allows you to activate the ignition with a push-button start. Standard on LaCrosse CXS.

D/ The standard Bluetooth hands-free wireless connectivity enables you to make, answer and end calls on compatible mobile phones, using steering wheel-mounted controls.

* At time of print, detailed map coverage is available for most major urban areas of the United States and for certain metropolitan areas of Canada (Vancouver, Calgary, Edmonton, Winnipeg, Windsor, London, Toronto, Ottawa, Montreal, Quebec City and Halifax). Coverage is significantly limited outside these areas.



B



C



D



THE PRIORITIES ARE AS WELL-BALANCED AS THE HANDLING.

LaCrosse offers an approach to driving that is in sync with your priorities. That begins with an engine lineup that offers the exceptional fuel efficiency of the 182 horsepower 2.4L ECOTEC® engine that earns a stellar 6.6 L/100 km highway fuel consumption rating.* It was named to the elite ranks of the 2010 Ward's 10 Best Engines and is standard on CX and available on CXL. If performance tops your list, CXL and CXS models feature a 3.6L V6 that generates an authoritative 280 horsepower. Both engines balance power and fuel efficiency by incorporating Direct Injection and Variable Valve Timing (VVT) technology. LaCrosse also includes a host of driver control technologies that help balance stability and handling even in adverse conditions. The Haldex intelligent All-Wheel-Drive (AWD) system on CXL AWD is among the most advanced in the world. And the standard StabiliTrak® electronic stability control system integrates with ABS and intelligent brake assist to keep you on your intended driving line. The exceedingly well-balanced LaCrosse.

*2011 Buick LaCrosse equipped with standard 2.4L ECOTEC I-4 engine. Fuel consumption ratings based on GM testing in accordance with approved Transport Canada test methods. Your actual fuel consumption may vary.



A

INCREASED RESPONSIVENESS, FUEL EFFICIENCY AND TRACTION.

A/ New for 2011, LaCrosse CXS features an innovative front suspension system called HiPer Strut. It enhances ride and handling characteristics by reducing torque steer and minimizing the vehicle's reaction to tire and wheel imbalances. It also provides more communicative steering through improved camber control, while better isolating the vehicle from bumps and rough road surfaces. It combines with the continuously variable real-time damping suspension that is available on CXS, further heightening its connection to the road.



B

B/ The purest expression of LaCrosse's enviable performance is represented by the CXL and CXS models that both feature the 3.6L V6 engine. It produces 280 horsepower, yet its fuel efficiency is equally impressive. That's thanks to Direct Injection that boosts output, while reducing fuel consumption and emissions – in addition to Variable Valve Timing (VVT) that optimizes combustion timing to increase low end torque and increase fuel efficiency.

C/ The Haldex intelligent All-Wheel-Drive (AWD) system on LaCrosse CXL AWD helps optimize traction by distributing power to the wheels with the most grip. In combination with the electronic rear limited-slip differential, the system can distribute up to 80 percent of the engine's torque to the rear wheel with the most traction.



C

A/ OnStar** uses advanced communications technology to enhance your safety, security and convenience. Safety is elevated by the Automatic Crash Response. When OnStar's sensors detect a collision, they automatically alert OnStar requesting help, even if you are

unable to do so. An Advisor then directs emergency help to your exact GPS location. OnStar also adds to your security – if your vehicle is stolen, OnStar's GPS technology can help police locate it. And Turn-by-Turn Navigation elevates your convenience as the simplest and smartest navigation system

available. Just push the OnStar button and tell the Advisor where you want to go, then turn-by-turn directions are downloaded to your vehicle. No one offers more ways to help you on the road. OnStar and six months of the Directions and Connections Plan are included on all LaCrosse models. Learn more at onstar.ca

* Visit onstar.ca for coverage map, details and system limitations. Services vary by model and conditions. OnStar acts as a link to existing emergency providers.



B/ The available Head-Up Display (HUD) instrumentation projects information such as speed, exterior temperature and radio selections on the windshield, so you can maintain your full attention on the road ahead.

C/ No more blind spots. The available Side Blind Zone Alert system employs radar technology to scan an arc on both sides of the vehicle. When another vehicle enters either of these zones, it triggers an LED symbol alert in the appropriate exterior rear-view mirror.



A COMPREHENSIVE VISION OF SAFETY.

In LaCrosse, safety entails much more than a lengthy list of occupant protection features. It also encompasses a series of features that are designed to prevent an incident from occurring, by increasing your ability to see what was previously unseen, starting with a windshield humidity sensor connected with auto defogger activation that's standard on CXL and CXS models. Other visibility features are combined in the aptly named available Driver Confidence Package. It includes Xenon High-Intensity Discharge (HID) articulating projector beam headlights that turn as the vehicle turns, enhancing visibility while cornering at night. Also included is Head-Up Display (HUD) instrumentation and Side Blind Zone Alert. You won't find this combination of collision avoidance technologies on Acura TL, Infiniti G37 or Lexus ES 350.** The safety vision is clearly realized in LaCrosse.

** Based on latest 2010 competitive information available at time of printing.



LACROSSE MODEL OVERVIEW

LaCrosse CX features include:

- 182 hp 2.4L ECOTEC 4-cylinder engine with Direct Injection and Variable Valve Timing (VVT)
- GM Oil Life Monitoring System
- 6-speed automatic transmission with Driver Shift Control
- 4-wheel disc brakes with ABS and intelligent assist system
- StabiliTrak electronic stability control system
- Full-function traction control
- 17-in. high-vent steel wheels with covers
- Tire pressure monitoring system
- Heated, power exterior mirrors
- Remote keyless entry system
- Content theft alarm
- 6 air bags: dual-stage driver and front-passenger, front and rear inflatable side head curtain and front-seat side thorax
- Power 8-way driver seat adjuster
- Split-folding 60/40 rear seatbacks
- Tilt and telescopic steering column
- Leather-wrapped steering wheel with audio system controls
- Driver Information Centre
- Automatic single-zone climate control with air filtration system
- QuietTuning
- Power windows and programmable door locks
- Cruise control
- 7-speaker audio system with CD player, MP3 playback and auxiliary audio input jack
- Bluetooth phone connectivity
- OnStar* with 6 months of the Directions & Connections Plan and Turn-by-Turn Navigation.

LaCrosse CXL supplements the CX features with:

- 280 hp 3.6L V6 with Direct Injection and Variable Valve Timing (VVT)
- 18-in. painted machined-faced aluminum wheels.
- Halogen projector beam fog lights
- Heated, power exterior mirrors with integrated turn indicators and puddle lights
- Remote vehicle starter system
- Variable-effort power steering
- Auto-dimming interior rear-view mirror
- Power 4-way driver lumbar adjuster
- Power 8-way front-passenger seat adjuster
- Automatic dual-zone climate control with air filtration system and windshield humidity sensor
- Universal home remote transmitter.

LaCrosse CXL AWD supplements the CXL features with:

- Haldex intelligent All-Wheel-Drive (AWD) system with electronically-controlled rear limited-slip differential.

LaCrosse CXS supplements the CXL features with:

- High-Performance (HiPer strut) front suspension
- 18-in. chrome-plated aluminum wheels
- Xenon High-Intensity Discharge (HID) adaptive projector beam headlights
- Heated, power exterior mirrors with integrated turn signal indicators, puddle lights, memory and driver-side auto-dimming
- Dual bright styled exhaust tips
- Ultrasonic rear parking assist
- E-Z Key passive entry system
- Heated, wood and leather-wrapped steering wheel with audio system controls
- Perforated leather-appointed seating surfaces
- Heated and ventilated front bucket seats with driver memory feature
- Driver Information Centre with multi-colour display
- harman/kardon 384-Watt 11-speaker premium 5.1 matrix surround audio system
- USB port in console
- XM Satellite Radio**
- Rear power centre with 3-prong 120-volt household AC outlet
- Power rear sunshade.

* Visit onstar.ca for coverage map, details and system limitations. Services vary by model and conditions.

** Available in 10 Canadian provinces and the 48 contiguous United States. Subscription sold separately after trial period. Visit xmradio.ca for details.

ACCESSORIES

MAKE LACROSSE A FURTHER EXTENSION OF YOUR PERSONALITY.

The 2011 Buick LaCrosse gives you a number of ways to personalize your driving experience. You can take that concept even further with the addition of available dealer-installed Buick Accessories. They can enhance everything from LaCrosse's style to its functionality – even your peace of mind.

Why Buick Accessories? They are the only ones that were integrated into LaCrosse's comprehensive vehicle development process, ensuring excellent fit, finish and functionality. And they are the only accessories backed by Buick's 4-year/80,000 km New Vehicle Limited Warranty.* Ask your sales consultant for a complete list of Buick Accessories for LaCrosse, or visit gm.ca

*Whichever comes first, when permanently installed by the dealer at the time you purchased your new vehicle, or for the remainder of the New Vehicle Limited Warranty if installed after the time of your vehicle purchase, but no less than 12 months.



The one-piece, custom-moulded rear spoiler forms a seamless accent to LaCrosse's exterior contours.



The cargo tray helps protect the trunk with its heavy-duty non-skid surface.



Front and rear premium floor mats feature deep-patterned grids to collect water, mud and snow.

19-in. polished 5-spoke aluminum wheels accentuate LaCrosse's sportiness.

BUICK OWNERSHIP EXPERIENCE

LaCrosse builds on Buick's renowned quality and meticulous craftsmanship. You can take to the road with added confidence knowing that the 2011 Buick LaCrosse is backed by the best coverage in Canada:

- 4-year/80,000 km New Vehicle Limited Warranty**
- 5-year/160,000 km Powertrain Component Limited Warranty with \$0 deductible on repairs and the warranty is fully transferable at no charge**
- 5-year/160,000 km Courtesy Transportation**
- 5-year/160,000 km 24/7 Roadside Assistance**
- 6-year/160,000 km rust-through perforation coverage**
- 8-year/130,000 km coverage on catalytic converters and powertrain control modules (PCMs).**

**Whichever comes first. Conditions and limitations apply. See dealer for details.

OTHER OWNERSHIP PRIVILEGES AND PROGRAMS:†

- **GM Protection Plan (GMPP)** – the only extended service plan backed by the resources and commitment of General Motors; GMPP may be purchased at the time of your sale or subsequently during the New Vehicle Limited warranty period
- **GM Goodwrench Service** – with GM-certified technicians and GM-approved parts, nobody knows your GM vehicle better.

†Conditions and limitations apply.

TO HELP YOU PURCHASE A NEW VEHICLE:

- **Purchase Financing** – on-the-spot financing at your GM dealership††
- **GM Student Bonus Program** – Students or recent graduates of high school, college or university† may be entitled to receive a Student Bonus vehicle redemption allowance of \$500 or \$750† (tax inclusive) (purchased vehicle dependant) to use towards the purchase, lease or finance of one eligible new Buick vehicle.
- **The GM Card** – GM cardholders may redeem up to \$3500 GM Card® Earnings (subject to Vehicle Redemption Allowances) toward the Total Purchase Price on eligible new GM vehicles†. For full program details please visit thegmcard.ca

† Conditions and limitations apply. †† Subject to eligibility.

‡ Program subject to change.

INFORMATION RESOURCES:

You can find more information about these programs from your GM dealer, or at these information centres:

- The Buick website at buick.ca
- The GM Customer Communication Marketing Centre at **1-800-GM-DRIVE (1-800-463-7483 or 1-800-263-3830** for TDD users).

A WORD ABOUT THIS BROCHURE

Some of the equipment shown or described throughout this brochure may be available at extra cost. We have tried to make this brochure comprehensive and factual. We reserve the right, however, to make changes at any time, without notice, in prices, colours, materials, equipment, specifications, models and availability. Specifications, dimensions, measurements, ratings and other numbers in this brochure and other printed materials provided at the dealership or affixed to vehicles are approximates based upon design and engineering drawings and prototypes and laboratory tests. Your vehicle may differ due to variations in manufacture and equipment. Since some information may have been adapted since the time of printing, please check with your GM dealer for complete details. General Motors of Canada Limited reserves the right to lengthen or shorten the model year for any product, for any reason, or to start and end model years at different times.

A WORD ABOUT ASSEMBLY

GM vehicles are equipped with engines and components produced and assembled by different operating units of General Motors, its subsidiaries and suppliers and these engines and components may change or be obtained from different sources from time to time. All such engines and components are approved for use in GM vehicles. Certain equipment ordered may be unavailable at the time of assembly and we suggest that you verify that your vehicle includes the equipment you ordered, or if there are changes, that they are acceptable to you.

TRADEMARKS

The marks appearing in this brochure including, but not limited to: General Motors, GM, Buick, the Buick logo, LaCrosse and their respective logos, emblems, slogans and vehicle model names and body designs; and other marks such as ECOTEC, QuietTuning, StabiliTrak and Twilight Sentinel are all trademarks of General Motors and/or General Motors of Canada Limited, its subsidiaries, affiliates or licensors.

OnStar and the OnStar emblem are registered trademarks of the OnStar Corporation.

TheftLock is a registered trademark of Delphi Automotive Systems.

The XM name and related logos are trademarks of XM Canada, Canadian Satellite Radio Inc.

iPod is a trademark of Apple Computer, Inc., registered in the U.S. and other countries.

Bluetooth is a registered trademark of Bluetooth SIG Inc.

harman/kardon is a registered trademark of Harman International Industries, Incorporated.

COPYRIGHT

©Copyright 2010 General Motors of Canada Limited. All Rights Reserved. All text, images, graphics, and other materials in this brochure are subject to the copyright and other intellectual property rights of General Motors and/or General Motors of Canada Limited. These materials may not be reproduced, distributed or modified without the express written permission of General Motors and/or General Motors of Canada Limited.

Printed in Canada, August 2010.



LACROSSE STANDARD FEATURES & OPTIONAL EQUIPMENT

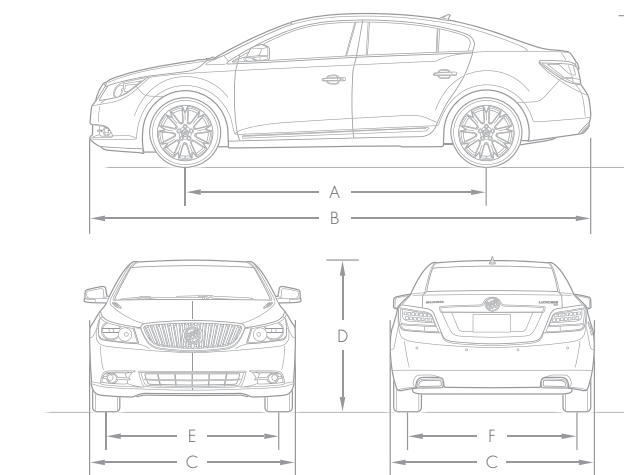
SAFETY & SECURITY	CX	CXL	CXL AWD	CXS
AIR BAGS – dual-stage, driver and front-passenger, frontal with Passenger Sensing System	S	S	S	S
AIR BAGS – driver and front-passenger, seat-mounted side-impact	S	S	S	S
AIR BAGS – front-to-rear, outboard seating positions, head curtain side-impact	S	S	S	S
AIR BAGS – rear passenger, seat-mounted side-impact	O	O	O	O
BRAKE/TRANSMISSION SHIFT INTERLOCK	S	S	S	S
DOOR LOCKS – power, programmable with lock-out protection and delayed locking features	S	S	S	S
DOOR LOCKS – rear, electronic, child-security	S	S	S	S
HEADLIGHTS – Daytime Running Lights with automatic light control (includes Twilight Sentinel® with delay feature)	S	S	S	S
HEADLIGHTS – halogen	S	S	S	S
HEADLIGHTS – Xenon High-Intensity Discharge, adaptive	–	O ¹	O ¹	S
KEYLESS ENTRY SYSTEM – remote, includes perimeter lighting and Panic feature	S	S	S	S
KEYLESS ACCESS – E-Z Key passive entry system, includes keyless ignition start, door lock/unlock passive entry and trunk passive unlock with separate trunk release button	–	–	–	S
ONSTAR* IN-VEHICLE COMMUNICATIONS AND ASSISTANCE SERVICE – includes 6 months of the Directions and Connections Plan with Turn-by-Turn Navigation	S	S	S	S
SAFETY RESTRAINTS – LATCH (Lower Anchors and top Tethers for Children), rear seats	S	S	S	S
SIDE BLIND ZONE ALERT ¹	–	O	O	O
STABILITRAK – electronic stability control system	S	S	S	S
THEFT-DETERRENT SYSTEM – audible/visible content theft alarm	S	S	S	S
THEFT-DETERRENT SYSTEM – electronic immobilizer	S	S	S	S
TRACTION CONTROL – electronic, full-function, all-speed	S	S	S	S
ULTRASONIC REAR PARKING ASSIST – rear obstacle detection with audible/visible warning	–	O ¹	O ¹	S
DRIVER CONFIDENCE PACKAGE – includes Side Blind Zone Alert, Head-Up Display (HUD) instrumentation, includes ultrasonic rear parking assist and adaptive Xenon High-Intensity Discharge (HID) headlights on CXL and CXL AWD models	–	O ²	O ²	O
MECHANICAL				
BATTERY – with run-down protection	S	S	S	S
BRAKES – power, 4-wheel disc	S	S	S	S
BRAKES – 4-wheel anti-lock braking system (ABS) with intelligent brake assist	S	S	S	S
DRIVE – front-wheel	S	S	–	S
DRIVE – all-wheel, Haldex intelligent AWD electronically controlled system with rear electronic limited-slip differential	–	–	S	–
ENGINE – 2.4L ECOTEC I-4 with VVT and Direct Injection Horsepower – 182 @ 6700 rpm; Torque – 172 lb.-ft. @ 4900 rpm	S	O ³	–	–
ENGINE – 3.6L DOHC V6 with VVT and Direct Injection Horsepower – 280 @ 6300 rpm; Torque – 259 lb.-ft. @ 4800 rpm	O ⁴	S	S	S
ENGINE – block heater	O	O	O	O
EXHAUST SYSTEM – aluminized stainless steel	S	S	S	S
EXHAUST SYSTEM – dual hidden tips	S	S	S	–
EXHAUST SYSTEM – dual bright tips	–	–	–	S
STEERING – power, rack-and-pinion, electric	S	O ³	–	–
STEERING – power, rack-and-pinion, hydraulic	O ⁴	–	–	–
STEERING – power, rack-and-pinion, variable-effort, magnetic	–	S	S	S
SUSPENSION – 4-wheel independent	S	S	S	S
SUSPENSION – rear, 4-link	S	S	–	S
SUSPENSION – rear, H-arm	–	–	S	O ⁵
SUSPENSION – continuously variable real-time damping with Sport mode selectivity	–	–	–	O ⁵
SUSPENSION – High-Performance (HiPer) front struts	–	–	–	S
TRANSMISSION – 6-speed electronically controlled automatic with overdrive and Driver Shift Control	S	S	S	S
VEHICLE STARTER SYSTEM – remote	O ⁶	S	S	S

EXTERIOR	CX	CXL	CXL AWD	CXS
FOG LIGHTS – projector beam	–	S	S	S
GLASS – Solar-Ray, tinted	S	S	S	S
MIRRORS – manual folding, power remote control, heated	S	–	–	–
MIRRORS – manual folding, power remote control, heated with integrated turn signal and puddle lamps	–	S	S	–
MIRRORS – manual folding, power remote control, heated with integrated turn signal and puddle lamps, memory and driver-side auto-dimming feature	–	O ⁷	O ⁷	S
MOULDINGS – rocker, body-colour with chrome insert	S	S	S	S
REARVIEW CAMERA SYSTEM – reverse assist for parking or trailer towing hook up, monitor integrated into Navigation System ⁸	–	O	O	O
SPOILER – rear deck, body colour, flush mount	O	O	O	O
SUNROOF – oversize, power, sliding glass panel with express-open feature	O	O	O	O
TIRES – P245/50R17 all-season**	S	O ³	–	–
TIRES – P235/50R18 all-season**	–	S	S	S
TIRES – P245/40R19 all-season**	–	–	–	O ⁵
WHEELS – 17" x 7" high-vent steel with cover (A)	S	–	–	–
WHEELS – 17" x 7" machined aluminum (B)	O	O ³	–	–
WHEELS – 18" x 8" painted machined-faced aluminum (C)	–	S	S	–
WHEELS – 18" x 8" chrome-plated aluminum (D)	–	O ⁹	O	S
WHEELS – 19" x 8" 9-spoke painted machined aluminum (E)	–	–	–	O ⁵
WINDSHIELD WIPERS – 2-speed with variable delay (intermittent)	S	S	S	S
CX V6 PACKAGE – includes 3.6L DOHC VVT DI V6 engine, hydraulic rack-and-pinion power steering, and 17" x 7" machined aluminum wheels (B)	O	–	–	–
CXL 2.4L PACKAGE – includes 2.4L ECOTEC VVT DI I-4 engine, electric rack-and-pinion power steering and 17" x 7" machined aluminum wheels (B) and P245/50R17 all-season** tires	–	O	–	–
TOURING PACKAGE – includes 19" x 8" painted 9-spoke machined aluminum wheels (E), P245/40R19 all-season** tires, rear H-arm suspension and continuously-variable real-time damping suspension with selective Sport mode	–	–	–	O

INTERIOR	CX	CXL	CXL AWD	CXS
AIR CONDITIONING – automatic, single zone	S	–	–	–
AIR CONDITIONING – automatic, dual-zone with rear-seat outlets, windshield humidity sensor and auto defog activation	O ⁶	S	S	S
AIR FILTRATION SYSTEM – pollen filter	S	S	S	S
AUXILIARY POWER OUTLET – 2	S	S	S	S
AUXILIARY POWER OUTLET – rear-seat, 3-prong 120-volt household outlet,	O ¹⁰	O ^{10,11}	O ^{10,11}	S
CARGO CONVENIENCE NET	S	S	S	S
CONSOLE – front floor with dual cupholders and 2-way adjustable armrest with multi-level storage	S	S	S	S
CRUISE CONTROL – electronic with resume, coast and decelerate/accelerate features	S	S	S	S
FLOOR MATS – front and rear, carpeted	S	S	S	S
HEATER DUCTS – rear-seat, floor	S	S	S	S
INSTRUMENTATION – analogue cluster (includes speedometer, tachometer, coolant temperature and fuel gauges)	S	S	S	S
INSTRUMENTATION – Driver Information Centre, monochrome display (includes multi-colour display on CXS) with programmable features including language, vehicle security settings, key fob-controlled personalization and exterior lighting settings, trip odometer, exterior temperature display and GM Oil Life Monitoring System and compass	S	S	S	S
INSTRUMENTATION – tire pressure monitoring system	S	S	S	S
INSTRUMENTATION – Head-Up Display (HUD) ¹	–	O	O	O
LIGHTING – custom entry/exit with theatre dimming, front map lights, rear reading lights, front footwells, puddle lights and trunk	S	S	S	S
LIGHTS – ice blue ambient LED lighting on front and rear doors, console and instrument panel light pipe	S	S	S	S

INTERIOR (CONTINUED)	CX	CXL	CXL AWD	CXS
MIRROR – rear-view with OnStar controls	S	–	–	–
MIRROR – rear-view with auto-dimming feature and OnStar controls	–	S	S	S
RETAINED ACCESSORY POWER	S	S	S	S
SILL PLATES – door, with chrome appliqué	S	S	S	S
STEERING COLUMN – tilt and telescopic adjustable	S	S	S	S
STEERING WHEEL – leather-wrapped with sound system controls, includes leather-wrapped shifter	S	S	S	–
STEERING WHEEL – leather-wrapped, heated with wood inserts and sound system controls, includes leather-wrapped shifter	–	–	–	S
SUNSHADES – LH and RH padded; sliding extendable with illuminated vanity mirrors	S	S	S	S
SUNSHADE – power, rear-window	–	–	–	S
TRUNK – release, power remote	S	S	S	S
UNIVERSAL HOME REMOTE – 3-channel programmable transmitter	–	S	S	S
WINDOWS – power, driver and front-passenger express-up/down, rear-passenger express-down and rear-passenger window lock-out features	S	S	S	S
CANADIAN COMFORT PACKAGE – includes remote vehicle starter system and dual-zone climate control with windshield humidity sensor and auto defog activation	O	–	–	–
CXL LUXURY PACKAGE – includes heated driver and front-passenger seats with leather-appointed seating surfaces and memory settings for driver's seat and exterior mirrors with driver's side auto-dimming feature	–	O	O	–
SEATING				
CLOTH RECLINING FRONT BUCKET SEATS with seatback map pockets	S	S	S	–
RECLINING FRONT BUCKET SEATS WITH LEATHER-APPOINTED SEATING SURFACES (perforated leather on CXS), seatback map pockets	–	O ⁷	O ⁷	S
HEATED, driver and front-passenger seats	–	O ⁷	O ⁷	–
HEATED AND VENTILATED, driver and front-passenger seats	–	–	–	S
POWER 8-WAY DRIVER SEAT ADJUSTER	S	S	S	–
POWER 8-WAY DRIVER SEAT ADJUSTER with memory	–	O ⁷	O ⁷	S
POWER 4-WAY DRIVER LUMBAR ADJUSTER	–	S	S	S
MANUAL 4-WAY FRONT-PASSENGER SEAT with power height adjuster	S	–	–	–
POWER 8-WAY FRONT-PASSENGER SEAT ADJUSTER	–	S	S	S
REAR-SEAT CENTRE ARMREST with dual cupholder	S	S	S	S
SEATBACKS – rear, 60/40 split-folding with dual cupholders	S	S	S	S
ENTERTAINMENT SYSTEMS				
LACROSSE SOUND SYSTEMS include an electronically tuned AM/FM stereo with CD player, MP3 playback compatibility, seek, scan, speed-compensated volume, auto-tone control, TheftLock® and auxiliary audio input jack	S	S	S	S
ENTERTAINMENT PACKAGE – includes 11-speaker 384-Watt harman/kardon 5.1 matrix surround system, USB port and rear-seat 3-prong 120-volt household power outlet	O	O	O	S
NAVIGATION SYSTEM PACKAGE – includes AM/FM stereo with CD/DVD player and Navigation System, ¹² 40 GB hard drive, 11-speaker 384-Watt harman/kardon 5.1 matrix surround system, USB port and rear-seat 3-prong 120-volt household power outlet and rearview camera system	–	O ¹³	O ¹³	O
REAR-SEAT DVD PACKAGE – includes two seatback-mounted LCD screens, two wireless headsets, 2 GB flash memory, AM/FM stereo with CD/DVD player, 11-speaker 384-Watt harman/kardon 5.1 matrix surround system, USB port and rear-seat 3-prong 120-volt household power outlet	–	O ¹³	O ¹³	O
NAVIGATION SYSTEM WITH REAR-SEAT DVD PACKAGE – includes AM/FM stereo with CD/DVD player and Navigation System, 40 GB hard drive, two seatback-mounted LCD screens, two wireless headsets, 11-speaker 384-Watt harman/kardon 5.1 matrix surround system, USB port and rear-seat 3-prong 120-volt household power outlet	–	O ¹³	O ¹³	O
Z-SPEAKER SOUND SYSTEM	S	S	S	–
11-SPEAKER HARMAN/KARDON 384-Watt 5.1 matrix surround sound system	O ¹⁰	O ^{10,11}	O ^{10,11}	S
USB PORT input jack for iPod or other MP3 player or mass media device, located inside centre console	O ¹⁰	O ^{10,11}	O ^{10,11}	S
BLUETOOTH – in-vehicle mobile phone connectivity system	S	S	S	S
XM SATELLITE RADIO ¹	O	O	O	S

DIMENSIONS



EXTERIOR, MM (IN.)	
WHEELBASE (A)	2837 (111.7)
LENGTH (B)	5001 (196.9)
WIDTH (C)	1857 (73.1)
HEIGHT (D)	1496 (58.9)
FRONT TREAD (E)	1585 (62.4)
REAR TREAD (F)	1588 (62.5)
INTERIOR, MM (IN.) FRONT/REAR	
HEADROOM	960/945 (37.8/37.2)
LEGROOM	1059/991 (41.7/39.0)
SHOULDER ROOM	1450/1422 (57.1/56.0)
HIP ROOM	1341/1420 (52.8/55.9)
CAPACITIES/WEIGHT	
TRUNK, L (CU. FT.) – CX, CXL, CXL AWD – CXS	377 (13.3) 363 (12.8)
FUEL TANK, L (IMP. GAL.) – CX, CXL, CXS – CXL AWD	68 (15.0) 72 (15.8)
CURB WEIGHT (EST.), KG (LB.) – CX – CXL – CXL AWD – CXS	1704 (3757) 1767 (3896) 1877 (4138) 1820 (4012)

TOWING

2.4L ECOTEC I-4 DI VVT; 3.23 FINAL DRIVE RATIO; NOT RECOMMENDED
3.6L DOHC V6 DI VVT; 2.77 FINAL DRIVE RATIO; 454 KG (1000 LB.) MAXIMUM GROSS TRAILER WEIGHT ^{††}

S – Standard, O – Optional individually or in combination with other optional equipment.
 1 – Included with available Driver Confidence Package.
 2 – Requires CXL Luxury Package.
 3 – Included with available CXL 2.4L Package.
 4 – Included with available CX V6 Package.
 5 – Included with available Touring Package.
 6 – Included with available Canadian Comfort Package.
 7 – Included with available CXL Luxury Package.
 8 – Included with available Navigation System Radio.
 9 – Not available with CXL 2.4L Package.
 10 – Included with available Entertainment Package.
 11 – Included with available Rear Seat DVD Package or Navigation System Radio.
 12 – At time of print, detailed map coverage is available for most major urban areas of the United States and for certain metropolitan areas of Canada (Vancouver, Calgary, Edmonton, Winnipeg, Windsor, London, Toronto, Ottawa, Montreal, Quebec City and Halifax). Coverage is significantly limited outside these areas.
 13 – Requires available XM Satellite Radio.
 * Visit onstar.ca for coverage map, details and system limitations. Services vary by model and conditions.
 ** All-season tires may not satisfy winter tire requirements in all regions of the country. Tires specifically designed for severe winter conditions and marked with the "winter tire" symbol may be required during certain months or in certain regions. Contact your Provincial, Municipal or local road authority for information regarding which tires are required in your particular area.
 † Available in 10 Canadian provinces and the 48 contiguous United States. Subscription sold separately after Visit xmradio.ca for details.
 †† Includes weight of trailer, cargo, passengers and equipment. All towing recommendations are subject to change. Trailer tongue should be 10% of the maximum trailer weight but should not exceed the load rating specified for that vehicle, engine or hitch combination. See your dealer or refer to the LaCrosse Owner's Manual for details.

INTERIOR COLOURS



CXL Ebony Leather-Appointed Seating Surfaces.

CXS Ebony Perforated Leather-Appointed Seating Surfaces.

LACROSSE CXS INTERIOR WITH EBONY PERFORATED LEATHER-APPOINTED SEATING AND EBONY TRIM.



CX and CXL Cashmere Cloth.

CXL Cashmere Leather-Appointed Seating Surfaces.

CXS Cashmere Perforated Leather-Appointed Seating Surfaces.

LACROSSE CXS INTERIOR WITH CASHMERE PERFORATED LEATHER-APPOINTED SEATING AND COCOA TRIM.



CX and CXL Light Titanium Cloth.

CXL Light Titanium Leather-Appointed Seating Surfaces.

CXS Light Titanium Perforated Leather-Appointed Seating Surfaces.

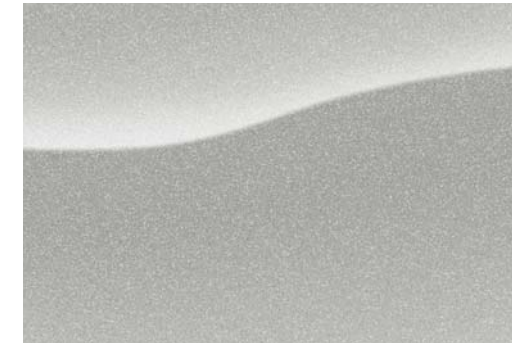
LACROSSE CXS INTERIOR WITH LIGHT TITANIUM PERFORATED LEATHER-APPOINTED SEATING AND DARK TITANIUM TRIM.

EXTERIOR/INTERIOR COLOUR COMPATIBILITY

EXTERIOR COLOURS	INTERIOR COLOURS		
	Ebony	Cashmere	Light Titanium
GAN – Quicksilver Metallic	•		•
GAO – Gold Mist Metallic	•	•	
GAP – Midnight Blue Metallic	•	•	•
GAQ – Red Jewel Tintcoat*	•	•	•
GAR – Carbon Black Metallic*	•	•	•
GAZ – Summit White	•	•	•
GBN – White Diamond Tricoat*	•	•	•
GHA – Mocha Steel Metallic	•	•	•

* Available at extra cost.

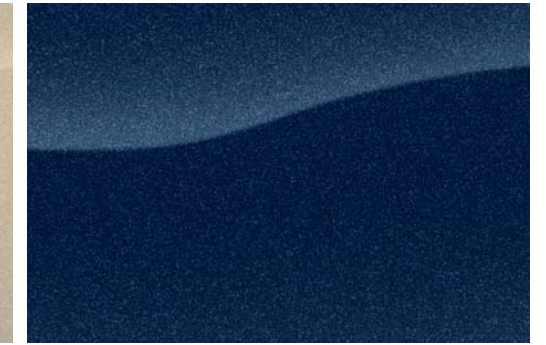
EXTERIOR COLOURS



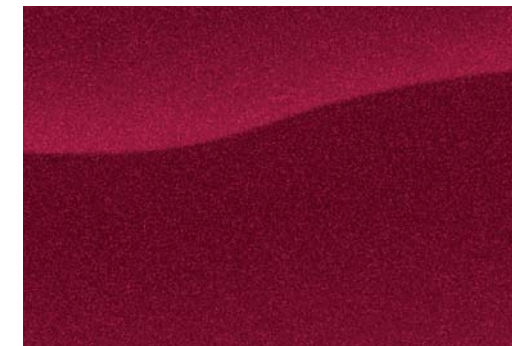
GAN – Quicksilver Metallic



GAO – Gold Mist Metallic



GAP – Midnight Blue Metallic



GAQ – Red Jewel Tintcoat*



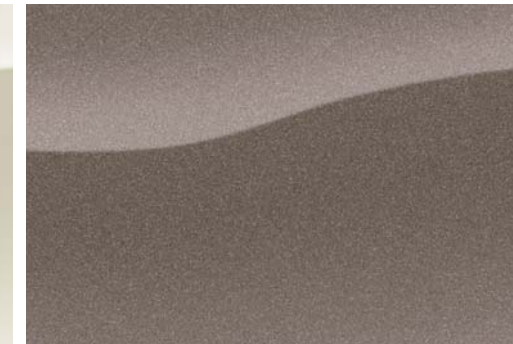
GAR – Carbon Black Metallic*



GAZ – Summit White



GBN – White Diamond Tricoat*



GHA – Mocha Steel Metallic

Due to limitations in the printing process, the colours shown may differ slightly from the actual colour. For more accurate colour samples, ask your sales consultant to see the dealer showroom vehicle colour display. *Available at extra cost.

WHEELS



A – 17" high-vent steel with cover (PYX)



B – 17" machined aluminum (Q04)



C – 18" painted machine-faced aluminum (PW2)



D – 18" chrome-plated aluminum (Q52)



E – 19" 9-spoke painted machined aluminum (Q70)



LACROSSE | buick.ca |

THE NEW CLASS OF WORLD CLASS

