

# Proton *PREVÉ*



Perusahaan Otomobil Nasional Sdn Bhd (100985-U)

A Member of

**DRB-HICOM**



# Proton *PREVÉ*



Prevé. It's a word that means proof. A name that embodies everything PROTON aspires to and, ultimately delivers.

But don't take our word for it. Let the car be the proof of our commitment to be better. Because we know you won't settle for anything less.

## Exterior

The Prévé captures the breathtaking image of power and athleticism beautifully. The interplay of curves and muscular edges along its sleek profile conveys movement while its interconnected accents give it a stable, wider feel.



### A NEW SIGNATURE LOOK: PROTON WINGS

A unified design element that fuses the headlights, the PROTON emblem and air-intake grille with seamless lines and classy curves.



### 16" ALLOY WHEELS

Anchors the Prévé's dynamic stance and sleek exterior style.

### LED LIGHTS

Blending gorgeous style with functionality.

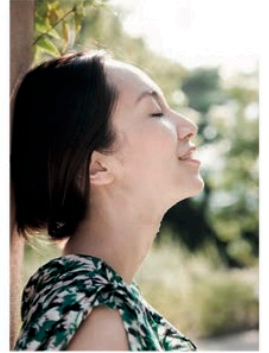
### AERODYNAMIC STYLING

Designed to reduce drag and enhance fuel efficiency.



# Interior

Be captivated with the Prevé's design sensibilities that extend inwards to reveal an ergonomic layout with spacious cabin comfort, extra rear passenger legroom and vast headroom with a cavernous boot space.



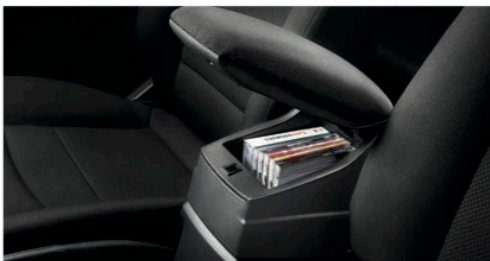
## ERGONOMIC DESIGN

The cabin is designed for maximum comfort for the driver and passengers, with wide, ergonomic seats and plenty of rear and front leg room, creating a feeling of lightness and elegance.



## BOOT SPACE

508-litre boot space gives plenty of room to store extra large luggage bags, golf bags and oversized suitcases.



## AMPLE STORAGE SPACE

Numerous storage areas including centre console box, a large glove compartment and multiple cup holders. Also equipped with a tissue box compartment at each of the 4 doors and complemented by handy hooks for hanging a variety of items.



## ENGINE PUSH-START\*

The car integrates elegant technological features such as this engine push-start button for your convenience.

# Performance

The Prevé breaks all barriers among compact sedans by offering category-defining features and performance.



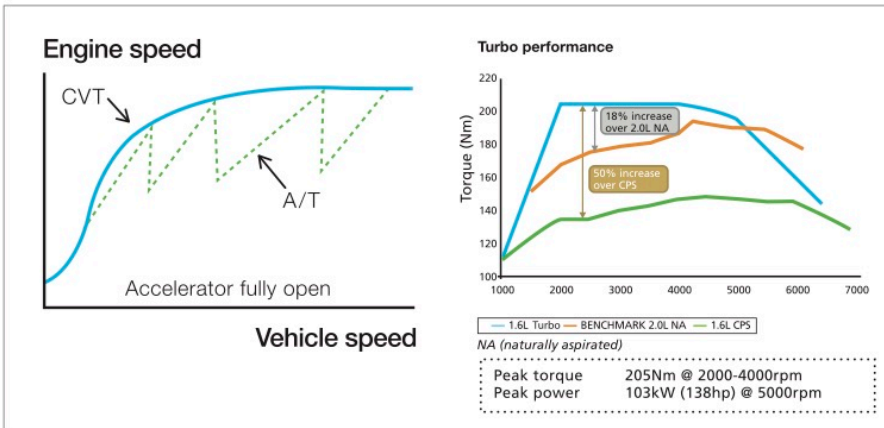
## 1.6L TURBO ENGINE\*

The 1.6L Turbo engine with light pressure turbocharger offers the best of both worlds - **138hp** of sheer adrenaline rush and **205Nm** of torque balanced with an impressive fuel economy.



## 7-SPEED PROTRONIC TRANSMISSION WITH PADDLE SHIFTERS\*

Race car-inspired technology that lets you drive the way you want – with easy comfort or exhilarating control.



## CONTINUOUS VARIABLE TRANSMISSION (CVT)

The CVT uses a belt rather than fixed gears to turn engine torque into power, which means better fuel economy, less gear wear and tear, and more eco-friendly emissions.

# Convenience

The Prevé is engineered with a number of thoughtful features in order to make your life easier and your drive more pleasurable.



## SMART INFO DISPLAY

Displays information and status updates on the car's various functions – such as average fuel consumption, KMs to empty tank, battery health and faulty bulb indicators.



## AUTO RAIN SENSOR\*

Automatically switched on when your windscreen is obscured with water.



## TOUCHSCREEN GPS\*

Directions and routes displayed conveniently.



## ELECTRIC WING MIRROR\*

Adjust angle or fold in automatically.

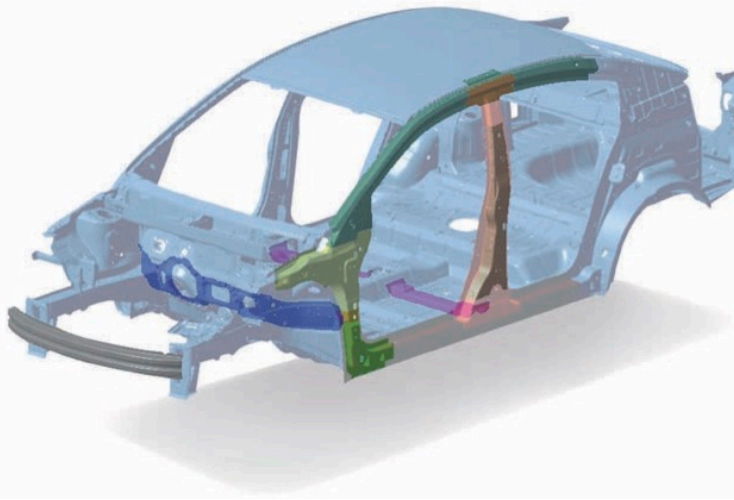


## AUTO LIGHT SENSOR\*

Set this to auto and never worry about forgetting to switch on your headlights again.

# Safety

Beneath the plush trimmings of the Prevé's frame lies an interconnected web of safety features and technology; such as its **Reinforced Safety Structure** that helps ensure the cabin remains intact during a collision, **Active Headrests** that help prevent neck injuries, and a **Collapsible Steering Wheel** that breaks apart to avoid impacting the driver – all designed to work in harmony to keep you protected and in control as much as possible.

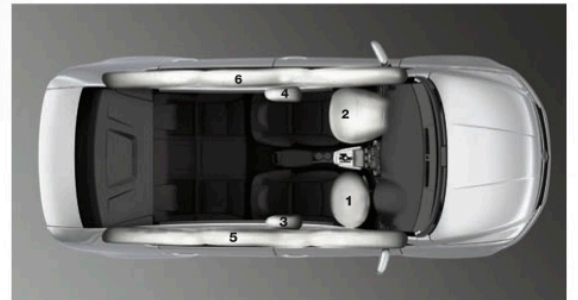


## RESS

### REINFORCED SAFETY STRUCTURE

The RESS achieves better torsional rigidity yet retaining ideal weight, which adds to the Prevé's fuel efficiency. It is designed to comply with global automotive safety standards and offer maximum protection from front, side and rear impacts. Its frame consists of 12 key components forged using the hot press process for high-tensile strength.

**SIX AIRBAGS**  
Fully equipped with front, side and curtain airbags.

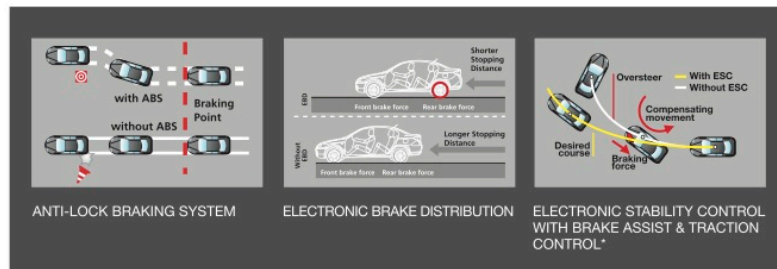


**When it comes to safety, not all cars are equal.**

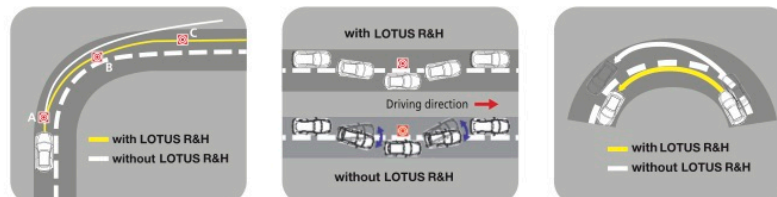
The Australasian New Car Assessment Program (ANCAP) has rated Prevé with 5 star. It's proven! Your safety is our priority.

### HIGH PERFORMANCE BRAKING

While the car boasts impressive acceleration, it is equally critical for it to stop quickly. It excels in this respect with its **Electronic Brake Distribution** and **Brake Assist** system. The **Traction Control** ensures better tyre grip on slippery road and maximises vehicle acceleration.



Tuned by PROTON engineers to Lotus specifications, the Prevé's handling boasts unsurpassed control during emergency situations.



VARIANT	Executive		Premium
	5 M/T	CVT	CVT
<b>Powertrain</b>			
Engine	1.6 IAFM+		1.6 TURBO
Total displacement	1597		1561
Bore x stroke	76.0 x 88.0		76.0 x 86.0
Maximum output	80/5750		103/5000
Maximum torque	150/4000		205/2000-4000
Fuel tank capacity	L		50
<b>Performance</b>			
Maximum speed	180	170	190
Acceleration 0 - 100 km/h	12.0	12.5	9.6
Fuel consumption @ 90km/h	L/100km	6.2	5.8
Minimum turning radius	m		5.3
Transmission	5-speed manual	6-speed CVT	7-speed ProTronic
<b>Chassis</b>			
Power steering	Hydraulic power steering		
Suspension	front	Macpherson Strut	
	rear	Multilink with stabiliser bar	
Brake	front	Vent disc 15"	
	rear	Solid disc 15"	
Tyre & wheel size	205/55 R16 - Alloy		
<b>Dimension &amp; weight</b>			
Overall L x W x H	mm		
Wheelbase	mm		
Track front & rear	mm		
Ground clearance	mm		
Luggage volume	L		
Kerb weight	kg	1305	1325
Gross vehicle weight	kg	1665	1685
<b>Safety &amp; security</b>			
ABS with EBD	✓		✓
Dual SRS airbags with seatbelt pre-tensioner	✓		✓
Front active headrest	✓		✓
Anti-trap power window (Driver side only)	✓		✓
Front and rear fog lamps	✓		✓
Immobiliser	✓		✓
Brake Assist (BA) and Traction Control	✓		✓
Electronic Stability Control (ESC) & Switch	✓		✓
Side airbags	✓		✓
Curtain airbags	✓		✓
Parking sensor	✓		✓
ISOFIX seat mountings & Top tether for child seat	✓		✓
Auto headlamp	-		✓
<b>Features</b>			
Seat	Fabric (water repellent)		
Door trim	Fabric		
Steering wheel	With audio switch	Leather wrapped with audio switch	
Side mirror with LED turn signal	Manual fold	Auto fold	
Audio system	CD MP3 Player with Bluetooth, USB & iPod connectivity		
GPS navigation	-	✓ (Built in)	
Driver's seat height adjuster	✓		✓
Projector headlamp with LED position lamp	✓		✓
Paddle shifters	-		✓
Auto climate air conditioner	✓		✓
Trunk lid remote release	✓		✓
Rear spoiler	-		✓
Push start button	-		✓
Auto cruise	-		✓
Auto wipers	-		✓
Follow me home light	✓		✓
<b>Accessories</b>			
Enhanced safety kit	✓		✓
4G in car WiFi	✓		✓
Tinted film (4 windows with break resistance)	-		✓
Plate holder	✓		✓
<b>Color option</b>			
Fire red	✓		✓
Genetic silver	✓		✓
Solid white	✓		✓
Tranquility black	✓		✓
Elegant brown	✓		✓
Soft lilac	✓		✓



All information detailed in this leaflet is correct at the time of printing. Perusahaan Otomobil Nasional Sdn. Bhd. reserves the right to make changes to the colours, features and/or other specifications detailed in this leaflet as well as discontinue any individual model without prior notice. The vehicle may differ slightly from those featured in this leaflet. Please consult your PROTON dealer to ensure the vehicle is in accordance with your expectations. 2015 (All rights reserved) Perusahaan Otomobil Nasional Sdn. Bhd.