



 **HYUNDAI** *ix20*



HYUNDAI

NEW
THINKING.
NEW
POSSIBILITIES.

NEW THINKING

We love to be different. We look at the world in new and exciting ways – and share our excitement about what’s possible. That’s why we’ve become one of the world’s largest and fastest growing car manufacturers.

Our designers always question the accepted rules. It’s this ‘opposite thinking’ that sets us apart. With the Hyundai ix20 we’ve proved that not all spacious cars have to look like

boxes. We spend our lives in boxes, so why drive one? This simple idea has produced a compact MPV that’s not just comfortable, versatile, efficient and flexible, but one that is stylish inside and out. All backed up by our unique 5 Year Triple Care Package.

The Hyundai ix20 – Why spend life in a box?

CONTENTS

4	EXTERIOR	20	SAFETY
6	STYLE	22	DECISIONS DECISIONS
8	SPACE	24	COLOUR & TRIM
10	TECHNOLOGY	26	SPECIFICATIONS
12	CONTROL	28	TECHNICAL DATA
14	COMFORT	30	BUYING HYUNDAI
16	VERSATILITY	31	OWNING HYUNDAI
18	EFFICIENCY		



ix20



STAND OUT FROM THE CROWD

The ix20 doesn't do boxy. You'll find fluid, flowing lines and an exciting overall design that turns heads at 50 paces. Close up, it gets even better, with clever detail touches integrating perfectly into the striking profile. Notice how the

lines of the hexagonal grille continue seamlessly through the headlamps and mirrors. Why drive in a box when you can drive in a car that looks as good as this?

LOOK BACK IN ENVY

The ix20 cleverly delivers high style without a hint of compromise. It brings together a number of smart design details that blend seamlessly with the flowing lines.

This attention to detail is something we are passionate about. You can detect it in the small touches we've

added right across the exterior. These aren't just about looks, they are designed to earn their place. For instance, the sculpted door mirrors reduce drag that in turn reduces fuel consumption.

Form with function? The ix20 – absolutely.



Headlights

The wrap-around headlights continue the line of the hexagonal grille, accentuating the character of the ix20.



Front fog lights (Style)

An integral part of the fluidic design, giving you improved visibility in fog and bad weather.



Eco pattern grille (Active & Style)

Taken from the original concept car design the unique eco pattern grille styling is very much part of the ix20's contemporary look.



Tail lights

Sculpted into the ix20's rear contours are the powerful rear light clusters that step out from the bodywork to compliment the fluidic design.



Body coloured and folding door mirrors (Style)

Cleverly designed to integrate into the overall design and engineered to reduce drag and improve fuel efficiency.



Body coloured door handles with chrome inserts (Active & Style)

Colour coordinated to fully integrate with the flowing lines of the car body.



Alloy wheels (Active & Style)

The lightweight alloy wheels blend contemporary design with practicality.



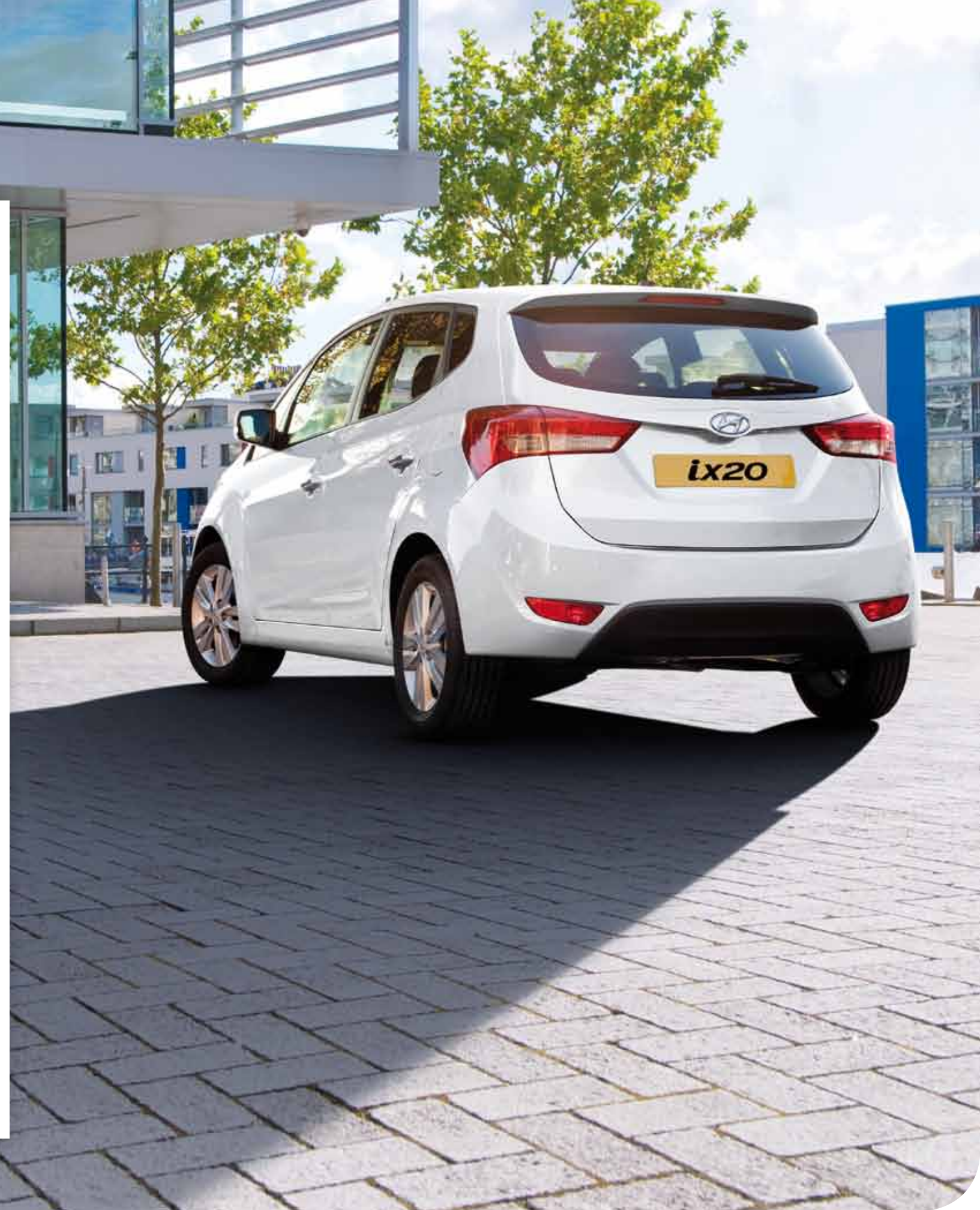
Rear design

The rear detail mirrors the styling on the front of the ix20 for design synergy.



Fluidic sculptured body-lines

Designed to echo the flowing symmetry of the window line and creating a unique look like no other car in its class. Design with purpose.



ix20

THE SKY'S THE LIMIT?

The fluid lines of the compact, stylish exterior house a spacious interior that seats five in style. As you close the door behind you with a reassuring 'thunk' you'll appreciate this feeling of space and light. Even more so if you opt for the Style model, complete with a panoramic sunroof.

The welcoming cabin has all the comfort and versatility required to make any journey a pleasure. And whether you're a driver or a passenger you'll have everything you need within easy reach, thanks to a wealth of clever design details.

ix20

WIDESCREEN HIGH DEFINITION

The beautifully arranged controls laid out in front of you make driving the ix20 so simple. From the comfort of the driver's seat they put you in complete command of your environment.

Everything is placed in the most natural position, with minimum movement needed to reach all the essentials.

The cool, blue illumination of the instrument panel, even the materials we've used – such as the soft touch feel to the dashboard – add to the feeling of smart ergonomics and quality design.

CENTRE PIECE

The ix20 offers a vast array of smart features. Ingeniously gathered into the centre console, they make your driving experience comfortable, convenient and intuitive.

Adjust your driving seat to the perfect position and you'll find everything you need exactly where you want it. Nothing superfluous, all as it should be – yet pleasingly different and brilliantly thought out.



Height and reach adjustable steering wheel column

Fine-tune your driving position with the multi-adjustable steering column.



Driver's seat height adjustment

Hands comfortably at the wheel and feet perfectly positioned on the pedals, with maximum support.



LCD audio display

This cool blue display is positioned at optimum eye level for safety and shows the radio channels or track titles as well as MP3 connectivity information, time and exterior temperature.



Steering wheel audio controls (Active & Style)

Eyes on the road and an ear to the music. Both Bluetooth® and MP3 functions can be controlled from the steering wheel. Change lanes safely, change channels easily.



USB & AUX

No more gloveboxes or door pockets jammed with CD cases. Plug in your MP3 player and all your music is there to enjoy.



Bluetooth® connectivity with voice recognition* (Active & Style)

Get rid of leads and cables and link up your mobile phone with Bluetooth® for complete communications convenience.



* Contact your dealer for the latest list of compatible mobile phones.

INSIDE THE COMFORT ZONE

We have designed the ix20 to look after your every need. From its light and spacious ambience to its comfortable, high quality seating, this is a car that offers many ways to put you at your ease.

Drivers and passengers alike feel pampered by a whole range of thoughtful touches. Quality materials, intuitive

design and smart use of space all work seamlessly together so everyone can sit back, relax and simply enjoy the ride.



Panoramic sunroof (Style)

Everyone can relax and enjoy the passing scenery and all round view with the panoramic sunroof, creating a feeling of space and light. To open the front section simply press the overhead button to let the outside come flooding in.



Privacy glass (Style)

Adding to the styling of the ix20 whilst reducing the sun's rays and keeping the passengers more comfortable. Looking cool on the outside and keeping cooler on the inside.



Eco pattern speaker grille

Attention to detail, that's important. Bringing some of the outside to the ix20 inside.



Air conditioning

Fingertip control of your cabin environment with efficient air conditioning as standard on all ix20's. And not just the cabin, even the glovebox has a cooling facility, keeping your treats cool.



Electric windows

Front on the Classic and front and rear on the Active and Style (shown). All round convenience for everyone. With safety in mind it also includes an anti-trap mechanism and a window lock control on the Active and Style models.



Sliding and reclining rear seat

With ix20 it isn't just the driver, but all passengers that have adjustable seats. The rear 60:40 split seats can be independently adjusted for all round comfort and convenience.

LIGHTENING THE LOAD

Wherever you are going, whatever you are taking with you, the flexibly designed ix20 takes it in its stride. From packing your family's bags to go away on holiday or storing a mobile phone neatly, you'll find a simple and practical way to do it.

Seats that fold this way and that. Cubby holes and concealed compartments. Secure spaces for big things and small. All will help you adapt the car to your lifestyle – no matter how often it may change.



Seat configuration 1

One driver, four passengers and plenty of space for everything you need for the perfect family day out.



Seat configuration 2

Two adults in the front, two children in the back and the kids bikes safely stowed for an afternoon in the park.



Seat configuration 3

You two and the oldest off to university... with all their stuff!



Seat configuration 4

You're turning your ix20 in to a bit of a work horse now. From bags of compost to a 50" TV. The definition of flexible.



Luggage hooks

This very simple idea works so well and keeps everything where you put it.



Adjustable boot floor

With the option to have a flat load space or remove the floor to create even more space. It's so much easier to pack the ix20, whatever the load.



12V Power outlets – front and boot

Instant power for everything from DVD players and phones to cool boxes and camping lights.



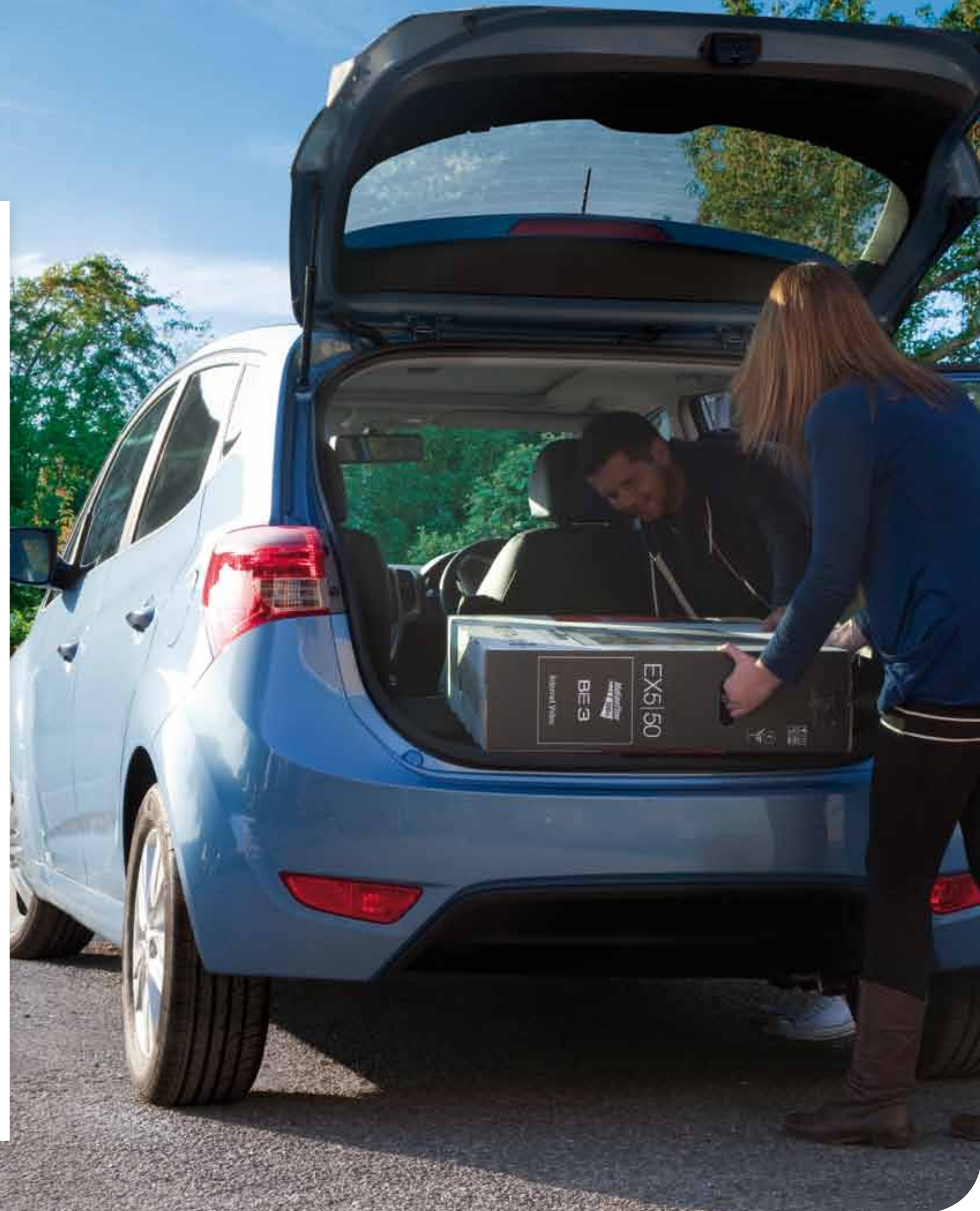
Cup holders

Place that well deserved drink securely in one of the ix20's cup holders.



Front seat back pockets

Not just for maps. Colouring books, novels, newspapers. Lots of things actually.



THE GOOD LIFE

We know you want a car that minimises CO₂ and fuel consumption, yet you still want performance and driving enjoyment. That's why we came up with Blue Drive technologies. This is our way of looking at every aspect of driving to make it easier on the pocket and environment.

The fluidic shape of the ix20 isn't just for show, it makes it more streamlined to reduce drag and improve fuel economy. While a range of high tech engines are optimised for greater efficiency. The ix20 is a new breed of efficient people mover, one that demonstrates Hyundai's future thinking.



Intelligent Stop & Go technology (ISG) (manual models only)

Simply sitting at traffic lights or in traffic jams uses a lot of fuel. In these situations the Intelligent Stop and Go technology (ISG), automatically stops the engine and re-starts the second you press down on the clutch. You'll hardly notice it but with up to 15% fuel saved you will notice the difference in your pocket.



Diesel Particulate Filter (DPF)

This clever device virtually eliminates smoke and substantially reduces emissions.



Eco drive indicator (manual models only)

A dash display showing you the best time to change gear for more fuel efficient driving.



Low rolling resistance tyres

The principal is simple: Less effort means less energy so reducing fuel consumption, but without compromising grip or safety.



Electric power assisted steering

Tight parking spaces and slower driving speeds are easy to manoeuvre. The electric power assisted steering system is quieter, lighter and also saves energy and reduces emissions.

OUT OF HARM'S WAY



The Hyundai ix20 has it all – style, space, efficiency, versatility... but underpinning it all is our no compromise attitude to safety. The ix20 has extremely high levels of active and passive protection systems as standard. This commitment to safety has seen the ix20 awarded

a 5 star EURO NCAP safety rating. It means that everyone who travels in the ix20 can enjoy everything it has to offer with total peace of mind, knowing the full range of safety features will look after you in every way.



Hill-start Assist Control (HAC)

HAC stops the car rolling back for the first moments of a hill start, up or down hill by automatically maintaining brake pressure.



Reversing sensors (Active & Style)

Extra help when parking in those tight spaces or reversing in the dark. An audible signal indicates the distance from any object behind the car when reversing.



Airbags

You can't see the six airbag system (which includes front, front side and full length curtain airbags) but it's there, quietly and reassuringly protecting passengers and driver alike.



Active front head restraints

Simple and very effective technology fitted to the front seat headrests to reduce the effects of whiplash in a collision.



Seatbelt reminders

Just in case someone forgets, and that includes the passengers in the back. A console warning light indicates any unfastened seatbelt position.



Front seatbelt pre-tensioners

Seatbelt pre-tensioners use sensors that detect an impact and immediately tighten the seatbelt reducing forward motion of the occupant.



Electronic Stability Programme (ESP) and Anti-lock Brakes (ABS)

These fully automatic, computer managed technologies help prevent skidding and allow for safer controlled braking.



ISOfix child seat anchorage points

Ensuring a child's safety in a car seat. Easy-to-use seat fixing points situated on the outer rear seats.



Safety cell

Even the very structure of the ix20 with its high tensile steel body shell offers maximum protection.



DECISIONS

DECISIONS...



CLASSIC


1.4 Blue Drive
1.4 CRDi Blue Drive

Classic offers the following features as standard:

- 15" Steel Wheels
- Air Conditioning
- Driver's Seat Height Adjustment
- Eco Drive Indicator*
- Electric Front Windows
- Electronic Stability Programme (ESP)
- Front, Front Side & Full Length Curtain Airbags
- Height & Reach Adjustable Steering Column
- Intelligent Stop & Go technology (ISG)*
- Remote Central Locking with Alarm
- USB and Aux Connections

5 Year Triple Care† which includes:

- 5 Year Unlimited Mileage Warranty
- 5 Year Roadside Assistance
- 5 Years of Annual Vehicle Health Checks



ACTIVE

1.4 Blue Drive
1.6 Auto
1.6 CRDi Blue Drive

Active offers the following additional features over Classic:

- 16" Alloy Wheels
- Bluetooth® Connectivity with Voice Recognition▲
- Body Coloured Door Handles with Chrome Inserts and Mirrors
- Eco Pattern Front Grille
- Electrically Adjustable and Heated Door Mirrors
- Electric Rear Windows
- Gloss Black and Alloy Effect Fascia Trim
- Leather Steering Wheel and Gear Knob
- One Touch Up and Down Driver's Window Control
- Reversing Sensors
- Steering Wheel Audio Controls

STYLE

1.4 Blue Drive
1.6 Auto
1.6 CRDi Blue Drive

Style offers the following additional features over Active:

- Electric Folding Door Mirrors with Integral Indicators
- Front Fog Lights
- Panoramic Sunroof (electric tilt and slide front / fixed rear)
- Privacy Glass (rear side and tailgate)



15" Steel Wheels



16" Alloy Wheels



16" Alloy Wheels

* Not available with automatic transmission.
† 5 Year Triple Care terms and exclusions apply. Please see www.hyundai.co.uk/owners/Triple5 or ask your local dealer for terms and exclusions.
▲ Contact your dealer for the latest list of compatible mobile phones.

COLOUR & TRIM



Ice Blue (Metallic)

Glowing Red (Metallic)

Sleek Silver (Metallic)



Steel Grey (Metallic)

Creamy White (Solid)

Phantom Black (Metallic)

CLASSIC



Alloy effect fascia trim



Black cloth with black and blue pattern detail

ACTIVE



Gloss black and alloy effect fascia trim



Black cloth incorporating eco pattern design

STYLE



Gloss black and alloy effect fascia trim



Black Cloth incorporating eco pattern design

BODY COLOUR

SOLID

Creamy White

METALLIC

Ice Blue

Glowing Red

Sleek Silver

Steel Grey

Phantom Black

Classic Active Style

• • •

• Standard Optional at extra cost

	Classic	Active	Style
ENGINE AND TRANSMISSION			
1.4 Blue Drive – 5 Speed Manual Transmission	•	•	•
1.6 – 4 Speed Automatic Transmission		•	•
1.4 CRDi Blue Drive – 6 Speed Manual Transmission	•		
1.6 CRDi Blue Drive – 6 Speed Manual Transmission		•	•
EXTERIOR			
15" Steel Wheels	•		
16" Alloy Wheels		•	•
Body Coloured Bumpers	•	•	•
Black Door Handles and Mirrors	•		
Body Coloured Door Handles with Chrome Inserts		•	•
Body Coloured Mirrors		•	•
Eco Pattern Front Grille		•	•
Rear Spoiler	•	•	•
Solid Paint	•	•	•
INTERIOR			
Alloy Effect Fascia Trim	•		
Driver's Seat with Fold-up Centre Armrest		•	•
Gloss Black and Alloy Effect Fascia Trim		•	•
Interior Light	•	•	•
Leather Gear Knob		•	•
Leather Steering Wheel		•	•
Luggage Compartment Light	•	•	•
Luggage Hooks	•	•	•
Luggage Net	•	•	•
Metallic Finish Interior Door Handles	•	•	•
Rear Centre Armrest	•	•	•
Under Floor Storage in Boot	•	•	•
SEATING			
Adjustable Head Restraints	•	•	•
Cloth Seat Trim	•	•	•
Driver's Seat Height Adjustment	•	•	•
Sliding and Reclining Rear Seat	•	•	•
Split Folding Rear Seats (60/40)	•	•	•
VENTILATION AND VISIBILITY			
Air Conditioning	•	•	•
Electric Headlight Beam Levelling	•	•	•
Front Fog Lights			•
Intermittent Front Windscreen Wipers	•	•	•
Panoramic Sunroof (electric tilt and slide front/fixed rear)			•
Privacy Glass (rear side and tailgate)			•
CONVENIENCE			
12V Power Outlets (front and boot)	•	•	•
Cigarette Lighter and Ashtray	•	•	•
Driver and Front Passenger Illuminated Sun Visor Vanity Mirrors		•	•
Electric Folding Door Mirrors with Integral Indicators			•
Electric Front Windows	•	•	•
Electric Heated Door Mirrors		•	•
Electric Rear Windows		•	•
Electric Power Assisted Steering	•	•	•
Front Door Pockets	•	•	•

	Classic	Active	Style
Rear Door Pockets		•	•
Front Cup Holders	•	•	•
Front Map Reading Lights		•	•
Front Seat Back Pockets	•	•	•
Glove Compartment with Cooling Function	•	•	•
Height and Reach Adjustable Steering Column	•	•	•
Illuminated Cigarette Lighter and Ashtray	•	•	•
Instrument Panel Brightness Control	•	•	•
One Touch Up and Down Driver's Window Control		•	•
Temporary Spare Wheel	•	•	•
Under Floor Storage Tray	•	•	•
TECHNOLOGY AND ENTERTAINMENT			
6 Speakers	•	•	•
Bluetooth® Connectivity with Voice Recognition▲		•	•
Eco Drive Indicator*	•	•	•
Intelligent Stop & Go (ISG)*	•	•	•
MP3 Functionality	•	•	•
Reversing Sensors		•	•
Steering Wheel Audio Controls		•	•
Stereo RDS Radio/CD Player with MP3 Compatibility	•	•	•
Trip Computer	•	•	•
USB and Aux Connections	•	•	•
SAFETY AND SECURITY			
Active Front Head Restraints	•	•	•
Anti-lock Brakes (ABS) with Electronic Brake-force Distribution (EBD)	•	•	•
Childproof Rear Door Locks	•	•	•
Deadlocks	•	•	•
Driver's Side Safety Window with Anti-trap Function		•	•
Electronic Stability Programme (ESP)	•	•	•
Front and Rear Seatbelt Reminders	•	•	•
Front Passenger Airbag De-activation Switch	•	•	•
Front Seatbelt Pre-tensioners	•	•	•
Front, Front Side and Full Length Curtain Airbags	•	•	•
Hill-start Assist Control (HAC)	•	•	•
Immobiliser	•	•	•
Locking Wheel Nuts		•	•
Rear ISOfix Child Seat Anchorage Points (outer rear seats only)	•	•	•
Remote Central Locking with Alarm	•	•	•
Speed Sensitive Automatic Door Locking**	•	•	•
CUSTOMER OPTIONS			
Metallic Paint	□	□	□
WARRANTY			
5 Year Triple Care† which includes:	•	•	•
5 Year Unlimited Mileage Warranty			
5 Year Roadside Assistance			
5 Years of Annual Vehicle Health Checks			
10 Years Anti-Perforation Warranty	•	•	•

• Standard □ Optional at extra cost

▲ Contact your dealer for compatible mobile phones.
 * Not available with automatic transmission
 ** Vehicle supplied with feature inactive. Please ask your dealer to enable this system if required.
 † 5 Year Triple Care terms and exclusions apply. Please see www.hyundai.co.uk/owners/Triple5 or ask your local dealer for full terms and conditions.

TECHNICAL DATA



	1.4 Petrol 5 Speed Manual	1.6 Petrol 4 Speed Automatic	1.4 CRDi Diesel 6 Speed Manual	1.6 CRDi Diesel 6 Speed Manual
ENGINE	EURO V	EURO V	EURO V	EURO V
Type	4 cylinder DOHC	4 cylinder DOHC	4 cylinder DOHC	4 cylinder DOHC
	16 valve	16 valve	16 valve	16 valve
Displacement (cc)	1396	1591	1396	1582
Bore & stroke (mm)	77.0 x 75.0	77.0 x 85.4	75.0 x 79.0	77.2 x 84.5
Compression ratio	10.5:1	10.5:1	17.0:1	17.3:1
Max power (kW/BHP)	66 / 89 @ 6000 rpm	92 / 123 @ 6300 rpm	66 / 89 @ 4000 rpm	85 / 115 @ 4000rpm
Torque (Nm/lbs ft)	137/101 @ 5000 rpm	156/115 @ 4200 rpm	220/162 @ 1750~2750 rpm	260/192 @ 1900~2750 rpm
0-62mph (seconds)	12.9	12.2	14.5	11.5
Top Speed (mph)	104	114	104	113
SUSPENSION				
Front	MacPherson strut type with gas shock absorber			
Rear	Coupled torsion beam axle with gas shock absorber			
STEERING				
System	Rack and pinion with electric power assistance			
Steering wheel lock to lock turns	2.77			
Minimum turning radius (metres)	5.2			
BRAKES				
System	ABS system with front and rear discs diagonally split			
Front	Disc			
Rear	Disc			
TYRES				
Classic	195/65 R15 (H)	-	195/65 R15 (H)	-
Active	205/55 R16 (H)	205/55 R16 (H)	-	205/55 R16 (H)
Style	205/55 R16 (H)	205/55 R16 (H)	-	205/55 R16 (H)
WHEELS				
Classic	Steel 6.0J x 15	-	Steel 6.0J x 15	-
Active	Alloy 6.0J x 16	Alloy 6.0J x 16	-	Alloy 6.0J x 16
Style	Alloy 6.0J x 16	Alloy 6.0J x 16	-	Alloy 6.0J x 16
DIMENSIONS - EXTERNAL				
Overall length (mm)	4,100	4,100	4,100	4,100
Overall width excl. door mirrors (mm)	1,765	1,765	1,765	1,765
Overall height (mm)	1,600	1,600	1,600	1,600
Wheelbase (mm)	2,615	2,615	2,615	2,615

		1.4 Petrol 5 Speed Manual	1.6 Petrol 4 Speed Automatic	1.4 CRDi Diesel 6 Speed Manual	1.6 CRDi Diesel 6 Speed Manual
Track - front (mm)	Classic	1,553	-	1,553	-
	Active	1,547	1,547	-	1,547
	Style	1,547	1,547	-	1,547
Track - rear (mm)	Classic	1,557	-	1,557	-
	Active	1,551	1,551	-	1,551
	Style	1,551	1,551	-	1,551
DIMENSIONS - INTERNAL					
Driver and front passenger	Leg room (mm)	1,080	1,080	1,080	1,080
	Head room (mm)	1,020	1,020	1,020	1,020
	Shoulder room (mm)	1,396	1,396	1,396	1,396
	Hip room (mm)	1,360	1,360	1,360	1,360
Rear passengers	Leg room (mm)	901	901	901	901
	Head room (mm)	980	980	980	980
	Shoulder room (mm)	1,370	1,370	1,370	1,370
	Hip room (mm)	1,326	1,326	1,326	1,326
WEIGHTS AND CAPACITIES					
Luggage capacity VDA (litres)		440	440	440	440
- seats up, to top of seat back					
Luggage capacity VDA (litres)		1,486	1,486	1,486	1,486
- seats down, to roof					
Kerb weight (kg)		1,268	1,294	1,370	1,380
Gross vehicle weight (kg)		1,710	1,730	1,800	1,810
Max tow weight (kg) - Braked		1,300	1,100	1,300	1,300
Max tow weight (kg) - Unbraked		550	550	550	550
Noseweight (kg)		75	75	75	75
Max roof weight (kg)		70	70	70	70
Fuel tank capacity (litres)		48	48	48	48
FUEL CONSUMPTION & EMISSIONS					
Urban mpg (l/100km)**		42.8 (6.6)	34.0 (8.3)	60.1 (4.7)	55.4 (5.1)
Extra urban mpg (l/100km)**		55.4 (5.1)	51.4 (5.5)	67.3 (4.2)	70.6 (4.0)
Combined mpg (l/100km)**		50.4 (5.6)	43.6 (6.5)	65.7 (4.3)	64.2 (4.4)
CO ₂ Emissions (g/km)*		130	154	114	117

* g/km = grammes of emitted substance per kilometre travelled. CO₂ = Carbon Dioxide
 ** The results given above do not express or imply any guarantee of fuel consumption of any model to which this brochure refers. The driver's style and road traffic conditions, as well as the extent to which the vehicle has been driven and the standard of maintenance, will affect its fuel consumption.

BUYING HYUNDAI

LOOK FORWARD TO THE ix20

The ix20 is the liberating alternative to the conventional, boxy compact MPV. It challenges the accepted rules with clever thinking, which is what we always do. From designing exceptional cars, our unique Triple Care Package, to financing the car of your dreams and taking care of you and your vehicle throughout your ownership experience. At Hyundai we're not happy unless you are. So you can trust us to get things right first time and just enjoy spending time doing what you want to. The ix20 – why spend life in a box?



The Motability scheme enables people who receive the Higher Rate Mobility Component of the Disability Living Allowance to acquire a Hyundai car at a preferential price.

In recognition of the needs of Motability customers, many Hyundai models can be ordered on the 3 year Contract Hire Scheme with features such as power assisted steering, automatic gearbox and height adjustable driver's seat as standard. Most of our dealers are Motability Accredited so please contact them for further information. If you wish to find out more about the Motability scheme, visit the Motability website at www.motability.co.uk.

HYUNDAI CAR FINANCIAL SERVICES

To help you drive your ideal Hyundai, we've put together some comprehensive Hyundai Car Financial Services products. The way they work is simple. There are a range of products available and we can offer finance between 1 and 5 years; so to find out more just contact your local dealer. They'll have all the details you need. You may be able to reduce your set monthly payments by deferring part of the cost to the end of your agreement with us. It's one way you can take advantage of our finance plans.

ASSET PROTECTION

When you're driving a Hyundai, we want you to be able to relax, content in the knowledge that everything else is taken care of. It's why we've created Return to Invoice GAP Insurance, which covers you in unexpected circumstances. Currently, if your vehicle is written off in an accident, fire or theft, your insurance may only pay the market value for it, not what you actually paid – so you'd have to cover the shortfall yourself. Return to Invoice GAP Insurance could cover the difference between your motor insurance settlement and the amount you originally paid for the vehicle, or the amount outstanding on finance - whichever is greater. Return to Invoice GAP insurance will complement your own vehicle insurance and provide the reassurance and financial support you need to get back on the road in a vehicle with the same value as your original choice.

Effective from 1 October 2011 Hyundai Car Financial Services is a division of Santander Consumer Finance, the leading Consumer Finance House in Europe. We provide finance for your Hyundai through your Hyundai dealer alongside a range of Santander insurance products. Finance subject to status. Terms and conditions apply. Applicants must be 18 or over. Guarantees/Indemnities may be required. Santander Consumer UK plc trading as Hyundai Car Financial Services. Registered office: 3 Princess Way, Redhill, Surrey, RH1 1SR Registered in England number 2248870

ENQUIRIES 0800 981 981
WWW.HYUNDAI.CO.UK

For the latest information on Hyundai or to book a test drive.

OWNING HYUNDAI

PEACE OF MIND AS STANDARD

5 Year Triple Care*

You can't put a price on five years' peace of mind. So we don't. The 5 Year Triple Care Package* is available as standard on every new Hyundai ix20 for miles of worry-free motoring.



- **Five Year Unlimited Mileage Warranty**
Fully manufacturer backed and unlimited mileage[▲]
- **Five Year Roadside Assistance**
24-hour roadside assistance anywhere in the UK or Channel Islands.
- **Five Years of Health Checks**
Your Hyundai dealer will carry out an annual vehicle key health check.

* 5 Year Triple Care terms and exclusions apply. Please see www.hyundai.co.uk/owners/Triple5 or ask your local dealer for full terms and conditions.
[▲] Vehicles for taxi or private hire uses are covered by a five year, 100,000 mile warranty.

Specifications shown in this brochure are based upon the latest available information at the time of printing.

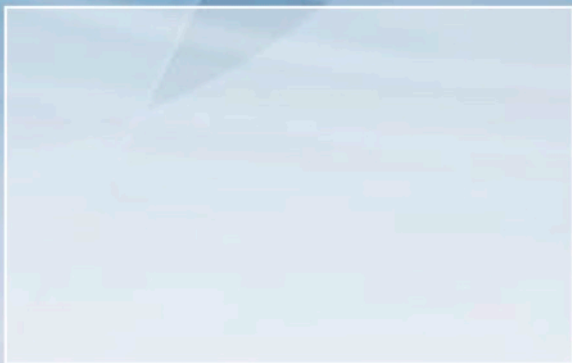
The colours and finishes reproduced in this brochure are subject to the limitations of the printing process and may vary from the actual colour and paint finish.

In line with our policy of continual product improvement Hyundai Motor UK Ltd reserves the right to make changes at any time, without notice, to prices, colours, material, design, shape, specifications and models, and to discontinue items.

For the latest details, please consult your Hyundai dealer.

Customer enquiries: **0800 981 981**

Your local Hyundai Dealer



Model featured on front cover:
Hyundai ix20 Style in Ice Blue Metallic Paint



HYUNDAI

NEW
THINKING.
NEW
POSSIBILITIES.

Hyundai Motor UK Ltd
728 London Road
High Wycombe, Bucks HP11 1HE
Tel: 01494 428600 Fax: 01494 428699

www.hyundai.co.uk

10/11 HB2435



This brochure is printed on FSC® certified paper produced from well managed forests and other controlled sources and can be disposed of by recycling, incineration for energy recovery, or is biodegradable.