



New i40

 NEW THINKING.  
**HYUNDAI** NEW POSSIBILITIES.



# NEW THINKING. NEW POSSIBILITIES.

---

At the heart of the Hyundai brand is the desire to think differently and challenge convention. This has led us to distribute cars in over 190 different countries across the world. Our forward thinking philosophy means we're always evolving our approach, to create cars that exceed your expectations. It means that every Hyundai has been engineered to surprise you with its built-in quality. To complement you with its crisply fluidic design. And to protect you, your family and your passengers with its strength. Prepare to enjoy a world of new possibilities.



New i40 exudes quality. Both the saloon and Tourer radiate elegant style, refined luxury and a host of cutting-edge technologies. Relaxing, spacious and enjoyable to drive, it belongs in a class of its own.





## Striking style makes the ultimate first impression.

Bold styling and distinctive curves create an aura of quiet confidence, which runs through i40's design. It carries itself with elegance and purpose - a car you'll always be proud to drive.

## Total sophistication

Fluidic styling brings subtle curves and sharp creases together, giving i40 a sense of dynamism. Its redesigned signature hexagonal grille is a striking centrepiece, which is enhanced by a variety of complementary features. LED daytime running lights add to its eye-catching appearance, while stylish new alloy wheel designs complete its sophisticated look. With stand-out features and a real presence, it's easy to imagine yourself behind the wheel.





## Enter true business class luxury.

Surround yourself with luxury from the moment you step inside. With fine fabrics, premium materials and a driver-oriented position, you'll feel comfortable and composed when you reach your destination.

### A place to relax

Elegant and luxurious with everything at your fingertips, i40's interior is a calming oasis away from the noise outside. Its premium materials result in a peaceful driving experience. High quality upholstery and soft finish surfaces are pleasing on the eye and easy to the touch, while the ergonomic layout places everything exactly where you need it. Leather seat facings on SE Nav Business and Premium models add an extra touch of refinement to your surroundings. Find the perfect temperature, thanks to air conditioning as standard, while SE Nav and above features dual zone climate control. SE Nav and above also arrives with cruise control with speed limiter for a relaxing drive, plus a 10 way electrical adjustable driver's seat to help you find your ideal driving position. Stay warm during those winter months thanks to a heated steering wheel and heated front seats, and stay cool and fresh during the summer with ventilated front seats on SE Nav Business and Premium. On the Premium model, you'll even get heated rear seats for your grateful passengers. New i40's well-appointed interior and quality finish lives up to all your expectations.

## Its versatile interior leaves no room for improvement.

New i40 provides accommodating space, perfect for long commutes or weekend trips away with the family. It's a luxurious sanctuary from the world outside.

## Stretch your legs

Travel in total comfort on every journey thanks to generous head, shoulder and leg room for 5 adults. If you've got luggage, rest assured that it's easier than you think thanks to rear seats that fold flat for simple loading. In fact, 1,719 litres of boot space (Tourer) and 525 litres (saloon) ensure there's plenty of room for every occasion, whether that's a business trip or a welcome getaway. With the smart electric tailgate on Tourer Premium models, the boot will open automatically when you stand behind the car — ideal when you've got your hands full. Once on the road, you'll enjoy the panoramic sunroof which floods the cabin with light, creating the illusion of extra space and giving your passengers a clear view of the world outside.



Car shown i40 saloon Premium. Car shown not to UK specification.



## Smooth and serene, with power in all the right places.

Welcome to a rare blend of relaxation and exhilaration. Its advanced engines and driving options make it a master of every type of journey.

### The joy of driving

Pick the engine option that's perfect for you. A 1.7 CRDi 115PS Blue Drive diesel engine is available with manual transmission, ideal for the driving purist. Alternatively, opt for a potent 141PS engine which comes with either a 6-speed manual or new 7-speed Dual Clutch Transmission (DCT) for lightning fast gear changes and the perfect blend of power and efficiency. Tailor your drive thanks to an advanced Drive Mode selection, where Normal mode helps you negotiate the city with light, agile steering and Sport mode will add an extra thrill to your drive. On i40's with Dual Clutch Transmission, you'll also be able to access Eco mode, for even better fuel economy. No matter how you adapt your experience, you can always rely on a smooth and rewarding drive.



# In a technologically advanced world, i40 helps you move with the times.

Thoughtful and innovative features take care of everything. Nothing should detract from your experience which is why i40 is equipped with clever technology to make life easier.

## The perfect commute

Keyless entry with engine start/stop on SE Nav Business and above will ensure you start each journey quickly and easily without fumbling around for keys. Stay connected thanks to Bluetooth® connectivity with voice recognition and enjoy DAB Digital radio on SE Nav upwards — giving you crystal clear sound quality at all times. Satellite navigation with Traffic Messaging Channel will guide you to your destination in double-quick time, and if there happens to be a delay on your route you'll be diverted so there's no need to miss a meeting. When you do come to a stop, park with confidence and ease thanks to the parking sensors and rear view parking camera, guiding you into the tightest of gaps with minimum fuss. It all means that by the time you arrive at your destination you'll be ready to tackle the day.



Car shown i40 Tourer Premium with optional Visibility Pack in Phantom Black pearl paint.



## Fuel-saving economy, without compromising your drive.

Controlled economy comes as standard, while extra fast efficient gear changes will boost your experience. Fewer fuel stops mean there's more time to enjoy the open road.



### Blue Drive technologies

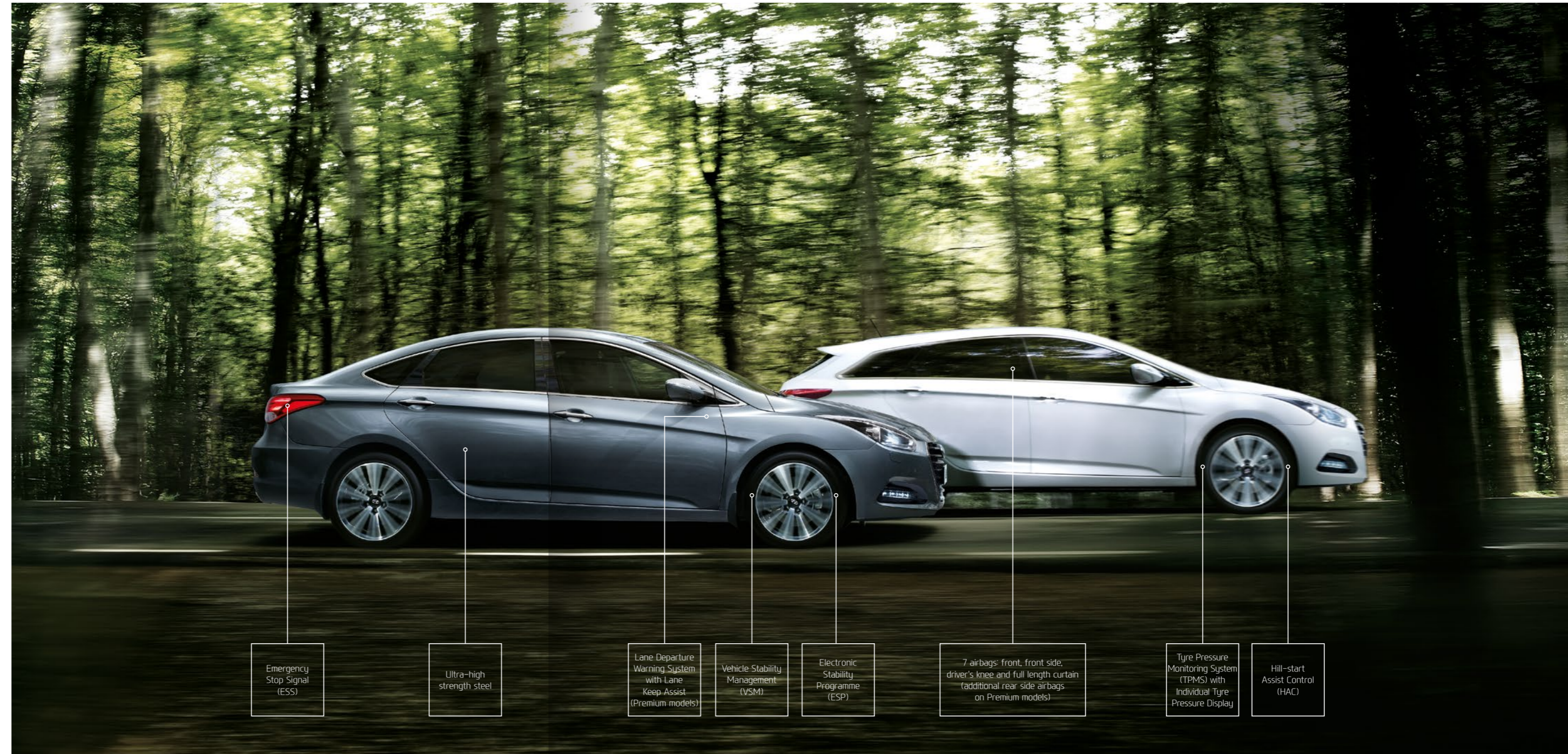
New i40 arrives with impressive fuel-saving capabilities. Intelligent Stop & Go on manual models turns off the engine when you come to a standstill before starting it again when you press down on the clutch, while on automatic models it engages the engine when you release the brake. Gear shift indicator lets you know the optimum time to switch gears, while dual clutch transmission is more efficient than a standard automatic transmission by allowing the next gear to be preselected in advance as you accelerate or decelerate, for ultra-fast changes. The result of these clever technologies is an output of up to 67.3 miles per gallon\* on the combined cycle on the 1.7 CRDi 115PS Blue Drive manual model, meaning you'll get Benefit In Kind taxation from 20% and Insurance Group from 13E. It all adds up to some impressive numbers, leaving you with more money to spend on the finer things in life.

# Total reassurance for you and your passengers.

New i40 is equipped with an abundance of features, including ones that'll keep you safe. In fact, we've gone above and beyond to ensure you can drive with peace of mind in all conditions.

## Our top priority

New i40 is constructed from advanced high-strength steel, with high performance special steel alloy applied to critical areas. Hopefully this won't be called in to action thanks to safety technologies such as the Lane Departure Warning System on Premium models, which alerts you if you veer off course. Automatic headlights come as standard and will assist you by coming on when visibility reduces, while the Tyre Pressure Monitoring System lets you know if your tyres are not at the optimum level, ensuring you can drive with maximum grip. Brake Assist applies the correct amount of braking force to bring your car to a stop in the shortest distance possible and Hill-start Assist ensures you won't roll backwards when you start on steep slopes. The Electronic Stability Programme senses if you're about to skid and applies the brakes to individual wheels to avoid it. If you do have an accident, there's another level of security in the form of up to 9 airbags in all the key areas for you and your passengers, or 7 on S, SE Nav and SE Nav Business models. In i40, you'll drive with confidence 100% of the time.



Cars shown i40 saloon Premium in Titanium Silver metallic paint and i40 Tourer Premium in Creamy White solid paint.



Cars shown i40 saloon Premium with optional Visibility Pack in Titanium Silver metallic paint and i40 Tourer Premium with optional Visibility Pack in Creamy White solid paint.



**S** An impressive array of features to keep you relaxed on every trip.

- 16" alloy wheels
- 6 speakers – 2 tweeters, 2 front door, 2 rear door
- 7 airbags – front, front side, driver's knee and full length curtain
- Adjustable intermittent front windscreen wipers with aero blade
- Air conditioning
- Automatic headlights with dusk sensor
- Bluetooth® connectivity with voice recognition
- Cloth seat trim
- Dash trim – black gloss
- Door mirrors – electric adjustment and heated
- Drive mode selection
- Driver's seat with manual height adjustment and electric lumbar support
- Electric parking brake with automatic hold function
- Electric windows – front and rear with anti-trap mechanism for all windows and one touch controls
- Exterior door handles – body coloured
- Intelligent Stop & Go (ISG)
- Leather wrapped steering wheel and gear knob
- Projection headlights with LED daytime running lights
- Radiator grille – black matt finish
- Remote central locking with alarm
- Steering wheel audio and phone controls
- Stereo RDS radio/CD player with MP3/WMA compatibility
- Tyre Pressure Monitoring System (TPMS) with individual tyre pressure display
- USB & aux connections
- Window surrounds – chrome effect

### Tourer FEATURES OVER SALOON

- Retractable load cover
- Silver coloured roof rails



16" alloy wheels shown

**SE Nav** Packed with extra features to enhance your driving experience.

SE NAV OFFERS THE FOLLOWING FEATURES OVER S:

- 17" alloy wheels (1.7 CRDi 141PS DCT Blue Drive only)
- Automatic dimming rear view mirror
- Automatic windscreen wipers with rain sensor
- Climate control – dual zone with auto de-fog system for front windscreen
- Cruise control with speed limiter
- DAB radio
- Door mirrors – electric adjustment and heated with power folding
- Door sill – stainless steel
- Driver's seat with electric adjustment and lumbar support
- Exterior door handles – body coloured with chrome inserts
- Front passenger's seat with manual height adjustment
- Front windscreen wiper de-icer
- Heated front seats
- Heated steering wheel
- Interior door handles – chrome effect
- LED fog lights – front
- Parking sensors – front and rear (acoustic only)
- Privacy glass
- Solar glass with sunshade band
- Touchscreen satellite navigation system with rear view parking camera and parking guidance system

### Tourer FEATURES OVER SALOON

- Rear seat – easy folding system
- Retractable load cover
- Silver coloured roof rails



**SE Nav Business** The perfect commute, with an abundance of features at your fingertips.

SE NAV BUSINESS OFFERS THE FOLLOWING FEATURES OVER SE NAV:

- Driver's seat with memory function
- Front passenger's seat with electric adjustment and lumbar support
- Keyless entry with engine start/stop button
- Leather seat trim (seat facings only)
- Parking sensors – front and rear (with instrument cluster display)
- Ventilated front seats

**Tourer** FEATURES OVER SALOON

- Rear seat – easy folding system
- Retractable load cover
- Silver coloured roof rails



**Premium** Supreme style and luxurious comfort for the ultimate driving experience.

PREMIUM OFFERS THE FOLLOWING FEATURES OVER SE NAV BUSINESS:

- 18" alloy wheels
- 9 airbags – front, front side, rear side, driver's knee and full length curtain
- Alloy pedals
- Heated rear seats (outer rear seat bases only)
- Lane departure warning system with lane keep assist
- LED brake light – high mounted
- Luggage net
- Panoramic sunroof – electric tilt and slide
- Radiator grille – black with chrome inserts
- Rear electric window blind – saloon only
- Satin chrome effect door frame and beltline moulding
- Supervision instrument cluster with LCD colour display

**Tourer** FEATURES OVER SALOON

- Luggage floor rail system
- Rear seat – easy folding system
- Retractable load cover
- Silver coloured roof rails
- Smart electric tailgate



Creamy White – Solid



Sleek Silver – Metallic



Titanium Silver – Metallic



Blue Spirit – Pearl



Phantom Black – Pearl



Red Merlot – Pearl

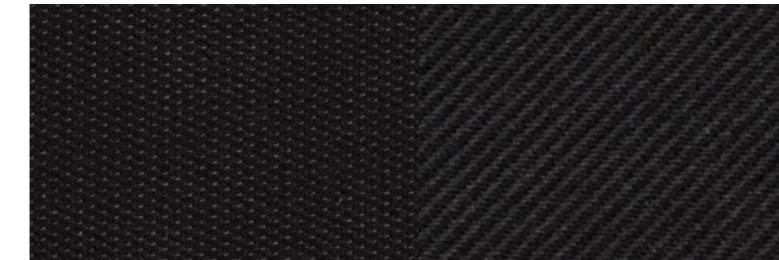
## Visibility Pack

Visibility Pack is optional on Premium models and includes a host of innovations to make driving even easier. Speed Sign Recognition ensures you're always aware of the limit, while you'll also benefit from Bi-Xenon Headlights, Auto Forward Levelling System and Smart High Beam. Clever features for maximum visibility.

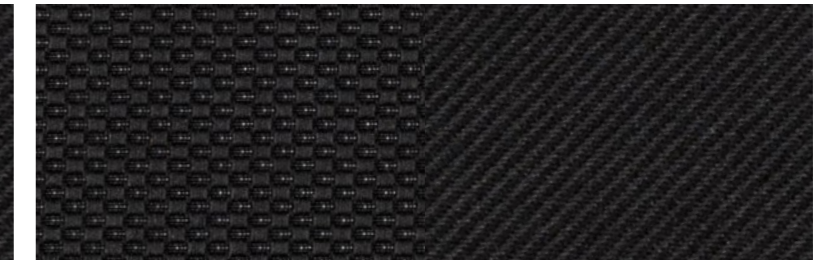


## Upholstery

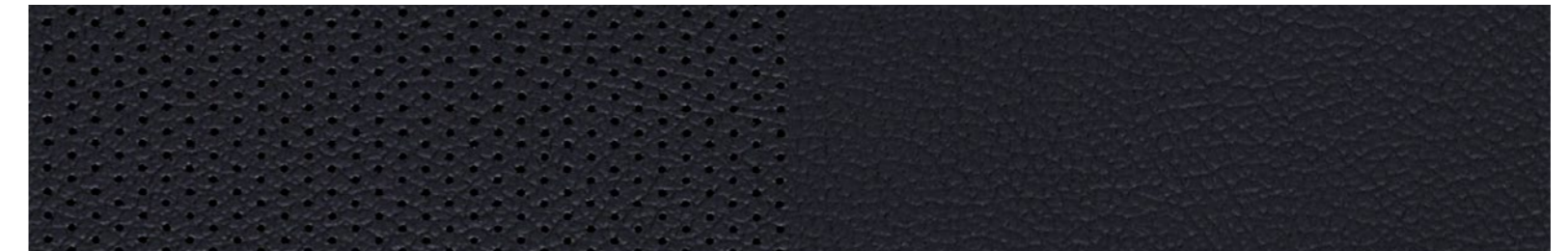
**SALOON – BLACK CLOTH** S & SE NAV MODELS



**TOURER – BLACK CLOTH** S & SE NAV MODELS



**SALOON & TOURER – BLACK LEATHER (SEAT FACINGS ONLY)** SE NAV BUSINESS & PREMIUM MODELS





Roof rack



Bumper protector - Tourer only



Ice and sun screen



Reversible boot mat - Tourer only



Dog guard - Tourer only



Mud guards



Bicycle carrier



Carpet mat set

## Add to your i40

There's a variety of Hyundai approved accessories that you can add. You might opt for a roof box for extra storage, or the reversible boot mat and carpet mat set that will keep the interior in perfect condition. Just read through our options, speak to your local Hyundai Dealer, or visit our website.

Roof box



	S	SE NAV	SE NAV BUSINESS	PREMIUM
<b>ENGINE AND TRANSMISSION</b>				
1.7 CRDi 115PS Blue Drive - 6 Speed Manual Transmission	●	●	●	-
1.7 CRDi 141PS Blue Drive - 6 Speed Manual Transmission	●	●	●	●
1.7 CRDi 141PS Blue Drive - 7 Speed Dual Clutch Transmission (DCT)	-	●	●	●
Intelligent Stop & Go (ISG)	●	●	●	●
<b>EXTERIOR</b>				
16" Alloy Wheels	●	-	-	-
16" Alloy Wheels - Manual Blue Drive only	-	●	●	-
17" Alloy Wheels - DCT Blue Drive only	-	●	●	-
18" Alloy Wheels	-	-	-	●
Door Mirrors with Integrated LED Indicators - Body Coloured	●	●	●	●
Exterior Door Handles - Body Coloured	●	-	-	-
Exterior Door Handles - Body Coloured with Chrome Inserts	-	●	●	●
LED Brake Light - High-mounted	-	-	-	●
Radiator Grille - Black Matt Finish	●	●	●	-
Radiator Grille - Black with Chrome Inserts	-	-	-	●
Rear Spoiler - Tourer only	●	●	●	●
Silver Coloured Roof Rails - Tourer only	●	●	●	●
Solid Paint	●	●	●	●
Window Surrounds - Chrome Effect	●	●	●	-
Window Surrounds - Satin Chrome Effect with Beltline Moulding	-	-	-	●
<b>INTERIOR</b>				
Alloy Pedals	-	-	-	●
Dash Trim - Black Gloss	●	-	-	-
Dash Trim - Brushed Chrome Effect	-	●	●	●
Door Sill - Stainless Steel	-	●	●	●
Heated Steering Wheel	-	●	●	●
Interior Door Handles - Chrome Effect	-	●	●	●
Interior Light - Front, Rear and Luggage Compartment	●	●	●	●
Leather Wrapped Steering Wheel and Gear Knob	●	●	●	●
<b>SEATING</b>				
Cloth Seat Trim	●	●	-	-
Driver's Seat with Electric Adjustment and Lumbar Support	-	●	●	●
Driver's Seat with Manual Height Adjustment and Electric Lumbar Support	●	-	-	-
Driver's Seat with Memory Function	-	-	●	●

	S	SE NAV	SE NAV BUSINESS	PREMIUM
Front Head Restraints - Vertical and Horizontal Adjustment	●	●	●	●
Front Passenger's Seat with Electric Adjustment and Lumbar Support	-	-	●	●
Front Passenger's Seat with Manual Height Adjustment	-	●	-	-
Heated Front Seats	-	●	●	●
Heated Rear Seats (outer rear seat bases only)	-	-	-	●
Leather Seat Trim (seat facings only)	-	-	●	●
Split Folding Rear Seats (60/40)	●	●	●	●
Ventilated Front Seats	-	-	●	●
<b>VENTILATION &amp; VISIBILITY</b>				
Adjustable Intermittent Front Windscreen Wipers with Aero Wiper Blade	●	●	●	●
Air Conditioning	●	-	-	-
Automatic Dimming Rear View Mirror	-	●	●	●
Automatic Headlights with Dusk Sensor	●	●	●	●
Automatic Windscreen Wipers with Rain Sensor	-	●	●	●
Climate Control - Dual Zone with Auto De-fog System for Front Windscreen	-	●	●	●
Front Windscreen Wiper De-icer	-	●	●	●
Heated Rear Windscreen - saloon only	●	●	●	●
Heated Rear Windscreen with Washer and Wiper - Tourer only	●	●	●	●
LED Brake Lights	●	●	●	●
LED Fog Lights - Front	-	●	●	●
Panoramic Sunroof - Electric Tilt and Slide	-	-	-	●
Privacy Glass	-	●	●	●
Projection Headlights with LED Daytime Running Lights	●	●	●	●
Rear Air Vents in Centre Console	●	●	●	●
Rear Electric Window Blind - saloon only	-	-	-	●
Solar Glass with Sunshade Band	-	●	●	●
Tinted Glass with Sunshade Band	●	-	-	-
Welcome and Follow-me-home Headlight Function	●	●	●	●
<b>CONVENIENCE</b>				
12V Power Outlet in Front and Rear Console	●	●	●	●
Armrest- Front with Storage	●	●	●	●
Armrest- Rear with Cup Holder	●	●	●	●
Bottle Holders - Front Centre Console, Front and Rear Door	●	●	●	●
Courtesy Light - Front Door	●	●	●	●



	S	SE NAV	SE NAV BUSINESS	PREMIUM
Cruise Control with Speed Limiter	-	●	●	●
Door Mirrors – Electric Adjustment and Heated	●	●	●	●
Door Mirrors – Electric Adjustment and Heated with Power Folding	-	●	●	●
Electric Windows – Front and Rear with Anti-Trap Mechanism for All Windows and One Touch Controls	●	●	●	●
Front Seat Back Pockets – Driver and Passenger Seat	●	●	●	●
Glove Compartment with Illumination and Lock	●	●	●	●
Luggage Net	-	-	-	●
One-touch Indicators	●	●	●	●
Power Assisted Steering	●	●	●	●
Rear Seat – Easy Folding System – Tourer only	-	●	●	●
Retractable Load Cover – Tourer only	●	●	●	●
Smart Electric Tailgate – Tourer only	-	-	-	●
Spare Wheel – Emergency Space Saver	●	●	●	●
Steering Column – Height and Reach Adjustable	●	●	●	●
Sun Visors with Vanity Mirrors and Illumination	●	●	●	●
<b>TECHNOLOGY &amp; ENTERTAINMENT</b>				
6 Speakers – 2 Tweeters, 2 Front Door, 2 Rear Door	●	-	-	-
Bluetooth® Connectivity with Voice Recognition*	●	●	●	●
DAB Radio	-	●	●	●
Drive Mode Selection	●	●	●	●
Gear Shift Indicator – Manual only	●	●	●	●
Parking Sensors – Front and Rear (acoustic only)	-	●	-	-
Parking Sensors – Front and Rear (with instrument cluster display)	-	-	●	●
Steering Wheel Audio and Phone Controls	●	●	●	●
Stereo RDS Radio/CD Player with MP3/WMA Compatibility	●	●	●	●
Supervision Instrument Cluster with LCD Colour Display	-	-	-	●
Touchscreen Satellite Navigation with Rear View Parking Camera, Parking Guidance System and MapCare	-	●	●	●
Trip Computer	●	●	●	●
USB and Aux Connections	●	●	●	●
<b>SAFETY &amp; SECURITY</b>				
7 Airbags – Front, Front Side, Driver's Knee and Full Length Curtain	●	●	●	-
9 Airbags – Front, Front Side, Rear Side, Driver's Knee and Full Length Curtain	-	-	-	●
Active Head Restraints – Front	●	●	●	●

	S	SE NAV	SE NAV BUSINESS	PREMIUM
Anti-lock Brake System (ABS) with Electronic Brake force Distribution (EBD)	●	●	●	●
Brake Assist System (BAS)	●	●	●	●
Childproof Rear Door Locks	●	●	●	●
Deadlocks	●	●	●	●
Electric Parking Brake with Automatic Hold Function	●	●	●	●
Electronic Stability Programme (ESP)	●	●	●	●
Emergency Stop Signal (ESS)	●	●	●	●
Front Seatbelt Pre-tensioners	●	●	●	●
Height Adjustable Front Seatbelts	●	●	●	●
Hill-start Assist Control (HAC)	●	●	●	●
Immobiliser	●	●	●	●
ISOfix Child Seat Anchorage Points – Rear (outer seats only)	●	●	●	●
Keyless Entry with Engine Start/Stop Button	-	-	●	●
Lane Departure Warning System with Lane Keep Assist	-	-	-	●
Locking Wheel Nuts	●	●	●	●
Passenger Airbag De-activation Switch	●	●	●	●
Remote Central Locking with Alarm	●	●	●	●
Seatbelt Reminder	●	●	●	●
Speed Sensitive Automatic Door Locking	●	●	●	●
Tyre Pressure Monitoring System (TPMS) with Individual Tyre Pressure Display	●	●	●	●
Vehicle Stability Management (VSM)	●	●	●	●
<b>CUSTOMER OPTIONS</b>				
Metallic / Pearl Paint	○	○	○	○
Visibility Pack: Bi-Xenon Headlights, AFLS, Headlight Washers, Smart High Beam, Speed Sign Recognition	-	-	-	○
<b>WARRANTY†</b>				
• 5 Year Unlimited Mileage Warranty • 5 Year Roadside Assistance • 5 Years of Annual Vehicle Health Checks	●	●	●	●
10 Years' Anti-Perforation Warranty	●	●	●	●

● Standard ○ Optional at extra cost

\* Please contact your dealer for the latest list of compatible phones.

† 5 Year Unlimited Mileage Warranty terms and exclusions apply. Please see www.hyundai.co.uk or ask your local dealer for full terms and exclusions.

	1.7 CRDi 115PS Blue Drive 6 Speed Manual	1.7 CRDi 141PS Blue Drive 6 Speed Manual	1.7 CRDi 141PS Blue Drive 7 Speed Dual Clutch Transmission (DCT)
<b>ENGINE</b>			
Euro status	Euro VI	Euro VI	Euro VI
Type	4 cylinder DOHC	4 cylinder DOHC	4 cylinder DOHC
Displacement (cc)	1,685	1,685	1,685
Bore & stroke (mm)	77.2 X 90	77.2 X 90	77.2 X 90
Compression ratio	15.7:1	15.7:1	15.7:1
Max power kW/PS	85 / 115 @ 4,000 rpm	104 / 141 @ 4,000 rpm	104 / 141 @ 4,000 rpm
Torque (Nm/lbs ft)	280 / 206 @ 1,250–2,500	340 / 251 @ 1,700–2,500	340 / 251 @ 1,700–2,500
0–62mph (seconds)	S 12.4 T 12.6	S 10.3 T 10.5	S 10.8 T 11.0
Top speed (mph)	S 119 T 118	S 126 T 124	S 126 T 124
<b>SUSPENSION</b>			
Front	MacPherson strut with coil spring		
Rear	Multi-link type with anti-roll stabiliser bar		
<b>STEERING</b>			
System	Rack and pinion with electric motor assistance		
Steering wheel lock to lock turns	2.88		
Turning circle (metres)	10.94		
<b>BRAKES</b>			
System	Anti-lock Brake System (ABS) with diagonally split front and rear discs		
Front	Disc		
Rear	Disc		
<b>TYRES</b>			
S	205/60 R16	205/60 R16	-
SE NAV	205/60 R16	205/60 R16	215/50 R17
SE NAV BUSINESS	205/60 R16	205/60 R16	215/50 R17
PREMIUM	-	225/45 R18	225/45 R18
<b>WHEELS</b>			
S	Alloy 7.0J x 16	Alloy 7.0J x 16	-
SE NAV	Alloy 7.0J x 16	Alloy 7.0J x 16	Alloy 7.5J x 17
SE NAV BUSINESS	Alloy 7.0J x 16	Alloy 7.0J x 16	Alloy 7.5J x 17
PREMIUM	-	Alloy 8.0J x 18	Alloy 8.0J x 18

	1.7 CRDi 115PS Blue Drive 6 Speed Manual	1.7 CRDi 141PS Blue Drive 6 Speed Manual	1.7 CRDi 141PS Blue Drive 7 Speed Dual Clutch Transmission (DCT)
<b>DIMENSIONS</b>			
Overall length (mm)	S 4,745 T 4,775		
Overall width (mm)	1,815		
Overall height (mm)	1,470		
Wheelbase (mm)	2,770		
Track - front (mm)	S	1,591	1,591
	SE NAV	1,591	1,591
	SE NAV BUSINESS	1,591	1,591
	PREMIUM	-	1,579
Track - rear (mm)	S	1,597	1,597
	SE NAV	1,597	1,597
	SE NAV BUSINESS	1,597	1,597
	PREMIUM	-	1,585
<b>WEIGHTS &amp; CAPACITIES</b>			
Luggage capacity VDA (litres) - seats up	S 525 T 553		
Luggage capacity VDA (litres) - seats down	S - T 1,719		
Kerb weight (kg)	S 1,601 T 1,638	S 1,610 T 1,648	S 1,620 T 1,659
Gross vehicle weight (kg)	S 2,090 T 2,130	S 2,090 T 2,130	S 2,100 T 2,150
Max tow weight (kg) - Braked	1,500	1,800	1,500
Max tow weight (kg) - Unbraked		700	
Posweight (kg)	80	80	70
Max roof weight (kg)	80	80	70
Fuel tank capacity (litres)	70		
<b>FUEL CONSUMPTION &amp; EMISSIONS - S</b>			
Urban mpg (l/100km)*	57.6 (4.9)	58.9 (4.8)	-
Extra urban mpg (l/100km)*	74.3 (3.8)	68.9 (4.1)	-
Combined mpg (l/100km)*	67.3 (4.2)	65.7 (4.3)	-
CO2 Emissions (g/km†)	110	114	-
<b>FUEL CONSUMPTION &amp; EMISSIONS - SE NAV</b>			
Urban mpg (l/100km)*	57.6 (4.9)	58.9 (4.8)	50.4 (5.6)
Extra urban mpg (l/100km)*	74.3 (3.8)	68.9 (4.1)	61.4 (4.6)
Combined mpg (l/100km)*	67.3 (4.2)	65.7 (4.3)	56.5 (5.0)
CO2 Emissions (g/km†)	110	114	129

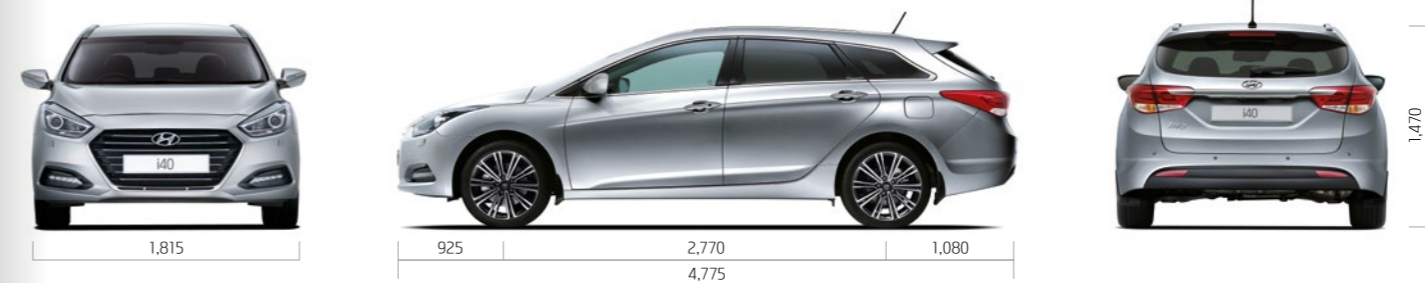
	1.7 CRDi 115PS Blue Drive 6 Speed Manual	1.7 CRDi 141PS Blue Drive 6 Speed Manual	1.7 CRDi 141PS Blue Drive 7 Speed Dual Clutch Transmission (DCT)
<b>FUEL CONSUMPTION &amp; EMISSIONS - SE NAV BUSINESS</b>			
Urban mpg (l/100km)*	57.6 (4.9)	58.9 (4.8)	50.4 (5.6)
Extra urban mpg (l/100km)*	74.3 (3.8)	68.9 (4.1)	61.4 (4.6)
Combined mpg (l/100km)*	67.3 (4.2)	65.7 (4.3)	56.5 (5.0)
CO2 Emissions (g/km†)	110	114	129
<b>FUEL CONSUMPTION &amp; EMISSIONS - PREMIUM</b>			
Urban mpg (l/100km)*	-	54.3 (5.2)	50.4 (5.6)
Extra urban mpg (l/100km)*	-	64.2 (4.4)	61.4 (4.6)
Combined mpg (l/100km)*	-	60.1 (4.7)	56.5 (5.0)
CO2 Emissions (g/km†)	-	123	129

S Saloon T Tourer

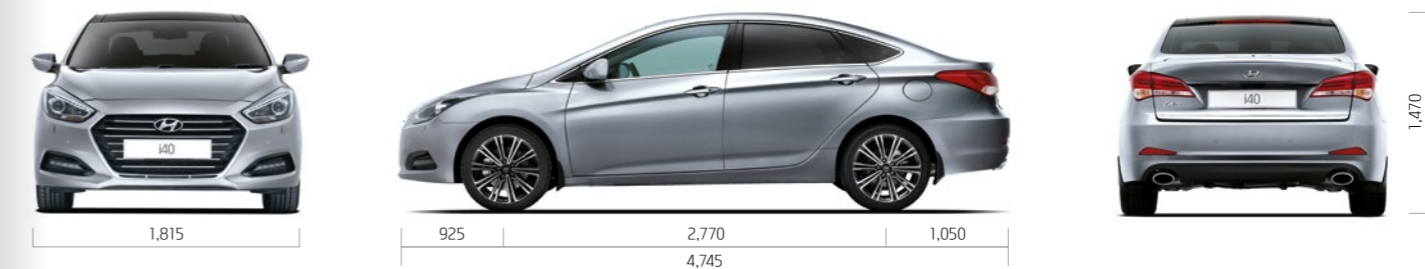
\* The results given above do not express or imply any guarantee of fuel consumption of any model to which this brochure refers. The driver's style and road traffic conditions, as well as the extent to which the vehicle has been driven and the standard of maintenance, will affect its fuel consumption.

† g/km = grams of emitted substance per kilometre travelled. CO<sub>2</sub> = Carbon Dioxide

## DIMENSIONS - TOURER



## DIMENSIONS - SALOON



Unit : mm



## Hyundai Motor Finance

Hyundai Motor Finance provides a range of products to make the purchase of your Hyundai even more accessible. To meet your requirements our plans are simple but offer you the same quality and flexibility as your new Hyundai. Applying for a finance plan through your local Hyundai dealer is easy and they will support you in choosing the right plan for your needs.

As a customer your satisfaction is at the heart of our business, and whilst you are able to manage your account online, we are only a phone call away should you require any help or assistance. We offer two main products to assist in your car purchase:

### CONDITIONAL SALE

Conditional Sale is a simple and traditional way to finance your car over a fixed period. You decide to fund the entire purchase price or put down a deposit and as your interest rate is fixed you'll pay the same amount each month. After all repayments have been made you'll own the car.

### PERSONAL CONTRACT PURCHASE (PCP)

Personal Contract Purchase could make it easier for you to get behind the wheel of your Hyundai, it may also help you to change your car on a more regular basis.

The way it works is simple, you decide what level of deposit to pay. From nil, up to a maximum of 40%. You also decide your repayment period (typically 25 or 37 months) and set your anticipated annual mileage. This will determine your optional final payment.

You will then make fixed monthly repayments based on the outstanding balance and interest, less your optional final payment, and at the end of your monthly repayment period you will have three choices: return, retain or renew.

**RETURN:** you can hand the car back to us, with nothing further to pay (subject to fair wear and tear, and/or excess mileage charges may apply).

**RETAIN:** you can pay the optional final payment and the car is yours.

**RENEW:** you can part exchange the car, using any equity over and above the optional final payment as deposit on your next car (equity is anticipated, but this cannot be guaranteed).

\* You will not own the vehicle until all payments are made. T&Cs apply. Finance subject to status. Applicants must be 18 or over. Guarantee/Indemnity may be required. Hyundai Motor Finance, RH1 1SR



## 5 Year Unlimited Mileage Warranty

The passion and belief we have in the quality of our products mean we can offer an aftercare package to match. Visit your local Hyundai Authorised Repairer and we'll attend to you straight away, giving you a fully-inclusive quote for the work you've requested.

Only Hyundai Trained Technicians will carry out this work, and we'll also check for any software updates to keep your car running smoothly. You can also be sure that we'll only use Hyundai Genuine Parts which have been thoroughly tested and approved. On collection, we'll explain your invoice and call you within 3 days of your appointment to check you're completely satisfied.

As the people who know your car best, the quality of our service is second to none.

### 5 YEAR UNLIMITED MILEAGE WARRANTY

A manufacturer backed, unlimited mileage, 5 Year Warranty\* protects your Hyundai against manufacturing defects\*\* and is fully transferable to the next owner.

### 5 YEAR ROADSIDE ASSISTANCE

24 hour roadside assistance should you ever need it, anywhere in the UK or Channel Islands.

### 5 YEAR ANNUAL VEHICLE HEALTH CHECKS

A free, expert visual inspection by your Hyundai dealer on key areas of your car, to help sort any problems and ensure trouble-free motoring.

### ADDITIONAL AFTERCARE

A 10 year Anti-perforation warranty against perforation of the bodywork, from the inside of the panel outwards.

\* 5 Year Unlimited Mileage Warranty terms and exclusions apply. Please see [www.hyundai.co.uk](http://www.hyundai.co.uk) or ask your local dealer for full terms and exclusions.

\*\* Vehicles used for taxi or private hire are covered by a 5 year, 100,000 mile warranty. Cover excludes fair wear and tear.



## Motability Plans

The Motability plan will enable some of you to purchase a Hyundai at a preferential rate. If you receive the Higher Rate Mobility Component of the Disability Living Allowance, you're entitled to access this excellent scheme. In recognition of your requirements, many Hyundai models can be ordered on the 3 year Contract Hire Scheme.

You'll benefit from advantageous features like power steering, height-adjustable driver's seat and automatic gearbox, which all come as standard.

Most of our dealers are Motability Accredited, so just contact them and they'll be happy to help. If you'd like to read about the scheme in more depth, simply visit [www.motability.co.uk](http://www.motability.co.uk)



## Ownership

We're always thinking about how to make owning a Hyundai an enjoyable experience and that's exactly what you get with a Hyundai Fixed Price Service Plan. As a valued customer, we'll take care of all your Hyundai's scheduled servicing for up to 5 years or 50,000 miles.

Being covered by a Hyundai Fixed Price Service Plan means:

- Your Hyundai's servicing is covered in a single payment that can be included in your finance agreement
- You have a choice to cover your servicing for 3 or 5 years\*
- Only trained Technicians will expertly assess and service your Hyundai
- Should any parts need replacing during your servicing, your Hyundai will be fitted with Hyundai Genuine Parts

For more information, simply contact your local Hyundai dealer or our Customer Services team, who will be happy to help.

\* Price varies according to model, fuel type and mileage. Only available on vehicles registered on or after 1st March 2013. Price includes VAT where applicable. Time and mileage restrictions apply. Excludes seasonal checks. Terms and conditions apply.



## MyHyundai

MyHyundai is a complimentary and exclusive owners' club with a variety of unique benefits that'll make your ownership experience even more enjoyable.

As well as amazing offers that range from incredible getaways to indulgent gifts, you'll also be able to set your own alerts and preferences, while storing all your car's details in one, easily-accessible place.



## Staying In Touch

We're committed to offering you the very best. That means, as well as delivering impressive cars, we'll also deliver helpful advice and service, every step of the way. Simply contact us on **0800 981 981** or visit our website at [www.hyundai.co.uk](http://www.hyundai.co.uk)



Keep up to date with our news on our Facebook page at [www.facebook.com/hyundaiuk](http://www.facebook.com/hyundaiuk)



See all our latest tweets at [www.twitter.com/hyundai\\_uk](http://www.twitter.com/hyundai_uk)



View our latest videos at [www.youtube.com/user/hyundaimotoruk](http://www.youtube.com/user/hyundaimotoruk)

## NEW THINKING. NEW POSSIBILITIES.

At the heart of the Hyundai brand is the desire to think differently and challenge convention. This has led us to distribute cars in over 190 different countries across the world. Our forward thinking philosophy means we're always evolving our approach, to create cars that exceed your expectations. It means that every Hyundai has been engineered to surprise you with its built-in quality. To complement you with its crisply fluidic design. And to protect you, your family and your passengers with its strength. Prepare to enjoy a world of new possibilities.



[www.facebook.com/hyundaiuk](http://www.facebook.com/hyundaiuk)



[www.twitter.com/hyundai\\_uk](http://www.twitter.com/hyundai_uk)

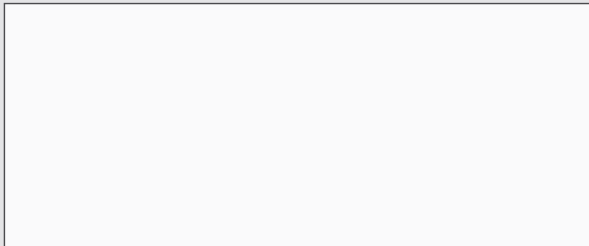


[www.youtube.com/user/hyundaimotoruk](http://www.youtube.com/user/hyundaimotoruk)

Specifications shown in this brochure are based upon the latest available information at the time of printing. The colours and finishes reproduced in this brochure are subject to the limitations of the printing process and may vary from the actual colour and paint finish.

In line with our policy of continual product improvement Hyundai Motor UK Ltd reserves the right to make changes at any time, without notice, to prices, colours, material, design, shape, specifications and models, and to discontinue items. For the latest details, please consult your Hyundai dealer.

Your local Hyundai dealer:



This brochure is printed on FSC® (Forestry Stewardship Council) certified paper which has been produced at a mill and printed by a printer that has been certified to the ISO 14001 environmental standard using vegetable oil based inks and aqueous based coatings. It can be disposed of by recycling, incineration for recovery or is biodegradable.

Customer enquiries: 0800 981 981



Model shown on front cover:

i40 Tourer Premium in Titanium Silver metallic paint. 07/15 HB2470



Hyundai Motor UK Ltd

728 London Road, High Wycombe, Bucks HP11 1HE

T: 01494 428600 F: 01494 428699 [www.hyundai.co.uk](http://www.hyundai.co.uk)

# New i40 Price Guide & Model Details

---

# New i40 Price Guide

April 2016

Saloon	FUEL TYPE	CO <sub>2</sub> EMISSIONS G/KM	INSURANCE GROUP (1-50)	VED BAND	BASIC RETAIL PRICE	VAT	RETAIL PRICE	RECOMMENDED ON THE ROAD PRICE	P11D VALUE	BIK TAX %
<b>S</b>										
1.7 CRDi 115PS Blue Drive	D	110	13E	B	15,880.00	3,176.00	19,056.00	19,695.00	19,640.00	22
1.7 CRDi 141PS Blue Drive	D	114	18A	C	16,546.67	3,309.33	19,856.00	20,495.00	20,440.00	22
<b>SE Nav</b>										
1.7 CRDi 115PS Blue Drive	D	110	13E	B	17,546.67	3,509.33	21,056.00	21,695.00	21,640.00	22
1.7 CRDi 141PS Blue Drive	D	114	19A	C	18,213.33	3,642.67	21,856.00	22,495.00	22,440.00	22
1.7 CRDi 141PS Blue Drive DCT	D	129	19A	D	19,796.67	3,959.33	23,756.00	24,395.00	24,340.00	25
<b>SE Nav Business</b>										
1.7 CRDi 115PS Blue Drive	D	110	14E	B	18,796.67	3,759.33	22,556.00	23,195.00	23,140.00	22
1.7 CRDi 141PS Blue Drive	D	114	19A	C	19,463.33	3,892.67	23,356.00	23,995.00	23,940.00	22
1.7 CRDi 141PS Blue Drive DCT	D	129	19A	D	21,046.67	4,209.33	25,256.00	25,895.00	25,840.00	25
<b>Premium</b>										
1.7 CRDi 141PS Blue Drive	D	123	20A	D	20,880.00	4,176.00	25,056.00	25,695.00	25,640.00	24
1.7 CRDi 141PS Blue Drive DCT	D	129	20A	D	22,463.33	4,492.67	26,956.00	27,595.00	27,540.00	25

DCT = Dual Clutch Transmission

\* For full service package details and terms and conditions, please speak to your dealer or visit [www.hyundai.co.uk](http://www.hyundai.co.uk).

† Please contact your dealer for the latest list of compatible mobile phones.

‡ 5 Year Warranty terms and exclusions apply. Please see [www.hyundai.co.uk](http://www.hyundai.co.uk) for full terms and exclusions.

All prices are in Great British Pounds and are correct at time of print. For full specifications and features please check with your local dealer or visit [www.hyundai.co.uk](http://www.hyundai.co.uk).

# New i40 Price Guide

April 2016

Tourer	FUEL TYPE	CO <sub>2</sub> EMISSIONS G/KM	INSURANCE GROUP (1-50)	VED BAND	BASIC RETAIL PRICE	VAT	RETAIL PRICE	RECOMMENDED ON THE ROAD PRICE	P11D VALUE	BIK TAX %
<b>S</b>										
1.7 CRDi 115PS Blue Drive	D	110	13E	B	16,921.67	3,384.33	20,306.00	20,945.00	20,890.00	22
1.7 CRDi 141PS Blue Drive	D	114	18A	C	17,588.33	3,517.67	21,106.00	21,745.00	21,690.00	22
<b>SE Nav</b>										
1.7 CRDi 115PS Blue Drive	D	110	13E	B	18,588.33	3,717.67	22,306.00	22,945.00	22,890.00	22
1.7 CRDi 141PS Blue Drive	D	114	19A	C	19,255.00	3,851.00	23,106.00	23,745.00	23,690.00	22
1.7 CRDi 141PS Blue Drive DCT	D	129	19A	D	20,838.33	4,167.67	25,006.00	25,645.00	25,590.00	25
<b>SE Nav Business</b>										
1.7 CRDi 115PS Blue Drive	D	110	14E	B	19,838.33	3,967.67	23,806.00	24,445.00	24,390.00	22
1.7 CRDi 141PS Blue Drive	D	114	19A	C	20,505.00	4,101.00	24,606.00	25,245.00	25,190.00	22
1.7 CRDi 141PS Blue Drive DCT	D	129	19A	D	22,088.33	4,417.67	26,506.00	27,145.00	27,090.00	25
<b>Premium</b>										
1.7 CRDi 141PS Blue Drive	D	123	20A	D	22,005.00	4,401.00	26,406.00	27,045.00	26,990.00	24
1.7 CRDi 141PS Blue Drive DCT	D	129	20A	D	23,588.33	4,717.67	28,306.00	28,945.00	28,890.00	25
<b>Optional Extras – Saloon &amp; Tourer</b>										
Metallic/Pearl Paint					487.50	97.50	585.00			
Visibility Pack: Bi-Xenon Headlights, Adaptive Forward Lighting System (AFLS), Headlight Washers, Smart High Beam, Speed Sign Recognition <small>Premium models only</small>					829.17	165.83	995.00			
Fixed Price Service Plan* – Up to 20,000 miles over 2 years					332.50	66.50	399.00			
Fixed Price Service Plan* – Up to 30,000 miles over 3 years					415.83	83.17	499.00			
Fixed Price Service Plan* – Up to 50,000 miles over 5 years					665.83	133.17	799.00			



## S

S offers the following features as standard:

- 12V Power Outlet in Front and Rear Console
- 16" Alloy Wheels
- 6 Speakers – 2 Tweeters, 2 Front Door, 2 Rear Door
- 7 Airbags – Front, Front Side, Driver's Knee and Full Length Curtain
- Adjustable Intermittent Front Windscreen Wipers with Aero Blade
- Air Conditioning
- Armrest – Front with Storage
- Armrest – Rear with Cup Holder
- Automatic Headlights with Dusk Sensor
- Bluetooth® Connectivity with Voice Recognition†
- Cloth Seat Trim
- Dash Trim – Black Gloss
- Door Mirrors – Electric Adjustment and Heated
- Door Mirrors with Integrated LED Indicators – Body Coloured
- Drive Mode Selection
- Driver Seat with Manual Height Adjustment and Electric Lumbar Support
- Electric Parking Brake with Automatic Hold Function
- Electric Windows – Front and Rear with Anti-trap and One Touch
- Exterior Door Handles – Body Coloured
- Front Head Restraints – Vertical and Horizontal Adjustment
- Glove Compartment – Illumination and Lock
- Intelligent Stop & Go (ISG)
- Leather Wrapped Steering Wheel and Gear Knob
- Projection Headlights with LED Daytime Running Lights
- Radiator Grille – Black Matt Finish
- Remote Central Locking with Alarm
- Spare Wheel – Emergency Space Saver

- Split Folding Rear Seats 60:40
- Steering Wheel Audio and Phone Controls
- Stereo RDS Radio/Single CD Player with MP3 Compatibility
- Sunvisors with Vanity Mirrors and Illumination
- Tinted Glass with Sunshade Band
- Tyre Pressure Monitoring System (TPMS) with Individual Tyre Pressure Display
- USB & Aux Connections
- Window Surrounds – Chrome Effect
- 5 Year Unlimited Mileage Warranty†
- 12 Years' Anti-perforation Warranty

Tourer offers the following features over Saloon:

- Retractable Load Cover
- Silver Coloured Roof Rails

## SE Nav

SE Nav offers the following features over S:

- 16" Alloy Wheels (1.7 CRDi Manual Blue Drive models only)
- 17" Alloy Wheels (1.7 CRDi 141PS DCT Blue Drive only)
- Automatically Dimming Rear View Mirror
- Automatic Windscreen Wipers with Rain Sensor
- Climate Control – Dual Zone with Auto Defog System for Front Windscreen
- Cruise Control with Speed Limiter
- DAB Radio
- Dash Trim – Brushed Chrome Effect
- Door Mirrors – Electric Adjustment and Heated with Power Folding
- Door Sill – Stainless Steel
- Driver Seat with Electric Adjustment and Lumbar Support
- Exterior Door Handles – Body Coloured with Chrome Inserts
- Front Passenger Seat with Manual Height Adjustment
- Front Windscreen Wiper De-icer
- Heated Front Seats
- Heated Steering Wheel
- Interior Door Handles – Chrome Effect
- LED Fog Lamps – Front
- Parking Sensors – Front and Rear (acoustic warning only)
- Privacy Glass
- Solar Glass with Sunshade Band

- Touchscreen Satellite Navigation System with Rear View Parking Camera and Parking Guidance System

Tourer offers the following features over Saloon:

- Rear Seat – Easy Folding System
- Retractable Load Cover
- Silver Coloured Roof Rails

# New i40 Model Details

## SE Nav Business

SE Nav Business offers the following features over SE Nav:

- Driver Seat with Electric Adjustment and Memory Function
- Front Passenger Seat with Electric Adjustment and Lumbar Support
- Keyless Smart Entry with Engine Start/Stop Button
- Leather Seat Trim (seat facings only)
- Parking Sensors – Front and Rear (acoustic plus visual aid within instrument cluster display)
- Ventilated Front Seats

Tourer offers the following features over Saloon:

- Rear Seat – Easy Folding System
- Retractable Load Cover
- Silver Coloured Roof Rails

## Premium

Premium offers the following features over SE Nav Business:

- 18" Alloy Wheels
- 9 Airbags – Front, Front Side, Rear Side, Driver's Knee and Full Length Curtain
- Alloy Pedals
- Heated Rear Seats (outer rear seat bases only)
- Lane Departure Warning System with Lane Keep Assist
- LED Brake Light – High Mounted
- Luggage Net
- Panoramic Sunroof – Electric Tilt and Slide
- Radiator Grille – Black with Chrome Inserts
- Rear Electric Window Blind
- Supervision Instrument Cluster with LCD Colour Display
- Window Surrounds – Satin Chrome Effect Door Frame and Beltline Moulding

Tourer offers the following features over Saloon:

- Luggage Floor Rail System
- Rear Seat – Easy Folding System
- Retractable Load Cover
- Silver Coloured Roof Rails
- Smart Electric Tailgate

Tourer removes the following feature over Saloon:

- Rear Electric Window Blind