



NEW THINKING.  
NEW POSSIBILITIES.

NEW GENERATION HYUNDAI *i30*



**5** YEAR  
TRIPLE  
CARE<sup>™</sup>  
Unlimited Mileage Commitment

BORN IN GERMANY.

BUILT IN EUROPE.

# DESIGNED TO IMPRESS

The i30 3door brings brand new excitement to the roads. Even at standstill, the energetic design is guaranteed to make an impression. Combined with dynamic handling and smooth acceleration delivered by a choice of responsive, yet efficient engines, this new i30 creates pure driving pleasure, wherever you're headed.



## INSPIRATION FROM EVERY ANGLE

Born and bred in Europe, the i30 is the result of committed teamwork focused on delivering a 3door that excites in every department. The trademark i30 fluidic design delivers a more powerful, sporty look. It conceals a car that sets a new benchmark in quality and efficiency.



### A. A face to remember:

The unique grill is flanked by fog lamps with LED Daytime Running Lights, whilst the bumper features a lower lip.



### B. Design at its best:

We call it Fluidic Sculpture, inspired by the flow and form of nature. The sporty rear section features a new bumper design with horizontal fog lamps. For heightened visibility and a bold design statement, LED rear lamps are also optional. 17" alloy wheels complete the dynamic stance.



### C. Sunshine at the touch of a button:

The optional twin-panel panoramic roof instantly retracts to brighten the cabin, creating a true open-air driving experience. The automatic deflector keeps a strong breeze at bay.



# WELCOME TO THE DRIVER'S DOMAIN.

The new i30 3door offers relaxation and excitement in equal measures. High quality materials like exclusive leather and smart technology including a heated steering wheel, 6-speaker audio system including CD and MP3 player, or the optional rear view camera create the perfect comfort zone. The responsive engines are matched with smooth, yet engaging transmissions for a truly spirited drive.



## POISED TO CREATE A STIR

The i30 3door interior is designed to dazzle. Bright, bold and luxurious, every detail tempts you to take this Hyundai for a ride. Six engines combine refreshing city and highway performance with fewer emissions. All i30 engines also offer the option of our innovative Blue Drive™ technology for even greater fuel economy. That includes an efficient high-torque four-cylinder 1.6 litre diesel capable of 128 PS, yet with CO<sub>2</sub> emissions of only 97 g/km.

### **6-speed manual transmission.**

Available with all i30 engines, the 6-speed manual delivers incredibly precise gear changes and a smooth, confident feel. To improve fuel efficiency and reduce CO<sub>2</sub> emissions, an indicator on the dashboard signals the ideal moment to shift.



### **6-speed automatic transmission.**

All 1.6 litre engines can be combined with a smooth 6-speed automatic designed for greater acceleration and fuel economy. The transmission also includes an active eco system for a greater reduction of CO<sub>2</sub> emissions.



### **Sitting in style:**

The sumptuous leather seats feature camel orange leather stitching (option not shown here). You'll find the same exclusive detail on the leather steering wheel, door panels and gear lever. The driver seat comes with electric lumbar support to help you enjoy even the longest journey. Heated front seats and electric height adjustment for the driver seat are also available.



# FACTS & FIGURES.

TYPE	GASOLINE						DIESEL					
	Gamma 1.4		Gamma 1.6 MPI		Gamma 1.6 GDI		U2 1.4	U2 1.6 110 PS		U2 1.6 128 PS		
Transmission	6MT	6MT	6AT	6MT	6AT	6MT	6MT	6AT	6MT	6AT		
<b>ENGINE</b>												
Displacement (cc)	1,396		1,591		1,591		1,396	1,582		1,582		
Bore x stroke (mm)	77 x 74.99		77 x 85.44		77 x 85.44		75 x 79	77.2 x 84.5		77.2 x 84.5		
Cam type	DOHC, IPI-CVVT		DOHC, IPI/EX-CVVT		DOHC, IPI/EX-CVVT		DOHC	DOHC		DOHC		
Compression ratio	10.5		10.5		11.0		17.0	17.3		17.3		
Max. Power (kW/rpm)	73.2/5,500		88/6,300		95.3/6,300		66/4,000	81/4,000		94/4,000		
Max. Torque (Nm/rpm)	137/4200		156/4,850		157/4,850		220/1,500~2,750	260/1,900~2,750		260/1,900~2,750		
<b>BRAKES</b>												
Type	Disc											
Front brake size (inch)	15		15 (16 optional)									
Rear brake size (inch)	14											
<b>SUSPENSION</b>												
Front	Fully independent subframe-mounted MacPherson struts, with coil springs, and gas-filled shock absorbers. Anti-roll stabiliser bar											
Rear	Fully independent subframe-mounted multi-links, with coil springs, and gas-filled shock absorbers. Anti-roll stabiliser bar											
<b>SAFETY</b>												
Standard	Emergency Brake Signal, ABS, ESP + Vehicle Stability Management, Hill Assist Control, Front Airbags, Side Airbags, Curtain Airbags.											
Optional	Xenon Headlights with AFLS and static bending light, Knee Airbag, Electric Parking Brake.											
<b>STEERING</b>												
Type	Rack and pinion. Motor Driven Power Steering (MDPS)											
Steering wheel turns (lock to lock)	2,85											
Minimum turning radius (m)	5,3											
<b>WHEEL &amp; TYRE</b>												
Wheel size (inch)	6.0Jx 15 6.5Jx 16		6.0Jx 15 6.5Jx 16 7.0Jx 17		6.0Jx 15 6.5Jx 16 7.0Jx 17		6.0Jx 15 6.5Jx 16		6.0Jx 15 6.5Jx 16 7.0Jx 17		6.0Jx 15 6.5Jx 16 7.0Jx 17	
Tyre size	195 / 65R 15 205 / 55R 16		195 / 65R 15 205 / 55R 16 225 / 45R 17		195 / 65R 15 205 / 55R 16 225 / 45R 17		195 / 65R 15 205 / 55R 16		195 / 65R 15 205 / 55R 16 225 / 45R 17		195 / 65R 15 205 / 55R 16 225 / 45R 17	
<b>CAPACITIES</b>												
Luggage seat up/down	378/1,316 litres											
<b>WEIGHT</b>												
Curb weight (kg)	1,185~1,305	1,187~1,311	1,220~1,344	1,192~1,224	1,225~1,356	1,285~1,401	1,290~1,420	1,310~1,440	1,290~1,420	1,310~1,440	1,290~1,420	1,310~1,440
Gross vehicle weight (kg)	1,820	1,820	1,850	1,820	1,850	1,910	1,920	1,940	1,920	1,940	1,920	1,940
Trailer weight w/o brake (kg)	600											
Trailer weight w/ brake (kg)	1,200	1,300	1,200	1,400	1,300	1,500	1,500	1,400	1,500	1,500	1,400	1,400
<b>PERFORMANCE &amp; FUEL CONSUMPTION</b>												
Top speed (km/h)	182	192	192	195	192	170	185	180	197	190	197	190
Acceleration 0-100 km/h (s)	13.2	10.9	11.9	9.9	11.0	13.5	11.5	12.3	10.9	11.7	10.9	11.7
F/C (l/100 km)												
Urban	7.9	8.5	9.5	7.7	9.1	5.3	4.9	7.2	4.9	7.2	4.9	7.2
Extra-urban	4.9	5.0	5.2	4.6	5.3	3.5	3.7	4.5	3.7	4.5	3.7	4.5
Combined	6.0	6.3	6.8	5.7	6.7	4.1	4.1	5.5	4.1	5.5	4.1	5.5
CO <sub>2</sub> emission (g/km)	139	146	159	134	157	109	109	145	109	145	109	145

## EXTERIOR COLOURS



Cool Red (TWR)



Blue Berry (WAE)



Aqua Blue (T2U)



Ice Blue (XAF)



Hazel Brown (U8N)



Cashmere Brown (N5W)



Satin Amber (P5N)



Sleek Silver (RAH)



Phantom Black (PAE)

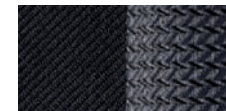


Steel Gray (ZAR)

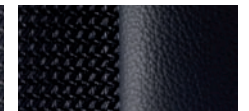


Creamy White (TCW)

## INTERIOR TRIMS



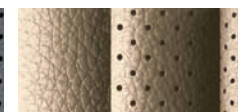
Black Cloth (GLS)



Black Cloth/Leather



Black Leather



Beige Leather

- Some of the equipment illustrated or described in this catalogue may not be supplied as standard equipment and may be available at extra cost.
- Hyundai Motor Company reserves the right to change specifications and equipment without prior notice.

# THE FUTURE IS CERTAIN.

Your Hyundai i30 is built to the highest quality standards. To ensure your complete satisfaction, we also offer our highest level of warranty protection: the 5-Year Triple Care Service that reflects our commitment to long-term quality assurance and customer care.



## 5-YEAR UNLIMITED WARRANTY

Your 5-year unlimited mileage\* warranty provides bumper to bumper coverage, including powertrain, plus a 12-year anti-perforation warranty. Your warranty is valid in 26 countries across Europe, excluding Russia, Croatia, and Ukraine.

\* Vehicles used for taxi or rental car purposes are covered by a 3-year, 100,000 km warranty.

## CARE & RELATION

▶ The promise of a generous brand that cares about consumer needs, listens to feedback, and is keen on understanding how it can make a difference to people's lives.



## 5-YEAR ROADSIDE ASSISTANCE

Should you experience a breakdown, in your home country or while driving abroad, one call to our free hotline number will send help to you straight away. If necessary, towing to the nearest Hyundai dealer is also included. Free roadside assistance is valid for five years, coinciding with your 5-year warranty period.

## STRESS-FREE

▶ A commitment to improve the quality of the ownership experience over time (more than a quick upfront deal).



## 5-YEAR VEHICLE HEALTH CHECK

In addition to your annual main service maintenance, your Hyundai dealer will perform a check on key elements of your i30, including engine, transmission, steering, suspension, and brake systems, during your 5-year warranty period. If you prefer, you can replace the 5-Year Vehicle Health Check with any other service programme.

## RELIABLE

▶ A reassurance over Hyundai's high quality, aimed at reducing perceived risks and lowering barriers to consideration.

Hyundai is constantly focused on understanding the changing needs of our customers. This is why we carefully listen to your feedback, and never stop the search for new ways to increase your long-term satisfaction as a Hyundai owner.

By extending our 5-Year Triple Care package to cover more essential care needs in vehicle servicing and greater assistance everywhere you travel, we hope to show our commitment, appreciation, and focus on ensuring a reliable premium ownership experience. Together with our dealers across Europe, we look forward to serving you, and exceeding your expectations each time you turn to us.



## NEW THINKING. NEW POSSIBILITIES

People's expectation toward individual mobility requires more than just a convenient means of transportation. The old understanding of cars has become outdated. A car represents individuals' lifestyles, and it has become an integral part of their lives. At the same time, the automobile industry has experienced seismic change. Hyundai Motor Company has grown rapidly to become one of the largest automakers, backed by world class production capability and superior quality. We have now reached a point where we need a qualitative approach to bring bigger ideas and relevant solutions to our customers. This is an opportunity to move forward, and we have developed a new brand slogan that encapsulates our willingness to take a big leap. Led by our new slogan and the new thinking underlying it, we will become a company that keeps challenging itself to unlock new possibilities for people and the planet.

Hyundai Motor Europe  
[www.hyundai.com/eu](http://www.hyundai.com/eu)

EU. LHD 1209 ENG.  
Copyright © 2012 Hyundai Motor Europe. All Rights Reserved.

