



For more details,
please consult your Hyundai Dealers.

HYUNDAI MOTOR INDIA LTD.

5th-6th Floor, Corporate One – Baani Building,
Plot No. 5, Commercial Centre, Jasola, New Delhi-110076
Visit us at www.hyundai.co.in
Call us at 1800-11-4645 (Toll Free) 098-7356-4645



NEW THINKING.
NEW POSSIBILITIES.



The *Elite*
i20
Un-compromise





Un-compromised Living

Presenting a car beyond the ordinary

It's for those who dare to follow their dreams. The Elite i20 is the enabler of achieving a new dream every day. It's made to compliment your unique personality. Here dynamics meet practicality. It's about cherishing a lifestyle you deserve. So, go out and let every small detail in this car make a big difference. Compromises are passé. A life un-compromised now awaits all the modern elites of India.

COM

Unleash
Relaxation

FOORT

ABLE



Elite i20



Because we all have hobbies we like to enjoy.

There are people with style and then there are style icons. Like the new Hyundai i20. Loaded with next-gen features, space and a stunning performance, it makes sure that you never have to compromise on your drive ever again.







For you comfort is everything.



Whether you are an artist who looks for inspiration, or a go-getter who aims high, comfort should always be around you.

That's why, the Hyundai i20 has comfort features and specifications that make driving a comfortable and easy task. Because brilliance happens only when the mind feels relaxed.





STYLISH

'Haute-ness' Personified

True style never goes out of fashion.

Confident and energetic are not mere words. These are ways you style your bold living. No wonder, you expect everything around you to be stylish and exquisite.

The i20 with the fresh 'Fluidic 2.0' design concept brings to the street all the exhilaration, excitement and flair you'd expect from a stylishly bold car. It combines sports car style and dynamics with hatchback practicality.





Sporty Black C-Pillar
(1st in Segment)



Uniquely Designed Stylish Tail Lamps

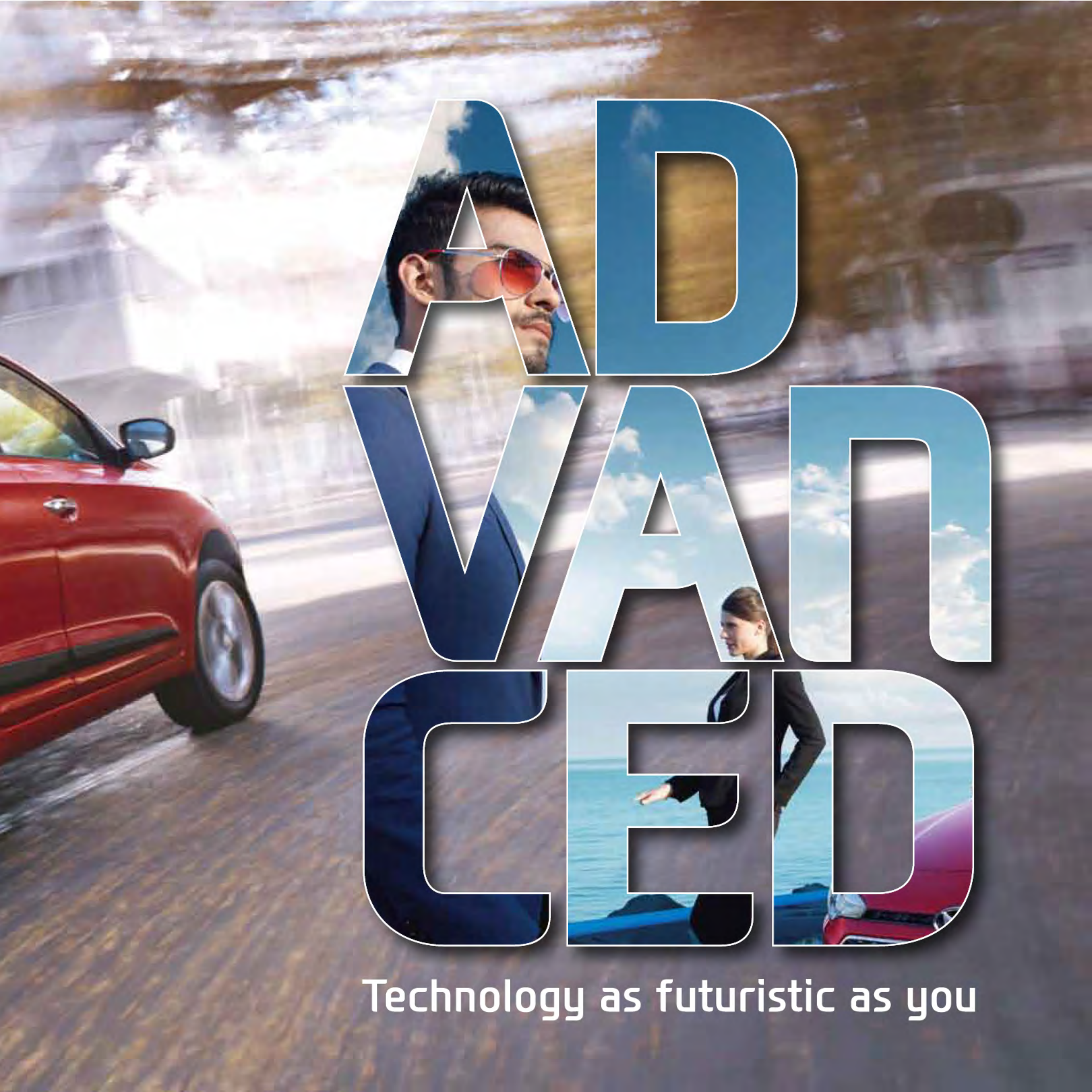


i20

Elite i20

1.5 CRDi

CRDi



ADVANCED VEHICLES CELEBRATE

Technology as futuristic as you



The heart will never compromise.

Everything for you should come from the heart. That is what makes you special and distinguished from everyone around you. The Hyundai i20's engine is a lot like your heart. Designed for outstanding performance, the heart of the i20 enhances your driving pleasure by being quiet and responsive.





The Elite i20 is powered by two performance-packed, proven and reliable engines- The **1.2L Kappa Dual VTVT Petrol Engine** and **1.4L U2 CRDi Diesel Engine**.

The refined & smooth 1.2L Kappa engine comes with latest dual VTVT technology, offering the optimum combination of power, mileage and refined performance.

The powerful & efficient 1.4L 'U2' CRDi engine is among the technologically advanced engines from Hyundai diesel family. It comes with 6-speed manual gear box & has proven track record for its reliability, durability & powerful performance.





A man in a blue shirt and sunglasses walking a dog. The letters 'S' and 'A' are filled with this image.

SA

A dog's head and a man's hand holding a leash. The letters 'F' and 'E' are filled with this image.

FE

Secured
at all
times

A dog's head and a man's legs walking on a sidewalk. The letters 'T' and 'Y' are filled with this image.

TY





You are in safe hands.

At Hyundai, safety is one of our highest considerations and begins at the design stage of each vehicle. It comes standard with numerous active and passive safety measures like Airbags and ABS, which are designed to help the driver stay in control at all times, thus assuring safety. This is one well-built machine that gives attention to even the most minute detail.





Reverse Parking Sensors



Anti-lock Braking System (ABS)



Rear Camera with Steering Adaptive Parking Guidelines (1st in Segment)



Features Galore

The feature-r richest Hyundai i20 has so much oomph that you will be in awe every time you step into it. So many features beautify this beast and each of them is a testament to its extreme ease and class. Visit the features galore and elevate to a lifestyle extraordinaire.



11

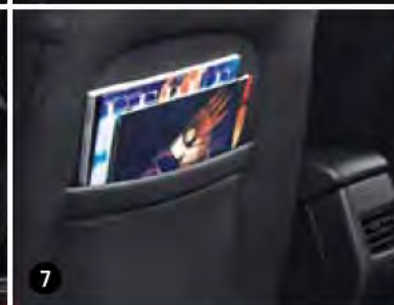
Exterior



- 1. Front Air Dam:** Serving as a natural focal point for the eye, the new i20 hexagonal grille with chrome finish front air dam conveys an image of style, authority and sophistication.
- 2. Sporty Black C Pillar (1st in Segment):** The new black color C-Pillars add a distinct visual and sporty element to the overall style of the new i20.
- 3. Wraparound Automatic Headlamps (1st in Segment):** The wraparound automatic headlamps in the new i20 project the best of style & functionality.
- 4. Uniquely Designed Stylish Tail Lamps:** The uniquely designed 3-step stylish tail lamps feature a distinctive, stylish design and provide optimal visibility and safety.
- 5. Chrome Door Handle:** The chrome-coated door handle is striking on the eye and lends a premium look.
- 6. Hood Character Lines:** The sharp character lines of the hood complementing the front bumper enhance the overall style quotient of the car.
- 7. Turn Indicator Outside Mirror:** Aerodynamically sculpted stylishly-shaped body colored ORVM mirrors features LED light indicator to promote safer lane changes and increased visibility when turning.
- 8. Front Fog Lamps:** Sporty fog lamps complement the headlamps with their stylish design and provide maximum penetration in foggy driving conditions.
- 9. Waistline Molding:** The black color waistline molding imparts sporty looks and prevents side scratches to the body.
- 10. Dual Tone Rear Bumper:** The rear bumper is designed on a dual tone theme with black garnish at the bottom to enhance the rear sporty appeal.
- 11. R16 Diamond-Cut Alloy Wheels (1st in Segment):** The stylish dual tone R16 diamond cut alloy wheels impart a sporty and dynamic appeal.



Interior



1. **Beige & Black Interior:** The interior of all new Elite i20 is stylish, luxurious & up-market echoing the stylish tone set by outer shell with a generous flair of comfort & high level of premiumness.
2. **Advanced Informative Supervision Cluster (1st in Segment):** The aesthetically designed cluster with its blue & white illumination is soothing to the eye & informative at the same time. It has an inbuilt screen with multi-information display ensuring customized information for your convenience.
3. **2 DIN Audio with 1GB Memory (1st in Segment):** The Elite i20 with its next generation music system is equipped with 8 speaker system, Bluetooth & first-in-segment 1 GB internal memory. Also, USB & AUX ports connect your car to all your favorite gadgets.
4. **Multi-Function Steering:** On your finger tip, you set control over important functions: Audio, Bluetooth & cluster settings, thereby offering minimum distractions and maximum convenience & safety.
5. **Rear Seat 60:40 Split:** The 60:40 split provide the versatility to customize both storage & cargo space as per need.
6. **Height Adjustable Driver Seat:** The feature adjusts the driver seat for customized driving position.
7. **Seat Back Pocket:** Seamlessly integrated seat back pocket is purposeful in stocking books or magazines to keep you indulged.
8. **Rear Parcel tray:** The tray adds to your convenience by giving more places to store books and small utility items.
9. **Map Pockets:** Aesthetically designed map pocket in front & rear is useful for keeping essential papers and magazines and offers a built-in bottle holder.
10. **Sunglass Holder:** Conveniently located at front map lamp, a safe place to keep your shades.
11. **Front & Rear Seating:** Ergonomically designed front seat is well contoured to provide sufficient thigh & back support. The rear seats are spacious & well cushioned, offers best thigh & back support for comfortable and fatigue free journeys.



Comfort & Convenience



1. **Auto-Foldable Electric Mirror:** The outside mirrors automatically open & close when the car is unlocked/locked.
2. **Rear AC Vents :** The rear AC vents has been designed to enhance rear passenger comfort with instant cooling during summers & heating during winters.
3. **FATC with Cluster Ionizer (1st in Segment):** The fully automatic AC maintains the desired cabin temperature and cluster ionizer generates ions to purify & deodorize cabin for a healthier & pleasant drive.
4. **Ticket Holder:** A very innovative way of keeping the sundry cards/tickets without the hassle of missing them.
5. **Glove Box Cooling:** The spacious glove box comes with cooling function to keep the beverages/confectionaries cool & fresh.
6. **Steering Adaptive Parking Guidelines (1st in Segment):** The rear camera parking guidelines are steering angle sensitive & curve as per the steering position to precisely guide the vehicle during complex congested parking space.
7. **Tilt and Telescopic Steering:** The steering column features a telescopic as well as a tilt adjustment as per convenience to ensure the perfect driving position.
8. **Luggage Lamp:** The feature activates with the opening of the boot lid and enables proper lighting in the boot area to help locate/put objects during night.
9. **Rear Wiper & Washer:** The rear wiper ensures high wiping efficiency which translates to a better rear view.
10. **One Touch Turn Signal:** Convenient one-touch function to warn lane change intention to the rear traffic, hence ensuring safe driving.



11. **Front Console Armrest with Storage Box (1st in Segment):** The armrest in the front provides support to arm and houses a generous storage box offering more convenience.
12. **Centre Console Tray:** The tray ensures that small utility items & gadgets like mobile phones, IPODs, etc. are easily accessible and always in place
13. **Cup Holders:** The front passengers can enjoy their favorite beverage while on the move ensuring fresh & fatigue-free journeys.



Safety

1. **Reverse Parking Sensors:** On activation of reverse gear, the sensors with their built-in buzzer system alert the driver about the proximity of rear obstacles.
2. **Smart Pedal (1st in Segment):** During simultaneous operation of the brake & accelerator pedal, the smart pedal overrides the accelerator pedal & applies brake only.
3. **Anti-Lock Braking System:** The Anti-lock braking system prevents skidding and retains the car steering on slippery surfaces. It also enables stable braking and restricts wheel lock-up during panic braking.
4. **Rear Defogger:** The feature removes the mist on rear windshield during foggy conditions to ensure proper visibility of traffic from rear.
5. **Smart Key with Push Button Start:** Smart key adds to convenience & push button enables start and stop of the car with just a touch.
6. **Dual Airbags:** The front dual airbags act as a supplementary restrain system preventing injury incase of front impact.
7. **Anti-pinch Power Windows:** The driver side window automatically rolls down when an obstacle is detected, thereby offering advanced safety.
8. **Impact Sensing Door Unlock:** Incase of collision the door gets unlocked automatically to allow safe & quick exit to passengers.
9. **Headlamp Escort Function:** Allows the headlamp to be in ON condition for a limited time after the car is locked to illuminate the path if parked at a dark location.



Your
compromise
on cars
ends here.



KEY FEATURES

	Era	Magna	Sportz	Sportz (O)	Asta
ENGINE & TRIM PLAN					
1.2 Kappa Petrol with Dual VTVT	*	*	*	*	*
1.4 U2 CRDI Diesel	*	*	*	*	*
SAFETY					
Airbag	Driver	-	-	S	S
	Passenger	-	-	S	S
Anti Braking System (ABS)	-	-	S	S	S
Parking Assist	Reverse Parking Sensors	-	-	S	S
	Rear Camera with ECM display	-	-	S	S
Front Fog Lamps	-	-	-	-	S
Automatic Headlamps	S	S	S	S	S
Central Locking (Door & Tailgate)	S	S	S	S	S
Smart Pedal	-	-	S	S	S
Impact Sensing Auto Door Unlock	-	-	-	S	S
Clutch Lock	Day & Night	S	S	S	S
Inside Rearview Mirror	Electrochromic (ECM)	-	-	S	S
Headlamp Escort Function	-	-	S	S	-
Keyless Entry	Foldable Key	-	-	S	S
	Smart Key	-	-	S	S
Rear Defogger with Timer	-	-	S	S	S
Seat Belt Pretensioners- Driver & Passenger	S	S	S	S	S
Immobilizer	S	S	S	S	S
Dual Horn	-	-	-	-	-
EXTERIOR					
Front Grille	Black	S	-	-	-
	Black + Chrome	-	S	S	S
B-Pillar Black Out Tape	-	S	S	S	S
C-Pillar Black Finish	-	S	S	S	S
Body Colored	Bumpers	-	S	S	S
	Outside Door Mirrors	-	S	S	-
	Outside Door Handles	S	S	S	S
Dual Tone Rear Bumper	-	-	-	S	S
Walstline Moulding- Black	-	-	-	S	S
Turn Indicators on Outside Mirrors	-	-	-	S	-
Chrome Outside Door Handles	S	S	S	-	-
Full Wheel Covers	-	-	-	S	S
Alloy Wheels- Diamond Cut (4 nos)	S	S	S	S	S
Roof Antenna	-	-	-	S	S
INTERIOR					
2-Tone Beige & Black Interior	S	S	S	S	S
Front & Rear Door Map Pockets	S	S	S	S	S
Front Passenger Seat Back Pocket	-	S	S	S	S
Rear Parcel Tray	Inside Door Handles	S	S	S	S
Metal Finish	Parking Lever Tip	-	-	S	S
	Leather Gear Knob	-	-	S	S
Leather-wrapped Steering Wheel	-	-	S	S	S
Sunglass Holder	-	-	S	S	S
INSTRUMENT PANEL & CENTER FASCIA DISPLAY					
Blue Interior Illumination	S	S	S	S	S
Dual Tripmeter	S	S	S	S	S
Tachometer	S	S	S	S	S
Digital Clock	-	-	-	-	-

BODY COLORS



Pristine Blue



Stardust



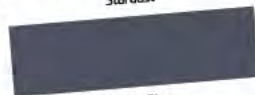
Red Passion



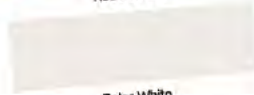
Midas Gold



Sleek Silver



Mystic Blue



Polar White

	Era	Magna	Sportz	Sportz (O)	Asta
Warning & Indicators					
	Gear Shift	S	S	S	S
	Low Fuel	S	S	S	S
	Door & Tailgate Ajar	S	S	S	S
	Immobilizer	S	S	S	S
	Driver Seatbelt Reminder	S	S	S	S
Advanced Supervision Cluster					
	Steering Position Reminder	-	-	-	S
	Service Reminder	-	-	-	S
	Parking Sensor Display	-	-	-	S
	Auto Unlock Function	-	-	-	S

	Era	Magna	Sportz	Sportz (O)	Asta
IC Light Adjustment (Rheostat)					
	S	S	S	S	S
SEATING					
	Front Seat Adjustable Headrest	-	-	S	S
	Height Adjustable Driver Seat	-	-	-	S
	Rear Seat	60/40 Split	S	S	S
	Rear Seat Headrest	Integrated	-	-	S
	Adjustable	-	S	S	S

	Era	Magna	Sportz	Sportz (O)	Asta
Front Center Console Armrest with Storage					
	-	S	S	S	S
AUDIO					
	2-DIN Integrated Radio+MP3 Player	-	-	S	S
	CD Player on Audio	-	S	S	S
	1GB Internal Memory	-	S	S	S
	Front & Rear Speakers	-	S	S	S
	Tweeters	-	S	S	S
	Aux & USB Ports	-	S	S	S
	Bluetooth Connectivity	-	S	S	S
	Steering Wheel with Audio & Bluetooth Controls	-	-	-	S
COMFORT & CONVENIENCE					
	Push Button Start/Stop	-	-	-	S
Power Windows					
	Front	S	S	S	S
	Time Lag	S	S	S	S
	Rear	-	S	S	S
	Switch Illumination Driver Side	-	-	S	S
	Auto Up-down (Driver only)	-	-	S	S
	Pinch Guard (Driver only)	-	-	-	-
	Manual	S	S	-	-
	Fully Automatic Cluster Ionizer	-	-	S	S

	Era	Magna	Sportz	Sportz (O)	Asta
Air Conditioning					
	Manual	-	-	S	S
	Fully Automatic Cluster Ionizer	-	-	S	S
Motor Driven (Electric) Power Steering					
	Rear AC Vents	-	S	S	S
	Glovebox Cooling	-	-	-	S
	Tilt & Telescopic Steering	-	-	-	S
	Rear Wiper & Washer	S	S	S	S
	Clutch Footrest	S	S	S	S
	Passenger Vanity Mirror	S	S	S	S
	Ticket Holder	-	-	-	S
	Power Outlet	-	-	-	S
	2nd Power Outlet	S	S	S	S
	Theatre Dimming Central Room Lamp	-	S	S	S
	Front Map Lamp	-	S	S	S
	Intermittent Variable Front Wiper	S	S	S	S
	Lane Change Indicator	-	-	S	S
	Luggage Lamp	S	-	-	-
	Outside Mirrors	Internally Adjustable	S	-	S
		Electrically Adjustable	-	-	S
		Electric Folding + Auto Folding	S	S	S

Battery Saver

ITEMS	1.2 Kappa Dual VTVT Petrol	1.4 U2 CRDI Diesel
-------	----------------------------	--------------------

DIMENSIONS		
Overall Length (mm)	3,985	
Overall Width (mm)	1,734	
Overall Height (mm)	1,505	
Wheelbase (mm)	2,570	
Fuel Tank Capacity (ltr.)	45	
Ground Clearance (mm)	170	
ENGINE		
Configuration	4 Cyl, 16 Valves	4 Cyl, 16 Valves
Valvetrain Type	DOHC with Dual VTVT	DOHC
Displacement (cc)	1,197	1,396
Maximum Power (ps/rpm)	83/6,000	90/4,000
Maximum Torque (kgm/rpm)	11.7/4,000	22.4/1500-2750
TRANSMISSION		
Type	5-Speed Manual	6-Speed Manual
SUSPENSION		
Front	McPherson Strut with Coil Spring	
Rear	Coupled Torsion Beam Axle with Coil Spring	
SHOCK ABSORBER		
Front	Gas Type	
BRAKES		
Front	Disc	
Rear	Drum	
TYRE		
Size	185/70 R14 Steel (Era, Magna, Sportz)	
	195/55 R16 Alloy (Sportz O, Asta)	
	Tubeless	

DIMENSIONS



* Some of the equipments illustrated or described in this leaflet may not be supplied as standard equipment and may be available at extra cost. - Hyundai Motor India reserves the right to change specifications and equipment without prior notice. - The colour plates shown may vary slightly from the actual colours due to the limitations of the printing process. - Please consult your dealer for full information and availability on colours and trim.

HYUNDAI MOTOR INDIA LTD.
5th-6th Floor, Corporate One - Bani Building, Plot No. 5, Commercial Centre, Jasola, New Delhi-110076
Visit us at www.hyundai.co.in Call us at 1-800-11-4645 (Toll free) 098-7356-4645

Dealer's Name & Address