

2011 HYUNDAI **SONATA HYBRID**



*hybrid*

SONATA HYBRID PREMIUM PACKAGE IN BLUE SKY METALLIC & PORCELAIN WHITE PEARL



“...THE SONATA HYBRID HAS A SURPRISINGLY ASSERTIVE LOOK ALL ITS OWN.”

*Autoblog.com, July 2010*

Hyundai wasn't the first automaker on the hybrid scene. But our engineers won't settle for second-best, either. The new 2011 Sonata Hybrid features state-of-the-art lithium-polymer batteries that are 25% lighter, 40% more compact and 12% more efficient than nickel-metal-hydrate batteries used in hybrid versions of Toyota Camry and Ford Fusion. All packed into a sleek, wind-cheating design with a .25 drag coefficient that bests many sports cars.

Feeling juiced already? Wait, there's more. Our lithium-polymer battery also has a greater power density: It suffers less than 10 percent degradation of charge after 300,000 miles of testing. The battery pack's smaller size, coupled with its flat configuration, also makes it easier to cool and less likely to overheat. All of which translates into a car that operates on electric power more often – up to 62 mph on batteries alone – and for longer periods of time.

Beyond its innovative hybrid technologies, Sonata is also the first vehicle in its segment to offer heated rear seats and a panoramic sunroof. It's one of the first in its segment to integrate Bluetooth® hands-free phone as standard equipment.<sup>1</sup> And it's one of the first with XM NavTraffic<sup>®2</sup> and factory-installed HD Radio™ Technology with multicasting.<sup>3</sup>

Top it off with an equally impressive set of advanced safety features and America's Best Warranty<sup>4</sup>...and you've got a smart, stylish hybrid sedan that has *CarandDriver.com* raving, "...underdog Hyundai starts looking like the favorite."<sup>5</sup>

## AMERICA'S BEST WARRANTY

POWERTRAIN  
LIMITED WARRANTY

**10 YEARS  
100,000 MILES**

HYBRID BATTERY PACK  
ASSEMBLY

**10 YEARS  
100,000/150,000 MILES<sup>6</sup>**

NEW VEHICLE  
LIMITED WARRANTY

**5 YEARS  
60,000 MILES**

ANTI-PERFORATION  
WARRANTY

**7 YEARS  
UNLIMITED MILES**

24-HOUR  
ROADSIDE ASSISTANCE

**5 YEARS  
UNLIMITED MILES**



<sup>1</sup> The Bluetooth® wordmark and logos are registered trademarks owned by Bluetooth SIG, Inc., and any use of such marks by Hyundai is under license. Other trademarks are those of their respective owners. <sup>2</sup> XM® Satellite Radio and XM NavTraffic® require XM subscription, sold separately after a complimentary introductory period. All fees and programming subject to change. Traffic and weather channels only available in select metropolitan markets. See your dealer for details. XM service only available in the 48 contiguous United States. The XM name is a registered trademark of XM Satellite Radio Inc. All other trademarks are property of their respective owners. <sup>3</sup> The HD Radio, HD Digital Radio and HD Digital Radio Alliance are wordmarks and trademarks of iBiquity Digital Corporation, used under license by the HD Digital Radio Alliance. <sup>4</sup> See your Hyundai dealer for LIMITED WARRANTY details. <sup>5</sup> *CarandDriver.com*, July 2010. <sup>6</sup> 150,000-mile warranty offered in California, Connecticut, Maine, Maryland, Massachusetts, New Jersey, New Mexico, Oregon, Rhode Island and Vermont only.





PREMIUM PACKAGE IN CAMEL LEATHER



# INTRODUCING A NEW STANDARD OF LUXURY: YOURS.

As you approach the driver's door, Sonata Hybrid senses when you're carrying its Proximity key and invites you in by unlocking the door at the press of a button on the door handle. Slip inside, and you're surrounded by thoughtfully designed, eco-friendly components like the soy-based foam padding used for seat support. Audio, phone and cruise controls are exactly where your fingertips expect them to be on the steering wheel. A crisp 4.2-inch LCD display in the instrument cluster tracks the Hybrid's vital signs and trip information like average fuel economy, range to empty and ECO indicator. Look to your right – an artfully styled console presents dual automatic climate controls and an AM/FM/XM<sup>®</sup>/CD/MP3 stereo that seamlessly integrates with audio peripherals like your iPod.<sup>1</sup> In every sense, the new Sonata Hybrid is an ergonomic breath of fresh air.



## KEEP IN TOUCH

An available navigation system includes a 7-inch high-resolution touchscreen that, in addition to turn-by-turn directions, integrates features such as a backup camera and a hybrid technology display.

## HYBRID TECHNOLOGY DISPLAY

Visible on a 4.2-inch screen between the odometer and tach (or optional 7-inch navigation screen), the Hybrid Technology Display provides instant fuel economy feedback and acknowledges when your driving is eco-focused.



## EVERY AMENITY, NEATLY INTEGRATED

Dual automatic temperature control, an Infinity audio system and Bluetooth<sup>®</sup> hands-free phone controls are all at your fingertips.



## PLUSH SEATING

Taut, fine-grain leathers expertly fit to Sonata's stylish contours highlight a variety of available luxurious options for your driving pleasure.



## WARM RECEPTION

Available heated front and rear seat bottom cushions can take the chill off a cold morning – and may seem indispensable in colder climates.



## FIRST-CLASS PAMPERING

Rear seat vents deliver air conditioning or heating to your pampered rear-seat passengers.

## THE GREAT WIDE OPEN

To drive a Sonata Hybrid is to be kind to your planet. Appreciate it all the more with an available panoramic sunroof.



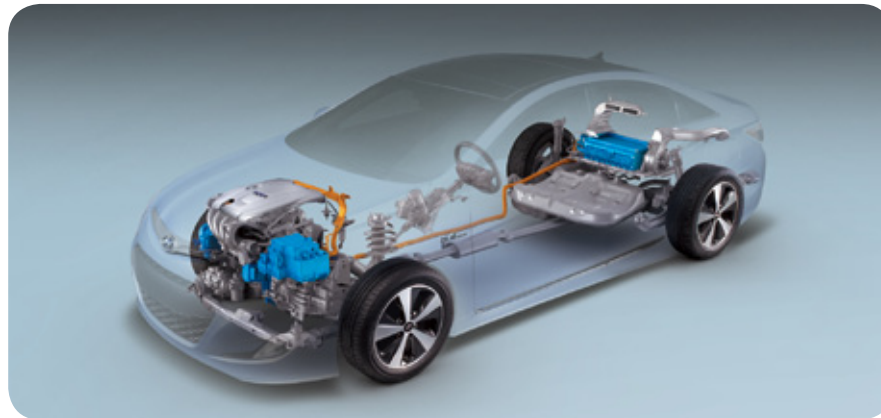
<sup>1</sup> iPod<sup>®</sup> is a registered trademark of Apple Inc.



PREMIUM PACKAGE IN PORCELAIN WHITE PEARL

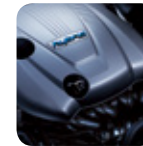
# MAKE THE WORLD A LITTLE MORE GREEN. WITH ENVY.

Rather than licensing existing technology, Hyundai engineers created a unique hybrid system for the 2011 Sonata. A parallel electric motor and fuel engine configuration allows the car to run on gasoline internal combustion, an electric motor, or both. A clutch separating the gasoline engine from the Blue Drive electric motor is attached to a fluid six-speed transmission. Put to the test, Sonata Hybrid can operate up to 62 mph on batteries alone.<sup>1</sup> Combining gas and battery power delivers performance to the tune of 206 hp and 193 lb-ft of torque. Together with an advanced arsenal of safety features beneath the skin, it's easy to understand why owners of competing hybrids are turning green with envy. And why *Popular Mechanics* responded: "With high-spec Sachs shocks and generous brake and tire sizing, the Sonata actually managed to evince a touch of sporty-hybrid panache."<sup>2</sup>



## 2.4L THETA II ATKINSON CYCLE ENGINE

Hyundai engineers paired an electric motor with a 2.4-liter 4-cylinder engine to help generate 206 hp with a best-in-class 40 mpg highway rating.<sup>1</sup>



## ENGINE ENHANCEMENTS

Meticulous enhancements made to the engine's compression and power strokes help Sonata Hybrid yield big gains in fuel efficiency, power and torque.



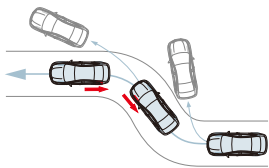
## DIRECT HYBRID BLUE DRIVE

Our lithium-polymer battery design yields big improvements in efficiency compared to mid-size hybrids using nickel-metal-hydrate batteries.



## REGENERATIVE BRAKING

Four-wheel disc brakes with ABS not only scrub speed – the regenerative braking system also recharges Sonata Hybrid's batteries as well.



## ELECTRONIC STABILITY CONTROL (ESC)

Sonata's ESC helps prevent oversteer and understeer, while Electronic Brake-force Distribution and Brake Assist help reduce emergency stopping distances.<sup>3</sup>



## LITHIUM-POLYMER BATTERIES

Lithium polymer technology also helped us introduce a battery that is smaller (leaving more cargo space) with a lower self-discharge rate when your Sonata Hybrid is parked.



## HYBRID STARTER GENERATOR

At stops, the engine shuts off, cutting emissions to zero. On acceleration, the Hybrid Starter Generator automatically restarts the engine.

<sup>1</sup>Based on Hyundai internal estimates. Your actual mileage will vary with options, driving conditions, driving habits and vehicle's condition. <sup>2</sup>popularmechanics.com/cars/reviews/hybrid-electric/2011-hyundai-sonata-hybrid-us-test-drive. <sup>3</sup>Electronic Stability Control (ESC) cannot control your vehicle's stability under all driving situations. ESC is not a substitute for safe driving practices. No system, no matter how advanced, can overcome physics or correct poor driving. The driver is always responsible for controlling the vehicle and must use caution to avoid loss of control in all driving conditions. Speed, road conditions and driver steering input will affect whether ESC can help prevent loss of control. See Owner's Manual for details.



## STANDARD



### Key Standard Equipment :

- 2.4L Atkinson Cycle 4-cylinder Hybrid engine
- Hybrid Starter Generator
- Permanent magnet high-power density motor
- 270V Lithium Polymer battery
- 6-speed automatic transmission
- Electronic Stability Control with Traction Control System
- ABS with Electronic Brake-force Distribution and Brake Assist
- Front active head restraints
- Front, front-seat side and curtain airbags
- 16-inch alloy wheels with unique finish
- Bodyside molding tinted chrome inserts
- Headlight LED accents
- LED tail lights
- Front fog lights
- Side mirror turn signal indicators
- Automatic light control
- Chrome exterior door handles
- Proximity entry key with push-button start
- Electroluminescent instrument cluster (Supervision)
- 4.2" TFT multi-function trip computer w/ hybrid technology display
- Dual automatic climate control
- Floor console mounted rear vents
- Power driver seat with lumbar support
- AM/FM/XM®/CD/MP3 audio system
- iPod®/USB and auxiliary input jacks
- Integrated Bluetooth® hands-free phone system with phonebook transfer

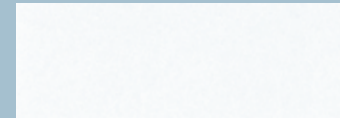
## PREMIUM PACKAGE



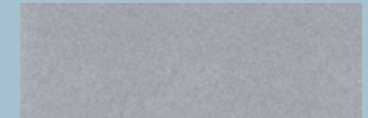
### Premium Package :

- + Panoramic tilt-and-slide sunroof
- + 17-inch alloy wheels
- + Leather seating surfaces
- + Heated front seats and rear seat bottom cushions
- + Leather-wrapped steering wheel & shift knob
- + Navigation system with high-resolution touchscreen display
- + Rear backup camera
- + 400-watt Infinity® audio system
- + HD Radio™ Technology with multicasting
- + Auto-dimming mirror with HomeLink® and compass
- + Premium door sill plates

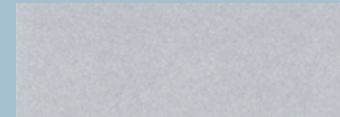
## EXTERIOR\_COLOR CHOICES



PORCELAIN WHITE PEARL



HYPER SILVER METALLIC



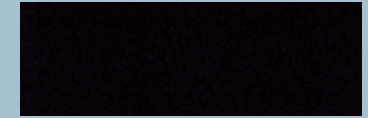
SILVER FROST METALLIC



BLUE SKY METALLIC



VENETIAN RED PEARL

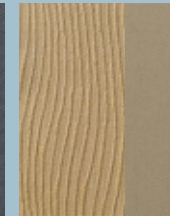


BLACK ONYX PEARL

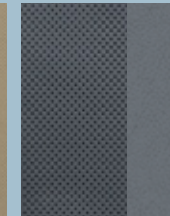
## INTERIOR\_COLOR CHOICES



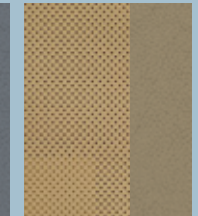
GRAY CLOTH



CAMEL CLOTH



GRAY LEATHER



CAMEL LEATHER

## WEBSITE\_HYUNDAI.COM

Be sure to visit our website, where you can build your own Sonata Hybrid, locate a Hyundai dealer near you, and best of all - schedule a test drive.



NP020-F2011-C

HYUNDAI.COM

©2010 HYUNDAI

While the information contained in this brochure was correct at time of printing, specifications and equipment can change. Feature comparisons based on competitor information available at time of printing. No warranty or guarantee is being extended in this brochure, and Hyundai reserves the right to change product specifications and equipment at any time without incurring obligations. Some vehicles are shown with optional equipment. Specifications apply to U.S. vehicles only. Please contact your Hyundai dealer for current vehicle specifications. As part of Hyundai's commitment to a sustainable environment, this brochure is printed using paper certified by the Forest Stewardship Council. FSC-certification helps ensure that the highest social and environmental standards are met in the making of the paper we use, contributing to conservation, responsible management, and community level benefits for people near the forests.



**Mixed Sources**  
Product group from well-managed forests and other controlled sources  
www.fsc.org Cert no. SGS-COC-006624  
© 1996 Forest Stewardship Council