

2012 HYUNDAI **SONATA**



# “THE SONATA HAS EMERGED AS AN UNQUESTIONED LEADER IN A SEGMENT THAT’S BURSTING WITH EXCELLENT AUTOMOBILES.”

AUTOMOBILE MAGAZINE, FEBRUARY 2011



The Hyundai Sonata has been spending a lot of time in the limelight of the automotive press. And no wonder – as *Car and Driver* noted, “It offers the most standard horsepower in its class, with its direct-injection four-cylinder, and it gets the top EPA highway rating of 35 mpg.”<sup>1</sup> They liked it so much, they named it one of their “10Best Cars for 2011”.

And they’re not alone. The 2011 Sonata was also honored as an *Automobile Magazine* All-Star and earned the AutoPacific® President’s Award for recording the firm’s highest-ever driver’s satisfaction score.<sup>2</sup> Forbes named it one of the “Best Cars for Commuters.”<sup>3</sup> Even *Parents Magazine* was impressed, teaming with Edmunds.com to designate it as one of the best family vehicles of 2011.<sup>4</sup>

To top it off, Sonata was honored as the 2011 International Car of the Year.<sup>5</sup> And while it may be drawing worldwide acclaim, the Sonata is designed and assembled right here in the U.S.A.

<sup>1</sup> *CarandDriver.com*, 2011 10Best Cars, November 2010. <sup>2</sup> ©1997-2011 AutoPacific, Inc. Research Suite.® <sup>3</sup> [www.forbes.com/2011/02/08/best-cars-for-commuters-business-autos\\_slide\\_11.html](http://www.forbes.com/2011/02/08/best-cars-for-commuters-business-autos_slide_11.html). <sup>4</sup> *Parents* magazine, July 2011. <sup>5</sup> Selected by a jury of 12 automotive journalists at the 2011 North American International Auto Show in Detroit. <sup>6</sup> EPA estimates for comparison only. Your actual mileage will vary with options, driving conditions, driving habits and vehicle’s condition.



The GLS model couples a dynamic design with premium features not commonly found on midsize sedans. Our SE model dials in sport tuning for more aggressive performance, while Sonata Limited offers more of everything for a top-of-the-line experience. Both SE and Limited are available with a 274-horsepower turbocharged engine. There's also a Sonata Hybrid that combines the most passenger volume in its class with a 40-mpg highway rating.<sup>6</sup>

No wonder *Car and Driver* summed up Sonata by saying, "...its greatness is undeniable."

SONATA LIMITED 2.0T IN MIDNIGHT BLACK & HYBRID ULTIMATE PACKAGE IN BLUE SKY METALLIC



SONATA LIMITED IN SPARKLING RUBY & LIMITED 2.0T IN HARBOR GRAY METALLIC



*"...brisk responses, all-day comfort, a handsomely appointed interior, seductive good looks, first-rate fit and finish, and lots of features baked into an attractive price. Hard to improve on a formula like that." ~ CARANDDRIVER.COM, OCTOBER 2010 (Reviewing 2011 Sonata SE 2.0T)*

## EMOTIONS DON'T FOLLOW STRAIGHT LINES.

Run your hand along Sonata's free-flowing lines, and you'll be in touch with the seductive allure of Hyundai's new thinking in automotive design. The harmony conveyed in these energetic lines has been inspired by fluidic sculptures found in nature, carved by wind and water.

It's a study in artistry and aerodynamics that begins with the graceful shapes of the grille and wraparound headlights. Then continues with windswept lines that lead your eye across Sonata's raked roof line and sleek shoulders to the stylish taillights in back.

Engineering artistry even extends to the painting process, where an advanced rotational dip method uses opposing electrical charges to pull primer and paint onto every nook and corner of Sonata's chassis and body, offering protection from the elements and the effects of salt, rust and corrosion.



SONATA HYBRID HEADLIGHT





SONATA SE IN HARBOR GRAY METALLIC



SONATA LIMITED IN CAMEL LEATHER



## A STEP UP IN CLASS.

Our interior designers made Sonata bigger where you need more room. In fact, the midsize Sonata is so much roomier, its total interior volume actually meets the EPA's classification for large cars.<sup>1</sup> Just as important is what all of that space contains – an impressive array of standard equipment. To the driver's right, an artfully styled center console features audio options and climate controls that operate intuitively. Directly in front, steering-wheel-mounted cruise, audio and phone controls are at the driver's fingertips. Up above, Sonata's magnificent pillar-to-pillar panoramic sunroof offers extra-wide views that let passengers enjoy the splendors of sunny days and starry nights. In every measurable way, Sonata is in a class all its own.



### ADVANCED CLIMATE CONTROL

Dual automatic climate controls with three-zone body-section buttons make it easier than ever for the driver and front passenger to each set their own temperature preferences in the cabin.



### PROXIMITY KEY WITH PUSH-BUTTON START

With the optional proximity key in your pocket or purse, Sonata recognizes your approach and unlocks the door at the touch of a button. Once inside, pressing another button starts the engine.<sup>2</sup>



### FOURSOME-FRIENDLY CARGO ROOM

Open the trunk lid: That's 16.4 cubic feet of cargo room just waiting to be filled. So go ahead, volunteer to drive the entire foursome to the golf course.



### 8-WAY POWER DRIVER SEAT

Settle into your ideal driving position with the 8-way power-adjustable driver seat, complete with power lumbar support. Step up to Sonata Limited, and you'll step into heated leather front and rear seats as well.



BlueLink

Downloaded POI

Location Sharing

Eco Driving

System Info.

Infinity Bluetooth

VOLUME

Radio (FM/AM) MP3

FM/AM

XM

MAP VOICE

ROUTE

SEEK TRACK

MEDIA

DEST

TUNE

PHONE

INFO

SETUP

ENTER

PASS AIR BAG



AUTO

OFF



DUAL

CLIMATE

A/C



SONATA LIMITED IN CAMEL LEATHER

## GIVE YOUR LIVING ROOM A COMPLEX.

The number of firsts that Sonata has brought to its class extends inside the cabin, where you'll find more information and entertainment technologies than most other midsize sedans (or well-equipped man caves) offer. Sonata was the first vehicle in its segment with standard Bluetooth® integrated hands-free phone. The first with factory-installed HD Radio® technology with multicasting.<sup>1</sup> First with XM NavTraffic® and XM Data Services offering real-time updates on stocks, sports and weather. For 2012, Sonata features a Hyundai first: Blue Link™, an innovative suite of telematics that can help you discover points of interest, find a gas station and check prices, communicate with friends, check maintenance, monitor your vehicle from afar, send for help in an emergency, and so much more.



### NAVIGATION TOOLS

Sonata's 7-inch touchscreen is paired with a backup camera<sup>2</sup> to help you see what's behind your car when negotiating tight parking spaces. On the road, an advanced navigation system with voice recognition makes it easier than ever to get from Point A to Point B. XM NavTraffic offers real-time traffic updates, while XM Data Services allow you to search for nearby restaurants, gas stations and ATMs – or check the latest weather, stocks and sports scores.<sup>3</sup>

### COCKPIT CONCERTS

A premium Infinity® AM/FM/SiriusXM®/CD/MP3 audio system adds lifelike sound quality to your music.<sup>4</sup> Eight speakers work in concert with a 400-Watt external amplifier and resonant subwoofer to fill the cabin with crystal-clear sound.



### BLUETOOTH® INTEGRATION

While you're focused on the road ahead, Sonata's standard Bluetooth technology enables hands-free phone calls using voice commands.<sup>6</sup> Phonebook transfer and wireless streaming audio are also standard.



### iPOD®/USB CONNECTIVITY

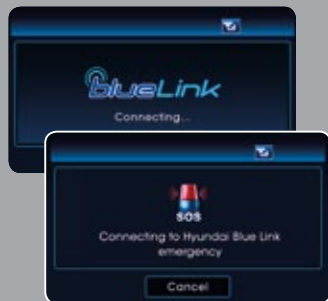
Plug in your portable MP3 player or iPod and enjoy listening to your favorite playlists and podcasts through Sonata's audio system.<sup>5</sup>

<sup>1</sup>The HD Radio,® HD Digital Radio and HD Digital Radio Alliance are wordmarks and trademarks of iBiquity Digital Corporation, used under license by the HD Digital Radio Alliance.<sup>2</sup>Optional on SE, Limited and Hybrid. <sup>3</sup>XM NavTraffic® requires a SiriusXM® subscription, sold separately after a complimentary introductory period. All fees and programming subject to change. Traffic and weather channels only available in select markets, and SiriusXM service is only available in the 48 contiguous United States. See your dealer for details. The XM name is a registered trademark of SiriusXM Satellite Radio Inc. All other trademarks are property of their respective owners. <sup>4</sup>Infinity® is a registered trademark of Harman International Industries, Inc. <sup>5</sup>iPod® is a registered trademark of Apple Inc. <sup>6</sup>The Bluetooth® wordmark and logos are registered trademarks owned by Bluetooth SIG, Inc., and any use of such marks by Hyundai is under license. Other trademarks are those of their respective owners.



## HYUNDAI BLUE LINK: NOW, THE WORLD REALLY IS AT YOUR FINGERTIPS.

A Blue Link-enabled Hyundai features enhanced navigation that not only helps you get where you're going, but reveals shortcuts and points of interest along the way.<sup>1</sup> It can send you real-time traffic updates, find gas stations, and tell you what they're charging. Or find restaurants and tell you what people think of the food. There's location sharing and voice text messaging that keeps you in touch with friends and family.<sup>2</sup> In the event of an emergency, Blue Link instantly knows whom to call and where to send help. There's even a useful feature that sends advance notices of regularly scheduled maintenance intervals to keep your car in prime condition. In all, more than 30 services and features are included in three available packages that let you customize this technology to your individual needs. For details, visit [HyundaiBlueLink.com](http://HyundaiBlueLink.com).



### BLUE LINK ASSURANCE PACKAGE

In an emergency, no matter where you are in the United States, you're not alone. Automatic Collision Notification, SOS Emergency Assistance and Enhanced Roadside Assistance report your position to Hyundai-trained operators and connect you in a flash 24/7/365.<sup>3</sup> You can also receive monthly email reports with comprehensive vehicle diagnostics, ensuring your Hyundai delivers optimal performance with the best possible fuel economy.



### BLUE LINK GUIDANCE PACKAGE

More than getting you where you need to be, this package can tell you what you'll find – from traffic and gas prices to restaurants and museums. Use voice commands to find points of interest, the fastest routes with the least amount of traffic, the cheapest gas, the highest rated restaurants, and more. There's even an Eco-Coach that lets you monitor your mileage online and offers tips for improving your results. (Includes Assurance + Essentials Packages)



### BLUE LINK ESSENTIALS PACKAGE

Blue Link is equal parts fun, convenience and safety. Use your smartphone to remotely lock/unlock your car or flash the lights and honk the horn to find it in a crowded parking lot. Other components let you send voice text messages from your car and share your location with friends. Secure your car with Stolen Vehicle Slowdown and recovery features. Or rest easy with Geo-Fence and Curfew Alerts that notify you (by text, automated phone message or email) when the geography or drive-time boundaries you've set are exceeded. You can also extend your peace of mind with convenient vehicle self-diagnostics. (Includes Assurance Package)



**DOOR UNLOCK**



**DOOR LOCK**



**LIGHT+HORN**

\*Blue Link™ subscription service agreement required. Features vary by subscription plan. Blue Link service works using CDMA-based cellular networks in the 50 United States. Blue Link service is not available where there is no cellular coverage, particularly in enclosed or remote areas. Service availability may be affected by signal strength, foliage, weather, topographical conditions (mountains) and nearby structures (tall buildings, tunnels) and other factors. For additional details and system limitations, visit HyundaiBlueLink.com. Hyundai is a registered trademark of Hyundai Motor America. All rights reserved. ©2011 Hyundai Motor America. †Requires a Blue Link subscription and a Bluetooth® compatible phone paired to the vehicle and assigned as the Primary Driver's mobile phone number in your account. Standard text message rates apply. ‡Blue Link agents will contact existing emergency service responders. Only use Blue Link and corresponding devices when it is safe to do so.



SONATA SE 2.0T IN MIDNIGHT BLACK

## ENGINEERED FOR HIGHER PERFORMANCE. AND FEWER PIT STOPS.

Each of Sonata's revolutionary powertrains leads the competition in both power and fuel efficiency. Our 2.4-liter Gasoline Direct Injection engine – the most powerful naturally aspirated 4-cylinder in its class – delivers 200 horsepower and satisfies Ultra Low Emissions Vehicle standards with a segment-leading 35 mpg on the highway.<sup>1</sup> Twin-scroll turbocharging enables the Sonata 2.0T to best many of its V6 rivals with a game-changing 274 horsepower and 34-mpg highway rating. Sonata Hybrid goes even further, stretching fuel efficiency up to 40 mpg on the highway. Power is channeled through either a 6-speed manual or 6-speed automatic transmission with SHIFTRONIC,<sup>®</sup> a feature that allows sporty manual-style shift control via the shiftgate or steering-wheel paddle shifters. What better way to enjoy driving at the head of the pack?



### TWIN-SCROLL TURBOCHARGING

A twin-scroll turbocharger design recovers more energy from the exhaust than a traditional turbocharger. Other benefits of a twin-scroll design include improved throttle responsiveness, more low-end torque, lower emissions and improved fuel economy.



### RACE-INSPIRED PADDLE SHIFTERS

Sonata is engineered to satisfy driving enthusiasts who enjoy controlling the car's shift points. Available steering-wheel-mounted SHIFTRONIC paddle shifters on the SE let you control upshifts and downshifts of the 6-speed automatic transmission.<sup>2</sup>



### DUAL CVVT ENGINE

Dual Continuously Variable Valve Timing allows each engine intake and exhaust valve to be controlled independently. The result is improved response and fuel efficiency at all engine speeds, as well as a smooth idle and lower emissions.



### GASOLINE DIRECT INJECTION

With GDI, fuel is injected directly into the combustion chamber of each cylinder (as opposed to conventional fuel injection, where fuel is injected in the intake ports before each cylinder's intake valve). The result is markedly improved power and efficiency with cleaner emissions.



SONATA HYBRID ULTIMATE PACKAGE IN BLUE SKY METALLIC



## **BRAINS. BRAWN. BEAUTY. IT'S A HYBRID UNLIKE ANY OTHER.**

Maybe you've considered owning a hybrid vehicle, but didn't feel like compromising on style, size or power? Maybe the hefty hybrid premium seemed a bit too much? We felt the same way. So we designed Sonata Hybrid with more power, more comfort, and more style than the hybrids of yesterday. Fluidic lines and specially designed 17-inch alloy wheels deliver exceptional styling with best-in-class aerodynamics. Direct Hyundai Blue Drive provides optimum power with best-in-class highway fuel economy (up to 40 mpg highway) by operating on its electric motor, an Atkinson Cycle 4-cylinder engine, or both. A compact lithium polymer battery that fits in the trunk also gives Sonata Hybrid the largest passenger volume among midsize hybrid sedans – leaving plenty of room for passengers and an array of technology-laden features.



### **DIRECT HYBRID BLUE DRIVE**

Hyundai engineers paired an electric motor with a 2.4-liter DOHC 4-cylinder engine featuring an Atkinson Cycle for decreased friction loss and more miles per gallon. It generates a class-leading 206 combined horsepower and can operate up to 74 mph on battery power alone.<sup>1</sup> Unlike other hybrids, it also operates at freeway speeds for improved fuel economy.



### **ADVANCED BATTERY TECHNOLOGY**

Compared to nickel metal, our lithium polymer batteries are 25% lighter and 40% smaller with 10% more range. They also discharge more slowly, maintaining power up to 1.7 times longer than conventional hybrid batteries.



### **REGENERATIVE BRAKING**

Four-wheel disc brakes with ABS not only rein in speed – the regenerative braking system also recharges Sonata Hybrid's batteries on the road.



### **CENTRAL COMMAND**

Front and center in the cockpit are controls for dual automatic temperature control. An Infinity® audio system. HomeLink®, Blue Link™ and Bluetooth® hands-free phone controls. Touchscreen navigation. A hybrid technology display. And more.<sup>2</sup>



### **HEATED FRONT AND REAR SEATS**

Heated front and rear seats take the chill off cold mornings and brisk evenings – and may seem indispensable in colder climates.



SONATA LIMITED IN SHIMMERING WHITE

## WHEN IT COMES TO BEING A TOP SAFETY PICK, SONATA HAS EARNED ITS STRIPES. AND STARS.

The first midsize car to receive a 5-Star crash test rating<sup>1</sup> under the federal government's new, more stringent 2011 guidelines? It's the Hyundai Sonata, which was also named a Top Safety Pick by the Insurance Institute for Highway Safety.<sup>2</sup> Contributing to these ratings (and your peace of mind) are things like reinforced unibody construction, 4-wheel ABS brakes, airbags galore and an array of modern safety technologies fitted as standard equipment. Technologies like a Traction Control System that keeps your wheels from slipping under acceleration.<sup>3</sup> And Electronic Stability Control, which reduces understeer and oversteer for exceptional handling and cornering.<sup>4</sup> Brake Assist and Electronic Brake-force Distribution are also onboard to help Sonata come to a swift, sure stop. It's all part of how Hyundai instills driving confidence.



### SOPHISTICATED SUSPENSION

Sonata features sophisticated suspension and steering hardware with refined tuning for the GLS and Limited models – and sport-tuned suspension and steering for the SE trim.



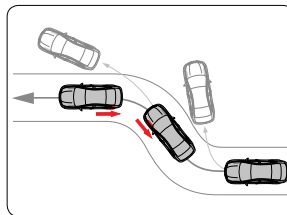
### ANTI-LOCK BRAKING SYSTEM

A powerful four-channel ABS system applies brake force independently to each wheel. Additional Brake Assist technology provides maximum braking force during emergency stops.



### ACTIVE FRONT HEAD RESTRAINTS

Designed to provide extra protection against whiplash in rear-end collisions, these restraints actually move up and forward to help brace against impact forces.



### ELECTRONIC STABILITY CONTROL

Handling is refined by Electronic Stability and Traction Control Systems that make thousands of calculations each second, adjusting brake and engine inputs as needed to ensure your vehicle remains on course. And you remain in command.




### SAFETY THROUGH STRENGTH. AND SMARTS.

A reinforced unibody constructed from high-tensile steel effectively absorbs collision energy. Rear crumple zones and reinforced side beams offer added layers of security, while an intelligent airbag system deploys and inflates front airbags in relation to driver/passenger height, weight and impact speed.<sup>5</sup>

<sup>1</sup>Government star ratings are part of the National Highway Traffic Safety Administration's (NHTSA's) New Car Assessment Program ([www.safercar.gov](http://www.safercar.gov)). <sup>2</sup>Based on Insurance Institute for Highway Safety 40-mph frontal crash test, 31-mph side-impact test, 20-mph rear-impact test and availability of Electronic Stability Control. <sup>3</sup>The Traction Control System is meant to enhance conscientious driving habits and is not a substitute for safe driving practices. <sup>4</sup>Electronic Stability Control (ESC) cannot control your vehicle's stability under all driving situations. ESC is not a substitute for safe driving practices. No system, no matter how advanced, can overcome physics or correct poor driving. The driver is always responsible for controlling the vehicle and must use caution to avoid loss of control in all driving conditions. Speed, road conditions and driver steering input will affect whether ESC can help prevent loss of control. See Owner's Manual for details. <sup>5</sup>The Supplemental Restraint System (SRS) is designed to work with the 3-point seatbelt system. The SRS deploys in certain frontal and/or side-impact conditions where significant injury is likely. The SRS is not a substitute for seatbelts, which should be worn at all times. Children under the age of 13 should be restrained securely in the rear seat. NEVER place a rear-facing child seat in the front seat of a vehicle that has a passenger-side airbag.

# WE'VE TAKEN AMERICA'S BEST WARRANTY EVEN FURTHER.

For over a decade, Hyundai has backed every car we've built with America's Best Warranty and this simple promise: Relax. We've got your back for the next 10 years or 100,000 miles. It's a commitment to customers that's evolved into Hyundai Assurance, an umbrella of services that includes 24/7 Roadside Assistance and much more. Visit [hyundaiassurance.com](http://hyundaiassurance.com) for details.

 HYUNDAI  
Assurance

## AMERICA'S BEST WARRANTY

POWERTRAIN LIMITED  
WARRANTY

10 YEARS  
100,000 MILES

NEW VEHICLE LIMITED  
WARRANTY

5 YEARS  
60,000 MILES

ANTI-PERFORATION  
WARRANTY

7 YEARS  
UNLIMITED MILES

24-HOUR  
ROADSIDE ASSISTANCE

5 YEARS  
UNLIMITED MILES



SONATA LIMITED IN SPARKLING RUBY

2012 SONATA LINE-UP

GLS

SE

LIMITED

HYBRID



POWER / PERFORMANCE	GLS	SE	LIMITED	HYBRID
2.4L Gasoline Direct Injection DOHC 4-cylinder engine with Dual Continuously Variable Valve Timing	S	S	S	–
2.0L Gasoline Direct Injection DOHC 4-cylinder engine with twin-scroll turbocharger	–	O	O	–
2.4L Atkinson Cycle 4-cylinder Hybrid engine	–	–	–	S
Hybrid Starter Generator and 270V Lithium Polymer battery	–	–	–	S
Permanent magnet high-power density motor	–	–	–	S
Fully parallel Hybrid Electric Vehicle system	–	–	–	S
Dual exhaust system with chrome tips	–	S	T	–
6-speed manual transmission	S	–	–	–
6-speed automatic transmission with SHIFTRONIC®	O	S	S	S
Steering-wheel-mounted paddle shifters	–	S	T	–
Active ECO system	O	S	S	–
Sport-tuned suspension and steering	–	S	–	–
16" steel wheels with full wheel covers	S	–	–	–
16" aluminum alloy wheels	O	–	–	S
17" aluminum alloy wheels	–	–	S	O
18" Hypersilver alloy wheels	–	S	T	–

COMFORT / CONVENIENCE	GLS	SE	LIMITED	HYBRID
Leather seating surfaces	–	–	S	O
Leather bolster with cloth inserts	–	S	–	–
Heated front and rear seats	–	–	S	O
Power driver seat with lumbar support	O	S	S	S
Leather-wrapped steering wheel and shift knob	–	S	S	O
Air conditioning with cabin air filter	S	S	S	S
Dual zone automatic temperature control	–	T	S	S
Steering wheel audio, hands-free phone and cruise controls	S	S	S	S
Tilt-and-telescopic steering wheel	S	S	S	S
Proximity keyless entry with push-button start	–	S	S	S
Remote keyless entry system with panic alarm	S	S	S	S
Advanced trip computer with custom settings	S	S	S	S
Automatic headlights	O	S	S	S
Auto dimming rearview mirror with compass	–	–	S	O
HomeLink® integrated transceiver	–	–	S	O

ENTERTAINMENT SYSTEMS	GLS	SE	LIMITED	HYBRID
AM/FM/SiriusXM®/CD/MP3 audio system	S	S	–	S
360-Watt Dimension® AM/FM/SiriusXM®/CD/MP3 audio system with external amp & subwoofer	–	O	S	–
400-Watt Infinity® AM/FM/SiriusXM®/CD/MP3 audio system with external amp & subwoofer	–	–	O	O
iPod®/USB and auxiliary input jacks	S	S	S	S
HD Radio® Technology with multicasting	–	O	S	O
Navigation system with 7" touchscreen and rearview camera	–	O	O	O
Blue Link™ telematics system	S	S	S	S
Bluetooth® hands-free phone system with phonebook transfer and audio streaming	S	S	S	S

SAFETY / SECURITY	GLS	SE	LIMITED	HYBRID
Electronic Stability Control with Traction Control System	S	S	S	S
4-wheel disc ABS with Brake Assist & Electronic Brake-force Distribution	S	S	S	S
6-airbag safety system with advanced dual front airbags and Occupant Classification System	S	S	S	S
Active front head restraints	S	S	S	S
Daytime Running Lights	S	S	S	S
Tire Pressure Monitoring System	S	S	S	S
Anti-theft system	S	S	S	S
Engine immobilizer	–	S	S	S

STYLE / FUNCTIONALITY	GLS	SE	LIMITED	HYBRID
Panoramic tilt-and-slide sunroof	–	–	S	O
Power tilt-and-slide sunroof	–	O	–	–
LED headlight accents and taillights	–	–	–	S
Front fog lights	–	S	S	S
Dark chrome front grille (Hybrid - unique, tinted chrome front grille)	–	S	S	S
Chrome accent exterior door handles	–	S	S	S
Side mirror turn signal indicators	–	–	S	S
Bodyside molding tinted chrome inserts	–	–	–	S
Glossy black door surround and outside mirror housing	–	–	–	O
Floor console-mounted rear vents	–	–	S	S
Premium door sill plates	–	–	S	O
Solar control glass	S	S	S	S

S = STANDARD O = OPTIONAL FEATURE T = 2.0T ONLY – = NOT AVAILABLE

EPA MILEAGE ESTIMATES: (CITY/HIGHWAY/COMBINED)	GLS	SE	LIMITED	HYBRID
2.4L 6-speed manual	24 / 35 / 28	–	–	–
2.4L 6-speed automatic	24 / 35 / 28	24 / 35 / 28	24 / 35 / 28	–
2.0T 6-speed automatic	–	22 / 34 / 26	22 / 34 / 26	–
2.4L Hybrid 6-speed automatic	–	–	–	35 / 40 / 37

## 2012 SONATA 2.4 GDI & 2.0T EXTERIOR & INTERIOR COLORS



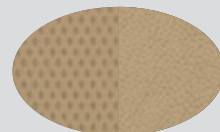
RADIANT SILVER



MIDNIGHT BLACK



PACIFIC BLUE PEARL



CAMEL LEATHER



GRAY LEATHER



WINE LEATHER



HARBOR GRAY METALLIC



SHIMMERING WHITE



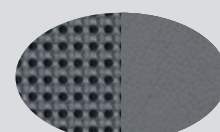
SPARKLING RUBY



BLACK LEATHER



BLACK LEATHER + CLOTH



GRAY LEATHER + CLOTH



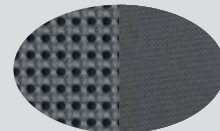
INDIGO NIGHT



IRIDESCENT SILVER BLUE PEARL



CAMEL CLOTH



GRAY CLOTH

## 2012 SONATA HYBRID EXTERIOR & INTERIOR COLORS



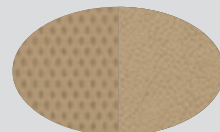
SILVER FROST METALLIC



HYPER SILVER METALLIC



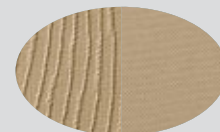
PORCELAIN WHITE PEARL



CAMEL LEATHER



GRAY LEATHER



CAMEL CLOTH



BLUE SKY METALLIC



BLACK ONYX PEARL



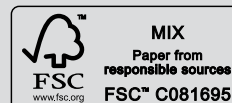
VENETIAN RED PEARL



GRAY CLOTH

Fuel economy estimated by EPA for comparison only. While the information contained in this brochure was correct at the time of printing, specifications and equipment can change. Feature comparisons based on competitor information available at the time of printing. No warranty or guarantee is being extended in this brochure, and Hyundai reserves the right to change product specifications and equipment at any time without incurring obligations. Some vehicles are shown with optional equipment. Specifications apply to U.S. vehicles only. Please contact your Hyundai dealer for current vehicle specifications.

As part of Hyundai's commitment to a sustainable environment, this brochure is printed using paper certified by the Forest Stewardship Council. FSC certification helps ensure that the highest social and environmental standards are met in the making of the paper we use, contributing to conservation, responsible management, and community level benefits for people near the forests.





**HYUNDAI**

NEW THINKING.  
NEW POSSIBILITIES.

**EXPLORE HYUNDAI.COM** | Be sure to visit our website, where you can build your own Sonata, locate a Hyundai dealer near you, and best of all - schedule a test drive.



**CONNECT WITH HYUNDAIUSA.COM/SOCIAL** | Become a fan of Hyundai on Facebook, follow us on Twitter, enjoy our latest videos on YouTube, and more.