

1991 SCOUPE



HYUNDAI



Getting seen in one is half the fun.

How good you look in a sleek new Scoupe may well become the best part of driving one. See how it gets noticed just standing still? Now, imagine how great you'll look sitting in the driver's seat. Going anywhere unnoticed is out of the question.

While the Scoupe was designed to attract attention, it was also made for the sheer joy of driving.

Once you hit the streets and open the throttle you'll discover the Scoupe is plenty nimble and plenty quick. It puts all the maneuverability of front-wheel drive and rack-and-pinion steering at your command.

Since the Scoupe was built to last, the good times will keep right on rolling. This car was

engineered to be dependable and stay reliable.

Now, if someone asks how you can afford such an extravagant car, simply answer quality doesn't have to be an extravagance. At least not when it's a Scoupe built by Hyundai.

After all, being seen in one is only half the fun. The other half is owning one.







Multiple pleasures.

The way a Scoupe moves has a great deal to do with the way it looks. Its nose is set low, widening out into a wedge-shaped body with smooth, flowing lines and soft sloping curves. This is a car with the looks to stand out from the crowd and the moves to match.

On the road, the fun kicks in when you start up the 1.5-liter engine with multi-port electronic fuel injection. Now, you're ready to take full advantage of that wind-slipping aerodynamic shape.

Scoupe's sleek, contemporary looks come accented with standard bronze-tinted glass and an optional sunroof that'll open your Scoupe to the sky. If you really want to make yours pop, try the Scoupe LS with its rear spoiler and optional aluminum alloy wheels for effect.

Those with an eye for pure aesthetics will greatly appreciate the range of bright, vibrant, contemporary colors your Scoupe comes dressed in: rich, glistening Mars Red; striking Bright Blue Metallic and fresh Chrome Yellow. All told, there are eight different colors to stir your soul and turn lots of heads.





Inner pleasure.

Slip inside and discover the modern, contemporary design of the new Scoupe LS. How can a car this sporty offer so much space and comfort?

Up front, fully reclining bucket seats are wrapped in glove-soft cloth. The driver gets the additional luxury of a six-way adjustable seat that can be fine-tuned to maximize comfort and minimize fatigue. In back, there's a 60/40 split rear fold-down seat that's equally accommodating to both people and cargo.

The instruments, designed to look good and read fast, include tachometer, trip odometer and digital quartz clock.

Controls for climate (including optional air conditioning), audio and other driving conveniences are all within easy reach.

No matter what your taste in music, Scoupe's audio system will keep you moving, even in bumper to bumper traffic. There's a super sounding 50-watt AM/FM stereo cassette with Dolby® B NR and four speakers that's standard on Scoupe LS. Better still, there's an optional 100-watt, AM/FM stereo cassette with Dolby® B NR and four premium speakers. And for the ultimate in music reproduction, Scoupe offers an available CD player.

To maximize driving convenience, Scoupe LS makes power windows, power steering, tilt steering column and power mirrors standard features.

Naturally, all this inner goodness comes at a price. Fortunately, it's likely to be a lot less than you'd expect. After all, buying a Scoupe should be just as much of a joy as driving one.





How Scoupe moves you.

If you like moving in the right crowd, this new Scoupe has the power to get you there, fast. Under its skin of sculptured steel is a 1.5-liter multi-port electronically fuel-injected engine that's got the spirit to accelerate your pulse while taking you places in style.

Gearred up for fun.

If shifting manually just isn't your style of driving, let the Scoupe sweep you away with its 4-speed electronically controlled automatic. It features a lock-up torque converter and over-drive. This sophisticated transmission even has a distinctive shift mode selector with a fuel efficient* ECONOMY mode or NORMAL mode for greater acceleration and passing power.

However, if you want the responsiveness that comes with a stick shift, the Scoupe can meet that driving need with a smooth and quick shifting five-speed overdrive transmission that's built to perform.

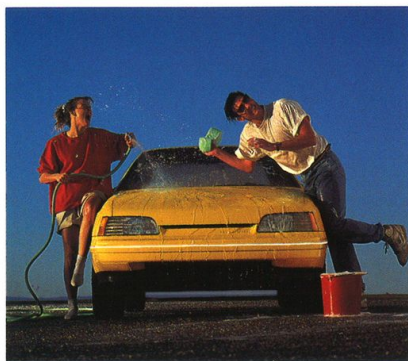
It takes curves with style.

Throw your Scoupe a curve and feel how nimbly it eases through. There are front and rear stabilizer bars for surefooted stability on even sharp switchback curves.

MacPherson strut independent front suspension and independent trailing arm rear suspension also combine to help smooth out your ride. Power rack-and-pinion steering is standard on the Scoupe LS to help give you the kind of road handling and manners that never go out of style.

Safety and security.

Hyundai's commitment to quality is matched by a concern for safety. Every Scoupe has seat belts for four, including dual 3-point shoulder harnesses in the rear. And all Scoupes have front seat passive restraint systems with lap belts for your protection. Always buckle up and wear your seat belts properly. Make certain your passengers do the same. It only makes sense to be safe when you're having fun.



Scoupe was designed and engineered to help you stay out of harm's way. Rack-and-pinion steering makes for smooth, responsive handling while the power-assisted dual-diagonal braking system with large vented front disc brakes helps give you confident stops when you need them. And Scoupe's expansive window area provides outstanding visibility all around.

To help protect your Scoupe, Hyundai offers a state-of-the-art security system, with an available remote control. So you can arm or disarm the system from outside your Scoupe.

And the quality to last.

To make Scoupe a lasting value, an extensive protective process ensures a long, beautiful life. The sheet metal is robotically welded. Sound deadeners are applied to isolate passengers from noise, and corrosion inhibitors guard against body panel rust. The entire structure is primed and surface coated, then a special electro-spray system lays on a deep coat of enamel paint. A tough clear coat covers metallic paints for added luster and protection. In addition, an anti-chip coating is applied to all lower body panels to help prevent stone chips from marring your Scoupe.

National Service Network.

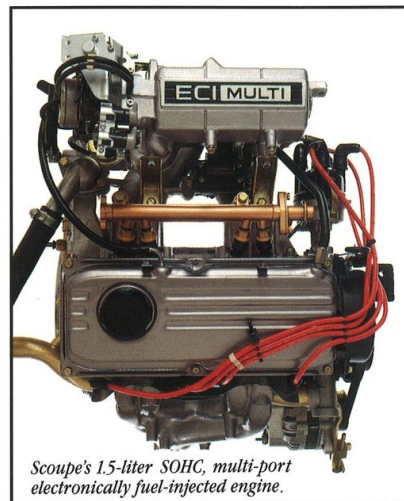
Wherever you drive, Hyundai Genuine Parts and Service won't be far away. You'll find a coast to coast network of Hyundai

full-service dealerships. Hyundai service technicians receive hands-on training from factory-certified instructors. So your Scoupe will be serviced quickly and efficiently. And every Hyundai dealer's parts department is linked by computer with the nearest Regional Parts Distribution Center. So you can be sure of getting Hyundai Genuine Parts quickly.

For your assurance.

A comprehensive Bumper to Bumper Limited Warranty reflects the care and quality that go into every single Hyundai. It offers protection for 36 months or 36,000 miles with no deductible required. And the Corrosion Perforation Limited Warranty against body panel rust-through runs for 36 months, without any mileage restriction.**

Every new Hyundai owner is automatically enrolled for one full year in the Hyundai Roadside Assistance program.*** For your total peace of mind, there's a nationwide, toll-free, 24-hour hotline you can call for information and roadside assistance. So you can drive your Scoupe, with complete confidence and assurance. Other benefits include trip-planning service; emergency towing service; key retrieval



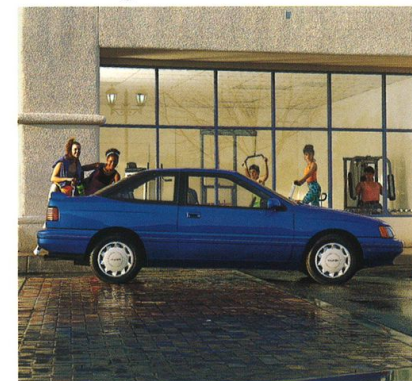
Scoupe's 1.5-liter SOHC, multi-port electronically fuel-injected engine.

system; discounts on hotels and rental cars and many other desirable features. See your Hyundai dealer for details.

Built to keep the upkeep down to a minimum.

When you buy a car for fun, the last thing you want to do is spend a lot of money keeping it on the road.

The new Scoupe is engineered to help keep maintenance costs down to an absolute minimum. Which makes Scoupe a highly affordable pleasure. So you save money buying it and driving it.

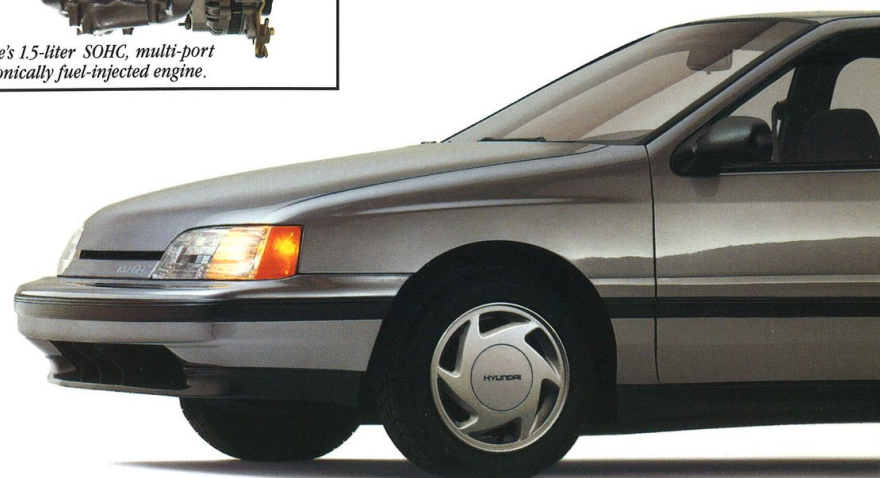


This is a car made to endure. It's built strong, tough and reliable. So it's ready to deliver year after year of dependable, worry-free ownership.

And in the final analysis, that's another part of what makes driving a Scoupe so much fun and owning one so satisfying.

**For complete details of these warranty programs, see your dealer for a copy of the warranty statement.

***Services provided by Cross Country Motor Club, Inc. Boston, MA 02155, except in California, where services are provided by Cross Country Motor Club of California, Inc. Boston, MA 02155.



*See EPA mileage estimates on the Specifications page.

1991 Hyundai Scoupe Specifications

Engine

Type	4-Cylinder Inline, SOHC
Displacement	1.5 Liter (1468 cc)
Fuel Delivery System	Multi-Port Electronic Fuel Injection (MPI)
Bore & Stroke	75.5 x 82.0 mm
Compression Ratio	9.4:1
Horsepower, SAE Net	81@ 5500 rpm
Torque (ft.-lbs.), SAE Net	91@ 3000 rpm

Transmissions

Manual	5-Speed Close Ratio w/Overdrive
Automatic	4-Speed Electronically Controlled w/Lock-Up Torque Converter, Overdrive & Dual Mode Selector

Electrical System

Battery	Maintenance-Free, 12 Volt-60 Amp/Hours
Alternator	75 Amps
Ignition System	Electronic

Frame

Construction	Unitized Body
--------------	---------------

Suspension

Front	Independent MacPherson Struts with Coil Springs and Stabilizer Bar
Rear	Independent Trailing Arm Type with Coil Springs and Stabilizer Bar

Steering

Type	Rack-and-Pinion STD on Scoupe Power-Assisted Rack-and-Pinion OPT on Scoupe, STD on LS
------	--

Brakes

System	Power-Assisted Dual Diagonal
Front	Ventilated Discs with Brake Wear Warning Sensors
Rear	Self-Adjusting Drums

Tires

STD on Scoupe (4)	P175/70R-13 All-Season Steel-Belted Radials
OPT on Scoupe,	P185/60HR-14 High Performance Michelin
STD on LS (4)	Steel-Belted Radials
Spare Tire	Compact Type

EPA Mileage Estimates

	City	Highway
5-Speed Manual Overdrive Transmission	26	34
4-Speed Automatic Overdrive Transmission	25	32

EPA Estimates for Comparison. Your actual mileage will vary with options, driving conditions, driving habits and vehicle's condition. See your dealer for details.

Accessories

Air Conditioning	Floor Mats—Colorkeyed and Carpeted
Alloy Wheels	Front End Mask
Block Heater	Security System
Compact Disc Player for Highline Stereo	• Passive
Console Armrest w/Cupholder	• Remote Upgrade
Door Edge Guards—Black	• Shock Sensor



Dimensions (Inches)

Exterior	Interior
Length	Headroom: Front/Rear
Width	Legroom: Front/Rear
Height	Shoulder Room: Front/Rear
Wheelbase	Hip Room: Front/Rear
Track: Front	
Track: Rear	

1991 Scoupe Trim Levels

Exterior Features

	Scoupe	LS
Antenna: Manual Telescopic	STD	STD
Body Side Moldings: Black	STD	—
Bodycolor w/Bright Inserts	—	STD
Bumpers: Bodycolor	STD	STD
Door Handles: Bodycolor	STD	STD
Exhaust: Dual w/Chrome Finishers	STD	STD
Glass: Bronze Tinted	STD	STD
Windshield Sunshade Band	STD	STD
Headlamps: Aerodynamic Halogen	STD	—
Mirrors: Dual Remote-Control—Black	—	STD
Dual Power Remote-Control—Bodycolor	—	STD
Spoiler: Rear	—	STD
Sunroof: Removeable Tilt-Up Glass Type w/Sunshade & Storage Bag	OPT	OPT
Wheel Covers: Standard	STD	—
Deluxe	—	STD
Wheels: 6-Spoke Aluminum Alloy	OPT	OPT
Wipers: Variable Intermittent	STD	STD

Interior Features

	Scoupe	LS
Air Conditioning	OPT	OPT
Ashtray: Front Illuminated	STD	STD
Cargo Area: Fully Carpeted Floor	STD	STD
Full Side Trim	STD	STD
Carpeted Side Trim	—	STD
Tie-Down Straps	STD	STD

Interior Features

	Scoupe	LS
Carpeting: Cut-Pile 10 oz.	STD	—
Cut-Pile 16 oz.	—	STD
Cigarette Lighter: Illuminated	STD	STD
Clock: Quartz Digital	STD	STD
Console: Full Center w/Coin Holder	STD	STD
Cupholder	—	STD
Defoggers: Front Side Windows	STD	STD
Defroster: Electric Rear Window w/Timer	STD	STD
Door Trim: Deluxe w/Cloth Inserts & Map Pockets	STD	STD
Gauges: Tachometer, Temperature & Trip Odometer	STD	STD
Glove Box: Illuminated & Lockable	STD	STD
Heater: Rotary Controls & Rear Seat Ducts	STD	STD
Illumination: Auto-Off Headlamps & Taillamps	STD	STD
Cargo Area	STD	STD
Overhead Courtesy & Map Lamps	STD	STD
Mirrors: Day/Night Rearview	STD	STD
Front Passenger Visor Vanity	STD	STD
Remote Releases: Hood, Fuel Door & Trunk Lid	STD	STD
Seat Belts: Front Passive Type (2)	STD	STD
Front Lap (2)	STD	STD
Rear 3-Point (2)	STD	STD
Seat Trim: Full Face Sport Cloth	STD	—
Full Luxury Cloth	—	STD
Seats: Driver's 6-Way Adjustable	—	STD
Front Reclining Buckets w/Adjustable Headrests	STD	STD
Passenger Side Walk-In Device	STD	STD
Rear 60/40 Split Fold-Down	STD	STD
Steering: Color-Keyed 3-Spoke Wheel	STD	STD
Soft Grip Type	—	STD
Power-Assisted	OPT	STD
Tilt Column	—	STD
Warning Lights: Door & Trunk Lid Ajar	STD	STD
Low Fuel	STD	STD
Windows: Power, Front	—	STD

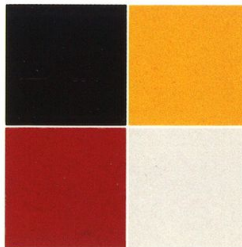
Specifications, equipment, and illustrations are based on information available at the time of printing and are subject to change without notice.

Option Package Availability

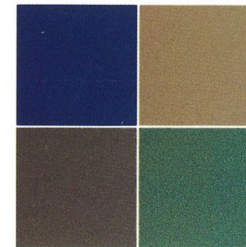
	Scoupe						LS			
	1	2	3	4	5	6	7	8	9	10
Audio Systems:										
AM/FM ETR Stereo Cassette w/4 Speakers	X	X	X							
Deluxe AM/FM ETR Stereo Cassette w/4 Speakers				X	X		STANDARD			
Highline AM/FM ETR Stereo Cassette w/4 Premium Speakers						X				X
Air Conditioning		X			X	X	X		X	X
Steering: Power			X	X	X	X	STANDARD			
Sunroof: Removeable Tilt-Up Glass Type w/Sunshade & Storage Bag				X	X	X		X	X	X
Tires: P185/60HR-14 High Performance Michelin Steel-Belted Radials				X	X	X	STANDARD			
Wheels: 6-Spoke Aluminum Alloys				X	X	X		X	X	X

Exterior Colors

Solid Black
Chrome Yellow
Mars Red
Noble White



Clearcoat Metallic
Bright Blue Metallic
Pebble Beige Metallic
Storm Gray Metallic
Teal Green Metallic



Note: See your dealer for specific model and interior color availability.



HYUNDAI