

2012 HYUNDAI **SANTA FE**



UNLIMITED POSSIBILITIES.



LIMITED IN MOONSTONE SILVER



2012 SANTA FE **REFINED VERSATILITY**

It was designed from the outset with a singular purpose in mind: Do it all. Without compromise. And look good doing so.

The 2012 Hyundai Santa Fe has arrived on a mission to impress at every turn, with fluid lines that convey confidence. Composure. And a taut, dynamic stance that implores you to twist the ignition key. Two state-of-the-art engines are available, each delivering exceptional fuel economy with brisk get-up-and-go.

Santa Fe comes in three distinct trim levels: The eco-efficient GLS, the sporty SE and the well-equipped Limited. Every model couples plenty of hauling power (up to 3,500 pounds on SE and Limited V6 models) with crisp, nimble handling. Each presents a spacious interior whose high-quality materials and fit-and-finish craftsmanship are as evident as its modern-day conveniences.

Complimenting Santa Fe's sleek styling is a long list of award-winning safety features and America's Best Warranty, which adds security and peace-of-mind to every Santa Fe we build right here in the USA.

276^{HP}
26^{MPG}

276 HP and 26 MPG estimates from Santa Fe 3.5L V6 engine, 26 MPG is a highway rating.



LIMITED AWD WITH NAVIGATION PACKAGE IN BEIGE LEATHER

LIFE JUST SEEMS TO FIT IN A SANTA FE.

The only thing constant today is change. Shifting family schedules require a vehicle that can keep up. Fortunately, when there's a Santa Fe parked in the driveway, life just seems to fit. Inside, a tilt-and-telescopic steering wheel places Bluetooth® hands-free phone, audio and cruise controls at your fingertips,¹ while iPod®/USB/aux jacks let you plug into your personal playlists.² Up top, versatile roof rails let you tote the gear you need for your next adventure.³ Choose Santa Fe SE, and an 8-way power driver seat lets you dial in comfort with power-adjustable lumbar support. Move up to Santa Fe Limited, and you'll find leather seating surfaces with heated front seats. A 605-Watt Infinity® Logic 7® Surround Sound AM/FM/SiriusXM™/6-CD changer audio system with 10 premium speakers.⁴ Dual-zone automatic temperature control with a CleanAir Ionizer. And a power glass sunroof that reveals wide patches of blue sky. Life is good in a Santa Fe.



VERSATILE SEAT CONFIGURATIONS

A wide track puts the Hyundai Santa Fe near the head of its class in roominess. More than 108 cubic feet of passenger volume can be configured to comfortably accommodate five on a family road trip, make a haul of home furnishing purchases...and much more.



HOMELINK®

Garage doors, gates, home lighting and security systems can all be operated at the touch of a button with HomeLink, which is integrated into Santa Fe Limited's auto-dimming rearview mirror.⁵



ADVANCED NAVIGATION

Available touch-screen navigation does more than plot your course and respond to voice commands. It also offers up points of interest, delivers XM NavTraffic® updates and connects with a rearview camera to improve safety and ease parking in tight spaces.⁶

¹The Bluetooth® wordmark and logos are registered trademarks owned by Bluetooth SIG, Inc., and any use of such marks by Hyundai is under license. Other trademarks are those of their respective owners. ²iPod® is a registered trademark of Apple Inc. ³Roof side rails optional on GLS model. ⁴Infinity® is a registered trademark of Harman International Industries, Inc. ⁵HomeLink® is a registered trademark of Johnson Controls, Inc. ⁶SiriusXM™ Satellite Radio and XM NavTraffic® require a SiriusXM subscription, sold separately after complimentary introductory period. All fees and programming subject to change. Traffic and weather channels only available in select markets, and SiriusXM service only available in the 48 contiguous United States. See your dealer for details. The SiriusXM name is a registered trademark of SiriusXM Satellite Radio Inc. All other trademarks are property of their respective owners.



LIMITED IN MOONSTONE SILVER

A HEART FULL OF SMARTS.

While the engine is widely considered to be the heart and soul of a vehicle, it's easy to see why the 2012 Santa Fe's two powerplants might be considered the brains as well. Our 16-valve, all-aluminum Theta four-cylinder engine employs Variable Intake System and Continuously Variable Valve Timing technologies to deliver up to 28 mpg on the highway with a ULEV emission rating.¹ Santa Fe's 3.5-liter V6 goes even further, hustling from 0-60 mph in 7.5 seconds² while generating 276 horsepower with an equally stellar 26-mpg highway rating. Power is transferred onto the pavement through a 6-speed SHIFTRONIC[®] automatic transmission and 18-inch alloy wheels on SE and Limited models. Available All Wheel Drive routes this power to the wheels with the best traction at the press of a button, while an advanced braking system with new Downhill Brake Control helps navigate steep descents with confidence.



TIGHT TURNS, NO WORRIES

Santa Fe's versatile suspension geometry and wide track width enable greater turn angles and a 35.4-foot turning radius that ranks as one of the best in its class – perfect for times when you're trying to scoop that last parking spot at the mall.

PLENTY OF PULL

A Trailer Prep Package (standard on SE and Limited V6 models) includes a transmission cooler, upgraded radiator and trailer pre-wiring, all of which enable Santa Fe SE and Limited V6 models to tow up to 3,500 pounds.³



SMOOTH PRECISION

Santa Fe features a precisely tuned, fully independent suspension that improves dynamic control as effortlessly as it swallows bumps in the road. Power-assisted rack-and-pinion steering also contributes to the Santa Fe's nimble feel behind the wheel.



6-SPEED AUTOMATIC TRANSMISSION

A 6-speed electronically controlled automatic transmission offers state-of-the-art shifting, seamlessly matching engine speed to the appropriate gear for each driving condition.

¹EPA estimates for comparison only. Your actual mileage will vary with options, driving conditions, driving habits and vehicle's condition.

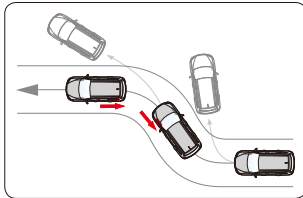
²Edmunds.com/hyundai/santa-fe/2011. ³See the towing guide in your Owner's Manual for proper use.



LIMITED AWD IN SIERRA RED

THINK SANTA FE IS A TOP PICK? YOU'RE NOT ALONE.

The Hyundai Santa Fe has consistently been chosen as a Top Safety Pick by the Insurance Institute for Highway Safety (IIHS).¹ What drives this exceptional safety record? Rugged unibody construction, which contributes to Santa Fe's exceptional crash test ratings and sure-footed handling. Front and rear crumple zones, side-impact door beams and hood-buckling creases, which absorb the energy of a collision and help keep the passenger compartment safely intact. Six airbags are also onboard: Two in front, two front-side and two roof-mounted side curtain airbags with rollover sensors.² To help you avoid collisions in the first place, Santa Fe is packed with active safety advances like Electronic Stability Control and a Traction Control System that both work in the background to keep you faithfully on course.



TRACTION AND CONTROL

Electronic Stability Control (ESC) and Traction Control System (TCS) work in tandem to help prevent skids and maintain optimal traction. ESC compares the driver's intended course to the vehicle's response and, when needed, adjusts throttle inputs and brake pressure to individual wheels to reduce plowing and fishtailing.³



BLINK-QUICK BRAKING

Emergency braking can cause your wheels to lock and skid, resulting in a loss of steering control when you need it most. Santa Fe's standard ABS includes Brake Assist, which applies maximum braking force the instant a panic stop is detected, and Electronic Brake-force Distribution, which balances braking forces at each wheel to maintain traction during dynamic load transfers.



ACTIVE HEAD SUPPORT

Even the best drivers can do little to avoid rear-end collisions. Active front seat head restraints move forward and up during a rear impact to help minimize whiplash.



360-DEGREE SAFETY

When its sensors detect a rollover is imminent, Santa Fe triggers side curtain airbags and seatbelt pretensioners to help protect passengers. According to the IIHS, the combination of side and curtain airbags can reduce fatalities by 52% in SUVs.

¹Based on Insurance Institute for Highway Safety 40-mph frontal crash test, 31-mph side-impact test, 20-mph rear-impact test and availability of Electronic Stability Control (ESC). ²The Supplemental Restraint System (SRS) is designed to work with the 3-point seatbelt system. The SRS deploys in certain frontal and/or side-impact conditions where significant injury is likely. The SRS is not a substitute for seatbelts, which should be worn at all times. Children under the age of 13 should be restrained securely in the rear seat. NEVER place a rear-facing child seat in the front seat of a vehicle that has a passenger-side airbag. ³Electronic Stability Control (ESC) cannot control your vehicle's stability under all driving situations. ESC is not a substitute for safe driving practices. No system, no matter how advanced, can overcome physics or correct poor driving. The driver is always responsible for controlling the vehicle and must use caution to avoid loss of control in all driving conditions. Speed, road conditions and driver steering input will affect whether ESC can help prevent loss of control. See Owner's Manual for details. The Traction Control System (TCS) is meant to enhance conscientious driving habits and is not a substitute for safe driving practices.

GLS



SE



LIMITED



POWER / PERFORMANCE	GLS	GLS V6	SE	Limited
3.5L DOHC V6 engine with Continuously Variable Valve Timing	-	S	S	0
2.4L Theta II DOHC 4-cylinder engine with Continuously Variable Valve Timing	S	-	-	S
6-speed automatic transmission with SHIFTRONIC® manual shifting	S	S	S	S
17-inch aluminum alloy wheels	S	S	-	-
18-inch aluminum alloy wheels	-	-	S	S
Trailer Prep Package (V6 models only)	-	-	S	S

COMFORT / CONVENIENCE	GLS	SE	Limited
Leather seating surfaces	-	-	S
Leather/cloth seating surfaces	-	S	-
Heated front seats	-	AWD	S
Power driver seat with lumbar support	-	S	S
Leather-wrapped steering wheel and shift knob	-	S	S
Dual zone automatic temperature control with outside temp display and CleanAir Ionizer	-	-	S
Air conditioning with cabin air filter and 2nd row air vents	S	S	S
Power windows with driver auto down/up	S	S	S
Power door and tailgate locks	S	S	S
Steering wheel audio, hands-free phone and cruise controls	S	S	S
Tilt-and-telescopic steering wheel	S	S	S
Keyless entry system with panic alarm	S	S	S
Sun visors with illuminated vanity mirrors	S	S	S
Rear-folding 60/40 split seats	S	S	S
Windshield wiper de-icer	-	S	S
Automatic headlights	-	S	S
Auto dimming rearview mirror with compass	-	S	S
HomeLink® integrated transceiver	-	-	S
Rear cargo area 115-volt power outlet (V6 models only)	-	-	S

ENTERTAINMENT SYSTEMS	GLS	SE	Limited
AM/FM/XM®/CD/MP3 6-speaker audio system with iPod®/USB/aux jacks	S	S	-
360-Watt premium audio system with external amp & subwoofer	-	0	-
605-Watt Infinity® Logic 7® audio system with 6-CD changer and 10 speakers	-	-	S
Navigation system with 6.5" screen and rearview camera (replaces audio head unit)	-	0	0
3 month pre-paid XM® Satellite Radio subscription (not available in Alaska/Hawaii)	S	S	S
Bluetooth® hands-free phone system	S	S	S

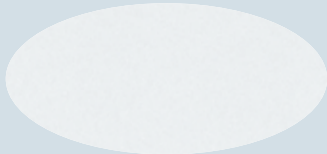
SAFETY / SECURITY	GLS	SE	Limited
Electronic Stability Control with Traction Control System	S	S	S
4-wheel disc Anti-lock Braking System with Brake Assist & Electronic Brake-force Distribution	S	S	S
Advanced front, enhanced front-side & rollover-sensing side curtain airbags	S	S	S
Active front seat head restraints and auto-fold 2nd row head restraints	S	S	S
Tire Pressure Monitoring System	S	S	S
Downhill Brake Control	S	S	S
Fog lights	-	S	S

STYLING / FUNCTIONALITY	GLS	SE	Limited
Power tilt-and-slide sunroof	-	0	S
Chrome accent exterior door and liftgate handles	-	-	S
Deluxe metal accent door scuff plates	-	-	S
Bodycolor heated side mirrors	-	S	S
Roof rack side rails	S	S	S
Roof rack cross rails	-	S	S
Bodycolor rear spoiler with integrated LED brake light	-	S	S
Front solar control glass and rear privacy glass	S	S	S

S = STANDARD 0 = OPTIONAL FEATURE - = NOT AVAILABLE

EPA MILEAGE ESTIMATES: (CITY/HIGHWAY/COMBINED)	2.4L (175HP)	3.5L (276HP)
Front Wheel Drive	20 / 28 / 23	20 / 26 / 23
All Wheel Drive	20 / 25 / 22	20 / 26 / 22

EXTERIOR COLORS



GLACIER WHITE



MOONSTONE SILVER



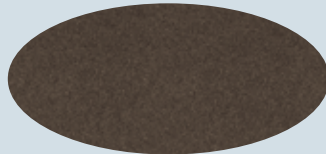
MINERAL GRAY



SIERRA RED



BLACK FOREST GREEN



CABO BRONZE
(Delayed Availability)

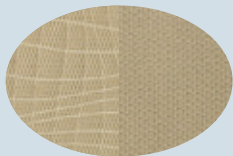


PACIFIC BLUE PEARL

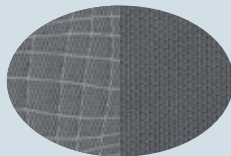


TWILIGHT BLACK

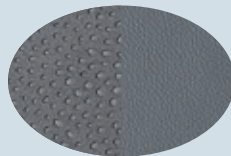
INTERIOR COLORS



BEIGE CLOTH



GRAY CLOTH



GRAY LEATHER
BOLSTER / CLOTH



COCOA BLACK LEATHER
BOLSTER / CLOTH



BEIGE LEATHER



COCOA BLACK LEATHER

AMERICA'S **BEST WARRANTY**

10 YEARS
100,000 MILES

POWERTRAIN LIMITED WARRANTY

5 YEARS
60,000 MILES

NEW VEHICLE LIMITED WARRANTY

7 YEARS
UNLIMITED MILES

ANTI-PERFORATION WARRANTY

5 YEARS
UNLIMITED MILES

24-HOUR ROADSIDE ASSISTANCE

See dealer for LIMITED WARRANTY details.

 **HYUNDAI**
Assurance


For over a decade, Hyundai has backed every car we've built with America's Best Warranty and this simple promise: Relax. We've got your back for the next 10 years or 100,000 miles. It's a commitment to customers that's evolved into Hyundai Assurance, an umbrella of services that includes 24/7 Roadside Assistance and more. Visit www.hyundaiassurance.com for details.

Fuel economy estimated by EPA for comparison only. While the information contained in this brochure was correct at the time of printing, specifications and equipment can change. Feature comparisons based on competitor information available at the time of printing. No warranty or guarantee is being extended in this brochure, and Hyundai reserves the right to change product specifications and equipment at any time without incurring obligations. Some vehicles are shown with optional equipment. Specifications apply to U.S. vehicles only. Please contact your Hyundai dealer for current vehicle specifications. As part of Hyundai's commitment to a sustainable environment, this brochure is printed using paper certified by the Forest Stewardship Council. FSC certification helps ensure that the highest social and environmental standards are met in making the paper we use, contributing to conservation, responsible management, and community benefits for people near the forests.



 **HYUNDAI** | NEW THINKING.
NEW POSSIBILITIES.

EXPLORE HYUNDAI.COM | Be sure to visit our website, where you can build your own Santa Fe, locate a Hyundai dealer near you, and best of all - schedule a test drive.

 Become a fan of Hyundai at
[facebook.com/hyundai](https://www.facebook.com/hyundai)

 Follow us on
[twitter.com/hyundai](https://www.twitter.com/hyundai)

©2011 HYUNDAI NP020-72012