

IONIQ electric



One car.
Three different
powertrains.

Offering a choice of three different electrified powertrains that share the same sleek, modern design and purpose-engineered platform is a world first. Each of these powertrains adheres to Hyundai's unique philosophy: quite simply, electrified cars should offer all the dynamic ride and handling characteristics that make driving a pleasure.



IONIQ Plug-in Hybrid

will join the line-up soon, combining all the advantages of the IONIQ Hybrid with up to 50 km emissions-free electric driving. It can be charged from an external power source.

IONIQ Hybrid

combines a high-efficiency petrol engine and torque-rich electric motor with a sporty 6-speed Dual Clutch Transmission for driving that's both economical and enjoyable.

IONIQ Electric

is driven by a potent, torque-rich electric motor powered by a high-capacity Lithium-Ion Polymer battery for 280 km emissions-free driving.

Inspirational design. Created by emotion.

Sleekly alluring, the IONIQ Electric possesses an elegant presence from every angle. Its smooth lines and balanced proportions express an inspiring blend of all-electric performance and energy efficiency.

Even the specially developed alloy wheels contribute to the superb overall aerodynamic performance. The unique contrasting grille panel embraces the dynamically styled LED headlamps, and the front bumper is highlighted by eye-catching LED daytime running lights and the signature copper lower lip.



Experience IONIQ in 3D!

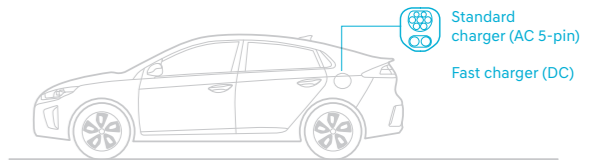
Download the IONIQ 3D app in the App Store.
For Android devices please visit the Google Play Store.





The future has arrived. And it's emissions-free.

IONIQ Electric is the zero-emissions car that both tames the wind and electrifies the senses. A drag coefficient of just 0.24 and an innovative electric powertrain make it a truly rewarding drive. And it's a thoroughly practical five-seater that you can enjoy every day on journeys short and long.



LED headlamps

A win-win situation: LED headlamps improve night vision with higher light output while requiring less energy than conventional lamps.



Adaptive Smart Cruise Control

Behind the Hyundai emblem on the aerodynamically styled grille panel is the sensor for the Adaptive Smart Cruise Control.



Charging port

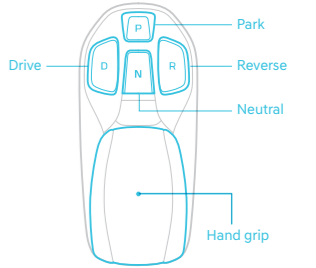
Behind a single access flap are two charge ports. One for connection to a standard household socket or public charging station. The other port is for use with Fast Charging stations that can charge up to 80% in only 23 minutes.





Innovative thinking. Electrifying performance.

The inspirational design of the IONIQ Electric is matched by its whisper-quiet, fully electric powertrain. Starting from standstill is a revelation thanks to the instant torque provided by the electric motor. And overall performance can be adjusted on the move by selecting Eco, Normal or Sport drive mode. When coasting or braking the electric motor generates energy to recharge the battery.



ECO, NORMAL and SPORT drive modes

The NORMAL drive mode is augmented by an ECO mode that maximizes energy efficiency, and a SPORT mode that puts an extra 30 Nm torque under your foot to reach a maximum of 295 Nm.

Regenerative braking control

Modulating the degree of regenerative braking is enabled by the conveniently located paddles on the steering wheel.

Shift by wire

Intelligently grouped buttons on the Centre Console simplify electronic control of major driving functions.





Lithium-Ion Polymer battery

The high energy density of the lightweight and compact 28 kWh battery delivers more performance and greater driving range. Its location in the floor lowers the centre of gravity for better handling characteristics. It is backed by an extended 8-year warranty.*

*The battery warranty extends to 8-years, or 200,000 km, whichever occurs first.

Up to 280km on a single charge



Driving range

Up to 280 km of emissions-free driving can easily accommodate the daily commute or even a weekend break. The available driving range at any time is clearly displayed on the supervision display.



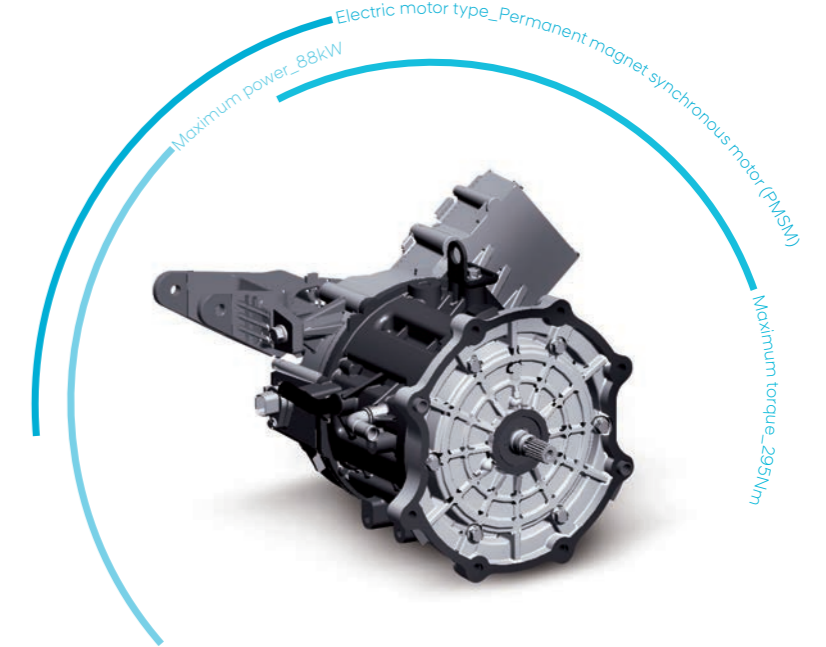
High torque at the wheels

The single-speed reduction gear translates the output of the electric motor to deliver exceptionally high torque whenever you need it.



High-strength, low-weight

The intelligent use of lightweight aluminium and ultra-high-strength steel results in a robust structure that provides great stability and enjoyably agile handling.

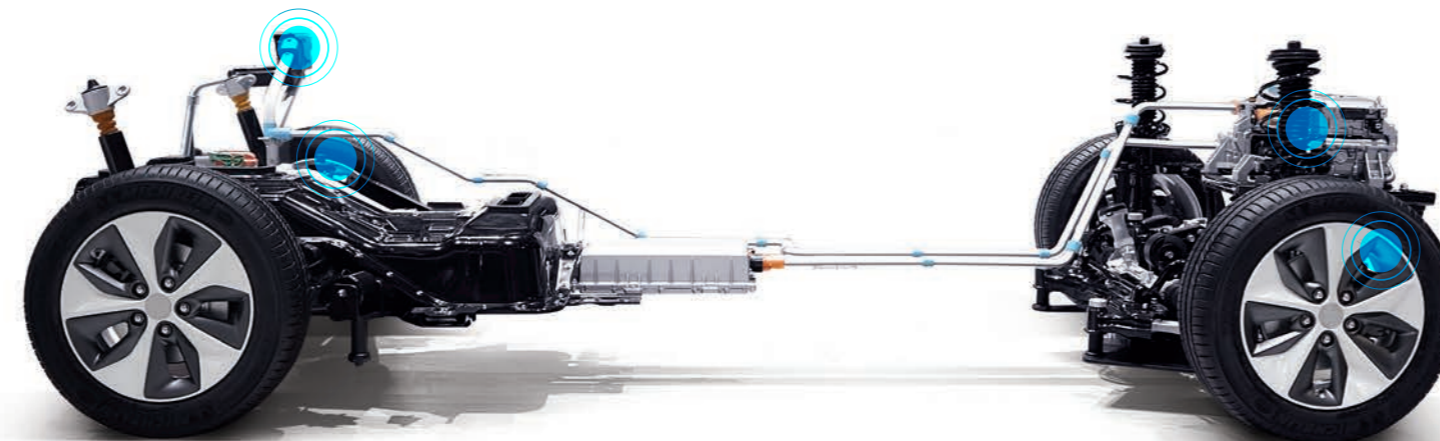


Electric motor

The high-power electric motor develops 88 kW and a maximum torque of 295 Nm from start-up, for impressive acceleration especially at low speeds.

Intelligent engineering. Innovative solutions.

The carefully matched components of the electric powertrain have been engineered to provide excellent driving characteristics and a practical everyday driving range.



Driving distance, battery range and driving efficiency calculations are based on estimations and will vary based on individual driving circumstances and road conditions. Vehicle charging time and speed will depend on final electricity output of selected charging facility. Quick charge option offers 80% battery charge in 23 minutes (100 kW).

Simply pure. Purely simple.

The clean and spacious interior of the IONIQ Electric is charged with modern design purity. It is evident in the intuitive simplicity and clarity of all instruments, and controls which are pleasant to the touch. The D-cut steering wheel and the signature copper décor elements add a sporty look.

Digital instrument cluster

The high-resolution colour display communicates information including speed, state of battery charge and energy usage. The style and colour of the 7" display reflects the selected drive mode, ECO, Normal or Sport.

ECO mode shown.



Wireless charging for smartphones

Compatible smartphones can be charged wirelessly via the integrated charge pad.** A helpful alert will be triggered should the phone be left behind.

** Non-compatible smartphones require a wireless charging adapter.



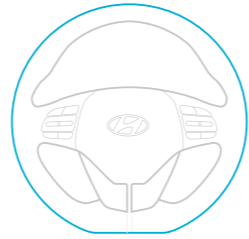
Connected

High levels of connectivity are accessed via the central 8" full-colour touch-screen. Apple CarPlay*, Android Auto* and the totally new navigation platform entertain and inform through every journey.

* Apple CarPlay™ is a registered trademark of Apple Inc.
Android Auto™ is a registered trademark of Google Inc.



D-cut steering wheel



Advanced protection. Smart technology.

In addition to the protection provided by 7-airbags, all occupants benefit from a comprehensive line-up of advanced driver assistance technologies. Its cameras, radar and ultrasonic sensors help keep the IONIQ Electric safely on the right track.

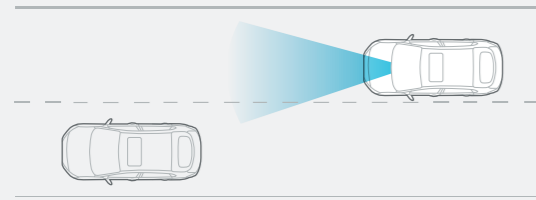


Seven airbags

Occupants are protected by a total of seven airbags. This includes a knee airbag for the driver.

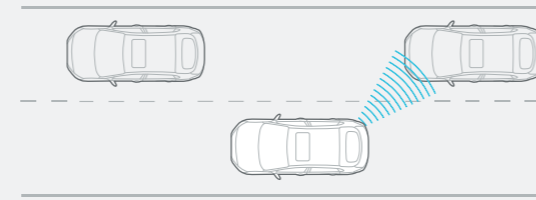
Lane keeping assist system (LKAS)

Warns the driver of unintended departure from the chosen traffic lane and applies corrective steering if necessary.



Blind spot detection (BSD)

Rear radar sensors detect the proximity of other vehicles when changing lanes. Rear Cross Traffic Alert uses the same sensors to detect approaching vehicles when backing out of parking spaces.



Automatic emergency braking (AEB)

When a potential collision with a vehicle or pedestrian is detected, AEB first gives a visual and an audible warning, then intervenes with partial or complete brake application.



Adaptive Smart Cruise Control (ASCC)

Maintains a set distance to the preceding vehicle, automatically reducing or increasing speed up to a pre-set limit. In "stop & go" traffic, the pre-determined distance is always maintained. Restarting after a stop phase is activated by light pressure on the accelerator pedal.





Perfection in detail. Quality in everything.



Chrome door handles



Power sunroof



Chrome scuff plates



Infiniti premium sound system



Ventilated front seats



Front and rear seat heating



8" navigation system



In-Cable Control Box

Exterior colors



Polar white (WAW)



Platinum silver (T8S)



Aurora silver (TS7)



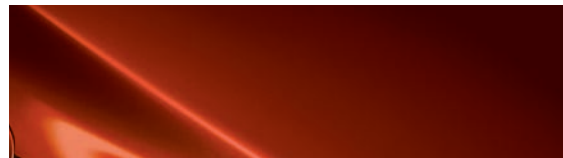
Phantom black (NKA)



Blazing yellow (WY7)



Marina blue (N4B)

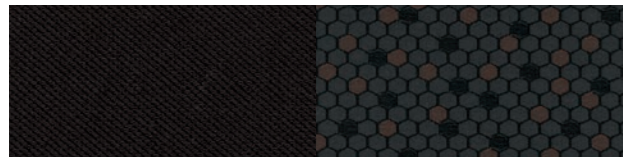


Phoenix orange (RY9)

Interior colors



Leather



Woven



Wheels



16" alloy wheels

Specifications

Electric Motor

Type	Permanent-magnet synchronous motor (PMSM)
Max. power (kW)	88
Max. torque (Nm)	295
Battery capacity (kWh)	28
CO2 range (g/km)	0

Dimensions

Head room (mm)	Front/rear (w/o sunroof)	994/950
Leg room (mm)	Front/rear	1,073/906
Shoulder room (mm)	Front/rear	1,425/1,396
Luggage capacity (ℓ)	Up to roof	455
	Rear seats down, up to roof	1,410

Fuel consumption in MPG (l/100km) for IONIQ Electric range: 0.0 (0.0). CO2 Emissions 0g/km. These official EU test figures are to be used as a guide for comparative purposes and may not reflect all driving results.

Unit : mm



Overall width 1,820
Wheel tread 1,555



Overall length 4,470
Wheel base 2,700

Overall height

1,450



Wheel tread 1,564

Dealer stamp



All the information contained in this brochure is provisional and subject to change without notice and is intended only as preliminary notification. Possible variations in the representation of vehicle colours are due to the limitations of printing technology. The products shown correspond to the offer and the range of equipment for European markets. The vehicles shown in this brochure may be equipped with additional equipment at extra cost, and not all model versions are included in this brochure. Hyundai Motor Europe reserves the right to make changes to technical specifications and equipment content without notice. Please consult your Hyundai dealer for exact details. Hyundai provides a 5 Year Unlimited Mileage Warranty. *On the IONIQ Lithium-Ion-Polymer battery Hyundai provides an 8 year or 200.000 km Battery Warranty, whichever occurs first. For the 5 Year Unlimited Mileage Warranty and Battery Warranty certain terms and exclusions apply. For detailed information on these terms and exclusions, please refer to your local Hyundai website or consult a Hyundai dealership.