



GENESIS  
COUPE  
2016



# NEW THINKING. NEW POSSIBILITIES.

Status quo is nothing more than a starting point for our research and development. Through new thinking we continue to uncover new territories in innovation, engineering and design. A vehicle is no longer simply a means of transportation; it is an extension of you. By questioning and not simply accepting convention, we continue to push the boundaries to provide new possibilities and experiences that go beyond your expectations.

This is the [H-Factor](#).



3.8 GT model shown.

## ENGINEERED TO PERFORM

The 2016 Genesis Coupe invigorates its class with aggressive, bold styling. But the real story is under the hood, where every Genesis Coupe comes equipped with a Gasoline Direct Injection V6 engine developing 348 horsepower and 295 lb-ft of torque\*. With impressive rear-wheel drive dynamics and available features like high-performance Brembo® brakes, simply put, the Genesis Coupe is engineered to perform with confidence.



3.8 GT model shown.

## STYLE THAT MAKES A POWERFUL STATEMENT

Every line, every curve and every angle exudes a sense of power. Available HID headlights come together in a bold and striking fashion with an aggressive front fascia featuring defined hood lines and a blacked out front grille. The signature drop-beltline rear windows give the driver better over-the-shoulder visibility, while the strong character lines also act to emphasize the muscular wheel arches. Adding to the sporty style are cleanly-integrated dual exhaust outlets which produce a truly riveting sound.



3.8 R-Spec model shown.



AVAILABLE HID HEADLIGHTS



AVAILABLE 19-INCH ALLOY WHEELS



STANDARD LED TAIL LIGHTS

# OUTER BRAWN: INNER BEAUTY

The aggressive exterior styling of the 2016 Genesis Coupe is complemented by an upscale interior design featuring a variety of premium features and technologies. Vital information is available at a glance thanks to a full complement of readouts that include an electroluminescent instrument cluster and three centre stack-mounted gauge monitors with instant fuel consumption, oil temperature and torque readouts. The fully-adjustable front bucket seats are both supportive and comfortable on long drives. For even greater lateral support, the enthusiast-focused 3.8 R-Spec model features high-performance bucket seats with larger thigh and shoulder bolstering. A variety of comfort and convenience equipment includes everything from a thick leather-wrapped steering wheel with standard Bluetooth® controls, to an available 10-speaker 360-watt Infinity® audio system, rearview camera and rear parking assistance sensors.





## POWER MEETS PERFORMANCE

Hyundai engineers have achieved a blood-pumping 348 horsepower\* from the standard 3.8L Gasoline Direct Injection (GDI) V6 engine. For maximum driver involvement, the Genesis Coupe comes equipped with a standard 6-speed manual gearbox or an available 8-speed automatic transmission with a SHIFTRONIC® manual mode accessible at your fingertips through steering wheel-mounted shift paddles. A leather-wrapped gear shifter and available aluminum pedals put you in control of the exceptional rear wheel drive dynamics, delivering a 56:44 front-to-rear weight distribution for outstanding handling and balance.

# EVEN THE SAFETY IS EXHILARATING

Engineered to perform when you need it the most, the Genesis Coupe is equipped with an array of active and passive safety technologies. Standard features include an Anti-lock Braking System (ABS) with Electronic Brake-force Distribution (EBD) to maximize braking control and Electronic Stability Control (ESC) with Traction Control System (TCS)<sup>2</sup> to help keep you on your intended path in oversteer and understeer conditions. From the high-strength steel body and active front head restraints, to the six standard airbags<sup>1</sup> – front impact (2), front seat-mounted side impact (2), and front/rear side impact curtains (2) – the Genesis Coupe provides added peace of mind.



3.8 GT model shown.

# 2016

## GENESIS COUPE FEATURES



### STANDARD ALLOY WHEELS

The Genesis Coupe Premium arrives equipped with 18-inch aluminum alloys with a bold silver finish, while the Genesis Coupe R-Spec and GT models come standard with 19-inch aluminum alloys in a dark graphite finish (available 19-inch wheels shown).



### 10-SPEAKER INFINITY® PREMIUM AUDIO SYSTEM

If the standard 6-speaker audio system isn't powerful enough, we've got you covered. The available 360-watt Infinity® audio system with external amplifier and ten speakers, including a subwoofer, fills the Genesis Coupe with a clean, crisp sound.



### 8-SPEED AUTOMATIC TRANSMISSION WITH SHIFTRONIC®

Genesis Coupe Premium and GT models are available with an 8-speed automatic transmission featuring a paddle-shift SHIFTRONIC® manual mode and lock-up torque converter for improved highway fuel economy. A smooth shifting 6-speed manual gearbox is standard.



### LIMITED SLIP DIFFERENTIAL

The available Torsen®-type Limited Slip Differential (LSD) is a performance and handling component designed to automatically shift torque, when required, to whichever drive wheel has the most traction.



### 348 HORSEPOWER V6 ENGINE

The 2016 Genesis Coupe is equipped with an all-aluminum 3.8L V6 engine using Gasoline Direct Injection (GDI) and Dual Continuously Variable Valve Timing (D-CVVT) to develop 348 horsepower and 295 lb-ft of torque\*.



### STANDARD 6-INCH TOUCH-SCREEN AND STEERING WHEEL-MOUNTED CONTROLS

A standard 6-inch colour touch-screen audio display lets you control music streaming from your smartphone, tune into SiriusXM™ radio with our 90-day complimentary subscription and talk to family and friends with the Bluetooth® hands-free phone system. Standard steering wheel-mounted audio and cruise controls provide even greater convenience.



### AVAILABLE XENON HID HEADLIGHTS

Available Xenon HID headlights cast bright white light, enhancing contrast and visibility. With no physical filament to burn out, HID lights last longer than conventional lighting systems. Furthermore, a self-leveling ballast system maintains an optimal lighting position regardless of luggage and passenger weight distribution. LED Daytime Running Lights (DRL) are also available, giving you even more visual presence on the road.



### R-SPEC PACKAGE

Performance enthusiasts will rejoice in the standard features and specs of the R-Spec model. Large Brembo® brakes provide confident stopping power, while 19-inch aluminum alloy wheels wear high-performance summer tires to deliver the full benefits of a Torsen®-type Limited Slip Differential. Sport bucket seats cradle with large side bolsters, and aluminum pedals add a race-inspired feel.



### RACE-INSPIRED BRAKING

Both R-Spec and GT models come equipped with a Brembo® braking system for confidence-inspiring performance. Up front, monobloc 4-piston calipers grip 340 mm ventilated rotors. At the rear wheels, monobloc 2-piston calipers and 330 mm ventilated rotors provide extra stopping power. Found on some of the world's fastest performance cars, the available Brembo® braking system with red painted calipers proves to be the perfect match for the Genesis Coupe's powerful engine.



### 7-INCH TOUCH-SCREEN NAVIGATION SYSTEM

The available 7-inch touch-screen navigation system integrates a wide range of information into one easy-to-use interface. In addition to turn-by-turn navigation, use the touch-screen to adjust audio controls or to see caller and contact information displayed from your compatible cell phone via the standard Bluetooth® hands-free phone system. The system includes a rearview camera for added convenience when reversing.



# 5

5-YEAR/100,000 KM  
**COMPREHENSIVE LIMITED  
WARRANTY\***

5-YEAR/100,000 KM  
**POWERTRAIN WARRANTY**

5-YEAR/100,000 KM  
**EMISSION WARRANTY**

5-YEAR/UNLIMITED KM  
**ROADSIDE ASSISTANCE  
PROGRAM\*\***



You will see that a number of our vehicles have received multiple awards from the most reputable third party organizations, so you can take their word when it comes to the quality, design and safety of our vehicles. This quality is equally matched by the quality of our warranty. We stand confidently behind our products to give you the ultimate peace of mind with a 5-year/100,000 km Comprehensive Limited Warranty\*, one of the best-backed warranties in Canada. We also provide a 5-year/unlimited km Roadside Assistance Program\*\* featuring flat tire changing, lockout service and more. Just one toll-free call away, 24 hours a day.

THERE'S NO SUBSTITUTE FOR  
**PEACE OF MIND**

# COLOURS

## EXTERIOR



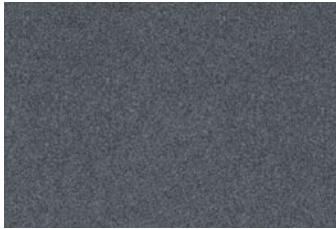
**CASABLANCA WHITE**



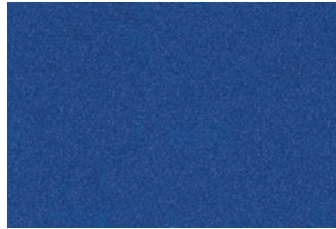
**CASPIAN BLACK**



**SANTIAGO SILVER**



**EMPIRE STATE GREY**

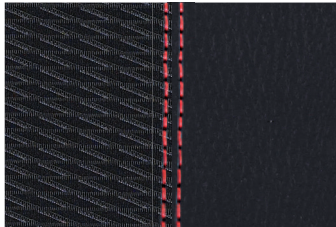


**IBIZA BLUE**



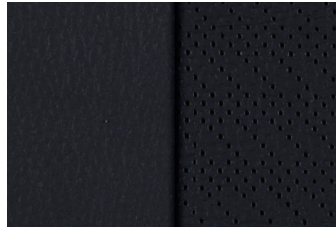
**TSUKUBA RED**

## INTERIOR



**BLACK CLOTH BOLSTERS WITH LEATHER INSERTS AND RED STITCHING**

Standard on 3.8 R-Spec model.



**BLACK LEATHER**

Standard on 3.8 Premium model.  
Available on 3.8 GT model (Santiago Silver, Empire State Grey and Ibiza Blue exterior colours only).



**TAN LEATHER**

Available on 3.8 GT model (Casablanca White, Caspian Black and Tsukuba Red exterior colours only).

## WHEELS



**3.8 Premium 18-inch wheels**



**3.8 R-Spec and 3.8 GT 19-inch wheels**

Choice of interior colour depends upon exterior colour and/or model selection. Due to the print production process, the colours shown throughout this brochure may vary slightly from the actual hue. Textures may not be exactly as shown. Visit [hyundaicanada.com](http://hyundaicanada.com) or see your dealer for details.

### PLASTIC HOOD PROTECTOR

Help prevent dents and scratches caused by road and vehicle debris with an attractive plastic hood protector.



### CARGO TRAY

Add years to the interior of your Hyundai by protecting it from spills and messy loads with a durable, custom-fit cargo tray.



### BLOCK HEATER

Engineered for your Hyundai, a block heater will help ensure fast starts and reduce engine wear in extreme weather.



### WHEEL LOCK NUTS

Help protect your valuable wheels and tires from theft with a set of Hyundai wheel lock nuts.



### PREMIUM FITTED CAR COVER

Specifically designed for the Genesis Coupe, this premium fitted 4-layer Technalon car cover includes a soft bottom layer, two internal layers, and a strong top layer making it moisture resistant and breathable, while providing a dust and pollution barrier. Suitable for indoor and outdoor use and it includes the Genesis logo on the hood area.



### CARGO NET

A custom-fit cargo net ensures everything you're transporting remains organized and in place by preventing items from sliding around.



### PERFORMANCE AXLE-BACK EXHAUST (STAGGERED TIPS)

Tune the performance and sound of your Hyundai with this stainless steel high flow bolt on exhaust system. Decreased back pressure and custom developmental tuning provides a deeper tone and increased performance. The system also features quad polished stainless steel staggered exhaust tips for that sleek look.



### PREMIUM ALL WEATHER FLOOR LINERS

Premium all weather floor liners were designed to cover the interior carpet providing maximum protection against the elements that other mats cannot offer. Their unique and durable design features a non-slip surface for added comfort and a long lasting premium look. Remove carpet mats prior to installation.

## ACCESSORIES

# GENESIS COUPE SPECIFICATIONS

3.8 R-SPEC	STANDARD EQUIPMENT INCLUDES:	
3.8L DOHC 24-valve V6 with Gasoline Direct Injection (GDI) and Dual Continuously Variable Valve Timing (D-CVVT)	Satin-finish dual exhaust outlets	
6-speed manual gearbox	Cruise control	
Automatic climate control	Fog lamps	
Airbags <sup>(6)</sup> – front impact (2), front seat-mounted side impact (2), front/rear side curtains (2)	Leather-wrapped steering wheel and gear shift knob	
3-stage Electronic Stability Control (ESC) with Traction Control System (TCS) <sup>2</sup>	Power door locks with remote keyless entry and alarm	
Anti-lock Braking System (ABS) with Electronic Brake-force Distribution (EBD) and Brake Assist (BA)	Power-adjustable heated outside mirrors	
AM/FM/SiriusXM™/CD/MP3 audio system with 6 speakers	Power windows with auto up/down and pinch protection	
6.0" colour touch-screen audio display	Projector beam halogen headlights	
iPod®/USB/auxiliary connectivity	LED tail lights	
Automatic headlights	Folding rear bench seat	
Bluetooth® hands-free phone system	Active front head restraints	
	Solar control tinted glass	
	Steering wheel-mounted audio and cruise controls	
	Manual tilt-and-telescopic steering column adjustment	
	Windshield wiper de-icer	
19" aluminum alloy wheels with staggered-width high-performance summer tires	Sport calibrated suspension	
Brembo® braking system	R-Spec sport bucket seats with leather inserts, larger cloth bolsters and red contrast stitching	
Front strut tower brace	Aluminum pedals and footrest	
Torsen®-type Limited Slip Differential (LSD)	Trunk lid spoiler with integrated LED CHMSL	

<sup>2</sup>Equipment in this blue box is not available on the 3.8 Premium model.

3.8 PREMIUM	INCLUDES 3.8 R-SPEC STANDARD EQUIPMENT <sup>2</sup> PLUS:	
18" aluminum alloy wheels with staggered-width high-performance all-season tires	LED integrated side mirror turn signal repeaters	
360-watt Infinity® AM/FM/SiriusXM™/CD/MP3 audio system with 10-speakers and external amplifier	Sport bucket seats with leather seating surfaces	
7.0" high-resolution touch-screen navigation system	8-way-adjustable driver's seat with adjustable lumbar support	
Heated front seats	Power tilt/slide sunroof with sunshade	
Rearview camera	Proximity keyless entry with push-button ignition	
High Intensity Discharge (HID) headlights with auto-leveling	Steering wheel-mounted paddle shifters (automatic models only)	
LED Daytime Running Lights	Optional: 8-speed electronic automatic with overdrive lock-up torque converter and SHIFTRONIC® manual mode	

3.8 GT	INCLUDES 3.8 R-SPEC AND 3.8 PREMIUM STANDARD EQUIPMENT <sup>2</sup> PLUS:	
Electrochromic auto-dimming rearview mirror with integrated HomeLink® transceiver and compass	Acoustically-laminated glass	
Metal grain appearance interior trim	Rear parking assistance sensors	
Deluxe illuminated door scuff plates (aluminum)	Optional: 8-speed electronic automatic with overdrive lock-up torque converter and SHIFTRONIC® manual mode	

<sup>2</sup>The 3.8 GT model is not equipped with trunk lid spoiler and R-Spec sport bucket seats.

## 2016 Genesis Coupe – Lambda 3.8L GDI V6

ENGINE DETAILS	
Type	3.8L DOHC 24-valve V6 with Gasoline Direct Injection (GDI) and Dual Continuously Variable Valve Timing (D-CVVT)
Displacement	3,778 cc
Materials	Aluminum block and head
Horsepower	348 @ 6,400 rpm (premium fuel)
Torque	295 lb-ft @ 5,100 rpm (premium fuel)
Bore and stroke	96.0 mm x 87.0 mm
Compression ratio	11.5:1
Motor mounts	Hydraulic and conventional rubber
Induction system	2-stage variable induction system (VIS)
Fuel system	Gasoline Direct Injection (GDI)
Recommended fuel	Premium / Unleaded
Emissions level	ULEV II

BRAKING	
Front brakes (Premium)	320 mm ventilated rotors, 1-piston calipers
Front brakes (R-Spec and GT)	340 mm ventilated rotors, 4-piston Brembo® fixed calipers
Rear brakes (Premium)	314 mm solid rotors, 1-piston calipers
Rear brakes (R-Spec and GT)	330 mm ventilated rotors, 2-piston Brembo® fixed calipers

STEERING	
Type	Rack-and-pinion
Assistance	Hydraulic power steering

SUSPENSION	
Front	Dual-link MacPherson strut with sport-tuned springs and monotube gas-charged dampers
Rear	5-link with sport-tuned springs and monotube gas-charged dampers
Front stabilizer bar	24 mm (Premium) / 25 mm (R-Spec, GT)
Rear stabilizer bar	19 mm (Premium) / 20 mm (R-Spec, GT)
R-Spec and GT suspension package	Front strut tower brace Front spring rate: 2.8 kgf/mm (+0.2) Rear spring rate: 6.0 kgf/mm (+0.6)

WHEELS / TIRES		
	Front:	Rear:
Wheels (Premium)	18" x 7.5J aluminum alloy	18" x 8.0J aluminum alloy
Wheels (R-Spec, GT)	19" x 8.0J aluminum alloy	19" x 8.5J aluminum alloy
Tires (Premium)	P225/45R18 Bridgestone Potenza RE92A (High-performance all-season)	P245/45R18
Tires (R-Spec, GT)	P225/40R19 Bridgestone Potenza RE050A (High-performance summer)	P245/40R19

VOLUME	
Passenger compartment	2,515 L
Cargo (Trunk)	284 L
Total	2,799 L

WEIGHT	
Curb weight	1,628 kg – 1,646 kg
Weight distribution (Front / Rear)	56% / 44%

FUEL ECONOMY <sup>1</sup> (L/100KM) – 5 CYCLE TESTING METHOD		
	6-speed manual	8-speed automatic
City	14.1 L/100 km	14.4 L/100 km
Highway	9.6 L/100 km	9.5 L/100 km
Combined	12.1 L/100 km	12.2 L/100 km

For more detailed specifications and information, please visit [hyundaicanada.com](http://hyundaicanada.com), or visit your dealer today.

• = Standard   - = Not Available   ◦ = Optional

		3.8 R-SPEC	3.8 PREMIUM	3.8 GT
<b>PERFORMANCE</b>				
Engine	3.8L DOHC 24-valve V6 with Gasoline Direct Injection (GDI) and Dual Continuously Variable Valve Timing (D-CVVT)	•	•	•
Transmission	6-speed manual gearbox	•	•	•
	8-speed electronic automatic with overdrive lock-up torque converter and SHIFTRONIC®	-	◦	◦
Drive configuration	Rear-Wheel Drive (RWD)	•	•	•
<b>EXTERIOR</b>				
Wheels and tires	18" aluminum alloy wheels with staggered-width high-performance all-season tires (P225/45R18 front, P245/45R18 rear)	-	•	-
	Temporary spare (steel wheel)	-	•	-
	19" aluminum alloy wheels with staggered-width high-performance summer tires (P225/40R19 front, P245/40R19 rear)	•	-	•
	Temporary spare (aluminum wheel)	•	-	•
Exterior lighting	Automatic headlights	•	•	•
	Fog lamps	•	•	•
	LED tail lights	•	•	•
	Projector beam halogen headlights	•	-	-
	High Intensity Discharge (HID) headlights with auto-leveling	-	•	•
	LED Daytime Running Lights	-	•	•
	LED integrated side mirror turn signal repeaters	-	•	•
Outside mirrors	Power-adjustable, heated	•	•	•
Exterior trim	Satin-finish dual exhaust outlets (integrated into rear bumper)	•	•	•
	Trunk lid spoiler with integrated LED CHMSL	•	-	-
Glass	Solar control tinted glass	•	•	•
	Acoustic glass film	-	-	•
Wipers	Speed-sensitive front windshield wipers with 2 speeds and variable intermittent settings	•	•	•
	Windshield wiper de-icer	•	•	•
<b>INTERIOR</b>				
Seating	Height-adjustable head restraints	•	•	•
	Folding rear bench seat with integrated centre cupholders	•	•	•
	6-way manually-adjustable driver's seat including height adjustment	•	-	-
	R-Spec sport bucket seats with leather inserts, larger cloth bolsters and red contrast stitching	•	-	-
	8-way-adjustable driver's seat with adjustable lumbar support	-	•	•
	Sport bucket seats with leather seating surfaces	-	•	•
Multimedia	Heated front seats	-	•	•
	iPod®/USB/auxiliary connectivity (mounted in centre console)	•	•	•
	Bluetooth® hands-free phone system	•	•	•
	6.0" colour touch-screen audio display	•	-	-
	AM/FM/SiriusXM™/CD/MP3 audio system with 6 speakers	•	-	-
	360-watt Infinity® AM/FM/SiriusXM™/CD/MP3 audio system with 10-speakers and external amplifier	-	•	•
Interior trim	7.0" high-resolution touch-screen navigation system	-	•	•
	Rearview camera	-	•	•
	Front sunvisors with driver's extension and illuminated vanity mirrors	•	•	•
	Front centre armrest with storage compartment	•	•	•
	Integrated padded door armrests	•	•	•
	Door map pockets	•	•	•
	Metal paint accented door handles	•	•	•
	Leather-wrapped steering wheel, gear shift knob, and parking brake lever	•	•	•

		3.8 R-SPEC	3.8 PREMIUM	3.8 GT	
<b>INTERIOR (continued)</b>					
HVAC	Artificial leather door trim inserts	•	•	•	
	Aluminum pedals and foot rest	•	-	•	
	Deluxe illuminated door scuff plates (aluminum)	-	-	•	
	Metal grain centre stack plastic	-	-	•	
Steering wheel	Cabin air filter	•	•	•	
	Automatic climate control	•	•	•	
	Rear window defroster	•	•	•	
Convenience	Manual tilt-and-telescopic steering column adjustment	•	•	•	
	Audio (Volume, Mode, Seek) and Bluetooth® hands-free telephone controls	•	•	•	
	Leather-wrapped steering wheel	•	•	•	
	Steering wheel-mounted shift paddles (automatic models only)	-	◦	◦	
SAFETY	Power windows with auto up/down and pinch protection	•	•	•	
	Power door locks	•	•	•	
	Cruise control	•	•	•	
	Remote keyless entry system with security alarm	•	-	-	
	Proximity keyless entry with push-button ignition	-	•	•	
	Power tilt/slide sunroof with sunshade	-	•	•	
	Electrochromic auto-dimming rearview mirror with integrated HomeLink® transceiver and compass	-	-	•	
	Rear parking assistance sensors	-	-	•	
	Restraint systems	Airbags <sup>1</sup> (6) – front impact (2), front seat-mounted side impact (2), front/rear side curtains (2)	•	•	•
		Three-point seatbelts	•	•	•
Front and rear seatbelt pre-tensioners and force limiters		•	•	•	
LATCH lower anchors and upper tether anchors (rear seats)		•	•	•	
Active (anti-whiplash) front head restraints		•	•	•	
3-stage Electronic Stability Control (ESC) with Traction Control System (TCS) <sup>2</sup>		•	•	•	
Anti-lock Braking System (ABS) with Electronic Brake-force Distribution (EBD) and Brake Assist (BA)		•	•	•	
Front and rear crumple zones		•	•	•	
Energy-absorbing steering column		•	•	•	
8 km/h bumpers		•	•	•	
Passive safety systems	Body-side reinforcements	•	•	•	
	Shift interlock system (automatic models only)	-	◦	◦	
	<b>EXTERIOR / INTERIOR DIMENSIONS (MM)</b>				
Wheelbase	2,820	Head room (Front / Rear)	996 / 880		
Overall length	4,630	Leg room (Front / Rear)	1,120 / 770		
Overall width	1,865	Hip room (Front / Rear)	1,423 / 1,249		
Overall height	1,385	Shoulder room (Front / Rear)	1,440 / 1,340		
Front overhang	835				
Rear overhang	975				
Front track	18" wheel/tire package: 1,605 19" wheel/tire package: 1,601				
Rear track	18" wheel/tire package: 1,625 19" wheel/tire package: 1,621				
Minimum ground clearance	129				

[hyundaicanada.com/genesis-coupe](http://hyundaicanada.com/genesis-coupe)

---



<sup>TM/®</sup>The Hyundai names, logos, product names, feature names, images and slogans are trademarks owned by Hyundai Auto Canada Corp. Specifications, features, illustrations, accessories, materials and equipment and all other information shown in this brochure are based on the latest information available at the time of publication. Although descriptions are believed to be correct, accuracy cannot be guaranteed. Hyundai Auto Canada Corp. reserves the right to make any changes or modifications at any time, without notice or obligation, including, without limitation, in colour, specifications, features, accessories, materials, equipment and models. Some vehicles are shown with optional equipment. All Hyundai warranties have no deductible. \*With premium fuel. <sup>A</sup>Fuel economy figures are based on manufacturer testing and are used for comparison purposes only. Actual fuel efficiency may vary based on driving conditions and the addition of certain vehicle accessories. <sup>†</sup>Hyundai's Comprehensive Limited Warranty coverage covers most vehicle components against defects in workmanship under normal use and maintenance conditions. <sup>\*\*</sup>Hyundai's 24-Hour Roadside Assistance Program is a limited service and does not cover certain costs or expenses. Roadside Assistance is not a warranty. <sup>1</sup>The Supplemental Restraint (Airbag) System (SRS) is designed to work with the 3-point seatbelt system. The SRS deploys in certain frontal and/or side impact conditions where significant injury is likely. The SRS is not a substitute for seatbelts, which must still be worn at all times. Children under the age of 13 should be securely restrained in the rear seat. NEVER place a child seat in the front seat of a Hyundai vehicle. <sup>2</sup>Electronic Stability Control (ESC) and Traction Control System (TCS) are meant to enhance conscientious driving habits and are not a substitute for safe driving practices. ESC cannot control your vehicle's stability under all driving situations. No system, no matter how advanced, can overcome physics or correct poor driving. Speed, road conditions and driver steering input will affect whether ESC can help prevent loss of control. See Owner's Manual for details. <sup>‡</sup>90-day complimentary subscription. iPod<sup>®</sup> is a registered trademark of Apple Inc. HomeLink<sup>®</sup> is a registered trademark of Johnson Controls Inc. The SiriusXM<sup>™</sup> name is a trademark of SiriusXM Satellite Radio Inc. Bluetooth<sup>®</sup> word mark and logos are registered trademarks owned by Bluetooth SIG, Inc. Infinity<sup>®</sup> is a registered trademark of Harman International, Inc. Brembo<sup>®</sup> is a registered trademark of Brembo SpA. Brembo's product names are either trademarks or registered trademarks of Brembo. TORSEN<sup>®</sup> is a registered trademark of JTEKT Torsen North America, Inc. All other trademarks and trade names are those of their respective owners.

