



EQUUS



EQUUS



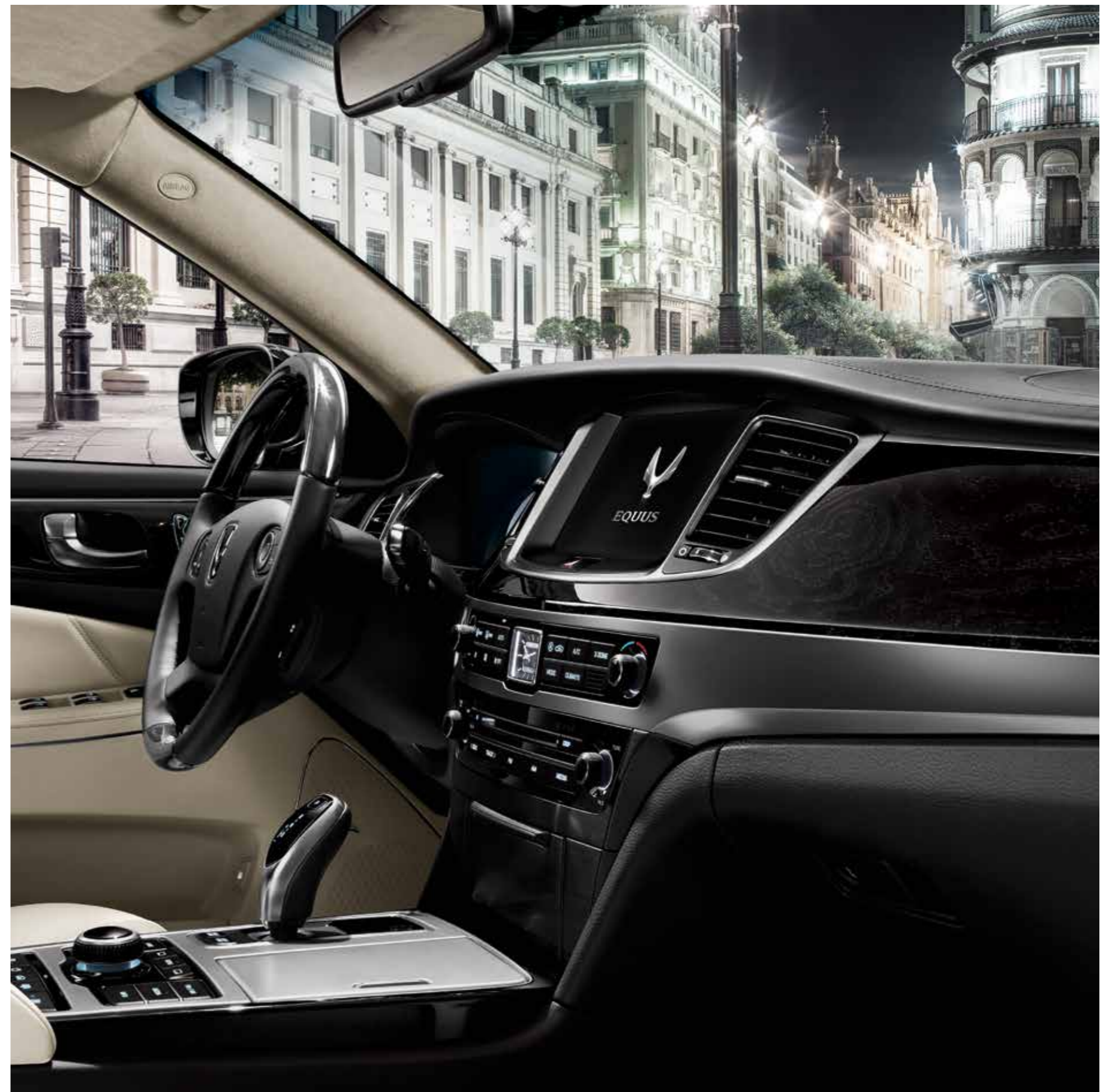
Your life's escort



FOR EVERY MOMENT

Life invites you to experience it. For all it has to offer, all its depth and dimensions, you need a car that's right there with you.

Equus. Escorting you on the journey.





BESIDE YOU ALL THE WAY

There are places to be, and there are places to be seen.
No matter where you're headed, Equus takes you there.

AT THE READY

Light and darkness, depth and meaning.
Here is a car that makes perfect sense.
One that's always ready for what you ask of it.





A MASTERPIECE

Masterful design, masterful control.
Every curve and line of Equus is a distillation
of refinement and luxury.



YOU, FROM EVERY ANGLE



At any given moment, at any given place,
your car should express who you are - a VIP.





BEAUTY ENDURES



Time moves ever onward. So why shouldn't each moment
be as good as can be? With Equus, it can.



SPACE AND MODERNITY

No clutter. Just space and the sense of harmony it brings.
Welcoming you every time you step inside.



SOUNDS INCREDIBLE

You're on your way, accompanied by a soundtrack that is just perfect. Providing sonic quality of the highest calibre is the lexicon premium sound system with Discrete Logic7.



lexicon

17 speakers
With 17 speakers, the lexicon premium sound system delivers unparalleled audio performance to every part of the car.



TAKE A SEAT



This is where you belong. With the unmatched luxury of these seats, you and your passengers will always feel at home.

DYNAMICS ON FOUR WHEELS

Elite performance is what got you where you are.
And now it's set to take you even further.





FOR A BALANCING ACT,
A CURTAIN CALL



No words can do justice for the impeccable balance
of power and style of Equus.





DISCERNMENT

Your destination draws near. With engine, wind and road noise cut to a minimum, there's hardly a sound to disturb the moment.



DIFFERENT VENUES,
SAME PRESTIGE



With a presence that's discreet yet head-turning,
Equus never goes unnoticed.
You wouldn't want it any other way.



A NEW PARADIGM
OF STYLE AND
FUNCTIONALITY



EQUUS





YOU'VE ARRIVED

For those who know that value lies in substance,
not superficiality. For those who ponder and reflect.
For those who don't just look, but see.
The Equus.

EVEN GREATER HEIGHTS OF POWER

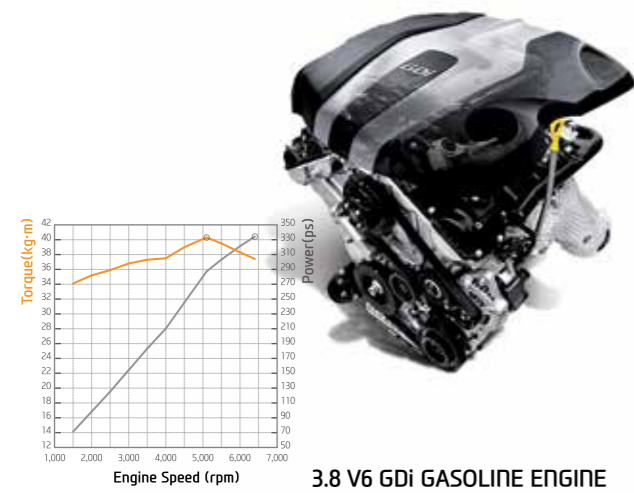


3.8 V6 GDi GASOLINE ENGINE

Hyundai would never contemplate resting on its laurels. Now a 3.8 V6 GDi gasoline engine, while retaining all the durability, fuel efficiency, low weight, low noise and vibration levels of its predecessor MPI engine, will deliver improved engine performance of 334 ps at 6,400 rpm and 40.3 kg.m at 5,100 rpm to maximize driving pleasure.

ENHANCED ENGINE TECHNOLOGY

Winning the accolade of Ward's 10 Best Engines for three consecutive years, the V8 (Tau) engine of Equus has been upgraded to a 5.0 GDi powerhouse with, of course, correspondingly Outstanding levels of maximum output of 423 ps at 6,400 rpm and maximum torque of 50.5 kg.m at 5,000 rpm. Forged using a sophisticated high pressure die-casting system and with an all-aluminium construction, it incorporates variable valve timing and a tuned induction system to deliver superb efficiency. At the same time, it provides impressive fuel economy and a drive that's quiet and smooth. A true embodiment of controlled power.



3.8 V6 GDi GASOLINE ENGINE



5.0 V8 GDi GASOLINE ENGINE

In the same class, only two cars have engines more powerful than the 5.0 V8 GDi gasoline engine found in Equus. Proof that Hyundai stands shoulder to shoulder with two of the world's most prestigious marques.

A. Optimum aerodynamics with reduced noise

Pushing aerodynamic efficiency to the maximum, Equus has paid particular attention to minimizing noise. Road noise is lowered thanks to improved wheel rigidity, and wind noise is reduced through redesigned outside mirrors, while noise from both the engine and transmission is also reduced.

B. 8-speed automatic transmission

The lightweight, superbly engineered 8-speed automatic transmission, utilising SHIFTRONIC® technology, provides delightfully smooth, almost imperceptible gear shifts.

C. Electronic control suspension (ECS)

Electronic control suspension (ECS) controls damping force based on road conditions and driving made to help improve ride and stability. In normal, eco, snow modes ECS provides superior ride comfort. In sport mode, ECS provides superior stability.



UNEQUALLED DRIVING "PERFORMANCE"

The handling, ride and road holding of Equus are without peer—the result of perfect equilibrium between design and engineering. Meanwhile, a renewed focus on cutting out extraneous noise means driving is the relaxing, refined experience it's meant to be. Innovative chassis construction technology allied with the use of high strength steel increase rigidity while further reducing noise and vibration. All of which combines with rear wheel drive, which enhances the even, precise handling by providing ideal front & rear weight distribution.

WITH SAFETY COMES REASSURANCE



Knee airbag
The driver has additional protection in the event of an impact, thanks to Knee airbag which helps prevent injuries to the knee and lower leg.

A. Seatbelt pre-tensioners

At the moment of collision, seatbelt pre-tensioners tighten to hold occupants firmly in their seats, preventing them from being thrown forward forcefully and lessening injury.



B. Active accelerator pedal

This works in conjunction with the car's safety and ECO driving systems. Should a potentially dangerous situation arise, further downward foot pressure is prevented, and the pedal vibrates under your foot as a warning.

AIRBAG SYSTEM TECHNOLOGY

A total of 9-airbag system means reassurance is as much a part of Equus' specification as performance and refinement. This is just one element of a comprehensive range of active and passive safety measures deployed throughout the car, meaning that you're protected as you are being escorted. Front side and full-length curtain airbags are supplemented by knee airbag, and there are side airbags for the rear seat passengers. These work in conjunction with seatbelt pre-tensioners and electronic active headrests should an impact occur.



All around view display system
With a conveniently placed switch, operating the All around view display system is simple and intuitive.



ALL-AROUND VIEW DISPLAY SYSTEM

With All-around view display system, four cameras at the front, sides and rear of Equus relay images to the display monitor in the center of the dashboard. This provides you with a 360-degree, bird's eye view of the car's location, letting you know exactly how you're positioned. Working in conjunction with the Parking assist system, which uses a steering wheel angle sensor and a Rear-view display system to show the predicted trajectory of the vehicle, All-around view display system makes parking safe, simple and stress-free.

C. Blind spot detection (BSD)

Radars on both sides of the rear bumper detect vehicles that enter the Equus' blind spot. When this happens, a warning indicator on the outside mirror flashes, to alert you to the danger.



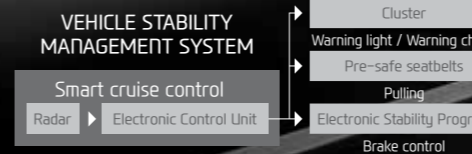
D. LED headlamps with Adaptive front lighting

LED headlamps with Adaptive front lighting turn automatically with the steering wheel to light up more of the road ahead when you negotiate a bend. For maximum effectiveness, your speed and yaw rate are also taken into account.



E. Smart cruise control (SCC)

Smart cruise control (SCC) not only maintains a set vehicle speed, it also maintains a set distance from the car in front. What's more, if the vehicle in front of you stops, you stop as well.



NOT JUST SAFE, BUT INTELLIGENT

Constructed of high tensile steel, Equus' chassis is not just strong, it's also built in such a way that shocks are dissipated should a collision occur. Tested to the highest of standards, impacts from all sides are taken into account. At the same time, a variety of driving systems are integrated to help prevent accidents. Vehicle stability management (VSM) combined with, amongst others, Electronic stability program (ESP) and Smart cruise control (SCC), help you maintain control under any driving condition you may encounter.

SEE, FEEL, TOUCH

In an ideal world the interior of a car would have sensuous, natural, tailored materials to satisfy the senses, and technologically advanced, intuitive controls to satisfy the demands of functionality and logic. Welcome to that world. In fact, the Equus demonstrates that the two can exist in harmony in the same device. Hence, precise air and temperature controls are immaculately finished in chrome. Seats upholstered in real leather adjust with perfect ergonomics. An automatic transmission operates using cutting-edge technology and is bordered by handsome, tactile, traditional wood. As a nod to customers' discerning taste, the choice of interior finishes has been expanded to include black + crème beige. Your escort has never been so in tune with your needs and desires.



ANTICIPATING AND DELIVERING

City driving asks a lot of your car, and it asks a lot of you too. Equus is alert to every eventuality, keeping you updated with essential driving data. You can check everything from suspension information to interior air temperature by means of a graphically sharp read-out in the center of supervision cluster with 12.3" full color TFT. In the meantime, the 9.2" center console display and Head-up display lend you a helping hand.

A. Drive mode

With three different drive modes - Normal, Sport and Snow - you can select the ride quality to suit your preferred level of cushioning and body motion, or simply in response to the road surface conditions.

B. Head up display

What could be more convenient than projecting speed and turn information on the windscreen? Head up display does precisely that, allowing you to keep your eyes on the road to ensure safe driving.

C. Supervision cluster with 12.3" full color TFT

Just over a foot from edge to edge, the supervision cluster with 12.3" full color TFT delivers enhanced driving information with superb style. Personalization is also possible, as you can set the graphic interface to match your preferences.



D. Connectivity (USB, AUX)

USB & AUX ports on the front center fascia lets you plug in your MP3 player and smartphone or other portable media player and stream your favorite music through Equus' superlative audio system.

E. Parking assist system

The parking assist system uses a 9.2" center console display to show the view from the rear camera. Simple graphic lines form perfect guidelines to park within.

F. Haptic control

Built into the steering wheel, you can control a range of in-car functions just as you would a smartphone with a touchscreen. It provides a modern, dynamic user interface and minimizing driver distraction.

G. 16-way seat adjustment system

The adjustable in 16 different ways driver's seat offers the last word in control. height, rake, lean, and forward and backward position can all be set inch-perfect. What's more, the controls are placed where they're most accessible, for fingertip operation.



ELEGANCE FROM FRONT TO BACK

It's not just the driver space where style, comfort and convenience have been thoroughly thought out. The rear compartment also attains the highest levels of executive luxury. Superfine suede trim extends from the headlining to the door pillars and the rear parcel shelf. With beautifully supportive seats as well as headrests that fold out at the sides for added comfort, rear passengers can settle down and watch movies and videos on two separate 9.2" display positioned on the back of the front seats. Meanwhile, for fresh air and sunlight, the sunroof slides back at the slightest touch.



EVERYTHING, AND MORE



SHIFT-BY-WIRE TRANSMISSION SYSTEM

Effortless gear shifting is an article of faith in luxury vehicles. The shift-by-wire transmission system of Equus operates using purely electrical signals, with all mechanical links between gear selector and gearbox removed. Gear changes are thus smoother, more progressive and more convenient.



INTERIOR INTEGRITY

Beautifully designed instrumentation. Audio system, air conditioning and heating controls exactly where they should be. A supervision cluster that lays out driving information intuitively and is cohesively integrated into the elegant dashboard, optimally positioned to match your line of sight. Above all, a feeling of complete confidence, one that allows Equus to become an extension of yourself. A leather-clad steering wheel only serves to underline the sensation, as does the sheer quality of the finished surfaces and trim. As you and your passengers climb aboard, you know that from here to your destination you'll be looked after, every step of the way. It's the solid sense of security offered by first class engineering and exceptional design.



Driver information system (DIS)

The Driver information system (DIS), easily operated by dial, push and enter control, provides quick access to the multimedia system, placing even more information at your fingertips.

*The navigation system and the shark antenna apply only to certain countries.



A. Remote control panel for rear seats

You're a VIP and so are your passengers, and a remote control panel for rear seats into the rear armrest console is their portal to a world of comfort and convenience, allowing them to adjust climate, seating and audio settings to their exact tastes.

B. Electric rear door curtains

Too much sun? Not enough privacy? Whatever you require, a touch of a button raises or lowers the rear side curtains.

C. More rear seat comfort and convenience

The rear seats have been redesigned to maximize ergonomics and comfort. Power lumbar supports combine with more supportive seatbacks and sides, wider seat cushions and thicker headrests.

D. Rear seat entertainment system

With dual 9.2" display, one set into the back of each front seat, rear seat passengers can enjoy the ultimate entertainment experience in the intimate surroundings of Equus.



Rear seat leg supports

Already a luxurious feature, electrically adjustable leg supports of the rear seats can now be raised up to an angle of 80 degrees. That's 9 degrees of more comfort.



DISCOVER THE FINER POINTS

Equus escorts you in utmost luxury.
Outstanding design, materials and convenience come together as one.



A. Hood emblem

Luxury cars carry their hood emblem with pride. The distinctive silver winged motif defines the Hyundai marque.

B. Horizontal-type radiator grille

A more contemporary look is conveyed by the horizontal-type grille. Deep and wide, it makes a statement of confidence and refinement.

C. LED headlamps with Adaptive front lighting system (AFLS)

LED headlamps with Adaptive front lighting system (AFLS) deliver optimum visibility at night by adjusting the beam angle and providing intense and even illumination of the road ahead. Their bright white light mimics natural daylight.

D. Vertical-type radiator grille

A vertical-type grille presents a bold, distinctive face to the world, its chrome metallic bars embodying classic elegance.

E. LED rear combination lamps

Wrapping around the bodywork in a flowing form that resembles an eagle's wings, energy-saving LED lights increase visibility during both day and night.

F. LED front fog lamps

Front LED fog lamps are bright and penetrative, augmenting visibility and safety in murky conditions.



G. LED rear fog lamps

LED rear fog lamps emit concentrated red light, making you more visible to traffic behind and improving safety in foggy weather.

H. LED outside mirror repeaters

Elegantly integrated into the outside mirror housings, LED repeater lamps improve visibility when turning, to increase safety.

I. Power door system

The power door system ensures that if a door does not close completely, it's closed automatically and securely locked.

J. Puddle lamps

Puddle lamps welcome you to Equus. Mounted under the outside mirrors, they light the way for you and your passengers.

K. Smart trunk system

Standing near the perimeter of the trunk with the smart key for 3 seconds will open the trunk lid automatically, giving convenient access to the trunk even when both hands are full.

L. Power sunroof with enhanced safety features

The wide sunroof senses any obstruction as it slides open and shut, immediately stopping to prevent, for example, hands being caught.

M. 19" sputtering wheels

Stunning 19" sputtering wheels, multi-spoked and with Equus branding at their center, make an unforgettable statement all by themselves.

N. 18" alloy wheels

18" alloy wheels, shod with 245/50 R18 tires, provide elegance.



*The images in this brochure show full option cars. Depending on the region, there may be some differences.

QUALITY IN EVERY DETAIL

The journey of exploration continues as you discover the many quality features of Equus's interior.



A. Electric tilt & telescopic power steering wheel
The tilt and telescopic steering column adjusts up & down & forward & back, so that you can find the position that suits you best.



B. Smart key
Allowing convenient keyless entry to the car, the sophisticated card-type smart key can be easily carried in your wallet.



C. Floor console
A floor console provides comfort on long journeys and opens up to reveal a convenient compartment, the ideal location for small items like sunglasses and other essentials.

*Design allows for convenient use of the power outlet by allowing for easy connection of the cable. (cable and USB car charger are not provided with your purchase)

*iPod touch is a trademark of Apple Inc., registered in U.S. and other countries.

D. Luxury suede package and LED room lamps
The luxury suede interior package is a joy for the senses, easy on the eye and delightful to touch. Meanwhile, LED lamps at the front and rear contribute to the sophisticated ambience.

E. Front & rear luxury door scuff lamps
In addition to protecting the interior, Equus-engraved door scuffs are also illuminated, for an additional VIP touch, welcoming you every time you enter the car.

F. Auto defogging system
The auto defogging system uses a sensor to deploy automatically when the windshield mists up, to clear the glass.



G. Heated steering wheel
Take hold of the elegance of real wood when you take the steering wheel. The leather sections are also heated, for comfort and warmth on cold days.



H. Electric parking brake (EPB)
Parking Equus securely requires just one touch of the electric parking brake. An indicator light illuminates to show that the brake is on.



I. Clock
The interior clock of Equus carries all the hallmarks of premium aviation design.



J. Air ventilations
Adjustable air ventilations located in the B-pillars provide optimum ventilation for rear seat passengers.



K. Storage system (cooling/warming)
A cooling/warming box integrated into the rear armrest console is the ideal place to store drinks and snacks.



L. Seat folding system
The front passenger seat folds and has a long range of forward travel, useful when rear seat passengers want to stretch out, but still wish for a good view through the windscreen.



M. Front seat active headrests
Front seat active headrests automatically move up and back in the event of an accident, to help prevent whiplash.



N. Rear wing-out headrests
The rear headrests feature side wings that fold out to provide enhanced passenger comfort.



INTERIOR TRIMS



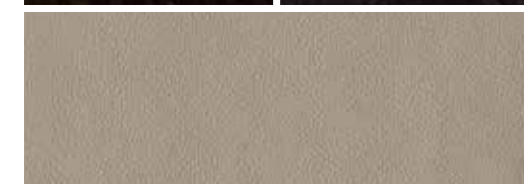
Cream beige two-tone



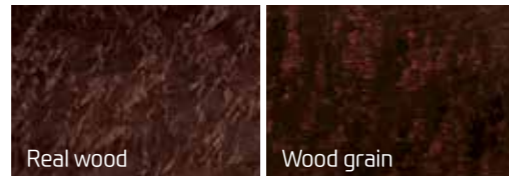
Brown two-tone



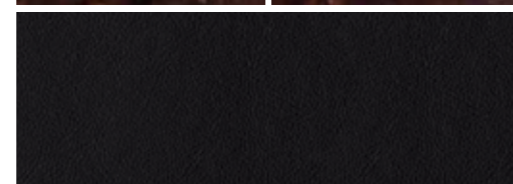
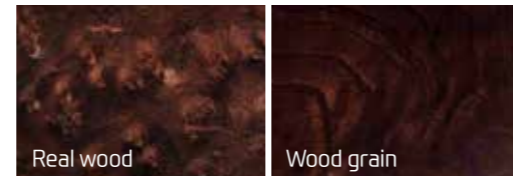
Black one-tone



Cream beige leather seats

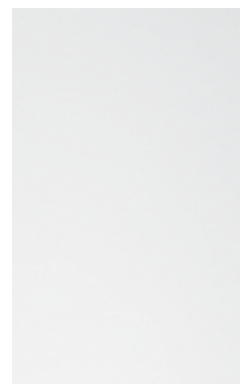


Brown leather seats



Black leather seats

EXTERIOR COLORS



Marble white YW6



Platinum silver Y6S



Polished metal V6S



Royal blue TB



Onix black YB6



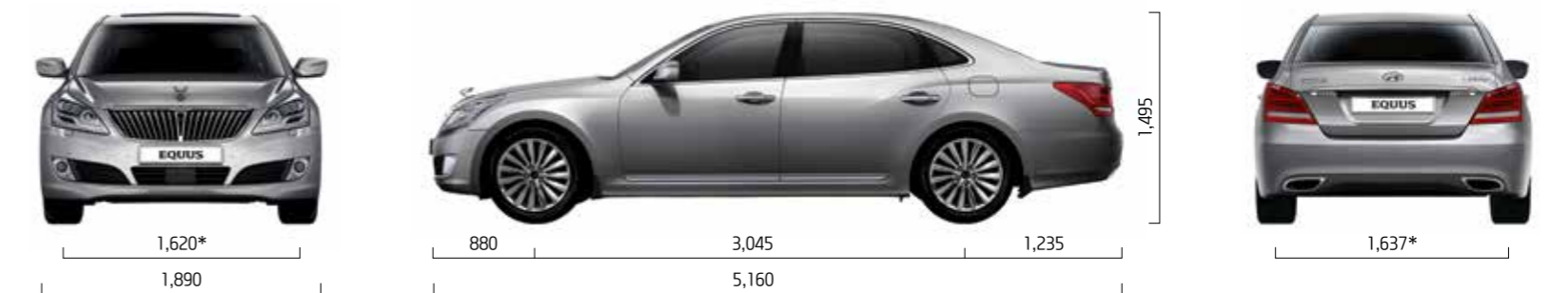
Cona black VB2

SPECIFICATIONS

Type	3.8 V6 GDi gasoline engine		5.0 V8 GDi gasoline engine	
Overall length (mm)	5,160			
Overall width (mm)	1,890 (with grip handle)			
Overall height (mm)	1,495 (1,490 : with air suspension)			
Wheel base (mm)	3,045			
Wheel tread (mm)	Front	18" wheels : 1,616 (1,616 : with air suspension), 19" wheels : 1,620 (1,620 : with air suspension)		
	Rear	18" wheels : 1,633 (1,634 : with air suspension), 19" wheels : 1,637 (1,638 : with air suspension)		
Head room (mm)	Front	1,025 (982 : with sunroof)		
	Rear	965		
Leg room (mm)	Front	1,145		
	Rear	985		
Shoulder room (mm)	Front	1,500		
	Rear	1,473		
Displacement (cc)	3,778		5,038	
Max. Power (ps / rpm)	334 / 6,400		423 / 6,400	
Max. Torque (kg-m / rpm)	40.3 / 5,100		50.5 / 5,000	
Brakes	Front	18" wheels : 18" ventilated disc, 4 pot-caliper brake with pad wear warning device (Mechanical device : Non-electronic sensor)		19" wheels : 19" ventilated disc, 4 pot-caliper brake with pad wear warning device (Mechanical device : Non-electronic sensor)
	Rear	17" wheels : 17" ventilated disc, 1 pot-caliper brake with pad wear warning device (Mechanical device : Non-electronic sensor)		
Suspension	Front	Multi-link		
	Rear	Multi-link		
Tire	245 / 50 R18		245 / 45 R19	
Fuel tank (liter)	77			

- The above values are results from internal testing and are subjected to change after validation.
- Some of the equipment illustrated or described in this catalogue may not be supplied as standard equipment and may be available at extra cost.
- Hyundai Motor Co. reserves the right to change specifications and equipment without prior notice.
- The color plates shown may vary slightly from the actual colors due to the limitations of the printing process.
- Please consult your local dealer for full information and availability on colors and trims.

DIMENSIONS



* Wheel tread • 18" alloy wheels (Front/rear) : 1,616 (1,616 : with air suspension) / 1,633 (1,634 : with air suspension) • 19" alloy wheels (Front/rear) : 1,620 (1,620 : with air suspension) / 1,637 (1,638 : with air suspension)



NEW THINKING. NEW POSSIBILITIES.

People's expectation toward individual mobility requires more than just a convenient means of transportation. The old understanding of cars has become outdated. A car represents individuals' lifestyles, and it became an integral part of their lives. At the same time, the automobile industry has experienced seismic change. Hyundai Motor Company has grown rapidly to become one of the largest automakers, backed by world class production capability and superior quality. We have now reached a point where we need a qualitative approach to bring bigger ideas and relevant solutions to our customers.

This is an opportunity to move forward and we have developed a new brand slogan that encapsulates our willingness to take a big leap. Led by our new slogan and the new thinking underlying it, we will become a company that keeps challenging itself to unlock new possibilities for people and the planet.

Hyundai Motor Company
www.hyundai.com

GEN. LHD 1502 ENG. ID-KM

Copyright © 2015 Hyundai Motor Company. All Rights Reserved.

www.facebook.com/hyundaiworldwide
www.youtube.com/hyundaiworldwide
plus.google.com/+hyundai





NEW THINKING.
NEW POSSIBILITIES.