



HYUNDAI

NEW THINKING.
NEW POSSIBILITIES.

EON





ISN'T IT NICE TO BE NOTICED?

With Eon's eye-catching good looks, attention quickly turns to admiration. Or even a case of love at first sight. But there's more to Eon than meets the eye. Because the Eon story is also about smart, efficient and ecological design starting with its remarkable power plant. Capable of squeezing 21.1km out of every liter of fuel, the advanced Epsilon engine promises to keep your driving costs low. Eon's smart design extends to the generous interior space. Its sporty interior design contributes to a spacious, comfortable feeling. But perhaps best of all, Eon makes driving fun again.

all eyes on you



AN ELEGANTLY SIMPLE SOLUTION.

Rather than follow the beaten path, we at Hyundai have always preferred to take the road less travelled. We strive for innovative solutions and we pride ourselves on our ability to bring new thinking into the engineering and design of automobiles. The all-new Eon provides the best proof of Hyundai's fresh and innovative approach. Serving as the perfect extension of you, Eon hits the bulls-eye in roominess and complete satisfaction in all other important categories: drivability, style, economy and safety. Eon gives you practically everything you ever wanted and needed in an urban car.

quick and nimble



epsilon 0.8

26.3km/L highway

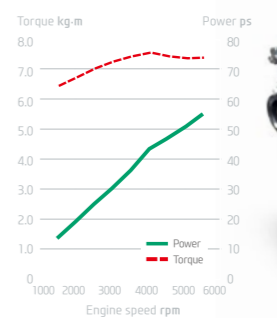
SOMETHING TO SMILE ABOUT

Fuel efficiency that leaves you smiling.
The 814cc eco-friendly epsilon engine leaves all other competitors trailing far behind.

Good things come in small packages. This couldn't be truer with Epsilon, Hyundai's advanced new engine developed for Eon. The new generation of Hyundai engines are renown for their durability and outstanding power-to-weight ratio. Epsilon's fuel economy rating of 20.8km/L is sure to leave you smiling, yet it still manages to deliver 56 hp and 7.6kg/m of torque at 4000rpm for spirited acceleration performance. Mated to a silk-smooth 5-speed manual transmission, Epsilon gets the job done quietly and smoothly.

Epsilon 0.8 MPI Engine

The 800cc eco-friendly Epsilon engine leaves the competition trailing far behind. To squeeze the maximum amount of energy in each fuel droplet, fuel is fed through a multi-point injectors (MPI) while air is delivered through an optimized port intake system. To further improve fuel economy, roller rocker arms are applied to the overhead valve while critical internal components are treated with exotic low-friction coatings. Epsilon's timing belt features an auto-tensioning system for higher durability and reduced NVH (noise, vibration and harshness).



Front Suspension

Up front, Eon rides on a McPherson strut suspension with anti-roll bar and coil springs fitted around gas-charged dampers. For precise steering and handling, Eon is fitted with a optional motor-driven power steering system.



Rear Suspension

For a smooth and stable ride, Eon adopts a tried and true torsion beam axle suspension in the rear, supplemented by coil springs and gas-charged shock absorbers.





cd: 0.35 / shot overhang

Equinox

Eon fits the scene just perfectly. Around town, on the beach: Anywhere, or anytime Eon proves to be an amazingly versatile, practical and fun-to-drive car. It's also reassuring to know that Eon is an absolute cinch to park.

But don't be fooled by its compact exterior dimensions because Eon rewards you with a surprisingly roomy and comfortable cabin. Plus, as a bonus, you also get class-leading cargo space, something that always comes in handy, particularly on those weekend trips with your friends.



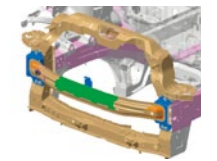
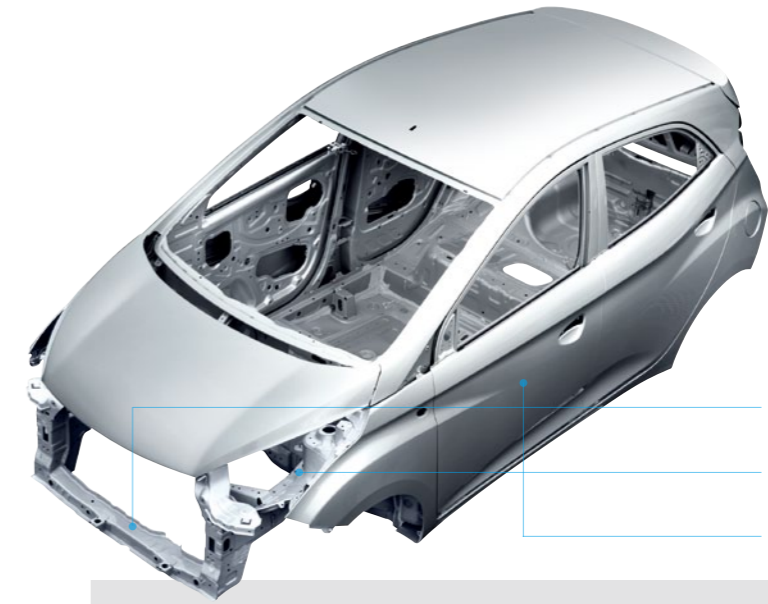


driver-side airbag

confidence

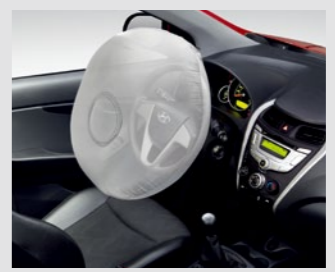
A STRONGER YET LIGHTER STEEL STRUCTURE.

The kind of steel we use helps makes a difference in safety and fuel economy. Steel is so important to Hyundai that we insist on making our very own steel to ensure the highest quality product. For Eon's frontal bumper beam, the most safety critical area, ultra high-tensile strength steel is used to more effectively absorb impact forces and better protect cabin occupants against crash forces. This special steel alloy is not only stronger but also lighter compared to conventional types of steel. So it contributes to a reduction in vehicle weight and improvements in fuel economy.



- Radiator Support Panels**
New optimized design helps improve crashworthiness.
- Upper Body**
Redesign more effectively distributes impact forces.
- Side door strength**
Strengthened for more effective absorption of crash forces.

Driver Airbag
Front driver-side airbag modules used in conjunction with seat belts help reduce the risk of serious injury.



Disc Front Brakes
13-inch ventilated front disc brakes and reliable rear drum brakes deliver impressive stopping power.





EFFORTLESS AND INTUITIVE

More than a car, Eon is a feeling. It's that feeling of comfort and security. In a hectic world when every precious moments counts, Eon offers a stylish, private space to relax and enjoy. With Eon's supportive seats and generous legroom that allows you to stretch out, you will actually start looking forward to driving your Eon. Much more than a tool or an appliance, Eon is an expression of your values: Modern, unpretentious and trustworthy.

And when it comes to cabin appointments, Hyundai never disappoints. At Hyundai, we pride ourselves on always leading our industry when it comes to the standard equipment list: Visit your dealer and be sure to check out Eon's standard appointments. They are substantially more generous than you'd expect to find in the competitive class. That's the Hyundai wow factor.



bulbless cluster guage

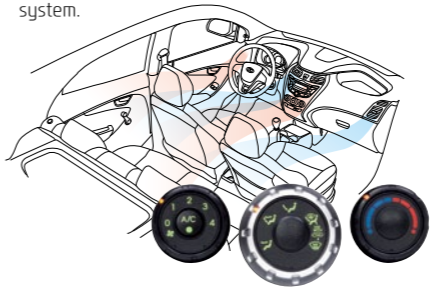
E IS FOR EFFORTLESS EFFICIENCY.

From the high-tech bulbless gauge cluster to the intelligent design shines through in every detail of the Eon cabin. Eon's simple but elegant cockpit puts everything within easy reach to provide a rewarding hands-on experience. Whether it's the simple act of flipping a switch, tuning the radio or adjusting the air conditioning temperature, Eon's good design gives you a taste of the better things in life. Eon comes with front bucket seats, a optional three-spoke steering wheel and a futuristic gauge cluster featuring a three-barrel design ringed by attractive chrome accents. Metallic inserts on the door handles and centre fascia add to the upscale look of the interior. From the door map pockets to the centre console coin tray and glovebox, Eon offers an abundance of storage options that will help keep everything neatly organized.

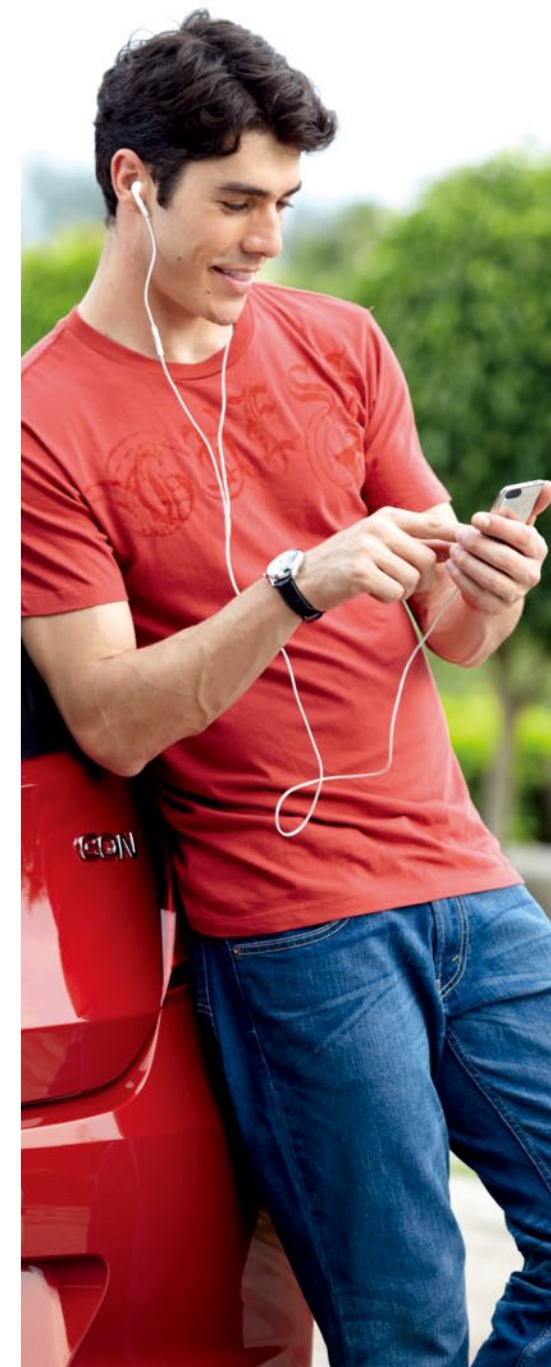


Gauge Cluster
Speed and other vital vehicle information is displayed with maximum impact by a futuristic three-barrel gauge cluster featuring chrome rings and colorful graphic bands.

Heating and Air Conditioning
Whether seated in the front or rear, cabin occupants enjoy first-class ventilation, heating and air conditioning thanks to an upgraded HVAC system.



Full Connectivity
Eon comes with input jacks to accommodate the iPod, USB memory sticks or other types of personal music players.





215 liter trunk capacity

EXTRAORDINARY INTERIOR SPACE

Extra inches make it extraordinary. Hyundai's design ingenuity shines in the creative use of space. Inside, Eon's headroom, legroom and storage space abound despite its highly compact exterior dimensions. Driver and passengers can enjoy a high degree of comfort without sacrificing space for storing their luggage and other travel essentials. And in the back, Hyundai engineers remembered to add extra inches so you can confidently carry a few extra pieces of luggage on those weekend trips. Those inches make all the difference.



Roomier Luggage Space
When it comes to luggage space, Eon offers more than the competition. So you and the rest of the family can pack everything you need for that weekend getaway.



Useful Storage
More storage space keep the car neat and tidy. Eon's storage are deep, spacious and designed to keep maps, travel documents and other important articles within easy reach.



EON'S NUMEROUS SURPRISE AND DELIGHT FACTORS
INCLUDE A REMOTE KEY CONTROL



eyetech



MORE EON



Powerful Clear-Type Headlights

Eon's headlights deliver powerful illumination and offer excellent visibility for safer night-time driving. Their clear-type, jewelled look is an elegant complement to Eon's striking design.



Fog Lamps

For safer driving during foggy weather, Eon's stylish, clear-type fog lamps are mounted as low to the ground as possible to ensure the light beam achieves maximum penetration.



Hexagonal Radiator Grille with Chrome Accent

Eon's handsome looks run in the family. The hexagonal-shaped grille is one of the signature design features of all Hyundai cars that have been designed in Europe.



Roof Micro-Antenna

The roof-mounted antenna features a highly compact, aerodynamic design that ensures crystal-clear reception of both AM and FM radio signals.



Dashboard Upper Tray

Eon's interior designers have carved out a new storage area along the top of the dashboard on the front passenger side. This tray comes in handy.



Glove Box

You'll be surprised at the roominess of the Eon's glove box. Small but ingenious design touches like these prove Hyundai's leadership in small car design.



Door Pocket

Check out the door pockets and their ample storage space. Then admire the elegant design of the door panel which reflects Hyundai's fluidic design principles.



Front Cup Holder

Smart design puts his and her cup holders inside the front centre console so you and your companion can sip your favourite beverages on the go.



Body-Colored Door Handles and Mirrors

Attention to small details like body-colored door handles makes the difference. Side-view mirrors and outside door handles feature body-color paint to impart a smart, upscale look.



Rear Combination Lamps

Elegant rear combination lamps are neatly integrated into the overall design for a unified, harmonized look. Extra-large reflector area promotes better visibility and safety.



Rear Spoiler with HMLSL

For safer braking, Eon is equipped with a high-mounted LED-type stop lamp. It's built into the roof-mounted rear spoiler which promotes aerodynamic efficiency.



Front Power Windows

With delightful features like electrical power-operated windows, Eon gives you not only driving convenience but a small taste of luxury that you deserve.



Centre Console Power Outlet

Recharge your personal electronic devices with the 12V outlet conveniently located next to the front storage bin which is handy for storing odds and ends.



Rear Seat Cup Holder

Designed to hold popular sizes of water bottles or cups, the rear seat cup holder can also double as a storage bin for holding small odds and ends.



Wide Door Armrest

The door armrest features an extra-wide design that promotes driving comfort. The integrated door pull can also be used to store coins, tokens or other small travel essentials.



Rear Parcel Shelf

The rear parcel shelf neatly divides the luggage space and the cabin. A handy place to store something when all the seats are occupied and the luggage space is full.



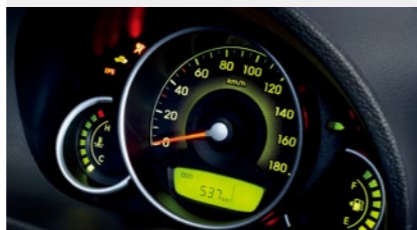
Radio+CD+MP3 Audio

Eon's advanced audio entertainment system delivers outstanding sound quality. With the push of a button, you can enjoy your favourite musical artist or radio program.



Metal Accented Climate Control

The main control knob of Eon's powerful climate control system is centrally mounted and is treated with a pleasing metallic finish for easy identification and operation.



Gauge Cluster

Eon's well-engineered gauge cluster neatly organizes and displays all essential information in an easy-to-read format to promote safe and confident driving.



Tilt Steering with MDPS

The steering column is tilt adjustable to accommodate personal preferences. The new motor-driven power steering system delivers precise control and helps save precious fuel.



Trunk Space

You would be pleasantly surprised at just how much you can actually fit into the luggage compartment of the Eon. It proves small is beautiful indeed.



Spare Tire

Flat tire? No problem with the Hyundai Eon. You will be up and running again in no time because Eon comes equipped with a full-size spare tire and a jack & wrench.



Room Lamp

Large-size room lamp lights up the entire cabin. It comes with switchable so you can turn it on and off as desired.



Room Mirror

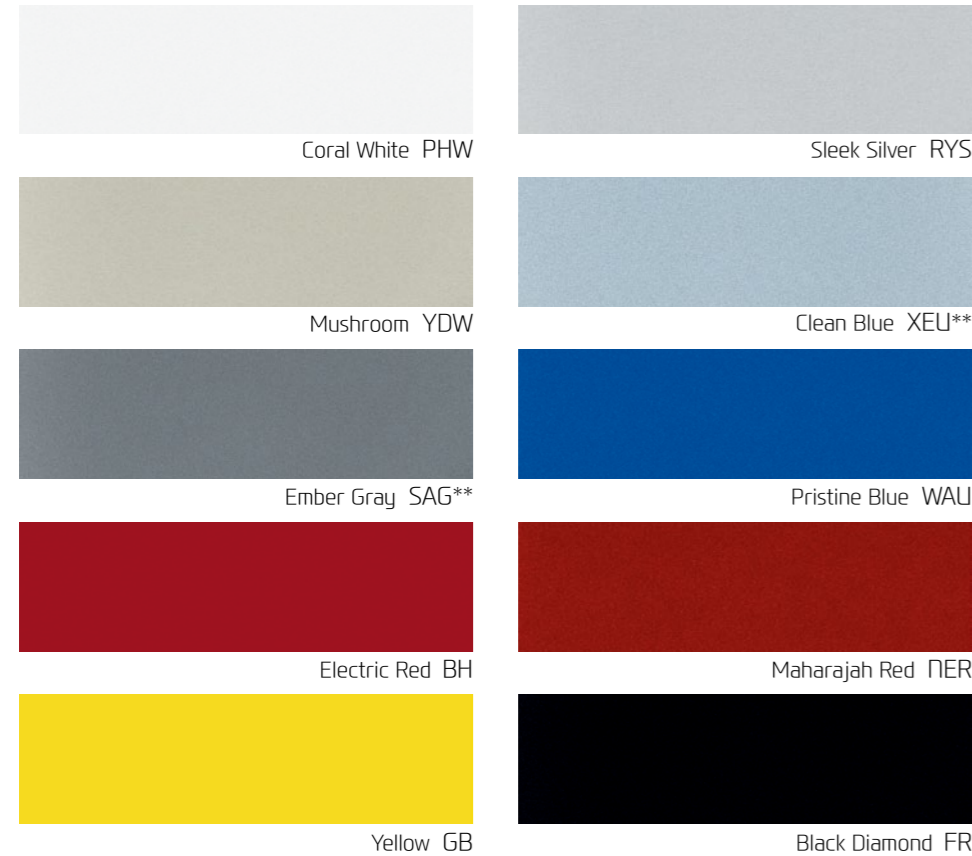
Large rear-view mirror provides excellent coverage and is fully adjustable.

Remote Control Key

Lock and unlock the doors of your Eon from a distance with the remote control key, another one of Eon's delightful convenience features.



EXTERIOR COLORS & INTERIOR TRIMES



** : These colours are available in March 2012.



Top trim with Audio



Standard trim with Audio



SPECIFICATIONS

Engine	
Type	Epsilon 0.8 MPI (Gasoline)
Displacement (cc)	814
Bore x Stroke (mm)	67 x 77
Compression ratio	10.1
Max. Power (ps/rpm)	56
Max. Torque (kgm/rpm)	7.6
Fuel tank capacity (litre)	32

· On leaded fuel engines, power & torque figures vary in accordance with local fuel and climate characteristics.
· Please ask your dealer for available engines.

Suspension	
Front	McPherson strut
Rear	TBA

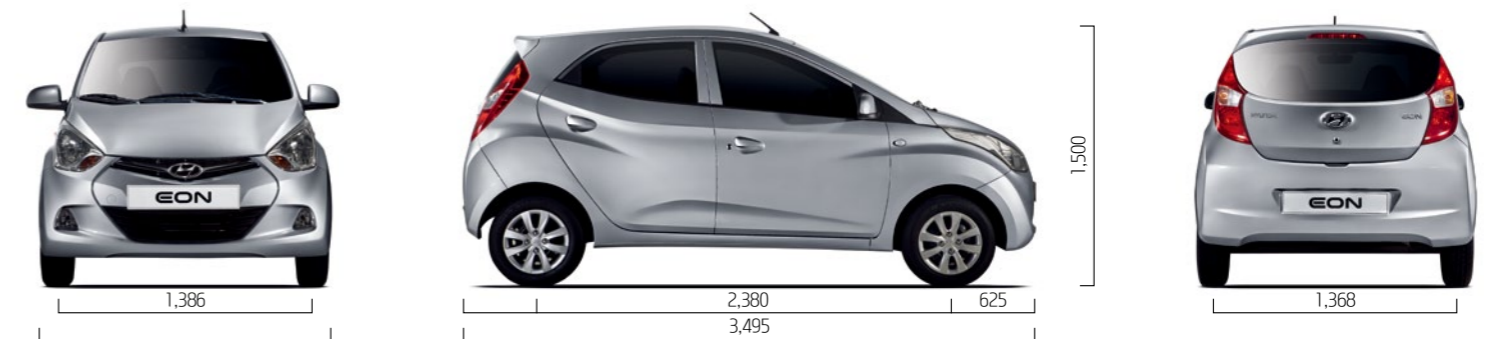
Brakes	
Master Cylinder	Fixed Seal Type
Front	Disc
Rear	Drum
Booster Size	8 inch

Steering wheel	
General	Rack & Pinion
Overall steering gear ratio	16.67 (@20°)
Steering wheel turn (Lock to lock)	3.1
Minimum turning radius (m)	4.55

· Some of the equipment illustrated or described in this catalogue may not be supplied as standard equipment and may be available at extra cost.
· Hyundai Motor Co. reserves the right to change specifications and equipment without prior notice.
· The colour plates shown may vary slightly from the actual colors due to the limitations of the printing process.
· Please consult your dealer for full information and availability on colours and trim.

DIMENSIONS

unit : mm





NEW THINKING. NEW POSSIBILITIES.

People's expectation toward individual mobility requires more than just a convenient means of transportation. The old understanding of cars has become outdated. A car represents individuals' lifestyles, and it became an integral part of their lives. At the same time, the automobile industry has experienced seismic change. Hyundai Motor Company has grown rapidly to become one of the largest automakers, backed by world class production capability and superior quality. We have now reached a point where we need a qualitative approach to bring bigger ideas and relevant solutions to our customers.

This is an opportunity to move forward and we have developed a new brand slogan that encapsulates our willingness to take a big leap. Led by our new slogan and the new thinking underlying it, we will become a company that keeps challenging itself to unlock new possibilities for people and the planet.

Hyundai Motor Company
GEN. LHD 1112 ENG

www.facebook.com/hyundaiworldwide
www.youtube.com/hyundaiworldwide

