



HYUNDAI

NEW THINKING.
NEW POSSIBILITIES.

ELANTRA





Rear combination lamps

Rear combination lamps featuring a design that is even more elegant and sophisticated than before add the perfect finishing touch to Elantra's stylish rear.



Alloy wheels

New alloy wheels sporting an updated look that expresses Elantra's urban image are proposed in 15" to 17" sizes. Lightweight but strong, they provide a dynamic sense of driving.



LED light guides & fog lamps

LED light guides have been added to the headlamps for a more modern and high-tech image. The design of the new fog lamps takes Elantra's sophisticated look one step further.





A front that stirs the emotions, a stylish profile, and an unforgettable back...

Elantra makes the city more brilliant

MORE THAN URBAN









Flex Steer™ system

The Flex Steer™ system allows drivers to choose from normal, comfort, and sport modes according to their preference and driving conditions. The normal mode is adequate for regular driving conditions while the comfort mode lets drivers enjoy lighter steering, for instance, in the city. The sport mode can be chosen for heavier steering or high speed driving.



Seat ventilation system

The fans in the cushions and the back of the seats absorb and ventilate the air inside the car to provide a pleasant ride.



Supervision cluster with 3.4" OLED display

The supervision cluster, with its high-tech design, adopts an OLED display that is clearer than the conventional dot-type display for increased readability and information delivery.



MORE THAN EMOTION

Thoughtful considerations, sophisticated details, and peace of mind...

Inside Elantra, driving becomes emotion



ELANTRA





LED light guides



Bluetooth

* iPhone is a trademark of Apple Inc.



Smart key



Smart power sunroof



Out side mirror repeaters



Pure leather



THE SENSES

You can touch the sophistication.
You can feel the comfort.
You can live the emotion.
You can see the excitement.
Inside Elantra, all senses come alive.



Brown

Brown color interior trim package
Elantra offers an unconventional package in brown, from brown color leather seats to brown color door trims, for an unexpected splash of sophistication.

THINK ABOUT THE FEELING

What kind of feeling do people seek in their driving space? A space where music can touch you and where the smallest detail can warm your heart? That's why inside Elantra, we decided to incorporate only the real.

D. Full auto air conditioning system

The full auto air conditioning system keeps the air inside the car pleasant and maintains it at the desired temperature.

With this function, everyone in the car can experience a more comfortable ride wherever they are seated.



A. Audio system (Radio, CD, MP3, Bluetooth)
The audio system with its 4.3" color TFT LCD can be operated conveniently thanks to its touch pad display. The bluetooth function not only lets drivers listen to music, but also allows them to make telephone calls safely while driving.

B. Audio system (Radio, CD, MP3)
The high quality audio system breathes life into your music.

C. Steering wheel remote control system
The steering wheel remote control lets drivers use audio and other functions conveniently while driving without distracting their view to help them drive safely.



E. Rear air ventilation system
The rear air ventilation keeps the air temperature pleasant for passengers seated in the back.

F. Front & rear seat warmer
Warmers are installed in all the seats in the Elantra, allowing the driver and passengers to enjoy a snug ride even during the coldest winters.

G. Heated steering wheel
The steering wheel comes with a heating function keeping the driver's hands nice and warm when driving in cold weather.

ADD CONSIDERATION

What must be added, and what taken out, to achieve comfort in its purest form? Elantra looked for the answer by reconsidering every single moment that drivers and passengers spend in a car, from the moment they get on the car and turn on the engine right up to the moment they turn off the engine and get off the car. Adding consideration and taking out pretension...

> Driver's power seat adjustment system

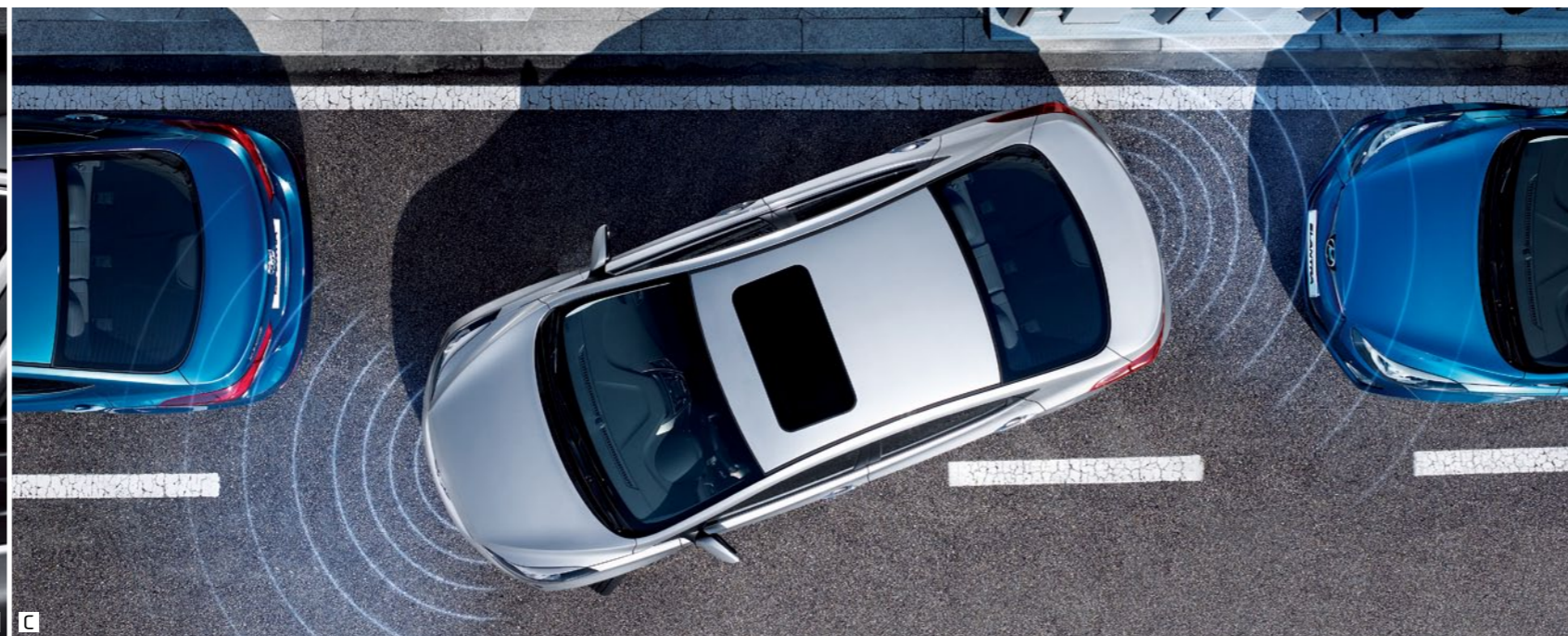
The driver's power seat adjustment function provides a multitude of possibilities with its sliding, reclining, height adjuster, tilt and electric lumbar support modes allowing each driver to find his/her optimal seat position.

D. Power window controls

The window controls, with their appealing and easy-to-use design, are placed for convenient operation when driving.



A



C



D



E

E. Rear seat folding system (6:4 type)

Rear seats are not only comfortable, but can also be transformed into additional cargo space for large or long loads by conveniently being folded into a 6:4 ratio.

* 6:4 seats are available only on the GLS model.

F. Child anchors

Built-in child anchors help young parents with infants to travel in safety by allowing them to mount child seats in a more secure way.

* Child anchors are only available in select regions.



B

A. Rear-view display system

The rear-view display system recognizes the angle at which drivers are holding the steering wheel and shows them the trajectory to follow to help them park the car more conveniently from the back.

B. Electronic chromic mirror (ECM) with Rear camera display (RCD) system

The ECM, which effectively prevents glaring in the eyes, includes an rear camera display system to help drivers secure better rear view visibility.

C. Front & rear parking assist system (PAS)

Sensors in the front and back of the car that assess the distance between the car and obstacles and alert drivers when necessary come in handy when parking in a narrow space.



F



THE REVERSE

It shakes. It's stable.
It's noisy. It's silent.
It rattles. It's calm.
The many "reverses" that
take place in and out of Elantra...



ESC Electronic stability control (ESC)
ESC continuously tracks how the driver maneuvers the steering wheel in comparison to the actual rotation of the car. It automatically applies braking to each wheel allowing the driver to have complete control over the movement of the car. In particular, ESC effectively controls the car from skidding when cornering.

STRUCTURAL PERFORMANCE

What differentiates a car's performance from its peers? A powerful engine performance based on a stable body frame, the ability to control such performance, and an exhaustive list of safety features that provide ways to overcome possible limitations—Elantra believes that a harmonious balance of all of the above is what it takes to make the difference.

D. Auto cruise control

Auto cruise control allows drivers to preset their desired speed for a drive without stepping on the pedals.

E. 15" front disk brakes

15" front disk brakes with exceptional braking power ensure a safer drive under diverse road conditions.



A



C



D



F



G



B

A. 1.8 MPI gasoline engine

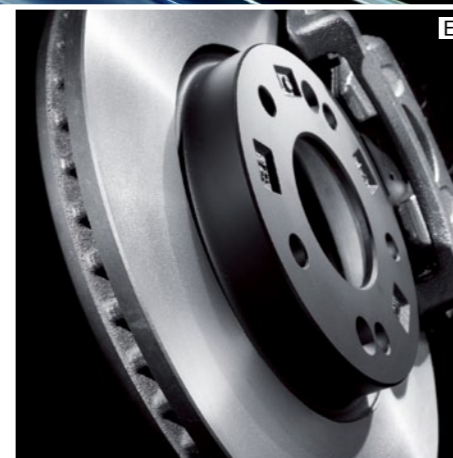
State-of-the-art technologies have been applied to the 1.8 MPI gasoline engine to provide for an even more dynamic driving experience in the city, with maximum output of 150 ps at 6,500 rpm and maximum torque of 18.2 kg-m at 4,700 rpm.

B. 1.6 MPI gasoline engine

The 1.6 MPI gasoline engine with dual CVVT, delivering maximum output of 130 ps at 6,300 rpm and maximum torque of 16.0 kg-m at 4,850 rpm, offers power, fuel efficiency and eco-friendliness all in one.

C. 6-speed automatic transmission

The automatic transmission, with an enhanced grip thanks to the ergonomic design, ensures maximum driving satisfaction with its high-precision response and exceptional durability.



E

F. Advanced high-strength steels (AHSS)

Unlike ordinary run-of-the-mill steels, Advanced high-strength steels are high-performance steel alloys applied to critical areas of the body shell where additional reinforcement is required. The benefit is superior crash protection.

G. 6-airbag system

Elantra comes with 6 airbags: dual front airbags for the driver and passenger, dual front seat-mounted airbags, and dual side curtain airbags which offer additional protection against side impacts.

A space that offers different memories depending on who you're with—the ultra urban Elantra



CHOOSE FROM DETAIL TO DETAIL

The details that you choose reflect your expectations and taste. They show what you value, and what goes well with you... As a car that was conceived to let you enjoy the city to perfection, Elantra, too, has opted to choose only the most sophisticated design, practical functions, and a fresh experience for itself.



16" alloy wheels 17" alloy wheels 15" alloy wheels 15" steel wheels



Radiator grille

A sleek radiator grille with sharp, sophisticated details reinforces the luxuriousness of Elantra.

HID headlamps

HID headlamps, with a lower energy consumption level and a longer life span than conventional headlamps, provide high intensity light that secures increased visibility.

Chrome-coated outside handles

Chrome-coated outside handles reflecting a sophisticated design offer superior grip and add a sense of elegance to Elantra's profile.

Rain sensor & aero blade wipers

A built-in rain sensor senses the amount of rainfall and automatically controls the speed of the wipers. Aero blade wipers with superior adhesiveness ensure increased visibility.

Engine start/stop button

The engine can be turned on and off with the touch of a button, making the start and finish of driving Elantra even more convenient.

Auto light control

The auto light control senses the change of light intensity surrounding the car and automatically turns the lights on or off. With this function, drivers do not have to operate the switches themselves.

Connectivity (AUX / USB)

AUX / USB input jacks allow drivers to connect and listen to various audio devices conveniently.

Glove box (cooling)

The glove box comes with a cooling function so that drivers and passengers can enjoy cool drinks for an even more pleasant ride.

Power window

Electrically-powered safety window controls sense when something is caught in the windows and lower them automatically.

High-mounted stop lamp

The high-mounted stop lamp not only adds an accent to the rear of Elantra, but also helps to secure a safe distance with the car behind.

Door scuffs

Luxuriously-designed door scuffs visually reaffirm the pleasure of riding Elantra every time you get on and off the car.

Silica tires

Elantra comes with silica tires that provide a superior grip even in the rain and a higher fuel efficiency made possible by a lower rolling resistance.

Sun visor

Detachable sunvisor effectively blocks out the sun to allow safer driving.

Overhead console

A sunglasses case is placed in a spot that is easy to reach even while driving.

Floor console cup holders

Cup holders with a simple, clean-cut design convey the care and attention that has been given to even the smallest detail in Elantra.

Pedals

Pedals in metal, which is not only durable but also less prone to soiling, give a sense of sportiness to Elantra.

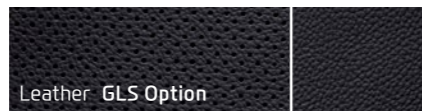
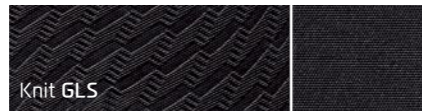
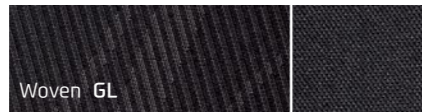
INTERIOR TRIMS



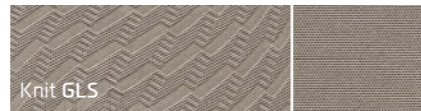
Gray two-tone



Black one-tone



Beige two-tone



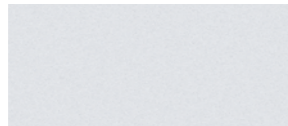
Brown color package



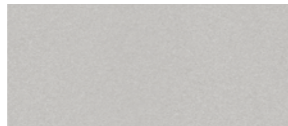
EXTERIOR COLORS



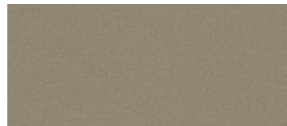
WAW Polar white



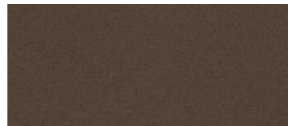
T8S Platinum silver



RW5 Ice wine



S3Π Satin amber



XΠ5 Coffee bean



PR2 Fiery red



Π4B Marina blue



ZU3 Dazzling blue



UB5 Moonlight blue



UY5 Sparkling metal



YT3 Iron gray



ΠKA Phantom black

SPECIFICATIONS

Type		1.6 MPI gasoline engine	1.8 MPI gasoline engine	
Dimensions (mm)	Exterior	Overall length (mm)	4,550	
		Overall width (mm)	1,775	
		Overall height (mm)	1,445	
		Wheel base (mm)	2,700	
	Interior	Wheel tread (mm)	Front	15" wheels : 1,563 / 16" wheels : 1,549 / 17" wheels : 1,551
			Rear	15" wheels : 1,576 / 16" wheels : 1,562 / 17" wheels : 1,564
		Head room (mm)	Front	1,017
			Rear	943
		Leg room (mm)	Front	1,108
			Rear	847
Shoulder room (mm)	Front	1,420		
Rear	1,393			
Engine	Engine type	DOHC with Dual CVVT		
	Displacement (cc)	1,591	1,797	
	Max. Power (ps / rpm)	130 / 6,300	150 / 6,500	
	Max. Torque (kg-m / rpm)	16.0 / 4,850	18.2 / 4,700	
Brakes		Dual-diagonal, split-circuit, power-assisted braking system with pressure proportioning valve In case of ABS/ESC : Electronic brake force distribution(EBD)		
Suspension		Front / Rear		
Tire		195 / 65 R15, 205 / 55 R16, 215 / 45 R17		
Fuel tank (liter)		50		

- The above values are results from internal testing and are subjected to change after validation.
- Some of the equipment illustrated or described in this catalog may not be supplied as standard equipment and may be available at extra cost.
- Hyundai Motor Company reserves the right to change specifications and equipment without prior notice.
- The color plates shown may vary slightly from the actual colors due to the limitations of the printing process.
- Please consult your dealer for full information and availability on colors and trims.

DIMENSIONS

Unit : mm



1,551*
1,775



865 | 2,700 | 985
4,550



1,564*

* Wheel tread • 15" alloy wheels (Front/rear) : 1,563/1,576 • 16" alloy wheels (Front/rear) : 1,549/1,562 • 17" alloy wheels (Front/rear) : 1,551/1,564

NEW THINKING. NEW POSSIBILITIES.

People's expectation toward individual mobility requires more than just a convenient means of transportation. The old understanding of cars has become outdated. A car represents individuals' lifestyles, and it became an integral part of their lives. At the same time, the automobile industry has experienced seismic change. Hyundai Motor Company has grown rapidly to become one of the largest automakers, backed by world class production capability and superior quality. We have now reached a point where we need a qualitative approach to bring bigger ideas and relevant solutions to our customers. This is an opportunity to move forward and we have developed a new brand slogan that encapsulates our willingness to take a big leap. Led by our new slogan and the new thinking underlying it, we will become a company that keeps challenging itself to unlock new possibilities for people and the planet.



Hyundai Motor Company
<http://worldwide.hyundai.com>
GEN. LHD 1507 ENG. KM-KM

Copyright © 2015 Hyundai Motor Company. All Rights Reserved.