

2014

---

HYUNDAI  
**ELANTRA**



# THREE CHOICES. ALL OF THEM WISE.

---

## Presenting the Hyundai Elantra Family.

When you bring a new car home from the dealership, it becomes part of your family, right? Here's something you should know about the Hyundai Elantra: It's part of a family, too – the award-winning Elantra family.

There's the stylish Elantra Sedan, which was honored as North American Car of the Year by an international panel of automotive writers following the introduction of its Fluidic Sculpture design in 2011. The following year, a sporty Elantra Coupe and versatile 5-door Elantra GT joined the lineup.

Designed to satisfy the diverse needs of America's drivers, all of our Elantra models share familiar traits. Each gets its fluid lines from our Hyundai Design Studio in Irvine, California. Each uses aerodynamic design and weight-saving innovations to boost fuel efficiency. And each invites you into a spacious interior filled with exceptional comfort, safety and conveniences like Hyundai Blue Link,<sup>®</sup> our innovative suite of technologies that lets you navigate, connect and discover like never before.<sup>1</sup>

Best of all, each comes at a price point that's as appealing as the cars themselves. The Hyundai Elantra has been ranked highest among all compact cars in its class for residual value over each of the past three model years.<sup>2</sup> The 2013 Elantra Sedan also earned the industry's highest safety ranking: The Insurance Institute for Highway Safety (IIHS) "Top Safety Pick+" award.<sup>3</sup>

Given all of that, it's easy to see why more and more people are welcoming a member of the Elantra family into their own family.

<sup>1</sup>Standard on Elantra Sedan Limited, optional on Elantra Coupe and Elantra GT. <sup>2</sup>ALG, 2011-2013. <sup>3</sup>IIHS rates vehicles good, acceptable, marginal, or poor based on performance in a moderate overlap frontal crash, small overlap frontal crash, side impact and rollover, plus evaluations of seat/head restraints for protection against neck injuries in rear impacts. To qualify for the 2013 "Top Safety Pick+" award, vehicles must earn good ratings for occupant protection in at least 4 of 5 evaluations and no less than acceptable in the fifth test. For details, visit [www.iihs.org](http://www.iihs.org).



---

ELANTRA SEDAN  
2013 IIHS TOP SAFETY PICK+

---



ELANTRA COUPE Technology Package in Shimmering Silver / SEDAN LIMITED Technology Package in Titanium Gray Metallic / GT Tech Package in Shimmering Silver



<sup>1</sup>Fuel economy estimated by EPA for comparison only. Your actual mileage may vary with options, driving conditions, driving habits and the vehicle's condition. <sup>2</sup>Government star ratings are part of the National Highway Traffic Safety Administration's (NHTSA's) New Car Assessment Program ([www.safercar.gov](http://www.safercar.gov)). Insurance Institute for Highway Safety (IIHS) 2013 Top Safety Pick based on 40 MPH frontal crash test, 31 MPH side-impact test, 20 MPH rear-impact test and availability of Electronic Stability Control. <sup>3</sup>Automatic transmission optional on Elantra Sedan/Coupe, standard on Elantra GT. <sup>4</sup>Standard on Elantra Coupe, GT and Sedan Sport models. <sup>5</sup>Vehicle Stability Management cannot control your vehicle's stability under all driving situations. VSM is not a substitute for safe driving practices. No system, no matter how advanced, can overcome physics or correct poor driving. The driver is always responsible for controlling the vehicle and must use caution to avoid loss of control in all driving conditions. Speed, road conditions and driver steering input will affect whether VSM can help prevent loss of control. See Owner's Manual for details.



**ADVANCED ENGINE TECH** The Elantra's available 2.0-liter engine draws its responsive power from Gasoline Direct Injection (GDI) and Dual Continuously Variable Valve Timing. GDI atomizes fuel directly into each cylinder's combustion chamber for added power and greater fuel efficiency with cleaner emissions.



**ACTIVE ECO SYSTEM** At the press of a button on the dashboard, Elantra's Active Eco System modifies engine and automatic transmission controls to smooth out shift points and help boost fuel efficiency.<sup>3</sup> With prices at the pump being what they are, every extra drop counts.

ELANTRA ENGINEERING

# FORGET THAT IT'S A COMPACT. OUR ENGINEERS DID.

EPA-Estimated  
**34** MPG HWY  
ELANTRA GT (M/T)<sup>1</sup>

EPA-Estimated  
**38** MPG HWY  
ELANTRA SEDAN SE (A/T)<sup>1</sup>

ELANTRA SEDAN LIMITED Technology Package in Radiant Silver

## PERFORMANCE & SAFETY FEATURES

*(See specifications section for availability by model)*

- 145 HP, 1.8L OR 173 HP, 2.0L ENGINE
- SPORT-TUNED SUSPENSION
- GASOLINE DIRECT INJECTION<sup>4</sup>
- 15" – 17" ALLOY WHEELS
- VEHICLE STABILITY MANAGEMENT<sup>5</sup>
- HILLSTART ASSIST CONTROL
- DRIVER'S BLIND SPOT MIRROR
- PROJECTOR HEADLIGHTS  
WITH LED ACCENTS
- DRIVER SELECTABLE  
STEERING MODE
- LED TAILLIGHTS

Like most car companies, Hyundai puts its vehicles through rigorous tests at remote, sometimes even secret locations. (Ours is no secret: It's in the high desert of Southern California.) We push our vehicles to the breaking point – and beyond – to ensure they're built to last. It's one reason why Hyundai has had the confidence to offer America's Best Warranty for the past 10 years.

But the real test of an automaker's design and engineering abilities comes when it's time to build a compact car. How do you endow it with all the efficiency of smaller cars, but none of the drawbacks? How do you make it feel larger and less compact in the way it comforts its passengers, and protects its occupants?

Our engineers started by forming Elantra from high tensile steel. Lightweight yet strong and rigid, it helps create a car that's reassuring, quiet and safe: The 2013 Elantra Sedan earned a 5-Star crash rating from the U.S. government, and a Top Safety Pick+ award from the IIHS.<sup>2</sup> Next, they gave Elantra a spirited 16-valve aluminum engine that maximizes power and fuel economy. The result is just what you'd expect from Hyundai – a responsive, secure and spacious automobile that brings practical and premium together in exquisite fashion.





<sup>1</sup>Proximity key and power sunroof standard on Elantra Sedan Sport, optional on Elantra GT, Limited and Coupe models. <sup>2</sup>Bluetooth® standard on Elantra Sedan Limited, Coupe and GT models, optional on SE model. The Bluetooth® wordmark and logos are registered trademarks owned by Bluetooth SIG, Inc., and any use of such marks by Hyundai is under license. Other trademarks are those of their respective owners. <sup>3</sup>All SiriusXM® Services require a subscription sold separately after a trial period. If you decide to continue your service at the end of your trial subscription, the plan you choose will automatically renew and bill at then-current rates until you call 1-866-635-2349 to cancel. See SiriusXM Customer Agreement for complete terms at [www.siriusxm.com](http://www.siriusxm.com). Other fees and taxes will apply. All fees and programming are subject to change. Sirius Satellite service is available only to those at least 18 years of age in the 48 contiguous USA states, DC, and Puerto Rico (with coverage limitations). SiriusXM Internet Radio service is available throughout our satellite service area and in AK and HI. ©2013 Sirius XM Radio Inc. Sirius, XM and all related marks and logos are trademarks of Sirius XM Radio Inc.



**TOUCHSCREEN MAGIC** Seldom has so much technology been found at such an affordable price. An available navigation system can be operated with voice commands or an interactive 7" touchscreen. SiriusXM® data services like NavTraffic®, NavWeather®, XM Sports Ticker® and XM Stock Ticker® give you a clear picture of current traffic, weather, stocks and sports scores.<sup>3</sup>



**THREE'S A CHARM** Elantra's next-generation 3.0 audio system leads with an improved screen design, better audio controls and enhanced voice recognition. A new "jukebox" feature lets you copy music from a USB stick directly into the head unit's dedicated storage. An available 4.3" LCD touchscreen also includes a rearview camera that takes the guesswork out of backing up.



**110.4** CUBIC FEET  
INTERIOR VOLUME

ELANTRA SEDAN LIMITED Technology Package in Beige Leather

#### COMFORT & TECHNOLOGY FEATURES

*(See specifications section for availability by model)*

- HEATED REAR SEATS
- BLUETOOTH® HANDS-FREE PHONE WITH AUDIO STREAMING
- COLOR TOUCHSCREEN AUDIO
- DUAL-ZONE AUTOMATIC TEMPERATURE CONTROLS
- REARVIEW BACKUP CAMERA
- PROXIMITY KEY ENTRY WITH PUSH-BUTTON START
- POWER SUNROOF
- SLIDING CENTER ARMREST
- PANDORA® INTEGRATION

ELANTRA COMFORT

## REMEMBER THE EXPRESSION “GETTING YOUR MONEY’S WORTH?”

Slip inside a 2014 Elantra. Notice the quality of fit and finish. And the level of technology at your fingertips. Clearly, Elantra has benefited from everything Hyundai has learned building luxury cars like Genesis and Equus.

As you settle behind the wheel, push a button to slide open the power sunroof (it's a panoramic sunroof in Elantra GT), and push another button to electronically start the car.<sup>1</sup> Then watch as the available navigation system with rearview camera comes to life, and to your aid. Listen as the Bluetooth® hands-free phone system responds to your voice commands.<sup>2</sup> And be sure to ask your passengers in back how they like the heated rear seats that come standard on our Limited model. Just be prepared for oohs and ahhs.





<sup>1</sup> Comparisons vs. 2013 competitive models. <sup>2</sup> Elantra SE with automatic transmission. Fuel economy estimated by EPA for comparison only. Your actual mileage may vary with options, driving conditions, driving habits and the vehicle's condition.



**SAFETY ARSENAL** Elantra Sedan offers exceptional standard safety features like six airbags, a driver's blind spot mirror and a host of technologies designed to enhance traction, cornering and braking. These technologies also earned a 5-Star overall safety rating in 2013 from the U.S. government, and a Top Safety Pick+ honor from the Insurance Institute for Highway Safety.



**PREMIUM FEATURES** It's time you got everything you wanted in a stylish sedan. Like a new, smarter navigation system with a rearview camera. And a Bluetooth® hands-free phone system with voice recognition, phonebook sync and wireless audio streaming. Elantra Limited also offers dual automatic temperature control with a CleanAir Ionizer and auto defogging system.





ELANTRA SEDAN SPORT in Geranium Red

2014 ELANTRA SEDAN

# THE FOUR-DOOR SEDAN, REFINED.

At the head of our Elantra family is the Elantra Sedan, an exceptionally roomy four-door compact that's so spacious inside, the U.S. Environmental Protection Agency classifies it as a midsize sedan (by comparison, the Honda Civic and Ford Focus are still considered compacts). Elantra's class-above roominess also features more interior volume than some premium models like Acura ILX, Volkswagen CC and Nissan Maxima.<sup>1</sup>

Drive it, and you may do a little reclassifying of your own. Thanks to state-of-the-art technologies employed by its all-aluminum 4-cylinder engine, Elantra Sedan has the kind of torque that translates into powerful throttle response. A new Sedan Sport model moves the needle even higher with engine, suspension and steering enhancements that pay off the car's performance-minded styling cues.

It's refinement you'll appreciate every time you accelerate onto the freeway or pull out to pass. Not to mention each time you pass by the gas station: Elantra Sedan gets up to an EPA-estimated 38 MPG highway.<sup>2</sup> Elantra's advanced engineering also makes for a clean machine: Our automatic transmission models are classified by the U.S. government as ULEV, short for Ultra-Low Emissions Vehicles.



**LUXURY SEATING FOR ALL** No matter where you sit, Elantra Limited offers an exceptional level of leather-clad comfort. Up front, a 6-way power driver seat with lumbar support accommodates an ideal driving position for any size of driver. Elantra is also the first compact car to feature heated seats for both front and rear passengers.



2014 ELANTRA COUPE

# COOPED UP? NOT IN THE ELANTRA COUPE.

With their sleek styling, coupes just look cool, don't they? But some can be a little too cozy inside for drivers and passengers. Then, there's Elantra Coupe, which is so spacious, it's been bumped up to the next interior size category.<sup>1</sup> It's premium real estate accentuated by heated front sport seats and options like a navigation system with rearview camera, a proximity key entry with push-button start and a premium audio system. All of which gets you ready to enjoy some serious driving fun.

But first, all eyes are drawn to Elantra Coupe's stylish, fluidic design. From its signature hexagonal grille with piano black accents to its sculpted hood creases, rear spoiler and 17" alloy wheels under flared wheel arches, you can rest assured the visual cues aren't just eye candy.

Elantra Coupe is a thrill ride, thanks in part to its strict adherence to a Hyundai engineering dictate: Keep the weight down, and watch the performance go up. Gear heads call it power-to-weight ratio, and in the 2014 Elantra Coupe, a new 2.0-liter Gasoline Direct Injection 4-cylinder engine adds to the power side of that equation with 173 horsepower – an increase of 25 horses from the previous model.<sup>2</sup>



ELANTRA COUPE Technology Package in Shimmering Silver



<sup>1</sup>www.epa.gov. <sup>2</sup>166 HP on PZEV models.



<sup>1</sup>34 MPG on models with manual transmission. \*Blue Link<sup>SM</sup> subscription service agreement required. Features vary by subscription plan. Terms and conditions of subscription agreement apply. Blue Link service works using CDMA-based cellular networks in the 50 United States. Blue Link service is not available where there is no cellular coverage, particularly in enclosed or remote areas. Service availability may be affected by the signal strength, foliage, weather, topographical conditions (mountains) and nearby structures (tall buildings, tunnels) and other factors. For additional details and system limitations, visit [HyundaiBlueLink.com](http://HyundaiBlueLink.com).



**POWER WITH PRECISION** A new 2.0-liter Gasoline Direct Injection 4-cylinder engine now features 173 horsepower (that's a 17% increase over last year). It's power that the Elantra GT puts into motion through an available sport-tuned suspension and 17" aluminum alloy wheels for even higher levels of responsiveness.



**DRIVER SELECTABLE STEERING**

Drivers can adapt the Elantra GT to one of three steering modes: Comfort, Normal or Sport. Comfort offers the greatest ease of steering, ideal for city driving and parking maneuvers. Sport is optimized for higher-speed freeways or winding roads, while Normal is ideal for a mix of driving conditions.

2014 ELANTRA GT

# EXPRESSIVE STYLE. IMPRESSIVE SUBSTANCE.

Elantra GT is all about self-expression. Everybody's a bit different, after all. Which is why we gave Elantra GT the versatility to be whatever you want it to be. Need it to be a performance sedan? Elantra GT's sport-tuned suspension delivers quick reflexes and precise handling. Need it to give you the cargo room of a compact CUV? No problem. Fold flat the 60/40 split rear seats, and you've got a rear cargo area nearly double that of most compact sedans. At up to 51 cubic feet, it's space that rivals many of those so-called crossover utility vehicles.

It's also why we offer Elantra GT with packages featuring names like Tech and Style. On the road, Driver Selectable Steering Mode lets you customize your driving experience even further. A first for both Hyundai and the compact segment, it's an innovation that fits the Elantra GT's driver-oriented mission.

Elantra GT's performance credentials are legit. At the same time, its light weight helps achieve up to an EPA-estimated 33 MPG highway.<sup>1</sup> Of course, light does not mean stripped: Elantra GT is offered with features like an available panoramic sunroof and rearview camera. It can also be equipped with Blue Link,<sup>®</sup> Hyundai's technological command center that keeps you connected to your busy life with added levels of convenience.<sup>2</sup>

ELANTRA GT Tech Package in Shimmering Silver



**WIDE-OPEN SKIES** In the time it takes you to reach for your sunglasses, an available panoramic sunroof opens up wide with the press of a button to bathe Elantra GT's passengers in sunbeams. A sliding sunshade can also be deployed when you prefer shade over the sun.



ASSURANCE CONNECTED CARE

# NOW MORE THAN EVER, HYUNDAI'S GOT YOUR BACK.

Hyundai made a name for itself by offering assurance that, when you need us, we'll be there. And now, our commitment goes even further with Assurance Connected Care, powered by Blue Link. It's Hyundai's newest way of keeping you assured and secured while you're driving. Assurance Connected Care includes features like Monthly Vehicle Reports that summarize how your Elantra is performing. Automatic Collision Notification that pinpoints your location in emergencies.<sup>1</sup> And Maintenance Alerts that offer helpful reminders for things like tune-ups and oil changes.

Technically, convenience and peace-of-mind aren't listed as standard features. But you'd never know it, thanks to our Enhanced Roadside Assistance. Or Service Link, which makes it easy to schedule service appointments, even from your car. Assurance Connected Care is just one more innovative way Hyundai Assurance has you covered when it counts.<sup>2</sup>

## HYUNDAI Assurance

CONNECTED CARE

Powered by  BlueLink



<sup>1</sup> Blue Link agents will contact existing emergency service responders. Only use Blue Link and corresponding devices when it is safe to do so. <sup>2</sup> Assurance Connected Care requires an active Blue Link subscription and includes 3 years of the Blue Link Assurance Package. Three-year term starts from the new-vehicle date of first use and is available for new-vehicle purchases and leases on or after May 16, 2013. Cellular and GPS coverage required. Blue Link is available on most 2013 and 2014 Hyundai



HYUNDAI BLUE LINK

# LIFE, MADE EASIER.

Blue Link is Hyundai's advanced technology platform that powers a suite of innovative infotainment, safety and service features. In addition to Assurance Connected Care, Blue Link includes a variety of other enhancements that let you navigate, connect and discover with the push of a button. Or the sound of your voice. For details, visit [HyundaiBlueLink.com](http://HyundaiBlueLink.com).



**LIKE A UNIVERSAL REMOTE** Download the Blue Link Mobile App to your smartphone, and you'll have remote access to your vehicle from virtually anywhere. You can remotely lock and unlock your car. Or flash the lights and honk the horn to find it in a crowded parking lot. You can also start your car remotely so the temperature inside is just right by the time you arrive.<sup>3</sup>



**LIKE A SECURITY FORCE** You can't keep your eyes on your Hyundai all the time. But Blue Link can certainly help. Stolen Vehicle Recovery can help locate your Elantra in a pinch, while Geo-Fence and Curfew Alerts notify you (by text, automated phone message or email) when the geography or drive-time boundaries you've set are exceeded.



**LIKE AN EXPERT GUIDE** More than getting you to your destination, Blue Link offers features that can tell you what you'll find when you arrive. Use voice commands to find the fastest routes with the least amount of traffic, points of interest you can download to your navigation system for turn-by-turn directions, and more.

vehicles. Features and fees vary by subscription plan. For details and limitations, visit [Hyundai.com](http://Hyundai.com) or your authorized Hyundai dealer. Blue Link is a registered trademark of Hyundai Motor America. Hyundai is a registered trademark of Hyundai Motor Company. All rights reserved. ©2013 Hyundai Motor America. <sup>3</sup>Remote Vehicle Start only available for push-button start equipped vehicles with automatic transmission. Not available on all models.



## 2014 ELANTRA LINEUP



### ELANTRA SEDAN SE

#### KEY STANDARD EQUIPMENT

- 145 HP, 1.8L 4-cylinder engine with Dual Continuously Variable Valve Timing
- 6-speed manual transmission or available 6-speed automatic transmission with SHIFTRONIC® & Active ECO System
- Motor Driven Power Steering with Driver Selectable Steering Mode
- Remote keyless entry system with alarm
- Power door locks & windows
- One-touch driver auto-down window
- Air conditioning
- Tilt-and-telescopic steering wheel
- Cruise control (A/T only)
- AM/FM/SiriusXM/CD/MP3 audio system with 6 speakers
- iPod®/USB auxiliary input jacks
- Center console with storage compartment & armrest

#### PREFERRED EQUIPMENT PACKAGE

##### SE A/T Standard Equipment Plus:

- + Heated front seats
- + Steering wheel audio controls
- + Bluetooth® hands-free phone system with voice recognition & streaming audio
- + 4.3" color touchscreen audio with rearview camera
- + Illuminated vanity mirrors with sunvisor extensions

- 60/40 split fold-down rear seatback
- Rear-seat center armrest with cupholders
- Front seatback pockets & front/rear door map pockets
- 6-airbag safety system with advanced dual front airbags & Occupant Classification System
- Vehicle Stability Management System
- Electronic Stability & Traction Control Systems
- Hillstart Assist Control
- 4-wheel disc Anti-lock Braking System with Brake Assist & Electronic Brake-force Distribution
- Tire Pressure Monitoring System
- Front 2-speed intermittent wipers
- Adjustable head restraints for all seating positions
- Driver's blind spot mirror
- Daytime Running Lights
- Dual heated power side mirrors
- 15" alloy wheels

- + Cloth insert door trim
- + Sliding center armrest
- + Illuminated ignition
- + Automatic headlights
- + Front fog lights
- + 16" alloy wheels



### ELANTRA SEDAN SPORT

##### Elantra SE Preferred Equipment Package Plus:

- + 173 HP, 2.0L Gasoline Direct Injection 4-cylinder engine with Dual Continuously Variable Valve Timing & chrome exhaust<sup>1</sup>
- + 6-speed manual or available 6-speed SHIFTRONIC® automatic transmission with Active ECO System
- + Sport-tuned suspension & steering<sup>2</sup>
- + Proximity key entry with push-button start
- + Leather-wrapped steering wheel & shift knob
- + Leather seating surfaces
- + Power 6-way adjustable driver seat with lumbar support

- + One-touch driver auto-up window
- + Front aluminum entrance sills
- + Power tilt-and-slide glass sunroof with sunshade
- + Aluminum sport pedals
- + Projector headlights with LED accents
- + LED taillights
- + Rear lip spoiler
- + Side mirrors with integrated turn signal
- + Black chrome grille accents
- + Chrome beltline molding
- + 17" alloy wheels

<sup>1</sup>166 HP on PZEV models

<sup>2</sup>Replaces Driver Selectable Steering Mode



### ELANTRA SEDAN LIMITED

#### SE Preferred Equipment Package Plus:

- + Power 6-way adjustable driver seat with lumbar support
- + Leather-wrapped steering wheel & shift knob
- + Heated front & rear leather seats
- + One-touch driver auto-up window
- + Front aluminum entrance sills
- + Blue Link® telematics system
- + Side mirrors with integrated turn signal

- + Projector headlights with LED accents
- + LED taillights
- + Black chrome grille accents
- + Limited rear badge
- + Chrome beltline molding
- + Chrome door handles
- + 17" alloy wheels

#### TECHNOLOGY PACKAGE

- + 7" touchscreen navigation system
- + Rearview camera
- + 360-Watt premium audio with external amp

- + Proximity key entry with push-button start
- + Dual automatic temperature control
- + Power tilt-and-slide sunroof with sunshade

EXTERIOR DIMENSIONS	SEDAN			COUPE	GT
	SE	Sport	Limited		
Wheelbase (in)	106.3	<	<	106.3	104.3
Overall Length (in)	179.1	<	<	178.7	169.3
Overall Width, excluding mirrors (in)	69.9	<	<	69.9	70.1
Overall Height (in)	56.3	<	<	56.5	57.9
Tread Width, front/rear 15" wheels (in)	61.5 / 62.0	–	–	–	–
Tread Width, front/rear 16" wheels (in)	61.0 / 61.5	–	–	–	61.0 / 61.5
Tread Width, front/rear 17" wheels (in)	–	61.1 / 61.6	<	61.1 / 61.6	61.0 / 61.5
Coefficient of Drag (Cd)	0.28	<	<	0.28	0.30
Base Curb Weight, M/T (lbs)	2,773-2,899	2,890-2,915	–	–	2,855-2,983
Base Curb Weight, A/T (lbs)	2,818-2,943	2,923-2,959	2,818-2,943	2,861-2,934	2,908-3,036

INTERIOR DIMENSIONS	SEDAN		COUPE	GT
	SE	Sport		
Head Room, front/rear (in)	40.0 / 37.1	39.8 / 37.1	40.1 / 37.9	40.1 / 37.9
Leg Room, front/rear (in)	43.6 / 33.1	43.6 / 33.3	42.0 / 34.6	42.0 / 34.6
Shoulder Room, front/rear (in)	55.9 / 54.8	55.9 / 54.5	55.9 / 54.9	55.9 / 54.9
Hip Room, front/rear (in)	53.5 / 52.7	52.8 / 53.1	53.1 / 51.0	53.1 / 51.0
Passenger Volume (cu ft)	95.6	95.4	96.1	96.1
Cargo Volume (cu ft)	14.8	14.8	23.0	23.0
Cargo Volume, rear seats down (cu ft)	–	–	51.0	51.0
Total Interior Volume (cu ft)	110.4	110.2	119.1	119.1

EPA MILEAGE ESTIMATES	SEDAN			COUPE	GT
	SE	Sport	Limited		
M/T (city/highway/combined)	27 / 37 / 31	24 / 34 / 28	–	–	24 / 34 / 28
A/T (city/highway/combined)	28 / 38 / 32	24 / 35 / 28	27 / 37 / 31	24 / 34 / 28	24 / 33 / 27
Fuel Tank Capacity (gal)	12.8	13.2	12.8	13.2	13.2



## ELANTRA SEDAN **EXTERIOR COLORS**



## ELANTRA SEDAN SPORT **EXTERIOR COLORS**



## ELANTRA SEDAN **INTERIOR COLORS**



## ELANTRA SEDAN **WHEELS**



SE SEDAN  
15" ALUMINUM ALLOY WHEEL



SE PREFERRED  
16" ALUMINUM ALLOY WHEEL



LIMITED  
17" ALUMINUM ALLOY WHEEL



SPORT  
17" ALUMINUM ALLOY WHEEL

## 2014 ELANTRA LINEUP



### ELANTRA GT

#### KEY STANDARD EQUIPMENT

- 173 HP, 2.0L Gasoline Direct Injection 4-cylinder engine with Dual Continuously Variable Valve Timing
- 6-speed manual or automatic transmission with SHIFTRONIC® & Active ECO System
- Motor Driven Power Steering with Driver Selectable Steering Mode
- Remote keyless entry system with alarm
- Illuminated ignition
- Power windows, door locks & heated mirrors
- Tilt-and-telescopic steering wheel with audio, phone & cruise controls
- Heated front seats with driver's height adjustment
- Air conditioning with cooled glovebox
- AM/FM/SiriusXM/CD/MP3 audio system with 6 speakers
- Bluetooth® hands-free phone system with voice recognition
- iPod®/USB auxiliary input jacks
- Trip computer & outside temperature display
- Premium cloth interior & cloth insert door trim
- Sliding center armrest with storage compartment
- 60/40 split fold-flat rear seatback
- Front seatback pockets & front/rear door map pockets
- Rear-seat center armrest with cupholders
- Vehicle Stability Management System
- Electronic Stability & Traction Control Systems
- 4-wheel disc Anti-lock Braking System with Brake Assist & Electronic Brake-force Distribution
- Tire Pressure Monitoring System
- Driver's blind spot mirror
- 7-airbag safety system (includes driver knee airbag)
- Adjustable head restraints for all seating positions
- Illuminated front vanity mirrors & sunvisor extensions
- Front variable intermittent wipers
- Front fog lights & Daytime Running Lights
- Chrome front grille accents
- Rear window wiper & integrated spoiler
- 16" alloy wheels

#### STYLE PACKAGE

Elantra GT Standard Equipment Plus:

- + Sport-tuned suspension
- + Proximity key entry with push-button start
- + Leather seating surfaces
- + Leather-wrapped steering wheel & shift knob
- + Power driver seat with lumbar support
- + Aluminum sport pedals
- + Side mirrors with integrated turn signals
- + One-touch driver auto-up window
- + Under-floor storage

- + Blue Link® telematics system
- + LED taillights
- + 17" alloy wheels



#### TECH PACKAGE

Elantra GT Style Package Plus:

- + Panoramic tilt-and-slide sunroof
- + 7" touchscreen navigation system & rearview camera
- + Dual automatic temperature control
- + Automatic headlights



### ELANTRA COUPE

#### KEY STANDARD EQUIPMENT

- 173 HP, 2.0L Gasoline Direct Injection 4-cylinder engine with Dual Continuously Variable Valve Timing<sup>1</sup>
- 6-speed automatic transmission with SHIFTRONIC® & Active ECO System
- Sport-tuned suspension & steering
- Remote keyless entry system with alarm
- Illuminated ignition
- Power door locks & windows
- One-touch driver auto-up/down window
- Air conditioning
- Leather-wrapped steering wheel & shift knob
- Tilt-and-telescopic steering wheel audio, phone & cruise controls
- Heated front seats & cloth insert door trim
- AM/FM/SiriusXM/CD/MP3 audio system with 6 speakers & iPod®/USB auxiliary input jacks
- Bluetooth® hands-free phone system with voice recognition & audio streaming
- Trip computer
- Sliding center armrest
- Front-door map pockets
- Illuminated front vanity mirrors & sunvisor extensions
- 60/40 split fold-down rear seatback
- Rear-seat center armrest with cupholders
- Vehicle Stability Management System
- Electronic Stability & Traction Control Systems
- 4-wheel disc Anti-lock Braking System with Brake Assist & Electronic Brake-force Distribution
- Tire Pressure Monitoring System
- 6-airbag safety system with advanced dual front airbags & Occupant Classification System
- Adjustable head restraints for all seating positions
- Front fog lights & Daytime Running Lights
- Piano black front grille with chrome surround
- Power heated side mirrors with integrated turn signal
- Driver's blind spot mirror
- Integrated rear spoiler
- 17" alloy wheels

#### TECHNOLOGY PACKAGE

Elantra Coupe Standard Equipment Plus:

- + Proximity key entry with push-button start
- + Power tilt-and-slide glass sunroof
- + Leather seating surfaces
- + 7" touchscreen navigation system & rearview camera
- + 360-Watt premium audio with digital external amp
- + Blue Link® telematics system
- + Automatic headlights
- + Projector headlights with LED accents
- + LED taillights



<sup>1</sup> 166 HP on PZEV models

## AMERICA'S BEST WARRANTY

POWERTRAIN LIMITED WARRANTY

10 YEARS  
100,000 MILES

NEW VEHICLE LIMITED WARRANTY

5 YEARS  
60,000 MILES

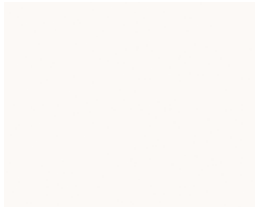
ANTI-PERFORATION WARRANTY

7 YEARS  
UNLIMITED MILES

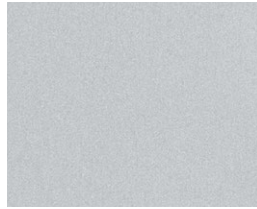
24-HOUR ROADSIDE ASSISTANCE

5 YEARS  
UNLIMITED MILES

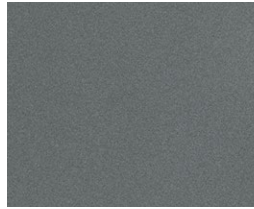
## ELANTRA GT & COUPE **EXTERIOR COLORS**



MONACO WHITE



SHIMMERING SILVER



TITANIUM GRAY METALLIC



WINDY SEA BLUE

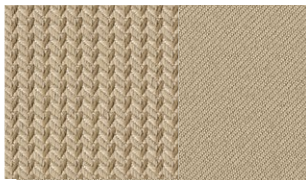


GERANIUM RED

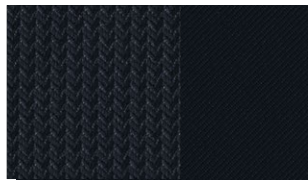


BLACK NOIR PEARL

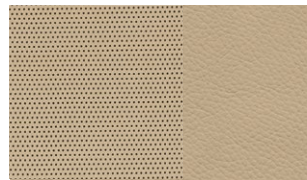
## ELANTRA GT **INTERIOR COLORS**



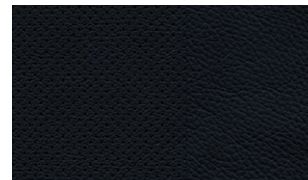
BEIGE CLOTH



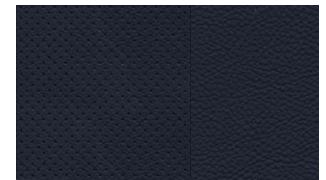
BLACK CLOTH



BEIGE LEATHER

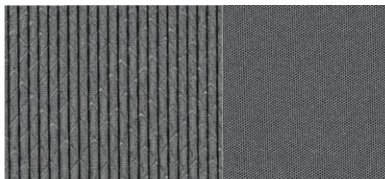


BLACK LEATHER

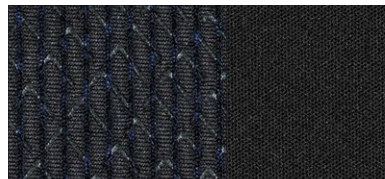


BLUE LEATHER

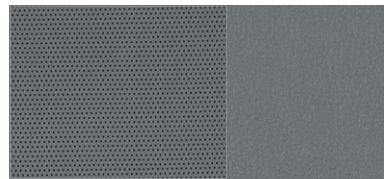
## ELANTRA COUPE **INTERIOR COLORS**



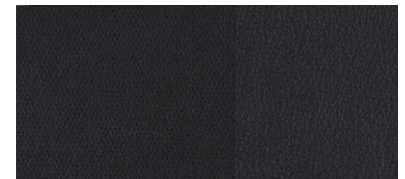
GRAY CLOTH



BLACK CLOTH



GRAY LEATHER



BLACK LEATHER

## ELANTRA GT **WHEELS**



**GT STANDARD**  
16" ALUMINUM ALLOY WHEEL



**GT STYLE/TECH**  
17" ALUMINUM ALLOY WHEEL



**COUPE**  
17" ALUMINUM ALLOY WHEEL

## ELANTRA COUPE **WHEELS**

See dealer for LIMITED WARRANTY details. Fuel economy estimated by EPA for comparison only. Mileage may vary. While the information contained in this brochure was correct at the time of printing, specifications and equipment can change. Feature comparisons based on competitor information available at the time of printing. No warranty or guarantee is being extended in this brochure, and Hyundai reserves the right to change product specifications and equipment at any time without incurring obligations. Some vehicles are shown with optional equipment. Specifications apply to U.S. vehicles only. Please contact your Hyundai dealer for current vehicle specifications. As part of Hyundai's commitment to a responsible environment, this brochure is printed using paper certified by the Forest Stewardship Council.™ FSC® certification helps ensure that the highest social and environmental standards are met in the making of the paper we use, contributing to conservation, responsible management, and community-level benefits for people near the forests.



 **HYUNDAI** | NEW THINKING.  
NEW POSSIBILITIES.



CONNECT WITH [HYUNDAIUSA.COM/SOCIAL](http://HYUNDAIUSA.COM/SOCIAL)

©2013 HYUNDAI NP020 82014