

2011 HYUNDAI **ACCENT**





GLS IN EBONY BLACK

CAN A SUBCOMPACT CAR DREAM OF BIGGER THINGS?

Some cars just dream bigger than others. Take Hyundai Accent. While it's typically cross-shopped with sub-compacts like Honda Fit and Toyota Yaris, here's the real story: Accent actually has more interior room than those cars' larger siblings, Civic and Corolla. Accent is big on safety, too: Its long list of standard safety features includes a supplemental restraint system that keeps six airbags on guard to help protect you.

Power? It's got more horsepower than Toyota Yaris. Yet for all of its oversized accomplishments, Accent still sips fuel like a subcompact, with an EPA estimated rating of up to 36 miles per gallon (which bests the Honda Fit).¹ And it's backed by America's Best Warranty, with a 10-year/100,000-mile limited powertrain warranty and five years of 24-hour roadside assistance.²

Of course, there is one thing you'll find out about the Hyundai Accent that's not very big at all: Its sticker price.

AMERICA'S **BEST** WARRANTY

POWERTRAIN
LIMITED WARRANTY

10 YEARS
100,000 MILES

NEW VEHICLE
LIMITED WARRANTY

5 YEARS
60,000 MILES

ANTI-PERFORATION
WARRANTY

7 YEARS
UNLIMITED MILES

24-HOUR
ROADSIDE ASSISTANCE

5 YEARS
UNLIMITED MILES

¹ EPA estimates for comparison. Your actual mileage will vary with options, driving conditions, driving habits and vehicle's condition.

² See dealer for LIMITED WARRANTY details.



SE INTERIOR IN BLACK CLOTH

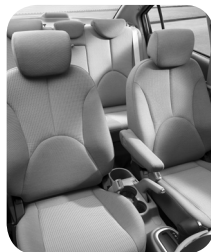
SURPRISE PACKAGE.

Accent will have everyone in your inner circle wondering how you got so much car for so little money. Look around, and you see value. Under the hood, Accent's 1.6-liter four-cylinder engine delivers up to 36 miles per gallon. With 110 horsepower and 106 pound-feet of torque, it's ideal for both stop-and-go city driving as well as worry-free on-ramp entry. It's also thoughtfully green, rated as a certified Ultra-Low-Emissions Vehicle (ULEV).¹ Considerable thought was also devoted to a generous list of features. Air conditioning and a 60/40 split fold-down rear seatback come standard on the GLS 4-Door, as do eight cupholders, a handy maplight with sunglass holder, sun visors with illuminated vanity mirrors and a 6-way adjustable driver's seat with armrests. Whew.



BUILT TO LAST

Accent's Alpha-series engine is the product of our multi-million dollar investment in powertrain research. Each engine is painstakingly assembled by hand to exacting standards. So exacting, in fact, that as a final quality check, each engine is run without fluids. Unless the machining and assembly are precisely to spec, the engine doesn't leave our factory.



ROOM, RECLASSIFIED

Accent has so much space inside, it's classified as a compact car by the U.S. Government. Want storage? No less than 10 easy-to-reach compartments are placed throughout the GLS interior. Utility is a beautiful thing.



TECHNO-SAVVY

Accent keeps you plugged in anywhere you go with an available Bluetooth®-enabled hands-free phone system.³ The cockpit also features a 6-speaker, 172-watt audio system that includes AM/FM/XM® Satellite Radio, an in-dash CD/MP3 player and convenient iPod®/USB and MP3 auxiliary input jacks.⁴



ACCENT ON PERFORMANCE

Opt for the SE 3-door and grab hold of the leather-wrapped B&M Racing® Sport Shifter.² An upgraded sport suspension uses higher-spec dampers, a beefier stabilizer bar and stiffer springs to give Accent SE the tools for big fun behind the wheel.



ECO-FRIENDLY ENGINEERING

Engine advancements like Continuously Variable Valve Timing (CVT) combine with transmission refinements like electronic overdrive to deliver eco-friendly driving at every turn. Accent's Eco/Shift indicators offer real-time feedback that helps you maximize fuel efficiency by driving in the most economical way possible.

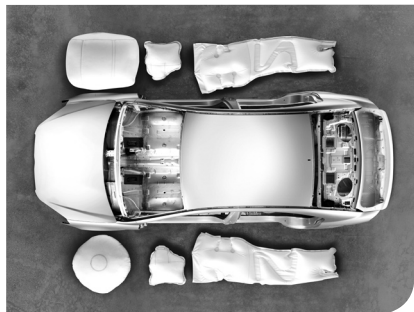
¹PZEV available in some states. Horsepower and torque on PZEV and ULEV models may vary. ²B&M Racing® is a registered trademark of B&M Racing & Performance Inc. The Sport Shifter is available with 5-speed manual transmission only. ³The Bluetooth® word mark and logos are registered trademarks owned by Bluetooth SIG, Inc., and any use of such marks by Hyundai is under license. Other trademarks are those of their respective owners. ⁴XM® Satellite Radio requires XM subscription, sold separately after a complimentary introductory period. All fees and programming subject to change. See your dealer for details. XM service only available in the 48 contiguous United States. The XM name is a registered trademark of XM Satellite Radio Inc. All other trademarks are property of their respective owners. iPod® is a registered trademark of Apple Inc.



SE IN BOSTON RED

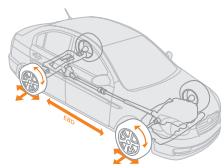
THE ACCENT IS ON SAFETY.

At Hyundai, we believe that of all the things an automobile is designed to do, it must make the protection of its occupants an unwavering priority. It starts with a body built to protect. Accent surrounds you with a rigid shell that incorporates high-tensile steel, front and rear crumple zones, body-side reinforcements and hood-buckling creases to protect you in an impact from any direction. Within that protective body, Hyundai engineers placed six airbags, as well as three-point seatbelts for every seat and front seatbelt pretensioners. Slip behind the wheel, and you'll find all of this engineering put to good use: Some of the same technologies that amplify the car's safety also satisfy a driver's sporting desires.



SIX AIRBAGS

Accent comes standard with a six-airbag system that includes dual advanced front airbags, front seat-mounted side-impact airbags, plus roof-mounted side-curtain airbags.¹



ELECTRONIC BRAKE-FORCE DISTRIBUTION (EBD)

EBD varies the braking force applied to each wheel based on road conditions, speed and load, among other factors. By applying the maximum brake pressure needed, braking distances are minimized.



FRONT SEATBELT PRETENSIONER/LOAD LIMITER

Seatbelt pretensioners automatically "cinch up" to reduce slack and optimally position occupants in case of airbag deployment. Force limiters are designed to "give" a little, which reduces peak belt loads to the torso in certain high-impact frontal collisions.



STRUCTURAL INTEGRITY

Accent's unibody is 39% more rigid than its predecessor. That not only makes it safer, but also produces more precise handling and a smoother ride. Inside the passenger cabin, triple door seals help reduce noise and vibration even further.



ANTI-LOCK BRAKING

In emergency braking situations, the expertly engineered modulation of an available Anti-lock Braking System (ABS) helps preserve steering control. A 4-sensor, 4-channel system applies braking force independently to each wheel for optimal stopping power.

¹The supplemental restraint system (SRS) is designed to work with the three-point seatbelt system. The SRS deploys in certain frontal and/or side-impact conditions where significant injury is likely. The SRS is not a substitute for seatbelts, which should be worn at all times. Children under the age of 13 should be restrained securely in the rear seat. NEVER place a rear-facing child seat in the front seat of a vehicle that has a passenger-side airbag.

2011 ACCENT LINE UP

GL 3-DOOR



Key Standard Equipment

- 1.6-liter, DOHC 4-cylinder engine with Continuously Variable Valve Timing (CVT)
- 5-speed high-efficiency manual transmission
- Tachometer and EcoShift Indicator
- Sport-tuned power assisted rack-and-pinion steering
- 14-inch steel wheels with full wheel covers
- P175/70R14 tires
- 6 airbags: Advanced dual front airbags with Occupant Classification System (OCS), front seat-mounted side-impact airbags and roof-mounted side-curtain airbags
- Tire Pressure Monitoring System (TPMS)
- Front/rear adjustable head restraints
- Audio Preparation Package with 4 speakers
- Air conditioning preparation package
- Variable intermittent windshield wipers
- Dual-adjustable side mirrors
- Sport cloth seats
- 6-way adjustable driver seat with armrest
- Dual front cupholders and map pockets
- 60/40 split fold-down rear seatback
- Rear coat hook
- Rear cargo cover
- Bodycolor bumpers and front grille
- Rear spoiler
- Rear window defroster
- Ultra Low Emissions Vehicle (ULEV) rating from California Air Resources Board
- City/Highway 28/34 MPG (manual)

Optional GL Equipment

- Air conditioning

GS 3-DOOR



GL Equipment Plus

- 4-speed automatic transmission with Eco Indicator
- Available 5-speed manual transmission with EcoShift indicator
- Air conditioning
- AM/FM/XM®/CD/MP3 audio system with 6 speakers
- iPod®/USB and MP3 auxiliary input jacks
- Tilt steering wheel
- Maplights with sunglass holder
- Bodycolor outside mirrors and door handles
- Rear window wiper/washer
- City/Highway 27/36 MPG (automatic)

GS Premium Package

- Anti-lock Braking System (ABS) with Electronic Brake-force Distribution (EBD)
- Power windows with driver's auto-down
- Power door locks
- Dual power outside mirrors
- Remote keyless entry system with alarm and panic alert
- Dual illuminated vanity mirrors

SE 3-DOOR



GS Premium Package Plus

- Sport-tuned suspension
- 16-inch alloy wheels and P205/45R16 tires
- B&M Racing® Sport Shifter (M/T)
- Leather-wrapped steering wheel and shift knob
- Steering-wheel-mounted audio controls
- Cruise control
- Metallic interior accents
- Passenger-side front seatback pocket
- Fog lights
- Tinted glass with windshield shade band

GLS 4-DOOR



Key Standard Equipment

- 1.6-liter, DOHC 4-cylinder engine with Continuously Variable Valve Timing (CVT)
- 5-speed manual transmission with EcoShift Indicator
- Available 4-speed automatic transmission with Eco indicator
- Power-assisted rack-and-pinion steering
- 14-inch steel wheels with full wheel covers
- P185/65R14 tires
- 6 airbags: Advanced dual front airbags with Occupant Classification System (OCS), front seat-mounted side-impact airbags and roof-mounted side-curtain airbags
- Front/rear adjustable head restraints
- Tire Pressure Monitoring System (TPMS)
- Air conditioning
- AM/FM/XM®/CD/MP3 audio system with 6 speakers
- iPod®/USB and MP3 auxiliary input jacks
- Variable intermittent windshield wipers
- 6-way adjustable driver seat with armrest
- Maplights with sunglass holder
- Dual illuminated vanity mirrors
- Passenger-side front seatback pocket
- 60/40 split fold-down rear seatback
- Rear-seat center armrest with cupholders
- Bodycolor mirrors, door handles & side moldings
- Rear window defroster
- Tinted glass with windshield shade band

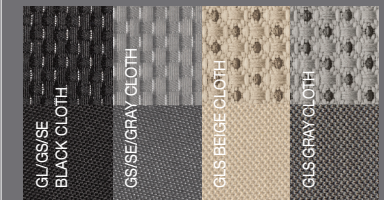
GLS Premium Package

- Anti-lock Braking System (ABS) with Electronic Brake-force Distribution (EBD)
- Power windows with driver's auto-down
- Power door locks
- Remote keyless entry system with alarm & panic alert
- Tilt steering wheel
- Steering-wheel-mounted audio controls
- Cruise control

EXTERIOR_COLOR CHOICES

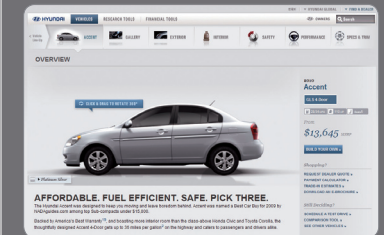


INTERIOR_COLOR CHOICES



WEBSITE_HYUNDAI.COM

Be sure to visit our website, where you can build your Accent, locate a Hyundai dealer near you and schedule a test drive.



NP020-Q2011

HYUNDAI.COM

©2010 HYUNDAI

¹ Denotes limited availability. ² Denotes late availability. Fuel economy estimated by EPA for comparison. While the information contained in this brochure was correct at the time of printing, specifications and equipment can change. Feature comparisons based on competitor information available at the time of printing. No warranty or guarantee is being extended in this brochure, and Hyundai reserves the right to change product specifications and equipment at any time without incurring obligations. Some vehicles are shown with optional equipment. Specifications apply to U.S. vehicles only. Please contact your Hyundai dealer for current vehicle specifications. As part of Hyundai's commitment to a sustainable environment, this brochure is printed using paper certified by the Forest Stewardship Council. FSC certification helps ensure that the highest social and environmental standards are met in the making of the paper we use, contributing to conservation, responsible management, and community level benefits for people near the forests.

