

The Honda Stream 2004



Few things in life are as seductive and exciting as a new car. Even when it's standing still, it creates a sense of anticipation, energy and possibility. And an overwhelming desire to get in and drive it. But it's much more than just an elegant piece of engineering. A new car is ambitions, aspirations and dreams made solid. Not just yours, but ours, too. From dreams to reality is our purpose and our promise, inspiring every car we design and build. We invite you to discover the Stream - and experience the power of dreams for yourself.

CONTENTS

Concept	3
Performance	7
Interior Design	9
Interior Space	11
Attention to Detail	15
Safety	17
Innovation	19
Environment	21
Specification	23
Options	25
Finance/Aftercare	27
Model Line Up/Colour Options	29



Stream seduction

At first, the attraction's purely visual. Your eye travels irresistibly along the Stream's smooth bodylines, taking in the deep, sculpted bumpers, tapering glass and the long, raked windscreen flowing seamlessly into the roofline. Clearly, this is not your average MPV. But it's when you take the Stream on the road that the seduction

is completed. Stream combines sports-coupe performance and handling with estate-car space and flexibility. It's the definitive sports activity vehicle that adapts effortlessly to your changing demands - a serious driver's car with a new and unique dimension.







pure performance



2.0 i-VTEC engine



An easy right-hander, slightly uphill, clear road ahead. No need to brake, but Stream's all-round discs with ABS and EBD are reassuring anyway. Your hand lightly grips the facia-mounted gearshift. Flick down, and feel the 2.0-litre i-VTEC engine push you back in your seat as the revs soar.

With a low centre of gravity, compared to other cars in its class, Stream holds the road as though you're on rails. Nail the apex, then the engine kicks again as you power through the exit, hungry for the next one.

Relish every second on the road with Stream's superlative engine and exhilarating handling.

The power to excite. The power to perform.

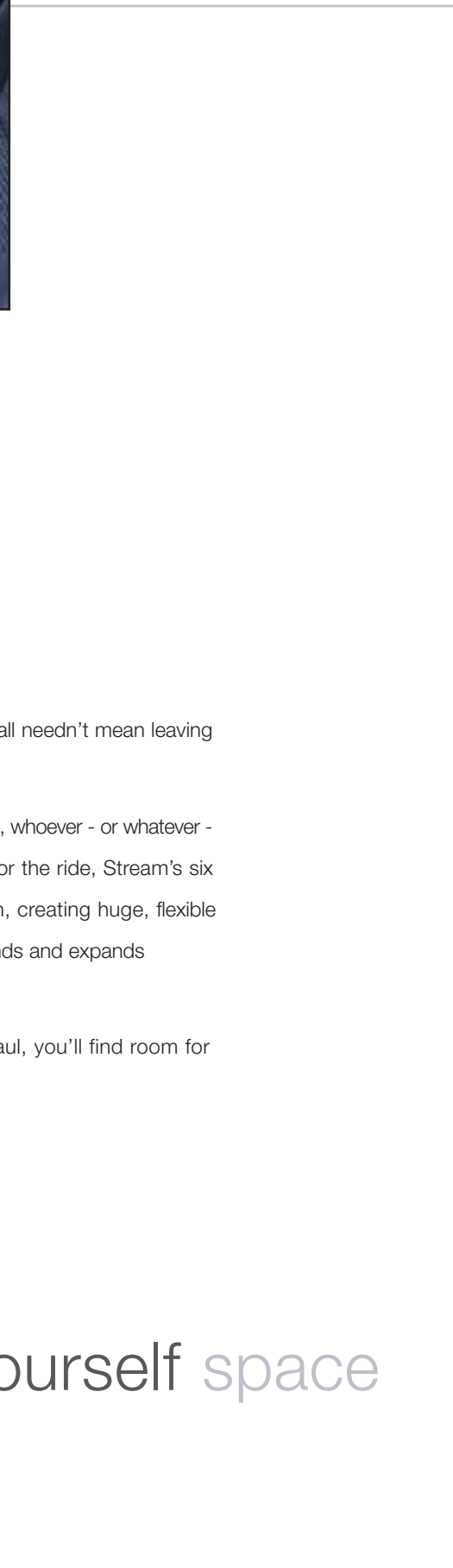
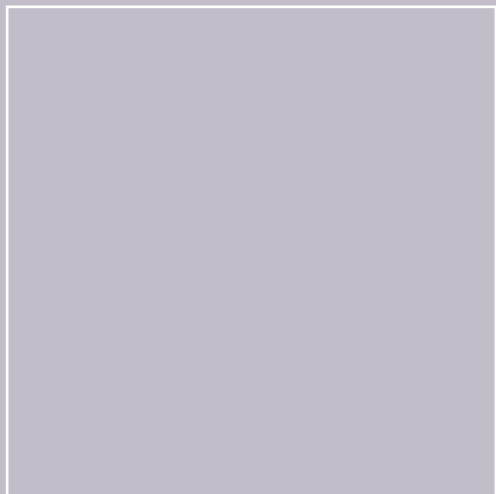


room with a view

Why do you choose Stream? Because you want to carry more people than a conventional car allows. But how many passengers are you likely to get if they know they're going to be packed in elbow-to-elbow and knee-to-knee? We've taken a different view of the MPV, and gone for quality, not just quantity. Stream sits six adults in complete comfort, with a centre console

between the second-row seats creating extra space and flexibility. And it's not just the number of seats that makes Stream so comfortable. Air conditioning is standard, and the seats themselves offer superb comfort and support, with specially-selected fabrics completing the cabin's refined, contemporary look. Enjoy the ride. Expect plenty of company.





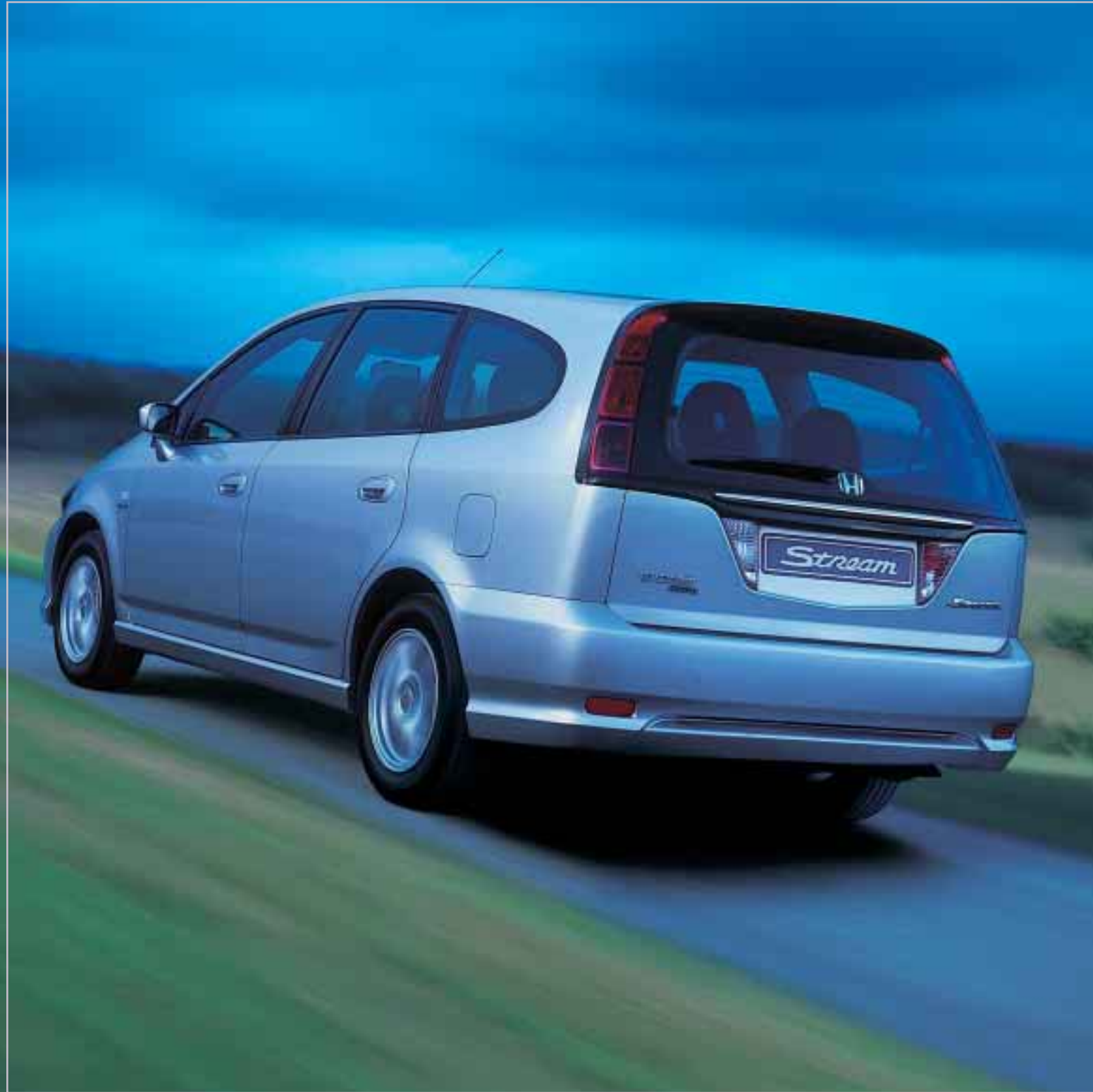
Getting away from it all needn't mean leaving everything behind.

Wherever you're going, whoever - or whatever - you're taking along for the ride, Stream's six seats fold and flatten, creating huge, flexible load space that extends and expands to accommodate.

Short hop or long haul, you'll find room for everything.

give yourself space

a driver's delight



a passion for detail

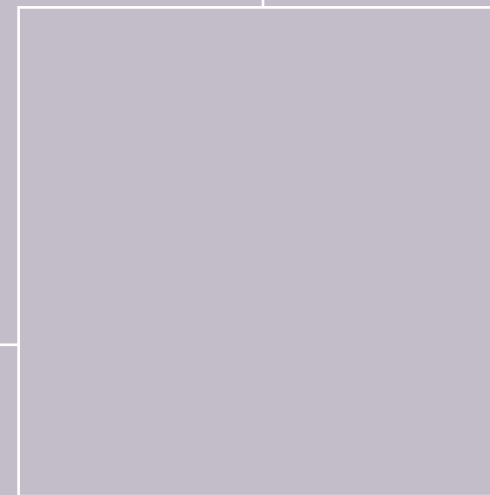
Come closer. Now just look. Take your time.
We did.

Our attention to detail borders on obsession.
Ninety-nine percent right won't do - for that
one percent, we'll go back and start again.

It's painstaking work, but, like you, we won't
settle for anything less than perfection.

Savour the immaculate fit and finish of every
panel, the solid refinement of the interior, and
the reassuring sense of everything looking,
working and feeling exactly as it should.

Share our passion.

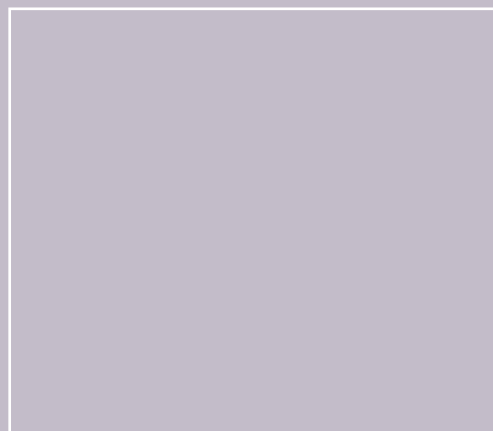




Every aspect of Stream's design has safety, as well as style, as its inspiration. The intricate projector-style headlamps greatly improve visibility. The long, high-mounted brake-lights framing the rear window are easier for other drivers to see - and give them more time to react. Under the smooth bodyshell, Stream's rigid safety cage incorporates side-impact protection beams, twin front airbags and side airbags as standard. Stream. Design that defies convention, safety without compromise - everything that Honda stands for.

good looks with
good sense

Impossible? Don't know the meaning of the word.



What if we'd just called ourselves a car manufacturer? Think of all the amazing things we - and you - might have missed out on: our award-winning scooters, superlative motorcycles. Not forgetting our world-renowned powerboat engines. And all those race triumphs including 557 Motorcycle Grand Prix titles and 118 TT wins, to name just a couple.

It's this desire to explore different branches of engineering, to make things happen through innovation and imagination, that makes us who we are. It can be a question of finding a new take on existing technology - like the Civic's dash-mounted gearshift, or redesigning the suspension to open up extra cabin space. Then again, we might choose simply to refine something to make it more environmentally friendly. Like our 4-stroke outboards, which already exceed the world's toughest emissions standards. They're clean, fuel efficient and 95% recyclable.

And sometimes, we come up with something completely new. When 500cc 2-stroke engines were replaced by 990cc 4-strokes in motorcycle Grand Prix racing, the easy option would have been to modify an engine we were already making. But we saw a chance for some truly radical thinking - and developed a totally unique

5-cylinder engine. A bold move that paid off when our RC211V bike won 15 out of 16 GP races in 2003, earning us yet another World title. We also innovated with our all-terrain vehicles (ATV), creating a whole new market in 1970. Thirty years later, we're still the world leader and in fact, half the ATV's on the planet have Honda on the tank.

But sometimes, we have to learn an entirely new science, and when we do, we often end up as world leaders. Take our revolutionary robot, ASIMO, which stands for Advanced Step in Innovative Mobility. Its remarkable walking technology allows it to negotiate stairs, rough surfaces and corners, while avoiding any obstacles in its path, making it ideal for work in hazardous environments. ASIMO can interpret the postures and gestures of humans, and can even recognise their faces and address them by name. We're in the business of keeping the world moving. Our work with ASIMO has given us unique insights into how human limbs, joints and senses operate. Which takes us beyond transport into personal mobility for everyone.

Remember, you saw it here first.



Is this what it means to be a world leader?



We're a global corporation that builds cars. Why does that make us the bad guys? We might be dreamers, but we're also realists: we can't un-invent the internal combustion engine. So instead of trying to turn back the clock, since the 70s we've been working on winding it forward.

At Honda we build cars with the future in mind. By 2010, we aim to send no waste to landfill from our factory in Swindon. We're already well on the way. Cutting waste by 50% in just three years helped. It also made it easier for us to achieve the tough ISO14001 and EMAS 2 environmental management standards.

But what about the cars themselves? What good are policies to reduce energy consumption, waste and emissions if you're still churning out gas-guzzlers?

As well as all our engines, we even make small parts like con-rod bolts and brackets from aluminium. Why? Because it's one-third the weight of steel. A lighter car needs less energy to get moving than a heavy one, so fuel economy's improved. We've also made our cars virtually PVC and lead-free, and upped our use of recycled and recyclable materials in areas like dashboards and bumpers. But we're engine people at heart, so we've been busy here, too.

The Insight is the most fuel-efficient production sports coupé in existence. Big claim. But backed up twice over, initially in 2002 with first place in the Sports/Coupé category of the Environmental Transport Association's Car Buyer's Guide, then in 2003 winning the International Engine of the Year Award for Best Sub 1 litre engine. Love the

idea but need more space? Good news: the same Integrated Motor Assist (IMA) technology is now available in a 4 door Civic Executive. This again is an award winner with Best Fuel Economy and Best 1-1.4 litre Engine at the 2003 International Engine of the Year Awards. Additionally, it's won the BP Green Fleet award for vehicle innovation.

And while others wonder whether they should be researching a zero-emission alternative, we've



got on with actually building it. Our FCX fuel-cell vehicles are already on the streets of Tokyo and LA. And heading this way.

Which just leaves our bikes and boats. We are reducing our motorcycles' emissions and fuel consumption by 30%, and have now stopped building any road-going two-strokes at all.

If you're looking for an outboard, it's already four-stroke only. And when new emissions regulations come into force in 2006, you can relax knowing your engine already exceeds them.

Leadership is knowing where you're going and persuading others to come with you.

Do you follow?

specification

		2.0 i-VTEC SE Sport
Engines		
Engine type		2.0 DOHC i-VTEC
Displacement (cc)		1998
Max power (PS @ rpm)		156 @ 6,500
Max torque (Nm @ rpm)		192 @ 4,000
Transmission		
5-speed manual		•
5-speed sequential shift (auto)		o
Performance (man/SS)		
Maximum speed (mph)		127/124
Acceleration 0-62 mph (sec's)		9.4/11.2
Fuel Consumption - (man/SS)†		
Urban	mpg	25.0/22.6
	l/100km	11.3/12.5
Extra urban	mpg	40.4/42.2
	l/100km	7.0/6.7
Combined	mpg	32.8/31.7
	l/100km	8.6/8.9
Potential range per tank (miles)††		397/384
CO ₂ emission (g/km)*		203/209
Weights and towing data (man/SS)**		
Kerb weight (kg)		1418/1443
Max towing weight with brakes (kg)		1400/1100
Max towing weight without brakes (kg)		530
Fuel tank capacity (litres)		55
Boot capacity (litres)		
Third row seats down		435
Third row seats up		158
Wheels and tyres		
Wheel size		15x16JJ
Tyres		195/65R15
15" alloy wheels		•
Full size spare wheel		•
Instruments and controls		
Digital clock (built into audio system)		•
Digital odometer (A/B trip)		•
Headlamp on reminder buzzer		•
Internally adjustable headlights		•
Outside temperature gauge (built into odometer)		•
Low fuel warning light		•
Remote fuel filler release		•
Tachometer		•
Safety		
6x3 point seat belts		•
Dual SRS airbags		•
Front side airbags		•
Electronic Anti-Lock Braking System (ABS) with Electronic Brakeforce Distribution (EBD)		•
Emergency Brake Assist		•
Front seat belt pre-tensioners		•
Head restraints		•
ISOFix childseat restraint system (second row)		•
High level rear brake light		•
Advanced toe control link front suspension		•
Reactive link double wishbone rear suspension		•
Ventilated front disc brakes		•
Rear disc brakes		•
Security		
Alarm system (perimeter)		•
ECU engine immobiliser (rolling code)		•
Honda Super Locks (Deadlocks)		•
Locking wheel nuts		•
Remote keyless entry with Hazard Answerback (with 2 transmitters)		•
Visible Vehicle Identification Number (VIN)		•
Tonneau cover		•

		2.0 i-VTEC SE Sport
Exterior		
Body coloured bumpers		•
Body coloured door handles		•
Body coloured door mirrors		•
Tailgate release handle		•
Front fog lights		•
Heat absorbing tinted windows		•
Roof mounted aerial		•
Comfort and convenience		
Intermittent variable wiper		•
Reverse linked rear windscreen wiper		•
Ignition illumination		•
Automatic air conditioning		•
12v power outlet		•
Leather steering wheel		•
Leather gear knob		•
Central door locking		•
Driver vanity mirror with lid		•
Passenger vanity mirror with lid		•
Driver's foot rest		•
Front cupholders and rear cupholders in console		•
Front and rear bottle holders		•
Front map lights		•
Rear interior light (second row seats)		•
Rear interior light (third row seats)		•
Boot lights		•
Front passenger seat undertray		•
Lockable glovebox		•
Luggage tie down hooks		•
Driver seatback pockets		•
Passenger seatback pockets		•
Pollen filter		•
Power door mirrors		•
Heated door mirrors		•
Power front windows (driver's auto up/down)		•
Power rear windows		•
Power assisted steering		•
Second row centre console		•
Tilt adjustable steering wheel		•
Seating		
60:40 split folding second row seats		•
Reclining/sliding second row seats		•
Flat folding third row seats		•
Driver's seat armrest		•
Height adjustable driver's seat		•
Second row seat armrest		•
In car entertainment***		
High-security stereo cassette tuner with RDS		o
High-security stereo CD tuner with RDS		•
Front door speakers		•
Front tweeters		o
Rear speakers		•

Key • Standard o Option

† **Fuel consumption.** These are the results of the fuel consumption test conducted by the Department of Transport. This test is designed to give a realistic indication of on-road fuel consumption.

†† Calculated using combined cycle. Results will vary according to driving conditions.

* The Stream meets the Euro IV(Euro 2005) emissions standards.

** **Maximum towing weights** are based on the ability of the car, with two occupants of 75kg each, to restart on a 12% gradient at sea level. At altitudes in excess of 1500 metres, engine output may drop with a reduction in towing capability. Extra weight, such as additional passengers or luggage, should also be deducted from the maximum towing weight.

*** For a full listing of all accessories for the Stream, please refer to the price list.



accessories

Stamp your unique style and personality on your Stream with our exclusive range of Genuine Honda accessories.

There's everything you need to add those essential design details inside and out, upgrade your in-car entertainment, or extend the Stream's load-carrying capabilities. All designed and manufactured to the same stringent standards as the Stream itself - and all backed by the same 3 year/90,000-mile warranty.

For a full list of Genuine Honda accessories please refer to the price list or your local Honda dealer.



Child seat 'Babysafe'
For children from 0-15 months old (Universal).



Child seat 'Duo'
For children from 8 months to 4 years (9 to 18 kg) (ISOFix).



Booster and back rest
For children from 3 years to 12 years (15 to 36 kg).



Cooling Box Fridge
Cooler box plugs into cigarette lighter socket. Chills to 4°C fridge temperature. Mains adapter also available.



DVD Satellite Navigation CD tuner
Find your way around easily with the whole of Europe on one disc.



Rear Spoiler
Sporting looks with a rear brake light helps reduce rear screen dirt accumulation.



15" 6 Spoke Alloy Wheel



15" 5 Split Spoke Alloy Wheel



Model shown is accessorised 2.0 SE Sport with: 15" 6 spoke alloy wheels, tailgate spoiler, body side protectors, bumper corner protectors.

Why do we find it hard to talk about money?

You've studied it. Talked about it. Dreamed about it. Now you have to pay for it. Just doesn't feel like part of the fun, somehow. So we thought, there should be a better way to do this. Not a quick-fix, easy-terms, one-size-fits-all deal, either. Finance that sounds too good to be true usually is. We were thinking 'simple', 'flexible' and 'convenient'. And that's what you get, right from making the deposit.

So where do we start?

With the deposit. Your current car or cash are both fine. You don't have either? No problem: we can work out a zero-deposit package, too.

Done your sums?

The most important part of any finance is the monthly payments. Only you know how much you can really afford. So tell us. That way, we can work out monthly payments to fit in with your budget. Our finance packages are flexible enough to work round just about anything. After that, it's up to you.

We give you choices right through the process. Including at the end of the agreement. You want to keep the car?

Simple: make the final payment and it's all yours. Or, you can give it back.

As long as it's in good condition and within the agreed mileage, you can walk away with nothing more to pay*.

And if you're ready for a new Honda, we'll arrange a part-exchange and a new finance package. Easy, really.

Making our finance more straightforward meant leaving

out a few things. The long, complex forms. The dense technical jargon. The wait to see if you've got the go-ahead. We didn't think you'd miss them. We don't. All of which means you get your new Honda quicker.

Of course, none of this is any substitute for talking it over with your local Honda Dealer.

So now you know what to expect from a visit to us.

When can we expect a visit from you?

Stream 2.0i SE Sport

OTR Price	£17,013.00
Deposit	£3,332.00
Advance	£13,681.00
36 x	£315.00
1x (GMFV)	£5,693.00
Total Amount Payable	£20,410.00
APR	11.7%
Annual Mileage	10,000
Excess Mileage	9p per mile

Total cash price includes £475 delivery & number plates, £38 first registration fee and VED in line with Government Legislation. The Guaranteed Minimum Future Value (*Honda Aspirations only) will be used to pay the Final Payment if the car is returned after the last monthly payment provided the car has been serviced in accordance with the Honda service book, is in good condition and the maximum permitted mileage has not been exceeded. A £95 Credit Acceptance Fee is included in the monthly payments and a £45 Option to Purchase Fee is payable with the final payment. Finance is only available to persons aged 18 or over subject to status. Indemnities may be required in certain circumstances. Full written quotations available on request. All figures are correct at time of publication but may be subject to change. Models subject to availability.

Want to predict the future?

The Stream, like all Hondas, is made to our exacting standards. But we take nothing for granted. So the Stream is covered by a 3 year manufacturer's warranty*. You can extend this period of cover with a Hondacare Guarantee and give yourself peace of mind for up to a further 4 years. Hondacare Guarantee is unique and only available from authorised Honda dealerships.

Just choose the period of cover you want - from 4 months to 4 years. Then sit back and relax, knowing that help is only a telephone call away. Unexpected repair bills will be settled immediately.

*Subject to the Warranty terms and conditions listed on pages 15 and 16 of your service book.

Further benefits include:

- Repairs carried out by Honda trained technicians
- Guarantees the use of only Genuine Honda parts
- Fully comprehensive AA cover

Just ask your authorised Honda Dealership for more details.

Like beneficial Insurance rates?

The Hondacare insurance scheme has been specially designed so that Honda owners receive beneficial insurance cover at competitive rates. To obtain details of all the benefits included and to receive a quotation, please contact your authorised Honda Dealer or call 0845 200 8000.

Is help at hand when it really matters?

With Honda it is. Because if you're unlucky enough to have an accident, we have a free Hondacare Accident Helpline that will sort all the details for you and make it a priority to get your car back on the road. In the event of an accident please telephone 0800 521 728.

SE SPORT

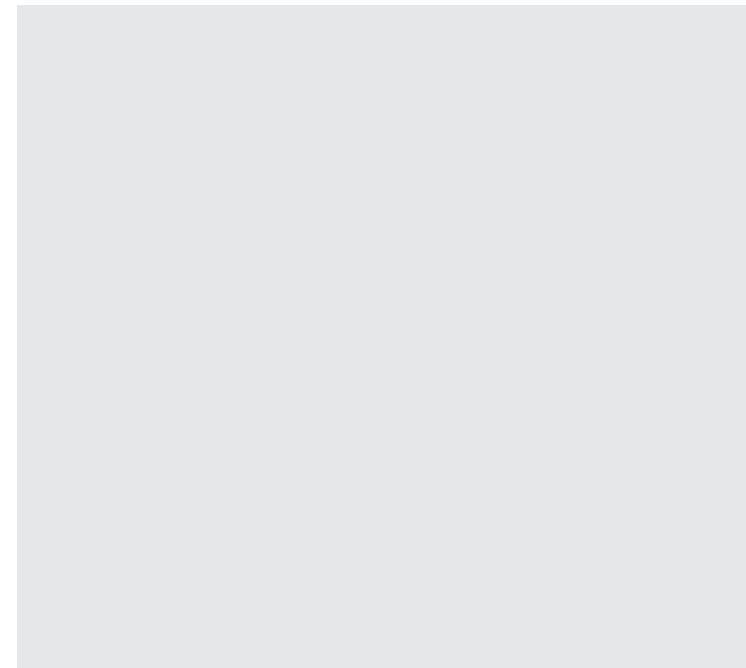


For colour options please see colour palette at back of brochure.



Colour options for your
Stream

Eternal Blue Pearl



Satin Silver Metallic



Radiant Ruby Pearl



Cosmic Grey Pearl



Milano Red

Colour options for your
Stream



Eternal Blue Pearl

Stream Colour Option



Radiant Ruby Pearl

Stream Colour Option



Milano Red

Stream Colour Option

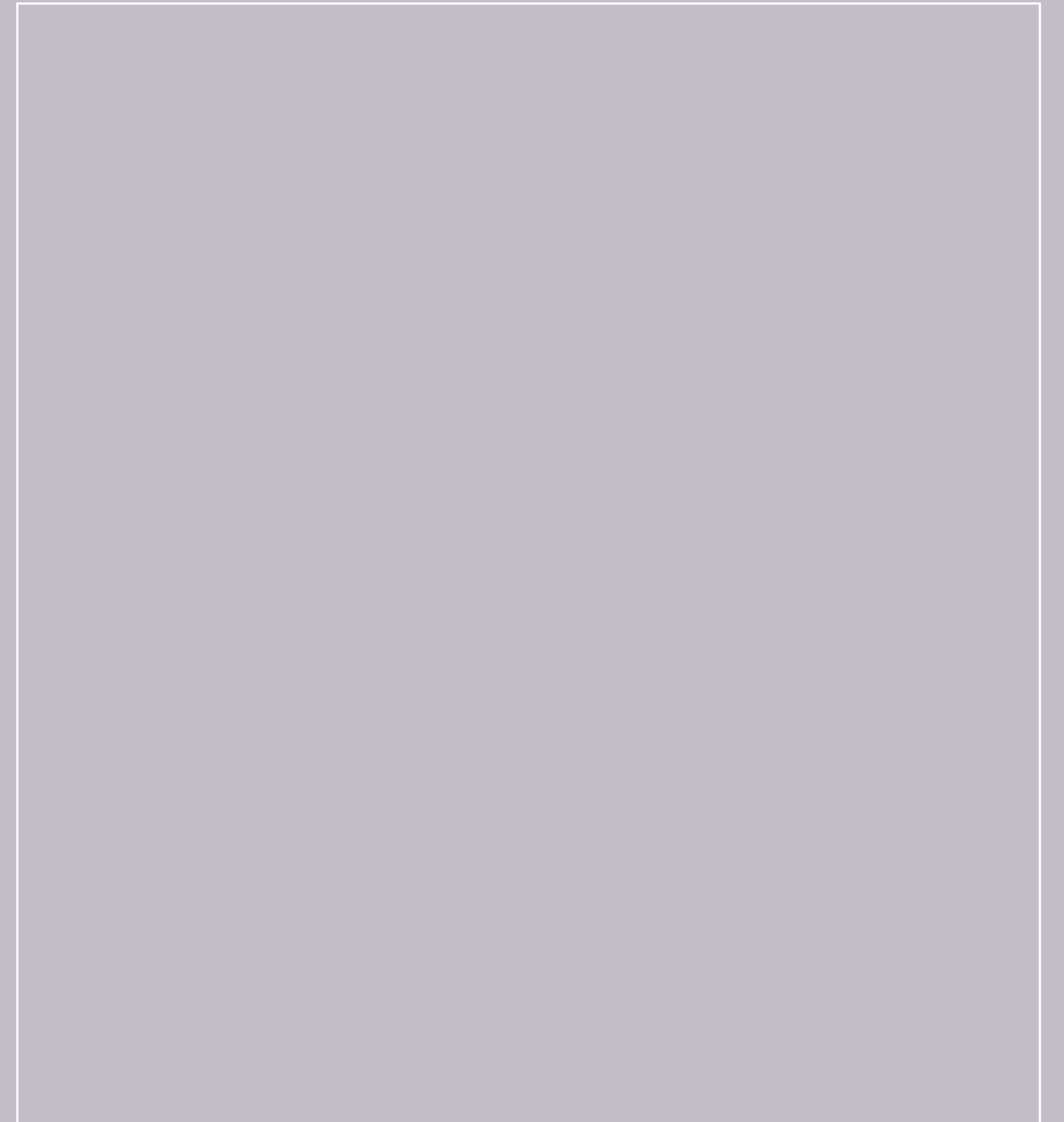


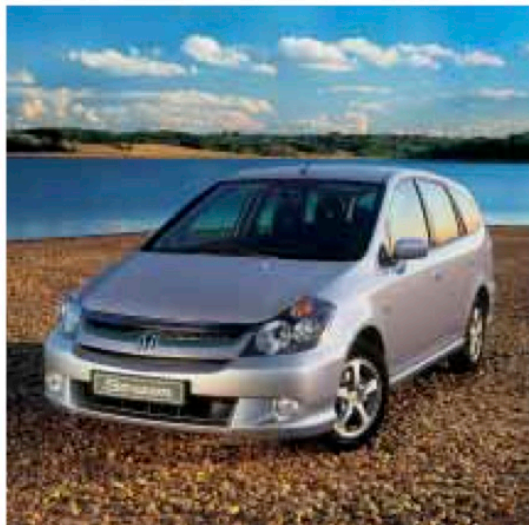
Satin Silver Metallic

Stream Colour Option



Cosmic Grey Pearl





These specification details do not apply to any particular product which is supplied or offered for sale. The manufacturers reserve the right to vary their specifications, including colours, with or without notice and at such times in such manner as they think fit. Major as well as minor changes may be involved. Every effort, however, is made to ensure the accuracy of the particulars contained in this brochure. This publication shall not constitute in any circumstances whatsoever an offer by the Company to any person. All sales are made by the Distributor or Dealer concerned subject to and with the benefit of the standard Conditions of Sale and Warranty given by the Distributor or Dealer, copies of which may be obtained from him on request. This publicity material applies to the UK only Trade Descriptions Act (1968). Whilst efforts are made to ensure specification accuracy, brochures are prepared and printed several months in advance of distribution and consequently cannot always immediately reflect either changes in specification or in some isolated cases the provision of a particular feature. Customers are always advised to discuss specification details with the supplying Dealer especially if your model selection is dependent upon one of the features advertised.

Honda (UK) - Cars

470 London Road, Slough, Berkshire, SL3 8QY
Honda Contact Centre - Telephone: 0845 200 8000
www.honda.co.uk



Printed on Recycled Paper