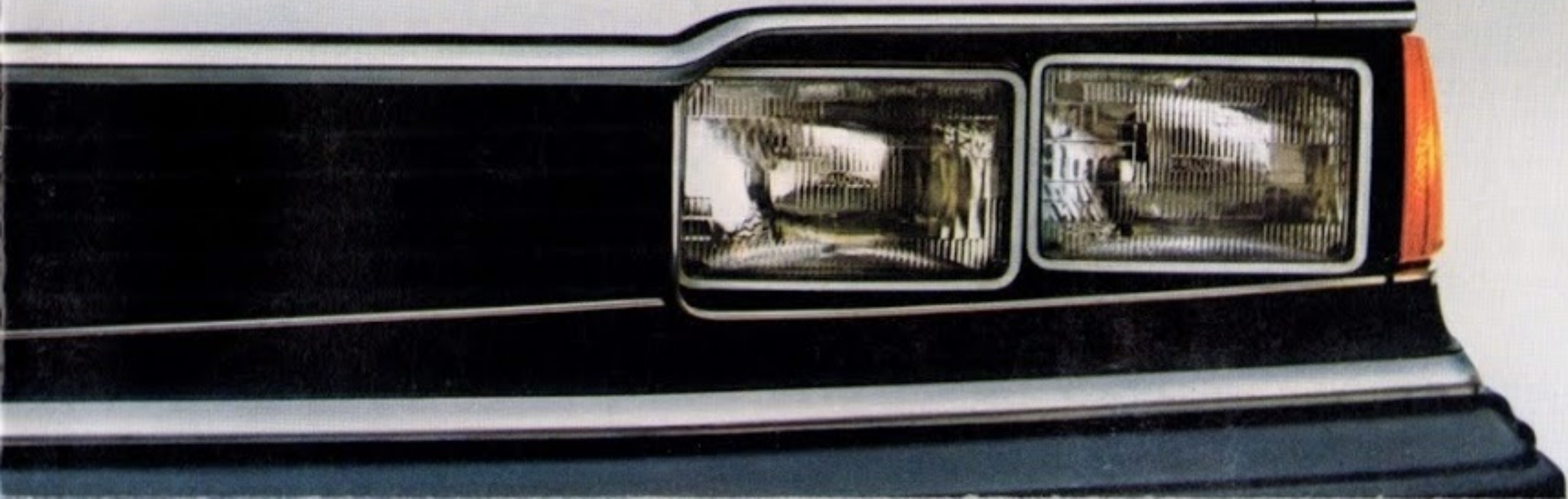


1982 Honda Civic, Accord and Prelude



For 1982, our newly aerodynamically styled Accord Hatchbacks and Sedan are larger and more luxurious than ever. With a smoother, quieter ride. Yet for their increased size and interior space, their fuel efficiency has been improved.*

And this year, you'll find the sleek Honda Prelude Sport Coupe presents further proof that a sportive car's lively performance doesn't have to detract from its efficiency and commonsense advantages.

For all their style and driving enjoyment, our Accords and Prelude haven't lost any of their practical engineering refinements and standard features. Like front-wheel drive, rack and pinion steering and 4-wheel independent suspension.

Honda Accord and Prelude Accessories

We're proud of the long list of standard features that come with all Hondas. We also offer a complete range of optional Honda accessories, designed to enhance the beauty of your new car as well as your driving pleasure. Be sure to ask for genuine Honda accessories. See your dealer for specific accessory availability by model.

Entertainment Systems

- AM Monaural Radio with Push-Button Tuning
- AM/FM Monaural Radio with Push-Button Tuning
- AM/FM Stereo Radio with Push-Button Tuning
- AM/FM Stereo Radio with Push-Button Tuning,
8-Track Player
- AM/FM Stereo Radio with Manual Tuning,
Autoreverse Cassette
- AM/FM Stereo Radio with Push-Button Tuning,
Autoreverse Cassette
- AM/FM Stereo Radio with Push-Button Tuning,
Autoreverse Cassette with Dolby®
- AM/FM Stereo Radio with Electronic Tuning,
Digital Display, Autoreverse Cassette with Dolby®

Stereo Speakers

- Antenna, Power or Manual
- Power Booster (80 watt)

Comfort/Convenience

- Air Conditioning
- Sport Luggage Roof Rack
- Teak Deck Luggage Rack—
Trunk Mount
- Stainless Steel Luggage Rack—
Trunk Mount
- Utility Roof Rack with Bicycle
and Ski Attachments
- Roof Carrier with Ski Attachment
- Remote-Control Right-Side Mirror
- Rear Window Louver

Appearance

- Floor Mats—Carpet or Rubber
- Tonneau Cover—Rigid
- Steering Wheel Cover
- Aluminum Alloy Wheels
- Alloy Wheel Lock Set
- Fog Lamp Kit—Quartz Halogen
- Gearshift Knob—Vinyl or Walnut

Protection

- Bumper Guards
- Door Edge Guards
- Rear Wheel Mud Guards
- Fender Well Trim
- Touch-Up Paint

Honda Accord Hatchback

Our Accord Hatchback could be the new yardstick for commonsense luxury and engineering. Inside and out. With an impressive list of standard features, including a lively 1751cc engine, improved power-assisted/self-adjusting brakes and steel-belted radials. Plus a stylish new interior and a 5-speed transmission. Our 3-speed automatic is optional.





Honda Accord LX Hatchback

Creating a status symbol was the last thing we intended. Perhaps our most elegant hatchback's classic interior styling has something to do with it. Or thoughtful touches like fully vented dash air conditioning. And variable-assist power steering, digital clock and Michelin steel-belted radials. This is luxury you can afford.





Honda Accord 4-Door Sedan

This restyled Accord is likely to send everyone else back to the drawing board again. Room for five passengers, and more comfort and elegance than ever before. With greater fuel capacity and economy.* Along with new cruise control, a more spacious trunk, luxurious interior, variable-

assist power steering, built-in rear seat headrests and much more.





Honda Prelude Sport Coupe

A power-operated moonroof slides back for sporty open-air driving. While a peppy 1751cc engine, with improved fuel efficiency,* adds to the pleasure of responsive road handling and performance. Our automatic transmission, with variable-assist power steering, is optional. And Honda's quality craftsmanship makes it possible to enjoy the Prelude for many moons.





Features and Standard Equipment	ACCORD HATCHBACK	ACCORD LX HATCHBACK	ACCORD 4-DR. SEDAN	PRELUDE
Front-Wheel Drive	X	X	X	X
Four-Wheel Independent Suspension	X	X	X	X
5-Speed Manual Transmission	X	X	X	X
Cruise Control			X	
Rack and Pinion Steering	X	X	X	X
Variable-Assist Power Steering		X	X	X†
Power-Operated Moonroof				X
Air Conditioning		X		
Power-Assisted, Self-Adjusting Brakes—Discs Front, Drums Rear	X	X	X	X
Steel-Belted Radial Ply Tires	X	MICHELIN	X	X
Bright Metal Wheel Trim Rings	X	X	X	X
Protective Body Side Mouldings	X	X	X	X
Tinted Glass	X	X	X	X
Front Side Window Defrosters	X	X	X	X
Rear Seat Heater Ducts			X	
Locking Fuel Filler Door	X	X	X	X
Two-Speed Plus Intermittent Wipers	X	X	X	X
Rear Window Defroster	X	X	X	X
Rear Window Wiper/Washer	X	X		
Remote Hatch/Trunk Lid Release	X	X	LOCKING	X
Remote Control Outside Rearview Mirror	X	X	X	X
Day/Night Rearview Mirror	X	X	X	X
Vanity Mirror—Right Sun Visor	X	X	X	X
Opening Rear Quarter Windows	X	X	DNA	
Reclining Front Bucket Seats with Adjustable Headrests	X	X	X	X
Memory Seat—Right Front		X	DNA	
Rear Seat Built-In Headrests			X	

Features and Standard Equipment	ACCORD HATCHBACK	ACCORD LX HATCHBACK	ACCORD 4-DR. SEDAN	PRELUDE
Moquette Interior Trim		X	X	X
Tricot Seat Inserts—Vinyl Trim	X			
Map Pocket in Doors	DRIVER'S ONLY	X	FRONT DOORS	DRIVER'S ONLY
Full Carpeting (Including Lower Door Panels)	X	X	X	X
Four-Spoke Sport Steering Wheel	X	X	X	X
Rigid, Folding-Type Tonneau Cover		X	DNA	DNA
Cargo Area/Trunk Light	X	X	X	X
Maintenance Reminder	X	X	X	X
Resettable Trip Odometer	X	X	X	X
Low-Fuel Warning Light	X	X	X	X
Tachometer	X	X	X	X
Electronic Warning System	X	X	X	X
Quartz Clock	SWEEP HAND	DIGITAL	SWEEP HAND	DIGITAL
Combination Oil Pressure/Oil Level Light	X	X	X	X
Courtesy Light in Each Door		X	X	
Dual Rectangular Halogen Headlights	X	X	X	
Headlights-On Warning Chime	X	X	X	
Cigarette Lighter	X	X	X	X
Locking Glove Compartment with Light	X	X	X	
Coin Box	X	X	X	X
Stowage Boxes in Rear Seat Side Panels	X	X	DNA	X
Passenger Assist Handle—Right Front and Rear Compartments	X	X	X	RIGHT FRONT ONLY
Stowage Boxes in Each Side of Trunk Floor	DNA	DNA	X	X
Mud Guards—Front and Rear Wheels	X	X	X	FRONT ONLY

DNA = Does Not Apply

†Available Only with Optional Automatic Transmission

For over a decade we've been providing simple answers for America's complex driving needs. With practical, fuel-efficient* Honda Civics. Cars that are surprisingly roomy, comfortable and fun to drive. Along with the kind of engineering refinements and standard features you've come to expect from Honda. Including a transverse-mounted engine, front-wheel drive and rack and pinion steering.

This year, you'll find our Civics are better than ever. With handsome styling and beautiful new interiors. And even higher standards of quality craftsmanship and attention to fit, finish and detail. Typical of the Honda quality that has traditionally earned our cars a remarkably high resale value.

Honda Civic Accessories

We're proud of the long list of standard features that come with all Hondas. We also offer a complete range of optional Honda accessories, designed to enhance the beauty of your new car as well as your driving pleasure. Be sure to ask for genuine Honda accessories. See your dealer for specific accessory availability by model.

Entertainment Systems

- AM Monaural Radio with Push-Button Tuning
- AM/FM Monaural Radio with Push-Button Tuning
- AM/FM Stereo Radio with Push-Button Tuning
- AM/FM Stereo Radio with Push-Button Tuning, 8-Track Player
- AM/FM Stereo Radio with Manual Tuning, Autoreverse Cassette
- AM/FM Stereo Radio with Push-Button Tuning, Autoreverse Cassette
- AM/FM Stereo Radio with Push-Button Tuning, Autoreverse Cassette with Dolby®
- AM/FM Stereo Radio with Electronic Tuning, Digital Display, Autoreverse Cassette with Dolby®
- Stereo Speakers

Antenna, Manual

Power Booster (80 watt)

Comfort/Convenience

- Air Conditioning
- Center Console
- Sport Luggage Roof Rack
- Teak Deck Luggage Rack—Trunk Mount
- Stainless Steel Luggage Rack—Trunk Mount
- Utility Roof Rack with Bicycle and Ski Attachments
- Remote-Control Right-Side Mirror
- Quartz Digital Clock

Appearance

- Floor Mats—Carpet or Rubber
 - Tonneau Cover—Rigid
 - Steering Wheel Cover
 - Aluminum Alloy Wheels
 - Alloy Wheel Lock Set
 - Fog Lamp Kit—Quartz Halogen
 - Gearshift Knob—Vinyl or Walnut
 - 12" or 13" Stainless Steel Wheel Trim Rings
- ## **Protection**
- Bumper Guards
 - Door Edge Guards
 - Rear Wheel Mud Guards
 - Fender Well Trim
 - Touch-Up Paint

Honda Civic 1300 Hatchback

One of the lowest priced cars in America comes with an impressive list of engineering features and standard equipment. Like Honda's energetic 1335cc engine, front-wheel drive and 4-wheel independent suspension. Plus many thoughtful touches inside. If you prefer a larger engine, with

a 5-speed or optional automatic transmission, and more, you'll appreciate our Civic 1500 DX Hatchback.





Honda Civic 1300 FE Hatchback

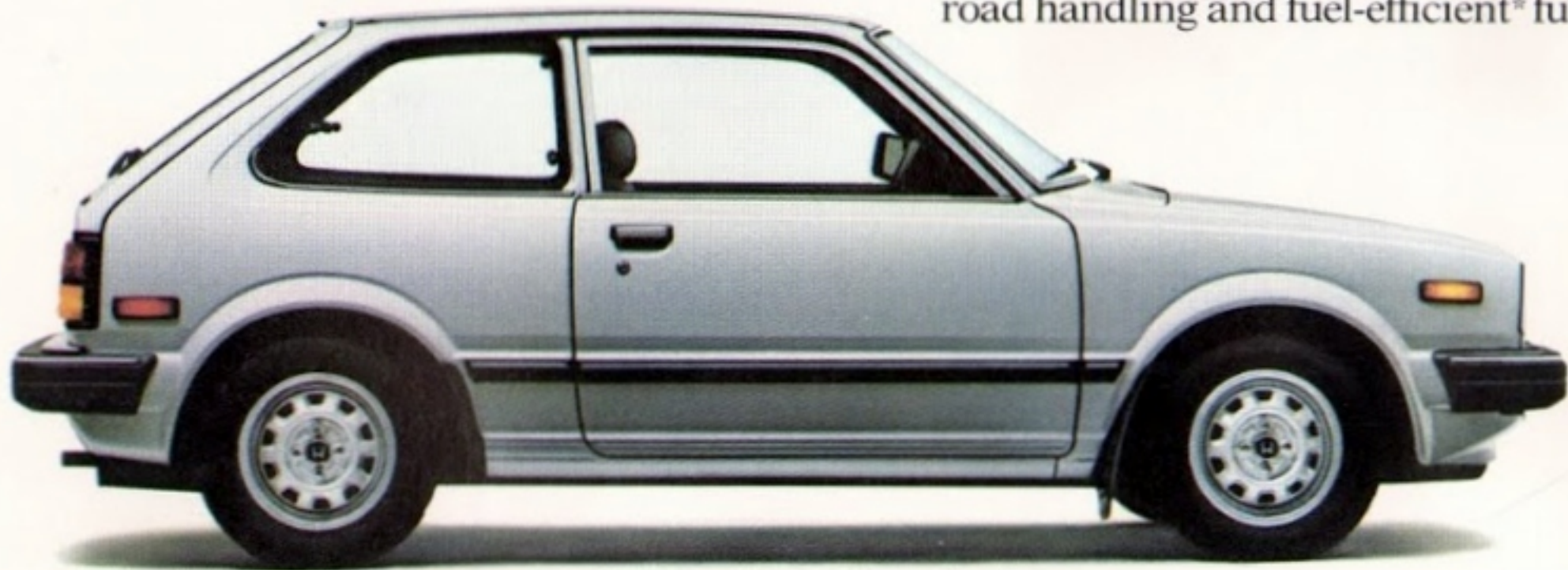
The way it sips gas, you'd think our new Fuel-Efficient Civic didn't like the taste.* All the 1300 Hatchback refinements. As well as a 5-speed overdrive transmission, steel-belted radial tires and tachometer. The FE's luxurious interior includes reclining front bucket seats, plush full carpeting and door window/rear window defrosters.





Honda Civic 1500 GL Hatchback

Our sportiest Civic is often taken for a sports car. Powered by Honda's spirited 1488cc engine, with all the 1300 FE Hatchback refinements and then some. Like an upgraded interior, quartz digital clock, sporty wheel trim rings and a racy 4-spoke steering wheel. Designed for sportive road handling and fuel-efficient* fun.





Honda Civic 4-Door Sedan

A roomy, comfortable automobile that comes with practically everything. Yet goes on practically nothing.* Its smart interior environment features built-in rear seat headrests, handsome upholstery and rich carpeting throughout. You'll also appreciate this Civic for its spacious trunk,

and smooth 5-speed transmission.
Our 3-speed automatic is optional.





Honda Civic 4-Door Wagon

Built with front-wheel drive because wagons are meant to be pulled. And to help deliver the goods when it comes to engineering refinements, interior styling and practical fuel efficiency.* With a wide-opening liftgate and a generous flat, wide, carpeted loadspace. Front door window defrosters come standard. So do steel-belted radial tires.





Features and Standard Equipment	CIVIC 1300 HATCHBACK	CIVIC 1300 FE HATCHBACK	CIVIC 1500 DX HATCHBACK	CIVIC 1500 GL HATCHBACK	CIVIC 4-DOOR SEDAN	CIVIC 4-DOOR WAGON
Front-Wheel Drive	X	X	X	X	X	X
Four-Wheel Independent Suspension	X	X	X	X	X	
4-Speed Manual Transmission	X					
5-Speed Manual Transmission		X	X	X	X	X
Rack and Pinion Steering	X	X	X	X	X	X
Power-Assisted, Self-Adjusting Brakes— Discs Front, Drums Rear	X	X	X	X	X	X
Steel-Belted Radial Ply Tires		X	X	X	X	X
Bright Metal Wheel Trim Rings				X	X	
Protective Body Side Mouldings		X		X	X	
Bright Metal Window Reveal Mouldings				X	X	X
Tinted Glass		X	X	X	X	X
Front Side Window Defrosters	X	X	X	X	X	X
Locking Fuel Filler Door	X	X	X	X	X	X
Two-Speed Plus Intermittent Wipers		X	X	X	X	X
Rear Window Defroster		X	X	X	X	X
Rear Window Wiper/Washer			X	X		
Remote Hatch/Trunk Lid Release		X	X	X	X	
Hatch/Trunk Open Warning Light	X	X	X	X	X	
Remote Control Outside Rearview Mirror	X	X	X	X	X	X
Day/Night Rearview Mirror		X	X	X	X	X
Vanity Mirror—Right Sun Visor					X	
Opening Rear Quarter Windows	X	X	X	X	DNA	
Reclining Front Bucket Seats with Adjustable Headrests	X	X	X	X	X	X
Rear Seat Built-In Headrests					X	

Features and Standard Equipment	CIVIC 1300 HATCHBACK	CIVIC 1300 FE HATCHBACK	CIVIC 1500 DX HATCHBACK	CIVIC 1500 GL HATCHBACK	CIVIC 4-DOOR SEDAN	CIVIC 4-DOOR WAGON
Padded Door Armrests		X	X	X	X	X
Adjustable Rear Seatback				X	DNA	X
Moquette Interior Trim				X	X	
Tricot Seat Inserts—Vinyl Trim	ALL VINYL	FULL TRICOT	X			X
Full Carpeting	X	X	X	X	X	X
Carpeted Lower Door Panels				X	X	
Four-Spoke Sport Steering Wheel				X	X	
Cargo Area/Trunk Light	X	X	X	X	X	X
Resettable Trip Odometer	X	X	X	X	X	X
Tachometer		X		X	X	
Quartz Digital Clock				X	X	
Cigarette Lighter		X	X	X	X	X
Coin Box	X	X	X	X	X	X
Stowage Boxes in Rear Seat Side Panels		X	X	X	DNA	DNA
Passenger Assist Handle—Right Front		X	X	X	X	X
Passenger Assist Handles—Rear Compartment					X	X
Magazine Pocket—Back of Right Front Seat					X	
Stowage Boxes in Each Side of Trunk Floor	DNA	DNA	DNA	DNA	X	DNA
Mud Guards—Front Wheels	X	X	X	X	X	X

DNA = Does Not Apply

*EPA STATEMENT: 1982 EPA mileage figures not available at time of printing. For the latest information, consult your Honda Dealer or the 1982 EPA Gas Mileage Guide.

Accessories, materials, equipment, colors, price, models, specifications and availability are subject to change without notice. Colors may vary from those pictured. Civic rear fender gravel shields shown not available in California.

H O N D A

We make it simple.