



The Honda Price Promise

One sharp, fair price for everyone and better resale values. That's our promise to protect the value of your investment in a new Honda.

Special deals, demonstrator sales and fleet discounts all work to lower resale prices, undermining the value of your new car and speeding up its depreciation. So at Honda New Zealand, we've traded in the old sales model for a new one that is easier, fairer and offers our customers better value.

You don't have to negotiate to get a fair deal on a new Honda. Our Price Promise gives every buyer the same sharp price right from the start and we promise to keep our prices as reliable and consistent as we possibly can. And that means your new Honda will hold its value better than most other brands.

So when you choose a new Honda, you'll drive away with a great car and lasting value. We promise.



TREEFUND

Honda New Zealand is committed to funding 10 native trees for every new Honda sold through the Honda TreeFund. Over 60,000 native trees are expected to be funded every year, as a measurable way of absorbing some of the emissions produced by motor vehicles. See www.honda.co.nz/environment

How to contact us

Tel: 0800 255 666

Fax: 0-9-262 3247

Email: hondacare@honda.co.nz

Website: www.honda.co.nz

Honda New Zealand Limited

105 Wiri Station Road

PO Box 97-340

South Auckland Mail Centre

Specifications and features listed are accurate at the time of printing (October 2004). Honda New Zealand Limited reserves the right to change specifications at any time without prior notice. Some vehicles may be shown with optional equipment and illustrated examples may differ slightly from New Zealand specification. Paint and trim colours shown may differ from actual colours due to limitations of the Printing process.

October 2004 (2005 YM). Part No. 09 09008-SAA-05.

© Honda New Zealand Limited.

Printed on Environmentally Responsible Novatech which has EMAS, ISO14001, and FSC certifications and is ECF.



HONDA

jazz



HONDA
The Power of Dreams

Jazz up your life!



You might live in the city, but you like to get away for the weekend. You love to relax in your garden, or maybe you've got a new house to decorate. You're always on the go and you've usually got company. Whatever your lifestyle, you'll get it all in the Honda Jazz - the perfect match of style, versatility, economy and performance.

Jazz is all about making life easier. The peppy 1.3 litre i-DSI engine zips around town as easily as it cruises on the open road. Slippery aerodynamics and incredible fuel efficiency mean fewer stops at the pump. Power steering and a tiny turning circle make parking a breeze. Wherever you go, Jazz's lively performance and comfortable cabin make it incredibly fun to drive and its ingenious interior design means it's always ready to meet any challenge that comes your way.



Japan Car of the Year Award

British Auto Express, and
Christchurch Press Car of the Year 2002.
NBR, and Sunday Star Times
Small Car of the Year 2002.
AAutocar, BBC Top Gear, and Driver
Small Car of the Year 2003.
Class A Energywise Rally winner 2002.

Small car. Big thinking



Jazz by Design

Refined in Germany by our European design team, the Jazz is a little car with a very big attitude. The deep front air dam and flared wheel arches emphasise the low, sporty stance. Big multi-reflector headlamps flank a steeply raked, scalloped bonnet, accentuating the sleek lines and distinctive form. There's a choice of colours to match your personality. Behind the gorgeous design lies solid Honda engineering. The sweeping windscreen and side windows offer excellent all-round visibility and the doors are designed to hold in three positions, making getting in and out

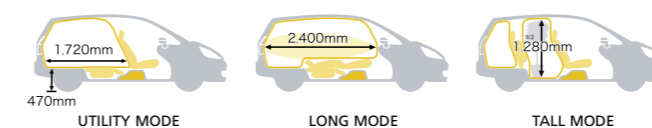
of the Jazz a breeze. Inside, bold curves and striking metallic accents create an inviting and dynamic driving environment - from the chrome instrument cluster and integrated radio and CD player, to the three large dials that control the air conditioning. Controls are firm and precise to the touch and every surface has a solid, quality feel. And because a comfortable, relaxing interior creates a better driving experience, the Jazz is thoroughly soundproofed to be supremely quiet and peaceful. Even the doors have a dual seal to reduce the amount of noise intruding into the cabin.



* CORRECT INTERIOR COLOUR SCHEME SHOWN BOTTOM RIGHT

Jazz may be cute and compact on the outside, but inside it's the world's roomiest small car. Innovative engineering means there's more than enough room for five adults and their gear thanks to the cabin-forward design, near flat floor and compact engine. Inside the cabin, door panels and handles are scalloped and recessed wherever possible. They're the small details that add up to a huge advance in space and comfort.

The Honda Jazz has an amazing Magic Seat system, which opens up a huge range of loading possibilities in seconds. Need to carry tall shrubs? A large canvas? Maybe even a couple of mountain bikes? Just flip up the rear seat cushion and you've got all the room you need behind the front seats. Fold one or both rear seats flat to make space for large suitcases or bulky items of furniture. And for smaller, everyday objects, there's a deep storage bin in the centre console along with three illuminated cup holders. You'll also find extra storage trays on both sides of the dash and even a handy secret parcel space beneath the rear seats.



Enjoy the performance



Wherever you go in the Jazz, you're assured of superb handling and stability. Using simulations and prototype testing, Honda engineers have created an amazingly light but rigid new frame that delivers better protection, reduced noise and vibration and superior ride and handling. The ingenious design of the compact front and rear suspension frees up interior space while delivering class-leading ride and handling. The Jazz is also equipped with Honda's advanced computer-controlled electric power steering. As you drive, the system senses your speed and continuously adjusts the level of power assistance. Steering is easier at low speeds and firmer at high speeds so you're always in complete control.

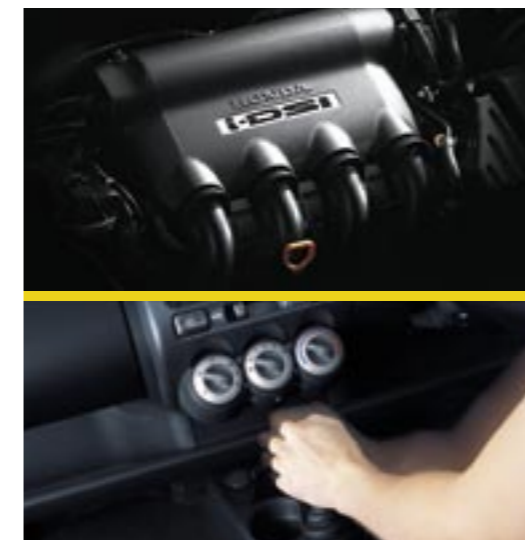
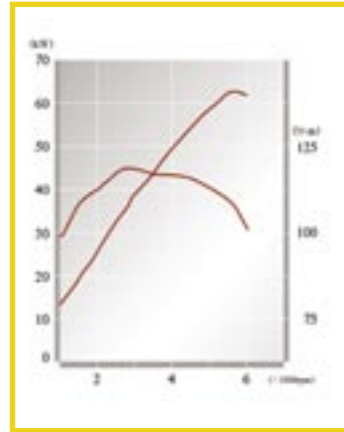
Power quartet

Press the accelerator and the Jazz's four cylinder, fuel injected 1.3 litre engine responds with a surge of power. The engine generates 61kW at a low 5700 rpm and maximum torque of 119Nm at only 2800 rpm, which is great for city and highway driving. You can choose from the sporty 5-speed manual or super smooth, CVT automatic.

The Jazz is designed to take equal care of people and the environment. Thanks to i-DSI (Intelligent Dual Sequential Ignition) the engine offers not only lively performance, but exceptional fuel economy. i-DSI uses two spark plugs per cylinder to burn petrol more

efficiently. At the same time, Honda's LEV II (Low Emission Vehicle) technology reduces exhaust emission levels to better 2006 regulations.

A redesigned combustion chamber, high performance catalyst and improved air to fuel ratio deliver more power and torque with enhanced fuel economy and lower greenhouse gas emissions.



i-DSI uses computer timing to continuously adjust the firing times of each spark plug for maximum fuel burn. The result is extra torque and better fuel economy throughout the rev range.



Advanced Macpherson strut front suspension with anti-roll bar and offset front springs for smoother damping action.



Torsional beam and vertical dampers mean better handling and increased interior space.



Jazz handles brilliantly on the move and stops safely in all conditions. Four-sensor, three-channel ABS braking is standard, together with Electronic Brake Distribution (EBD). Whether fully loaded or with just one occupant, EBD adjusts the amount of braking force required between the front and



Without ABS and EBD

rear wheels to stop safely. In addition, Emergency Brake Assist applies further power assistance in moderate to heavy braking situations. The combination of ABS, EBD and Emergency Brake Assist provides the safest possible braking under all conditions, while offering a consistent brake pedal feel.



With ABS and EBD

Play safe

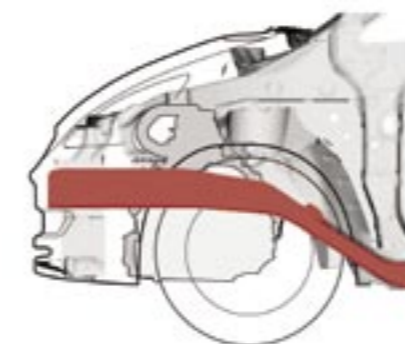
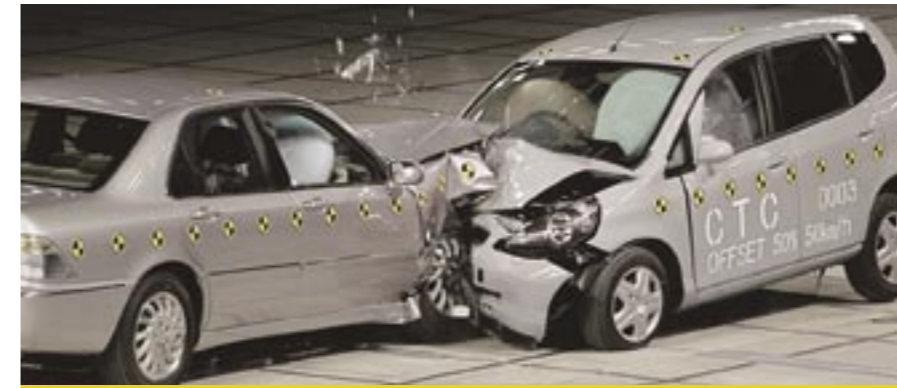
Some small cars skimp on safety, but why should you accept such a risk? In designing the Jazz, we set out to achieve the best possible level of safety and security with extensive testing at Honda's multi-directional crash test facility.



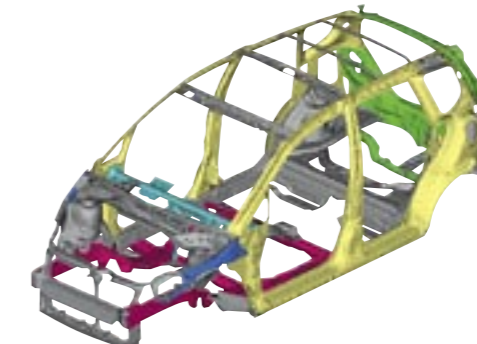
Stay safe

The Honda Jazz has big car safety features and a 4 Star Euro NCAP test crash rating. Honda's unique G-Force control is built into the core of the car, moderating the force of any impact and helping to maintain a safety zone around you and your passengers. The passenger compartment is framed by slim but immensely strong laser-welded pillars for maximum rigidity and visibility. Inside, you and your passengers are protected by a ring

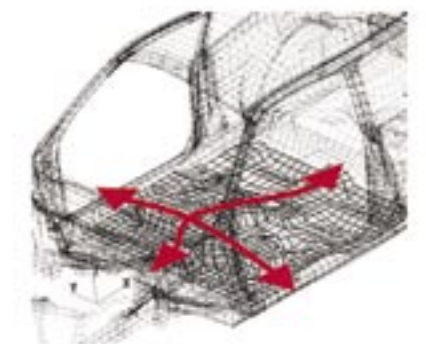
of reinforced steel, side intrusion beams, passenger safety zones and seatbelt pretensioners with load limiters. Even the fuel tank has extra crash protection by being located centrally beneath the floor. Inside the cabin, driver and front passenger airbags are standard, with head restraints and three 3 point seat belts in the rear. And just in case someone tries to get in uninvited, the Jazz is fitted with remote central deadlocks, a master lock button and an immobiliser.



The G-CON system uses progressive energy absorbing chassis rails to divert energy away from the cabin in a collision.



Key energy absorbing components in the high-strength passenger protection cell.



The arched floor directs impact loads away from the cabin area.

Jazz it up

When you drive a Jazz, you automatically set yourself apart from the crowd, but why stop there when there's a full range of genuine Honda accessories to personalise your Jazz just the way you like it. Accentuate the sleek lines with a colour coordinated body kit and alloy wheels or create your own

personal driving space with a 6-disc CD changer or electronic reversing sensors. Your Honda Agent can help you select the accessories for your Jazz and have them installed at the time of purchase. And they'll be fully covered by the 36 month, 100,000 kilometre new car warranty.

Sports

Show your distinctive style with the Jazz Sports Pack (shown below) which includes: Alloy wheels, Lower skirt (front), Lower skirt (rear), Lower skirt (side), Fog lights and Tailgate spoiler.



Accessories

- Front and rear parking sensors • Door side mouldings • 6-disc CD changer • Honda mats • Alloy wheels • Tailgate spoiler
- Lower skirt (front) • Lower skirt (rear) • Fog lights • Lower skirt (side) • Door visors • Armrest console • Tow bar
- Boot liner • Roof rack. For further accessory options please feel free to ask your Honda agent.

Colour Options



MECHANICAL

8-valve twin spark i-DSI four cylinder in line aluminium engine with intelligent - Dual and Sequential Ignition.	•
1.3 litre with maximum power of 61 kW @ 5,700 rpm and maximum torque at 119 Nm @ 2,800 rpm.	•
LEV II (Low Emission Vehicle) rating.	•
91-octane regular unleaded fuel. 42 litre tank capacity.	•
5 speed manual transmission.	•
Second-generation stepless ratio CVT automatic transmission with enhanced engine braking technology.	•
Front MacPherson strut suspension with anti-roll bar.	•
Rear trailing arm with torsional beam suspension and anti-roll bar.	•
Speed-sensitive electric power-assisted rack and pinion steering (EPS).	•
Front ventilated disc brakes and rear drum brakes.	•
Steel 14 x 5" wheels with 175/65R14 steel belted low profile tyres.	•

SAFETY AND SECURITY

Engine immobiliser and remote central locking on all doors.	•
Master door lock switch.	•
G-Force control technology body shell for maximum passenger protection.	•
ABS (Anti-lock Braking System) with EBD (Electronic Brakes Distribution) and EBA (Emergency Brake Assist).	•
Driver and passenger front SRS airbags.	•
3 point ELR front seatbelts with pretensioners, load limiters and height adjustable anchor points.	•
3 x 3-point ELR rear seat belts, rear child seat anchorages.	•
Side intrusion beam.	•
Child seat restraint 'Auto Locking Reel' rear seat belts, rear childproof door locks.	•
Collapsible steering column.	•
Safety reverse drivers window.	•

EXTERIOR

Impact absorbing body coloured bumpers, body coloured door handles and wing mirrors.	•
Green glass all round.	•
Front and rear mudflaps.	•
Twin speed front windscreen wipers with intermittent and flick/wipe/wash feature.	•
Rear wiper and demister.	•

INTERIOR

Single in-dash CD player.	•
Power windows, auto driver's window with safety reverse cut-out and illuminated driver's switch.	•
Manual air conditioning.	•
Power steering with tilt adjustable steering column.	•
60/40 fold down rear seat backs.	•
Flat floor load bay with the rear seats down. Remote release for front passenger and driver seats.	•
Central cargo bay. Magic Seat system with rear seat flip-up and fold flat options.	•
Height adjustable drivers seat.	•
Coat hook on back of front passenger seat.	•
Driver and passenger vanity mirrors with cover, glove box and centre console.	•
Drink holder and tray.	•
Rear tonneau cover.	•
Under dash parcel shelf.	•
Grab handles rear and left front.	•

DIMENSIONS

Length (mm).	3830
Width (mm).	1675
Height (mm).	1525
Turning circle (metres).	9.4

CAPACITIES

Luggage capacity (VDA litres rear seats up/flat).	380/1321
Maximum warrantable towing weight – manual/auto.	1000/800kg
Seating capacity.	5



For your peace of mind, every new Honda comes with a 3 year or 100,000 kilometre (whichever comes first), body and mechanical warranty and 24 hour road-side assist.

