



**HONDA**



**FREEDOM IN STYLE**

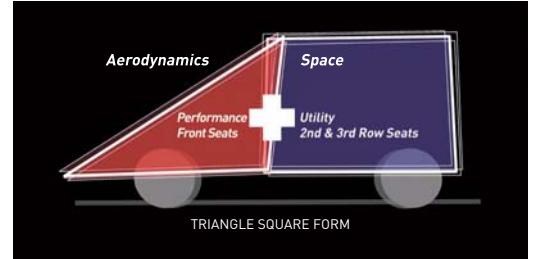
**FREED**

# THE COMPACT URBAN MPV THAT ADDS A LITTLE STYLE TO YOUR CITY LIFE.

The Freed is now more stylish, with improved aesthetic and functional enhancements both on the inside and outside which give this compact yet spacious MPV a more premium feel. Of course you'll still get to enjoy its roomy walkthrough cabin with captain seats, automatic sliding door<sup>#</sup>, powerful i-VTEC engine, dual layer dashboard and 3<sup>rd</sup> row foldable seats along with its host of enhanced safety features. Whatever you do, do it in style with the Freed.

## 4 SEATER + SHAPES

The beauty of using both a triangle and a square in the designing of the Freed is that it allows for a compact yet spacious form. This artistic yet curvy exterior can be used aerodynamically on the open road, and to carry more things around.



## Dual Layer Dashboard

Comes with stylish chrome plating on the upper layer while keeping the center free of obstruction, café style.



## Automatic Sliding Doors With Remote Control<sup>#</sup>

Makes getting in and out easier especially in tight parking situations. It is also equipped with anti-pinch sensors that reverse the closing process when an obstacle is detected.



## Walkthrough Cabin

The four captain seats in the first two rows give easy access while the theatrical tiered seating position increases visibility.



## 3<sup>rd</sup> Row Foldable Seats

To accommodate more passengers or cargo, the Freed comes with foldable 3<sup>rd</sup> row seats, which is easily folded in just 3 steps.



## 1.5L i-VTEC Engine

Its bigger intake valves and torque boost resonator give excellent power and fuel efficiency.



## Comfortable Interior

Featuring plush leather seats<sup>#</sup> and heat absorbing windows for more comfort.



## Multi-Layer Meter Cluster

Featuring a new coloured meter cluster for better visibility.



## NEW FEATURES



Chrome Front Grille.



Chrome Rear License Plate Garnish.



Stylish Front Bumper.



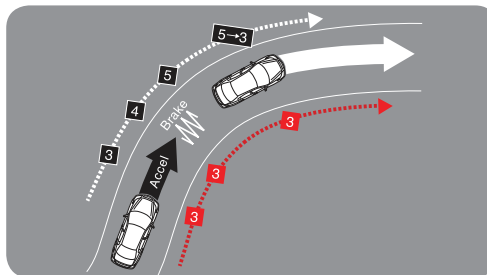
Sporty 15" Alloy Wheels.

## SAFETY



### SRS Airbags

For added safety, the Freed comes with Dual Front SRS Airbags.



### Shift Hold Control + Grade Logic Control

This allows stable driving around corners and also for traversing hills.



### G-CON Technology & JNCAP

G-CON with Advanced Compatibility Engineering (ACE) minimises impact on collision while its 6-star JNCAP safety rating ensures greater peace of mind.

\*Actual model may vary from image shown. \*\*Specifications may vary and are subject to change without prior notice.

## SPECIFICATIONS

MODEL	GRADE S	GRADE E
<b>ENGINE</b>		
Engine Type	4 Cylinder, 16 Valve SOHC i-VTEC	
Fuel Supply System	PGM-FI (Programmed Fuel Injection)	
Bore & Stroke	73.0 x 89.4	
Displacement [cc]	1,497	
Compression Ratio	10.4:1	
Maximum Horsepower kW/rpm	87/6,600	
Maximum Torque Nm/rpm	146/4,800	
<b>TRANSMISSION</b>		
Transmission Type	5-Speed Automatic	
<b>STEERING</b>		
Type	Rack and Pinion (Electric Power Assist)	
Turning Radius at Wheel [m]	5.2	
Turning Radius at Body [m]	5.6	
<b>BRAKE SYSTEM</b>		
Type [Front]	Ventilated Disc	
[Rear]	Drum	
Parking Brake	Foot Brake	
<b>SUSPENSION</b>		
Type [Front]	MacPherson Strut	
[Rear]	Torsion Beam Axle	
<b>DIMENSIONS</b>		
Length [mm]	4,215	
Width [mm]	1,700	
Height [mm]	1,735	
Wheelbase [mm]	2,740	
Thread [Front/Rear] [mm]	1,478/1,466	
Ground Clearance [mm]	165(unloaded)	
Curb Weight [kg]	1,330	1,355
Fuel Tank Capacity [Litre]	42	
Seating Capacity	7	
<b>TYRES</b>		
Size	185/65R15	
<b>WHEELS</b>		
Alloy Wheel	15"	
Spare Wheel	Normal Size	

\* Actual colour may vary in detail from colours shown.

\*\* Specifications may vary and are subject to change without prior notice.

## MAJOR EQUIPMENT

MODEL	GRADE S	GRADE E
<b>EXTERIOR</b>		
Halogen Headlight & High-mount Stoplight		•
Power Sliding Door	-	L+R, anti-pinch
Power Retractable Door Mirror		•
Door Mirror with Side Turn Light	-	•
Tailgate Spoiler	-	•
Front Wiper System	Intermittent	Variable Intermittent
Rear Wiper System		•
<b>INTERIOR</b>		
Upholstery	Black	
Seats	Fabric	Leather
Captain Seat	1st & 2nd Row	
Height Adjuster Driver Seat		•
Armrest (Both Sides)	DR/AS/2nd Row	
Third Row Foldable Seats		•
Leather Steering Wheel	-	•
Tilt Steering Wheel		•
Multi Information Display (MID)		•
Vanity Mirror	DR & AS	
Auto Climate Control Air-conditioning	-	•
Accessory Socket		•
4 Speakers		•
Seat Back Pockets	DR & AS	
<b>AUDIO</b>		
Alpine DVD Player	-	•
2 Din Audio with USB Port		•
AUX Jack		•
<b>SAFETY &amp; SECURITY</b>		
Dual Front SRS Airbags		•
Anti-Lock Braking System (ABS)		•
Electronic Brakeforce Distribution (EBD)		•
G-Force Control Technology (G-CON)		•
Seat Belts	[1st Row]	3-point ELR x 2, Pretensioner
	[2nd Row]	3-point ELR x 2
	[3rd Row]	3-point ELR x 2 + 2-point Lap Belt x 1
Security Alarm with Immobiliser		•
Remote Control Sliding Doors	-	•
Ultrasonic Sensor		•
2 Corner Reverse Sensor		•

## COLOURS



Brilliant White Pearl  
(NH-636P)



Polished Metal Metallic  
(NH-737M)



Crystal Black Pearl  
(NH-731P)



5-year Warranty with Unlimited Mileage.  
\* Terms and conditions apply

Authorised Dealer