

2016 FIT





**You don't just drive.
You hop in. You load up.
You sightsee. You explore.
Also, you drive.**

Overview P.1/2

Exterior P.3/4

Interior P.5/6

Technology P.7/8

Versatility P.9/10

**Performance &
Efficiency** P.11/12

Safety P.13/14

Accessories P.15/16

**The Power
of Dreams** P.17/18

Warranty P.19/20

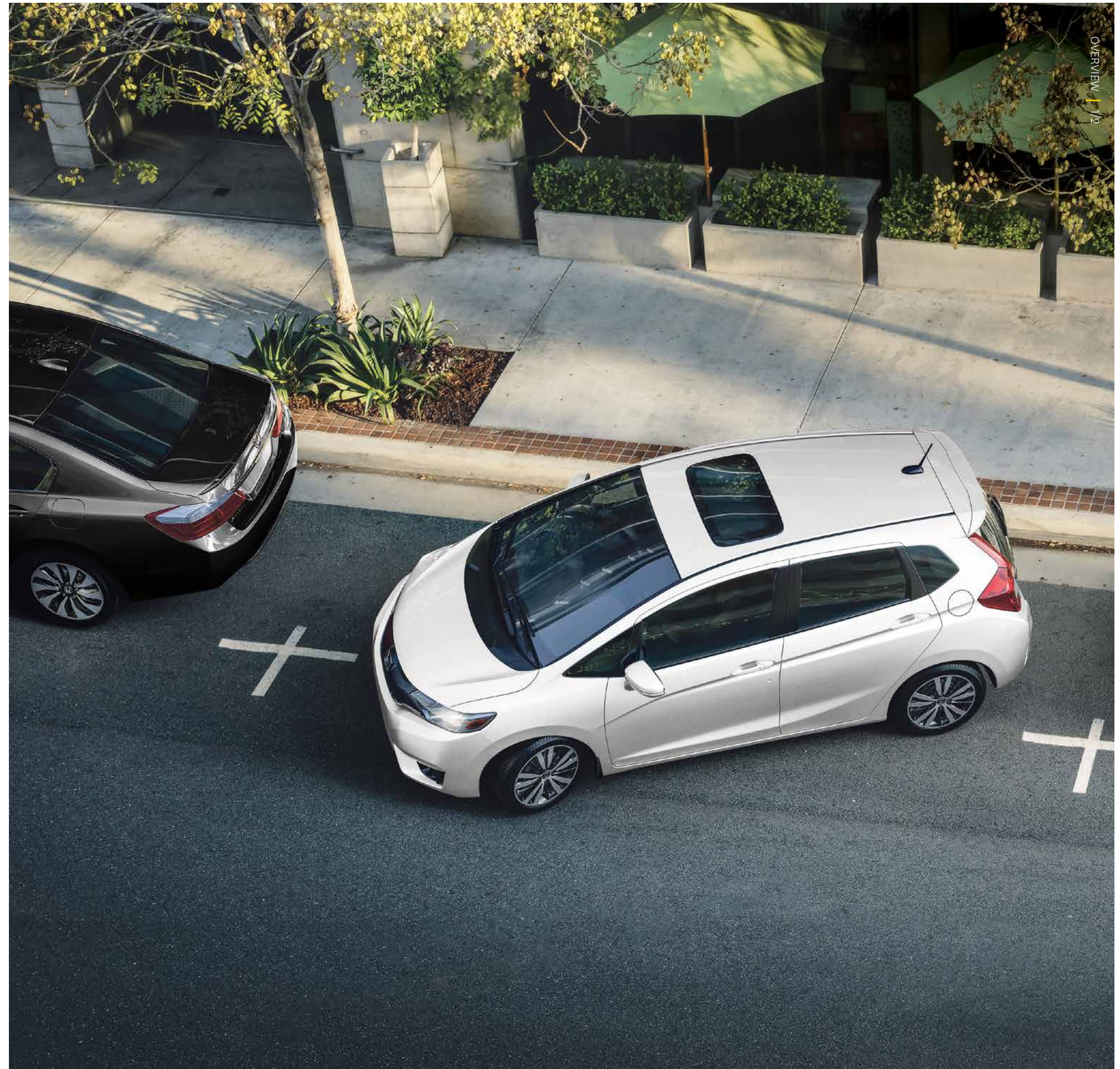
Specs P.21/22

Colours & Trims P.23/24

Small doesn't just pack a punch. It packs a lot of cargo, too.

You could say that the Fit is synonymous with fun. It's fun to drive, full of fun tech features and has room for fun when you're riding with four of your friends. Plus, it's even fun to park. All those small spots will suddenly feel bigger. That's because Honda made the guesswork a lot easier in the 2016 Fit with features like its multi-angle rearview camera¹ as well as the available and Honda-exclusive² Honda LaneWatch™ blind spot display.¹ Together, they will help you with the parts of the road that are a little hard to see. Inside its sporty exterior, the 60/40 Split 2nd-Row Magic Seat® offers four configurations, which make its generous passenger volume and class-leading cargo volume² (with the rear seats down) feel even more substantial. And the available paddle shifters add a dimension of fun to the available continuously variable transmission (CVT), while its Earth Dreams™ engine is designed to increase efficiency without sacrificing performance. Add in Honda-tuned handling and this is a ride you'll want to share. Plus, with impressive fuel economy ratings and Honda's legendary safety features, the Fit has a good head on its shoulders. Even when it comes to parking.

1. None of the features we describe are intended to replace the driver's responsibility to exercise due care while driving. Drivers should not use handheld devices or operate certain vehicle features unless it is safe and legal to do so. Some features have technological limitations. For additional feature information, limitations and restrictions, please visit www.honda.ca/disclaimers and refer to the vehicle's Owner's Manual.
2. Based on information available to Honda Canada Inc. as of September 01, 2015.





It's all about the journey. And the occasional good looking selfie.

Blending an urban sensibility with European design elements, the 2016 Fit looks good on the road. And looks good with you in it. Up front, the elegant solid wing front grille, sporty bumper, aggressive headlights and available fog lights are smoothly integrated into the body, while a strong character line flows smartly through the side profile to complete the bold look. Down at road level, the available 16" alloy wheels tell the world you're ready for action. Around back, the available body-coloured rear roofline spoiler adds a sporty touch, while the LED brake lights finish off the Fit's stylish look. It goes with everything, everywhere you go.

- Available 16" alloy wheels
- Available fog lights
- Expanded view driver's door mirror
- Heated power door mirrors
- Available mirror-integrated LED turn indicators
- LED brake lights



Attractive on the outside. Substance on the inside.

You know that it's what's inside that counts just as much as what's on the outside. That's why the Fit's premium interior is designed to surround you in sophistication and convenience. The available Display Audio System¹ is the crown jewel of the cabin, with its 7" touch-screen that makes controlling your audio more intuitive. With the available heated front seats warming you from below in the winter and the available power moonroof refreshing you from above in the summer, the Fit is ready for virtually any weather. Style and comfort are a priority throughout, with the available leather-trimmed seating surfaces and available leather-wrapped steering wheel giving the interior a premium feel. Add in a driver-focused design highlighted by the height-adjustable driver's seat and excellent visibility, and you have an interior that punches well above its class. Because you care about the details. And so do we.

- Available Display Audio System¹ with 7" touch-screen**
- Available automatic climate control with air-filtration system**
- Available heated front seats**
- Available power moonroof with tilt feature**
- Available leather trimmed-seating surfaces**

1. None of the features we describe are intended to replace the driver's responsibility to exercise due care while driving. Drivers should not use handheld devices or operate certain vehicle features unless it is safe and legal to do so. Some features have technological limitations. For additional feature information, limitations and restrictions, please visit www.honda.ca/disclaimers and refer to the vehicle's Owner's Manual.



It's like a smartphone on wheels.

We believe a subcompact doesn't have to be small on tech, which is why we made the multi-angle rearview camera¹ standard. And with its available tech features, the Fit is ready to leave your most tech-savvy friends in awe.

7" Display Audio System with HondaLink™ Next Generation

The available 7" Display Audio System¹ is a tablet-like touch-screen that lets you pinch, swipe and tap to navigate through the audio system, display settings and the next generation of available HondaLink.^{TM1,2} With so much content at your fingertips, the Display Audio System is innovation you can touch.

Multi-angle rearview camera

Standard on the Fit is the multi-angle rearview camera.¹ No matter which trim you go for, eyes in the back of your ride help take the sweat out of reversing with three distinct angles: wide, normal and top-down.

Honda LaneWatch™ blind spot display

See more of the road with the available Honda LaneWatch blind spot display,¹ which is a Honda exclusive.⁴ A camera mounted under your passenger-side mirror sends a live feed to the 7" Display Audio System¹ screen, revealing nearly four times more than just the mirror alone.

Proximity key entry system with pushbutton start

Just walk up, get in and go. The Fit's available proximity key entry system recognizes when you and your key are near. All you have to do is grab the handle to unlock and push the start button to get on your way.

Honda Satellite-Linked Navigation System™

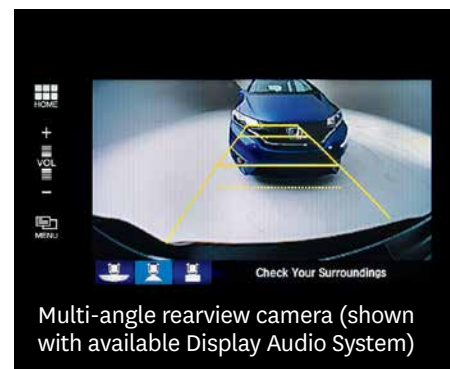
True adventures take you to places you've never been, which is why the Fit boasts the available Honda Satellite-Linked Navigation System.^{TM1,3} It features pinch-to-zoom gestures and bilingual Voice Recognition, so your co-pilot can relax and enjoy the ride.

Bluetooth® capability

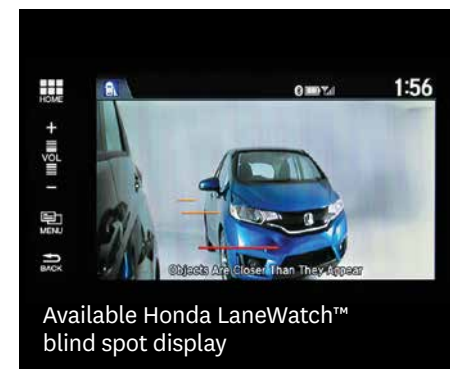
Bluetooth Streaming Audio^{1,2} and the HandsFreeLink™-bilingual Bluetooth wireless mobile phone interface^{1,2} are standard, which means you can stream audio entertainment and make or receive phone calls from the comfort of your pocket.



Available Display Audio System with 7-inch touch-screen



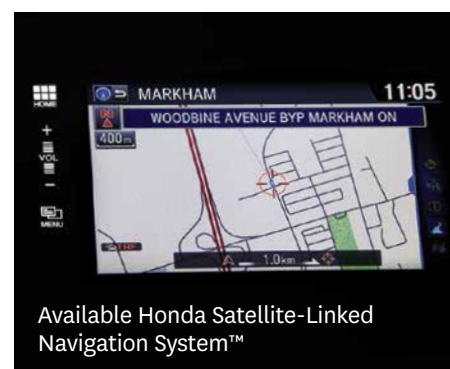
Multi-angle rearview camera (shown with available Display Audio System)



Available Honda LaneWatch™ blind spot display



Available proximity key entry system with pushbutton start



Available Honda Satellite-Linked Navigation System™



HandsFreeLink™-bilingual Bluetooth® wireless mobile phone interface

1. None of the features we describe are intended to replace the driver's responsibility to exercise due care while driving. Drivers should not use handheld devices or operate certain vehicle features unless it is safe and legal to do so. Some features have technological limitations. For additional feature information, limitations and restrictions, please visit www.honda.ca/disclaimers and refer to the vehicle's Owner's Manual.

2. Only compatible with certain devices and operating systems. Cellular data and/or voice charges may apply, including roaming charges and/or other amounts charged by your wireless carrier.

3. Map database covers major metropolitan areas in Canada and the 48 contiguous U.S. states.

4. Based on information available to Honda Canada Inc. as of September 01, 2015.

Room for every part of your personality.

Whether it's a surfboard, snowboard, or passengers on-board, the Fit was designed with space in mind. The 60/40 Split 2nd-Row Magic Seat® and its four seating modes have the answer for virtually any situation, and the wide-open rear doors and low cargo floor make it a breeze to load. But if you're simply looking for a place to put your new friends, the Fit will treat them right with comfortable, spacious seating and impressive rear legroom. There's plenty of storage space, too. The available centre armrest console can easily hold most tablets, and includes a USB device connector¹ and 12-volt power outlet, allowing back seat passengers to use their device while it's plugged in.

Utility Mode

There'll be fewer tough decisions on what to bring and what to leave behind. In utility mode, cargo space is in high supply. Simply fold down the 60/40 Split 2nd-Row Magic Seat® and you'll free up the Fit's class-leading² 1,492 litres of cargo space.

Tall Mode

Don't sweat the tall stuff. Fold up the 60/40 Split 2nd-Row Magic Seat® and you'll be able to comfortably fit in most medium-sized plants. It's the ideal setting for cargo that needs to stand upright.

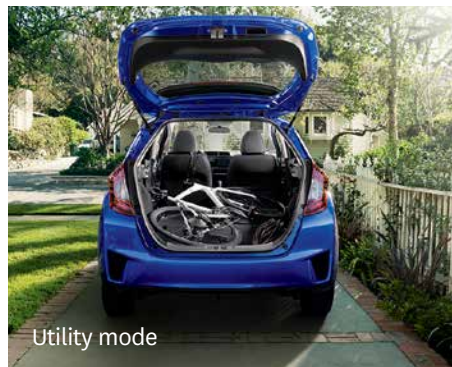
Refresh Mode

A subcompact you can lounge in? Believe it. Let the chill times roll by popping off the front seat head restraints and folding back the front seats to create a comfy relaxation space.

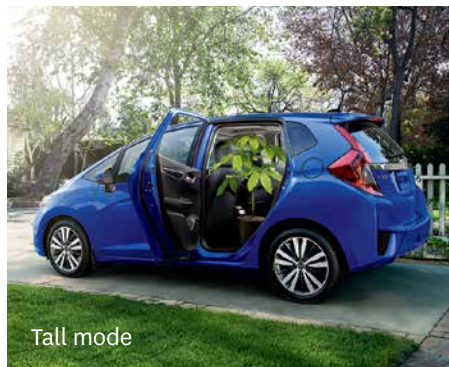
Long Mode

Headed to the cottage? You'll love the cabin space of the Fit. You can fold down just the right side of the rear seat and fold back the front passenger's seat and comfortably fit longer items.

¹ Only compatible with certain devices and operating systems. Cellular data and/or voice charges may apply, including roaming charges and/or other amounts charged by your wireless carrier.
² Based on information available to Honda Canada Inc. as of September 01, 2015.



Utility mode



Tall mode



Refresh mode

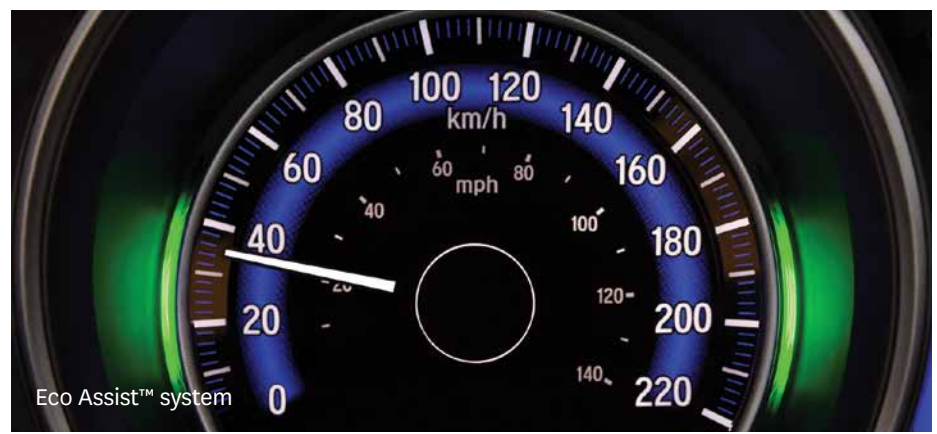


It's your way or the highway. Or the detour. Or the back road. Maybe even the byway.

Wherever you're going, the Fit is designed with fuel efficiency in mind and is a downright joy to drive. Take 130 hp¹ and bump up the fun factor with the available continuously variable transmission (CVT), paired with the available paddle shifters. If stick is your thing, go for the 6-speed manual transmission. Either way, the 1.5-litre, Direct Injection, i-VTEC[®] Earth Dreams™ engine has been designed to increase fuel-economy without sacrificing performance, and Honda-tuned handling makes for a sporty and nimble ride with stability, responsiveness and quiet comfort. Add in the Eco Assist™ system and the available ECON mode button (on trims with available CVT), and it's no wonder the Fit earns fuel economy ratings of as low as 7.0/5.7/6.4L/100 km² (City/Highway/Combined; LX CVT trim). How's that for good clean fun?

- 1.5-litre, 16-valve, Direct Injection, DOHC, i-VTEC[®] 4-cylinder engine**
- Available CVT with available paddle shifters**
- 130 horsepower¹**
- Earth Dreams™ technology**
- Eco Assist™ system**
- Available ECON mode button**

1. Horsepower and torque calculations reflect SAE net, Rev. 08/04, SAE J1349 procedures.
2. Estimated fuel economy based on Government of Canada's 5-cycle testing method. Your actual fuel consumption will vary based on driving habits and other factors - use for comparison only. For more information on 5-cycle testing, visit <http://vehicles.nrcan.gc.ca>



Solid on safety.

At Honda, we strive to provide a high level of standard safety features to help ensure the safety of occupants, other drivers and even pedestrians. This added peace of mind helps our drivers maintain the confidence to enjoy every road to the fullest.



1. None of the features we describe are intended to replace the driver's responsibility to exercise due care while driving. Drivers should not use handheld devices or operate certain vehicle features unless it is safe and legal to do so. Some features have technological limitations. For additional feature information, limitations and restrictions, please visit www.honda.ca/disclaimers and refer to the vehicle's Owner's Manual.

2. Only compatible with certain devices and operating systems. Cellular data and/or voice charges may apply, including roaming charges and/or other amounts charged by your wireless carrier.

3. Operation requires wireless mobile phone to be paired with the vehicle. Operation is dependent upon cellular data and/or voice connection availability and GPS satellite signal reception.

ACTIVE SAFETY

Controlled Braking

To assist with safe stopping, the 4-wheel Anti-lock Braking System¹ (ABS) is designed to help you maintain control under hard braking conditions, while Electronic Brake-force Distribution (EBD) helps to optimize braking power based on weight distribution inside the vehicle. In addition, Brake Assist is engineered to help improve braking performance by applying brake pressure when a panic stop is detected.

Vehicle Stability Assist (VSA[®]) with Traction Control

Vehicle Stability Assist¹ with Traction Control is designed to sense and help correct oversteer and understeer scenarios to enhance handling and cornering stability, while Traction Control is designed to minimize wheel spin when accelerating on loose or slippery surfaces, helping to inspire greater driver confidence.

Hill Start Assist¹

When you take your foot off the brake, this feature is engineered to temporarily maintain brake pressure to help prevent your Fit from starting to roll backwards when stopped on an incline.

PASSIVE SAFETY

Advanced Compatibility Engineering™ (ACE™) body structure

The highly innovative, next-generation Advanced Compatibility Engineering™ (ACE™) body structure is engineered to help disperse frontal impact energy to enhance occupant protection, while more effectively controlling it in severe collisions, to help prevent intrusion into the passenger cabin.

Six standard airbags

The Fit comes with six standard airbags. It features dual-stage, multiple-threshold front airbags as well as Smartvent™ side airbags, which are designed to deploy in a manner that mitigates the risk of injury to out-of-position or smaller occupants.

HondaLink™ Assist Automatic Emergency Response System

The available HondaLink Assist Automatic Emergency Response System^{1,2,3} helps you get the help you need when you need it most. If the airbags deploy, your Display Audio System¹ is designed to automatically attempt to put you on a call with an operator who will forward your location to first responders if needed. It works with any compatible Bluetooth[®]-paired phone as long as it has reception, does not require a subscription and gives you added peace of mind while you're on the road.

Seat belt safety

The Fit helps prepare you for the unexpected with 3-point height-adjustable front seat belts with automatic tensioning system and 3-point rear seat belts.

Child safety

The Fit features childproof rear door locks, as well as rear seat Lower Anchors and Tethers for Children (LATCH), which give you a simple and convenient method to install compatible child safety seats without using the vehicle's seat belt system.

Pedestrian safety

Innovative pedestrian safety features include an energy-absorbing hood and front fenders and deformable wiper pivots.



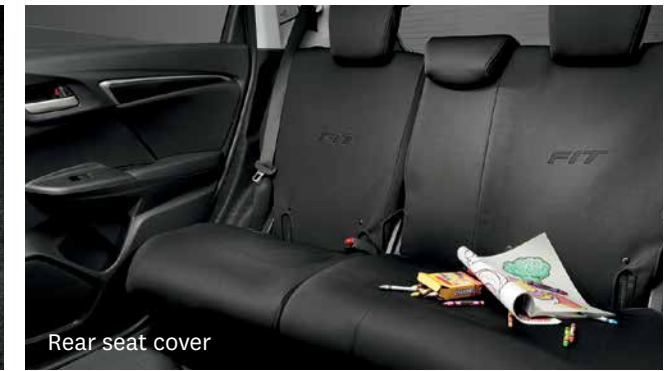
Rear splash guards



Door visors



All-season floor mats



Rear seat cover



Front grille



Door sill trim, illuminated



Fog light garnish



Cargo liner



Cargo net



Cargo tray

Accessories.

Other Accessories Available

- 16" alloy wheel
- Ashtray, cup-holder style
- Body side molding
- Car cover
- Cargo cover
- Cargo net tie-down hook
- Door edge film
- Door edge guards
- Engine block heater
- Fog lights
- Full nosemask
- Hood edge deflector
- Interior illumination
- Moonroof visor
- Rear bumper appliqué
- Soft cargo organizer
- Trunk edge and bumper protector
- Wheel locks

Fit Bundle 1

- All-season floor mats
- Rear splash guards

Fit Bundle 2

- All-season floor mats
- Rear splash guards
- Cargo tray

Fit Bundle 3

- All-season floor mats
- Rear splash guards
- Cargo tray
- Hood edge deflector
- Door visors

Remote engine starter package

- Base unit
- Attachment
- Key FOB



HondaJet



Motorcycles



Side By Side



ASIMO



Honda Campus



Marine



Power Equipment



ATVs



The Power of Dreams, in all their forms.

At Honda, we're committed to being a leader in innovative thinking. It's part of everything we do, from the design of our vehicles to the way we work. We have a proud tradition of turning ideas into products and initiatives that help move and improve people's lives in every conceivable way. Today, our innovation manifests itself in many forms: our revolutionary Earth Dreams™ technology, the race-inspired performance of our motorcycles and automobiles, the world's most advanced humanoid robot, ASIMO, HondaJet, the fastest, highest flying and most fuel-efficient aircraft in its class, and the first full line of fuel-efficient, low-emission, 4-stroke outboard motors. We continually strive to do things others think can't be done, because true innovation comes from daring to dream.

Beyond dreaming up new products, Honda believes we have a responsibility to do everything we can to help preserve our planet. This belief is why we make significant efforts to help ensure preservation of the environment in all of our company's activities. It's why our head office in Markham, Ontario was designed and built to be LEED® (Leadership in Energy and Environmental Design) Gold Certified. It's why our Alliston, Ontario plant is ISO 14001 certified. And it's why Honda, along with our associates and families, has helped plant more than 100,000 trees in Canada over the last 9 years.

As we move forward, we will continue to honour our responsibility and tradition of turning innovative ideas into products that help make our world a better place. That's what we do. That's The Power of Dreams.

HIGHLIGHTS

- HondaJet
- Motorcycles
- Side by Side
- ASIMO
- Honda Campus
- Marine
- Power Equipment
- ATVs





We're Here. At Honda, assistance and support are always available. The team of trained technicians at your Honda dealership will help keep your vehicle in terrific shape. If you need more information or assistance relating to your warranty, call us at 1-888-9-HONDA-9. For all of the latest Honda information, including product specifications, pricing, photos and more, visit honda.ca. It has everything you need to "design" your Honda and personalize it with items from a list of quality accessories.

We're Ready to Help. When you purchase a new Honda, you automatically receive Honda Plus Roadside Assistance. This service is available to you, or any authorized driver, 24 hours a day, 7 days a week, anywhere in Canada or the continental United States. Coverage is for 3 years over an unlimited distance and includes a 24-hour toll-free Honda Plus Roadside Assistance number, mechanical breakdown towing, emergency roadside service and many other helpful features. Ask your dealer for more information.

Honda Plus Extended Warranty. Experience added protection with Honda Plus coverage that is behind you for the road ahead. With available coverage options of up to 8 years/200,000 km, you can choose the one that best suits your needs. With a plan this wide-ranging, the only thing that's uncertain is where it will take you.

Honda Financial Services. Whether you buy or lease a Honda, Honda Financial Services can assist you with the process. Ask your dealer which lease or purchase plan best suits your needs.

New Honda Vehicle Warranty. The Honda warranty protection makes Power Train components a minor concern with the Honda 5-year/100,000-km No Nonsense Warranty. In addition to the Honda 5-year/100,000-km No Nonsense Warranty, you and your new Honda are protected by a Honda 3-year/60,000-km Distributor's Warranty as well as an additional series of warranties for such items as emission controls, body corrosion and more.

Genuine Honda Accessories give you the opportunity to fine-tune your new Honda just how you like it. Whether you want to turn up the style, the versatility or the exclusivity, every accessory is designed and built to adhere to the strictest Honda standards. See your dealer for full details.

Genuine Honda Replacement Parts are made to the same exacting standards as original Honda components and are guaranteed by the Genuine Honda Parts Warranty. Using Genuine Honda Parts will help to maintain the quality, reliability and performance of your vehicle.

Always use seat belts and appropriate child seats. Children 12 and under are safest when properly restrained in a rear seat. Honda reminds you to properly secure all items stored in the cargo area.

Some of the technologies described in this brochure come with limitations. See owner's manual for complete details. Specifications, features, illustrations and equipment shown in this catalogue are based on the latest available information at the time of publication. Although descriptions are believed to be correct, accuracy cannot be guaranteed. Honda Canada Inc. reserves the right to make changes at any time, without notice or obligation, in colours, specifications, accessories, materials and models. Accessories and packages are subject to inventory availability. Honda reserves the right to terminate or change any of the services and/or features at any time, for any reason. Certain features require registration and may transmit to Honda and/or its providers a vehicle's location, operating conditions or other information that may be tied to the vehicle identification number (VIN) and can be combined to track a vehicle. For Honda's data use and privacy policy, see www.honda.ca/privacy. Some vehicles are shown with optional equipment. Some vehicles shown are U.S. models. Canadian specifications may vary. Bluetooth is a registered trademark of SIG Inc. HandsFreeLink is a trademark of Johnson Controls Technology. HDMI is a registered trademark of HDMI Licensing LLC. HD Radio™ is a proprietary trademark of iBiquity Digital Corp. Siri is a trademark of Apple Inc., registered in the U.S. and other countries. LEED® is a registered trademark of the U.S. Green Building Council, licensed to the Canada Green Building Council for use in Canada. Windows Media is a registered trademark of Microsoft Corporation. © 2015 Sirius XM Canada Inc. "SiriusXM", the SiriusXM logo, channel names and logos are trademarks of SiriusXM Radio Inc. and are used under licence. Honda, Fit, i-VTEC, Advanced Compatibility Engineering, ACE, Drive-by-Wire Throttle System, Earth Dreams, Eco Assist, HondaLink, Honda Satellite-Linked Navigation System, LaneWatch, Magic Seat, Maintenance Minder, Smartvent, VSA, The Power of Dreams, HondaJet and ASIMO are trademarks of Honda Motor Co., Ltd.

ENGINE	DX	LX	EX	EX-L NAVI
1.5-litre, 16-valve, Direct Injection, DOHC, i-VTEC® 4-cylinder	•	•	•	•
Horsepower @ rpm ¹	130 @ 6600	130 @ 6600	130 @ 6600	130 @ 6600
Torque (lb.-ft. @ rpm) ¹	114 @ 4600	114 @ 4600	114 @ 4600	114 @ 4600
Displacement (cc)	1498	1498	1498	1498
Emissions rating	Tier 2 Bin 5	Tier 2 Bin 5	Tier 2 Bin 5	Tier 2 Bin 5
Bore and stroke (mm)	73 x 89.5	73 x 89.5	73 x 89.5	73 x 89.5
Compression ratio	11.5:1	11.5:1	11.5:1	11.5:1
Drive-by-Wire Throttle System™	•	•	•	•
Eco Assist™ system	•	•	•	•
Recommended fuel	Regular	Regular	Regular	Regular

DRIVETRAIN	DX	LX	EX	EX-L NAVI
Continuously variable transmission (CVT)		Available	Available	Available
6-speed manual transmission (MT)	•	•	•	•
Steering wheel-mounted paddle shifters			CVT model	CVT model
ECON mode button		CVT model	CVT model	CVT model

BODY/SUSPENSION/CHASSIS	DX	LX	EX	EX-L NAVI
Wheels	15" with full covers	15" with full covers	16" alloy	16" alloy
All-season tires	P185/60 R15 84T	P185/60 R15 84T	P185/55 R16 83H	P185/55 R16 83H
Compact spare tire	T135/80 D15 99M	T135/80 D15 99M	T135/80 D15 99M	T135/80 D15 99M
Electric Power-Assisted Rack-and-Pinion Steering (EPS)	•	•	•	•
Stabilizer bars – front (mm)	25.4	25.4	25.4	25.4
MacPherson strut front suspension	•	•	•	•
Steering wheel turns, lock-to-lock	2.51	2.51	2.51	2.51
Torsion-beam rear suspension	•	•	•	•
Power-assisted, ventilated front disc/rear drum brakes	•	•	•	•
Unit-body construction	•	•	•	•

ACTIVE SAFETY	DX	LX	EX	EX-L NAVI
4-wheel Anti-lock Braking System ² (ABS)	•	•	•	•
Brake Assist	•	•	•	•
Electronic Brake-force Distribution (EBD)	•	•	•	•
Hill Start Assist ²	•	•	•	•
Vehicle Stability Assist ² (VSA®) with Traction Control	•	•	•	•

PASSIVE SAFETY	DX	LX	EX	EX-L NAVI
3-point front seat belts with automatic tensioning system	•	•	•	•
3-point rear seat belts	•	•	•	•
Next-Generation Advanced Compatibility Engineering™ (ACE™) body structure	•	•	•	•
Childproof rear door locks	•	•	•	•
Dual-stage, multiple-threshold front airbags (SRS)	•	•	•	•
Side curtain airbags with rollover sensor system	•	•	•	•
Smartvent™ side airbags	•	•	•	•
HondaLink™ Assist Automatic Emergency Response System ^{2,3,4}	•	•	•	•
Lower Anchors and Tethers for Children (LATCH)	•	•	•	•

DRIVER-ASSIST TECHNOLOGY	DX	LX	EX	EX-L NAVI
Honda LaneWatch™ blind spot display ²			•	•

EXTERIOR	DX	LX	EX	EX-L NAVI
Body-coloured door handles		•	•	•
Body-coloured rear roofline spoiler		•	•	•
Front splash guards	•	•	•	•
Folding door mirrors	•	•	•	•
Heated power door mirrors including expanded view driver's mirror	Black	Body-coloured	Body-coloured	Body-coloured
Hood insulator	•	•	•	•
Integrated fog lights	•	•	•	•
LED brake lights	•	•	•	•
Multi-reflector halogen headlights	With auto-off	With auto-off	With auto-on/off	With auto-on/off
One-touch power moonroof with tilt feature			•	•
Rear window defroster	•	•	•	•
Intermittent windshield wipers	•	•	•	•
Intermittent rear window wiper/washer	•	•	•	•
Roof-mounted antenna	•	•	•	•
Mirror-integrated LED turn indicators				•

COMFORT & CONVENIENCE	DX	LX	EX	EX-L NAVI
12-volt power outlet	1	2	2	2
Adjustable tilt and telescopic steering column	•	•	•	•
Air conditioning with air-filtration system		•	•	•
Automatic climate control with air-filtration system				•
Cargo area light	•	•	•	•
Cargo area tie-down anchors	•	•	•	•
Cargo cover			•	•
Carpet floor mats	•	•	•	•
Driver's and front passenger's vanity mirrors	•	•	•	•
Front door-pocket storage bins	•	•	•	•
Fuel consumption display	•	•	•	•
HandsFreeLink™-bilingual Bluetooth® wireless mobile phone interface ^{2,3}	•	•	•	•
Display Audio System ³ with HondaLink™ ^{2,3} Next Generation and Honda Satellite-Linked Navigation System™ ^{2,3} with bilingual Voice Recognition				•

COMFORT & CONVENIENCE	DX	LX	EX	EX-L NAVI
Immobilizer theft-deterrent system	•	•	•	•
Map lights	•	•	•	•
Multi-angle rearview camera ²	•	With dynamic guidelines	With dynamic guidelines	With dynamic guidelines
One-touch turn signals	•	•	•	•
Passenger-side seatback pocket		•	•	•
Power door locks	•	•	•	•
Power windows	•			
Power windows with auto-up/down driver's window		•	•	•
Proximity key entry system with pushbutton start				•
Remote entry system with security system	•	•	•	•
Maintenance Minder™ system	•	•	•	•
Steering wheel-mounted cruise control	•	•	•	•
Tachometer	•	•	•	•

SEATING & TRIM	DX	LX	EX	EX-L NAVI
60/40 Split 2nd-Row Magic Seat®	•	•	•	•
Adjustable front seat head restraints	•	•	•	•
Centre console with armrest and storage compartment		•	•	•
Driver's seat with manual height adjustment	•	•	•	•
Heated front seats		•	•	•
Leather-trimmed seating surfaces				•
Leather-wrapped steering wheel			•	•
Leather-wrapped shift knob				•
Reclining front and rear seatbacks	•	•	•	•
Seating capacity	5	5	5	5

ENTERTAINMENT	DX	LX	EX	EX-L NAVI
160-watt AM/FM/CD audio system with MP3/Windows Media®	•	•		
Audio playback capability and 4 speakers				
180-watt AM/FM/CD audio system with MP3/Windows Media®			•	•
Audio playback capability and 6 speakers				
Bluetooth® Streaming Audio ^{2,3}	•	•	•	•
5-inch colour LCD screen	•			
Display Audio System ² with HondaLink™ ^{2,3} Next Generation		•	•	Including Navigation ^{2,5}
HDMI® (High-Definition Multimedia Interface) input jack ³		•	•	•
HD Radio™ ⁶				•
Illuminated steering wheel-mounted audio controls		•	•	•
MP3/auxiliary input jack	•			
Siri Eyes Free compatibility ^{2,3}		•	•	•
SiriusXM™ ⁷				•
Text message function ^{2,3}		•	•	•
USB device connector ³	1	2	2	2

FUEL ECONOMY* (L/100 KM)	DX	LX	EX	EX-L NAVI
Manual transmission (City/Hwy/Combined)	8.1/6.4/7.3	8.1/6.4/7.3	8.1/6.4/7.3	8.1/6.4/7.3
Continuously variable transmission (CVT) (City/Hwy/Combined)	NA	7.0/5.7/6.4	7.3/6.1/6.8	7.3/6.1/6.8

DIMENSIONS	DX	LX	EX	EX-L NAVI
Cargo volume – rear seat up/down (L)	470/1492	470/1492	470/1492	470/1492
Curb weight – MT/CVT (kg)	1131/NA	1143/1157	1170/1196	1177/1201
Fuel tank capacity (L)	40	40	40	40
Ground clearance – no-load/full-load (mm)	127/102	127/102	127/102	127/102
Headroom – front/rear (mm)	1003/953	1003/953	964/954	964/954
Height (mm)	1524	1524	1524	1524
Hip room – front/rear (mm)	1308/1145	1308/1145	1308/1145	1308/1145
Legroom – front/rear (mm)	1052/997	1052/997	1052/997	1052/997
Length (mm)	4064	4064	4064	4064
Passenger volume (L)	2710	2710	2656	2656
Shoulder room – front/rear (mm)	1393/1336	1393/1336	1393/1336	1393/1336
Track – front/rear (mm)	1481/1473	1481/1473	1476/1466	1476/1466
Turning radius – curb-to-curb (m)	5.3	5.3	5.3	5.3
Wheelbase (mm)	2530	2530	2530	2530
Width (mm)	1694	1694	1694	1694
Width – including door mirrors/mirrors folded (mm)	2040/1821	2040/1821	2040/1821	2040/1821

- Horsepower and torque calculations reflect SAE net, Rev. 08/04, SAE J1349 procedures.
- None of the features we describe are intended to replace the driver's responsibility to exercise due care while driving. Drivers should not use handheld devices or operate certain vehicle features unless it is safe and legal to do so. Some features have technological limitations. For additional feature information, limitations and restrictions, please visit www.honda.ca/disclaimers and refer to the vehicle's Owner's Manual.
- Only compatible with certain devices and operating systems. Cellular data and/or voice charges may apply, including roaming charges and/or other amounts charged by your wireless carrier.
- Operation requires wireless mobile phone to be paired with the vehicle. Operation is dependent upon cellular data and/or voice connection availability and GPS satellite signal reception.
- Map database covers major metropolitan areas in Canada and the 48 contiguous U.S. states.
- Coverage varies by market.
- Only available in certain areas. Includes a no-charge trial of three months.
- Estimated fuel economy based on Government of Canada's 5-cycle testing method. Your actual fuel consumption will vary based on driving habits and other factors – use for comparison only. For more information on 5-cycle testing, visit <http://vehicles.nrcan.gc.ca>.

Trims

FIT DX

KEY FEATURES:

- 130-hp,¹ 1.5-litre, 16-valve, Direct Injection, DOHC, i-VTEC[®] 4-cylinder engine
- 15" wheels with full covers
- 4-wheel Anti-lock Braking System²
- Electronic Brake-force Distribution (EBD)
- Brake Assist
- 6-speed manual transmission (MT)
- 60/40 Split 2nd-Row Magic Seat[®]
- 160-watt AM/FM/CD audio system with MP3/Windows Media[®] Audio playback capability and 4 speakers
- 5-inch colour LCD screen
- 12-volt power outlet
- Adjustable tilt and telescopic steering column
- Bluetooth[®] Streaming Audio^{2,3}
- Cargo area light
- Driver's and front passenger's vanity mirrors
- Dual-stage, multiple-threshold front airbags (SRS)
- Side curtain airbags with rollover sensor system
- Smartvent[™] side airbags
- Eco Assist[™] system
- Front door-pocket storage bins
- Fuel consumption display
- HandsFreeLink[™]-bilingual Bluetooth[®] wireless mobile phone interface^{2,3}
- Heated power door mirrors including expanded view driver's mirror
- Hill Start Assist²
- Immobilizer theft-deterrent system
- Intermittent rear window wiper/washer
- Intermittent windshield wipers
- LED brake lights
- Electric Power-Assisted Rack-and-Pinion Steering (EPS)
- Multi-angle rearview camera²
- Next-Generation Advanced Compatibility Engineering[™] (ACE[™]) body structure
- Power door locks
- Power windows
- Rear window defroster
- Remote entry system with security system
- Maintenance Minder[™] system
- USB device connector³
- Vehicle Stability Assist² (VSA[®]) with Traction Control

FIT LX

ADDS TO OR REPLACES DX FEATURES:

- 12-volt power outlet (2)
- Air conditioning with air-filtration system
- Available continuously variable transmission (CVT)
- ECON mode button (CVT model)
- Body-coloured heated power door mirrors including expanded view driver's mirror
- Body-coloured rear roofline spoiler
- Centre console with armrest and storage compartment
- Display Audio System² with HondaLink^{™2,3} Next Generation
- HDMI[®] (High-Definition Multimedia Interface) input jack³
- Heated front seats
- HondaLink[™] Assist Automatic Emergency Response System^{2,3,4}
- Power windows with auto-up/down driver's window
- Siri Eyes Free compatibility^{2,3}
- Steering wheel-mounted cruise control
- Text message function^{2,3}
- USB device connector (2)³

FIT EX

ADDS TO OR REPLACES LX FEATURES:

- 16" alloy wheels
- 180-watt AM/FM/CD audio system with MP3/Windows Media[®] Audio playback capability and 6 speakers
- Auto-on/off multi-reflector halogen headlights
- Cargo cover
- Honda LaneWatch[™] blind spot display²
- Integrated fog lights
- Leather-wrapped steering wheel
- One-touch power moonroof with tilt feature
- Steering wheel-mounted paddle shifters (CVT model)

FIT EX-L NAVI

ADDS TO OR REPLACES EX FEATURES:

- Automatic climate control with air-filtration system
- Display Audio System² with HondaLink^{™2,3} Next Generation and Honda Satellite-Linked Navigation System^{™2,5} with bilingual Voice Recognition
- HD Radio^{™6}
- Leather-trimmed seating surfaces
- Leather-wrapped shift knob
- Mirror-integrated LED turn indicators
- Proximity key entry system with pushbutton start
- SiriusXM^{™7}

Exterior & Interior Colours

FIT	DX	LX	EX	EX-L NAVI
Milano Red	Black Fabric	Black Fabric	Black Fabric	Black Leather
Modern Steel Metallic	Black Fabric	Black Fabric	Black Fabric	Black Leather
White Orchid Pearl	Black Fabric	Black Fabric	Black Fabric	Black Leather
Crystal Black Pearl	Black Fabric	Black Fabric	Black Fabric	Black Leather
Aegean Blue Metallic	Black Fabric	Black Fabric	Black Fabric	Black Leather
Mystic Yellow Pearl			Black Fabric	Black Leather

1. Horsepower and torque calculations reflect SAE net, Rev. 08/04, SAE J1349 procedures.
 2. None of the features we describe are intended to replace the driver's responsibility to exercise due care while driving. Drivers should not use handheld devices or operate certain vehicle features unless it is safe and legal to do so. Some features have technological limitations. For additional feature information, limitations and restrictions, please visit www.honda.ca/disclaimers and refer to the vehicle's owner's manual.
 3. Only compatible with certain devices and operating systems. Cellular data and/or voice charges may apply, including roaming charges and/or other amounts charged by your wireless carrier.
 4. Operation requires wireless mobile phone to be paired with the vehicle. Operation is dependent upon cellular data and/or voice connection availability and GPS satellite signal reception.
 5. Map database covers major metropolitan areas in Canada and the 48 contiguous U.S. states.
 6. Coverage varies by market.
 7. Only available in certain areas. Includes a no-charge trial of three months.