

# The New Honda FR-V 2004



At Honda, belief is everything.

It's the belief that we have the power to change things.

To make the ordinary extraordinary.

To question the status quo.

To take a boundary and extend it.

With the new FR-V, we've pushed things even further. Our aim was to create a family car that cleverly combines versatility with quality and style. Outside it's refined and sporty. Inside, its unique seating creates a more adaptable, social space. The perfect travelling environment, no matter where life takes you.

## CONTENTS

Exterior	3
Interior	7
Safety	23
Performance	29
Attention to detail	35
Grades	40
Specification	43
Options	47
Finance	53
Aftercare	55
Environment	57
Innovation	59
Honda Range	61
Glossary and Colours	63



**WhatMPV**  
**-4x4?**

MPV of the Year

Model shown is FR-V 2.0 i-VTEC Sport



Model shown is FR-V 2.0 i-VTEC Sport

## ?Why compromise on style

Immediately, there's something different about the FR-V. The compact and streamlined exterior belies the fact that there's more than enough room inside for the whole family plus whatever you need to carry.

Our designers were determined to move away from the expectation of what a multi-purpose vehicle should look like. We wanted to work out what people need, what makes driving a pleasurable, less stressful experience. So we concentrated on all the little

things that make family life easier, then carefully placed them into a vehicle that was elegant, efficient, understated and attractive.

But the real beauty is in the detail. Like the indicator repeaters stylishly incorporated into the door mirrors to make you more visible to other drivers. That sporty under-spoiler, and those deep, curving bumpers. It's all about cleverly balancing versatility with quality.

## ?Why stick to the rules

At Honda, we don't. We prefer to pursue our vision, trust our inspiration. The unique and sporty shape of the FR-V originated with the idea that the car should look strong, agile and responsive. Every line and curve was designed with that initial thought in mind. The result is a CMPV that looks like no other. Its solid appearance is due to its low centre of gravity, which gives it stability, agility and

better road-handling. Its expansive rear light clusters and the brake light built into the rear spoiler make your manoeuvres clear to other road users. And the innovative tailgate, with its specially designed windscreen wiper to hug the contours of the curved glass, ensures maximum storage space without losing the stylish and compact look.







Model shown is FR-V 2.0 i-VTEC Sport

## ?How do you relax

At Honda we've studied the habits of car users for years. We asked ourselves what makes them feel relaxed, confident. What they want when it comes to accessibility. We wanted to make the driving experience effortless. So we've redesigned the dashboard to make it both easy to use and highly attractive, meaning you can drive in comfort and style. Its flat, inset design gives it a modern and dynamic look. It also allows plenty of room for front-seat travellers. And we've thought of all sorts of

features that make your journey more enjoyable. There are three drinks holders hidden in there for the three front passengers. There's plenty of storage space where you can throw wallets, sunglasses and loose change for the parking meter. And all of this can be done in an intelligent climate-controlled environment that puts each of the six passengers at ease.

## Isn't it better to be in control

In the FR-V, every piece of dashboard technology is located close to hand, easy to operate and designed with convenience and simplicity in mind. The perfect driving position can be easily found using the fully adjustable driver's seat and the tilting, telescopic steering column. The dash-mounted gearshift is just a short distance from your hand on the wheel, making gear changing easier and safer. The handbrake's on the dash too and it's fully retractable and cushioned, so there's no chance of a clambering child releasing it. Controls for the all-round

electric windows are just to the right of the steering wheel. The cruise controls and audio controls are mounted on the wheel itself, so you can keep your hands where they should be. And to keep you firmly in the driving seat there's an array of information available via crystal-clear dashboard displays. A quick glance and you know the ambient temperature, and your average fuel economy. It even tells you how many miles you have left before you need to fill up, helping you plan when on the move, especially on long journeys.





Model shown is FR-V 2.0 i-VTEC SE

## ?How would you prefer to travel

Our designers thought long and hard about what makes a journey more enjoyable, what people want to get out of a trip in the car. We wanted to eradicate the stress factor from travelling. One of the solutions was the FR-V's seating arrangement. There's room for three in the front and three in the back - and that's full-sized seats, not half-spaces where you find yourself squashed in between

your fellow passengers. This innovative and adaptable layout means that six people can sit in complete comfort with plenty of shoulder space and legroom. It makes the interior of the car a social space. A fun space. And the process of getting from A to B becomes far more pleasurable. After all, why should you be separated from your loved ones when you go on a journey?





Model shown is FRV 2.0 i-VTEC SE

## ?Ever fancied a change of scenery

Humans are spontaneous creatures. Sometimes we even take ourselves by surprise. One minute we're sitting down at home, the next we're jumping into the car with the kids and their swim stuff and heading for the beach. At Honda we create everything with people in mind. That's why the FR-V is designed to be just as spontaneous as you are. Take the seats. You can effortlessly shuffle them around however you want. Slide the middle ones backwards or forwards - the front centre seat moves 270mm, its partner in the back 170mm. And each of the back seats folds away entirely, flat to the floor and out of the way. So you don't have to remove seats and clutter up your house or garage in order to create space in your car. There are loads of different variations to suit your travel arrangements. And with a full six people on board, the FR-V still has a 439 litre boot capacity - plenty of room for all the luggage. Isn't it time you started planning your next holiday?



Tonneau cover comes as standard on your FR-V.



Model shown is FR-V 2.0 i-VTEC SE

?Where does it all fit in

Families very rarely travel light. There's always the excess baggage like toys, books, CDs, snacks, drinks, maps, sunglasses and mobiles. This is where the FR-V's front centre seat comes into its own. It's one of the two seats you can move backwards and forwards, giving you plenty of shoulder space and leg room and it has plenty of tricks up its sleeve. Flip open the front half of the seat base to reveal a generous storage space, and there's more storage in the pull out tray underneath it. Using an easy to reach handle it folds down to create armrests and a very useful flat surface. Make it a picnic table, somewhere to play board games, or simply a storage tray. Perfect for those things you'll need handy when you're on the move.



A handy tray can be pulled out from underneath the front centre seat.



Seat base of front centre seat flips open to reveal more storage.



Optional seat back tray.



## ?Where does it all fit in

The FR-V looks after its passengers as much as the driver. Because if everyone's happy in the back, the driver can get on with the job in hand. Our designers placed safety and comfort at the top of the priority list and made sure that no one gets a raw deal. The three individual back seats are fully accommodating, so no one gets squashed in and there's no compromise on space. ISOFix mounting points on the rear outer seats ensure maximum safety. There's no shortage of neat storage space for all the bits

and pieces essential for a long journey. And there are plenty of clever options like privacy glass and window blinds for extra protection against the sun. Folding seat-back trays that make sturdy tables for backseat passengers. Plus an optional in-vehicle entertainment system with a drop-down DVD screen in the back. Everything to keep the kids happy. It's all part of what makes the FR-V a family car that everyone in the family will enjoy travelling in.



Model shown is FR-V 2.0 i-VTEC Sport

## ?Wondering how you're going to fit it all in

Our designers know that a car isn't just for driving the family about. There are always times when your vehicle is called on for special duties. Like moving a fridge. Or transporting a teenager's possessions from one digs to the next. That's why the back seats can each be folded away completely flat, creating volumes of space in any combination. Thanks to easily accessible

handles you can reach from the front or the back, it's done very quickly and takes no effort at all. With the FR-V, there's no such thing as an awkward load. You can be as spontaneous as you like. And with all that adaptable space you won't have to leave anything behind or struggle in the process.

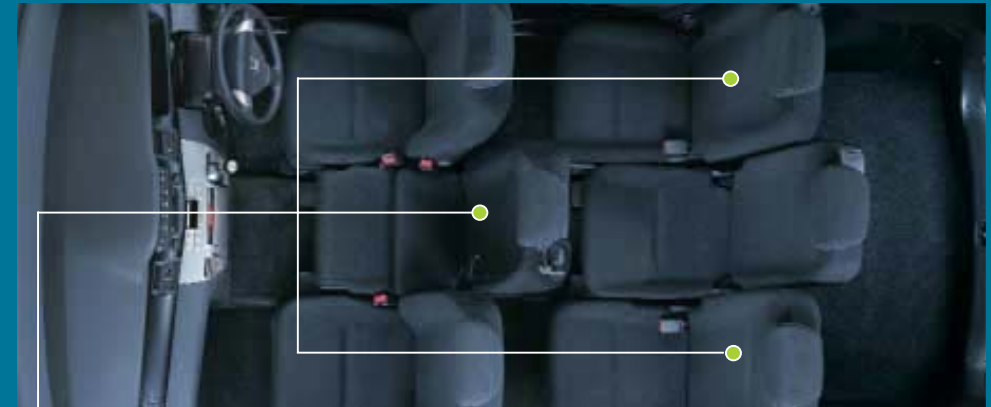




The centre front seat with its ISOFix anchoring is the ideal place for the youngest member of the family to travel, being within easy reach so you don't have to twist around to check on the baby. Honda recommend the seat is moved to its rear most position when childseat is in place.

## ?Ever heard of a car being too safe

Neither have we - and we know that most car buyers put safety at the top of the priority list when looking at family cars. Honda treats the issue with just as much importance, which is why the FR-V comes with our unique set of safety features as standard. Take a look at the list. Anti-lock brakes keep the car in control even under the hardest braking, and Electronic Brakeforce Distribution (EBD) transfers additional braking power to the rear wheels, ensuring straight-line braking in all conditions. There are three-point seatbelts for every seat, and additional security is provided by ISOFix mounting points on the



An ISOFix anchorage system is fitted to both the outside rear seats and the centre front seat.



The front passenger airbag has a larger capacity to protect the two front passengers.

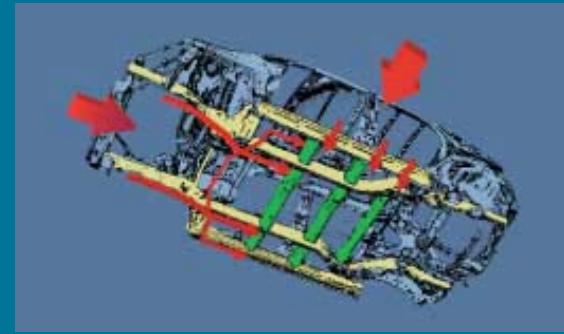


Curtain side airbags provide additional protection from side impacts.



3 point pre-tensioning seat belts are fitted to all front seats.

centre front seat and the two outer rear seats. Airbags are fitted throughout, the front passenger airbag having a larger capacity to protect both front passengers. In the event of a collision, the chassis and tailgate deflect impact energy away from the passengers. And to make driving an even more secure experience, we've put all the driver's controls within easy reach, some of them on the steering wheel itself, which means that you rarely have to take your hands off the wheel.



The FR-V's chassis is designed to help disperse impact loads in the event of a collision, with all round crumple zones and a heavily reinforced rear tailgate to deflect impact energy away from passengers.

## ?How do you get to see everything from every angle

Car accidents are unpredictable and each one is different. This is why we wanted to be able to put our cars through the most rigorous safety tests and study the outcome of thousands of different scenarios. But we couldn't find anywhere to do this that met our standards and requirements - so we built our own facility. It's the largest indoor crash test centre in the world, and it enables us to test our vehicles from all possible angles. Because anything can happen in real life. But as well as the cars we wanted to look at the people involved in

accidents - how we could ensure the safety of pedestrians as well as passengers. That's why we developed the POLAR II pedestrian crash test dummy. The world's most sophisticated unit of its kind, it's the closest anyone has come to replicating the real reactions of the human body in a crash scenario. And it's helped us to understand exactly what goes on in those critical few seconds. We used that knowledge in designing the FR-V's front bumper, bonnet, wipers and fenders, minimising the risk of injury and making sure that people always come first.



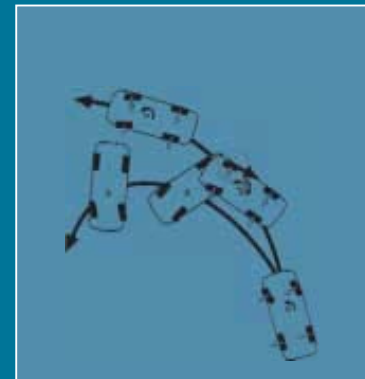
We test all our cars from every angle, because that's the way it happens in real life.



POLAR II



Honda's own advanced crash test centre, featuring the world's largest indoor crash test area.



VSA controlling oversteer.



VSA controlling understeer.

Our Vehicle Stability Assist system (VSA) helps you keep control during sharp cornering, acceleration, or if you have to turn quickly.





## ?Ever found yourself having to think outside the box

For generations, Honda has remained at the forefront of auto technology by constantly looking at new options and taking a fresh and innovative approach to problems. We don't limit our imaginations when it comes to creating. We set out to design the perfect vehicles for our customers, whatever their needs. This philosophy has led us to make some of the world's most efficient and powerful engines. Not just cars, but motorbikes, speedboats, and Formula 1 cars, even the new HF118 engine powering the HondaJet. With all that

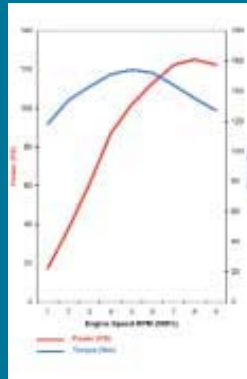


heritage, it's no wonder that our latest creation gives dynamic performance combined with total safety. Its intelligent engine makes sure that power is applied exactly when and where it's needed, and the suspension ensures a road-hugging low centre of gravity and with that comes maximum stability.





### 1.7i VTEC

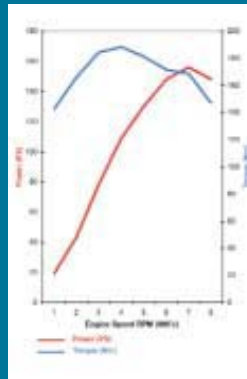


?What lies at the heart of all this

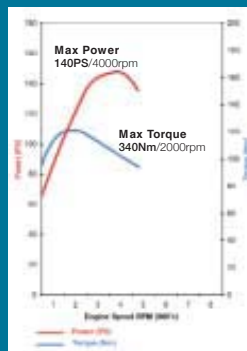
The revolutionary VTEC petrol engine is undoubtedly the beating heart of the FR-V. Originally developed for our Formula 1 racing programme, the engine was introduced into standard road cars in 1987. Since then over 13 million units have been produced. The VTEC - and its younger cousin the i-VTEC - has two distinct personalities. For acceleration, the engine alters its valves' timings at 4,500 rpm, providing a surge in power just when you need it. And when you're cruising, it keeps the mix of fuel and air at optimum levels to maintain power and an effortless, steady speed. The i-VTEC even adjusts the timing according to your speed and load, providing power where it's needed while keeping an eye on fuel consumption. Then there's the FR-V's transmission - the 5 and 6 speed manual gearboxes are supple and easy to control, and the clutch is effortless and responsive. Put it all together and you'll always have a smooth ride.



### 2.0 i-VTEC



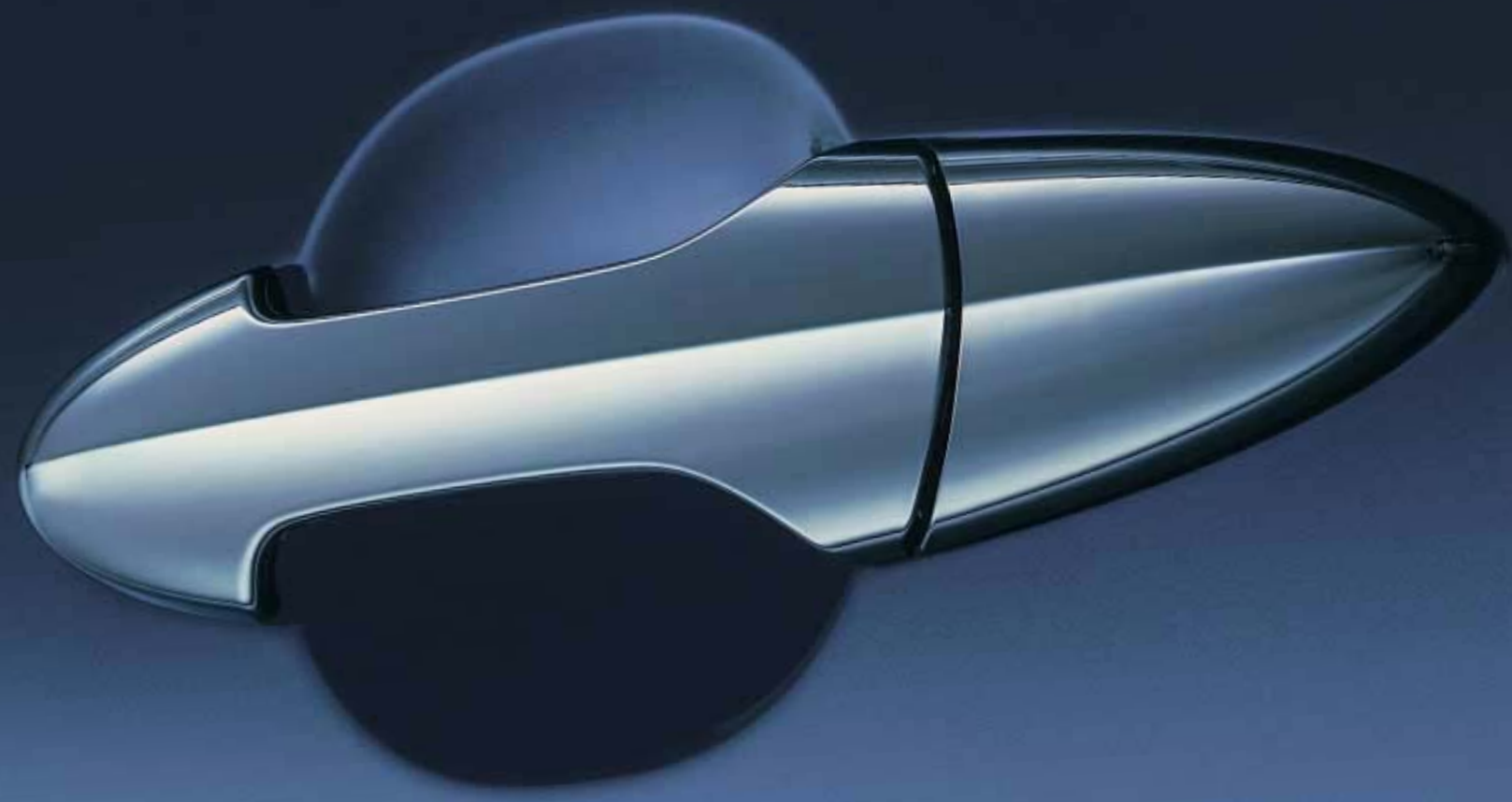
### 2.2 i-CTDi



The FR-V diesel engine is currently in development, the torque graph above shows figures for the Accord diesel which has already proved incredibly successful.

?Are you ready for a new generation of diesel engine

At Honda, we know that good things come to those who wait. That's why we've bided our time while our competitors have struggled against the diesel engine's reputation as being noisy and smelly. We realised that trying to improve on the existing model was useless. We had to start from scratch. We had to develop something totally different to what had come before. After a lot of radical thinking we came up with the i-CTDi, a lightweight 2.2 litre turbodiesel engine. Made in a revolutionary semi-solid process that gives it unparalleled stiffness and strength, its construction means it's quieter and more refined than any other diesel. Not only that, but it delivers all the performance, economy and driving satisfaction that customers expect from a Honda engine. Available in 2005, it'll be one of the cleanest in existence, meeting all the Euro IV emission standards for 2006. It's this combination of refinement, power, economy and low emissions that makes the i-CTDi a quality diesel engine distinct from all the competition.





The remote audio controls are mounted on the steering wheel for greater convenience and safety.



Useful drink holders for the three front occupants fold neatly away when not in use.



The lockable glove box has plenty of room for maps or personal belongings.



Generous door pockets front and rear provide handy additional storage space.



Seatback pockets are standard for those long journey essentials.



The gearshift is conveniently located within the dash.



Keep your possessions covered, with the three-part tonneau cover, allowing all three seats individual movement.



Remote central locking and immobiliser are all neatly concealed in the ignition key.



Convenient, strong tie-down hooks are useful integrations into the load area.



Digital climate control, allows you to select the temperature you desire and adds a further touch of luxury to the cabin.



Cruise control, perfect for long distance journeys, is available on the Sport model.



Passengers can operate individual windows, whilst all controls are within easy reach for the driver, including locking functions to isolate all windows.



An integrated handle on the inside of the tailgate keeps your hands clean when closing it.



To provide a flatter floor and greater legroom, the handbrake is ergonomically designed to fit snugly under the dashboard.



Even the door handles are treated with a high degree of design consideration to enhance the good looks as standard.



Indicator repeaters are placed within the door mirrors across the range as standard for high-visibility and superior aerodynamics.



Alloy wheels standard on the Sport further enhance the impressive looks and handling. Optional alloy wheels available for the SE are featured on page 52.



Large high-intensity headlamps wrap around the nose to brighten the road ahead, foglights shown are optional on the SE and standard on the Sport.

### 1.7i VTEC SE



Available with all exterior colour options.  
For colour palette, please see back of brochure.



2.0 i-VTEC SE



Available with all exterior colour options.  
For colour palette, please see back of brochure.



2.0 i-VTEC Sport



Available with all exterior colour options.  
For colour palette, please see back of brochure.



	1.7i VTEC SE Manual	2.0 i-VTEC SE Manual	2.0 i-VTEC Sport Manual
<b>Engine</b>			
Type	SOHC VTEC	DOHC i-VTEC	DOHC i-VTEC
Displacement (cc)	1668	1998	1998
Maximum power (PS @ rpm)	125@6300	150@6500	150@6500
Maximum torque (Nm @ rpm)	154@4800	192@4000	192@4000
Maximum torque (lb-ft @ rpm)	114@4800	142@4000	142@4000
Fuel type	Petrol	Petrol	Petrol
Recommended fuel rating (Research Octane Number - RON)	95 RON Minimum	95 RON Minimum	95 RON Minimum
<b>Fuel Economy<sup>†</sup></b>			
Urban (l/100km)	9.3	11	11
Urban (mpg)	30.4	25.7	25.7
Extra urban (l/100km)	6.5	6.9	6.9
Extra urban (mpg)	43.5	40.9	40.9
Combined (l/100km)	7.5	8.4	8.4
Combined (mpg)	37.7	33.6	33.6
CO2 (g/km)	179	199	199
Potential range per tank (miles)*	481	429	429
<b>Transmission</b>			
5 Speed manual	●	-	-
6-speed manual	-	●	●
<b>Performance</b>			
Acceleration 0-62 mph (secs)	12.3	10.5	10.5
Maximum speed (mph)	112	120	120
<b>Weights and Capacities</b>			
Boot capacity to window seat up (litres, VDA method)	439	439	439
Boot capacity to window seat down (litres, VDA method)	1049	1049	1049
Fuel tank (litres)	58	58	58
Kerb weight (kg)	1397	1457	1447
Turning circle - kerb to kerb (m)	10.4	10.4	10.4
Maximum towing weight with brakes (kg)**	1500	1500	1500
Maximum towing weight without brakes (kg)**	500	500	500
Maximum trailer nose weight (kg)	90	90	90
Maximum roof load (kg)	80	80	80
<b>Wheels</b>			
Wheels	15" steel	16" steel	16" alloy
Spare wheel	space saver	space saver	space saver
<b>Instruments and Controls</b>			
Cruise control	-	-	●
Digital clock (built into audio system)	●	●	●
Digital odometer (A / B trip)	●	●	●
Audible headlight on reminder	●	●	●
Illuminated ignition switch	●	●	●
Internally adjustable headlight height	●	●	●
Front interior welcome light	●	●	●
Fuel filler release	●	●	●
Tachometer (rev counter)	●	●	●
External temperature gauge (built into odometer)	●	●	●
Digital fuel consumption display	●	●	●

**Safety**

Dual front Supplemental Restraint System (SRS) airbags	●	●	●
Dual side Supplemental Restraint System (SRS) airbags	●	●	●
Dual curtain Supplemental Restraint System (SRS) airbags - front and rear	●	●	●
Anti-lock Braking System (ABS)	●	●	●
Electronic Brakeforce Distribution (EBD)	●	●	●
Emergency Brake Assist	●	●	●
High level rear brake light	●	●	●
Side impact protection beams	●	●	●
Front seat belt pre-tensioners	●	●	●
Height adjustable front seat belts	●	●	●
6 x 3 point seat belts	●	●	●
ISOFix childseat restraint mechanism	●	●	●
Dual tone horn	●	●	●
Front ventilated disc brakes	●	●	●
Rear disc brakes	●	●	●
Vehicle Stability Assist (VSA)	-	●	●
Front head restraints	●	●	●
Rear central head restraint	●	●	●
Rear outer head restraints	●	●	●
<b>Security</b>			
Rolling code ECU engine immobiliser	●	●	●
Honda Superlocks (deadlocks)	●	●	●
Externally visible Vehicle Identification Number (VIN)	●	●	●
Remote keyless entry	●	●	●
Central locking	●	●	●
High security integrated audio	●	●	●
Tonneau cover	●	●	●
Lockable glovebox	●	●	●
Interior and perimeter monitoring alarm (CAT 1)	●	●	●
<b>Exterior</b>			
Body colour bumpers	●	●	●
Body colour door mirrors	●	●	●
Black side protection strips	●	●	-
Body colour side protection strips	-	-	●
Intermittent rear windscreen wiper	●	●	●
Roof mounted aerial	●	●	●
Electric adjustable and heated door mirrors	●	●	●
Electrically retractable door mirrors	-	-	●
Front foglights	○	○	●
Mirror integrated indicators	●	●	●

	1.7i VTEC SE Manual	2.0 i-VTEC SE Manual	2.0 i-VTEC Sport Manual
<b>Safety</b>			
Dual front Supplemental Restraint System (SRS) airbags	●	●	●
Dual side Supplemental Restraint System (SRS) airbags	●	●	●
Dual curtain Supplemental Restraint System (SRS) airbags - front and rear	●	●	●
Anti-lock Braking System (ABS)	●	●	●
Electronic Brakeforce Distribution (EBD)	●	●	●
Emergency Brake Assist	●	●	●
High level rear brake light	●	●	●
Side impact protection beams	●	●	●
Front seat belt pre-tensioners	●	●	●
Height adjustable front seat belts	●	●	●
6 x 3 point seat belts	●	●	●
ISOFix childseat restraint mechanism	●	●	●
Dual tone horn	●	●	●
Front ventilated disc brakes	●	●	●
Rear disc brakes	●	●	●
Vehicle Stability Assist (VSA)	-	●	●
Front head restraints	●	●	●
Rear central head restraint	●	●	●
Rear outer head restraints	●	●	●
<b>Security</b>			
Rolling code ECU engine immobiliser	●	●	●
Honda Superlocks (deadlocks)	●	●	●
Externally visible Vehicle Identification Number (VIN)	●	●	●
Remote keyless entry	●	●	●
Central locking	●	●	●
High security integrated audio	●	●	●
Tonneau cover	●	●	●
Lockable glovebox	●	●	●
Interior and perimeter monitoring alarm (CAT 1)	●	●	●
<b>Exterior</b>			
Body colour bumpers	●	●	●
Body colour door mirrors	●	●	●
Black side protection strips	●	●	-
Body colour side protection strips	-	-	●
Intermittent rear windscreen wiper	●	●	●
Roof mounted aerial	●	●	●
Electric adjustable and heated door mirrors	●	●	●
Electrically retractable door mirrors	-	-	●
Front foglights	○	○	●
Mirror integrated indicators	●	●	●

● standard ○ optional - not available

<sup>†</sup> **Fuel consumption.** These are the results of the fuel consumption test conducted by the Department of Transport. This test is designed to give a realistic indication of on-road fuel consumption.

\* Calculated using a combined cycle. Results will vary according to driving conditions.

\*\* **Maximum towing weights** are based on the ability of the car, with two occupants of 75kg each, to restart on a 12% gradient at sea level. At altitudes in excess of 1500 metres, engine output may drop with a reduction in towing capability. Extra weight, such as additional passengers or luggage, should also be deducted from the maximum towing weight.

	1.7i VTEC SE Manual	2.0 i-VTEC SE Manual	2.0 i-VTEC Sport Manual
<b>Comfort and Convenience</b>			
Tilt and telescopic steering wheel adjustment	●	●	●
Climate controlled air conditioning with pollen filter	●	●	●
Driver vanity mirror with lid in sunshade	●	●	●
Passenger vanity mirror with lid in sunshade	●	●	●
Drivers foot rest	●	●	●
Front cupholders	●	●	●
Rear cupholders	●	●	●
Luggage tie down rings	●	●	●
Driver seatback pocket	●	●	●
Passenger seatback pocket	●	●	●
Power assisted steering	●	●	●
Front electric windows	●	●	●
Rear electric windows	●	●	●
Rear 12V power outlet	●	●	●
Sunroof (comes with privacy glass)	-	-	○
<b>Seating</b>			
33:33:33 split folding second row seats	●	●	●
Centre front arm rest / table / storage	●	●	●
Driver and passenger seat back pocket	●	●	●
Sliding centre front seat with 3-point seatbelt	●	●	●
Sliding centre second row seat with 3-point seatbelt	●	●	●
Six seats seating capacity	●	●	●
Drivers seat height adjustment	●	●	●
Rear seat independent fold down	●	●	●
One motion fold flat rear seat	●	●	●
<b>In Car Entertainment***</b>			
Rear speakers	●	●	●
Front speakers	●	●	●
Tweeters	●	●	●
Stereo CD tuner with RDS	●	●	●
Satellite Navigation (comes with privacy glass)	-	-	○
RES System - IVES	○	○	○
Front outer seatback table	○	○	○
Floor Carpet	○	○	○
<b>Options**</b>			
<b>City Pack 1:</b> Floor carpet and parking sensor	○	○	○
<b>City Pack 2:</b> Floor carpet, front bumper trim and rear bumper trim	○	○	○
<b>Active Pack:</b> Floor carpet, trunk tray, roof rails, seatback table, cross bars, rear mud guard, front mud guard	○	○	○
<b>Style Pack:</b> Floor carpet, front skirt, rear skirt and side skirts	○	○	○

● standard ○ optional - not available

\*\*\*For a full listing of accessories please see price list or your local Honda dealer



1810 mm



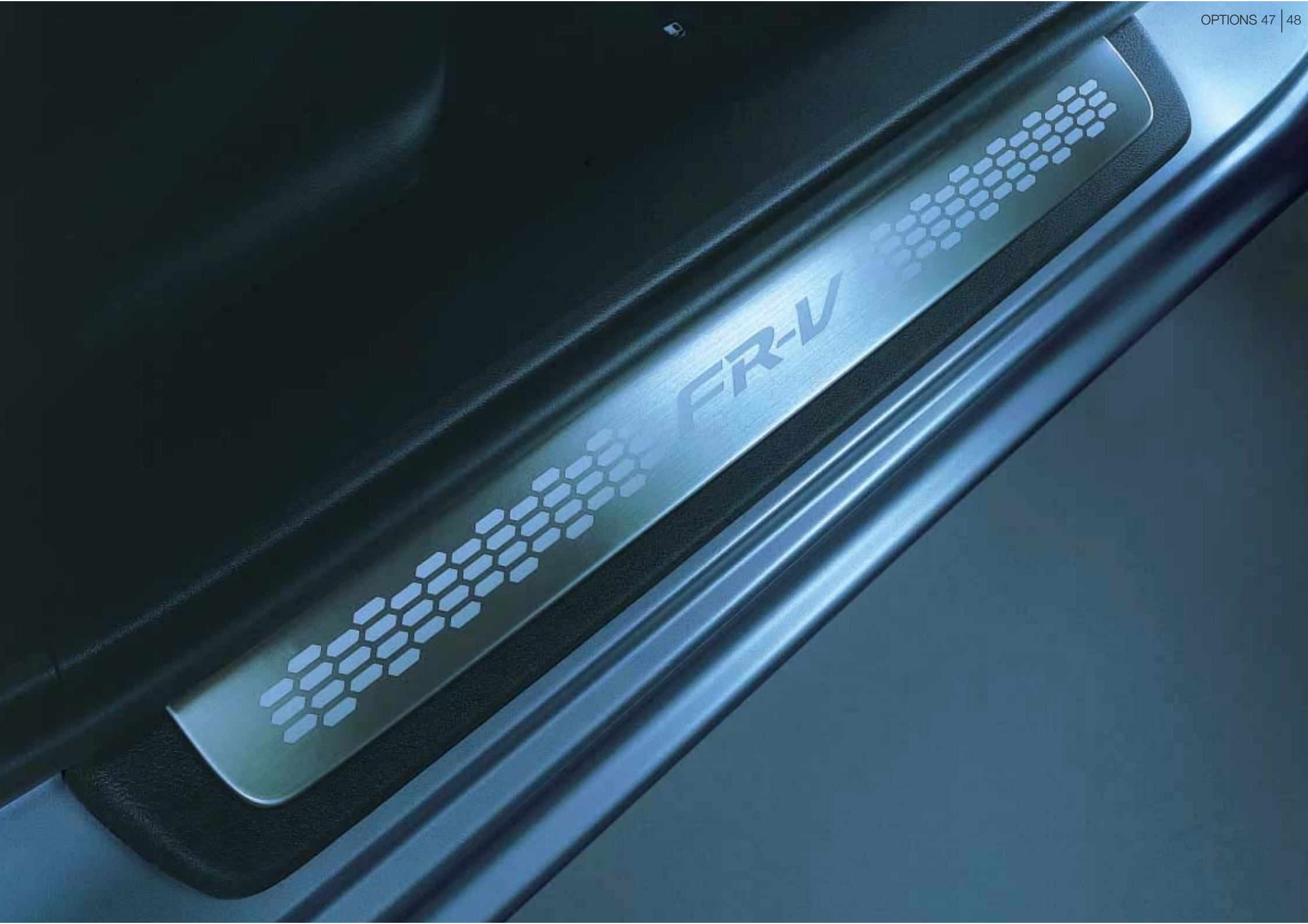
1610 mm

4285 mm



2113 mm including mirrors





The FR-V is designed to make a family journey a pleasurable, stress-free experience. That's why we've come up with a clever range of accessories, making sure everyone travelling has everything they need. We know that an awkward or ill-equipped drive can spoil a day out, so we made sure that the FR-V's optional extras cater for every trip you make, no matter who or what is on board.

**Active Pack**

Perfect for the family that likes to get out and about, the Active Pack includes a set of streamlined roof rails, plus cross bars for the top box, providing plenty of extra storage space so you don't have to leave anything behind. Rear and front mudguards give the exterior plenty of protection against the elements.

On the inside, removable floor carpets mean that you don't have to worry about muddy boots, and a practical trunk tray provides an ideal space to throw in dirty or wet items without necessitating a major clean-up. There's also a very sturdy fold-down table behind the front outer passenger seat, ideal for all those little things you'll need on a journey.

(Active Pack contains: floor carpet, trunk tray, roof rails, seat back table, cross bars, front and rear mud guards.)



This little table is brilliant for books, snacks and whatever else you may need, and its fold-down design makes it very sturdy and supportive.



Fold the rear seats and install your bicycle, with fork fixing for big bikes or wheel fixing for small bikes. A fitted cargo mat is also available to prevent wear and tear to the interior of your FR-V.



Light and aerodynamic; our 350 litre top box adds to load carrying capacity, shown here with roof rails and cross bars. The optional rear tailgate spoiler is also featured above.



**City Pack 1** Reverse parking sensors fitted to your FR-V allow you to safely park in the smallest of spaces. Comes with floor carpets.



This dog guard is of an innovative and superior design and of robust and sturdy construction to protect your cabin area.



Avoid scratched paint and backache with this bike lift that will hoist your cycle effortlessly into position.

**Style Pack**



Perfectly fitting front, rear and side skirts give your FR-V that extra sporty look. In addition 16" alloy wheels and Sports Suspension (20 to 25mm lower than standard suspension for sportier handling without compromising comfort) are available as options. Please consult your dealer for more information. Foglights shown above are standard on Sport and optional on SE models. (Style Pack contains: floor carpet, front skirt, rear skirt, and side skirt.)



An optional leather steering wheel befits the FR-V's high standards of comfort and performance.



Honda's powerful oval-shaped foglights for the FR-V are integrated into the front bumper. Standard on Sport and optional on SE models.



To give your FR-V an extra stylish look, Honda offers this specially designed 15" alloy wheel.



Honda's brightly polished 16" alloy wheel for the FR-V offers a stylish, sporty look.



Honda's rear entertainment system will occupy your passengers on long journeys, or even short ones!

**City Pack 2**



Shock resistant trims for the front and rear bumper give your FR-V a stylish look. Floor carpets are included in this pack but not shown in picture. In addition 15" alloys are available as an option. Foglights are available as an option on the SE grade, and standard on the sport. (City Pack 2 contains: floor carpet, front bumper trim and rear bumper trim.)



Metal finish door step garnish, which features the FR-V logo.



Bluetooth® - no wires, no hands. Just clearer and safer telephone calls with state-of-the-art Bluetooth technology. Available from February 2005.



Privacy glass on the rear window, rear 3/4 and rear screen gives your FR-V a distinctive and striking look. Available for the Sport model with your choice of either Satellite Navigation or sunroof.



#### **?Why do we find it hard to talk about money**

You've studied it. Talked about it. Dreamed about it. Now you have to pay for it. Just doesn't feel like part of the fun, somehow. So we thought, there should be a better way to do this. Not a quick-fix, easy-terms, one-size-fits-all deal, either. Finance that sounds too good to be true usually is. We were thinking 'simple', 'flexible' and 'convenient'. And that's what you get, right from making the deposit.

#### **?So where do we start**

With the deposit. Your current car or cash are both fine. You don't have either? No problem: we can work out a zero-deposit package, too.

#### **?Done your sums**

The most important part of any finance is the monthly payments. Only you know how much you can really afford. So tell us. That way, we can work out monthly payments to fit in with your budget. Our finance packages are flexible enough to work round just about anything.

After that, it's up to you.

We give you choices right through the process. Including at the end of the agreement. You want to keep the car? Simple: make the final payment and it's all yours. Or, you can give it back. As long as it's in good condition and within the agreed mileage, you can walk away with nothing more to pay\*.

And if you're ready for a new Honda, we'll arrange a part-exchange and a new finance package. Easy, really.

Making our finance more straightforward meant leaving out a few things. The long, complex forms. The dense technical jargon. The wait to see if you've got the go-ahead. We didn't think you'd miss them. We don't. All of which means you get your new Honda quicker.

Of course, none of this is any substitute for talking it over with your local Honda dealer. So now you know what to expect from a visit to us. When can we expect a visit from you?

Your local Honda dealer will be happy to give you a quotation.

#### Terms and Conditions

\*Honda Aspirations only (Honda's PCP product).  
Credit provided by Honda Finance Europe Plc, 470 London Road,  
Slough, Berkshire, SL3 8QY.



**?Want to predict the future**

The FR-V, like all Hondas, is made to our exacting standards. But we take nothing for granted. So the FR-V is covered by a 3 year manufacturer's warranty\*. You can extend this period of cover with a Hondacare Guarantee and give yourself peace of mind for up to a further 4 years. Hondacare Guarantee is unique and only available from authorised Honda Dealerships.

Just choose the period of cover you want - from 4 months to 4 years. Then sit back and relax, knowing that help is only a telephone call away. Unexpected repair bills will be settled immediately.

Further benefits include:

- Repairs carried out by Honda trained technicians.
- Guarantees the use of only Genuine Honda parts.
- Hondacare Assistance - Honda's comprehensive breakdown and recovery package.

Just ask your authorised Honda Dealership for more details.

**?Like beneficial insurance rates**

The Honda Owners Insurance scheme has been specially designed so that Honda owners receive beneficial insurance cover at competitive rates. To obtain details of all the benefits included and to receive a quotation, please contact your authorised Honda dealer or call 0845 200 8000.

**?Is help at hand when it really matters**

With Honda it is. Because if you're unlucky enough to have an accident, we have a free Hondacare Accident Helpline that will sort all the details for you and make it a priority to get your car back on the road. In the event of an accident please telephone 0800 521 728.

\*Subject to the Warranty terms and conditions listed on pages 15 and 16 of your service book.

**?Shouldn't the last thing you think about be maintenance**

A Hondacare Maintenance Plan\*\* means you won't have to think about it at all. It covers you for all servicing and maintenance costs and can be paid for by Direct Debit in monthly installments. So you can get on with enjoying your car.

It's competitive and flexible.

All servicing is undertaken by Honda dealers. This gives you access to fully qualified technicians and an established network of dealers throughout the UK.

It means your car will only ever be serviced and repaired with genuine Honda parts.

It protects the value of your car.

It's backed by Hondacare Assistance, giving you peace of mind 24 hours a day every day of the year.

It's backed by a Honda Manufacturer Warranty.

For full details, please contact your Honda dealer.

**?Can your car get the service you do**

We spend a lot of time working out the best service we can give to our customers. And you'd expect us to also come up with the best service for your car, too. So we designed Hondacare Budget Plan Servicing\*\*. This way, you can spread the cost of servicing your car with fixed monthly payments. It's available for new and used Honda cars, and for private and business users too.

\*\*Terms and conditions apply.



9,000 Miles/12 Months	
HR-V • S2000 • NSX • Legend • Insight Civic Diesel (3 door and 5 door)	
Months	Miles
12	9,000
24	18,000
36	27,000
48	36,000
60	45,000
72	54,000
84	63,000
96	72,000
108	81,000
120	90,000
132	99,000
144 <sup>1</sup>	108,000

12,500 Miles/12 Months	
Jazz • Stream • FR-V • Civic 4 door IMA • Civic Type-R CR-V • Civic Petrol (3 door and 5 door) Accord Saloon and Tourer (Petrol and Diesel)	
Months	Miles
12	12,500
24	25,000
36	37,500
48	50,000
60	62,500
72	75,000
84	87,500
96	100,000
108	112,500
120	125,000
132	137,500
144 <sup>1</sup>	150,000

<sup>1</sup>Should mileage exceed 144 months or 108,000/150,000 miles, please contact your local Honda dealer to obtain a Continuation Service book.

FRV	Transmission	CO <sub>2</sub> (g/km)	VED Band	Fuel Economy combined (l/100km/mpg)
1.7i VTEC SE	5 Speed Manual	179	C	7.5/37.7
2.0i VTEC SE	6 Speed Manual	199	D	8.4/33.6
2.0i VTEC Sport	6 Speed Manual	199	D	8.4/33.6



### **?Ever tried a little blue sky thinking**

We love this planet as much as you do. And we're well aware that a global corporation that builds cars has to take its responsibilities very seriously. And that's why we only ever build cars with the future in mind. A lot of damage has been done since the invention of the internal combustion engine, but thanks to cutting-edge technology we're aiming to cut it out all together.

Our manufacturing plant in Swindon is reducing the amount of landfill waste it produces. At the going rate, we're on track to cut that figure to zero by 2010. The development of our 3R concept - reduce, reuse, recycle - allows us not only to apply our principles throughout the plant, but also provides an educational tool for local schools and councils who visit us on a regular basis.

We've made technological developments that radically reduce emissions too. Like the Insight. It's the most fuel-efficient sports coupé in existence thanks to its Integrated Motor Assist technology.



The same technology you'll find in the 4 door Civic Executive, winner of Best Fuel Economy and Best 1-1.4 litre Engine at the 2003 International Engine of the Year Awards and the BP Green Fleet award for vehicle innovation. Our new generation i-series engines, such as our i-VTEC engine, are on course to produce 75% less HC (hydrogen and carbon atoms) and NOx (oxides of nitrogen) emissions by 2005, as well as on course to meet the 2010 fuel economy criteria in all weight categories.

Ahead of new regulations due to come into force in 2006, we've reduced our motorcycles' emissions and fuel consumption by 30%. And the production of road-going two-stroke engines is now a thing of the past. Even when it comes to boats, if you're

after an outboard engine, with Honda you'll only ever get the cleaner four-stroke version.

At Honda, if we have an idea, we want to make it happen. Take the groundbreaking FCX fuel-cell electric vehicle, which produces only water as a by-product. The first car of its kind to obtain approval for commercialisation in the US, it's fuelled by the chemical reaction between hydrogen and oxygen - we've even built a solar-powered hydrogen fuelling station at our research institute in Los Angeles. It's the greenest vehicle on the planet, and it's already driving around the streets of Tokyo and LA.



Not only are we cutting environmentally damaging emissions, we're actively putting something back in.

At participating Honda Dealerships, customers could now receive a Tree-Tube as a thank-you present. Each tube is equivalent to three months' worth of CarbonNeutral<sup>®</sup> driving, promoting projects that absorb, neutralise and offset the carbon dioxide emissions produced by car driving. So, not only are we planting forests in the UK, we're also swapping kerosene burners for solar panels in Sri Lanka and introducing energy efficiency equipment in poorer homes across the USA. And there are more projects on the way.

We're also rewriting the rulebooks by changing the way people think about transport. We know that cars have become so popular that the planet is becoming gridlocked. That's why we've introduced traffic-reduction schemes in Japan, such as the Intelligent Community Vehicle System, which encourages shared use of vehicles in urban areas. We want to create more public space, reduce traffic, lower pollution and provide an improved living environment for everyone.

At Honda we want to fill the world with great ideas. Not pollution.

**?Why stop when you reach the limit**

Think of some of the world's most innovative creations. The people who made them dared to challenge convention. At Honda, we let nothing get in the way of a good idea. We encourage our designers to test the boundaries of science as well as their own imaginations. That's why our cars, motorcycles, ATV's, powerboat engines and power equipment products are used the world over, consistently winning new awards, new accolades and new friends.

But it doesn't stop there. After witnessing an aerobatics display as a schoolboy our founder, Soichiro Honda, dreamed of creating an aeroplane. Eighty-seven years later our engineers are putting the finishing touches to the HondaJet. True to Honda's belief in finding solutions through innovation and imagination, the jet challenges standard aircraft design. Its HF118 turbofan engines are located on the upper sides of the wings, part of a groundbreaking design that reduces drag at high speed and increasing fuel efficiency by 40%. This break from conventional design also allows for 30% more cabin space. It goes to show what you can achieve by letting your imagination run free.

On the ground our desire to innovate is as strong as it's ever been. This applies as much to bicycles as it does to Formula 1 racing cars. On two wheels, we have recently perfected the RN01 downhill mountain bike, with its unique gearbox system that allows cyclists to change gear without the need to pedal.

This revolutionary design was born out of an enthusiastic idea that was allowed to flourish, rather than a design requirement. On the track, our Formula 1 programme has seen young British contender Jenson Button rise to the podium eight times so far in the 2004 season, the Honda engines providing credible and consistent rivalry to those of the dominant Ferrari team.

Some innovations come from the heart.

One Honda engineer, who hated diesel engines so much, made it his mission to revolutionise them. The i-CTDI sets a new benchmark in diesel technology. High in torque and low in fuel consumption, it's unique closed deck aluminium construction, one of the only aluminium diesel engines on the market, offers power, cleanliness and an incredibly low noise output, creating a level of performance that rivals the very best in the market. It's part of our constant mission to reduce emissions and create cleaner vehicles – like the FCX series.

These vehicles use hydrogen fuel cells as their power source, producing only water as a by-product. When it comes to engines, you don't get much cleaner than that.

And then there's ASIMO. Our famous robot. With his ground breaking abilities in balance, manoeuvrability, face and voice recognition, he represents our vision of creating technologies that go way beyond our everyday perceptions of transport and mobility.

Our latest inspiration comes in the form of an intelligent night-vision system, which uses infrared cameras to see in the dark and is the world's first system to detect pedestrians or moving, heat-emitting objects such as animals that are in the vehicles path, or even judged to be moving into that path. The system warns the driver via an audio caution linked to a 'heads-up' display above the dashboard.

Even when it comes to safety we look beyond the expected. As one of the first manufacturers to develop pedestrian safety technology, we continue to place importance in this area.

Our latest innovation is the 'pop-up' bonnet system. It uses sensors in the bumper to indicate whether an impact with a pedestrian has occurred. This triggers a mechanism that raises the rear portion of the engine hood away from the hard components found underneath it.

Our Head Injury Criteria are reduced by up to 40% when this system is fitted. All these innovations are in constant development, and there are new ideas being born every minute. We are always looking to improve, to make

our products cleaner, safer, more efficient. It's all part of our continuing mission to push back the boundaries of science, to turn inspirational ideas into reality.





Jazz



Insight



HR-V



S2000



Civic 3 Door



Civic 5 Door



FR-V



Civic 4 Door



Stream



CR-V



Accord Saloon



Accord Tourer

## ?What do all Honda cars have in common

More than you might think to look at them. They're all unique. But every Honda is designed to excite, inspire and perform.

How do we turn that dream into reality? Through world-class engineering and innovation. Show us a boundary, and we'll push it, whether in aesthetics, safety, driving dynamics or engine technology. Our VTEC engines deliver the exact amount of power needed, at the precise moment it's asked for. Our new i-CTDI is as quiet and refined as a petrol engine but with all the fuel consumption and tax benefits of diesel. And our multi award-winning Integrated Motor Assist (IMA) ingeniously combines petrol and electric motor technology to save fuel, tax and money.

We're obsessed with detail and build quality. If a conventional process doesn't produce the results we want, we'll invent a new one that does. Like our advanced dip-and-roll painting technique, designed to prevent air bubbles forming under the surface of the paint.

We even build some of the machines that build our cars. The Civic 3 door, Civic 5 door and CR-V all start life at our Swindon plant, in which we've invested £1.15 billion since its opening. Making it one of the world's most sophisticated production lines. But it's not just what's inside our buildings that meets with others' approval: in October 2002, the Chartered Institute of Building gave us its prestigious 'Building Award' for our second European car plant.

But there's another, even more important element you'll find in every Honda. A shared heritage, the engineering equivalent of DNA. Which is? Racing. It was the lifelong passion of our founder Soichiro Honda, and we're still competing at the highest level today. In 2002, our Synchro Motorsport Team drove the Civic Type-R to 17 British Touring Car Championship (BTCC) victories – including the overall Driver's and Team titles.

As well as providing the perfect proving ground for new technology, racing teaches the importance of safety. Which is why we've built the world's largest indoor crash-testing facility. We've also developed the most advanced crash-test dummies in existence: the AA presented us with a special award for our work in developing pedestrian-friendly vehicles. And of course, all that work is in your new Honda, too.

Every Honda model is a product of the power of dreams. It's what brings them all together. And makes them completely unique.



## GLOSSARY

**ABS** The Anti-lock Braking System prevents the wheels from locking when the brakes are applied in an emergency, reducing the possibility of a skid on wet, icy or loose surfaces, and enabling the driver to retain steering control.

**Brake Assist** If you have to make an emergency stop, the system detects the quick pedal action and automatically boosts braking power to reduce the stopping distance.

**CO<sub>2</sub>** Carbon dioxide is one of the exhaust gases believed to be one of the causes of the green house effect. The lower the CO<sub>2</sub> emissions, the better for the environment.

### Double wishbone suspension

This wheel suspension layout provides maximum accuracy in defining the wheel movement during driving.

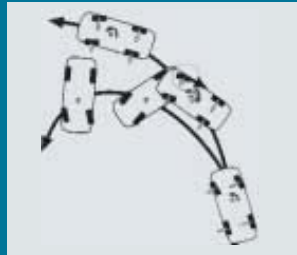
The result is precise and predictable handling of the car as well as reduced body movement during braking and cornering. Double wishbone suspension systems are used in race cars.

**EBD** Electronic Brake-force Distribution works in tandem with ABS analysing weight distribution around the car and automatically adjusting the braking force applied to front and rear wheels to help maintain directional stability.

**Torque** Torque is a twisting or rotational force. For example, when you use a spanner to tighten a bolt, you are actually applying torque to turn the bolt. The further out you hold the spanner, the more torque you apply. Low rev torque is the ability of an engine to develop strong response (rotational force), and hence, acceleration from lower revs and speeds. As speed rises, torque becomes less important than power for maintaining high speeds.

**Power** Power is a measurement of how fast work can be done.

**VSA** Vehicle Stability Assist helps you maintain control during cornering, acceleration and collision-avoidance manoeuvres. When it detects wheel-slip under acceleration, it applies braking to the affected wheel and reduces engine power until traction is regained. Any understeer and oversteer that falls outside the system's predicted range of vehicle responses is also corrected automatically.

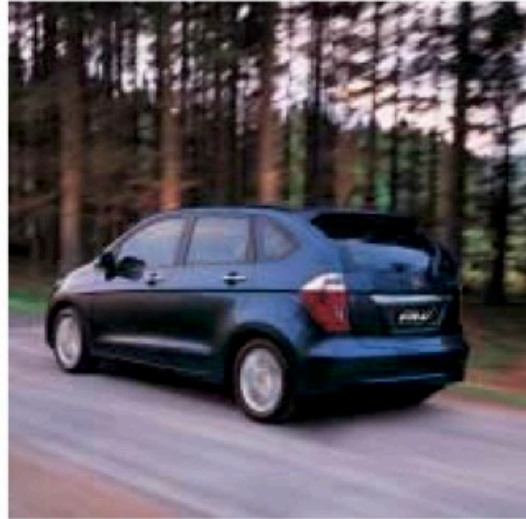


VSA Controlling oversteer



VSA Controlling understeer





These specification details do not apply to any particular product which is supplied or offered for sale. The manufacturers reserve the right to vary their specifications, including colours, with or without notice and at such times in such manner as they think fit. Major as well as minor changes may be involved. Every effort, however, is made to ensure the accuracy of the particulars contained in this brochure. This publication shall not constitute in any circumstances whatsoever an offer by the Company to any person. All sales are made by the Distributor or Dealer concerned subject to and with the benefit of the standard Conditions of Sale and Warranty given by the Distributor or Dealer, copies of which may be obtained from him on request. This publicity material applies to the UK only Trade Descriptions Act (1968). Whilst efforts are made to ensure specification accuracy, brochures are prepared and printed several months in advance of distribution and consequently cannot always immediately reflect either changes in specification or in some isolated cases the provision of a particular feature. Customers are always advised to discuss specification details with the supplying Dealer especially if your model selection is dependent upon one of the features advertised.

### **Honda (UK) - Cars**

470 London Road, Slough, Berkshire, SL3 8QY  
Honda Contact Centre - Telephone: 0845 200 8000  
[www.honda.co.uk](http://www.honda.co.uk)



Printed on Recycled Paper